



# The Ambler

## Amble's Community Newspaper

Issue 102 Dec 2016/Jan 2017

*Momentous day as new lifeboat enters harbour for first time*

### Welcome home 'Elizabeth and Leonard'

Hundreds of well wishers turned out to greet Amble's new lifeboat as she entered the harbour for the first time.

The crowd cheered, clapped and waved flags, as the new Shannon class lifeboat was escorted into her new home by the two existing lifeboats and crew.

On board the existing lifeboat 'The Four Boys', musician Beverley Palin piped the new boat into harbour.

The new £2million vessel provides twice the speed and range capabilities of 'The Four Boys', with much safer handling coming into the harbour at Amble.

The 'Elizabeth and Leonard' showed off her superior agility in front of the crowds. Coxswain John Connell steered the lifeboat through a series of speeds and directions,

showing how effortlessly it can move through the water.

Katrina Cassidy, chair of Amble Lifeboat Fundraisers said "It was like the boat was dancing on water!"

John Connell said he was "proud as punch with her arrival and thanked the fundraisers and community for the magnificent

effort in reaching the appeal target".

Local fundraisers worked tirelessly to raise £200,000, and thanks to them and the generosity of local people, the future is much safer for the whole sailing community.

RNLB 1316 'Elizabeth and Leonard' will officially be named in a ceremony next year. The boat is named after Mrs. Elizabeth Foley Brumfield from Hull, left a generous legacy to the RNLB following her death

in 2013. She requested that it be used to purchase an all-weather lifeboat in memory of her and her late husband, Leonard.

Once the whole crew has been trained on the new boat, the existing Mersey class lifeboat, RNLB 1219 'The Four Boys' will go into the relief fleet.



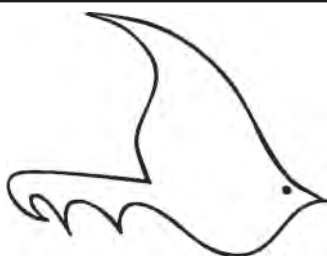
Amble's new Shannon class lifeboat 'Elizabeth and Leonard' *More photos and video on our website*

### Santa comes to town



TWO YEAR OLD Alfie Fletcher and his family met Santa at the Torchlight Procession. Thousands of people turned out to join in the fun and watch the parade of local groups as they walked and danced down Queen Street. Above right: Santa also had time to hop aboard the Rotary Club's float and wave to the crowds. More photos on back page, website and our Facebook page. *Photos Anna Williams and Andrew Mounsey*





## The Ambler

Fourways 2  
6 Dilston Terrace  
Northumberland NE65 0DT  
Tel: 01665 712929  
www.theambler.co.uk  
editor@theambler.co.uk  
Twitter: AmbleByTheSea  
YouTube: AnnaAtTheAmbler1



Follow us on Facebook  
Follow us on Pinterest

### Editorial Team:

Vivienne Dalgliesh - Cath Findlay  
Norma Hinson - Mir Jannetta  
Tim Jones - Lou Pickering  
Red Willcox

Editor: Anna Williams

### Thanks to:

Mark Beswick & The Artogرافي Crew  
Bartle Rippon & Andrew Mounsey

### Distribution:

Dawn and Taylor

### Printing:

Azure Printers, Pegswood

Would you like to join  
*The Ambler* team? We are a friendly  
group who welcome contributions  
and help from anyone who would  
like to volunteer.

*Thanks to all our contributors,  
sponsors and advertisers:*

Community Foundation  
Coquet Fund

Inner Wheel Club of  
Amble and Warkworth

Rotary Club of  
Amble and Warkworth



*The Ambler is a project of  
Amble Development Trust*

The views expressed in *The Ambler*  
and *The Ambler Online* are not  
necessarily those of  
the Editorial Team

Printed on paper from sustainable  
forestry in the UK

## Season's greetings and goodwill to all

Everyone wants to come to Amble, so it seems. Special guests: our new lifeboat (p1, p10) followed by Santa (p1, p24). More people than ever attended our Armistice and Remembrance day services (p5 and p7), and the Torchlight Procession packed out Queen Street once again.

Usually we welcome everyone. But now there is concern over possibly 500 new families (p3). Will the Friendliest Port cope?

Talking to a strategic developer at Northumberland County Council, it becomes clear just how impossible it is to finance ever more demand with ever shrinking budgets. The population of Amble is aging and our employment base has declined. We must look to ourselves; small scale independent businesses are the most likely job providers in the future.

Can we cope with 500 new houses? Our doctors are feeling a financial squeeze, our schools require a review of their capacity and even the county council has noted our road junctions need attention.



Ironically, large-scale development brings a chance of investment via Section106. The government says we must build more houses. So do we build more in order to get more? See p3.

"Everyone's so canny in Amble" said a lady the other day. Goodwill is still a defining feature of our community. And yet there is a chill on the wind, a cloud of uncertainty on the horizon.

If recent political decisions have shocked some and encouraged divisive behaviour amongst others, we must dig deep into our community spirit and meet these changes and challenges with imagination and goodwill.

Locals are always looking out for others less fortunate (p10, p11, p17) and are concerned for our environment (p6 and p19).

Already we've heard a suggestion to start a fundraising campaign to help restore the memorial clock tower in the town square. See, you can't keep Amble's community spirit down. Can the Friendliest Port cope? Whey aye.

*Season's greetings from the Ambler team.*

## George Skipper, proud Chelsea Pensioner

Amble war veteran George Skipper has been selected to be a Chelsea Pensioner and is now resident at the Royal Chelsea Hospital in the heart of London.

George grew up in Bermondsey and after the death of his first wife, he moved to Amble, where he became a loyal supporter and latterly President of the Amble and Warkworth branch of the Royal British Legion.

During WW2, George served in the Royal Army Service Corps and took part in the D-Day landings and last year was awarded the Legion D'Honneur by the French government.

In recent months, George moved away from Amble, to live with his son and has now returned to his roots in London to take his place alongside over 300 other army veterans in the Royal Hospital.

Harry McQuillen who knew George for many years received a letter from the 94 year old Chelsea Pensioner.

"He assures us that he's happy and well looked after. There's good company, good food, a very nice room and very good care. Posh hotels for tea, and the prospect of a visit to Biggin Hill for the Remembrance Day parade are a clear indicator of George's approval of his new life.

He mentions the fact that his new Chelsea home is 'a bit military' but he's still happy with it.

Of course he remembers Amble with great affection and I'm sure that Amble liked him," said Harry.

Amble and Warkworth British Legion secretary June Watson said "We will miss him at the branch but are happy that he will now have comradeship and security for the rest of his life."



Above: George is wearing the 'shako' cap which is worn with the scarlet coat for all other events. Two types of uniform are issued, known fondly as 'scarlets' and 'blues' and for normal day wear George will wear his dark blue uniform.

Left: George took part in the Remembrance Day parade to the Cenotaph in London. Amble veteran Peter Proctor-Cannon also took part in the parade which was broadcast on TV. Afterwards Peter met George for a drink. "He said he missed Amble, but he is so happy down there," said Peter.



# Concern over housing plans on Acklington Road

Plans for a possible 500 house development in Amble drew mixed views at a public consultation event, and prompted a resident of Acklington Road to set up a petition.

At the consultation event, held at the beginning of October, members of the public were asked to view the outline plans, and give their views on what type of housing they might like to see. This included how many homes they would like to see built at the site, and whether or not they were in favour of the provision of affordable housing.

Housebuilder Paul Hindhaugh told *The Ambler*: "We're not looking at a high density site like the Persimmon development. We want a good mix of open space. I'm a local builder and I can see Amble has changed dramatically in the last 20 years. We're considering aspects such as: can Amble sustain these houses? Amble wants a supermarket, more access to dentists, doctors etc. so a development of this kind may facilitate that improvement."

It is envisaged that there will be 55 new full-time jobs created as a result.

## Concerned residents

Some visitors were skeptical of the new development, most people citing an increased strain on local resources.

"We live at Castle View and we can't get out onto Acklington Road on a weekend. We don't need it. We can't get into the doctors or dentists, we haven't got a supermarket," said one visitor.

Mr and Mrs Bond have recently moved to Amble from Thirsk. "We have just bought one of the new Persimmon houses and we found we can't get a dentist in Amble. We're not against the idea of this [development], but it has to be able to bring prosperity to the area, which we can't see happening yet with the Persimmon development."

But some visitors were optimistic with the plans, and one expressed exasperation with some of the comments they heard being discussed.

"I've no idea how anything gets built in Amble, with the amount of negative comments," he said. "Amble needs investment and if that's the start, then I'm happy. If this goes ahead then it might just attract Asda or the like."

## Strategic plans

Northumberland County Council's Core Strategy document says Amble has sufficient capacity to accommodate 600 new homes between now and 2031.

The Ambler spoke to NCC strategic planner David English, about how such numbers are decided. David explained that the government's policy is to build more houses, and NCC must develop a strategic plan to adhere to that.

"The National Planning Framework says we have to boost the supply of homes. Our Core Strategy is the document which outlines NCC's plans for growth. We are planning to deliver 24,000 houses across Northumberland between 2011 and 2031," he said.

Regarding access to medical provision, David explained that planners examine the ratio of patients per doctor/nurse. The surgeries in Amble have a lower number of patient to GP ratio than others in Northumberland, and the national average.

"It's an issue of recruiting and appointing GPs. The NHS Clinical Commissioning group are responsible for recruiting. The planning system can't do anything about that."

*Anna Williams*

## Council accepts some road junctions require improvement

"A number of roads leading into Amble are constrained, meaning improvements may be required to support further development; including Percy Drive to the south; Gloster Hill to the north west; and Acklington Road to the south west. There are capacity issues associated with a number of junctions within the town centre."

*NCC Strategic Land Review 2016*

## Current NHS funding is insufficient for any increase in staffing

Coquet Medical Group provides comprehensive medical services to over 11,300 patients across two sites (Amble & Hadston).

Development in and around Amble is something we see as generally positive for the local economy and this has recently been accompanied by significant housing expansion.

Sadly general practice is under considerable pressure at present and the huge demand from patients across the area is incredibly difficult

to match with current capacity.

As doctors who feel passionately about our ability to provide high quality patient care, we are keen to increase the number of GPs, nurses and associated clinical staff.

We understand the significant potential for preventative healthcare in general practice but this is only possible with more clinical staff. The current funding from NHS England is insufficient to make these required changes.

Our area has some of the highest levels of

chronic disease (e.g. obesity, hypertension and diabetes) in the North of England.

In addition we have a growing number of patients over 80 years old, many of these have multiple medical problems.

Inevitably, an increase in the local population will result in added pressure on primary care services and we would hope that this will be recognised by NHS England and the appropriate support provided.

*Coquet Medical Group spokesperson*



The public consultation drew a large crowd throughout the day

## Petition launched

Michael Walters, who lives on Acklington Road, was so concerned that he sent a petition to Northumberland County Council's highways department with almost 100 signatures in support of resiting the entrance into the estate. He believes there should be more public debate on the plan.

He told us: "When I spoke to people they were very angry. Woodbine Street and Acklington Road are very congested now, especially at school time with inconsiderate parking. Residents' on-street parking between Bisley Road and Albert Street makes the road a lot narrower, with vehicles driving along the footpath outside our property. There are four Arriva buses every hour during the day and school contract buses."

## Differing views on schools capacity

"Schools like JCSC which are small in comparison to others welcome suitable development in the catchment communities ideally supported by communities too. We monitored approval of applications for housing in Hadston, Widdrington and latest interest in Amble. As the Government funds schools per pupil extra students means extra resources for schools to further develop their offer.

As we continue to merge and improve as a federation we welcome any new additions to our student cohort in any year group. Recently we have had an influx and student numbers can always fluctuate regardless of development. The important point for us is we have capacity.

Our schools, especially the High School, were built for a time where many more students were educated in Amble. More students basically means more teachers and resources for all.

*Scott Dickinson, Chair of Governors JCSC*

"The First Schools are both near capacity and in some year groups are full. There would have to be detailed discussions with Education. Numbers are an inexact science but planning for school places is a responsibility of Northumberland County Council. I made my concerns known to the developers.

*Robert Arkless, Head of Children's Services NCC*



# BT Payphone removals plans



The phonebox on Queen Street is one of those due to be removed

There are 321 payphones in Northumberland, of these 179 are included in a consultation for removal.

Payphone usage has declined by more than 90% in the past decade and continues to decline year on year. Less than one call a month is made from one third of all call boxes.

With the rise in mobile phone ownership (93 per cent of adults own a mobile phone) the demand for a payphone service just isn't there.

A spokesman from BT said, "BT is committed to providing a public payphone service, but with usage declining by over 90 per cent in the last decade, we've continued to review and remove payphones which are no longer needed.

Any removal of payphones is carried out in strict adherence to the Ofcom guidelines and, where appropriate, with the consent of local authorities.

In all instances where there's no other payphone within 400 metres, we'll ask for consent from the local authority to remove the payphone. Where we receive objections from the local authority, we won't remove the payphone."

Local phone boxes destined for removal are located at the junction of Queen Street and High Street, Links Avenue, and ones at High Hauxley, Warkworth Station, and

at the junction of Morwick Rd and Barns Road, Warkworth

## Adopt a Kiosk

The 'Adopt a Kiosk' programme gives communities the opportunity to adopt their local phone box with the payphone taken out and make them an asset that local people can enjoy. It's simple to do and it costs just £1.

Often, BT phone boxes have been a part of a town or village for years, and many members of the community are keen to avoid simply having the box removed - leaving an empty space where it once stood.

More than 3,500 communities across the UK have seized the opportunity to do something with local phone boxes that had little or no usage. It's amazing the innovative ideas that people come up with for their beloved red phone boxes.

There have been grocery shops, a wildlife information centre, art galleries, school projects and the Community Heartbeat Trust charity has installed defibrillators in several local phone boxes including one at Glanton, near Alnwick. BT say there was even a pub installed in one for a night.

BT has written to parish councils across the UK inviting them to adopt their local kiosk and safeguard it from removal. For more information Email [payphones@bt.com](mailto:payphones@bt.com) to see if your phone box is available.

## Festival of lights at Amble Links


Amble Links School recently held a Divali Day when artist Jayamini De Silva talked with the children about Divali, and complete a range of artwork with each class (see photo).

Year 1 and Year 3 children also experienced a planetarium that visited school. Both of these events were paid for by the school's PTA, whose members work tirelessly to raise funds.

Pictures on [www.facebook.com/alfs](http://www.facebook.com/alfs) and school website: [www.amblelinks.northumberland.sch.uk](http://www.amblelinks.northumberland.sch.uk)

Paul Heeley Headteacher,  
Amble Links First School





### A Touch of Love

Pod 13 Amble Harbour Village

Beautiful & unusual gifts for all occasions, & special touches for the home, garden & events.

*A Touch of Love*

made with love...

## Stylish Living For Dogs

Luxury accessories for the discerning pooch. Stocking everything from dog collars to dog beer and popcorn!



**URBANPOOCH**

STYLISH LIVING FOR DOGS

Find us on Facebook

Pod 8 Amble Harbour Village



**edie pebble**

Pod 14 Amble Harbour Village

Beautiful, handmade gifts and vintage treasures.



Perfect if you're looking for something individual to give this Christmas.

## The Boat Shed Gallery



Pod 4, Amble Harbour Village

Original paintings and prints from the coastline of Northumberland. Cards, Christmas cards and gifts.



**Seriously good coffee.**

Speciality coffee beans roasted daily on site.

- Handmade chocolate bars
- Ice cream milk shakes

Pod 15 Amble Harbour Village  
[www.mochamondo.com](http://www.mochamondo.com)



# Amble children pay their respects to the fallen



Above: Brambles nursery children and staff  
Left: Amble First School with parents and staff

Children from Brambles nursery and Amble First school gathered to pay their respects to the fallen of all wars, in an Armistice Day ceremony at Amble's war memorial.

At 11 am on 11 November, in the cold bright autumn sunshine, a large gathering of over a hundred children and adults joined in a Remembrance service, and stood quietly and solemnly during

the two minute silence.

Army veteran Peter Proctor-Cannon recited a passage from Robert Laurence Binyon's 'For the Fallen':

Rev. Velda Nicholson led prayers and the intercession.

Wreaths were laid by Amble Co-op funerals (right), Brambles' nursery and Amble First school. Poppy crosses were also placed in the memorial garden.



Supermoon over Amble Harbour Village. Photo by John Clarke

A fantastic range of cosmetics suitable for all ages & budgets!

**Treat yourself this Christmas to a Manicure at the Pod!**

Gelish Gel Polish Manicure £18

All That Jazz Polish Manicure £12

Luxury Manicures using the Chocolate Orange scented All That Jazz Manicure range.

Luxury Gelish Manicure £28

Luxury All That Jazz £20

Book your appointment now by popping in the pod, sending us a Facebook message or texting 07464269245.



Pod 2 Amble Harbour Village

facebook.com/CoquetCosmetics

@CoquetCosmetics

coquetcosmetics

www.coquetcosmetics-uk.com

## The 'P' Pod

**Perfect for presents!**

Choice of fashion handbag, watch in presentation tin & selected scarf

Just **£25\***

up to Christmas Eve only.  
Gift wrapping service also available

\*Selected handbags and scarves only.

Pod 6, Amble Harbour Village

Tues - Fri: 11am - 3pm

Sat & Sun: 10am - 4pm

Closed Mondays (except holidays)

www.theppod.co.uk

## DECEMBER DEAL



A new Jewellery Studio at Amble Harbour Village, recently opened by Karen-Rose

- Earrings,
- Necklaces,
- Pendants and
- Bracelets

Unique handmade jewellery



See my new range of stunning Sea Glass pieces, all set in Sterling Silver

Beautiful natural Semi-Precious Gemstones and a fabulous Birthstone range

**December opening:**  
Thursday to Sunday  
11am - 3pm  
until Christmas Eve

Pod 3, Amble Harbour Village

www.seawavesstudio.co.uk

# WHAT YOU SAY...

## Thanks from fundraiser

I am delighted to report that my fundraising for Marie Curie has now reached a total of £4,300 with a recent donation of £1,600.

Marie Curie provides nursing for patients with any terminal illness - crucially often enabling people to spend their last days at home. It costs £20 for just one hour of nursing care making support of this vital service of huge importance to us all. Our website is [www.facebook.com/warkworthbook](http://www.facebook.com/warkworthbook)

Many thanks,  
*Beryl Holmes, via email*

## New housing needs better facilities

There should be no more homes built until there is a better infrastructure. There is no decent supermarket, and the schools would not be able to cope with the influx of children. Also, I would be interested to know where these people would all find jobs in the area. I would sincerely hope that this new housing would not be bought by housing associations to provide for benefits claimants.

*Julie Taylor*  
*comment via Ambler website*



## The battle of Druridge Bay

On the road to Druridge is a plaque commemorating a victory won over 20 years ago. People battled against plans to build a nuclear power station in the middle of the Bay. They won but now Druridge Bay is the site of another battle. The same arguments for and against the nuclear power station are being used in the fight over a proposed opencast coal mine.

Just as the Brexit debate has split our country down the middle, the proposed Highthorn mine has torn a rift in our community with passionate voices speaking on both sides.

The Banks Group from County Durham want to excavate three million tonnes of coal, possibly expanding this to seven million. They say they will invest in the local area, bringing much needed jobs as well as restoring the area to farmland afterwards. They are supported by Northumberland County Council who voted the plans through with no objections and by those who see employment opportunities.

In opposition is the residents' group as well as people from further afield who are represented under the title 'Save Druridge'. They have gained active support from almost all major national political parties including a group of Britain's most respected climate and ecology scientists and Friends of the Earth. Well known figures including Bill Oddie,

Natalie Bennett and Caroline Lucas M.P. both from the Green Party, Berwick M.P. Anne-Marie Trevelyan and Julie Pörksen of the Lib Dems have all lent their voices to the fight against the mine.

The counter-arguments are that it will cause irreversible ecological damage to the Druridge Bay area, release climate change gasses and destroy local businesses with the resulting loss of dozens of tourism-based jobs. They are concerned about the increase in HGV traffic on the A1068. Damage to the health of people is a worry too, with opencast mine proximity being linked to both brain and bowel cancer and asthma. They also doubt Banks' claim it will bring jobs to the area, pointing out that 90 miles to the north-west, Banks is closing its Rusha Mine prematurely because there is no demand for the coal. Experienced mine workers there plan to move here should the mine go ahead.

The UK government took the decision away from the Council with a public inquiry being held instead. Councillors are unhappy about this unprecedented move understandably as it may be seen by voters to reflect upon their credibility and decision making capability. Local elections are in May!

## Friday Nights at Amble Youth Project

I would just say a huge thank you to individuals, businesses and groups in the Amble, Warkworth and Alnwick area. We appealed for donations to help keep the Friday evening session open at Amble Youth Project under our "Lots for Little" campaign. We have had a very encouraging response and we are able to run the sessions through to the spring as we hoped to do. Any young person aged between 13 and 19 years are most welcome to come along. The door is open from 6pm until 8.30pm.

If anyone would still like to donate to this ongoing work or anyone has any queries please contact me, Mary Davidson on 01665 711784 or email [mary.davidson@btinternet.com](mailto:mary.davidson@btinternet.com).

Many thanks  
*Mary Davidson, via email*



Above: Bill Oddie was one of the supporters of Save Druridge campaign at a beach rally in May

The inquiry looks at how the proposed mine coheres and complies with various Government policies and strategies: climate change, low-carbon energy, conserving and enhancing the natural environment, the phasing out of coal fired power stations, the sustainability of the mineral extraction and any other matter the inspector considers relevant will be taken into account before a final decision is made.

Campaigners see the remnants of the global coal industry collapsing, heralding the end of this Carbon Age, an age that caused the loss of wildlife in the last 40 years. Pro-mine campaigners see profits to be made and jobs for a few more years and there is real sentimentality towards mining locally. Whether or not it is approved, whether we want the mine or not, we are living through what will become a fascinating piece of history. I wonder how historians will look back on the Battle of Druridge Bay?

*Ivor Rackham*  
*Local Green Party Officer and Environmental Campaigner*

We welcome your letters, email, Facebook and Twitter comments for publication. Your name and address must be supplied, but will be withheld on request. Letters/Facebook comments may be edited. Contact details on page2.



## We will remember them: Remembrance Day 2016



A PACKED town square gathered for the service which included a 2 min silence marked by the playing of a bugle, poppy wreath laying from community organisations and public services, and a short service from Coquet Churches Together. *Photos by Andrew Mounsey*



### Expertise Wills and Wealth



#### DO YOU WANT TO PROTECT YOUR FAMILY'S ASSETS?

Protect from 3rd Party Challenges & Divorce and Business Failure, Sideways Disinheritance

#### Free Advice on Tax Planning on Care Costs

#### Lasting Powers of Attorney (changed 2007)

Make sure you have them in place whilst you're fit and healthy

#### NEED HELP WITH PROBATE? Fixed Fee from £1000

#### Write A Will from £99 or Free Will Reviews

Ring Enid: 07772 182 130 • 01670 855 768

for a **FREE CONSULTATION** in your home



Email: [enid.eww@sky.com](mailto:enid.eww@sky.com)  
Barrister Intermediary and  
Member of the Legal Services Guild



*"The Bede Street" welcomes  
all age groups to celebrate  
Christmas & New Year, with  
various events to suit all tastes*



**Saturday 17 December**  
8.30pm

Local Live Band *The Range*

**Tuesday 27 December 8pm**  
Christmas Quiz

**Thursday 22 December**  
7.45pm

Christmas Bingo

**NEW YEAR'S EVE**  
Free Juke Box & Pool

**BOXING DAY**  
6pm - 12am Disco

7.30pm Bingo &  
Random Draw

7.45pm Newcastle U.  
v Sheffield W.

**NEW YEAR'S DAY**  
3pm Afternoon/  
Evening Disco  
7.30pm Bingo &  
Random Draw

**Monday 2 January 7.45pm**  
Blackburn R. v  
Newcastle U.

An assortment of low cost  
drinks available including

John Smiths (£2.60)

Fosters (£2.85 )

Real Ales (£2.70).

35ml measures on all  
top brand spirits.



A range of top quality  
wines available by the 70cl  
bottle (£9.95)

Various Cocktails (£3.95)

*Why not  
give us a try  
this festive season!*

Amble Club Ltd, 16 Bede Street Amble 01665 710213



## Staff changes at Coquet Medical Group

**D**r. Carman will be returning to work at the end of November. She will then be based at Amble where she will take over the care of Dr. Watkins' patients and Dr. Watkins will remain at Broomhill where he will take over the care of Dr. Carman's patients.

Patient Reference Group

We would like to encourage you to join our Patient Reference Group so you can be involved in the decisions about the range and quality of services that we provide.

We currently have 20 members on our group, 14 via email and six via letter. Age ranges are currently between 44 and 82 years of age and we would therefore particularly welcome younger and older members to our group so that all ages are represented.

If you would be willing to leave us your contact details we will add you to our contact list. We will then get in touch with you occasionally to ask you a few questions or to ask for your feedback. As a member of our group you will also be invited to attend our twice yearly meetings where we try to discuss certain areas of improvement in more detail, but this is not a requirement and you won't have to attend if you don't want to.

If you would like further information please ask at reception or contact Carla Robertson at Broomhill Health Centre on 01670 760229 or via email:- [carla.robertson@nhs.net](mailto:carla.robertson@nhs.net)

Professor Wilkes is also looking to recruit patient volunteers to a Research Patient Reference Group. If you are interested in expressing your views on how various research studies are set up and run please leave your details with the receptionist to pass on.



Amble Health Centre

We want to get better at communicating with our patients. We want to make sure you can read and understand the information we send you and that you can contact us in an accessible way.

Please let us know if you have a disability, impairment or sensory loss and find it hard to communicate with us, read our letters, or if you need someone to support you at appointments. Please tell the receptionist if you require information and support in a certain way, for example:-

- If you need information in braille, large print or easy read.
- If you need support from a professional such as a British sign language interpreter or advocate.
- If we can support you to lip read or use a hearing aid or communication tool.

We will record what you tell us so we can best support your needs each time you use our services.

*Carla Robertson  
Coquet Medical Group*

## New body cameras for council staff



Above: Gemma Fowle, animal welfare officer, wearing one of the body cameras

**E**nforcement officers in Northumberland have started wearing chest mounted cameras in an attempt to keep them safe while out and about in the county. These cameras also make providing evidence against offenders more efficient.

Northumberland Fire and Rescue Service, which manages public protection, have purchased seven of the cameras to be worn by a number of staff members including environmental enforcement officers and animal welfare officers.

Councillor Elizabeth Simpson, chair of the safer Northumberland board and deputy business chair, said: "The new cameras will hopefully be a deterrent against unreasonable behaviour and will ensure transparency for both staff and residents.

"Our officers are out and about in the county every day and they are sometimes subjected to offensive behaviour from members of the public. Having the new cameras will hopefully reduce these incidents as people are more likely to think about their actions if they know they're being recorded.

"The cameras will also make providing evidence much more efficient meaning it will be quicker and more cost effective to prosecute offenders."

Cameras have already been adopted by other local authorities across England and Scotland.

## Age of insecurity

**W**hen I read the recent submissions deadline email from the Ambler, I considered



asking for a Papal Dispensation to allow me to miss the deadline and send this copy of my ramblings after the results of the U.S. elections. I decided not to do so. My mind turned to recent events, including the Trump/Clinton saga. It could well provide the storyline for a horror play in a few years time: (Or will it be a horror movie?) Even the stock markets have taken fright at the prospect of a Donald Trump presidency!

If we look farther afield at Aleppo, Mosul, the plight of the Yazidi people, cyber-attacks, earthquakes in Italy, the razing of the jungle and the dispersal of its inhabitants, we see trouble in so many places.

What about things nearer to home? Our prisons are at breaking point, with addiction and violence never far away. It seems that Universal Credit may not be quite so universal after all, and that many vulnerable people could find life very difficult. Our Victorian ancestors divided poor people into the Deserving and Undeserving poor. Heaven help you if you were Undeserving!

Of course fears over Brexit and its economic consequences will be with us for years. The common feature of the things I've written about above is that we just don't know how everything will pan out. So what's new? We've NEVER been able to look ahead with certainty about anything – apart from Death and Taxes!

Many of us are optimists, as I keep saying ad-nauseam, and we fully expect that we'll be able to rub along quite nicely thank you very much. We don't like to think of bad things that could happen to us, and yet we take out insurance policies. My personal insurance policy, as I've said so often, is to try to keep as healthy as I can, to find interesting things to do, to be with people I like as often as I can, and to thank my lucky stars for the Good Things in my life.

It works for me!  
*Harry McQuillen*



# Code club will help Amble children get ahead

Young people in Amble are set to learn the basics of computer programming as a successful funding bid has brought £2,000 worth of new IT equipment for a coding club in the town.

Amble Development Trust approached Northumberland County Council's digital team for support in gaining funding to purchase the equipment needed for a Code Club - part of developing a digital hub for the local community.

Code Club is a nationwide charity which encourages children aged between nine and 11 to start learning the basics of computer coding. It is in addition to the normal school curriculum, and is run by volunteers. The scheme provides easy to follow step-by-step guides which help children learn Scratch, HTML, CSS and Python by making games, animations, and websites.

It gradually introduces coding concepts to allow children to build their knowledge incrementally, meaning there's also no need for the adult running the session to be a

computing expert.

iNorthumberland, part of Northumberland County Council's digital team, has introduced a number of code clubs, with almost 20 now active across the county.

Cllr Robert Arckless, cabinet member for children's services and a county councillor for Amble, said: "I am delighted that we have been able to help the Development

and also support a more digitally skilled workforce for the area in the future. There has been a lot of interest in the club already, both from young people wanting to join, and adults interested in volunteering to help."

If you are interested in establishing a club in your area or finding out more, visit [www.inorthumberland.org.uk/codeclub](http://www.inorthumberland.org.uk/codeclub)



Front row: Louise Spuhler (age 11) and George-Anne Carnegie (age 12) and Cllr Robert Arckless, cabinet member for children's services at Northumberland County Council. Behind are Nathan Fuller from the iNorthumberland team and Anna Williams from Amble Development Trust.

Trust to get the equipment they need to run a code club - providing opportunities for local children to improve their life skills and raise career aspirations.

"Coding for children has recently been introduced to the national curriculum so this will also help to meet educational targets. I wish the club success."

Anna Williams from the Amble Development Trust added: "We would like to thank Northumberland County Council's digital team for their support in achieving this funding - allowing us to buy Chromebooks and establish a code club. "The club will provide great opportunities for local children to learn the basics of computer coding

Boring, overpriced school photo time is here once again.

Commission affordable professional portraits of your loved ones instead



[www.ivorphotography.co.uk](http://www.ivorphotography.co.uk)  
[info@ivorphotography.co.uk](mailto:info@ivorphotography.co.uk)  
Handcrafted portraits on location or in studio.

7 George Street, Amble  
01665 798435  
07449 634824

Ivor Rackham  
Photography

Johanna Rackham



Myofascial Release  
Kinesiology Massage  
Nutrition

## Clinical Massage could help you with your

- Upper back pain
- Lower back pain
- Achilles tendon pain
- Neck and head mobility issues
- Carpal tunnel syndrome
- Tennis elbow & golfer's elbow
- Frozen shoulder
- Muscle/tendon injury
- Sciatica and many more...

Relaxing and Deep Tissue Massage also available.

Buy a gift voucher for a Feel Good present!

For appointments or enquiries contact

Johanna on **01665 798435 / 07768 873713**

email:[info@holisticjohanna.co.uk](mailto:info@holisticjohanna.co.uk)

Read more on [www.holisticjohanna.co.uk](http://www.holisticjohanna.co.uk)

# Fundraising mother and daughter leaving on a high

A fundraising mother and daughter are stepping down after 14 years, but say they are leaving on a high.

Katrina Cassidy and her mother Eleanor have been at the helm of the recent Shannon fundraising campaign, and now that the new lifeboat is here, the pair have decided to retire from Amble Lifeboat Fundraisers (ALF) committee.

Katrina joined the lifeboat fundraising committee shortly after moving to Amble in 2001. "My friend said 'come on and join, it's a great way to meet people' and a little while after that I dragged mother along," she laughed.

After retiring as an Intelligence Officer with Northumbria Police, Katrina became ALF's Treasurer in 2015 and then Chair the same year. Eleanor, who used to work for Castle Morpeth Borough Council, has been Vice Chair 'for umpteen years'.

Then they heard that they needed to fundraise for a new lifeboat. Despite a bit of a shock at the initial idea, the pair took the challenge of fundraising for the new Shannon lifeboat in their stride.

"When they said 'you've got two years to raise £200,000' I thought WHAT?" said Katrina.

"We used to have two or three coffee mornings a year, a flag day and bag packing day, and of course Harbour Day. We would probably raise £16-18k a year prior to that. But you've just got to think outside the box."

A photographic auction of world renowned photographer Steve Emberton's

rock and pop star photos raised over £400, and the campaign attracted funds from people and community groups from near and far.

The committee increased their coffee mornings to monthly.

Eleanor said "It grew so popular. Building the Harbour Village helped as well; before that not many people walked along this part of the harbour. The coffee mornings are so popular, people now come armed with boxes to take their cakes away. It's become a meeting place for lots of people."

And now all the hard work has paid off, with £227k raised and money still coming in. "We've achieved what we set out to," said Katrina. "The extra money will go to training and extra equipment."

The pair are grateful to everyone who helped raise so much money for such a worthy cause. The Shannon appeal was taken up by local organisations, big and small. Marks and Spencer and the Northumberland Gazette's Jam Jar appeal were a big help.

"In this day and age, when people are



Katrina and her mother Eleanor Cassidy are stepping down from Amble Lifeboat Fundraisers.

scrambling for money, and then you see the little'uns coming in with their jam jars of pennies, it gives you a warm feeling," said Katrina

People's generosity was breathtaking. "We even got three gold sovereigns in the collection boxes" said Eleanor.

The turnout to see the new lifeboat was also heartwarming, a testament to the whole team and crew's commitment.

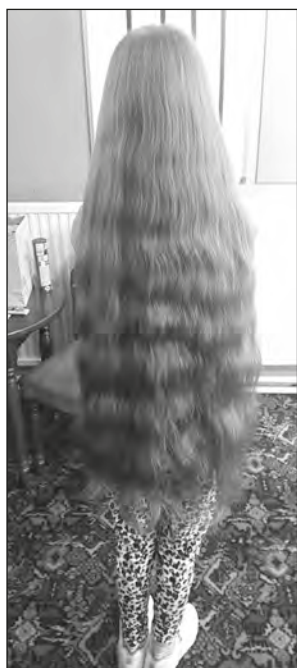
"Amble folks have always been there and are always supporting us. In some ways we feel as if the boat partly belongs to us all. It was so fantastic to see the Shannon come in. I cried!" said Eleanor.

*Anna Williams*

## Hanna's charity hair cut

Eight year old Hanna Rutherford from Amble decided to cut her lovely long hair for a children's charity.

Hanna, who attends Amble Links First school, had never had her hair cut before. On 13 November, she went for the chop, with a massive 21 inches cut and a huge £600 raised for the Princess Trust, who make wigs for children with cancer.



Hanna said "I was very nervous before the haircut but I was happy to be having it cut. It was exciting while my hair was being cut and I love my short hair."

Hanna's mother Sharon Crisp said: "Her current total is just over £600 which she is very happy about as it costs approx £350 to make one wig, so that will really help."

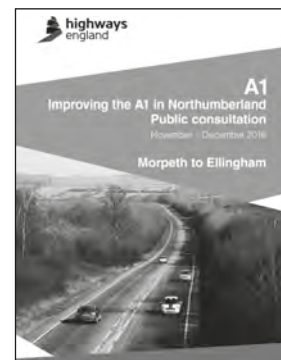


## A1 duelling consultation

Several consultation meetings were held in November by Highways England for the public to see the options for duelling the A1 and discuss their concerns with planners.

If you missed those events, you can also see the plans on their website: <http://www.highways.gov.uk/roads/road-projects/The-A1-in-Northumberland>

It is estimated that work could start on the A1 in 2020.



## Have your say on modifications to Northumberland Local Plan

Currently, Northumberland County Council is producing modifications to its Northumberland Local Plan. If you wish to comment or make suggestions on the content of the document, there will be an informal drop in event in Morpeth at the Town Hall, Market Place, on Tuesday 13th December from 2pm until 7pm.

Full details are available on the council's website at: [http://northumberland-consult.limehouse.co.uk/portal/planning/core\\_strategy/csfmm](http://northumberland-consult.limehouse.co.uk/portal/planning/core_strategy/csfmm)

The council will take into account responses to this consultation during January 2017, with a submission document considered by the council in February, and forwarded to Government in March 2017. Examination by a Government inspector can then be expected during mid to late Summer 2017 and formal 'adoption' in December 2017.



# cottages in

NORTHUMBERLAND



Looking to earn extra income from your holiday cottage?

Due to an increase in demand, we are looking for properties in your area that we can market on your behalf.

We can offer you:

- \* Competitive commission rates
- \* Full management service
- \* Professional photography
- \* 24/7 booking service



For a friendly chat call us on: 0191 231 3020

or email: [enquiries@cottagesinnorthumberland.co.uk](mailto:enquiries@cottagesinnorthumberland.co.uk)

[www.cottagesinnorthumberland.co.uk](http://www.cottagesinnorthumberland.co.uk)



## Funeralcare

Our caring staff are here to listen and advise you, 24 hours a day, 7 days a week



Coquetdale Cottage, Queen Street, Amble  
Tel: 01665 710437

- Cards
- Gifts
- Partywear
- Interiors

Call in and see our new ranges.  
Christmas gifts for all.

WISHING ALL OUR CUSTOMERS  
A VERY MERRY CHRISTMAS & A PROSPEROUS NEW YEAR

42 Queen Street, Amble, NE65 0BZ 01665 710982

### JOIN NOW FOR LESS THAN £1 A DAY

- ✓ Indoor heated swimming pool
- ✓ Sauna and steam room
- ✓ A fully qualified team on hand
- ✓ Fitness classes
- ✓ State of the art gym facilities
- ✓ Low cost packages to suit you

...plus much much more



The general public is always welcome so call our friendly team for more information today



01665 710 727

[www.parkleisure.co.uk](http://www.parkleisure.co.uk)

[ambleleisure@parkleisure.co.uk/amblelinks](mailto:ambleleisure@parkleisure.co.uk/amblelinks)

Amble Health & Leisure Club, Links Road, Amble, Northumberland, NE65 0SD

## Praise for Amble knitters



Readers may remember cancer fundraiser Judy Lewis who shaved her head to raise money for Macmillan earlier in the year (Issue 100).

During her campaign, Amble Pin Cushion held a tombola and organised hat knitting for children with cancer. Judy said "I expected maybe a couple of dozen hats, but they have given me a bag with 72! They have been knitted by groups associated with Amble Pin Cushion. I can't thank them enough. It's awesome!"

Amble Pin Cushion also raised £36.75 from their tombola. The hats will be given to children at the RVI Oncology Unit.

"It will be a nice thing for the kids to know someone who they've never met, cares" said Judy.



# Lots of new Houses Planned For Amble

On Monday the 3<sup>rd</sup> of October, Artograffi went to a public consultant meeting about the new houses being built behind the Acklington Road High School. We talked to Dominic and Jenny, two planning consultants from the NLP, to find out more about the pros and cons of building 500 new houses in Amble.

The new houses will help Amble and the economy by creating around 130 new jobs and creating more council tax to bring money to the area. When people move in, they will spend money on things like food and leisure; this will also bring money.

There will, of course, be negative impacts such as the traffic, litter and noise increase that comes with more people but Hindhaugh homes are trying to reduce the impact that will be caused. The new houses should benefit Amble lots.

ByLily



Above back row: Jenny and Dominic from NLP.  
Front row: Louise, Bethany, Ava, Lily and Abbey

## BAD CHRISTMAS MEMORIES

Not everyone has a great Christmas. Instead of good Christmas memories I have collected some of Artograffis bad Christmas memories.

Emma- someone close was taken to hospital

Ava: it didn't snow

Lily: my first Christmas having a little sister (just kidding she loves her sister or does she?..)

Bethany: a HUGE spider crawled on the wall

Abbey: Mam didn't wake up early

George-Anne: Mam passed away shortly after Christmas

Bethany: when she was 2 she threw a Dora doll on the floor and it shattered on the floor (poor Dora she just wanted to explore :)

Christmas isn't always perfect but just think of the happy things. Also think of the people who couldn't get a tree or parents couldn't afford Christmas dinner or presents. and maybe donate to charity to give a family a nice Christmas. If you need to talk to someone and can't talk to family then you could call ChildLine and they could help you, you can call them on 0800 1111.

And remember HAVE A MERRY CHRISTMAS PEOPLE

By Emma



## GRANNY'S XMAS CHOCOLATE CAKE

Me and my granny had a lot of fun making this chocolate cake and I had fun eating it, but also sharing with my family and friends.

You will need:

- 8oz of butter or margarine
- 8oz of caster sugar
- 6oz of sieved flour
- 2oz of cocoa powder
- 10ml of warm milk



Method

1. Preheat your oven to 180 degrees Celsius and 135 degrees fahrenheit or gas mark 4. Make sure you get a parent to do this as not to burn yourself. Now you need to grease to sandwich tins that are about 20cm.
2. Next cream together the butter and sugar until fluffy. Beat the eggs together and add to the mixture, adding a little flour.
3. Fold in the remaining flour and cocoa powder with a metal spoon
4. Divide the mixture between the two tins and bake for approx. 25 minutes until golden brown and firm to the touch. Remove from oven and leave to cool before turning out onto a cooling rack.
5. To make the butter icing, place the butter in a bowl and beat until soft. Gradually sift and beat in the icing sugar and then add enough milk / water to make the icing fluffy and spreadable. Sift and beat the cocoa powder in to the icing and use it to sandwich the two sponges together
6. And finally add your festive icing maybe a Christmas gift, tree or a Santa! I made this and had a lot of fun and so will you.

by Bethany

## Binky and the Perfect Christmas Card

Binky sighed as he looked through the many stalls of Christmas cards; there was nothing good enough for Bazzle, his best friend. He had told Binky that he had got him the perfect Christmas card so now Binky had to buy him a good one too. The problem being that there were no good Christmas cards: they were either too bright, too plain, too expensive and so on.

"Great," Binky muttered to himself, "what am I supposed to do now?" He wandered home, still thinking about how he could get a card for Bazzle. He could just not get him a card and just give him his present (a new toy

bamboo car), but Bazzle might think Binky hadn't tried. His mum would know what to do. When he got in, his mum was baking a yule log in the kitchen. Binky explained the problem and his mum smiled, handing him a piece of paper.

"If you want a really special card you should make one yourself, it will be one of a kind," she told him. So Binky spent the rest of the day drawing and decorating a card for Bazzle. By the time it was done it was sparkly, original and fun. The perfect Christmas card!

By Lily

## Style dilemma? Try Kawaii!

Kawaii is the Japanese word for cute, but has come to be a popular style among Japanese girls.

It involves cute animations, simple but bold themes, sweet styles

and a bubbly personality. Thing like Molang, Rilakkuma and Hello Kitty are kawaii, as well as hobbies such as drawing kawaii art and watching and reading anime.

There is also the kawaii style which consists of lots of cute, girly clothes with layers and sweet accessories.

As well as that there are things like kawaii



stationery and a cute bubbly personality that makes you likeable and fun. Kawaii is happy and fun; it may be just the style for you!

By Lily

## A (not so)brief history of Unicorns

A long long time ago, in the Nothing, Unicorn was somehow created. It took a long time, but it finally realised it couldn't be nothing - it had to be something! It realised it was a unicorn!



When the Unicorn Unicorn appeared, it created 6 different universes; the Flurstric universe (our universe), the Uromee universe (unicorn universe, where Unicornlandia is found), Cutie Patootie universe, Swuran universe, Norad universe and the Unspoken universe. All together they form the Gaustic.

The Gaustic is the collection of universes that form a different shape every 500 years. Right now they are in the shape of a lollipop.

When you turn 13, if you have loved unicorns all your life, you might become a unicorn princess or prince.

When everything was new, humans and unicorns became friends, even though there were lots and lots more unicorns (infinity). Only 3 unicorns have ever died. The unicorn-unicorn who was killed by a little girl, the stone unicorn, and the leafy green unicorn.

The murder of the unicorn-unicorn caused all the unicorns to go back to Unicornlandia.

Many many years later, the Shadows came to Unicornlandia and started the Unicorn war. This lasted about a year, until the Shadows finally gave up, and went back to wherever they came from. We suspect they will come back but hopefully not soon.

By Ava



## Why do we celebrate Christmas?

We celebrate Christmas because it is the birth of Jesus. Pope Julius in 1336 made Christmas on the 25 of December and now every year we remember the birth of Jesus. Christians believe Jesus is the light of the world. Christmas is a Christian celebration day.

These days we give gifts and spend time with family. We decorate the house for Christmas to make it look nice and Christmassy and also on Christmas we have a lot of food it is called a Christmas dinner.

**Do we need Christmas presents if we get treats all year around?** Yes we do need Christmas so we can remember Jesus

**Do we need Christmas presents if we don't believe in Jesus?** Yes because it is the time of year where everyone should be nice to each other.

By Abbey Wallace



## Christmas can be stressful for your family

Help your family, like help making the food, and wrapping the presents. Do not wind up your mam and your dad, or your sister or brother. Compromise with them. For example if you are arguing about the Xbox, agree who goes on first and who goes on later.

By Louise

## NEW YEAR RESOLUTIONS

I asked the Artograffi crew what their New Year's resolutions are and this is what we came up with:

Bethany: my New Year's resolution is to be more on time with homework and not break my phone.  
Ava: to try not to punch pat "her bestie"  
Abbey: hurry up on a morning

Lillian: try not to be annoying  
Louise: help my family  
Emma: sleep more  
Emily: run more, keep fit  
So this is ours what are yours?

By Bethany



# Toys & Trinkets

78 Queen Street, Amble



*Just round the corner Christmas is near, visit Toys & Trinkets to have a peer.*

*From wooden toys to a Didgeridoo, come to see what surprises you.*

*We are open till 6, so come and get your Toy & Trinket fix.*



## Merry Christmas!

## Cromie Pharmacy

### Are you flu safe? Get the jab!


**Flu can be a serious illness  
... are you at risk?**



*"a HEALTHY  
AND HAPPY  
CHRISTMAS  
TO ALL"*

Getting a flu jab can protect you all winter. It's free if you are over 65, pregnant, or have a long-term health condition such as severe asthma, diabetes, a chest, heart liver or kidney complaint or lowered immunity.

**You need to get the flu jab every year. The flu jab is quick, safe and free. To book your jab, visit **Cromie Pharmacy**.**

*This is an NHS funded service* 

**158 Percy St, Amble 01665 710 896**

*together...*

*a m b l e d e n t a l p r a c t i c e*

*we can make you smile*



- Up to £233.70 per course of treatment.

### Amble Healthy Smile Plan

- No upfront costs. Only £19.50 per month!

All the treatment and preventative advice you need to keep your mouth healthy is covered!

No surprises

A dentist of your choice

Convenient monthly direct debit payments

Early morning and late evening appointments to suit your busy lifestyle

You can join immediately

Contact one of our receptionists today to make a no obligation complimentary appointment to talk you through the application process **Tel: 01665710678** or Email: [enquiries@ambledental.co.uk](mailto:enquiries@ambledental.co.uk)



BDA Good Practice



## Tiny snail survives Northumbrian winters



A small snail, usually found in the Mediterranean region, has been recorded at Cresswell on Druridge Bay and is causing great excitement at Northumberland Wildlife Trust.

Up until now, the Mediterranean coastal snails commonly referred to as *Theba pisana*, have only been recorded in a number of sand dune systems in northern Cornwall and South Wales.

However, they have now been discovered in this region, 100 metres away from the Drift Café in Cresswell, by a mollusc expert on holiday from Lancashire, who went away and researched it before contacting the wildlife charity.

In Britain and France, the snail has an annual life cycle, breeding in summer and autumn, whilst in the Mediterranean; it has a biennial life cycle with breeding in autumn and winter. It is very frost-sensitive, so conservationists were very surprised to find them surviving the cold Northumberland winter, and think they may have been in the area for some time, possibly avoiding frost damage by burying into sand.

Upon further investigation it became apparent that this animal may have been recorded previously, possibly over 100 years ago, but the report of that appears to be lost in the

mists of time; additionally, the list of species records in Northumberland was found to be sparse.

Steve Lowe, Head of Conservation at Northumberland Wildlife Trust said: "What a survivor and what an intriguing find for the region, but so many unanswered questions exist including how long has it been here and how did it get here in the first place?"

"Whatever the answers, it will be interesting to see if it is having an effect on native species and early examination suggests it may be."

Questions have been asked as to how the animals arrive all the way from the Bristol Channel, and specimens have been sent for DNA analysis in the hope of identifying the origins of the Northumberland snails. But at present, its origins remain purely speculative.

If anyone has any theories, the wildlife charity would be interested to hear them! The trip also served as an introduction to mollusc recording, for local amateur naturalists in order to encourage recording. This was made possible thanks to the award of a small grant from ERIC NE (Environmental Records Information Centre for the North East of England), to the wildlife charity.



*Hauxley  
Parish  
Council*

**Budget 2017/18** - The Parish Council is preparing the budget for the precept for 2017-18 which will be decided at the January meeting of the Council. As Northumberland County Council has indicated efficiency savings over environmental services in the future years, it is important that we look at our expectations in terms of this service to ensure that it is maintained where possible. The Council welcome views from our electorate during this budgeting process.

**Village Phone Box** - As part of BT's programme of proposed public payphone removals due to low usage levels, the pay phone located in High Hauxley village was up for review by NCC. The Clerk had queried the usage and had been told that no calls had been made from the phone box in the last 12 months. The Members have agreed that they have no further objections to the payphone being removed.

**Noticeboards** - Both noticeboards in the parish will be temporarily removed to enable some restorative maintenance to ensure the noticeboards withstand the winter weather.

**Remembrance Day 2016** - Councillor Wendy Appleby represented Hauxley at Amble's Remembrance Day Service on 13 November 2016 and laid a wreath at the memorial on behalf of the parish.

**Local Transport Priorities** - The annual request from the County Council has been received for outlining priorities the Parish Council feel are required to improve road/pedestrian safety. It was agreed to retain existing parish council priorities:

**Resurfacing of the public byway from 28/29 Hauxley Links, NE650JR to the slipway in Low Hauxley** -

Reduce the speed limit to 20mph, Kirkwell Cottages and Low Hauxley

**Donation to CAN** (Community Action Northumberland) - Hauxley Parish Council agreed to support CAN with a donation of £20.00.

**Parking plea** - Residents and members of Hauxley Parish Council have repeated a request for all residents and members of the public to adhere to the parking restrictions to help alleviate the persistent issues with car parking and access in the parish. Parking within the parish will continue to be monitored. Residents are invited to write to the Clerk, Vicki Smith, if they would like to raise any issues at the bi-monthly parish meetings.

**Next Meeting** - 6.30pm on Monday 9th January 2017 in the Village Hall, Low Hauxley.

Parish Clerk: Vicki Smith

11 Acklington Road, Amble, NE650NF

Tel: 07875445495 Email: Hauxleyipc@hotmail.co.uk

[www.theambler.co.uk/category/news/politics/hauxley-parish-council](http://www.theambler.co.uk/category/news/politics/hauxley-parish-council)

together...

amble dental practice

we can make you smile

Merry Christmas and a Happy New Year

From all of us at Amble Dental.

We will be open for emergencies between Christmas and the New Year.



## Spreading investment across our roads

As the county braces itself for winter, there's some 'grit' news for drivers as Northumberland County Council has invested £1m updating its fleet of salt spreaders.

With a total of 29 gritters covering thousands of miles each year, the authority has just bought seven state-of-the-art machines as part of its rolling fleet renewal.

Costing over £100,000 each, the hi-tech machines help ensure the county stays open for business, whatever the weather.

Fitted with all-round cameras for real-time monitoring from base, the cameras also provide a high level of operational safety.

Other on board controls give the ability to change the amount and direction of salt being spread to account for differing road conditions.

The gritters are just one part of a major operation which swings into action during the colder months, involving over 100 staff, 36,000 tonnes of salt, 1,600 grit bins and more than 3,000 miles of roads.

Councillor Ian Swithenbank, Cabinet Member for Local Services, said: "With thousands of miles of roads in the county, our workforce is always well prepared to

meet the challenges of winter weather.

"The geography of the county presents unique challenges as it can be snowing over the tops but bright sunshine at the coast.

"Thankfully we have access to some state-of-the-art equipment, from detailed weather forecasting software to road mounted cameras across the region giving us real-time information on weather conditions, so we can establish exactly where needs gritting and at what level.

"And these days all the gritters are fitted with tracking devices to ensure their location is known at all times – providing an extra level of safety especially for those working in more rural areas."

"When we get bad weather it can really have an impact so we make sure our alerts page and the social media channels give residents clear information."

People can sign up to the council's Twitter and Facebook channels for information on school closures, severe weather warnings, winter service information, service disruptions and closures.

Twitter: @northumberlands

Facebook: @northumberlands/nccalerts

## Opportunity to be a ball boy or girl for NUFC

Want to give a young person a wonderful Christmas present this year which is guaranteed to banish the January blues?

Northumberland Wildlife Trust is offering a fabulous raffle prize, the opportunity for any young person (aged between 8 - 14) to be a ball boy or ball girl with the Newcastle United game with Rotherham at St. James' Park on Saturday 21 January 2017. The prize also includes two tickets to the game.

The unforgettable match day experience is being raffled by the wildlife charity and, with raffle tickets priced at £1.00, it's a chance not to be missed as it would make a fabulous Christmas present for any young football fan.

All money raised will be used to fund the Trust's vital conservation work around the region.

Tickets are available from: [www.nwt.org.uk/raffle](http://www.nwt.org.uk/raffle), and Hauxley reserve open days (10,11 December) and membership recruiters who will be at a number of venues around the region.

The draw closes at midnight on Sunday 18 December and will be drawn at the Trust's St Nicholas nature reserve at 12 noon, Tuesday 20 December.

The prize package has been very kindly donated to the wildlife charity by the Newcastle United Foundation.



## TRUST Life

news from Amble Development Trust

Welcome to the Christmas edition of Trust Life!

Well the nights are drawing in, the days are getting chilly and Christmas light are up – welcome to winter folks. Time for festivities, parties and present shopping and where better to begin than right on your doorstep. With so many independent shops you can be sure of finding something extra special and different from the run of the mill high street stores; safe from the hassle of city centre shopping and sore feet!

Speaking of festivities, we hope you enjoyed the procession and entertainment this year. As we were fortunate enough to secure £5k from the lottery for a community celebration we wanted the benefit to reach as many as possible, so where better to begin than with the lantern workshops, which are always a big hit with the little ones, then of course enjoyed by everyone as they parade down the street. The funding also allowed for entertainment so we opted for something rather spectacular with fire dancing and stilt walkers. It was lovely to see so many participating and picking up on the Alice in Wonderland theme – thanks to everyone for their wholehearted support.

Unfortunately the other event planned to celebrate the arrival of the new lifeboat did not go ahead on the day due to extenuating circumstances. So we still have that celebration to look forward to.

One of the community consultation events held in Fourways 2 has stirred up some strong feelings. This is a proposal

to build 500 houses at Acklington Road; however it is the effect on traffic and services which appears to be the main issue rather than the actual housing development itself. These are obvious concerns that need to be dealt with which I would expect NCC Planning to consider when/if an application is submitted.

The developer has said they will hold another consultation when plans have progressed further. Hopefully they will have noted the concerns of the public and be prepared to action them.

Sadly our 2016 application to Great British High Street didn't make the short list this year and while we can appreciate that you cannot win every year our greatest disappointment was that our nominations for best high street independent shop managers weren't short listed either.

Ann and Richard of 42 Queen Street were nominated because of their continuing support for many initiatives in Amble, not just for businesses but representing the community as well. As soon as the nominations were released both Ann and Richard received many messages of support so we at least know they are worthy winners.

As reported in the last Trust Life report, Anna is in the process of initiating a series of Code Club workshops. We are in receipt of Chrome Books, we have the technology and knowledge (I'm excluding myself from that comment), we just need willing students and teachers to participate, although she has already had several enquiries.

If you want to know more or would like to come along with your children to find out how to write computer code together, then contact Anna on 01665 712929.

Work to the welfare pitches is nearing completion and we have an electrician looking at installing a ventilation system into the changing rooms. Once that is complete we will be sorting out the sanitary ware and décor – which will make the building more user-friendly.

A long awaited decision on funding to initiate a Fisheries Local Action Group has been rewarded with a positive decision. Northumberland County Council and Northumberland Inshore Fisheries Conservation Authority made a joint bid for a FLAG for Northumberland, this success brings with it funding for fishing related projects.

Finally, another application we have pending is to set up a Coastal Community Team. If successful this could open the door to funding opportunities, as it acts as a form of endorsement, recognised by central government and offers networking opportunities with other groups who have faced similar issues.

That's it for this issue and for 2016. I'll conclude by wishing you all a very merry Christmas and happy and prosperous new year.

Julia and all trust staff  
[julia@ambledevelopmenttrust.org.uk](mailto:julia@ambledevelopmenttrust.org.uk)





Above: Form 4A Amble Modern School photo from 1955

Adam Kirkup, Brian Weightman, Richard Herdman, Ernie Hamilton, John Davidson, Bowflour, Bob Watson, Alan Nicholls, Brian Henderson, Eddie Neville. Peggy Dawson, Gladys Wright, Lorna Badman, Ray Billainie, Margaret Butternorth, Leonard Riddell, David Grey, Willie Payne, Doreen Foreman, Helen Willcox, Margaret Dixon, Louvaine Robinson. Audrey Simonsen, Jean Parkinson, Muriel Ogle, Joyce Coulter, Eva Pringle, Margaret Thompson, Lynn Angus, Doroty Melvin, Violet Taylor, Margaret Dunn. Form teacher Sidney Cummings. Ken Donald, Donald Mather, Billy Young, Selby Snaith, Leslie French, Gordon Gray.

## Class 4a's reunion

Ex pupils from Amble Modern School's class of 1955 have held a reunion, 61 years after leaving school. Organiser Audrey Jones said "The first reunion was held in 2000, we were 60 years of age. 18 classmates attended that one. 13 classmates were able to come to this one. Since the first reunion, eight classmates have died. Everyone in the class that could be found was asked to come."



Back row: Richard Herdman, Alan Nickalls, Robert Watson, Gordon Gray. Middle row: Neville Straker, Muriel Ogle, Ken Stewart, Selby Snaith. Front row Peggy Dawson, Dorothy Melvin, Audrey Simonsen, Doreen Foreman, Lorna Badman.

## Empty homes brought back into use

Empty homes across Northumberland will be brought back into use thanks to a project being delivered by Northumberland County Council.

Thirty homes from across the county will be repaired and released back onto the rental market, using a £750,000 grant from the Homes and Communities Agency's (HCA) Affordable Housing programme.

The council will be working with private landlords, who have homes which have been empty for two years or more, to identify the 30 homes to be included in the scheme. Each home will be assessed in terms of its viability, such as cost of repair work, future rental potential, housing need in the area and the

impact of it remaining empty on a community.

As part of the scheme the council will purchase and repair a number of empty homes, which once rented, would then be managed by the council's Homes for Northumberland team. Using an Empty Dwelling Management Order (EDMO), the council will also take over the management of up to 25 empty homes. Using the grant these homes would be returned to a habitable condition and rented out.

Where possible this will be done with the consent and agreement of the landlord or owner. However, if an agreement cannot be made, the council has the power, under the EDMO, to take the property from the owner, to secure its future. It is hoped that repair work

to the homes will be complete next year with each being available to rent no later than 2018.

Northumberland County Council's business chair, Scott Dickinson, said: "The council is committed to bringing empty homes back into use, where they can benefit and improve a community.

"Empty properties can have a negative impact on the sustainability of an area, affecting everything from local businesses to public services, such as schools and transport.

"Thanks to this funding from the HCA, we will now be able to work with private landlords to identify properties, which could be given a new lease of life and become a much-needed family home."

## Fusiliers concert raises over £700

A concert organised by the Amble and Warkworth Rotary and the Interact group has raised over £700 for the Amble Lifeboat and the Royal British Legion.

The concert by the band of The Royal Regiment of Fusiliers was held on Saturday 15 October in the hall of James Calvert Spence College (JCSC) in Amble.

Concert organiser and Secretary of Amble and Warkworth Rotary, Fred Calvert, commented, "The event was a great success and we're very grateful to JCSC for allowing us to use their Hall.

"The Interact Club, which is essentially Rotary for young people between 12 and 18 years old and has several JCSC members, allows young people to contribute directly



Pictured at the concert are Rotarian Stephen Kerry, President of Rotary and Major Kevin Crook, the Director of Music for the Fusiliers Band with members of the Band. The audience were well entertained with an excellent performance with a variety of music.

to community issues and is a great way to become involved, so we're very grateful

to the help they gave in the organisation and management of the concert."

Neil Rodgers, Executive Headteacher at JCSC, added, "We're always pleased to be able to help the local community whenever we can and especially for such a good cause. It was an excellent concert and thoroughly enjoyed by the audience. We enjoy very close links with the Amble community and events like this strengthen this special relationship.

"We also fully support the activities of the Interact Club which meets school curriculum requirements and the community aspects of the new Baccalaureate qualifications as well as the requirements of the Duke of Edinburgh Award scheme."





## CHRISTMAS DAY MENU

PRODUCED IN  
NORTHUMBERLAND



Presented by **THE KITCHEN**  
at The Masons Arms Amble

### Starters

Butter parsnip soup with parsnip game chips. Creme fraiche and chive garnish with crusty bread.  
Terrine of pork and chicken with apricot, pistachios, herbs, brandy and wrapped in streaky bacon. Dressed salad leaves with orange confit.  
Roast red peppers with baby tomatoes, fennel, basil, and garlic with crusty bread (V)  
Prawn cocktail with lobster and langoustine.

### Mains

Traditional roasted aged sirloin of Northumbrian beef.  
Classic roast crown of Turkey with chipolatas.  
Baked Ham with glaze of damsons and honey.  
Gratin of pumpkin with tomatoes in a rich cheese sauce and Rosemary. Topped with bread crumbs and pecorino cheese. (V)

All dishes accompanied with roast potatoes and rosemary.  
Roast parsnips with a maple syrup glaze and parmigiana dusting. Braised red cabbage with apple and Christmas spices. Brussel sprouts with sweet chestnuts and pancetta. Mashed turnips and carrots with Dijon and cracked pepper. Sage and onion stuffing. Luxury force meat stuffing with seasonal herbs, pistachio, chestnut and apricot. Cranberry orange sauce, bread sauce and Christmas gravy.

### Desserts

Traditional Christmas pudding with brandy butter  
Sticky toffee pudding with toffee and pecan sauce  
Lemon Torte

### And to finish

Mature Stilton, Crackers and handmade chutney and grapes.  
Mince pies.

### Price £45 per head

£20 deposit payable on booking. Balance payable by the 11th of December when we will need your choice of the first 3 courses. Please advise if you require a vegetarian option, or if you have any allergies, so special arrangements can be made.

All meats supplied exclusively by Amble Butchers. All other products locally sourced.

## Businesses to benefit from EU funded scheme

Northumberland businesses are set to benefit from a support programme that will stimulate growth amongst existing businesses, and support the creation of new businesses in Northumberland.

Arch (the arms length regeneration company of the County Council) will deliver a £1.3 million programme, which includes match funding of £698,599 received from the England European Regional Development Fund as part of the European Structural and Investment Funds Growth Programme 2014-2020.

The main objective of the Business Northumberland programme is to help businesses, across Northumberland grow and prosper.

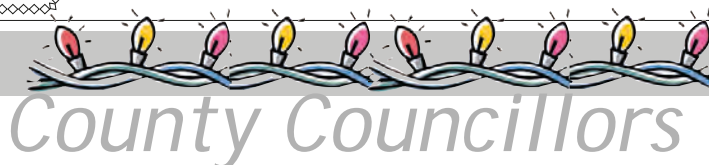
The new support programme will be delivered using a variety of methods to ensure easy access for businesses across the county.

A programme of workshops and events will be held across Northumberland throughout the duration of the programme and all participating businesses will have access to the Business Northumberland website, which will host a variety of evolving content and advice directly related to growing and sustaining a business.

Businesses will also have access to 1-2-1 advice and support delivered by Business Growth Advisers based at Arch. Businesses will access the programme either via the Business Northumberland website or through one of the Business Growth Advisers based at Arch.

The Business Northumberland programme will launch in January 2017. For more info please contact Lucy Cansfield, 01670 528453.

## REPORTS FROM OUR



## County Councillors

As chair of the Northumberland Inshore Fisheries and Conservation Authority, I am delighted the bid by the North of Tyne Fisheries Local Action Group (FLAG) has been successful in gaining funding from the European Maritime and Fisheries Fund of £800,000. This FLAG will cover the 14 fisheries communities in the Northumberland IFCA District which stretches from Berwick to North Shields and includes Amble.

Being established from March 2017 to September 2019, this funding will be dedicated to the fishing industry and projects will help to safeguard or create new jobs.

Decisions on project funding will be made by the local FLAG membership who have a shared interest and knowledge of fishing and aquaculture. Working with a Programme officer they will have responsibility for delivering a Development Strategy.

I am especially pleased that this success has resulted from the hard work of Northumberland IFCA and Northumberland County Council staff. It builds on the funding for the new lobster hatchery scheme at the harbour and before that the success in delivering the Harbour Village project.

Amble developed because of its harbour and it is good to see work continuing to sustain our fisheries in challenging times.

Following concerns identified on service standards and delivery I met with senior officers to look at how local services can be maintained and improved. I plan to undertake regular tours across my area to look at what is happening on the ground. I am pleased staffing issues are now resolved and support for street cleaning is in place for the winter season.

I stressed concerns that the Town Council had about issues this summer and hope that things can move forward positively.

My best wishes to each and all for the Christmas season and the year ahead.

Robert Arkless Telephone: 01665 711938  
Email: robert.arkless99@northumberland.gov.uk

At the moment everyone seems to be talking about the new housing developments scheduled for the Amble area. It is quite surprising that there are so many potential developments being discussed at the same time and makes you wonder where all the people are coming from to live here.

I estimate that over 900 homes have either just been built or are in the pipeline for the Amble/Warkworth area and I firmly believe that the infrastructure of our town will have great difficulty in dealing with the influx of people this will inevitably bring.

I am very concerned that the present system allows such large developments to take place without any thought being given to such things as availability of doctors, dentists, schools, parking etc. I could go on but I am sure residents of Amble know what I mean.

I am awaiting the final proposals for the latest 500 home developments and have made my objections loud and clear about access from the Acklington Road etc. I sincerely hope the developers listened to the comments of local people and have changed the initial plans. I will take appropriate action if the issues are not resolved.

One development I do welcome is the new hotel, which is something, along with a supermarket that I have been wanting for years.

Amble is definitely prospering and I see good signs for the future of the town but we must get the pace of things right or we will be in danger of creating problems for us all, I will continue to work to ensure that the town remains a great place to live in.

Jeff Watson available at  
Jeffrey.watson@northumberland.gov.uk  
Tel - 07802385367



Above: A new hide has been donated from the makers of the Vera TV series

## More firearms issued to Northumbria Police

Northumbria Police will be increasing the number of firearms officers by more than 50 per cent to provide reassurance across the force area. Last year the Home Office said they would be giving a chosen number of UK police forces more than £140 million to increase their firearms capability. The investment will help ensure the biggest cities in the country can respond quickly to any threat and provide reassurance to its residents.

Now the force has confirmed they will be increasing the number of Authorised Firearms Officers (AFOs) by 50 per cent so they can maintain that visible presence around the force.

Chief Inspector Simon Hall, head of the Firearms Support Unit (FSU), said: "There is no specific intelligence to say that this region is going to be a target for any sort of terrorist activity, but we have the capability to respond quickly if we ever needed to. We are one of nine forces across the UK who

have been provided with government funding to increase the number of our firearms officers and a 50 per cent increase is a significant uplift."

"Our firearms officers have been very visible at events across the region this summer and they have been very well received by the public at places like the Sunderland Air Show, Tall Ships and the Great North Run. That policy is something that will continue and this uplift will ensure we have the officers available to fulfil that demand and help our communities living and working in the North East feel safe."

Those joining the specially trained Firearms Support Unit (FSU) will be recruited internally. An intensive training course is already well underway and the first group of new AFOs joined the existing team earlier this month. New recruits have to complete three years of service in the force before they can apply to become an AFO.

As the winter months close in, the island is filling with birds seeking sanctuary and good feeding. The coves and rocks around Coquet are havens for small flocks of birds like purple sandpiper and curlew. The grassy plateau is rich in spent seed which draws in rather special little birds such as twite, normally associated with meadows and farmland.

The RSPB wardens have concluded the third cut of the grass on the tern nesting plots and robins, blackbirds and wrens are taking advantage of the disturbed ground where we have been working.

Our Coquet colleague, Tom Cadwallender, is heading out soon to carry out a winter wader count to add to the data we have collected over the years, which gives us clues into how well the island is doing in supporting our Northumberland wildlife.

A new arrival on the island has been a rather quirky hide, donated from the TV producers of the Vera programme. The filming of the new series is complete and the hide (a prop in one of the episodes) is having a new lease of life as a base for researchers based on the Coquet. See if you can spot it when the programme hits our telly screens in spring! The programme also features the smithy workshop of our own blacksmith artist and Coquet volunteer, Stephen Lunn.

The only disturbance at this time of year is the arrival of drones on calm days. Flying these devices such distances from the mainland is actually illegal and the island is also a Special Protection Area (SPA) which is designation put in place to prevent such unauthorized disturbance. Technology is coming to assist and support the bird population in the form of an "electronic blocker" which will prevent this nuisance from recurring. It's a shame a few can spoil it for the majority!

Paul Morrison, Head Warden RSPB Coquet Island

## Classifieds

### VACANCIES

Registered nurses required for Dolphin View care home please contact Jacqueline Bird. Telephone 01665 713339

### OFFICE ACCOMMODATION FOR RENT

Premium office space to rent with 24/7 access. Contact Julie at Amble Development Trust for more details. 01665 712929



## Lionheart Cleaning

Commercial & Domestic Cleaning Services

### Your One Stop Cleaning Service Provider

Our ever expanding teams of fully trained and insured operatives are insured and able to carry out all of the following aspects of Domestic and Commercial cleaning for you, or your business.

Carpets and upholstery	Conservatory	Pressure washing
Windows	Roofs	End of Tenancy
Gutters/Fascias	Commercial	Post Build
	Kitchens	General

01665 713448 [www.lionheartcleaning.co.uk](http://www.lionheartcleaning.co.uk)

## Sullivan Associates

CHARTERED BUILDING SURVEYORS

Offering professional property advice throughout Northumberland

Building Surveys, Defects Inspections  
Plans drawn for extension and new build  
Planning Applications, Building Regulations Approval  
Disabled Access Advice, Party Wall and Boundary Matters  
Design and Project Management

Tel: 01665 513010

Email: [info@sullivan-associates.co.uk](mailto:info@sullivan-associates.co.uk)

Fourways 2 6 Dilston Terrace Amble Northumberland NE65 0DT





# Amble Town

# COUNCIL

Meetings 6pm unless stated otherwise  
Town: 8th Dec, 12th Jan, 9th Feb  
Amenities: 26th Jan.



## SEASON'S GREETINGS TO ALL

**THE BUDGET** is finalised early in the new year as we have to inform NCC what we require so they can factor that into next year's council tax. We are looking at some things the community have asked us to include. We are aware that people want better signage around the town to guide to places of interest, parking etc.; We also know that many would feel safer and more secure with some CCTV, especially in the central area.

Also everyone keeps asking when the Memorial Clock will be working again, so we need money for those repairs to be carried out and for measures to help lessen the risk of damage in the future. While we are still working with NCC to get a large car park for the town, we will have to set aside our £2,000 contribution towards having the temporary car park behind Tesco in operation for another year. Ongoing maintenance of what we already have and these new items are just some of our objectives for 2017-18.

Each year in the Council's budget there is an allocation for **GRANTS AND DONATIONS** to help community organisations, either within the town or whose work helps our residents. We award small amounts to assist with projects.

Most of these groups are run by volunteers but occasionally we have given to others if we felt the cause was worthy of support. In the last eighteen months we have helped with crowd barriers for Tiny Woods Football, large size games for Puffin Lounge (the dementia friendly group), covers for the Coastal Rowing Club skiffs, a gazebo for the Lifeboat Fundraisers, a projector for the Army Cadets and darts board sponsorship for Amble Open Darts. We recently helped our local police by buying bicycles to enable them to cover a greater area than on foot and to enter into estates and streets where it is difficult for patrol cars to go.

If you are part of a community group who need a 'helping hand' then take a look at the Grants Application on the Council's website to see if you could be eligible.

## HISTORY TRAIL

The long awaited information boards are due to be delivered now so hopefully everything will be in place for a brisk winter's walk along the two routes. There will be boards at the Braid, the Mound overlooking the Harbour, Paddlers Park and along Links Road. Coloured waymarkers- using the wood from old church pews, crafted by H.M.P. Northumberland prisoners will be positioned along the way to guide you. Many people have asked for more information than fits on the boards or leaflets, so we have produced a booklet- 'Reflections'- a light hearted look at some of the town's past. We hope local outlets will stock it and that many of you will agree it is great value at only £2 a copy.

## FOOD BANK

This is a plea for a permanent home to store items given to this valuable community resource. The need for the help this gives to families in particular will be even greater over the winter months. The organisers are desperate for a small secure room in which to place everything and to have access once a week to sort it into parcels to be taken out for delivery. All they need is something the size of a walk-in cupboard or a small bathroom- nothing palatial, just functional. Please see if you can help as without this space, the food bank will cease to operate early in the new year.

## FEEL GOOD

It's almost unbelievable that a new bench installed on a Friday afternoon was vandalised overnight! What sort of people can 'feel good' about this type of action when their time could be much better used in helping those who are working so hard to improve the town and the availability of activities for everyone.

Help with flowerbeds in the town square or the wonderful Christmas Lights, take part in a litter pick or the Christmas Parade, organise activities for various age groups or join one of the many interest groups. Let's all 'feel good' about our actions, be proud of the wonderful place where we live and help to make it even better.



The bench on Amble links was vandalised within 24 hours of being installed

## COUNCILLOR'S CORNER

The Christmas events are planned, we've had the parade, the tree is up, the lights are on and the turkey is looking nervous. It's now time to start planning for next year.

I want to put out a call to any local group that would like to organise an event under the banner of the Puffin Festival to be held in 2017 from 27th to 29th May.

Let your imagination run loose: is there a swimming club that could organise a mass dip in the sea, a walking football competition, a fun bike ride or a running club puffin 5k?

If you can organise something please get in touch with me for a chat.

*Cllr Martin Horn*

## DROPPED KERBS & T-BARS

Around the town there are places where the pavement kerb has been dropped. This enables those with prams and pushchairs to cross the road but more importantly those with wheelchairs or walkers or in mobility scooters to do so more easily.

Several areas also have white T-Bar markings on the road beside the kerb. These signal to drivers that they should not park here so that it leaves a safe crossing point accessible. Why do people ignore them or do they decide 'I'll park where I want!'

Please, motorists, be more considerate and think of those struggling to get out and about on a daily basis and be thankful it is not you.

## EAST WARD:

Robert Arkless,  
37 Anne Crescent,  
Amble NE65 0QZ  
Tel: 01665 711938

Helen Lewis,  
5 Meadowburn,  
Amble NE65 0PH  
Tel: 07751 229 739

Craig Weir 76 Priory Park,  
Amble NE65 0HY  
Tel: 01665 712342

## WEST WARD:

Ian Hinson,  
11 Eastgarth Avenue,  
Amble. NE65 0LW  
Tel: 01665 710583

Jeff Watson  
Friarsgate  
14 Magdalene Fields  
Warkworth NE65 0UF  
Tel: 07802 385367

Terence Barton  
1 Rivergreen  
Amble NE65 0GZ  
Tel: 07746676786

## CENTRAL WARD:

Kate Morrison,  
3 Island View,  
Amble NE65 0SE  
Tel: 01665 711191

Jane Dargue (Chair/Mayor)  
10 Sylvia's Close,  
Amble NE65 0GB  
Tel: 07795360513

Martin Horn  
22 Mariners View  
Amble NE65 0JH  
Tel: 01665 712836

TOWN COUNCIL OFFICES, FOURWAYS 2, AMBLE. NE65 0DT Tel: 01665 714 695 [www.amble.gov.uk](http://www.amble.gov.uk)

Email [ask@amble.gov.uk](mailto:ask@amble.gov.uk) Twitter: @AmbleTC Facebook: [www.facebook.com/AmbleTownCouncil](http://www.facebook.com/AmbleTownCouncil)

Office hours: 10-11.30a.m. & 1.30-3p.m. Monday to Friday

Elaine Brown Town Clerk

Minutes available to view in Office or online

## Robbin' Robin's Warkworth Date

Robin Hood and his gang of merry men make the trip north from Sherwood Forest to get up the nose of Nottingham's Sheriff in Warkworth. The arrows fly thick and fast along with gags, dances and 'he's behind you!' action as the cast of villains, fools, heroes and heroines bring Bob Hammond's take on the traditional tale to the Memorial Hall stage.

The annual local drama group panto is packed with music, romance and slapstick, and audiences will be invited to get involved with encouraging cheers at the sight of the goodies, loud boos when the baddies appear, and wild applause throughout.

Produced by Antonia Hoskins Brown and Gary Brown.  
Staged on Thursday, Friday and Saturday, December 8, 9 and 10 at 7.30pm, matinee Saturday, 2.30.

Tickets: Adults £7, children £5. Discounts for groups of 10 or more. Available at N&F Young of Amble, Warkworth Village Shop and online: [www.warkworthdrama.org.uk](http://www.warkworthdrama.org.uk)



## Rotary events



Rotary has been busy along Rotary Way where members have planted 1500 crocus bulbs adjacent to the footpath and opposite those areas which have recently been sown with wild flower seeds. The purple will highlight Rotary's continuing battle to rid the world of Polio. When children in a third world country are given the polio vaccine, each child has his or her little finger dipped in a purple dye to prove that they have been vaccinated.

Pictured above is Rotarian Stephen Kerry, President of the Rotary Club of Amble and Warkworth, presenting a cheque to members of the Amble Ladies Netball team. The money will be used to buy new balls for the junior and senior teams. Receiving the cheque is Taylor Enstone, Vice-Captain of Amble Ladies B Team and junior coach, who approached Rotary for help. On the extreme right is Jude Coulter who has coached the team for 25 years.

## Fairs Club event

A special function is to honour and pay tribute to Newcastle United legend Malcolm MacDonald on Thursday 5 January at 7pm in King Street Social Club, North Shields.

The 'Talk-in Style' function will be hosted by John Gibson and guests Vic Keeble, Iam McFaul, Stewart Barrowclough, Alan Kennedy, and Keith Kennedy will be attending. Another former Newcastle United legend will also make a surprise appearance. A number of other ex-players and World Champion boxer Glen McCrory will be present.

A silver salver will be presented to Morpeth Town FC to mark their magnificent achievement in winning the FA Vase.

For tickets at £10 ring 07985198222, 0772831794 or 0191 2900473. Discount may be available for block booking of 20 or more persons.

## Warkworth Golf club roundup

We are now well into the winter season and it is a good chance to look back at another successful year at Warkworth Golf Club. In the Ladies Section, Lynn Langlands swept all before her and will be picking up seven trophies at the presentation. Garry Henderson dominated the men's competitions. Returning to the club after a brief sojourn elsewhere, Garry won the Club Championship, the Calcutta Cup (singles knock-out) and with partner Dave Gray, the Foursomes knock-out. Garry and Dave will now have the formidable responsibility of trying to emulate the performance of Mel Patterson and Gary Scott as the Club's representatives in the 2017 Daily Mail Foursomes. The Club's various open competitions all attracted good fields and winners from as far afield as Perth in Scotland and Darwin in Lancashire are now spreading the word that Warkworth is a great course to play. Once again the course has received high praise and the warm welcome in the clubhouse is frequently highlighted.

At the time of writing the Turkey Trots are well underway. Garry's great form continues and he has won two of the four rounds so far – but he is under pressure at the top of the leader board where he is tied with Ross Young on 20 points and two behind current leader, Les Graves.

The Club is intending to make good headway over winter with replacing the Killie Bridge. Greenkeeper Alan Dalby is using his woodworking skills to good effect and four of the required six A-frame legs have been built. The remaining two will soon follow and then they will be transported to the site and erected on the previously laid concrete foundations.

Membership remains open. Full membership is just £330. Juniors under-18 can join for just £10 and there are staged increases for those aged 18-28. Green fees are a very reasonable £10 for 18 holes (£8 for 9). Full details on the Club website [www.warkworthgolfclub.co.uk](http://www.warkworthgolfclub.co.uk) or from [secretary@warkworthgolfclub.co.uk](mailto:secretary@warkworthgolfclub.co.uk)

## Good listener? We need you

Macmillan Cancer Support and Age UK Northumberland have combined forces to provide one-to-one support, help and information for people over 50 affected by cancer.

If you are faced with a cancer diagnosis it can be a lonely and confusing time, particularly for older people. Even with the support of loved ones, many people do not wish to share their worries or troubles with friends or families. This is where the Cancer Advocacy Programme can help.

The project is about ensuring that older people are supported in making their opinions, concerns and choices known. To do this we need special people to train as 'volunteer advocates' – a role that requires someone who will listen, is non-judgemental and willing to assist in accessing appropriate health and care services.

Gil Owens has been volunteering with us for over one and a half years. Having had a past diagnosis of prostate cancer, Gil wanted to use his experience and knowledge to support others. Gil says "Not everyone wants to or feels able to talk to people close to them so an independent listening advocacy service can fill this gap. I would say to anyone thinking of becoming a volunteer that it is extremely rewarding work that offers the opportunity to develop new knowledge and skills."

If you have had experience of cancer – whether you have had it or someone you have cared for has and you are interested in this project, please contact us. We are looking for people who can spare three hours or more a week on a regular basis at locations throughout Northumberland. Training, expenses and full support will be given.

Please contact Karen Renner at [Karen.renner@ageuk-northumberland.org.uk](mailto:Karen.renner@ageuk-northumberland.org.uk) 01670 784840



## Celebrations at St. Mark's

**F**estival Service for everyone (Carols - old and new) followed by a pooled tea in the hall. Sun Dec 18 at 3.00pm

Round the Christmas Tree! A short service on Christmas Eve for children aged 0-100. Sat Dec 24 at 5.30pm

Christmas Day service. Sun Dec 25 at 10.30am

The Puffin Lounge will be taking place on Thursdays Dec. 22 and Jan 5 as usual, from 2-4pm This is an afternoon for anyone to drop by for a chat, to play dominoes, snakes and ladders, draughts, etc. over tea/coffee and something nice to eat. People living with dementia and their carer or family member are especially welcome.

WOW (Worship on Wednesdays) will be taking a break...no WOW sessions on Wed Dec 21 and 28.

We'll resume on Wed Jan 4 at 1.30pm. All are welcome to this very short time of reflection and meditation in our church porch.

We always have scones/cakes and tea/coffee to follow.

For further details on any of the above contact

Sue Swanston 01665 711177

## Warkworth Northumbrian Ceilidhs

**T**he Christmas Ceilidh will take place on Tuesday, 13 December at 7.30pm in the Memorial Hall, Warkworth. We will have a live band with a caller who will guide you through the dances. No experience necessary, just a willingness to have a good time. Tickets are £5 on the door. We don't have a bar, so please bring your own refreshments.

Frequency of Ceilidhs next year is yet to be determined. For further details of the Christmas Ceilidh and for dates in 2017, please see the website at [www.northumbriafolk.org.uk/warkworth.html](http://www.northumbriafolk.org.uk/warkworth.html) or contact Pete/Kate on 01665 711388.



## Contestants wanted for new TV show

**B**BC Entertainment North is looking for 'fun and lively' contestants for an exciting new quiz show. You will need to use strategy and tactics as well as general knowledge to answer a mixture of multiple choice and brainteaser questions to be in with a chance of winning the prize pot.

Can you spot the weak players in your team in order to boost your chances of winning big?

- Test your tactics!
- Setup your strategy!
- Generate your game plan!
- Point out the perfect players!

Six players start the quiz, but the team becomes divided very quickly. Identifying each player's strengths and weaknesses early on is vital, as one contestant will become the leader and have control over which of their five teammates answer general knowledge questions to increase the prize money. It is important for the leader to pick the correct team mate to answer the multiple choice questions in order to boost their chances of winning big.

At the end of the round, if any of the five team mates think their leader is letting them down, they have the chance to challenge them and take over their role, resulting in the original leader leaving the show.

One of the six team mates must leave the show after each round so if the team don't challenge their leader, they will have to go head to head with each other. This continues until only two players remain and they will play together in the final.

If you think you've got what it takes to walk away with the prize pot, get in touch ASAP!

BBCNorth.Casting@bbc.co.uk

[http://www.bbc.co.uk/showsandtours/takepart/exciting\\_bbc\\_quiz](http://www.bbc.co.uk/showsandtours/takepart/exciting_bbc_quiz)

## Amble Pin Cushion workshops

**F**riday 16 December Knit and Natter Xmas Special 10am – 12 £4.50 Wear your Christmas jumper!

Please contact the shop to book your place by paying your deposit. Cash payments preferred, BACs is ok. No pre-booking needed for Knit and Natter sessions.

Ask to be added to our mailing list or view updates on our Amble Pin Cushion Facebook page.

We would love to hear from potential tutors interested in running a course in our craft room. We are particularly interested in tutors with DBS who can run workshops for children during school holidays. Closing Christmas Eve at 2pm, reopening Tuesday 3 January 9.30am



## January wildlife trust events

**W**e have loads of great, varied events with something for everyone. All our events with full details and booking are available online <http://www.nwt.org.uk/whats-on>. Please note all children under 18 must be accompanied by an adult.

**Hauxley Open Weekend**, Hauxley Nature Reserve, Sat & Sun 14 & 15 January 10am–4pm. Our public open weekend allows you to see the progress we are making on our innovative new visitor centre and other site improvements. We will endeavour to open footpaths to allow access to hides where possible. This will be a free event but donations welcome.

**Discovering the Birds of Druridge Bay**, 16 January.

Join local bird expert Tom Cadwallender on a 10 kilometre guided walk from Cresswell Pond to Hauxley Nature Reserve to identify the many different birds that can be found along the fabulous Druridge Bay coastline. Please book places online.

**In Focus**, Hauxley Nature Reserve, Sun 15 January and Sun 12 February 10am – 4pm. An opportunity to try and buy a range of binoculars, telescopes and other optical equipment at our popular Hauxley Nature Reserve. Free, but donations welcome.

**Hauxley Open Weekend**, Hauxley Nature Reserve, Sat & Sun 11 & 12 February 10am–4pm. Our public open weekend allows you the opportunity to see the progress we are making on our innovative new visitor centre and other site improvements. We will endeavour to open footpaths to allow access to hides where possible. This will be a free event but donations welcome.

**Guide in the Hide**, Hauxley Nature Reserve, Sat 12 February 9.30am – 3.30pm. A volunteer/staff member will be on hand to point out birds and other wildlife on the site. No dogs allowed. This is a free event but donations are gratefully received.

Visit our website on [www.northwt.org.uk](http://www.northwt.org.uk)

## Art and photography classes

Watercolour for Beginners: 18 January 13.30 -15.30 5wks

Introduction to Digital Photography: 23 January 13.30 -15.30 5wks

Held in Bridge St Room Old Fourways Centre NE65 0DR

Contact Karen Clough, Northumberland College:

[karen.clough@northland.ac.uk](mailto:karen.clough@northland.ac.uk)

## Do you want to date a celebrity?

**T**he E4 dating show, Celebs Go Dating are looking for people to take part in our next series.

We are looking for singletons, aged over 18 who fancy a date with one of our celebrities. E4 viewers who take a shine to our celebrities can apply to take part but will only get selected for a date night if the experts think they have a real chance of being compatible.

If you or your friends are single, aged over 18 and fancy a date with one of our celebs, then please email [dating@limepictures.com](mailto:dating@limepictures.com)

## Lifeboat fundraising continues

Amble Lifeboat Fundraisers are very grateful to the support they are still getting. A cheque for £1,289.20 was presented by Amble Cricket Club at our Coffee Morning in September. This was money raised earlier in the year for the Shannon Appeal.

The Rotary Club organised a concert in JCSC School in October in aid of the Royal British Legion and the RNLI and each was presented with a cheque for £325 on 15 November 2016. Bede Street Club in Amble hosted the Howard Baker Band in October and a donation is to be made to ALF. A good night was had by all.

The Annual General meeting will be held in the Lifeboat station on Wednesday 11 January 2017 at 7pm. All are welcome. We are making an appeal for new committee members to help organise events and general fundraising. If anyone is interested, please ring either of the telephone numbers shown below or come to the AGM in January. You will be most welcome.

The Christmas Coffee Morning will be held on Sunday 18 December, from 10am till 1pm. There will be tombola and the usual yummy things to eat. Please come. It will be a good start to your Christmas festivities.

Once again, on behalf of ALF committee members, may I thank you all for your unwavering support. We could not have managed without it. A very happy Christmas and good wishes, health and happiness for 2017.

*Eleanor Cassidy, Vice Chair ALF, on behalf of the committee.*

*Tel: Katrina on 01665 713898 and Eleanor on 01665 713479*

## Warkworth History Society

9 January 2017 Warkworth History Society 7.30pm Sun Hotel Warkworth-Andrew Griffin: The Brontes

## Rotary Santa's route



Friday December 9 Amble west 5:30pm - 7:30pm

Monday December 12 Amble central

Tuesday December 13 Amble east Broomhill St 5:30pm - 7:30pm

Wednesday December 14 Amble south 5:30pm - 7:30pm

Friday December 16 Amble Wynd and Warkworth north

5:30pm - 7:30pm

Saturday December 17 Amble Queen St (street collection) from 9:30am

## Season's greetings from art club at Trinity

I would like to say thank you to my Art Class for doing some great work and give a warm welcome to our new members who are enjoying painting and bringing many laughs to our hall. I would also like to say thank you to Joan Scott for looking after us so well on Tuesday evenings from 7pm - 8.30pm. Can I take this opportunity to wish all members past and present a very Merry Christmas and hope that in 2017 we will have more good classes on Tuesday evenings? Our new members are thoroughly enjoying it so far and past members will be welcome to return after the New Year, we'd love to see you.

*Pauline Thompson*



## Christmas Choral concert

The choir of the Mid Northumberland Chorus presents a celebration for Christmas at St. Cuthbert's Church, Amble, on Saturday 10 December at 7.30pm

entitled 'In Dulci Jubilo'

Soprano soloist Jane Corbitt, Reader John Barker,

Accompanist Emma Straughan, musical director Paul Toward.

Tickets at £5.00 are available from the Chorus,

by phoning 01670 788869 or at the door.

## Merry Christmas from Tiny Woods

Tiny Woods Academy hosted the popular Striker School at Stobswold Welfare during the October half term holiday.

The camp was hailed a huge success by both children and parents. Children participated in fun, technical coaching sessions, learning different techniques on striking the ball, playing the role of a striker, finishing under pressure, attacking combination play and counter attacking.

FA Licensed Coach Josh Rutherford said 'It was such a fantastic week, the children have had a brilliant time and are taking great strides in their technical development'.

2016 has proved to be yet again another memorable year for Tiny Woods Academy! We are proud of what has been achieved this year and we can't thank you enough for the continued support!

Special coaching guests were former Newcastle United and Sunderland AFC stars Nolberto Solano, Olivier Bernard, Julio Arca, Gary Bennett and Kieron Brady. And we made our TV debut on Football Matters on the Made In Tyne & Wear channel!

We wish all the children and parents of Tiny Woods Academy and the Ambler Readers a very Merry Christmas and a Happy New Year!

*Tiny Woods Football Academy Team*



**NORTHUMBERLAND**  
COUNTY COUNCIL

**County Councillor Robert Arckless**

*will be holding surgeries on*

Friday 27 January  
at 6pm - 6.45pm in Hauxley Village Hall  
and

Saturday 28 January  
from 10am-11am in Amble Library

*All Constituents Welcome*



TELEPHONE ORDERS WELCOME

**01665 710 442**

MONDAY TO SATURDAY: 11.30AM-9.00PM SUNDAYS: 11.30AM-2.30PM

\*\*\*\*\* NORTHUMBERLAND COUNTY COUNCIL

1 BROOMHILL STREET AMBLE NORTHUMBERLAND NE65 0AN





Floats and a fire dancer, made this year's Torchlight Procession a magical occasion

# Amble lights make a Christmas wonderland



Above: Harry Angus (9) switched on the Christmas lights with Amble's Mayor, Jane Dargue. Brambles children decorated the High St Christmas tree, which was donated by Amble Business Club. This year's procession theme was Alice In Wonderland. Photos and video on our website



Photos by Andrew Mounsey and Anna Williams



Above: Selina McNamara, Amelia-Rose Charlton (2), Lily-Mae Charlton (3) and Scarlett McNamara (10) meeting Santa. Princesses in the Procession