

The Ambler

Amble's Community Newspaper

Issue 105 July/Aug 2017

Local Elections

New councillor takes his seat

Labour's Terry Clark won his first local election and takes over the Amble with Hauxley and North Broomhill ward seat, recently vacated by Robert Arckless.

Terry has joined the North Northumberland Area Committee and the Strategic Planning Committee.

A strong Trades Union supporter, Terry is Branch Secretary of construction union UCATT.

He has been a painter and decorator for Northumberland Estates for the past 34 years, and says he is looking forward to representing the Amble constituency.

"This is a great honour and privilege, representing this great area we live in. Thank you."

Terry is now getting to grips with his new role.

"I'm learning the ropes from attending training sessions and seminars at county hall, attending committee and full council meetings in County Hall Chamber, playing my vital role in local democracy, the pivotal point of which is serving the people of Amble."

General Election

Conservative retains her seat

Anne-Marie Trevelyan held the Berwick Upon Tweed seat with an increased majority, gaining 52% of the vote for the Conservatives.

Labour's Scott Dickinson jumped to second place while Julie Porksen for the LibDems fell to third. Green Party candidate Thomas Stewart was fourth.

The turnout was 71.8%.



Jeff Watson is councillor for Amble West with Warkworth.

Amble councillor becomes Deputy Civic Head

Amble West with Warkworth, Conservative County Councillor Jeff Watson, has been appointed Northumberland County Council's Deputy Civic Head, and hopes to become chair in 2018.

Jeff told The Ambler, "I'm happy to support Anthony Murray as chair this year and I look forward to being chair next year."

Jeff with his wife June will represent Northumberland County Council to engage with the people of Northumberland at community events and public engagements. His first official duties were at Morpeth Fair and Stockton's Armed Forces Day.

"I'm looking forward to all my civic duties this year" said Jeff, who has been a councillor since 2003.

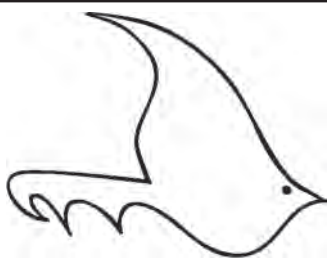
This is a ceremonial role that is different from the council's political leadership.

Bottlenose dolphins play in the harbour mouth



Dolphins are becoming a regular sight again in the Friendliest Port. This pod of playful bottlenose dolphins was seen enjoying life in the harbour mouth at the beginning of June. These photos were taken by artist Katie Henery of Niche Pod in Amble Harbour Village. Katie wrote on her Facebook page "Another unbelievable visit from the bottlenose dolphins to Amble Harbour this morning!!! Amazing views of a pod of around 6 or 7 very active dolphins at about 11am in the harbour mouth."





The Ambler

Fourways 2
6 Dilston Terrace
Northumberland NE65 0DT
Tel: 01665 712929
www.theambler.co.uk
editor@theambler.co.uk
Twitter: AmbleByTheSea
YouTube: AnnaAtTheAmbler1



Follow us on Facebook
Follow us on Pinterest

Editorial Team:

Vivienne Dalglish - Cath Findlay
Norma Hinson - Mir Jannetta
Tim Jones

Editor: Anna Williams

Thanks to:

Mark Beswick & The Artogرافي Crew
Bartle Rippon & Andrew Mounsey

Distribution:

Dawn, Taylor, Bill and Rachel

Printing:

Azure Printers, Pegswood

Would you like to join
The Ambler team? We are a friendly
group who welcome contributions
and help from anyone who would
like to volunteer.

Thanks to all our contributors,
sponsors and advertisers:

Community Foundation
Coquet Fund

Inner Wheel Club of
Amble and Warkworth

Rotary Club of
Amble and Warkworth



The Ambler is a project of
Amble Development Trust

The views expressed in The Ambler
and The Ambler Online are not
necessarily those of
the Editorial Team

Printed on paper from sustainable
forestry in the UK

Promised investment is now under review

Politics is about people, says Robert Arkless MBE (see page 3) - and if you ever needed confirmation of this, look no further than the recent local elections.

The Conservatives are now in control of Northumberland County Council and, true to their word, have immediately stopped and even reversed decisions made by the previous administration.

But it seems Amble is now left in limbo, as promised investment is now under review.

Despite assurances that Arch is still delivering its services, (see p15), The Ambler has been unable to secure assurances that the hotel, car park on Braid Hill (ex Tesco site) and housing on the Industrial Estate will still go ahead.

Now we also hear that the £9million announced at the beginning of the year for improvements to JCSC may also be in doubt.

The three large housing developments which have raised so much public concern are still going through the planning process, although it remains to be seen whether the restructure of committees (see page 18) into Local Area Councils will have any impact on what can or can't be approved.

"We want to help communities to help them create their own futures, rather than impose large projects or developments on them," says NCC leader Paul Jackson.

This may be good news for those opposed to the new houses, but most of us were keen to see a hotel, and welcomed the idea of a new car park. Investment in our town is crucial.

The Ambler will continue to ask our county councillors and officers to keep us informed and stop the uncertainty. They have proved they can make quick decisions when they want to.

Amble's Old Boat House wins 'Best Coastal Fish Restaurant' for second year running



Martin Charlton, Ruth Charlton and Daryl Duffy at the Fishing News Awards

The Old Boat House has won 'Coastal Fish Restaurant of the Year' in the 2017 Fishing News Awards for the second year running. The restaurant was the only venue in the North of England to be nominated with competition from top restaurants all over the UK.

The prestigious award recognises restaurants that have shown outstanding support for the commercial fishing industry in their local area.

The Old Boat House Food Group owners Martin and Ruth Charlton were thrilled to receive the award again, believing it will greatly benefit the coastal community by raising awareness of North East tourism and providing employment opportunities in the region.

Speaking after the ceremony in Aberdeen Martin said, "We really hope this award shines a light on Northumberland, bringing in more

visitors to boost the local economy. We want to further our commitment to giving young people opportunities to gain employment and learn high level skills."

On the back of the award Martin and Ruth hope to expand The Old Boat House premises and take on more staff.

Ruth said, "To win this for a second time is amazing and it proves we are consistently dedicated to great food, service and sustainability. We hope winning this award will help us grow our business and expand our team in the coming year."

The Old Boat House Head Chef Daryl Duffy added, "The support we've received leading up to this award has been incredible and we'd like to thank our dedicated team and all who voted from the bottom of our hearts."

Robert honoured at the Palace

The Ambler congratulates one of our former County Councillors, Robert Arckless on being awarded an MBE. (A member of the Most Excellent Order of the British Empire; an order of chivalry) rewarding, in Robert's case, contributions to public service. This was an extra special occasion as it was the centenary of its conception by King George V in 1917.

Robert heard he had been given the award in December 2016, but had to keep it quiet until the New Year's Honours List was officially published on December 30.

At that point his partner, Mike Brooks, posted the news on Facebook and the response was 'enormous.'

There were stacks of comments and one he particularly remembers was from Coral Turnbull, his history teacher from Amble Modern School, who said "This is a great achievement".

On his trip to London Robert said: "It was more practical to make a weekend of the outing." So they travelled by train on Thursday May 18.

Dame Vera Baird

That evening they enjoyed a party at Vera Baird's London home. Vera, Police and Crime Commissioner for Northumbria, and a longstanding friend, was to receive the most senior honour and become a Dame in recognition of her services to the cause of women and equality, at the same ceremony.

The investiture took place on the Friday amid tight security at the Palace: there were armed police and a bag search, as memories of the Westminster terror attack were still raw. Tributes to the victims were still apparent on Westminster Bridge.

On arrival at the palace they were ushered into the rehearsal room, divided into groups and the protocol was explained. On this occasion there were 94 people being honoured and Prince Charles was awarding the medals. Robert had chosen to use a wheelchair for the ceremony so he could feel relaxed during the proceedings, and not worry about his mobility. He was given his very own footman to push his chair. Robert says "Everyone was very helpful. It was a great experience, steeped in tradition. The procedure went like a well-oiled machine"

On entering the ceremony room Robert was impressed by the opulence, and the works of art on the walls, pictures that

aren't on view to the general public. "In one respect, it's surreal. It's steeped in tradition and as someone who loves history, I enjoyed all that. The chandelier was about as big as our bungalow!" Music was provided by the Countess of Wessex Orchestra, playing an arrangement of Coldplay's Viva La Vida.

Prince Charles was standing on a dais to make the presentation, but as Robert was in his wheelchair he stepped down to speak with him. They talked about the Prince's visit to Amble, which Charles remembered and they talked of the fishing fleet and lobsters. "It was an emotional experience, and I thought about my Mum, who would have been very proud."

The ceremony lasted about one and a half hours in all, and then there was time for the official photographs. Robert particularly values a photograph of himself and Vera with Gordon Adams, one of Vera's guests and former MEP for this region who is a mutual friend, with their guests. He is awaiting the arrival of a personalised DVD of the ceremony. He intends to put all the mementoes into an album as a souvenir of the occasion.

Saturday was a rest day, but on the Sunday they visited St. Paul's Cathedral. "The cathedral was amazing. It has a chapel dedicated to the Order of the British Empire in the crypt." Next was the National Portrait Gallery, in particular the Tudor Gallery. Robert said "I was familiar with many of the images, but to see them face to face was amazing." Here he could indulge his interest in art and history. Afterwards he was surprised to find no pigeons in Trafalgar Square.

Political career

Robert has many proud moments during his 34 years as councillor. In 1983, learning of his election, he called on Nellie Arkle to give her the good news. Nellie and Lena Gilgannon were among the many people who supported him in those early years. He was elected when only 25, one of the youngest councillors. He remembers his very first surgery,

meeting a lady who promptly burst into tears of frustration over her circumstances. "They don't give you a manual in this job, but I am pleased to say I was able to help her" he said.

He has always had a passion for education: he went to school in Amble



Receiving his MBE was an emotional moment

and as councillor has served as governor on several boards. He has had a close involvement with all our schools in his time.

Securing the future of Amble Library made him very proud. This was a protracted project lasting at least five years as he had to deal with the ever changing officers within the local authority, but his persistence paid off. "The fact that the library is now housed in the Mechanics Institute building carries on the tradition of learning in the town. It is true to the character of the building."

He was there at the setting up of the Shorebase Trust and is proud to say, "After all the trials and tribulations they are still flourishing and now in a smart new building."

He was involved with the refurbishment of the pier and the opening by Jackie Charlton, the town square and disabled access for Hauxley Village Hall.

Robert stood down for health reasons; his increasingly limited mobility meant he could not do the job the way he wanted to, "I don't want to become one of those people who stay too long," he said. He intends to do less and enjoy more leisure time, indulge his passion for history and books. "But you can't just switch off," he said "I'll be supporting Terry [Clark] where I can." He will continue his links with education as he continues to serve as governor on the board of Northumberland College, where he also studied. He may even try some distance learning, perhaps an MA.

In conclusion Robert said, "It was fantastic to be nominated. However I was only able to do all the things that I have done because I have been so lucky in the people that have worked with me. Politics is about people. It was a marvellous occasion and a great way to round off my official life."

We wish him luck in his new role and thank him for the many valuable contributions he has made to this community.

Vivienne Dalglish



With Dame Vera Baird, a longstanding friend

Sunderland schoolchildren bring friendship and funds to Amble based Chloe's Den

Children from a primary school in Sunderland were so moved by a story in *The Ambler* that they have raised £352.00 for a holiday home for profoundly disabled children holidaying in Amble.

In January a dream came true for children with complex disabilities when money was raised to purchase a brand new accessible caravan based at Park Leisure, Amble Links. The holiday home was named Chloe's Den, in memory of Chloe Gilbert, the 9 year old girl who inspired the fundraising venture by Out of Sight, a charity created by parents of children with serious visual impairments and multiple disabilities.

The Ambler was there on the opening day, reporting on the magical event and the resulting story caught the attention of Deputy Headmistress Jill Carroll, while visiting Amble. She re-told it to the children at Redby Academy in Fulwell, Sunderland, who were so moved by the story of Chloe and the Out of Sight

group that they decided they would like to raise funds for the ongoing upkeep of the holiday home.

Ten children from the school visited the caravan on Thursday 18 May to meet Kath Nixon, who led the fundraising drive for Chloe's Den, and a number of other volunteers, including Chloe's mother.

Jill said, "The children saved their 'Small Change Tuesday' contributions over a number of weeks. This is a small donation of loose change which they drop in the pot on their way into assembly every Tuesday. As well as this, an Easter raffle boosted the funds.

"We all found the caravan amazing and were struck by the difference this can make to children and their families. The group all enjoyed sitting in the fantastic sand buggy which enables disabled children to visit the beach.

"After the visit, which also included a picnic and an ice cream from the local parlour, one



Above: l-r Leonie King meets children from Redby Academy. Deputy Head Jill Carroll hands over a cheque to Kath Nixon from the Out of Sight charity which runs Chloe's Den.

child in the group remarked that it was one of the best days of her life".

Kath Nixon who led the fundraising drive for Chloe's Den, said "Out of Sight are very

touched by this donation. Thank you to Redby Primary Academy and to everyone involved. Their kindness is heart-warming."

See also Letters page on p6

Parents battle to save school from closure



Parents and children at Acklington First School

Parents at Acklington C of E First School are battling to keep their school open, after receiving notification from governors at James Calvert Spence College at the beginning of May that the village school may close in December. The first school in Acklington, which became part of the JCSC federation in 2015, currently has only 13 pupils.

Parent Steven Bush said "They told us the school will close in December. The parents

were shocked and angry. Since then we've been mobilising and we've got a facebook page."

The decision to launch a consultation was made by governors in January, but they were advised by Northumberland County Council to wait until May to announce the consultation. The reasons for this are unclear.

Stephen continued: "When a school is threatened with closure it's usually the school, parents and governors fighting together. We're just a bunch

of parents, we're fighting the governors themselves."

Stephen said, "The school has always been small and two years ago, JCSC offered to include us in the federation. It seemed the best option. The message we got was that the school was now safe and secure and this was a way to keep it in the black. We feel we've been somewhat misled."

JCSC's Governing Body explained their

reasoning in the consultation letter: 'In the light of falling numbers at the school, it is becoming increasingly difficult to provide the best educational experience for children at Acklington C of E First School. The Governing Body has therefore reluctantly concluded that it must consider the option of closing the school at the end of December 2017 and re-directing the pupils to other local schools.'

Parent Andrea Aikin had a message to other parents in the JCSC federation. "We would like to reassure any parents that attend the federation schools or any of the other local schools that we at Acklington are not a threat to your child's education.

"The reality is that in the long term your children may actually benefit from our school staying open. This is because our villages are growing at a rapid pace as there is planning permission being approved for lots of new houses in and around our local areas meaning our local schools will suffer from oversubscription. Therefore, Acklington C of E staying open will take the pressure off other local schools. So whether the closing of our school directly affects you or not, there will be no benefit in closing our school.

"Please support us in keeping the school open and fill out our consultation questionnaire."

The campaign has a facebook page: 'Save Our School Acklington C of E First School' where there is a link to their petition.

Anna Williams

Policing Matters: building links with local people

Welcome to my first article in The Ambler. My name is Ian Forster, I am a Neighbourhood Sergeant with 25 years policing experience and I have recently taken over responsibility for Amble, covering an area from Alnmouth, south to Cresswell, and west as far as Cambo.

Policing issues are broad and varied in such a diverse area. With the majority of the area being rural, we deal with incidents such as thefts and burglaries to farms and other rural premises. Poaching is a problem, people coming onto farm land usually with dogs to kill rabbits, hares and other wildlife. They cause damage by driving over crops and often use poaching as an excuse to check out the area looking for things to steal such as quads, power tools and diesel.

There has just been a police operation called Checkpoint involving some of my team and many other officers from all over Northumberland working with volunteers from the rural community. The operation went on through the night with the volunteers being extra eyes on the ground. Any suspicious vehicles that were seen that may have been out to commit crime or poaching offences were stopped by police.

We get regular reports of off road motor bikes and quads riding along the coast, which, again, causes damage and annoyance to the public and we have increased patrols in these areas.

One of my team works within HMP Northumberland to deal with crimes in the prison such as assaults or smuggling items into the prison, usually mobile phones and drugs. In addition I have 4 officers based at Morpeth who cover the rural area north and west of Morpeth, and 4 officers based at Fourways in Amble. All the officers are

experienced, professional and approachable, so feel free to speak to them when you see them.

Neighbourhood officers have other duties in addition to responding to incidents. We have responsibility for safeguarding victims of crime such as domestic violence, repeat victims of crime or anti-social behaviour (ASB, we like mnemonics in the police service!).

We work closely with other agencies such as the council, Social Services, Housing, Education and so on, to protect vulnerable members of the community by sharing information, taking actions against offenders and supporting victims.

Our priorities in Amble are to build links with local residents and businesses so that we know what your concerns are and to address them.

Crime will always be a priority and I want to also drive down any pockets of ASB and drug issues within the town. We will be working with licensees of pubs and off licences to reduce alcohol fuelled disorder and underage drinking. We will try to be as visible within the community as we can.

Above all I would like to ask for your help by telling us about any policing matters that concern you. If there is an address where there are lots of comings and goings all times of day or night, if you have information about someone you think is involved in crime or disorder or anyone you believe is vulnerable and in need of help, then please pass this information on to us. We can only act on the information we have. You can remain anonymous if you wish.

To pass intelligence about an address or a person you can e-mail morpeth.npt@northumbria.pnn.police.uk.



Sgt Foster outside the Police Office in Fourways2

To report an incident where you want police to speak to you or attend then ring 101. For emergencies or if a crime is happening now then dial 999.

Ian Forster, Neighbourhood Police Sergeant

Groundwater at Hauxley tested for high manganese levels

Claims by an Amble resident that groundwater on the beach and in the Low Hauxley allotments was showing high levels of manganese has prompted further water testing by the authorities.

A spokesperson for the Environment Agency told the Ambler they had now taken samples of the water in Hauxley allotments:

"The results show normal levels of manganese in the water. We've passed these results to Northumberland County Council as the lead authority.

"Regarding the upwelling of groundwater on the beach, as mentioned before, our assessment of the quantities of water show there is no cause for concern or risk to marine life. As



Fields at Low Hauxley have always been boggy, according to ex resident Rod Scott

a precaution we will begin testing bathing water samples taken from Amble Links, Hauxley and Druridge Bay for metal to monitor the situation."

Hauxley's flooding history

After our article in the last Ambler on concerns about poisoned water at Low Hauxley, we received a call from Amble resident Rod Scott, who had additional information on flooding in the area.

Rod told The Ambler that fields behind Low Hauxley had always been boggy, even from when he had lived in the village as a child. "It has always been marshland in the Hauxley fields, and the iron colour of the water is due to the peat bog," he said.

He described how a watercourse runs from fields north of Kirkwell Cottages, all the way to Hauxley Nature Reserve and into the lake. "The little stream runs from Kirkwell Cottages all the way to the lake," he said, "and if it gets blocked, that is why the road has flooded in recent years".

Anna Williams

WHAT YOU SAY...

An open letter regarding the cycle route

As addressed to Councillor Dargue

I have written to Amble Town Council twice before but without reply. Maybe this is third time lucky.

The supposition that a cycle contraflow is dangerous is wrong. Perhaps you are unaware of the Transport Research Laboratory findings that show properly designed contraflow schemes for cycles on one-way streets "function satisfactorily in a variety of conditions". In none of its studies had cyclists been put in a position of serious conflict, and the behaviour of cyclists was not judged to have endangered pedestrians.

Furthermore, EU guidance says contraflow "is a simple regulatory measure and highly attractive for cyclists. It creates shortcuts away from busier traffic. It has proven safe, even in the narrowest streets, when speeds are low and traffic quiet. Contraflow cycling should be generalised city-wide: this way, they become a normal situation for all and cyclists benefit most." They then go on to say that contraflowing cyclists are actually safer than those going with the flow of traffic.

If there is an issue on Leases Street the problem is with the road design, not with the route past the harbour.

The campaign to relocate the cycle

route is being driven by, what is effect, an unelected local quango. This body, appointed by your council, has no expertise in traffic management. Furthermore, it is not neutral in its stance and is going beyond its remit of looking into traffic issues; it is driving a biased campaign based on fake information and incorrect opinion. It is not consulting with the whole community. Instead, it stifles debate by producing a one-sided petition to mislead others to believe its own dubious views. It is also using anecdotal evidence and scaremongering to support its aims; "it's an accident waiting to happen." The council are accepting its view without scrutiny. That is not a transparent, democratic process.

Were comparative risk assessments by qualified traffic safety officers of the existing and alternative routes carried out? Nobody at the town meeting suggested that they have taken place. A proper assessment would include the speed of vehicles on the existing and alternative route from Church Street to Links Avenue, via the Fourways roundabout. Don't you think that the comparatively slower speed of most vehicles on Leases Street mean the risk to cyclists and pedestrians are reduced there? As both a driver and a cyclist, I do.

It is not only speed that kills. 75% of

all accidents to cyclists happen at junctions. RoSPA say "Roundabouts are particularly dangerous junctions for cyclists."

So, why are you proposing to impose extra speed, junctions and a dangerous roundabout that suffers regular vehicular damage onto all cyclists? Why are you planning to increase their risk?

The proposed change will also divert cyclists away from the harbour businesses.

There are always difficulties with cars, cyclists and pedestrians interacting on any road. A few cyclists ride dangerously and a few car drivers do the same – that is a matter for the police and the road designers. I agree that the current arrangements are not ideal; the design of the temporary one-way system was wholly inadequate. Although it is unpopular with some, I welcome the one-way system as I remember the regular gridlocks we used to have. I am pleased it is being made permanent and that proper signage and road markings are to be installed.

Please do not change the cycle route before that new, permanent scheme is in place with a properly designed contra-flow scheme tried and tested.

*Ivor Rackman
George St, Amble*

Thank you from Terry Clark

It is with a great sense of gratitude to all the people of Amble, Hauxley, and North Broomhill who voted for me in the County Council elections, this is a great honour and privilege, representing this great area we live in. Thank You.

I very much look forward hearing from you on important key issues that will affect us throughout our town and surrounding villages, I will continue to the best of my ability to be engaged, committed, and dedicated, building on our strength as a community.

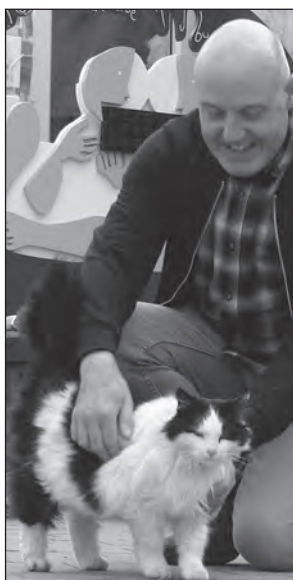
Congratulations to Robert Arckless on receiving his MBE, for the years of outstanding service and work he has done for our community at parish and county level, Robert leaves a proud legacy as a local servant. I wish him a long and happy retirement.

Thank you for support and encouragement and thank you for building a better Amble, Hauxley, and North Broomhill.

*Councillor Terry Clark, Amble
Terry.Clark@Northumberland.gov.uk
07779 983768.*

Poem: Oscar the Mystery Cat

Is he a vagabond without a home?
Cold lonely and a tendency to roam
Along the dock wall and stare out to sea
A sleep in the P-pod and a stroke from Ashley
And tourists walk by and like to look
They call him Oscar and put him on Facebook
But he has got a home and he has got a bed
He just loves to scrounge and he likes to be fed
He is no tramp, he's much more than that
He's beautiful sleek Oscar the mystery cat.



Mrs Porter, Liverpool

Sunderland children visit Chloe's Den

I brought a group of school children from Redby Academy in Sunderland to Amble to hand over a cheque for £352 to Chloe's Den on Amble Links Caravan Park.

The children saved their 'Small Change Tuesday' contributions over a number of weeks. This is a small donation of loose change which they drop in the pot on their way into assembly every Tuesday. As well as this, an Easter raffle boosted the funds.

Ten children from the school visited the caravan on Thursday 18 May to meet Kath and a number of other volunteers, including Chloe's Mam. Leonie was also there to meet the children. We all found the caravan amazing and were struck by the difference this can make to children and their families. The group all enjoyed sitting in the fantastic sand buggy which enables disabled children to visit the beach.

After the visit, which also included a picnic and an ice cream from the local parlour, one child in the group remarked that it was one of the best days of her life.

*Jill Carroll, Deputy Head,
Redby Academy, Sunderland*

See article on page 4

We welcome your letters, email, Facebook and Twitter comments for publication.

Your name and address must be supplied, but will be withheld on request. Letters/Facebook comments may be edited. Contact details on page 2.

'Elizabeth and Leonard's' official naming ceremony

On a beautiful afternoon, Saturday 27 May, a large crowd gathered to witness the naming of Amble's new Shannon Class lifeboat. Chairman of the Amble Station, John Young, welcomed the guests who included friends and family of the late Elizabeth and Leonard Brumfield. Ellington Colliery Band provided music for the occasion.

Dianne Loveridge, God daughter of Elizabeth Brumfield, then handed the lifeboat over to the RNLI. She said, "It was a privilege and a pleasure to be here on this occasion." She was proud of what Elizabeth and Leonard had achieved and said "Elizabeth would have been amazed and excited, by all that has happened."

Accepting the vessel on behalf of the RNLI, Robbie Warrington, Head of Lifesaving Support, commended all our lifeboat men to the assembly. He told us "The new craft had already been launched five times and will give vital service long into the future. It is hugely capable, it can go out in any weather, and looks after the crew better than the previous vessel." In years past, the lifeboat was crewed by local fishermen, now the volunteers come from all walks of life.

In accepting the boat on behalf of the Amble Station, John Wingfield, Lifeboat Operations Manager, thanked the family and friends of Elizabeth who had come along. He said he was grateful to the estate of Elizabeth Brumfield and all the fundraisers, including ALF (Amble Lifeboat Fundraisers), and local businesses and donors, who between them had raised, 'a



Above: Dianne Loveridge
Below: l-r John Young, Dr Paul Creighton, Mark Phillips and Rodney Burge. Photos Bart Rippon

phenomenal amount of money.' He promised the lifeboat would be well looked after.

The service of dedication was conducted by the Revd. Gillian Harwood, a former vicar of Amble. Dianne Loveridge, then formally named the lifeboat 'Elizabeth and Leonard.'

The crew then put her through her paces to show us what she was capable of. She is powered by jet propulsion enabling her to go forwards (ahead), backwards (astern) and even sideways, and she can turn in a complete circle in a very small space.

Closing the ceremony, Dr. Paul Creighton thanked everyone

who had made the day possible; the RNLI, the fundraisers, the crew and all those who support them onshore.

He made particular reference to Rodney Burge, who many years ago, when it looked like the RNLI might close our station, said to the visiting Admiral, "We was here afore ye!" making reference to the fact that as a coal port Amble had always supported its seamen and had a lifeboat before the RNLI was created. He firmly believes that if not for Rodney's intervention, this ceremony would not have been possible.

Vivienne Dalglish



Remembering Hector Handyside



Hector Handyside working on the coble 'Sweet Promise' in 2010 Photo by Yvonne Davies

John Hector Handyside known widely as 'Hector' to anyone who has even the slightest interest in inshore fishing boats and cobles in particular, passed away peacefully on 31 May aged 83.

From Berwick upon Tweed to the Humber, mention of his name would conjure up visions of skilfully built cobles with beautiful lines that were also superb sea boats. Hector was one of the very few great wooden boat builders on the North East and Yorkshire coast.

The boat yard of J&J Harrison started in Amble in 1870 mainly building collier brigs but by 1920 they were building numbers of cobles. Hector joined the firm in 1948 and in time became the master builder. Fishermen wanting to order a new coble would discuss their requirements with Hector, and without plans and just some basic overall

measurements, the requirement would be met from great skill and years of experience.

As well as new builds, Hector restored or rebuilt many cobles. Several of these stand out and are still around, including 'Sweet Promise' originally built in 1906 by William Cambridge. 'Sweet Promise' can be seen in the boat compound behind Broomhill Street. The 'Christina' built in 1972, the 'Gratitude' built in 1976, and the 'Madeleine Isabella' restored in the 1990's all took part in the Bridlington Sailing Coble Festival in 2016 and are all likely to attend this year, showing that the quality Hector built into his boats will see them last for a long time yet.

Colin Robson, Coble and Keelboat Society. More on our website, including a link to a short film on Hector, made by Yvonne Davies

Joan's 'perfect day' at

Joan Robinson a member of Warkworth and Amble District Royal British Legion attending the Queen's Garden Party at Buckingham Palace.

The branch secretary June Watson nominated Joan because through her community website www.warkworth.co.uk Joan has raised a substantial amount each year for the Royal British Legion Poppy Appeal. Joan was accompanied to the Palace by her son. Joan was really thrilled and honoured

Buckingham Palace

to be chosen and delighted when her son Jimmy could join her. "It was a wonderful bright sunny perfect day spent in beautiful surroundings, with delicious tea, delicate cucumber sandwiches and cakes," she said.

The Queen and most of her family were there amid the smart hats and outfits.

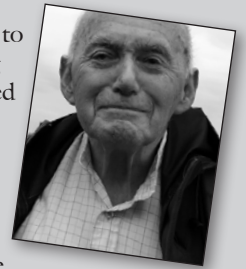
"It was a perfect day and so exciting especially being so close to the Queen."

Below: I-r Joan and her son Jim, HM The Queen, cucumber sandwiches. Photos by Joan Robinson



Age of insecurity

I've never tried to write anything where I've worked backwards in time. However this is a rewrite of an earlier column, completed before my recent trip to France. (More of that in the next edition).



The recent fire in the tower block in London calls for a rethink of many aspects of the situation. We all tend to have 20/20 vision in hindsight.

Our recent election was a humdinger. Accusations of Dementia Tax and Magic Money Trees are flying around. I reckon that our present parliamentary arithmetic could well lead to a Brexit of compromise and good sense. Perhaps that's what politics is all about.

My earlier column referred to Nicola Sturgeon and co, fundraising for the costs of a second Scottish referendum. It is interesting that they've stopped.

Michael Flynn and his threat to blow the gaff on US-Russia contacts is just one aspect of the political omnishambles which has engulfed the Trump presidency. Rex Tillerson, the US Secretary of State is charged with being a friend of President Putin. The feeling is that the wonderful checks and balances and layers of lawyers so beloved by our Transatlantic Cousins will run and run.

Nearer home, Facebook may be used by Ofsted inspectors to assess things going on in schools. Could the same device be used to assess the true worth of Ofsted inspectors? Still on education, the Supreme Court ruling on holidaymaking in term time is bound to raise hackles.

How about the recently discovered version of a worm eating mushroom? Small worm, large mushroom. (*Found in sand dunes apparently! - Ed*). A senior medical man has talked about the way to cure the scourge of type 2 diabetes. The answer is to eat less and exercise more. I hate to say "I told you so," but that's what I've been doing all my life. The overall effect has been to have a generally healthy body, and mental processes that have clearly led to my Cultivated Eccentricity.

Finally, we must all calm down and face the world as it is, and not as we'd like it to be. We used to be a nation known for its resilience. Let's all do some thinking. I'm absolutely sure we'll all come to the same conclusion. People do best when they work together.

Harry McQuillen

George's trip to the Spitfire Café



One-time Amble resident George Skipper, D Day Veteran, recipient of the Légion d'honneur and Chelsea Pensioner has sent the Warkworth & Amble District Royal British Legion branch secretary June Watson an account of his recent fundraising trip to the Spitfire Café in Biggin Hill, Kent.

He was taken with three other pensioners by The London Taxis Benevolent Fund members to judge a school Poppy competition. The children had either written a story, a poem, or drawn a picture about their great grandparents.

The Chelsea Pensioners happily judged the winners. The event raised £1,000 for the Poppy Appeal and the RAF Chapel Museum Trust with an auction and raffle.

George at 94 shows no sign of slowing down having just returned from another tour of the Normandy battlefields. He sends his greetings from London to all his friends in Amble and fellow members of the Warkworth & Amble District Royal British Legion.

June Watson Branch Secretary, Amble & Warkworth British Legion

Doctor leaves after 23 years



Professor Scott Wilkes has left his position at Coquet Medical group after 23 years.

In a resignation letter to patients, he says: "It's with regret that I inform you of my resignation from Coquet Medical Group. It has been a very difficult decision.

"I have been given a wonderful opportunity to lead a bid to host a new medical school in the North East of England at Sunderland University. Although an uncertain and challenging task it does need my full

attention. This will require me to work on the project four days per week hence reducing my time in the practice. This would leave me unable to discharge my partnership responsibilities on one day each week at Coquet Medical Group.

"It has been a pleasure to serve you over the past 23 years, I will cherish my memories of the time I had at Coquet Medical Group, will miss you all dearly and wish you well for the future.

Professor Wilkes, a partner at Coquet Medical Group was a part-time GP and Professor of General Practice and Primary Care at Sunderland University.

Coquet Medical Practice is currently recruiting for a new doctor.

Local tattooists raise £800 for victims of Manchester bombing

An Amble tattoo parlour decided to help victims of the Manchester bomb attack, by donating all profits from the famous bee design, to charity.

The generous gesture took place at the beginning of June, when Mark Gray and Martin Brooks from Grayscale Tattoo Studio on Wellwood Street, offered customers a tattoo of the Manchester bee for £40. The charity tattoo offer took place on 8 June, and all profits will be donated to the Manchester Tattoo Appeal, which was set up in the aftermath of the bomb attack in May.

The Manchester Tattoo crowdfunded campaign has so far raised almost £345,000 and was set up to help the families and victims of the terror attack at the Manchester Arena.

You can also donate directly here: www.justgiving.com/crowdfunding/manchestertattooappeal

After the event, the tattoo studio, which stayed open late for all the customers, posted a thank you on their Facebook page.

"Thanks so much guys we have raised £710 today. It was a pleasure meeting you all and thanks to the people who came and got tattooed by us. Thanks to Jordan who volunteered to help us out today you've done a great job. It's been fun. Thanks again"

The final total raised was £800.

Mark Gray told The Ambler: "I feel like we all need to do our bit and stand together united. Any help the victims need should be provided."



Co-op Funeralcare

Our caring staff are here to listen and advise you, 24 hours a day, 7 days a week



Coquetdale Cottage, Queen Street, Amble
Tel: 01665 710437

The 'P' Pod



Perfect for presents!

Carvings, home decor, fashion

Pod 6, Amble Harbour Village

Tues - Fri: 11am - 3pm

Sat & Sun: 10am - 4pm

Closed Mondays (except holidays)

www.theppod.co.uk

Life at the Harbour Village

The P Pod was the first business to sign up in the Harbour village and the first Pod to open. Now looking forward to their third summer, owners Paul Rigby and Ashley Sim still love the atmosphere in Amble's popular new shopping village.

"Having been there from the beginning, it has been interesting watching the Harbour Village's progress, and seeing it evolve into an attraction popular with local shoppers and visiting tourists alike," said Paul.

"It's just lovely down here, we have built friendships with the other Pod owners, and it doesn't feel like work - being in the lovely harbour surroundings, looking out at the sea, and hopefully enjoying some fair weather and the crack with the other Poddies."

People seem to like the the variety of the

individual shops on offer at the Harbour village and The P Pod itself encompasses the term variety. They have on offer a selection of art and canvases, ornaments and home decor items, as well as handbags and scarves. In their outside space, they sell their ever popular woodcarvings and skull and cross bones. People take these items all over the country and just recently one knowingly went as far as Australia.

Paul and Ashley of the P Pod are always happy to welcome customers old and new, and look forward to seeing you soon at the Amble Harbour Village.



Pod 2
Amble
Harbour
Village

Cosmetics, Skincare, Bath & Body and Accessories

Book a Nail Appointment now by popping in the pod, sending us a Facebook message or texting 07464269245

Facebook | Twitter | Instagram

www.coquetcosmetics-uk.com



Seafood Centre changes

One of the changes in the Seafood Centre with the arrival of the hatchery is the upgrade and relocation of the fish counter. Creel Fish has received loads of positive feedback with our fishmongers Lee (pictured left) and Sasha keen to welcome customers old and new.

Whether it be a familiar haddock, a well filleted lemon sole or a turbot as a treat they look forward to meeting your needs. Of particular interest to customers is our lobsterpod storage system which means we can keep live crab and lobster in tip top condition ready to be picked up at any time.

Andrew Gooding, Lobster Hatchery Manager



C R E E L F I S H

For a fantastic selection of fresh fish, smoked fish and quality seafood


Open 7 days 10am-4pm

Live crab and lobster always available in our special storage tanks

Filleting done to your specification

Creel Fish Club boxes available at sites throughout the County - see website

Creel Fish, The Seafood Centre, Leazes St, Amble, NE65 0FD 01665 713580

www.creelfishclub.co.uk  [creelfishclub/](https://www.facebook.com/creelfishclub/)  [@creelfishclub](https://twitter.com/creelfishclub)

- Handmade single origin chocolate
- Luxury iced milkshakes



NEW!
Mail order
coffee beans
and chocolate
**'Roasted
& Posted'**

Seriously good coffee.

Speciality coffee beans roasted daily on site.

Pod 15 Amble Harbour Village

www.mochamondo.com mochamondo@gmail.com

The Boat Shed Gallery

Pod 4, Amble Harbour Village

Original paintings and
prints from the coastline of
Northumberland.
Delightful cards and gifts.

edie pebble

Pod 14 Amble Harbour Village

Beautiful, handmade
gifts and vintage
treasures.



cottages in NORTHUMBERLAND



Looking to earn extra income from your holiday cottage?

Due to an increase in demand, we are looking for properties in your area that we can market on your behalf.

We can offer you:

- * Competitive commission rates
- * Full management service
- * Professional photography
- * 24/7 booking service

For a friendly chat call us on: 0191 231 3020

or email: enquiries@cottagesinnorthumberland.co.uk

www.cottagesinnorthumberland.co.uk

A lovely Coastal Jewellery Studio
at Amble Harbour Shopping Village,

Nautical and
Sea-themed
designs
available in

- Earrings,
- Necklaces,
- Charm Bracelets and
- Rings



A stunning range
of Sea Glass
pieces,
all set in
Sterling Silver

Open 7 days a week
Monday - Sunday
11 - 3pm

Beautiful natural semi-precious gemstones

[seawavesstudio](https://www.facebook.com/seawavesstudio)

Pod 3, Amble Harbour Village

www.seawavesstudio.co.uk

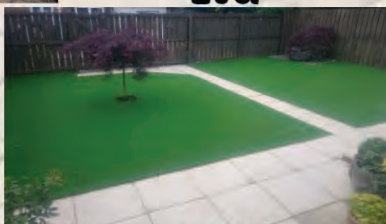
Brierley's Ground Force Ltd



Find us on:
facebook

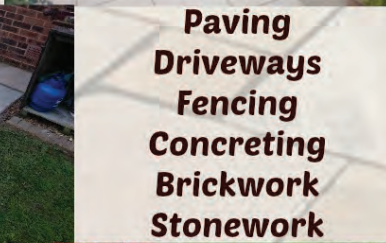
Paving and Landscape
Gardening Services

Free Quotes



Paving
Driveways
Fencing
Concreting
Brickwork
Stonework

Turf Laying
Artificial Grass
Drainage
Digger work



07851141492

Brierleysgroundforce@hotmail.com

Brierleysgroundforce.com

Cromie Pharmacy



We now offer a
FREE DELIVERY SERVICE

We can deliver your
prescription to any of the
following areas:

- Amble
- Warkworth
- Hauxley
- Acklington
- Chevington
- Broomhill/Hadston/Red Row
- Lesbury
- Alnmouth

Ask Staff for Details

158 Percy St, Amble 01665 710 896

WHY I LOVE FC AMBLE JUNIORS

My football team is FC Amble Juniors. It is really good because we get to go to the welfare, Newcastle, Morpeth, Bedlington, Ashington and other places. I like to play upfront, but I play right wing.

Last season was really good but this season was bad and we hope for the best next season.

If anyone wants to join, all you have to do is come to the training sessions every week and hopefully you will get the kit and start playing the games. My team members are Joey, Aaron, Alex, Ethan, Jake, Harry A, Harry M, Con, Ollie

In my life I hope I can be like Ronaldo because he is a really good footballer.
By Ethan



WHY WE NEED DEFIBRILLATORS

A defibrillator is device that gives a high energy electric shock to the heart through the chest wall to someone who is in a cardiac arrest.

This high energy shock is called de-fibrillation and it's an essential living saving step in the chain of survival. If you see this happening you must call 999 and start CPR.

There are many defibrillators available in public areas such as train stations, shopping centres, airports and leisure centre. You shouldn't be afraid of using these devices.
By Chloe Wilkinson



Should we have gender free toilets in schools?

Today schools have different toilets for girls and boys but there is a lot of talk these days about schools providing gender neutral toilets.

In other words, toilets that everyone can use.

The reasons why there should be gender neutral toilets is because if someone was transgender (they feel that they are born in the wrong body) they wouldn't have to feel uncomfortable or singled out from other people as they use the same toilets.

However some people prefer separate

toilets for boys and girls because they would feel more comfortable being private as they have periods.

On the other hand boys need their private space because they use urinals, which is open for all to see, which may make them uncomfortable if a girl happened to walk in.

Overall we at Artograffi think that girls and boys should have separate toilets, however there should also be a neutral toilet for transgender students or disabled people.

By Lillie P



Binky makes a new friend

Binky and Bazzle were playing in the bamboo forest when they spotted the moving van and the young panda stepping out of it with his parents. Immediately as he spotted the pair, the strange new panda waved at them and began to walk over.

"Come on! He must be new. We'll make friends and, you know, show him around." Bazzle suggested, already walking over to him. Binky shrugged and followed.

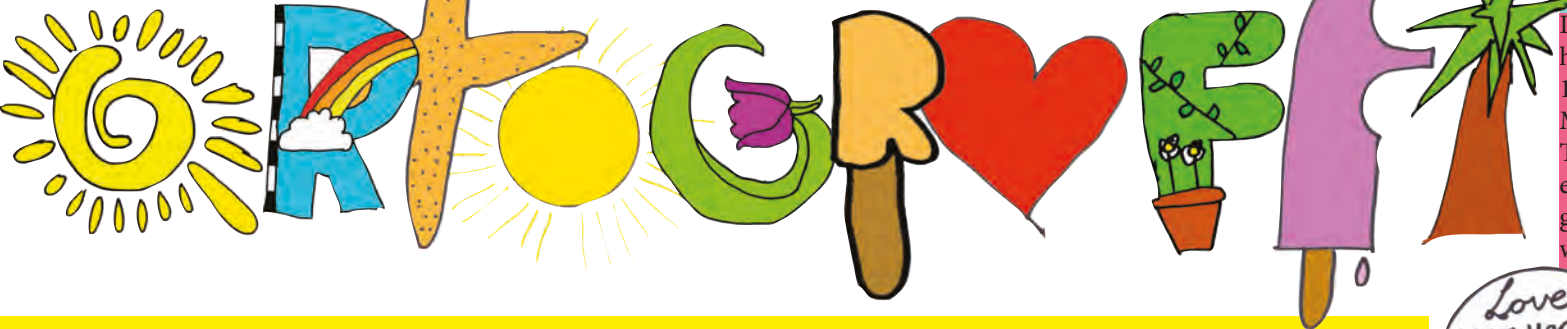
The new panda introduced himself as Bryaxis and spent the rest of the day playing around with them. The next day Binky waited for Bazzle to come get

him to play out for the day, but even after half an hour he hadn't come. Eventually he got bored and went out to see if he was still asleep, a likely explanation knowing Bazzle. But as he got to the edge of the bamboo forest he could see Bazzle and Bryaxis

playing catch together, without him. When Bazzle saw him he flinched a little bit.

"Sorry! I completely forgot to come get you!" he said, which pretty much summed up the whole day. Binky was forgotten. He went home and told his mum who told him he should tell Bazzle he felt left out.

"I'm sure he doesn't even realise he's leaving you out."



The meaning of life

Lots of people have theories about life. Here is one of my theories that is quite cool; we all live in a video game.

This sounds weird but it could be possible, out there is what to us would be giants but to them they are simply normal.

They are playing a video game a bit like Sims and we are their characters.

For example if you cook something that is simply them telling you to do that action, and when you say something they have told you to say that.

Another theory about the afterlife is that we all get reincarnated. This isn't completely my idea but I think that when we die we are reincarnated as a different animal. Depending on if you were good or not depends on the animal; if you were bad

you become a 'lesser' animal such as a bug. However if you were good you will become a better animal such as a lion or whale.

By Ava

It's Not Funny to Test on a Bunny!

Animal testing is where live animals are used for experiments or something similar which will cause them pain or long lasting damage, most of them are killed at the end. This isn't like the vets and it definitely isn't for the animal's own good, this is deliberately to cause the animals harm.

The experiments can include injecting or force feeding animals with potentially harmful substances, exposing animals to radiation, surgically removing animal's organs or tissues to deliberately cause damage, forcing animals to inhale toxic gases and subjecting animals to frightening situations to create anxiety and depression.

Animals from birds to monkeys

to bunnies are used in these experiments that are often to test make up. Do we need to sacrifice 100 million animals each year for our beauty products? They are innocent. All of those dogs, cats, mice and all the rest of them could have had a happy life.

Something needs to be done to stop it; these animals are living in tiny cages with sterile conditions, sometimes all alone. They have no freedom or control over their life, they can only wait for the next experiment and eventually their death, but there are ways that we can help.

Always buy cruelty free products, so many products test on animals such as L'Oreal, Avon, TRESemme, Dove, Aquafresh, Arm and Hammer and

many more but there are still many who don't.

You can make a really big difference by using products that don't test on animals. Donating your body to science when you die can also help as this means it can be used to test these products on instead of using animals.

You can also help raise awareness by telling your friends, family and everyone else or make a donation to a website against animal testing.

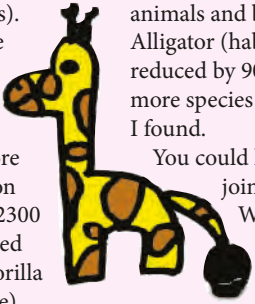
Whatever you do it will help, and we need all the help we can get to stop this awful happening. What happened to 'treat others as you wish to be treated'?

By Lily T

What can we do to help endangered animals?

There are lots of endangered species, some well-known and some not known at all. A well-known one in Amble is a puffin. 10 popular endangered species are: 1) Tiger(less than 3200 left in the wild). 2) Polar bears (due to habitat loss). 3) Pacific walrus(climate change), 4) Magellanic penguins(no fish for food). 5) Leatherback turtle (been alive for more than one hundred million years but now less than 2300 live). 6) Bluefin tuna(used in sushi), 7)mountain gorilla (approximately 720 alive) 8)Javan rhinoceros (less than 60). 9) Giant panda (1600 in the wild) and 10) Blue throated macaw (350-400 left).

By Lily T



Some non-well-known endangered animals are; Gharial (like a crocodile/alligator), Roloway Monkey (in Africa), Axolotl (also known as a Mexican salamander), American Burying Beetle (feeds on the flesh of small animals and birds), and Chinese Alligator (habitat has been reduced by 90%). There are lots more species but these are a few I found.

You could help the animals by joining a charity such as World Wildlife Fund. I think the animals need to be better cared for and need better enforced laws to have helping them.
By Ava

#TheWattys2k17

Wattpad holds several smaller contests a year and one major one. The largest is the annual Watty Awards. The second largest is Just Write It. In 2011, The Watty Awards introduced three entry levels (Popular, On The Rise, and Undiscovered) to allow greater chances of winning for every type of writer. Contests are open to anyone who has a Wattpad account (go to <https://www.wattpad.com> to sign up).

During the summer of 2012, Wattpad, in collaboration with Margaret Atwood, Canadian poet/novelist/literary critic, held the "Wattys": the first major poetry contest offering a chance for poets on Wattpad to compete against each other in one of two categories, either as an "Enthusiast" or a "Competitor". It has been going ever since.

One of the winners of the 2016 Watty Awards, which I am very excited to read, is 'The Otherworlders – Featured Story' by user 'paulapdx' (IF YOU JOIN WATTPAD, FOLLOW ME AT @Supernaturalaholic12)
By George-Anne Carnegie

ATTACK AT ARIANA'S CONCERT

In the middle of May a 22 year old man called Salman Abedi blew himself up with a suicide bomb and killed 22 people and injured 116. The bomber attacked people at Ariana Grande's concert in Manchester. This attack affected young teenagers and adults. The youngest person who was killed was Saffie Rose Roussos an eight year old girl. Her teacher said she was, "simply a beautiful little girl in every sense of the word. She was loved by everyone and her warmth and kindness will be remembered fondly."

Ariana Grande tweeted "broken from the bottom of my heart, I'm so sorry I have no words"
By Chloe Wilkinson

ONE LOVE CONCERT



This concert was organised in honour of the lives lost and affected two weeks earlier by the Manchester bombing at Ariana's Dangerous Woman concert. Ariana did an amazing job, especially after the shock that came with the horrible event.

Many artists took part in the One Love concert, such as Little Mix, Justin Bieber, Niall Horan, Miley Cyrus and many others who performed amazingly and some gave speeches showing their respect to the 22 killed. The 50,000-capacity venue sold

out within 20 minutes. Approximately 14,000 people who attended the original Ariana Grande concert were eligible for free tickets for the One Love Manchester concert. BBC IPlayer registered more than one million live-stream requests.

£10 million was raised to be put towards the funerals of the lives lost. A total of 50,000 people attended to show their respect and enjoy the night. The concert will forever be a night to remember.

By Bethany

THE LGBT COMMUNITY AND STRESS

LGBT- dictionary definition: Adjective: Relating to lesbians, gays, bisexuals, and transgender people.

The national day against homophobia and transphobia is May 17th, and LGBTQ+ people go to meets. There is a gay church in Newcastle called the MSS.

The problem is that a lot of people are still homophobic and carry out acts of hate. For example there was a shooting at a LGBTQ+ bar in

Orlando, Florida in June 2016.

Homophobia can sometimes lead to depression and stress brought on to members of the community.

Same sex marriage is only legal in certain parts of the world and even in some parts of the UK. Some countries dislike the idea of same sex relationships to the point that they make it illegal for them to live in the country.
By Emma-Jane Gregory

Arch

Changing the face of Northumberland

- investing in residential and commercial property
- building new homes for sale and rent
- developing high quality industrial and commercial workspace
- implementing major projects across Northumberland
- attracting investment and promoting business growth

www.archnorthumberland.co.uk





Hauxley Parish Council

Planning issues

The last County Council meeting agreed that the draft Northumberland Core Strategy should go to the Secretary of State for public examination before the final stage of adoption, by the end of the year. Northumberland has not had a strategic, county wide, planning framework since 2009. Government removed the regional strategy. They also introduced a "presumption in favour of development" and have aspirations to build 1 million homes across England by 2020. All of this, and the recovery of the housing market, means Amble is at the centre of several market driven proposals for new development.

Proposed Housing Development

Representatives from Cheviot Holdings Ltd. and Barton Willmore attended the Parish Council meeting on Monday 13th March 2017. They gave a presentation on the proposed development on land adjacent to Percy Drive. Approximately 125 of the 275 houses will fall within the Hauxley Parish. During the question and answer session residents and councillors expressed concerns around the environment, flooding, the impact on local infrastructure, increased traffic and blurring the parish boundary with Amble. Hauxley Parish Council requested open dialogue throughout the whole process and to be consulted on all matters.

Election of Chairman for 2017/18

At the meeting on 8 May 2017 Councillor Rita Callendar was elected as Chair of Hauxley Parish Council and Councillor Ken Graham as Vice Chair. There are 2 vacancies on Hauxley Parish Council.

Parking

Residents and members of Hauxley Parish Council have requested all residents and members of the public to adhere to the parking restrictions to alleviate the issues with car parking and access.

Flooding issues

The drain that previously flooded has been cleared and now operates well. The pipe outfall on to the beach has now had a non-return flap fitted that should prevent sand and other debris from entering and blocking the pipe. However, the water table in the Parish still remains high and Hauxley Parish Council will continue to monitor the situation. Northumberland Day took place on 28 May 2017 and was the first of what is hoped to be an annual event. We would welcome any suggestions from residents in the Parish.

Thank you to Robert Arkless

Hauxley Parish Council would like to thank Councillor Robert Arkless for his work and dedication over the years. It has been much appreciated and we all wish him the very best in this new chapter.

Next Meeting :The next meeting of the Parish Council is 6.30pm on Monday 10 July in the Village Hall, Low Hauxley.

Residents are invited to write to the Clerk, Vicki Smith, if they wish to raise any issues at the bi-monthly parish meetings.

Parish Clerk: Vicki Smith 11 Acklington Road,
Amble, NE65 0NF Tel: 07875445495

Email: Hauxleypc@hotmail.co.uk

www.theambler.co.uk/category/news/politics/hauxley-parish-council



Local handyman goes greener

As the government ponders how to deal with the diesel vehicle dilemma in order to meet their clean air requirements, one local tradesman is leading the way, having made the switch to an electric vehicle.

Dave has taken his environmental responsibilities seriously by opting for his work van to be 100% electric with zero emissions. The Nissan e-NV200 also has much lower running costs and is made in the North East, so it all makes perfect sense.

On a full battery the van has a range of 60 miles, and having solar panels and a charge point at home makes charging simple.

Dave said "Now we just need a public charging point in Amble to encourage others to make the switch".

A spokesperson for NCC said: "The County Council wishes to encourage electric vehicles and successfully applied for Government grant funding in 2014 to increase the number of charging points across the county. At that time, the possibility of providing a charging point in Amble was considered. However, there are few off-street car parking spaces owned by the County Council in Amble. Discussions were held with the Harbour Commissioners over providing a charging point in their car parks but, unfortunately, agreement could not be reached.

"We are aware of the increasing demand for a charging point in Amble so we are actively investigating other potential sites that could be implemented if funding becomes available".

Arch operates 'business as usual'

Arch, the Northumberland Development Company, is continuing to deliver business as usual across the county.

Although there has been speculation about the future of Arch as a result of the change in leadership at Northumberland County Council, Arch and the new council leadership team have agreed to continue its core business operations and the situation is very much "business as usual". This means that Arch will continue to deliver its services while the new administration carries out a strategic review of the company and its developments in partnership with the Arch Board and management team.

All existing tenancies for residents and businesses in Arch homes and business premises will continue unaffected. All repairs, maintenance and customer service will continue to be a priority, with no interruption in service provision.

Ascent Homes, the house building arm of Arch, will continue to build and sell quality homes and provide customer care and service for purchasers. Ascent Homes is currently selling homes on its

sites around Northumberland.

Arch will also continue to provide business support services for business based in Northumberland and to attract new private investment into the County.

All of Arch's current on-site developments will proceed as planned, other than the construction of the new County Council Headquarters. Options will be considered to bring redevelopment to Ashington town centre.

Jacqui Kell, Chief Executive of Arch said: "We are aware there has been uncertainty about our operations over the last few weeks. We are currently working closely with the new administration to help carry out a strategic review. Our focus remains on providing homes, supporting business and jobs and encouraging regeneration for the communities of Northumberland".

At time of going to print, The Ambler was unable to get any confirmation from Arch that the Amble hotel, Braid Hill car park and Industrial Estate housing projects will still be going ahead.

We will continue to ask! - Ed

Welcome back to Trust Life, which has quietened down after the Puffin Festival!

Everyone involved puts a lot of effort into making town events happen, from the organising, fund raising and actually making them come to fruition, so we hope you enjoyed it and found something to participate in.

Always looking for ideas to freshen events up we would appreciate feedback or suggestions of something different to include or even better, people to take part and help. The more willing hands the easier it gets.

Lobster Hatchery

At the lobster hatchery our first batch of babies arrived... in their hundreds!

Prior to the arrival of the expectant mothers to the maternity ward (I kid you not), staff undertook training in the processes that need to be carried out daily for water quality, acidity etc, plus all the data that needs to be recorded to show we are looking after the mothers and babies correctly.

Opening the hatchery doors to the public for the first time at Easter, we were extremely

pleased by the public reaction and interest in the purpose behind the project.

While it is currently free to enter there will be a charge once the full design and information boards are complete.

We believe the pricing policy to be sensible and tickets purchased will be valid for more than one visit. Unfortunately charging is necessary to cover the running costs incurred by the operation.

After the local elections

Following on from the local elections and the change in administration, we await information about how plans for the industrial estate might change.

At the moment we understand that the hotel build will proceed, but the housing might not. Another concern is the proposed town centre car park. However we are assured this has been highlighted as a priority by our local councillor, who has backed the plan.

Fingers crossed both go ahead.

Welfare update

Electrical and plumbing work complete,

plastering to be done to ceilings and some walls before painting can happen.

We had hoped that the pitches would be ready for the start of the new season but have taken advice that the ground is still settling and will need further rolling to ensure they are compacted.

Further work had to be carried out to the electricity meter box which was damaged by having the door wrenched off.

Why anyone would bother is a mystery, there is nothing inside other than a meter so can only assume the act was pure vandalism. So thank you to those involved, that is money well wasted!

Garden Party

On a more positive note, we were asked to nominate local people who volunteer in the community to attend the Duchesses Garden Party. To those lucky enough to attend, we hope you enjoyed it and thank you for all you do for the town.

That's about all for now

Julia and Trust staff

julia@ambledevelopmenttrust.org.uk

Puffin festival poster winners



Above: Amble First School (Edwin St) winners: Jude (Reception), Ebony R (Yr1), Lexi C (Yr2), William O (Yr 3), Pravhdeep (Yr4) Right: Emelia (Nursery)

Below: Amble Links School winners:

Scarlett (Reception), Daisy (Yr 1), Millie (Yr 2), Harley (Yr 3), Lola (Yr 4).



Improved safety on roads near schools

Northumberland County Council has been utilising their parking enforcement vehicle to help improve road safety outside schools in Northumberland.

The parking enforcement vehicle is equipped with a camera and monitors parking on 'School Keep Clear' restrictions, and was introduced in response to concerns raised regarding dangerous parking outside of school grounds.

The council received complaints relating to inconsiderate parking, child safety and speeding outside of schools, and by working with parents, schools and local residents, the enforcement vehicle was introduced to monitor the traffic to ensure child safety.

The parking enforcement vehicle is highly visible and therefore helps to reinforce this good behaviour, and if the enforcement vehicle captures anyone parking on the 'School Keep Clear' restricted areas, then the owner of the vehicle will be issued a Penalty Charge Notice by post.

Paul Jones, Director for Local Services and Housing Delivery at Northumberland County Council said: "We are constantly working to improve road safety especially around schools and whilst the majority of people act responsibly, there are a minority of drivers whose actions create an increased road safety risk.

"The introduction of the enforcement vehicle has resulted in positive improvements in road safety, with many schools noticing a direct impact as a result of the enforcement vehicle routinely visiting their area."

Iona Skye tops graduate fashion show

A local fashion design student has been selected to feature in a graduate show, and is now hoping for a future in the industry.

Iona Skye Buddle, who lived in Amble before going to university, was one of six students whose work was selected for the recent graduate fashion week, and her designs can be seen on Vogue's website.

She went to Newcastle College to study Art and Design and then Nottingham Trent University where she studied for a BA in Fashion Knitwear Design. As part of her year's placement, Iona Skye worked for Hugo Boss in Switzerland

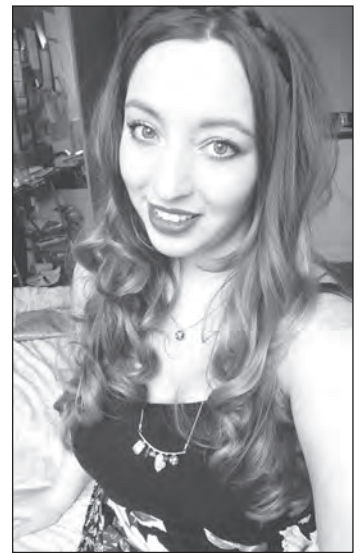
as a knitwear developer. Her collection was sponsored by international yarn manufacturer UPW, who are based in Hong Kong.

Iona Skye described how growing up close to the sea has influenced her work: "I have grown up in a coastal village in Northumberland; I have always been inspired by the ocean and I am passionate about sustainability and ethical fashion and it felt important to me as I was creating my collection, to have links with my coastal roots.

I wanted to use materials that would highlight ocean pollution and how it is affecting our textile material source and marine life.

Using Monofilament within my collection has been important to me, as it is a single fibre of plastic, widely used as fishing line. Monofilament knitted creates a high strength, flexible and fine transparent fabric that has created such unique garments within my collection."

Iona Skye told The Ambler: "Since the show, I have had lots of interest from brands like GAP In New York, Next and a few suppliers in Manchester/London. So I am just seeing where the opportunities take me then maybe in the future start my own label but for now I'm happy just exploring all of the opportunities that come my way!"



Above: Iona Skye Buddle
Below: On the catwalk, models show some of her collection.



Photo by Samantha Orton



Northumberlandia speaks out against coal mine

To mark the start of a public inquiry into the controversial Druridge Bay coal mine, a group calling themselves "Northumberlandia Speaks" used the power of art to give voice to Northumberland, a much-loved public sculpture in rural Northumberland. The structure, also known as Slag Alice, was constructed by the Banks Group to compensate for the environmental damage caused by the adjoining Shotton Surface Mine.

The mining company's plans to mine coal near local beauty spot Druridge Bay have attracted widespread opposition, and today's action vocalised that opposition. Much of this opposition has centred on the Save Druridge campaign, which

has funded legal opposition to the mine. The campaigners used a banner reading "end coal now" to suggest the views of the reclining woman depicted in the sculpture. They also constructed an image of a wind turbine in her clenched right hand.



Rob Noyes, a spokesperson for the group, explained: "Northumberlandia is sold as 'a

landscape for the community to enjoy' and yet the Banks Group wants to deprive the Druridge Bay community of the landscape they already enjoy."

As well as the dangerous environmental impacts of a coal mine near Druridge Bay, campaigners and local residents are concerned about the threat to wildlife and the local tourism industry, which relies on Druridge Bay's status as a natural beauty spot.

Although the Banks Group claims the new mine could create 50 jobs, it is unclear what would happen to these after the mine's five-year lifespan.

Jack Marley, a local resident

who participated in the protest, said: "I didn't actually know there was a new coal mine planned until recently. I don't understand why anyone would want to open a new coal mine when it's so obviously a declining industry. It makes much more sense to create local jobs in the renewable sector."

Noyes added: "While we await the results of the inquiry, we can only reflect on what a beautiful place Northumberland is, at sites like this. Anyone who comes to the area can see how a new mine would completely destroy the bay, and why? So a dying industry can wreck our climate."

A final decision from the inquiry will be reached in the autumn

REPORTS FROM OUR

County Councillors

I will start by saying how much I appreciate those of you who voted for me in the recent local elections. I will continue to do the best I can for Amble and will always try to represent all of the views of the residents of our Town.

The new administration will bring many changes to the council and will take some time to settle down but I can confirm the move of County Hall to a site in Ashington has been stopped and County Hall will remain at its present site in Morpeth. Many other parts of the Council are being examined and I am sure that soon you will see the evidence of a review and new ideas to make our town and county a better place to live in.

I am still opposing the building of new homes on the industrial estate and have expressed my views to the new administration as forcibly as I could. I await the outcome.

A new structure of five area committees with real power over planning and highways issues as well as local improvement budgets is in the process of being set up and the first meetings are planned to be held later this month. Amble will be in the Northern Area.

Changing times bring changing solutions to local issues but I think we will see positive benefits for our area in the forthcoming weeks and months ahead.

I am available on
Jeffrey.watson@northumberland.gov.uk
07802385367

Thanks again for your support
Jeff Watson

My first month as a County Councillor has been very interesting and busy, getting into my role, learning the ropes, and attending training sessions and seminars at County Hall.

Of course I've been attending committee meetings and full council meetings in County Hall, playing my vital role in local democracy, serving the people of Amble.

Labour may have lost control of council but I still have pride in what was achieved in the last four years at local level.

We may have challenging times ahead in which I will engage at every level from parish, and town, to County Hall representing and serving the people of this great area we live in, to the best of my ability.

This is a great honour and privilege to be elected to carry on Robert's fantastic work serving our community.

In July and August I will arrange my first drop-in sessions: in Amble library, Hauxley village hall, Broomhill Christ Church. I will let you know dates as arrangements are made.

We have much to achieve when we work together. Please don't hesitate to get in touch.

Thank you
Cllr Terry Clark
Terry.Clark@northumberland.gov.uk
07779 983768.

Intrepid local vet on African adventure!

Local vet, Stuart Morris, (pictured right) has recently returned from volunteering for an animal welfare charity in Botswana.

Stuart, whose wife is from Amble, was working in the town of Maun in the north of the country. Maun is the 'gateway' to an area called the Okavango Delta, a UNESCO world heritage site and one of the richest places to view wildlife in the whole of Africa.

The charity, Maun Animal Welfare Society (MAWS), provides veterinary treatment for domestic dogs and cats. Stuart was giving emergency care for sick and injured animals in addition to working in a neutering and vaccination clinic.

The vital work of this charity has two important benefits. The vaccination of domestic pets against infectious diseases

such as Rabies and Distemper keeps the pet population healthier.

Secondly, these infectious diseases have ravaged wildlife in other parts of Africa, affecting not only endangered African wild dogs but also big cats like lions and leopards. Vaccination and control of domestic dog numbers is helping to protect the beautiful wildlife from these diseases.

Stuart said, "the trip has been inspiring and invigorating; the local people were incredibly friendly and grateful for the work that I was doing. I neutered around 60 dogs and vaccinated many more during my visit".

Now that he is back at home in Alnmouth, Stuart's next adventure is a little closer to home, as he sets up his new vet practice in Alnwick, Morris and Plumley.



Local communities to create 'their own futures'

A new system of local democracy will allow communities across the county "to create their own futures", the new administration has pledged.

Northumberland County Council has implemented a restructure of committees across Northumberland which will give town and parish councils a more active role and a greater say in what happens within their local areas.

The restructure of committees to create five new local area councils across Northumberland will allow them to decide and determine their own futures, based on the needs of the local community.

The new local area councils will include; North Northumberland, Ashington & Blyth, Castle Morpeth, Tynedale and Cramlington

& Bedlington and will meet bi-monthly to consider planning applications, road spending and petitions.

The introduction of the local area councils will allow local people across Northumberland to have a greater influence on the decisions that directly affect them and their communities.

Council leader Peter Jackson said: "We want to work with communities to help them create their own futures, rather than impose large projects or developments on them. These new Local Area Councils are one way to develop a better future for the whole county. For example in north Northumberland we would fully expect the local area council to work very closely with the major towns of Alnwick and Berwick

on local development plans for those communities.

"We want to be clear this is not a return to district councils, but about bridging the gap between an autocratic, centralised county council and communities.

"We value the work that town and parish councils are doing and wish to work closely with them, bridging the gap with a county council some see as distant and unengaging."

"And not only will the restructuring of the committees ensure the County Council's policies take into account the needs and aspirations of local communities, it will also provide savings of £250,000 over the next four years from reductions in allowances, which can be ploughed back into essential daily services."

Football Tournament winners

Tiny Woods Academy hosted a Football Tournament at Amble Welfare as part of the Amble Puffin Festival celebrations. It was hailed a success once again by children, parents and the viewing public.

Amble First School, Amble Links First School, Broommill First School and Grange View all accepted the Academy invitations to participate in the tournament.

Victory Shield Winners:

Grange View C of E First School

Victory Shield Runners Up:

Amble Links First School

Champions Shield Winners:

Amble Links First School

Champions Shield Runners Up:

Broomhill First School

Academy Director Josh Rutherford said 'It was a fantastic day. The football was played to a high standard and most importantly the children played with a smile on their face and enjoyed themselves!'

Thanks to Amble Town Council for their support to host the event, which has become popular since it began in 2015.

Tiny Woods Academy also



Above: Grange View School, Victory Shield winners

Below: Amble Links School, Champions Shield winners



hosted a Champions League Camp at Amble Welfare in the May Half Term Holidays

ahead of the Champions League Final which was played on Saturday June 3.

The children participated in fun and technical coaching sessions

learning ball manipulation, developing free attacking decisions, showing an initiative attacking attitude when in the final third and encouraging creativity when coming up 1 to 1 with the defender.

As it was Champions League Final week, the children played very own 'Road to Cardiff' in a



Amble First School with Tommy Noddy

Champions League Tournament format, building from Group Stage matches all the way through to the Final.

They even walked out to the famous Champions League theme and played with the official Champions League matchball.

FA Licensed Coach Josh Rutherford stated "It has been a brilliant week for the children. With it being Champions League Final week I thought I would give the camp a theme as we know children love watching the Champions League with the best players in the world on stage and with the best teams playing and it has been a success!"

Warkworth market stall

Summer is definitely on its way when the stalwarts of the Warkworth Show organised a Market Stall in the centre of the village to sell plants, and produce to raise fund for the Warkworth Show, due to be held in the castle grounds on Saturday 19 August.

Bank holiday weekend Saturday saw a flood of visitors in historic Warkworth and many enjoyed purchasing the locally grown and made produce, the proceeds from which go towards mounting the much loved village

show which is an annual attraction for villagers and visiting families.

Warkworth Show publicity Officer Derek Conway of Castle Street said, "everyone involved in organising the Warkworth Show is a volunteer and the aim is to provide a wonderful day for locals and visitors alike. The family atmosphere is the focal point of this fun day out and the market stall on Saturday 27 May helped raise funds to ensure the high costs of staging the show in August can be met."



Lionheart Cleaning

Commercial & Domestic Cleaning Services

Your One Stop Cleaning Service Provider

Our ever expanding teams of fully trained and insured operatives are insured and able to carry out all of the following aspects of Domestic and Commercial cleaning for you, or your business.

Carpets and upholstery	Conservatory	Pressure washing
Windows	Roofs	End of Tenancy
Gutters/Fascias	Commercial	Post Build
	Kitchens	General

01665 713448 www.lionheartcleaning.co.uk

Sullivan Associates

CHARTERED BUILDING SURVEYORS

Offering professional property advice throughout Northumberland

Building Surveys, Defects Inspections
Plans drawn for extension and new build
Planning Applications, Building Regulations Approval
Disabled Access Advice, Party Wall and Boundary Matters
Design and Project Management

Tel: 01665 513010

Email: info@sullivan-associates.co.uk

Fourways 2 6 Dilston Terrace Amble Northumberland NE65 0DT



Amble Town

COUNCIL

Meetings all at 6pm unless stated
Town: 13th July, 10th Aug
Amenities: 29th June, 27th July, 31st Aug
Garden Judging: Cllrs- 19th -29th June;
Independent Judge: 3rd or 4th July
Civic Award Night: 18th July

GARDEN JUDGING AND WARD WALKABOUT

From 19th to 29th June, Councillors will be out and about looking at the gardens in their wards to shortlist for the independent judge from Alnwick Gardens who visits in early July. They can only judge those which can be easily seen by the public passing by. Members of the community can also nominate a garden they would like to have considered. Those shortlisted are invited to the awards night on 19th July. Photographs of hidden gardens can be submitted and judged in a separate category but owners must be willing to open them for one day of public viewing. The Allotment Gardens don't miss out as there is an award for them too and also a spot for businesses and community areas.

This is also the time when we present our Junior and Adult Community Awards to an individual or group who have voluntarily done good works for the town or its people. Nominations are invited for these.

AMBLE DOES IT AGAIN!

What a fantastic week has just passed as this is written. The Puffin Festival, the Fringe events and the Colony certainly put Amble on the map. Lots happening in the town, the square and on the Braid all weekend, all made possible by hard work. The Events Committee consisting of members from Amble Business Club, Amble Development Trust, Amble Town Council and individuals will already be starting to plan for next year. This small group relies heavily on unpaid volunteers: walk leaders, talk presenters, community groups, 'sports' people, gazebo erectors, games helpers, business assistance, the litter pickers.

There are those who only ask for minimal expenses: the kite flyers and makers, the story tellers, the performers at the Colony. There are those who are paid but do more than the minimum required: N.C.C. workers, A.T.C. Seasonal help; and many more.

Without all these working together nothing would happen. So let's be thankful we have many people willing to give their time and energy. Let's think about what we can each do to help out or support these events; and remember to save our loose change to put in those donation buckets.

ONE WAY SYSTEM AND PARKING

We continue to be frustrated that NCC have still not adequately completed the new signage and markings throughout the town, including all of the one way system. So in some areas traffic enforcement officers and policemen can only advise and not fine those who continue to do the wrong thing. It looks likely that the long awaited larger town car park will have to wait until the new N.C.C. administration decides on the future of Arch. They had acquired the site that Tesco were to develop and had promised a car park there; their projects are now on hold, so Amble holds its breath! Lack of car parks inevitably leads to congestion, as drivers park both sides of the road. Please be considerate when parking or better still- walk for your newspaper or morning coffee and look around at your wonderful town.

CCTV

Work on this can now be started but it will take some time to be completed as we await conservation area approval and N.C.C. Street Lighting Department's dismantling of the old and erection of the new cameras where they are in the same location. Meanwhile those that can will be installed and become operational from that moment. So watch out if you persist in going the wrong way in the one way system, parking illegally or engaging in vandalism or anti- social behaviour as your actions will be seen.

PADDLERS PARK

The water feature is now working. The new play area surface is in place. Remember your table tennis bat and ball. All set for the summer weather to come! We constantly monitor the equipment there but please report to our office any faults you see, so we can activate a repair as quickly as possible. Try to encourage everyone to be responsible and take care when there. It is in everyone's interest to keep things in good order for the enjoyment of all. Any money needed for repairs or replacement means less money to buy new things or do more for the town.

DEFIBRILLATOR

We are looking into the cost of a community defibrillator to be placed at the Harbour area. This is a place where this equipment might well be needed at any time. We are hopeful that it will soon go ahead.

COMMUNITY LITTERPICK

A disappointing turnout for the last litter pick, but much litter. This was just before the Puffin Festival. Please encourage everyone to use the bins and be proud to say 'I kept my town tidy'. Look out soon for the new bin stickers to encourage everyone to put their litter in the bin. BIN IT- DON'T SLING IT.

EAST WARD:

Ian Parks,
33 Warkworth Avenue,
Warkworth. NE65 0TP

Helen Lewis,
5 Meadowburn,
Amble NE65 0PH
Tel: 07751 229 739

Craig Weir 76 Priory Park,
Amble NE65 0HY
Tel: 01665 712342

WEST WARD:

Ian Hinson,
11 Eastgarth Avenue,
Amble. NE65 0LW
Tel: 01665 710583

Jeff Watson
Friarsgate
14 Magdalene Fields
Warkworth NE65 0UF
Tel 07802 385367

Tracey Hinton,
13 George Street,
Amble NE65 0RZ

CENTRAL WARD:

Kate Morrison,
3 Island View,
Amble NE65 0SE
Tel: 01665 711191

Jane Dargue (Chair/Mayor)
10 Sylvia's Close,
Amble NE65 0GB
Tel: 07795360513

Martin Horn
22 Mariners View
Amble NE65 0JH
Tel: 01665 712836

COUNCILLOR'S CORNER

Amble is a town with a huge sense of pride and community spirit. The Puffin Festival yet again has been a huge success enjoyed by many people from near and far. This can only be done with much hard work and involvement from a host of community-minded volunteers.

Increasingly, community volunteers are at the heart of all thriving towns. We know from many comments that townsfolk are dismayed at the litter issues that can affect our busy town. As a council we are only too aware of this – we provide bins, work with N.C.C. and our own workers to clear litter. We also run regular community litter-picks to try to help tackle this problem as responsible individuals. All community help that we do get for this is massively appreciated and reinforces an attitude of pride in where we live. However we do struggle for support and turnout for these events so please consider helping out – if not litter picking, then for Pride in Amble or any of the many voluntary groups who help our town so much – love your town and make a difference.

Jane Dargue

TOWN COUNCIL OFFICES, FOURWAYS 2, AMBLE. NE65 0DT Tel: 01665 714 695 www.amble.gov.uk

Email ask@amble.gov.uk Twitter: @AmbleTC Facebook: www.facebook.com/AmbleTownCouncil

Office hours: 10-11.30a.m. & 1.30-3p.m. Monday to Friday

Elaine Brown Town Clerk

Minutes available to view in Office or online

Warkworth Golf Club

Do you have a youngster who fancies trying out golf? Warkworth Golf Club has three coaching sessions, on July 3, 10 and 17 that are open to non-members. These are run by an approved PGA professional. The 6.00 -7.00 slot is for beginners, with all necessary equipment supplied if needed. Come along and give golf a go! No obligation necessary.

On Saturday 3 June, Lady Captain Christine Douglas, drove into office. Meanwhile Club Captain, Graham Sawley is enjoying his year and has brought all his Yorkshire enthusiasm to the position. His Captain's day is on Saturday 1 July with live entertainment for the evening. The Club matchplay team which was promoted at the end of the 2016 season is acquitting itself well in the higher division and currently sits in second place. Back-to-back promotions maybe?

Membership of the club remains open. Anyone joining on August 1 will pay just £90 for the remainder of the year. Join on October 1 and the fee will be £340 with nothing further to pay until January 2019. Bearing in mind the course never closes due to bad weather, this really is 15 months golf for the price of 12. As in previous years you can join as a winter member on October 1 and get five months winter golf for just £125. Details of all to do with the Club is on our webpage www.warkworthgolfclub.co.uk and you can follow us on Facebook and Twitter.

Rotary Notes



FROM the proceeds of the Rotary Club's Christmas Collection, President Stephen Kerry presented a cheque for £400 to the North Northumberland Hospice at the club's meeting on 16 May. Pictured (L to R) are Rebecca Taylor (Hospice Events and Community Fundraiser), Rotarian Stephen Kerry and Julie Frost (Marketing and PR Co-ordinator for the Hospice).

Rotary's new President for 2017/18 is to be John Geggie, who has been Treasurer for 5 years. He takes over from Stephen Kerry on 1 July. The new Treasurer is Charles Lamb, and new Secretary is Alan Davies.

WEA history course

War at Sea: the significance of sea power from classical times to 20th century

Tutor: Tony Barrow 11 week course: 2 hours on Thursdays

Explores the living and working conditions of those who manned the fleet of the Royal Navy. Includes the Press Gang, mutineers, famous Northumbrian admirals, Trafalgar Geordies and more. Powerpoint lectures with discussion and questions.

Starts Thursday, September 14 10am – noon

Trinity Methodist Church, Percy Street (entrance in Leslie Drive)

Information from Norma Hinson tel. 01665 710583

Amble Open Triples



The annual Stanley Roper Shield, in conjunction with Co-op Funeralcare was played on Saturday June 3 at Amble Bowling Club. Winners were the Sunderland team of I. Fairweather, J. Britten and skip Frank Froud with Amble president Maisie Donkin and Mrs J. Roper.

On a glorious sunny day, a full house of 24 teams from all over the district battled it out for the honours. Runners up were the local rink of G. Nelson, C. Nelson and A. Shipley.

Thank you to our sponsors and supporters.

1st Amble Guides - Spring recap

The good weather is finally here but when it was still a bit chilly back in the spring, we were keeping busy at our unit. Our badge last term was the Animal Active badge, which had us designing mythical pets, learning about endangered animals and going on a trip to Pets at Home in Alnwick for a night of animal related curiosity.

In our ever turbulent world, our Young Leader organised a yoga and meditation evening which was great fun, even if we looked a bit silly doing some of the stretches! A group of us litter picked around Warkworth and we had a great meal out at the Taj Mahal in Amble. Then, before we'd had time to recover from Christmas, Easter was here so we celebrated with some good old fashioned Easter bunny crafts.

Look out for our entry in the next issue to find out about what we will have done this term and we all hope you have a brilliant summer, 1st Amble Guides

If anyone is interested in finding out more about Guiding, please visit: <https://www.girlguiding.org.uk/get-involved/>.

Druridge Bay 10k



Winners: 1st Male - Ian Harding - 34.15 (Morpeth Harriers)

1st Female - Nina Cameron - 45.58 (Heaton Harriers)

V50M - Gary Rowell - 39.31

V50F Diana Weightman - 49.36 (Alnwick Harriers)

U16M - Theo Johnson - 45.26 U16F - Inez Williams - 52.19

Oldest competitor - Reg Checkley (Heaton Harriers)

Male Team trophy - Alnwick Harriers

Female Team trophy - Heaton Harriers.

Photo by Bart Rippon

Royal British Legion

Warkworth and Amble District Royal British Legion
 Next meeting: 19 July 2017 at 7pm in Legion Room
 Warkworth War Memorial Hall, Castle Street, Warkworth
 Speaker: June Watson
 PowerPoint Presentation:
 'The most northerly British Army base at St Kilda, Outer Hebrides including photographs taken by June on a visit to the island'
 Visitors are welcome. (We suggest a donation of £2.50 to the Poppy Appeal to include pooled supper).
 A friendly welcome awaits you!

Can you help?

A volunteer is required for our 2017 Poppy Appeal to help deliver wreaths and poppy boxes to businesses in Warkworth and Amble. Please tel June on 07785 753100 if you can spare a few hours to deliver one day in mid- October and collect same after 13 November.

Coast Path Guided Walks

The Northumberland Coast Area of Outstanding Natural Beauty (AONB) Partnership is offering the chance to walk the Northumberland Coast Path led by Iain Robson who originally developed the route with colleagues from Northumberland County Council.

Each Wednesday until 2 August, Iain will lead a walk along a section of the path in the company of a coastal expert, maybe a botanist, geologist, ranger or birdwatcher. You can choose to do one section or them all - it's up to you.

The start time for each section coincides with the arrival of a bus and we will return to our starting point by bus. With fantastic ticket deals available, why not leave the car at home and use the bus?

Details of each of the stages can be found below, the walks are all free, but you will need your bus fare. We have given brief public transport information, but you can plan your journey at www.travelinenortheast.info

Booking is essential, you can book by phone on 01670 622660 or by email to coastaonb@northumberland.gov.uk

5 July - Warkworth to Craster - 13 miles (7 hours)

Start 09:30 Warkworth Market Cross to meet the X18 from Alnwick and Newcastle. Return on the 16:26 Travelsure 418 to Alnwick. Change here for services to Warkworth and Newcastle..

12 July - Craster to Seahouses - 9.5 miles (5 hours)

Start 09.30 Craster TIC to meet the 418 from Alnwick and X18 from Belford/Seahouses. Return on the 14:51 Travelsure 418 to Alnwick via Craster. Change at Alnwick for Arriva services to Newcastle.

19 July - Seahouses to Belford - 10.5 miles (5½ hours)

Start 10:05 Seahouses TIC to meet the Travelsure 418 from Alnwick and Belford. Return to Seahouses on 16:26 418 or 15.43 X15 to Alnwick/Newcastle.

26 July - Belford to Fenwick - 7 miles (4 hours)

Start 10:30 Belford Market Cross to meet the X15 from Alnwick/Newcastle or the Travelsure 418 from the Coast. Return to Alnwick/Newcastle via Belford on 15.33 X15 service.

2 August - Fenwick to Berwick-upon-Tweed - 12 miles (6 hours)

Start 10:35 Fenwick A1 Bus Stop to meet the X15 from Alnwick/Newcastle. Return to Alnwick/Newcastle via Belford on 15.25 X15 service

For further information or to book your place call 01670 622660 or email coastaonb@northumberland.gov.uk or visit the website www.northumberlandcoastaonb.org

East Coquet Local History Society

Meets at St. Mark's URC hall
 Every 3rd Thursday at 7.30pm
 September 21: "Broomhill Colliery", Eleanor George
 October 19: "Burial sites outside Bamburgh Castle", Graeme Young
 November 16: "How registration was initiated and changes", Lynn Macaulay, Supt. Registrar
 January 18, 2018: "Curiosities", Barry Mead
 February 15: Social Evening
 March 15: "Songs and tales of Northumberland", Geoff Hughes
 April 19: "Harry Hotspur, Heroic Northumbrian Knight,"

Andy Griffin

Hauxley Chapel services

Sunday	June 25	Mrs Sarah Mitchell.
Sunday	July 2	4.00 Area Service, Doxford Place, Cramlington.
No service at Hauxley		
Sunday	July 9	Local Arrangement.
Sunday	July 16	Coquet Churches Together Songs of Praise, Little Shore, Amble. No service at Hauxley
Sunday	July 23	St Cuthbert's.
Sunday	July 30	Rev. Dorothy Hewitson.
Sunday	August 6	Rev. John Macadam.
Sunday	August 13	Rev. George Brigham.
Sunday	August 20	Rev. Lynda Coulthard, Holy Communion.
Sunday	August 27	St Cuthbert's.

We are a small ecumenical congregation who worship in Low Hauxley on Sundays at 4pm unless otherwise stated, followed by a cup of tea. All are welcome. Contacts: Rev. Lynda Coulthard, 01665 713251, or Tim and Rachel Jones on 01665 712467.

St Cuthbert's Church Summer Fair

Saturday 5 August 2017 in the Parish Hall, Dovecote Street, 2pm - 4pm

The usual stalls including Children's stall and activity table, Bric-a-Brac, books, CDs DVDs, tombola, raffle, bottle pull, ladies accessories, delicious home baking, cream teas, jams and preserves. All welcome

Lifeboat coffee morning

Please come and join us at the RNLI station for coffee and home baking dates between 10.00am and 1.00pm on 16 July.

Don't forget Harbour Day on Sunday 27 August (more details to follow in the next edition of the Ambler).

Once again we would like to thank the community for all of the support you give us. If you would like to help us in our fundraising for 2017 please email Jill at jill.faulconbridge@gmail.com

Hauxley Fun Day needs volunteers

Hauxley Village Hall Committee needs volunteers to be part of a classic village fete with over 100 years of history!

Why not take the opportunity to get to know more of your community and share your ideas and enthusiasm.

You can take part in various different ways according to your availability and interests.

Want to know more? Contact Heather or Dave on 01665 713033 or h.wilkinson@ed.ac.uk

Hauxley Fun day is August 28 Bank Holiday Monday

Simon King book signing

Simon King, British naturalist, television presenter, cameraman, documentary maker and photographer will officially open Northumberland Wildlife Trust's new Hauxley Wildlife Discovery Centre on Friday 23 June.

Although this is strictly an invitation only event, Simon will be holding a book signing at the new building from 4.00pm onwards should members of the local Amble community wish to attend. The reserve will be fully open to members of the public from 10am on Saturday 24 June.

The whole build project has been made possible by National Lottery players and a grant from the Heritage Lottery Fund (HLF).

The Hauxley Nature Reserve straw build Facebook page can be found at <https://www.facebook.com/HauxleyNatureReserve>



Mauretania Day

Mauretania Day, Amble Harbour Village
Sunday 2nd July 2017

We will be celebrating the title 'The Kindest Port', given to Amble in 1935 by 'The Finest Ship', RMS Mauretania, on her last voyage.

There will be information on the Mauretania as well as the Harbour Village Amble/Fishing information displays.

We will have six 1930s vintage Morgan sports cars on display in the Harbour Village area as well as a 1930s theme including live music, balloons and bunting.

We aim to live up to the name of 'The Kindest Port' by doing 'Random Acts of Kindness' - This will include giving away a £5 Harbour Village voucher every hour, on the hour, from 10am-3pm.

There will be other 'random acts of kindness' throughout the day too!



Wholesale orders welcome!

- Beans roasted for local restaurants, bistros, and cafes.
- Free weekly delivery service.

mochamondo@gmail.com

Unit 6D, Amble Industrial estate

Junior football opportunities

Amble Juniors Under 10s football team are looking for new players to join. It is open to both boys and girls of all abilities who are moving up to school Year 5 in September.

We will be starting open training sessions every Thursday from the 6 July 6-7pm, we play behind the pavilion at the welfare on the JCSC playing field. We move indoors into the gym during the winter.

The team play in the Pin Point League and games are played on a Sunday both home and away.

We have a new coach for this season, Ian Armstrong. He has just completed his FA Coaching Level 1 badge over the last month. Ian is looking forward to creating a fun, safe learning environment for the children while developing their skills and continuing last seasons success.

The team were winners of their winter league which earned them promotion, an excellent achievement for their first season together. For further details or information please contact Ian on 07738300380.

Holiday activities for children

Coquet Shorebase Trust are organising events at Druridge Bay Country Park for children aged 8 - 16 years from Tuesday 25 July until Thursday 31 August. The cost is £25 for a half day or £40 for a full day. You can go and try canoeing or kayaking on Tuesdays; windsurfing on Wednesdays or sailing on Thursdays.

All sessions cater for a mix of abilities from beginners upwards. Call or email for session times and to book. Full details are on the website coquetshorebase.org.uk tel 01665 710367 e mail info@coquetshorebase.org.uk

Brambles fayre and holiday club

Brambles summer fayre is on 1 July from 12 midday until 2pm. They are also running a Holiday Club during the summer holidays with lots of fun activities. Please look out for posters or call into Brambles for more information.

Warkworth Carpet Bowls

Warkworth Carpet Bowls are looking for new members to join them on Monday evenings. We play friendly social matches (non league) against local clubs.

Taster sessions for new members at start of season, (Sept - March) Give it a try - an easy game to learn and enjoy.

Contact: Helen Wilson tel. 01665 711458 or Anne Grace 01665 714407



TELEPHONE ORDERS WELCOME

01665 710 442

MONDAY TO SATURDAY: 11.30AM-9.00PM SUNDAYS: 11.30AM-2.30PM

***** NORTHUMBERLAND COUNTY COUNCIL

1 BROOMHILL STREET AMBLE NORTHUMBERLAND NE65 0AN



Puffin Festival fun



It's been another successful Puffin Festival. From the feedback we've had so far, everyone seems to have had a really good time.

From the main festival, right through to the fringe events and Colony music festival, everything has been well attended, and the sun shone most of the time!

We would like to thank everyone who helped, took part, and came along to the events; we hope you enjoyed them as much as we did.

We're asking for feedback from those who attended the festival, so please let us know what you liked, didn't like, or what you think we could do better next year. Email julia@ambledevelopmenttrust.org.uk
Amble Puffin Festival Committee



Clockwise from top: Puffintastic crafts, Samba drumming, Tribe Zuza, Nightrain, dog show entrant and kites on the Braid, Harry's guided walk, The Range, dancing to Caribbean Crew, stalls in the Square. Below: crowds at The Colony.

Photos Bart Rippon and Anna Williams

