

The Ambler

Amble's Community Newspaper

Issue 107 Oct/Nov 2017

Town CCTV ready for action

New state of the art CCTV cameras have been installed around Amble, and can be accessed at any time by the Police.

The wifi-connected cameras are all high resolution, and some have numberplate and physical features recognition systems. They have been positioned in the central areas of town and in Paddlers Park.

The CCTV cameras have been bought by Amble Town Council after the old system installed by Northumberland County Council were deemed too old. The new cameras were installed by local firm Alncom.

The system features around 14 high-definition cameras and a number of 4K Ultra HD cameras which will be wifi networked.

Amble Mayor Jane Dargue said "I am absolutely delighted that the CCTV installation is almost complete. Our aim was to ensure that we have in place the best CCTV system possible to help combat anti-social behaviour and to protect our town assets.

Alncom has done us proud and delivered a high quality CCTV system that will serve the town well."



New CCTV cameras have been installed throughout the town centre

Signs point to major progress with hotel



Amble residents were positive about the hotel plans, which were put out to public consultation last year

Indications are that building works on Amble's hotel will soon begin, with the announcement that leading leisure company The Inn Collection Group (ICG) will be the operator.

ICG's property portfolio includes the extremely popular The Commissioners Quay Inn at Blyth and The Hogs Head Inn at Alnwick. They also own a number of pubs with rooms across the North East and North Yorkshire.

The Ambler has learned that building will start on site in November 2017, with a completion date expected by October 2018.

Councillor Jeff Watson told The Ambler, "This is excellent news for Amble. Prior to this, no contract had been entered into and the date for completion had never been fixed. This much needed hotel will create essential new jobs and opportunities for local residents. The new development

will be a major commitment by Northumberland County Council to the town."

The £4m project is expected to create up to 60 jobs during the construction phase, and the equivalent of 30 full time jobs once the hotel opens.

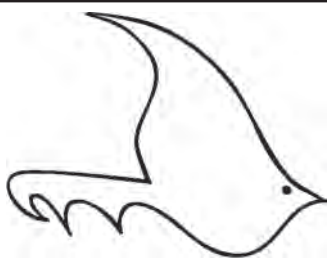
The hotel, bar and restaurant will be situated on Coquet Enterprise Park, with access from Percy Drive. It will operate on the ICG model of

providing value-for-money accommodation, quality beverages with an emphasis on local real ales, and home made pub fare served all day, 365 days a year.

The inn has been designed to include a mix of family, twin and accessible rooms, with a 150-seated restaurant and bar area, with a further 100 covers outside, on site car parking and cycle spaces.



Building is due to commence on the new Amble hotel in November 2017



The Ambler

Fourways 2
6 Dilston Terrace
Northumberland NE65 0DT
Tel: 01665 712929
www.theambler.co.uk
editor@theambler.co.uk
Twitter: AmbleByTheSea
YouTube: AnnaAtTheAmbler1



Follow us on Facebook
Follow us on Pinterest

Editorial Team:

Vivienne Dalgliesh - Cath Findlay
Norma Hinson - Andrew Mounsey
Bartle Rippon

Editor: Anna Williams

Thanks to:

Mark Beswick & The Artograffi Crew
Judith Hardisty

Distribution:

Dawn, Taylor, Bill and Rachel

Printing:

Azure Printers, Pegswood

Would you like to join
The Ambler team? We are a friendly
group who welcome contributions
and help from anyone who would
like to volunteer.

Thanks to all our contributors,
sponsors and advertisers:

Community Foundation
Coquet Fund

Inner Wheel Club of
Amble and Warkworth

Rotary Club of
Amble and Warkworth



The Ambler is a project of
Amble Development Trust

The views expressed in The Ambler
and The Ambler Online are not
necessarily those of
the Editorial Team

Printed on paper from sustainable
forestry in the UK

A foregone conclusion?

Amble is awash with plans for new housing. Five housing developments have been submitted this year alone, and now they are starting to reach planning committee stage.

Despite concerns that Amble's infrastructure is not robust enough to accommodate large increases in traffic, new NHS patients and students, there does seem little breach of planning regulation in the proposals, so permission is granted. Does that mean that all the proposed plans are now a foregone conclusion?

Well, not necessarily. Or at least it seems the planning committee is listening to local concerns, and in the case of the Acklington Road development, have proposed working together with the developers to allay some of the traffic issues (p16). And in the case of St Cuthbert's school site plans, the

committee deferred their decision, asking for more information on why the developers proposal included off site, rather than on site affordable housing.

There is no doubt we welcome new businesses and investment to the Town (p1). Just in the last few weeks we have a new laundry, bakery/sandwich shop, and on p10 you can read about the wonderful new cake pod at the Harbour Village, and a £60,000 investment in Amble.

It's always inspiring how much effort the people of Amble put into fundraising for local causes and tirelessly pushing to make the town better. Whether it's weeding the Town Square (p19) fundraising for a good cause (p15) or pushing the powers that be to sort out a long term parking problem (below), it shows this community is caring, strong and resilient.

New parking petition launched

A second parking petition has been launched in Amble, after the original petitioner expressed disappointment at the lack of progress in finding a parking solution for the town.

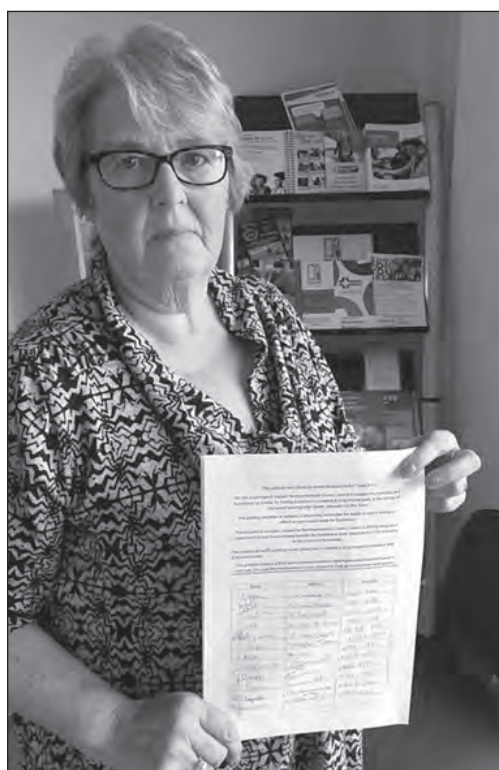
Ann Burke, chair of Amble Business Club criticised the lack of substantive progress, despite three years of monthly meetings with Northumberland County Council.

She told The Ambler: "I'm concerned with the general gridlock and traffic chaos over the summer. Sometimes it's felt claustrophobic on Queen Street and the rest of the one way system, with cars parked on both sides and the centre of the street full of traffic."

She was angry that although people are encouraged to come to Amble, they are frustrated at the lack of parking, and are going elsewhere.

"Local people are going elsewhere to shop because they can't find parking. Visitors are encouraged to come – quite rightly so, Amble is a lovely town, with lovely restaurants and unique shops – but they can't get parked."

Ann's original parking petition was set up in July 2013 and gained 3000 names. "That was set up because the traffic wardens were scaring people off the street. One year later, there was still no feedback, so I went to the Northern Area meeting, and from that we set up a parking group."



Ann Burke with the new parking petition

"It's now four years since the petition. We have a small amount of parking in the car park behind Tesco, but the lease for that land is up this year and the owner has other plans for it.

"The other car park (on Coquet Street) is leased to the Marina by Northumberland Estates, and there's no fixed number of spaces that they have to provide, so theoretically it could be very much reduced if the Marina want to do something else with the land."

Ann's research indicated that in 2014 over 300 people worked in businesses from the Wellwood to the end of Leazes Street. Of those people, 140 travelled in from other areas by car.

"Hence, we are bringing the plight of parking in Amble to the attention of the new administration at

County Hall," she said.

"Amble is not just a town purely for tourists. It's a business hub for local villages and hamlets: Warkworth, Hauxley, Acklington, Alnmouth, Guyzance and North Broomhill. People from those places come to Amble for the Post Office, dentist, opticians.

"Everyone's shouting for more infrastructure, but currently there's no long stay spaces for people and businesses to park."

The parking petition will be delivered to the Northern Area meeting in October.

If you feel the parking situation in Amble needs to be solved, Ann encourages you to sign. It is available in all shops.

Anna Williams

Further concerns as polluted mine water is pumped directly onto the beach

Untreated mine water is being pumped directly onto the beach in a newly designated conservation area, which has alarmed environmentalists, who claim that the water is polluted with high levels of iron and manganese.

A short term permit was issued by the Environment Agency (EA) to the Coal Authority (CA) to pump water from the old Hauxley mine shaft, in order to assess water levels and quality.

But environmentalists are concerned that the untreated mine water will pose a hazard to local marine life. Levels of manganese in the water taken from the mine shaft at the end of August reached 0.81mg per litre, which greatly exceeds environmental quality standards.

Professor Dickon Howell, ex-Chief Scientific Advisor at the Marine Management Organisation and a resident of High Hauxley said: "The levels of manganese as reported to The Ambler by the Coal Authority would exceed UK environmental water quality standards by some way if they were constant throughout the year."

After discussions with the CA, Prof Howell was informed that the current test is to confirm whether there are any blockages in the mining system. This would mean that the pumping station at Low Hauxley would not lower ground water levels throughout the mining block.

He told The Ambler: "They are also measuring contamination levels and this information is going to inform a feasibility study to set out options for how the CA may manage rising minewaters in the area in the future."



Les Weller and Natalie Wallace of NIFCA

The stretch of the Northumberland coast is already a designated Marine Conservation Zone, and in September was given Marine Special Protection Area (SPA) status.

Tom Stewart of the Green Party said "To be putting this contaminated water into the sea without proper filtration or treatment is insane – the health of our coast and inshore waters is critical to the future economy of Northumberland. This mine water has extremely high levels of manganese, which can be absorbed by crabs and other shellfish, and may then enter the food chain – manganese is a known toxin, and can cause symptoms similar to Parkinson's disease."

The Ambler asked both the CA and EA if the public should be concerned at the levels of heavy metals in the water being pumped out onto a public beach.

A spokesperson for the CA said: "The quality of the water being pumped is very similar to that which was discharged at the outfall during the opencast

operations. As the water is only moderately mineralised, treatment was not considered necessary during that mining period.

"The volumes of water being discharged during this test are also significantly lower than those which were pumped during opencast operations. A technical report concluded that the pumping test will not adversely affect the environmentally protected sites in the local area."

A spokesperson for the EA said: "We are working with the Coal Authority and Natural England to monitor the impact of this outfall. It will operate for



a short duration, and give all the relevant parties opportunity to assess environment risks, plan for the long term and safeguard our environment".

NIFCA told The Ambler that as soon as they were aware of the situation, they met with the relevant agencies. Chair Les Weller commented: "It is vital in respect of works carried out where there is pumping of water of this nature from old mine working into the sea, that there is no damage to the marine environment or the species that live there. In that respect NIFCA officers have been diligent in researching the position and corresponding with our partner agencies. Our officers will also continue to carry out tests in the area, particularly fish sampling, to seek assurance that there is no harm being caused to marine life as the water pumping continues."

The argument between the CA and local environmentalists over whether high levels of manganese found in water samples originates from old mine workings has been going on for some time. Back in April, The Ambler ran the story of areas of flooding and quicksand at Hauxley, which it was claimed were polluted and were a direct result from the area's mining history. But the CA disputed whether the old mine workings were connected to incidents of bubbling quicksand and to heavy metals present in groundwater. As a result of ongoing enquiries, the CA and EA promised to undertake tests and assess both the levels and the quality of the water.

You can read more on our website.

Anna Williams

PIANO TIME !

The one - stop



piano service

**PIANO LESSONS
PIANO TUNING & REPAIRS
PROFESSIONAL PIANIST**

www.pianotime1964.com

Tel: 01670 229562 // 0791 485 4072

Colin Nicholson Dip Mus. PTTLS

LA FAMIGLIA

BY THE OLD BOAT HOUSE

Kids eat free at La Famiglia*

*Conditions apply

One child one adult. Eat from the children's menu.
Offer doesn't apply after 5 on Tuesday to Saturday. Not available on Sundays
This offer is available until end of November 2017

Keep checking our Facebook page for Special Offers, including our Early Bird Christmas deals
www.facebook.com/lafamigliaamble



80 QUEEN STREET, AMBLE 01665 711862

Policing Matters: Your Northumbria

Welcome to the latest update from Amble Neighbourhood Policing Team (NPT). I hope you had a nice summer. This is always a busy period from a policing point of view. There are a lot more people in the area over the summer months as tourists come to the fantastic Northumberland coast.

More people means more calls to the police about all sorts of things. One week in August Northumbria Police recorded the largest number of calls on 999 or 101 this year so far at 13,709 not far off 2000 a day.

Other day to day business we have been dealing with is antisocial behaviour (ASB). We work closely with Northumberland Council Community Safety Officers and Housing Officers to deal with individuals and addresses which are causing annoyance and disruption to the community.

Four Community Protection Warning Notices have been served over the last few weeks, to individuals living in Amble, after complaints and consultation with members of the community. These notices set out specifically, to each recipient, what behaviour is causing problems to others and explains that should it continue they are liable to a fixed penalty fine or summons to court.

During August there was a burglary to the chemists on Queen Street where a safe containing controlled drugs was stolen. Officers from Amble NPT quickly



identified suspects and together with CID officers arrested two local males and after house searches a quantity of the stolen drugs was recovered. The following day a third male was arrested and two were charged with burglary and found guilty at court.

Colin Moore was sentenced to 16 weeks in prison and fined £300 whilst Jamie Easton was sentenced to 16 weeks in

prison suspended for 18 months and a condition to take part in rehabilitation activity.

Staying on the subject of drugs, a couple of weeks ago Amble NPT executed a drugs search warrant at an address in Amble. I know there are some local concerns around drugs in the town and would urge anyone with any information about individuals or addresses to contact police either by ringing 101, online via Northumbria Police website, email morpeth.npt@northumbria.pnn.police.uk or by contacting Crime Stoppers on 0800555111.

A male has been arrested on suspicion of arson after several fires in Amble. On 29 August a caravan was set on fire which then spread to a shed. There were also some rubbish bins set on fire. Anyone with any information about these or any other crimes, please contact police. These more serious crimes are thankfully rare in Amble and with your help we will be able to keep it that way.

Thanks for your time.

Ian Forster, Neighbourhood Police Sergeant

Police contact details

For on-going incidents Police can be contacted on the following numbers; To report an incident which is happening now call Emergency 999. For all other Police reports or historic incidents contact Non-Emergency 101.

If you wish to contact your local Neighbourhood Policing Team you can on any of the following E-mail addresses. This can be used as a way to contact officers with any concerns or with local information but please be aware that this is not continually monitored, but a supervisor or the officer will be in touch as soon as they can.

Morpeth.npt@northumbria.pnn.police.uk
Elizabeth.hall.7469@northumbria.pnn.police.uk
Ian.forster.2591@northumbria.pnn.police.uk
Liz.wilson.8012@northumbria.pnn.police.uk
Yolandie.walsh.498@northumbria.pnn.police.uk
Kenneth.mouat.5793@northumbria.pnn.police.uk
Darin.fawcett.4089@northumbria.pnn.police.uk

Amble Neighbourhood Police Team work closely with Northumberland County Council and our point of contact is Judith Davis, ASB Officer who is also happy to receive e-mail contact regarding Anti-Social Behaviour matters which may be occurring. Her email is: Judith.davis@northumberland.gov.uk



A phone has been installed on the wall outside Amble police's Fourways2 office. This will connect you to Emergency 999 or Non Emergency 101 call handlers.

Age of insecurity:

Health worries?

“Cyberchondria” is a very evocative word.

It refers to an aspect of hypochondria which is a major problem for us.

People used to buy large medical books to find (surprise, surprise!) that they had an extensive range of illnesses that increased in direct proportion to the time they spent reading a medical tome.

Everybody has physical problems of some sort, but it is the severity of the symptoms which prompts medical intervention. We all think that we are so clever these days, a view prompted by our ability to access information. It would be better if we had a system which filters the vast amount of stuff we can find ‘upsetting’, which can refer to add-on offers in many food outlets encouraging customers to buy extra food items, often of high calorie type.

I was talking to a former teacher who, like me, used to escort groups of pupils to the local swimming baths. A few decades ago we saw the occasional child who was heavy weight. Now we see the occasional lightweight. Answers on a postcard please!

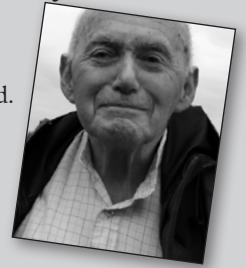
A kit has been developed which gives a 96% certainty level in the diagnosis of cancer cells after a ten second scan. Medical science has come a very long way since the inception of our NHS in the 1940s.

Elsewhere in the news:

- The reversal of the presidential election result in Kenya could lead to the same sort of thing happening in other countries.
- Over 2 million Chinese IT experts now police a firewall which prevents 1,500 million people from accessing sites deemed dangerous by the Chinese government.
- There is now a suggestion that J.K.Rowling and Potterism does little to nurture the imagination of children. I'll pass on that one, while confirming my opinion that a lot of young people were encouraged to read by following the exploits of H. Potter.
- What would George Orwell have made of our finest technology, in a world where your fridge can send you a message that the cat has done a poo on the kitchen floor?
- We now hear that the Honourable Member for the 18th century, one Jacob Rees-Mogg, could contest party leadership with Boris T, David D and others. Is Theresa May still our best bet?
- Brexit rambles on with harsh comments all round in a supposedly rational debate on how things should work out after the Great Divorce.
- We hear words from the Archbishop of Canterbury and others that there should be more help for poorer people. But in an age of globalisation it isn't easy to get hold of the money that many of us would like to redistribute.

Our home town is buzzing. Holiday lets, eateries, visitors are everywhere. Now all we need is JOBS.

Harry McQuillen



Personalised Gifts at 42 Queen Street

WHILE YOU WAIT
(helped out by the Elves)



Creation Express
PERSONALISED
Christmas

CARDS & GIFT GUIDE
www.creationexpress.co.uk



42 Queen Street, Amble, NE65 0BZ 01665 710982

WHAT YOU SAY...

The tale of the Hauxley weather vane

One of the many things I like about my work as a local handyman, is that I often come across very random and interesting things kicking around in people's houses and garages.

In the case of the weather vane, Heather May's father had passed away, and she was struggling through an entire household of fascinating items that had been collected from all over the world by her seafaring father.

When he retired, Ian May was Chief engineer for Cunard Lines, so as well as being very well travelled, he was also a highly skilled engineer.

When I first laid eyes on the weather vane it was sat in a laundry basket, awaiting a decision to be made regarding its future. I could see immediately that it had been beautifully engineered with high quality materials and bearings. I suggested mounting it

on a post in her yard but she did not seem keen.

When I hinted that it would be great to have it in Hauxley Village, Heather was thrilled with the idea, which her father would have loved.

The best person to talk to about anything regarding Low Hauxley is Andy Wilkinson, who has lived there all his life. When I told him about the weather vane he liked the idea straight away. We pondered a few potential locations and settled on the Chapel chimney as the best spot. So the next task was to get permission from the folks in charge of the Chapel. Fortunately they were more than happy.

Dave Palmer, from DRP Metalwork in Amble, made a special bracket, and I borrowed a roof ladder from High Hauxley Hall to get up the roof itself. I then had to mark and drill holes and get



the vane attached to the chimney stack without falling off!

Once the weather vane was firmly in place it looked resplendent in the sun, but we felt there also needed to be a memorial plaque. A spare piece of sheet bronze from Heather was cut to size by GV Engineering in Amble, then laser etched by Sports World in Alnwick with a text composed by Heather and her sister. Meanwhile I got a piece of

oak from Steven Thirlwell Joinery in Amble and prepared it as a mounting plate. The plaque is now installed on the chapel wall.

Well I never would have thought how much work my simple suggestion would create, but now it is all finished I am delighted to have contributed something to the wonderful village that has become my home.

Dave Cook, Low Hauxley

Togston Square plaque

Last year myself and John Appleby applied to the Town Council to put a new sign on the wall near the closed shop in Albert St. and High St. junction, stating that this area was originally Togston Square in about the 1825 – 1835, I think.

I visited Mrs. Smith as the wall was part of her property, and she gave me permission to have the sign placed there as the original stone plaque has eroded and there are only about three letters very faintly to be seen.

This information was passed on to the Town Council. Many thanks to the Town Council and Mrs.S. Smith for fulfilling this request.

Joan Shepherd Bisley Road, Amble

Torchlight procession theme

As everyone is aware, the annual Christmas Lights parade will take place on Sunday 19 November, from 4.30pm onwards.

This year's theme will be 'Pantomime'. If you or your group would like to take part in the parade, please let us know in good time so we can plan the procession order. The event committee are also asking for volunteers from the community to come forward to help on the day. Contact Julia Aston at Amble Development Trust on 01665 712929.

Kate Morrison, Amble Events Committee

We welcome your letters, email, Facebook and Twitter comments for publication. Your name and address must be supplied, but will be withheld on request. Letters/Facebook comments may be edited. Contact details on page2.



Photos from the Tour of Britain: Above by Judith Hardisty, Below left, by Bart Rippon, Below right: by Rod Hardisty. See the video on our website



Multi-million upgrade for A1

Plans for a multi-million pound upgrade that includes dualling a 13-mile stretch of the A1 in Northumberland have moved to the next stage.

Following a six-week consultation last year, three options were presented to residents and local stakeholders for plans to widen the A1 between Morpeth and Felton, and one option to widen the A1 between Alnwick and Ellingham.

Highways England is planning to upgrade the sections of single carriageway in Northumberland, creating a dual carriageway on the entire stretch of the route between Newcastle and Ellingham.

These improvements will provide additional capacity, and improve journey times and safety while supporting economic growth in the region.

A total of 587 responses were received and the majority of people (41%) preferred the green option for the Morpeth to Felton section and nearly half of respondents agreed with the orange option for the Alnwick to Ellingham section (49%).

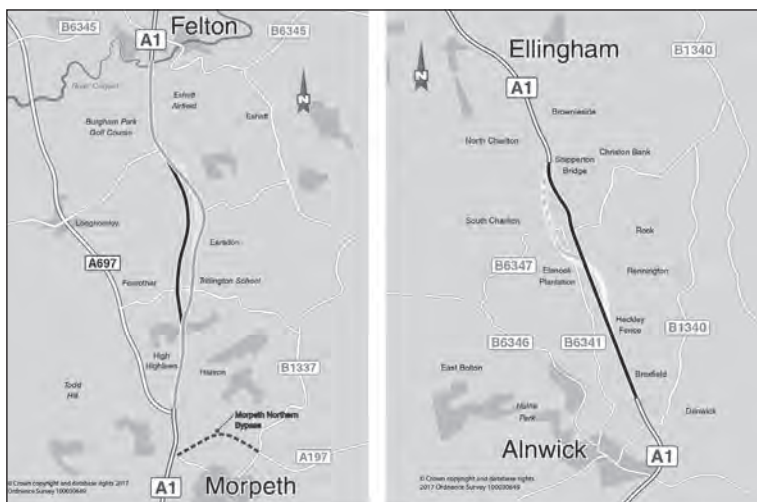
Highways England project manager Nanette Hoyle said: "We recognise the importance of this route and are delighted to announce the two options we are taking forward are the ones which the majority of people wanted in last year's consultation."

"Over the last few months we have worked hard to identify the best possible options by working through the feedback from the events, along with safety, economic and environmental analysis and we are excited to share our plans with local stakeholders, businesses and the community."

"Work now continues, adding detail to the design for each of the dualling options and on planning how we will deliver them in a way that keeps traffic moving."

"I would like to take this opportunity to thank everyone for taking part. There will be further opportunities to have your say as the schemes develop."

The green option between



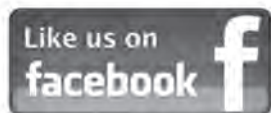
The two favoured options are coloured black in the above image

Morpeth and Felton includes building a new carriageway to the west of the existing road between Priest's Bridge and Burgham Park. This will improve safety along the route and will also have benefits during construction in terms of worker safety and efficiency. The existing A1 will act as a local road once the scheme has been completed.

The orange route between Alnwick and Ellingham involves upgrading the existing road to dual carriageway, widening either the east or west of the

current road depending on the local features that need to be considered. This option also includes improvements at the South Charlton junction.

Further work to refine the ideas will now take place and a further consultation with more design details included will take place next year. Construction work on the £290 million scheme could start by March 2020. Money for widening the A1 is being provided as part of the Government's £15bn Road Investment Strategy.



Why choose our Meals on Wheels service?

- **Meals delivered to your door by police checked friendly staff**
- **4 week menu choice offering traditional meals and light snacks**
- **Five star food hygiene rating**
- **You can pay daily, weekly or monthly**
- **Experienced cooks to support dietary requirements**
- **No contract or minimum usage just call when you want a meal or block book**

We deliver to Amble, Hadston, Widdrington and Broomhill

We have a range of meeting rooms large and small with WIFI, Telephone, White Boards, Refreshments, Friendly Staff, on the main Public Transport networks from North and South.

Why not visit our community Café where all the profits are recycled into the community

Monday- Saturday 9am-2pm

We have a lot of activities for older people, younger people why not get in touch!

An unmissable and uplifting choral performance

Amble's community choir, Harbour Lights, recently returned from London where they performed in 'Sing for Water' at the Thames Festival on 17 September.

The choir joined other choirs from around the country and Ireland to make up a massed choir of about 500 voices to sing seven 'water themed' songs at the the Scoop, in the shadow of Tower Bridge, on the South Bank.

Members of the choir were excited and proud to be taking part in the event, especially as one of the songs 'Lights' is about Amble and was written especially for Harbour Lights by Sarah Gray, the choir's leader.

Sarah said "I am delighted that this song, written about Amble and for Amble's community choir, has been



Above: Harbour Lights choir in London. To see video footage of the event go to youtu.be/EhVjuaYRL3A Photo by Sue Urwin

shared by singers throughout the country and we were all so excited to be part of Sing for Water."

This was an unmissable and uplifting outdoor choral

performance led by the fantastic Katie Rose and Michael Harper and featured guest performances from the brilliant Mouthful from Gateshead and the fabulous Una May.

Sing for Water concerts are run by the charity WaterAid and have, so far, raised over £1 million for projects in India, Burkina Faso, Malawi, Ghana and now Ethiopia. It was co-founded by the Thames Festival Trust and composer, singer and musical director Helen Chadwick in 2002.

Harbour Lights members have raised over £1,500 through sponsorship for the charity.

The choir always welcomes new members. You don't need to audition to join, just have enthusiasm for singing. We meet on Thursdays at 7.00pm in the Parish Hall, Dovecote St. Amble, during term time. Sessions last 1½ hours, first session free. If interested, call Carol on 01665 479476.

Vivienne Dalgliesh

20 mph speed limit now in force in town centre

Road signs have now gone up for Amble's 20mph speed limit. The limit affects the whole of the town centre.

From the top end, the speed restrictions begin on High Street at the Wellwood, and Bede Street at the vet's, down Church St and ending at Fourways roundabout.

It takes in the whole of Queen Street and the one way system including Marine Road and Links Road, and ends at the Old Storehouse. The 20mph restrictions do not include Percy Drive.



Peter steals the show again

The Mason Arms annual leek show was held on 9 and 10 September.

The show was judged by Alan Davidson from Blyth.

The winner was Peter Griffiths with 361.41 cubic inches.

2nd T. Urwin 235.47 cubic inches.

3rd M. Brierley 193.18 cubic inches.

The best leek in show was won by Peter Griffiths, he also took first prize for the Blanch leek and dressed onion.

The most improved grower was Michael Brierley

3 onions fresh dug Tony Urwin

The Masons Arms Leek Club would like to thank hosts Nigel Wilson and Amanda Peacock and all sponsors - Mr J.Kell, Mr C.Aston, Mr P Stewart, Mr B Knox, Mr M Rowell, The Co-operative Society, Amble Allotment Association, Mr K Jamieson, Mr D Jamieson and The Harbour Fish Shop.

Peter Griffiths, Secretary, Amble Leek Club



Amble fishmonger scoops certificate of excellence at Billingsgate Market

As part of Northumberland Seafood's endeavour to be the County's best fishmongers, Head Filleter Lee Nesbitt has just competed in his first fish filleting competition at Billingsgate Market in London.

On 27th August he made it through to the final of The National Federation of Fishmongers' Fish Craft competition, and gained a highly credible Certificate of Excellence.

Lee has fifteen years' experience in filleting, starting his career on the Quay at North Shields, and working his way up to become Head Filleter/Factory Supervisor for Taylor Foods.

In May 2017 he joined the team at Northumberland Seafood, to manage the supply of fresh fish for the new Fish Counter and Creel Fish Club at



Fishmonger Lee Nesbitt made it to the finals in a national competition

the Seafood Centre in Amble.

Lee said "It was a great experience being in a competition at the UK's largest fish market, meeting other fishmongers from around the country and soaking up the atmosphere of Billingsgate."

"I was delighted to make it through to the final in my first competition and who knows, maybe next year I'll do better!"

For more information on Northumberland Seafood or Creel Fish Club visit: www.northumberlandseafood.co.uk or www.creelfishclub.co.uk

The Northumberland Seafood Centre is open for fresh fish sales 7 days per week (subject to supply) until 31st October 2017.

See website for up to date opening hours.

New opening hours and contact details for Citizens Advice Northumberland

Here are details of the new opening times from 2 October 2017 for our face-to-face services across the county. They can be accessed through a mixture of drop-in sessions and booked appointments.

Northumberland Adviceline: 03444 111 444. 9am to 4.30pm Monday to Friday.

Specialist Debt Advice Helpline: 01670 339960 Opening hours: Mon to Fri 9.00am - 4.30pm.

Text service: Text 'debt' to 81400 to receive a call back within 2 working days.

Non advice enquiries and client referrals Telephone: 01670 339985. Please

note this number cannot be used to obtain advice.

The Amble office is now only open on Tuesdays 9.30am - 3.30pm Fourways Centre Bridge St, Amble NE65 0DR

Moir Macfarlane Chief Executive



Funeralcare

Our caring staff are here to listen and advise you, 24 hours a day, 7 days a week



Coquetdale Cottage, Queen Street, Amble
Tel: 01665 710437



Freshly made sandwiches, pies, scones, cakes...



...and so much more

15 Queen St, Amble NE65 0BX
Tel: 01665 714444

COQUET COSMETICS


Pod 2
Amble
Harbour
Village

Cosmetics, Skincare, Bath &
Body and Accessories

Book a Nail Appointment now
by popping in the pod, sending
us a Facebook message or
texting 07464269245

Facebook | Twitter | Instagram
www.coquetcosmetics-uk.com

K's Little Kakery



Slice Of Heaven

*Slice of Heaven! cakes,
crepes and tray bakes.
Come try some flippin
good feed!*

www.facebook.com/kslittlekakery
Pod 5, Amble Harbour Village

The 'P' Pod



Perfect for presents!

Carvings, home decor, fashion

Pod 6, Amble Harbour Village

Tues - Fri: 11am - 3pm
Sat & Sun: 10am - 4pm
Closed Mondays (except holidays)

www.theppod.co.uk

THE MAD JAM WOMAN

**PRESERVES
RELISHES
HOT SAUCES
DIPS
XMAS PACKS**



Old Fourways Centre
Bridge St, Amble NE65 0DR
07766 857680

Also available at the Seafood Centre

www.MADJAMWOMAN.co.uk

Life at the Harbour Village

I opened SeaWaves Studio at Amble Harbour Village in August 2016. I have been a Jewellery Designer and Maker for 15 years, having lived and worked in the Lake District until moving to Amble last summer.

Living by the sea inspired me to design a new range of Jewellery using Sea Glass found all along the Northumberland Coastline. I work mainly in Sterling Silver and have Sea Glass Jewellery ranging in colours from the rarest reds and

oranges to gorgeous turquoise and aqua blues.

The most collectible pieces are 'End of Day' designs which use multi coloured Sea Glass found only on Seaham Beach. The name 'End of Day' comes from all the glass that was put out into the sea at the end of the glass factory workers' day. The glass factories opened in 1853 until 1921 when all the glass works in Seaham closed down.

I also have a collection of



Sea-themed and Coastal Designs - Seahorses, Starfish, Dolphins,

Scallop Shells, Seashells, Anchors, Ships Wheels and Freshwater Pearls all set in Sterling Silver. I design and make necklaces, pendants, bracelets and earrings for every taste and style.

In the winter months we are open Wednesday to Sunday 11am - 3pm.

Karen-Rose, SeaWaves Studio

Kirsten serves up a slice of heaven

A mother and daughter team have opened up a new business in Amble, offering magnificent homemade cakes, deliciously gooey crepes and mouth watering traybakes.

Penny Blackmore has a fine reputation for her baking, and daughter Kirsten suggested that a pod in the Harbour village would be an ideal opportunity.

Kirsten told The Ambler: "I left university, where I had been studying art, and I fancied a change.

"My mum has been baking cakes all her life and I've always

said they should reach a wider audience. I thought there's nothing quite like it in the Harbour Village, so we went for it."

K's Little Kakery offers homemade cakes, traybakes and hot crepes.

As the weather gets colder, they will be selling soup and hot chocolate.

For opening times, see their Facebook page: www.facebook.com/kslittlekakery.

For those who love gorgeous food photos, they are also on Instagram.



Above: Kirsten Blackmore

£60,000 investment at Amble Links holiday park

Luxury holiday home company Park Leisure has invested £60,000 in its acclaimed Amble Links holiday home park.

The redevelopment sees the creation of 12 new pitches with private driveways in the park's landscaped grounds and the unveiling of three state-of-the-art 2017 Willerby Rutherford lodges.

Northumberland's most desirable owner's only holiday park is situated just a stone's throw from the stunning coastline and boasts 658 five star holiday homes. Owners benefit from a number of on-park facilities including The Old Storehouse restaurant, coffee shop and an exclusive health and leisure club.

The new two and three bedroom lodges offer a tiered setting to maximise space, with a large modern kitchen and spacious bedrooms, complete with an expansive rooftop terrace where owners can soak up the spectacular coastal views.

Speaking on the development, General Manager Darren Fowler, said: "This is a significant step in a series of developments planned for Amble Links, and has already received a fantastic response with eight of the new pitches having been sold already.

"This latest update to the park is part of a phased reinvestment plan which will see further developments made towards the end of the year, ensuring Amble Links continues to provide holiday home owners with the first class standards they have come to expect."

The news follows the recent introduction of an exclusive concierge ownership scheme at Park Leisure Amble Links which allows owners to enjoy their slice of a holiday home, providing all the benefits of a luxury five star stay but for a fraction of the investment.

More information at www.parkleisure.co.uk

Quality, fresh, locally sourced, seasonal fish box scheme.
Weekly, bi-weekly or monthly.



C R E E L
FISH CLUB

www.creelfishclub.co.uk
01665 713580

Are you looking for an affordable, local cleaning service?

Sue's Cleaning Services

We provide:

- One off Standard Domestic cleaning
- Regular Standard Domestic cleaning
- Holiday Home turnarounds
- Bottomer Spring Cleaning
- Bathroom Pick Me Up

Very reasonable rates!

Locally based, serving Amble, Warkworth, Hadston, Hauxley, Acklington, Broomhill & Red Row

Phone now for more details!

07702331707





Above: Karen-Rose of SeaWaves studio and her beautiful new mosaic made by artist Julie Smith

Cleaning up the Little Shore



Harbour Master Alan Punton (kneeling) and Harbour Assistant Mark Keen Below: After the cleanup; the Little Shore in September.
Photos by Bart Rippon

I have started the clean up on the little shore, as it has been sometime since it was last done [many years ago] it will take time and I was informed by the council contractor it normally takes two or three times before we will see any noticeable changes. I have had one run through with the sand sifter and a change can be seen so I will most likely do this again before the start of next year's summer holidays.

The people of Amble will have to show some patience as I am only able to do so much at any one time, but we will get there.

Alan Punton, Harbour Master



A lovely Coastal Jewellery Studio
at Amble Harbour Shopping Village,

Nautical and
Sea-themed
designs
available in

- Earrings,
- Necklaces,
- Charm Bracelets and
- Rings



A stunning range
of Sea Glass
pieces,
all set in
Sterling Silver

Winter opening times:
Wednesday - Sunday
11 - 3pm

Beautiful natural semi-precious gemstones

seawavesstudio

Pod 3, Amble Harbour Village

www.seawavesstudio.co.uk

edie pebble
Pod 14 Amble Harbour Village

Beautiful handmade gifts,
nautical decorations and
vintage treasures

**The Boat Shed
Gallery**

Pod 4, Amble Harbour Village

Original paintings and
prints from the coastline of
Northumberland.
Delightful cards and gifts.

- Handmade single origin chocolate
- Luxury iced milkshakes

NEW!
Mail order
coffee beans
and chocolate
'Roasted & Posted'

Seriously good coffee.
Speciality coffee beans roasted daily on site.
Pod 15 Amble Harbour Village
www.mochamondo.com mochamondo@gmail.com

cottages in
NORTHUMBERLAND

Looking to earn extra income from your holiday cottage?
Due to an increase in demand, we are looking for properties in your area that we can market on your behalf.
We can offer you:

- * Competitive commission rates
- * Full management service
- * Professional photography
- * 24/7 booking service

For a friendly chat call us on: **0191 231 3020**
or email: enquiries@cottagesinnorthumberland.co.uk
www.cottagesinnorthumberland.co.uk

ASK AVA

'Dear Ava. I've been watching the new Bake Off and I quite like it. Is that bad?'
-Anonymous of Amble

As most people know, the great British bake off has recently experienced some changes as it moved to Channel 4.

new hosts have so far succeeded in making me laugh.

The hilarious Mel and Sue left and so did Mary Berry, leaving Prue Leith to replace Mary and Sandi Toksvig and Noel Fielding to replace Mel and Sue.



Although it's not GBBO as we know it, it is still GBBO and lots of people will love it. So don't feel bad!

Let us know what you think on our Facebook page: facebook.com/artograffi.

Personally I loved Mel and Sue but the By Ava

MYSTERIOUS PAINTED ROCKS

Have you seen little painted stones around towns and visitor places? These are called Tyneside or Northumberland rocks.

If you don't know what it is, it's basically you go out around your town, pick up stones and small rocks, colour them in or put messages on.

You can colour them in any colour you want. Then you go and hide them.



Here are some examples of our coloured rocks.

In the summer, my mum and I went out and hid them and found more rocks. If you want to join go to Facebook and the titles called #Tyneside Rocks
By Ethan

DON'T BE AFRAID, WE'RE ALL GOING TO DIE

At the end of the bible, in the Book of Revelation, John has a revelation of the ultimate victory of good over evil and the end of the present age. Otherwise known as Apokalypsis Ioannou or John's revelation, which has now come to be known as the apocalypse. The modern definition being the complete final destruction of the world.

No-one knows how the world will end, but everyone knows it will. Many scientists believe that the sun will explode, causing a black hole that could swallow the solar system, or an asteroid impact similar to the one that caused the ice age.

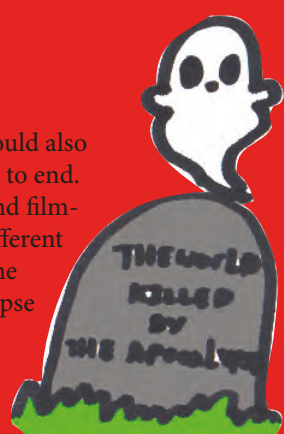
Another theory is that, because the universe keeps expanding, it could begin to shrink back in on itself, shrinking into an atomically small point and effectively crushing everything. There are other natural

disasters that could also cause the world to end. Some writers and film-makers have different ideas, such as the zombie apocalypse - slightly less unlikely than a natural disaster.

But I think that the most likely apocalypse is if the fossil fuels and plastic runs out and everyone freaks out because there's no wi-fi or electricity. It then results in everyone killing each other trying to get a mobile charger and someone nuking the world.

But all in all, no matter what the apocalypse, we're all going to die.

By Lily



WE MADE THESE POTIONS SO YOU DON'T HAVE TO

Everyone knows Hogwarts School of Witchcraft and Wizardry, is a fictional school of magic for students aged eleven to eighteen, and is the setting for the famous Harry Potter books by J.K. Rowling.

Here at Artograffi we decided to make our own potions, and we've made a vlog so you can see whether they worked or not!
Disclaimer: Do not try these at home!

Potion1

Ingredients: Mushy peas and ice cream garnished with fudge sprinkles - this potion will make the drinker feel really sick.

Potion2

Ingredients: Pringles and cheese with pineapple juice garnished with marshmallow fluff - this potion makes everything taste magical.

We made these recipes, and after mixing, blending, smelling and tasting we realised that you probably shouldn't try any of these at home as they were, as quoted by Lillian '*gurgling noise*' *death noise*'

Watch what happened on our Facebook page! www.facebook.com/Artograffi
By Emma



WELCOME TO OUR GRUESOME HALLOWEEN PAGE... DON'T GET SCARED!



BINKY AND THE BABY BAT

Binky was searching around the attic, looking through the cobwebs to try and find their Halloween decorations, when the bat flew out of the shadows, its leathery wings flapping noisily.

Screaming, Binky batted it away from his face before sprinting down the stairs faster than you could say bamboo. He shook off his fur, unable to shake the crawling feeling that it was still on him. Binky shivered again before quickly slamming the door behind him.

"What's all the racket?" his mum called up to him as Binky rushed down to her.

"There's a bat." Binky panted, "Upstairs, in the attic."

His mum sighed. "Come on, we'll go see."

They opened the door to the attic, Binky hiding behind his mum as they braved the stairs and turned on the lights to find... nothing. Just the cardboard boxes covered in dust. But in the corner there was a bit of movement- a darkish brown wing and a little furry head. Binky screamed again.

But his mum just rolled her eyes and walked over, carefully inspecting the little creature.

Binky slowly walked over, realising with its little ears and fluffy head it was actually quite cute.

"It must have got trapped in here, poor thing, it's only a baby." His Mum said, frowning down at it.

Binky swallowed, still a little nervous it might fly at them. "Should we take it outside?"

"No, you're not allowed to move a bat if it's in your house, but we can get it some milk, and some fruit."

Going and getting it some watermelon from the kitchen, Binky walked back up the stairs while his mum searched up what to do with it. Looking at the little thing, he couldn't help but feel a little bit of sympathy for it. Maybe it wasn't the evil creature he'd thought it was. After the little bat had had its fill of fruit and milk, they opened the window so it'd be able to fly away.

"Are you sure we can't keep it?" asked Binky, taking a last look at the cute baby bat, still sitting on the floor by the box. His mum just gave him an exasperated look before they both headed downstairs for tea.

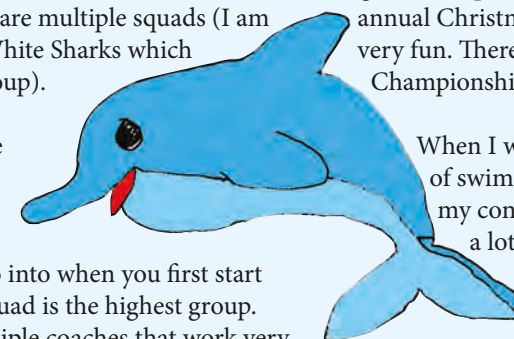
By Lily

SWIMMING WITH DOLPHINS

Alnwick Dolphins is a swimming club based in Willowburn (Alnwick leisure centre). There are multiple squads (I am in the Great White Sharks which is the third group).

The groups are set up so the Minnows (first group) is the one you go into when you first start and the top squad is the highest group. There are multiple coaches that work very hard even when the sessions are very

early in the morning. We frequently go to galas (competitions) and there is an annual Christmas Gala which is always very fun. There is an annual Club Championships which is also very fun.



When I was younger I was scared of swimming but it has helped my confidence in the water a lot and I have definitely improved my technique as well. It's hard work but 100% worth it!

By Amy

LANGUAGE CAN BE DISCRIMINATORY

Ableism - The discrimination in favour of able-bodied people, and against disabled people (whether it be mental or physical).

People who are ableist constantly use 'person-first language' to describe autistic people. They will refer to 'a person with autism', which implies we can be cured.

Person-first language is preferred by some, because it is supposed to remind people that we, the autistic community, are still people. (Note: Why shouldn't we be

considered people anyways?).

Most of the community do not like (hate it, for the most part) as autism is very much a part of our identity.

If the above example doesn't upset you, let's replace 'autism' with something else. 'Person with gayness/homosexuality'. 'Person with blindness'. 'Person with heterosexuality'. 'Person with maleness'. 'Person with femaleness'. Do you see my point?

By George-Anne

Arch

Changing the face of Northumberland

- investing in residential and commercial property
- building new homes for sale and rent
- developing high quality industrial and commercial workspace
- implementing major projects across Northumberland
- attracting investment and promoting business growth

www.archnorthumberland.co.uk





Peter Proctor Cannon with friend, Chelsea Pensioner David Lines

Raising funds for the war memorial

SOME of the individuals and groups who have raised funds for the clock restoration, which is estimated will cost £50,000. Amble town Council have secured £30,000 grant. Top to bottom: Peter Cannon's fundraising has collected over £3,000. Ladies of the Little Shore Crochet Club raised £1,765 by raffling their crocheted blanket.

The health centre held a coffee morning where £240 was raised.

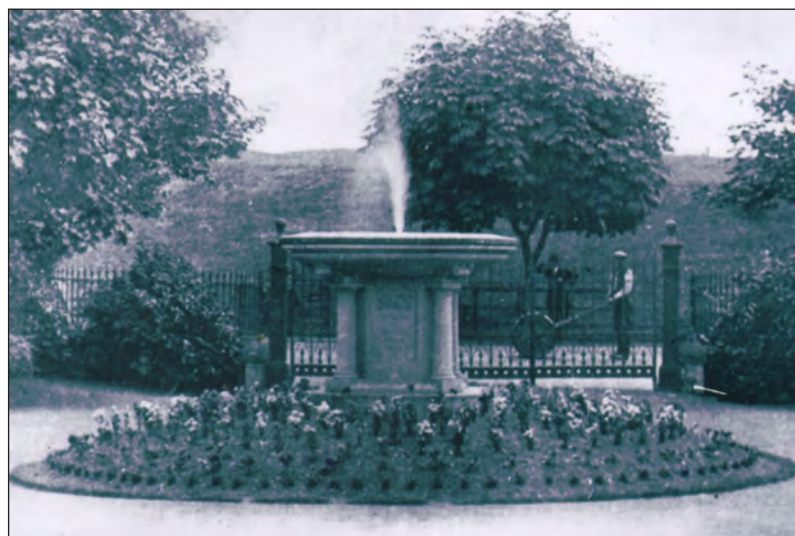


Above: l-r Josie Buddle, Gillian Stewart, Kathryn Baxter, Suzanne Gair, Jan Henderson, Dora Henderson and Eileen Potts



Kymala Thornton, Joy Stocks with Margaret and Dennis James.

Centenary of Amble's first monument



Above: the fountain at Amble's West Cemetery was Amble's first memorial monument

One hundred years ago, on Sunday October 27th in 1917, the ceremony of unveiling the memorial fountain, at the West Cemetery, took place.

A good many people, including Amble and Alnwick councillors, gathered around the beautiful piece of work, a fitting memorial to William Gibson, who designed the West Cemetery.

It was a fine setting for the event, amid the scenery of the cemetery, with the autumnal colours of the trees.

The East Cemetery, Broomhill Cemetery and Amble's great water scheme were also designed by William Gibson. He had died suddenly on September 23rd, 1913.

Because of the start of the First world War, it was decided by the council committee to delay the erection of the fountain. Funding for the memorial started after the war had ended.

The cost was £71 but they were £10.45 short of that amount. However it was made up by donations from the public, who put their contributions in a box, placed on the gates.

Mr. Burton, surveyor, designed the fountain. It is of Howorth stone and weighs over a ton: the first public monument erected in Amble. The architecture is Doric. On the west side panel are the Latin words: *'Monumentum quiris circumspice'*, which translates 'If searching for his monument, look around'.

I believe the memorial fountain was shut down during the Second World War. Then in 2000 it was overhauled and restored, with funding from the Co-operative Society, applied for by Kit Rollo.

It was switched on again in July of that year. Since then further restoration has been carried out so that it continues to flow.

Joan Shepherd

Hauxley Parish Council



Councillor Vacancies

Hauxley Parish Council are looking for two new candidates to serve as Parish Councillors.

- Are you interested in local current affairs?

- Do you wish to serve your Community?
- Could you provide a voice for residents?

We would like to hear from you

For further information or an informal chat please contact the Parish Clerk

Parking plea

Residents and members of Hauxley Parish Council have requested again for all residents and members of the public to adhere to the parking restrictions to help alleviate the persistent issues with car parking and access in the parish.

Parking within the parish will continue to be monitored.

New signage

A new sign has been erected at the entrance to Low Hauxley to direct visitors to the newly opened Hauxley Nature Reserve. This has been a great success in helping visitors and tourists.

Water investigations

The Parish Council are awaiting the outcome of the results of the investigation of the water samples carried out by the Coal Authority and will update residents as soon as we have them.

Next Meeting

The next meeting of the Parish Council is 6.30pm on Monday 13 November 2017 in the Village Hall, Low Hauxley.

Residents are invited to write to the Clerk, Vicki Smith, if they would like to raise any issues at the bi-monthly parish meetings.

Contact details: Parish Clerk: Miss Vicki Smith

Address: 11 Acklington Road, Amble, Morpeth, Northumberland, NE65 0NF Telephone: 07875445495

Email: hauxleyipc@hotmail.co.uk Website: www.theambler.co.uk/category/news/politics/hauxley-parish-council

Planning permission granted for major development

Outline planning permission has been granted for the development of up to 500 houses on land off Acklington Road, adjacent to James Calvert Spence College.

The proposal by Hindhaugh Homes was given the green light by Northumberland County Councillors at the strategic planning meeting in September.

Several conditions were imposed on the plan, including a new junction into the estate, and the widening of Acklington Road to accommodate a ghost right-turn lane and a pedestrian refuge.

Councillors noted residents' concerns about the potential increase of traffic on Acklington Road, and added a condition that Hindhaugh Homes should extend the estate road to the edge of its boundary.

They also stated that county council officers would work with another developer on an adjacent site, to develop a link road from the estate to the A1068.

Councillor Jeff Watson said he was pleased that the proposal for a link road had been included in the decision. "This proposal was that the approval be conditional on the developer constructing a full size road from Acklington Road to the far side of the development. This condition will allow a link from the A1068 and other



The public consultation for the development drew large numbers

forthcoming developments so that traffic going to and from the development will be able to avoid the Masons corner."

Chair of Amble Business Club Ann Burke was positive about the decision. "I think it's great for Amble, and I believe it will mean more people will use the independent shops in the town."

Amble's Mayor Jane Dargue said "I am pleased to note that some of the concerns expressed by the Town Council and the community were recognised by imposing conditions to try and alleviate them - such as changes to Acklington Road and safer pedestrian access to the schools. It is also encouraging that the developer will extend the internal road through the whole site and that the Strategic Planning Committee asked NCC

officers to hold discussions with adjacent developers about the future possibility of a link to the A1068, which we had suggested should be investigated."

But criticism was levelled at the development, saying it did not provide what Amble needs.

Councillor Terry Clark told The Ambler: "This plan did not tackle the basic problem - the type of houses. What is needed is affordable rented starter homes for young couples and single people, bungalows for our older generation. Housing should be about homes for the many, not investment opportunities for the few."

Calls for improvements to Amble's infrastructure were also voiced. Julia Aston, director of Amble Development Trust said "We welcome further investment in the town. However there

is the need to ensure the infrastructure can cope. As the town grows infrastructure improvements will follow. As with any business, if there is an identified need, someone will spot an opportunity and provide that service.

"However, there are other improvements that require co-operation between developers and planning officers to ensure these are provided, and it is up to county councillors to enforce, for example, healthcare (along with local care trusts), education and road infrastructure. Once these are agreed then surely the town and businesses can only benefit from increased activity."

Detailed plans such as the estate layout, number and types of houses, will be submitted to planning at a later date.

Anna Williams



We're very excited about further developments to our outdoor space at Amble Links First School during the summer.

We now have a large new gazebo that we'll be able to use for a range of activities throughout the school day for

sheltered outdoor activities. The gazebo has been paid for by the amazing fundraising efforts of our school PTA through the many events they have organised that are so well-supported by our families.

Following a successful bid for a National Lottery Big

Action at Amble Links School

Lottery Fund Grant of £10,000 funded by lottery players, we have also started construction of a 350 metre long multi-use path around the perimeter of our school field. We hope to be able to use it at playtimes, lunchtimes before school and after school for running, cycling and scooting (amongst other activities!) and make use of the large outdoor space we have throughout the year.

We will also be encouraging children and parents to complete a 'morning mile' using our path.

We're sure that lots more ideas about how we can use it will come up too!

We're continuing to develop how we use the path and will aim to physically develop it further still.

We'd like to thank Kelly Construction for their ongoing



Left: Children can work outdoors in the new gazebo. Above: the new multi use path is proving popular already

hard work on these projects.
*Paul Heeley,
Amble Links First School*

Welcome back to Trust Life. In the last edition I encouraged everyone to enjoy the sunshine – apologies if you missed it, the sunshine that is. It hasn't been the best of summers as far as sunshine goes, but we have to take what is sent and given what is happening in the Caribbean and America, we didn't fair too badly!

Parking

Amble has been very busy this year with tourists, which in turn has exacerbated the parking problems. After meeting for three years we did think we had a solution, but unfortunately it appears to have been pulled from our grasp, due to financial constraints, which is hugely disappointing.

We have looked at every site imaginable and logistically there were only two options that would meet the needs of the high street and harbour and everyone looking to park for more than four hours in the town.

We will keep working on this, but there has to be a limit of how long everyone spends on this if any viable solutions are quashed. Everyone sitting on the committee is committed to finding an answer but we need NCC to understand the issues and

work with us on finding an answer as well as supporting the group.

Also many are concerned about the signage for the one way system, which by the time you read this should be complete. Yes it's taken a long time, but again there have been legal hoops to jump through and budgets identified in certain financial years. Frustrating, but something that has had to be worked through.

Welfare

On the Welfare we were considering submitting a planning application for houses, bungalows and high rise flats – would appreciate the community thought in this.

Yes, I am saying this with my tongue in my cheek, but it would appear that once again those who choose to, are making comments without knowledge or understanding of the legalities of the Welfare. I won't go into anything now, as a limited few appear to have the ability of misconstruing the truth regardless of how it is written in a bid to be clear and transparent.

I reiterate, if you have any questions, please come in to Fourways2 and ask. I will answer any questions. I cannot guarantee

you will like the answers, but they will be the truth rather than speculation.

Seafood Centre and Hatchery

We have now released 600 baby lobsters with another 600 ready to go by the end of the month. Release locations so far are Amble, Beadnell and Newbiggin.

For those interested in lobsters (!) we currently have one very large female who we guess is aged between 20 and 30 years old and also a rare blue lobster, which I am told the chances of a lobster that colour are two million to one – that's pretty rare!

Lee Nesbitt one of the Seafood Centre fishmongers entered the Billingsgate Fishmongers annual competition in London. Lee got through to the finals of the Craft Competition and while not winning got a Certificate of Excellence – well done Lee an excellent result especially against such stiff competition.

We are still waiting for updates on Amble projects from Arch and NCC, although we have been assured the hotel will be going forward next spring.

We bid you adieu
Julia and Trust staff

REPORTS FROM OUR *County Councillors*

Firstly, can I acknowledge the importance of working together with town and parish councils. Building this relationship is the key to providing for the local community, working together in partnership for the good of Amble, Hauxley and Broomhill.

Secondly, many thanks to all who came to my surgeries. It has been very encouraging engaging with people in all parishes.

Please do not hesitate to call in at my next surgery or contact me with any issues or specific enquiry. I will work to the best of my ability to help you with support or information. Thanks

Cllr Terry Clark.

Terry.Clark@northumberland.gov.uk mob 07779 983768

I would like to give you an update on local issues. The board of Arch has agreed funding for the hotel in Amble and discussions with the new operator have been completed. Building works are due to start in the near future. Prior to this, no contract had been entered into and the date for completion had never been fixed.

It is hoped that a car park might soon be agreed for development. The council and Arch have been examining two possible sites with proposals due to come forward in the next few months for consideration.

The application for 500 houses off Acklington Road was passed with my proposal being accepted. This proposal was that the approval be conditional on the developer constructing a full size road from Acklington Road to the far side of the development. This condition will allow a link from the A1068 and other forthcoming developments so that traffic going to and from the development will be able to avoid the Masons corner.

After my request I have received confirmation that the road to the Shorebase Trust will be repaired soon.

I am available on jeffrey.watson@northumberland.gov.uk and 07802385367

Jeff Watson

Rotary Club golf charity day



Amble and Warkworth Rotary Club hosted a very successful Golf Day at Alnmouth Golf Club, Foxton recently, where 40 teams travelling from all over the County competed in a very enjoyable charitable tournament.

On a perfect golfing day, the event raised over £5,500, and this amount is to be divided equally between The Sir Bobby Robson Foundation, The Great North Air Ambulance and SSAFA.

The winning team came from The Mason's Arms, Warkworth, with a score of 122 points. Hobson Fore scored 117 points and third place went to a team of golfers led by Richard Calvert from Morpeth, with a score of 116 points.

At the prize giving, Chairman of the Golf Day, Rotarian David Bell, paid tribute to Alnmouth Golf Club for allowing the courtesy of the course. He thanked all the sponsors for their generosity, those who had donated rounds of golf as prizes, and the 40 teams who took part. The day ended with an excellent meal in the Club restaurant.



Amble Town COUNCIL

All at 6pm unless stated otherwise
Town: 12th Oct, 9th Nov.
Amenities: 30th Nov
Remembrance Day Service: 12th Nov 10.55am

WAR MEMORIAL UPDATE

We were delighted to learn that the repairs to Amble Clock Tower War Memorial had been awarded a grant. This will be a tremendous boost and a great help to the final cost which quite possibly, like many remedial works, could be more than the original estimates to complete everything. However what has given even greater delight is the way our community has rallied to this cause. There have been individual donations, group donations and various efforts carried out to raise money. Some have given many hours of their own time to raise awareness as well as funds but they would not want to be singled out: you know who you are.

The original memorial was built on donated land using money from individual donations and public fundraising for the work. How fitting it is that again our community has raised money for this monument which all see as synonymous with the town. We are so very, very grateful to you all.

However when the work's schedule was assessed, it was seen that it could not be guaranteed to be completed in time for this year's Remembrance Day service. There was so little leeway that even a day of stormy weather or one where something didn't go to plan could mean being left with scaffolding and green mesh covering the memorial; this did not seem appropriate so the work will not start till spring next year.

ADULT EDUCATION COURSES

Year on year these have decreased until we are left with only a handful running while other places, such as Alnwick, appear to have more added. Not everyone has access to transport and public services are often unsuitable. There are various reasons for the decline. With Amble's increasing population, we are asking NCC to reconsider the offer. If you would like to see more courses here then please contact NCC so we can show that there would be sufficient support to consider expanding courses again.

COUNCILLOR'S CORNER

While walking through the Sunday Market in Amble this week, I was reminded of how fortunate I am. I have always loved walking along the harbour, looking out towards Warkworth. Few places can rival this. It's not only the scenery and the sounds of Amble which make us privileged to live and work here: it's the people, the community. If something needs doing in Amble, there'll be a group of individuals working to get it done: raising money for the lifeboat or the repairs to the Memorial Clock Tower.

Whenever people ask me where I'm from, I'm always proud to say "Amble" for even though I now live up the road a bit in Warkworth, Amble is definitely home. There is such a lot to be proud of. The town is gaining a reputation for good quality food, quirky shopping at the pods and a traditional high street. The town square is looking the part too. Much credit for this must be given to the group whose name reflects my feelings on Sunday: Pride In Amble.
Cllr Ian Parks

REMEMBRANCE DAY

Letters have gone out to those groups who we know attend each year to honour those who gave their lives in many conflicts. If you are an organisation that wishes to lay a wreath for the first time, please contact the office to confirm the arrangements. Each year more wreaths are laid and more people attend. Please come and join us there and for the service afterwards in St. Cuthbert's Parish Church.

LOCAL DEMOCRACY WEEK

As this is distributed, councillors are getting ready to go into our local schools to work with the pupils in expanding their knowledge of democracy. This year we are linking the role of the council to a curriculum topic on 'Values', demonstrating how some of life's values, such as respect and tolerance, are invaluable to our work with and for the community. Councillors enjoy these visits as we also bring away lots of the pupils' thoughts about the town and their ideas for it.

WORKING WITH HMP NORTHUMBERLAND

We continue to work with Sodexo in a partnership which gives benefit to the town and the prisoners. While they do have commercial contract work, they want to work with the surrounding communities too. We have had seats refurbished and new ones made, picnic benches for Paddlers Park, banners for Puffin Festival and Christmas to name a few. Plans being considered include Frisbee/Ball boards and cycle racks for the Paddlers Park, and a directional signpost for the Mound area. This community work not only gives added interest to the prisoners' work but also saves or reduces the cost to the community. We hope this joint working will continue.

EAST WARD:

Ian Parks,
33 Warkworth Avenue,
Warkworth. NE65 0TP

Helen Lewis,
5 Meadowburn,
Amble NE65 0PH
Tel: 07751 229 739

Craig Weir
76 Priory Park,
Amble NE65 0HY
Tel: 01665 712342

WEST WARD:

Ian Hinson,
11 Eastgarth Avenue,
Amble. NE65 0LW
Tel: 01665 710583

Jeff Watson
Friarsgate
14 Magdalene Fields
Warkworth NE65 0UF
Tel 07802 385367

Tracey Hinton,
13 George Street,
Amble NE65 0RZ

CENTRAL WARD:

Kate Morrison,
3 Island View,
Amble NE65 0SE
Tel: 01665 711191

Jane Dargue (Chair/ Mayor)
10 Sylvia's Close,
Amble NE65 0GB
Tel: 07795360513

Martin Horn
22 Mariners View
Amble NE65 0JH
Tel: 01665 712836

CCTV

By the time you read this, the majority of the new cameras should be installed and operational. We are grateful to those businesses which have allowed us to place them on their premises in order to get the maximum coverage. They operate 24 hours, 7 days a week throughout the year.

Whilst not constantly manned they record continually and the images can be accessed at any time on police handsets. These cameras have the latest available technology and are very sophisticated- number plate recognition, movement pinpointing, physical feature recognition. We hope they will reduce anti- social behaviour of all kinds and will enable the police and enforcement officers to reduce crime. They currently cover the central area of the town, some of Percy Drive and Paddlers Park; however there is capacity to increase the number.

Our local County Councillors are looking at covering other areas through their Members' Small Schemes budget. If there are any businesses outside the current area coverage who would be interested in financing further cameras to cover their area, please contact the office to discuss this.

TOWN COUNCIL OFFICES, FOURWAYS 2, AMBLE. NE65 0DT Tel: 01665 714 695 www.amble.gov.uk

Email ask@amble.gov.uk Twitter: @AmbleTC Facebook: www.facebook.com/AmbleTownCouncil

Office hours: 10-11.30a.m. & 1.30-3p.m. Monday to Friday

Elaine Brown Town Clerk

Minutes available to view in Office or online

Taking pride in Amble



No-one can fail to have noticed the huge improvement to Amble Town Square's gardens and flowerbeds in recent years. The area is colourful and tidy, thanks entirely to the small, dedicated group of volunteers called Pride In Amble.

The Ambler caught Maureen Gibson here hard at work in the rose beds. "There's always room for more volunteers!" said Maureen. Contact Pride In Amble on 01665 712342.

Celebration at the Radcliffe Club

Pictured below are some of the North East England Cadet Pipers and Drums, who helped the members of the Radcliffe Club to celebrate its 45th anniversary on September 23. Other entertainers included a singer and comedian.

Secretary of the club, Ian Moyle was satisfied that it was a successful evening. "Everyone enjoyed the entertainment and had a great time", he said.

The Radcliffe Club is a members' club, run by and for the members. Committee members are all volunteers and have a hands-on approach. There are three members of staff, including Manager Charlene Allan, who said, "Thank you to all the volunteers for all their amazing hard work over the years." "Without their efforts, we wouldn't be celebrating 45 years".

The club is available for functions and community use. For further information, contact Charlene on 01665 710406. *Photo by Judith Hardisty*



© Judith Hardisty



DO YOU WANT TO PROTECT YOUR FAMILY'S ASSETS?

Protect from 3rd Party Challenges & Divorce and Business Failure, Sideways Disinheritance

Free Advice on Tax Planning on Care Costs

Lasting Powers of Attorney (changed 2007)

Make sure you have them in place whilst you're fit and healthy

NEED HELP WITH PROBATE? Fixed Fee from £1000

Write A Will from £99 or Free Will Reviews

Ring Enid: 07772 182 130 • 01670 855 768

for a **FREE CONSULTATION** in your home



Email: enid.eww@sky.com

Barrister Intermediary and
Member of the Legal Services Guild



Cromie Pharmacy

Are you flu safe? Get the jab!

**Flu can be a serious illness
... are you at risk?**

Getting a flu jab can protect you all winter. It's free if you are over 65, pregnant, or have a long-term health condition such as severe asthma, diabetes, a chest, heart liver or kidney complaint or lowered immunity.

You need to get the flu jab every year. The flu jab is quick, safe and free. To book your jab, visit **Cromie Pharmacy.**

This is an NHS funded service 

158 Percy St, Amble 01665 710 896

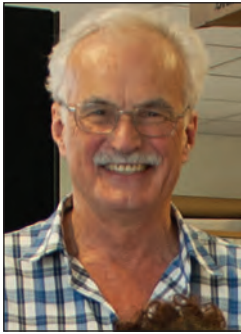
A fond farewell to a friend

We were greatly saddened to hear of the death of Tim Jones, a longtime friend and contributor to The Ambler.

Tim joined the Ambler team over 15 years ago, after retiring from his professional journalism career.

"He always encouraged us to show both sides of the story," said Ambler team member Norma Hinson. "He was always very diplomatic, he didn't like to upset anyone."

"He was always so encouraging and interested in everyone. He was a kind and gentle man, he always looked to people's better side, but he was also a realist," said The Ambler's editor Anna Williams.



Tim Jones

Tim loved the Northumbrian landscape and its people. He was an active church member and community volunteer, and was a board member of Amble Development Trust.

Vice Chair of Amble Development Trust Andy Sim said:

"We will miss Tim, he was a well respected, thoughtful and positive member of the Trust's management committee, and we send our condolences to his family."

Tim leaves a wife Rachel, and daughters Lucy and Tamsin. He had three grandchildren and one granddog.

The funeral will take place at 2pm on 9 October at St Cuthbert's Church, Amble.



TV star Penelope Keith with local historian Peter Regan

Warkworth will feature as one of Penelope Keith's Hidden Villages on television next January. Filming took place in August, when she met Peter Regan. The pair discussed Warkworth's history, how the village developed and why it looks like it does today.

Peter told The Ambler: "She was very interested and I enjoyed our conversation." Photo by Bart Rippon

Warkworth Book Fundraising update: Beryl Holmes, who is selling copies of a Warkworth guide book to raise money for Marie Curie has raised £6,584, very nearly her target of £6,584. See www.facebook.com/warkworthbook for all the details

Hauxley Fun Day: a classic village fete

Bart Rippon



Above: fun at the sandcastle competition, Below: music, dancing and the feat of strength



It is always great to see so many volunteers from all walks of life come together to transform the village of Low Hauxley for this one day spectacular. The wonderful summer weather on the day encouraged folks to turn up and take part in this classic village fete.

We would like to say a big thank you to all the local businesses that helped to make the event such a success by donating prizes, including Roland's Butchers, Lawrence's, The Fat Mermaid, The Amble Butcher, Jaspers Bistro, Spurrelli Boutique Ice cream and Bertram's Cafe in Warkworth.

The winner of the art raffle was delighted with her original painting of Coquet Island by local artist Jimmy Thompson, a long term supporter of the event.

This event is held each year to raise money for the Village Hall in Hauxley. The Village Hall is a registered charity set up to ensure provision and maintenance of the facility for use by residents of the area.



Hauxley Village Hall Committee

Judith Hardisty



Musical evening at St Cuthbert's

A Musical Evening in St Cuthbert's Church Hall, Dovecote Street on Saturday November 11 at 7.15pm for 7.30pm
A Miscellany of Music and Anecdote, Brian Jackson and Alan Edwards "If music be the food of love"

A wonderful evening of light, classical, folk and swing and stories from the world of music.

Fascinating entertainment, toe tapping fun, bar available and raffle.

Tickets on Sale from 1 October price £5 from N.E. Young Queen Street or ring 01665 798025.

<http://www.stcuthbertsonline.com/>

<http://www.warkworthdrama.org.uk>

Hauxley Chapel services

October	15	Local Arrangement.
October	22	Revd, John McDermott, Holy Communion.
October	29	Revd. Ian Farnsworth .
November	5	Revd. Keith Harbour.
November	12	Revd. Lynda Coulthard, Holy Communion, Remembrance Sunday.
November	19	Area Service 4.00pm @ Bedlington Trinity led by Revd. Dr. Carla Grosch-Miller to commemorate the ordination of Constance Colman Todd, one of the first women ordained to mainstream Christian Ministry.
November	26	Revd. John McDermott, Holy Communion.

We are a small ecumenical congregation who worship in Low Hauxley on Sundays at 4pm unless otherwise stated, followed by a cup of tea. All are welcome.

For further information please contact:

Revd. Lynda Coulthard, Trinity Methodist Church, Amble on 01665 713251,

Revd. John McDermott, St Cuthbert's Parish Church, Amble, on 01665 713727

Radcliffe Club Saturday night events

October 28	7pm Meatloaf and Cher Hallowe'en Tribute Entry £4.00
November 3	6-9pm Hallowe'en family night Free entry
November 25	7pm Top Hat 'n' Heels Christmas Show Entry £5.00

Camelot the Panto

A madcap twist on the legendary tale of Camelot, join Warkworth Drama Group on their take on this classic journey Panto style. King Uther wishes his son, Prince Arthur to marry the lovely Princess Guinevere and carry on the Pendragon name. However, Morgan Le Fay the scorned sorceress and the evil Valerin the Vicious have other plans to destroy Camelot and kidnap the Princess! It's up to Arthur with help from Dame Connie, Merlin, Laugalot the cowardly court jester and friends to thwart their evil deeds.

Can they be bold and brave and triumph?! Find out this December!

This action packed show is full of surprises, laughs and with lots of audience participation, you are invited to get involved with encouraging cheers at the sight of the goodies, loud boos when the baddies appear and wild applause throughout! Guaranteed to be a fun packed show for all the family, not to be missed!

Held in Warkworth Memorial Hall, on 7, 8, 9 December at 7:30pm with a Saturday Matinee at 2:30pm tickets: £7 adults £5 children (10% discount for groups of 10 people or more - postal applications only see website for more details)

Tickets available from: N&F Young, Warkworth Village Store or visit our website:- <http://www.warkworthdrama.org.uk/>

Adult learning courses

We have a course running in Amble which may be of interest. Early Years Educator - Diploma at Level 3.

Starting on 19 October 2017 from 13.00 - 16.00. A 78 week course fees of £2,570 (Advanced Learner Loan are available)

If you are prepared to travel further afield there are a number of courses offered which can be found online at:

www.northumberland.gov.uk/adultlearning

Calling all "crafty" people

If you enjoy making things, why not think about entering our Angel Festival in November. It's not too early to start thinking about a creative project featuring some kind of angel.

Your angel can be made out of any material: wood, wool, sugar, fabric, paper, metal, natural materials, anything you want to use.

It can be made by an individual or a group.

There are four categories: Adult Child (under 16 yrs.)

Adult group entry Children's group entry

Judging by people's vote.

In St. Cuthbert's Church, Church Street on November 19 in the afternoon (Christmas lights switch-on)

Lionheart Cleaning

Commercial & Domestic Cleaning Services

Your One Stop Cleaning Service Provider

Our ever expanding teams of fully trained and insured operatives are insured and able to carry out all of the following aspects of Domestic and Commercial cleaning for you, or your business.

Carpets and upholstery	Conservatory	Pressure washing
Windows	Roofs	End of Tenancy
Gutters/Fascias	Commercial	Post Build
	Kitchens	General

01665 713448 www.lionheartcleaning.co.uk

Sullivan Associates

CHARTERED BUILDING SURVEYORS

Offering professional property advice throughout Northumberland

Building Surveys, Defects Inspections

Plans drawn for extension and new build

Planning Applications, Building Regulations Approval

Disabled Access Advice, Party Wall and Boundary Matters

Design and Project Management

Tel: 01665 513010

Email: info@sullivan-associates.co.uk

Fourways 2 6 Dilston Terrace Amble Northumberland NE65 0DT

Wildlife Trust October events

Hauxley Wildlife Group: Little terns – why should we bother? Hauxley Wildlife Discovery Centre, Wed 11 Oct 7-8:30pm

Only £3 refreshments included. This is a Hauxley Wildlife Group event, exclusive to Northumberland Wildlife Trust members. Members may register for the group free of charge, simply visit us or call 01665 568 324 for more information.

Discovering the Birds of Druridge Bay, Druridge Bay, 18 Oct 9:30am-1:30pm

A 10 kilometre guided walk from Cresswell Pond to Hauxley Nature Reserve. Please book places online. Meet at Hauxley Wildlife Discovery Centre at 09:30 for transport down to Cresswell Pond.

£5 per person. Please book online.

A Beginners Guide To Astronomy, Hauxley Wildlife Discovery Centre, Sat 21 Oct 7pm - 8pm Sat 21 Oct 8pm - 9pm

Sat 28 Oct 9pm - 10pm

NASTRO (Northumberland Astronomical Society) invites you to come along and see what astronomy is all about. Enjoy a half hour presentation on the Northumberland night sky, followed by a look at the stars through the telescope in the observatory (weather permitting!). Wear clothing that is suitable for the conditions. Free but please book a place online.

Photography Workshop, Hauxley Wildlife Discovery Centre, Sun 22 Oct 10am - 4pm

1 day landscape photography tuition course Any level of experience welcome and any type of camera. £35 per person, please book places online.

Halloween at Hauxley, Hauxley Wildlife Discovery Centre, Tues 24 and Thurs 26 Oct 11am - 12:00pm & 1pm- 2pm

Activities for children aged 5 - 12. Drop in, £3 per child.

Creatures of the night, Hauxley Wildlife Discovery Centre car park, Tues 24 Oct – 7pm- 9pm Drop in £3 per person.

All our events with full details and booking are available at www.nwt.org.uk/whats-on

Please note that all children under 18 attending our events must be accompanied by an adult.

Kickboxing School gains more success

Congratulations go to local Amble Kickboxing School Instructor Adam White, (pictured on the right) who attend the WKA (World Kickboxing Association) English Open Championships. Adam who is the reigning 80k Sanda BCCMA National Champion entered three disciplines on the day, winning Gold in the K1 LC 80k championship, Gold in the Sport Boxing 80k and Bronze in the Points Fighting, giving Adam two English titles to go with his British title.

Adam is Chief Instructor at his school, Hybrid Kickboxing Amble. He said, "I need to try out different forms of Kickboxing to bring the knowledge back to the school which benefits the pupils".

A massive thanks go to Hybrid Kickboxing Amble sponsors: Richard Greenley (Joinery), TDL Autos, Kelly Construction, Sandee and Ti ME4 Nutrition. Without their support this club would not be possible.

Anyone wishing to take up the art of Kickboxing or just looking to get fit, or anyone who can help with sponsorship please contact Adam White direct 07545485955 or visit the old Boys Club on Tuesday or Thursday 6-8.



Killie Bridge re-opens



George Young, with Club Chairman John Gray, cutting the ribbon

The Killie gorge has been a feature of Warkworth Golf Course since it was laid out in 1892.

In 1971 members decided they had been walking round or through the gorge for long enough and resolved to build a bridge, which opened in 1972. This served members well for over 40 years. However, during a routine inspection many of the timbers were found to be rotten and half-way through a renovation much of it collapsed. Members once again were reduced to walking round or through the gorge. It was resolved to re-build the bridge.

Quotations from commercial firms were far beyond what the Club could afford, consequently members decided once again DIY was needed. Club member Michael Lucas drew up plans and greenkeeper Alan Dalby devised a strategy to construct it, keeping in mind health and safety regulations that have moved on greatly since 1972!.

In 2016 construction started with a team of volunteer members helping Alan. On August Bank Holiday the new bridge was officially opened by George Young, past-President and the Club's longest serving member.

As a comparison the 1972 bridge cost all of £84; the new one cost almost £12,000.

Halloween Ceilidh, all welcome

With the witching season approaching what better way to let your hair down on a Saturday night than at Amble Coastal Rowing Club's annual Ceilidh at Amble Parish Hall on October 28. Music is by Simply Northumbrian, all are welcome and no experience is necessary (getting it wrong is half the fun!!). With it being Halloween, please feel free to dress up if you'd like (a prize for the best) and equally if you'd rather not that's fine too. Arrangements are simple, a pooled supper... bring your own beer, wine etc... turn up, join in, listen to some live traditional music and dance. Doors open from 7pm.

Tickets £7 and are available from N&F Young, Queen Street or by contacting Amble Coastal Rowing club email :- info@ACRC.co.uk text/ call :- 07855766171 or contact via the club's facebook page :- Amble Coastal Rowing Club.

Lifeboat fundraisers' coffee mornings

Please come and join us at the Lifeboat Station for coffee and home baking on the following dates between 10.00am and 1.00pm

Sunday October 15

Sunday November 19

Sunday December 17

Amble Lifeboat Fundraisers

Bowls club news

The Northumberland ladies annual 2 wood Champion of Champions finals were held at Forest Hall Club and the winner was Emma Newton from Amble Bowling Club.

Emma defeated champions from Alnwick and Gosforth before beating the Forest Hall champion in the final. Emma is fairly new to the game of bowls, having only played a couple of seasons, so this is a remarkable feat, proving new young bowlers can compete and beat the best. Well done Emma, (pictured holding the trophy above right,) from all at the club.



Pictured right: Amble Bowling Club president Maisie Donkin presents a cheque for £150 to Trevor Colbourne, member of the Amble Christmas Lights Fund. The money was raised at the club's annual President's Day Competition where the Fund was nominated as the beneficiary.



Don't miss 'In at the Deep End'

An RNLI Story staged by the Mikron Theatre Company. **12 October 2017 at 7.30pm, Amble Lifeboat Station** "Skipwick RNLI is all at sea. Crew members are hard to come by and Coxswain Darren's management style isn't helping. So when seventeen year old Shannon volunteers, it's all hands on deck particularly for Darren's teenage son, Billy.

Can the station survive in this 'me first' age? Will eccentric fundraiser Hazel's ideas ever turn a profit? And can Darren and Billy chart the choppy emotional waters closer to home?"

Don't miss out. This promises to be a unique, funny show all staged upstairs in Amble Lifeboat Station. Tickets £13 (£11 conc)

Remembrance Day events

Royal British Legion

The branch Poppy Appeal will take place locally from 27 October until 11 November 2017

For orders or offers of help with collection please contact the organiser on 07785 753100

Remembrance Day services

Remembrance Sunday will be held on Sunday, 12 November 2017 with a service at St Lawrence's Church, Warkworth at 9am and afterwards at the war memorial in Dial Place.

At 11am a service will be held in Amble Town Square followed by a service at St Cuthbert's Church. The Amble branch of the Northumbria Army Cadets will lead the procession to the church.

Torchlight Procession and Xmas Lights

The Christmas Lights switch on and annual Torchlight Procession will take place on Sunday 19 November.

Santa has promised to join in the fun, and will be in the Seafood Centre from 4pm.

Children from Brambles will decorate the Christmas tree in the High Street garden at 4.30pm.

The procession will leave the Wellwood at 5pm and parade down Queen Street to the Town Square.

If anyone or any group would like to take part in the procession or workshops, contact Julia on 01665 712929 julia@ambledevelopmenttrust.org.uk.

"We would particularly ask anyone thinking of arriving in a large vehicle/tractor/etc to please let us know beforehand, so we



can assign them a safe place in the parade," said Julia.

The ever popular procession will leave the Wellwood at 5pm, moving down Queen Street to the Town Square.

Harbour Day total and thanks to all

AMBLE LIFEBOAT FUNDRAISERS would like to pass on their heartfelt thanks for the overwhelming community support received from the folk of Amble which resulted in Amble RNLI Harbour Day 2017 raising the

fantastic sum to date of £6,723.28 with more to come in!

A massive thank you to everyone; to each and every volunteer who helped on the day and weeks leading up to Harbour Day, to everyone who donated

prizes, cakes, bric a brac and books, 42 Queen Street for selling raffle tickets, Premier Store for being a drop-off point, Brian English for performing on the day, and especially our Lifeboat Crew, for the sterling work they

did on the day. Most importantly thank you to everyone who came along on the day to support Amble Harbour Day 2017.

Sharon Thorpe
Amble Lifeboat Fundraisers



NORTHUMBERLAND
Northumberland County Council

Councillor Terry Clark

will be holding surgeries on

Saturday 4 November

10am-11am in Amble Library

11.30am-12.30pm at Christ Church Hall Broomhill

1.30pm-2.30pm at Hauxley Village Hall

All Constituents Welcome

TELEPHONE ORDERS WELCOME
01665 710 442
MONDAY TO SATURDAY: 11.30AM-9.00PM SUNDAYS: 11.30AM-2.30PM
***** NORTHUMBERLAND COUNTY COUNCIL
1 BROOMHILL STREET AMBLE NORTHUMBERLAND NE65 0AN

Tour of Britain powers through Amble



Well wishing crowds cheered and clapped as the 2017 Tour of Britain race powered through Amble as part of Stage 2 of the race on 4 September.

The riders showed how much effort they were putting in as they climbed the Wynd, before curling around the Wellwood corner, then pushing on down Albert Street and out past the Industrial Estate. The breakaway group were followed a couple of minutes later by the peloton and dozens of support vehicles and police motorbikes.

Spectator Ethan Sales aged nine watched the race at the fish roundabout with his Grandad and Granny.

He said "We were there for ages. Some traffic was still driving on the road, so the

policeman had to chase after them. I was excited when I saw the riders come through Amble. I was cheering. The cars came through beeping their horns, one of the motorbikers were talking to the crowd and told them to cheer.

"There were about five cyclists went through first, and then about one minute 54 seconds later (my Grandad had a stopwatch), the rest of the cyclists came through. And that was it. I was glad I went to watch, even though it was all over quickly."

Stage 2 on 4 September saw the teams start in Kielder and end in Blyth, a distance of 211 km. A last minute controversy saw the Stage 2 win taken from declared winner Edvald Boasson

Above: Photo by Andrew Mounsey More on p6. Video on our website

Hagen of Team Dimension Data, and given to Italy's Elia Viviani of Team Sky. The judges cited 'irregular sprinting' by Boasson Hagen, as the reason for the overturned decision.

"I know that I closed in

Viviani but it wasn't on purpose" said Boasson Hagen after his relegation.

The race began on 3 September in Edinburgh and finished in Cardiff on 10 September.



Memorial football match for much loved teacher

A football match in memory of a much loved teacher was held at the Welfare in September. Football coach Josh Rutherford organised the event to remember David Coils, who died in August. Past students of the popular JCSC Design Technology teacher took part in the event. Cakes were baked too, and a grand total of £320 was raised for Macmillan Cancer.

"David Coils was a well respected teacher, who had time for every student and he liked football, so it was a fitting tribute," said Josh.



Above top row: Glen Chambers, Andy Flanighan, Mick Stewart, Arron Thompson, Alex Carruthers, Jamie Macpherson and Jordan Roper
Bottom Row: Ryan Pringle, Joseph Flanighan, Josh Rutherford, Daniel Moyle and Jason Morris

Left: cakes and refreshments on the day raised £320 Photos by Bart Rippon