



The Ambler

Amble's Community Newspaper

Issue 92 May/June 2015

Policing team propose office move

Amble Neighbourhood Policing Team are proposing a move to a new base in the town.

Plans are being considered to re-locate the Amble Neighbourhood Policing Team to an office on the upper-ground floor of Fourways 2 building at 6 Dilston Terrace, approximately 100 metres from Queen Street in the main shopping area.

The proposed re-location will include a front office facility for the public to visit and help to make officers more accessible, based closer to the main public areas in the town. It will also enable the force to make savings on the cost of maintaining older more expensive buildings.

Amble Police Station currently based on Leslie Drive is open from 9am to 5pm, Monday to Friday, and these opening hours will continue at the new location.

Now Northumbria Police is asking the community for their views on this proposed move. A display with information about the proposal is in the entrance to Fourways 2 building from April 22, to May 6. Residents are invited to look at the proposal and give any feedback by completing a comments card and putting it in the post box at the entrance to the office block which is open Monday to Friday from 9am to 5pm.

Northumbria Police and Crime Commissioner Vera Baird said: "We want to make sure local people have an accessible and visible police presence at the heart of their community so they can readily seek any advice and help they need from their local officers."

VE Day remembrance

To commemorate VE day, on Friday 8 May, a wreath will be laid at the war memorial in Amble Town Square at 3pm.

The beacon on the Braid will be lit at 9.32pm and bells will peal from St Cuthbert's at 11am on Saturday 9 May.

Harbourside retail development opens for business

The weather gods showed up for Amble Harbour Village's opening day, but, like the Vikings who had set up camp in the Town Square, they were vanquished by crowds of locals and visitors, who thronged to the new harbourside retail development.

"We were delighted with the turnout by local people and visitors. Despite the weather, we had a fantastic launch day and would like to thank everyone who helped to make it such a success," said Harbour Village co-ordinator Sarah Dunne.

Construction work has continued on the Harbour Village site since the launch day, and although there has been some disruption during these works, it has not stopped the visitors, or interest from new businesses. The existing 10 pod businesses have been trading and all 15 pods are now leased or reserved. The pods are selling a range of art, crafts, gifts, food and drink and the newest sign-ups will be adding to this mix of independent small businesses with cosmetics, bakery, textiles, and beverages.

Site works are due to be completely finished this month in plenty of time for Puffin Festival events. The main event during the Puffin Festival for



the Harbour Village will be the first 'Flying Fish Auctions' scheduled to take place on Friday 29 May (12 noon & 2.30pm).

Following the success of the launch day cookery displays, each auction will be followed by a cookery demonstration from Old Boat House Restaurant chef, Martin Charlton.

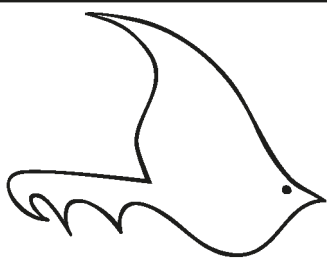
There will be other cookery displays from local chefs and a variety of art and craft activities going on throughout the rest of the Puffin Festival week.

More info on the Harbour Village can be found at www.ambleharbourvillage.co.uk

Top: All 15 retail pods are now leased or reserved.
Below: Discovering the diverse species of fish caught by Amble fishermen



The ribbon was cut by Cameron Scott of Northumberland County Council; Cookery demonstrations were popular



The Ambler

Fourways 2
6 Dilston Terrace
Northumberland NE65 0DT
Tel: 01665 712929
www.theambler.co.uk
editor@theambler.co.uk
Twitter: AmbleByTheSea
YouTube: AnnaAtTheAmbler1



Follow us on Facebook
Follow us on Pinterest

Editorial Team:

Justin Cooper - Vivienne Dalglish
Norma Hinson - Tim Jones
Lou Pickering - Cath Teasdale
Anna Williams

Thanks to:

Mark Beswick & The Artograffi Crew
Bartle Rippon

Printing:

Azure Printers, Pegswood

Would you like to join
The Ambler team? We are a friendly
group who welcome contributions
and help from anyone who would
like to volunteer.

Don't forget our subscriptions list.
If you would like a copy of
The Ambler delivered to a friend or
relative in this country or abroad,
just let us know.
Contact Anna for more information.

*Thanks to all our contributors,
sponsors and advertisers:*

Inner Wheel Club of
Amble and Warkworth

Rotary Club of Amble and Warkworth

Sir James Knott Trust

Northumberland County Council
Community Chest



*The Ambler is a project of
Amble Development Trust*

The views expressed in *The Ambler*
and *The Ambler Online* are not
necessarily those of
the Editorial Team

Printed on paper from sustainable
forestry in the UK

Tour de force

There could be good news on the horizon, with the prospect of dozens of jobs being created in Amble, as a new biomass firm takes over the old Holywell Engineering site on the Industrial Estate. We'll keep you posted!

Is the average age in Amble rising? Amble is home to two ladies who've reached the magnificent age of 100: Vi Smailes and Dorothy Dobson. Is it the Amble air? Although as Dorothy spent years in Australia, perhaps it's just good living. We hope to bring photos of their celebrations in the next issue.

At the other end of the age range, the Artograffers have been very busy, producing some thoughtful and interesting articles. The writers are mostly 10 years old. We hear so many complaints about young folk not being able to write properly. I think this proves them wrong.

Cycling is a popular subject this issue. On page 4 we discuss the use or otherwise of the cycle path. Page 7 introduces a visitor to Amble

with her dog and her bike, travelling the coast of Britain. And many more visitors and professional cyclists are due to pass through the town in September. See the article below.

As if there wasn't enough going on at Amble Harbour, the next few months sees a 'flying fish' auction in May (see p9) the Castles and Islands race in June and the start of a prestigious new yacht race, the Northumberland Plate Yacht race which takes place in July. See p 22.

Two groups are wanting your feedback; the local police are proposing a move to Fourways2 (See page1) and Northumberland County Council want to know how you feel about the car park on Turner Street being re-opened (p17).

Finally, let's hope for good weather at the end of May for our Puffin Festival and the very popular Colony music festival, showcasing talented local bands. Our back page has a list of activities, but check www.amblepuffinfest.co.uk for up-to-date information.

Tour de Britain cycle race to come through Amble



The biggest cycle race in the country will pass through Amble in September, as Northumberland hosts two stages of the prestigious Friends Life Tour of Britain.

This will be the first time Britain's national bike race has passed through the North East since 2009 and is a massive coup for the county.

The UK's largest professional cycle race is to be broadcast in over 130 countries, including live coverage on the ITV network, and will raise the profile of the county to an international audience.

Some of the world's top cyclists are expected to turn up to compete. Last year Sir Bradley Wiggins and Mark Cavendish were in the starting line-up and hopes are high that they will be competing again this year.

The eight stage race will take place from 6 to 13 September and will enter Northumberland from the Scottish borders on Wednesday 9 September during Stage Four.

Cyclists will head along a route from Wooler to Alnwick, and down the spectacular Northumberland coastline, by way of Amble, to finish in Blyth.

The next stage will be from Prudhoe following Hadrian's Wall, then cross the Pennines into Cumbria before ending on Hartside Fell.

Grant Davey, Leader of Northumberland County Council said; "A lot of work has taken place behind the scenes to bring this event to the county and we are proud and delighted that Northumberland will be hosting the Tour of Britain.

"It will give us a fantastic opportunity to showcase Northumberland, and all it has to offer, to an international audience. No amount of money could buy this sort of publicity.

"I'd like to publicly thank Northumbrian Water for their support in sponsoring the Northumberland leg of this event."

David Hall, Head of Leisure, Strategy and Transformation at Northumbrian Water said: "As a company we work hard to promote the North East as a great place to live, work and visit and the bike race is sure to boost regional tourism and the economy."

The event will also be featured on terrestrial TV, as ITV will screen three-hours of live coverage of every stage.

Who will get your vote on May 7th?

Yes, we are all aware that a general election is approaching.

We've been bombarded with leaflets and letters for weeks now.

Perhaps you just shove them in the bin, or maybe read them carefully and attentively, then say they all sound the same.

The trick is to pick out the

facts. Is the candidate telling you what they believe in or what they would like to do?

Generally, this is the best way to judge whether you want them to make decisions on your behalf, which is what the elected candidate will be doing.

So it is your responsibility to vote. 'They're all the same', is

usually the excuse for not voting. If they were all the same, they'd be saying the same things rather than arguing.

Can we complain about what our MP is doing, or not doing, if we didn't take the chance to listen to the candidates and choose the one whose ideas seemed to be closest to our own?

Some people seem to think that not voting gives them some sort of superior position. In our opinion, not really - it just suggests that they can't be bothered.

Just remember that somebody will be elected. Are you going to leave it to others to decide who it will be?



Conservative candidate Anne-Marie Trevelyan met residents of Dolphin View care home. She is pictured here with James Aston.



LibDem candidate Julie Pörksen, with Ian Lewis, owner of new biomass company GP Power, opening soon on Amble Industrial Estate.



UKIP candidate Nigel Coghill-Marshall (r) met business owners at Amble Harbour Village. He is pictured here with Richard Wardman, co-owner of Blue Pod and 42 Queen St.



Labour Party candidate Scott Dickinson (l) with Mark Burdon, co-owner of Cromie's Pharmacy.



Green Party candidate Rachael Roberts (r) talked with local fishermen. Here she is with local Green party supporter Johanna Rackham.

Our candidates are:

Anne-Marie Trevelyan (Con)

Julie Pörksen (LibDem)

Nigel Coghill-Marshall (UKIP)

Scott Dickinson (Lab)

Rachael Roberts (Green)

Neil Humphrey (English Democrats)



English Democrats candidate Neil Humphrey

Why are people ignoring the cycle path?

Cyclists coming into Amble are risking an accident say local road users.

Despite a cycle path and footpath running alongside the main road between Amble and Warkworth, cyclists are opting to use the road itself, causing concern that an accident will occur.

"Anything wrong with the great big cycle path? Morons" tweeted Aaron Martin, who works in Warkworth and recently witnessed traffic having to overtake cyclists on the busy stretch of the A1068 known as Rotary Way.

Aaron, who was travelling on the top deck of a bus, posted a photograph of three cyclists being overtaken by a line of cars. The adjacent cycle lane and footpath was empty.

But cyclists claim the cycle path is dangerous. "Because there are steep hills at each end of that road, you get up a big speed," claimed one cyclist who didn't wish to be named. "To join the cycle path at the bottom of Beal Bank, you have to swerve off the main road."

Another cyclist claimed that sharing the path with walkers, families and dogs was potentially quite dangerous.

"As a leisure cyclist, I am happy to use the cycle path because I can make allowances for walkers using the path, but many cyclists these days are out on a mission and it would be dangerous to encounter pedestrians at the speeds they travel," said local cyclist Vivienne Dalglish.

"I enjoy the safety of the cycle path. I ride up Beal Bank on the cycle path because I usually wobble near the top and cars don't always give you a lot of room, but I wouldn't

dream of free-wheeling down Beal Bank on the cycle path, it is very narrow, there is often debris on it and you certainly wouldn't want to encounter a pedestrian; in my opinion to do that isn't safe," she said.

And cycling enthusiast Mark Breeze pointed out that cycle lanes are not mandatory.

"Just because there is a path doesn't mean that we have to use it. It's funny how aggressive everyone gets about it. I have been shouted at by motorists and walkers. It seems that as cyclists we can't win."

Mark, who owns Breeze Bikes shop in Amble was also critical of some drivers' attitude to cyclists.

"I spend six days a week riding my bike but most motorists think it's because I can't afford a car! If they have to hesitate for ten seconds to change down a gear, then pass me at a safe distance, that's not too much to ask."

"I have ridden my bike all over Europe, and the UK is by far the worst for sharing/respecting other road users."

Despite this, Mark wants to encourage people to cycle more.

"Anything that gets people on their bikes and out of their cars for short journeys is a good thing! The cycle path between Warkworth and Amble is great. Separated from the road, smooth tarmac, no glass, no thorns and lovely views."

"The problem that exists is the fact it's a shared path. If I go out with the family for a bike ride to Alnmouth we would without doubt use the cycle path. When we are riding along the path we would be traveling at 10-



Why do cyclists still prefer to use the road?

12 mph and taking time to enjoy the views.

"On the other hand if I go out on my road bike I would not use the path. Mainly because I am traveling far faster (20+mph) so passing a walker on a narrow path at that sort of speed would cause a problem. It's also a question of access on and off the path."

"If I go down the Wynd, then have to stop to cross the road, then do the same at the other end, I am putting myself at more risk. It's far easier and safer to stay on the road and go with the flow of the traffic."

The coastal road linking Amble to Warkworth and Alnmouth is part of Sustrans' national cycle network Route 1, which has been the subject of a series of complaints in recent months, with Northumberland County Council refuting allegations that the surfaces of some of the paths are too gritty for cyclists.

Anna Williams

JCSC construction students to get valuable experience



(L-R) Jordon Stevens, Callum Boite, Will Foster, Brandon Scott, Matthew Helliwell, Chris Aston and Mark Willey from JCSC with Gavin Morgan from Galliford Try Partnerships North.

Construction company Galliford Try has teamed up with James Calvert Spence College to provide work placements for six students.

Galliford Try Partnerships North, who are based in Newcastle, will work with the students – aged between 16 and 17 years

old – who are studying for a B Tec level 2 in Construction.

The placements at the town's Dandsfield Square development, will enable them to gather information in support of their coursework, while experiencing life on a building site at first hand.

The qualification will also provide these young people with a basis from which they can pursue careers in the construction industry.

Stephen Thompson, Head of Faculty at James Calvert Spence College said: "This is an excellent opportunity for our students, who will no doubt gain much experience from the placements."

"Galliford Try already hosted a half day visit which helped them to build on their knowledge and understanding of how a building evolves during the construction process. This experience proved invaluable when questions about this appeared on a recent exam paper".

The developer is working in partnership with Homes for Northumberland and Northumberland County Council to deliver 48 new affordable houses, bungalows and apartments on previously disused land next to Dandsfield Square.

Galliford Try is also holding a workshop and site visit with A-level students from James Calvert Spence College to discuss the further education options available to those working towards careers in disciplines such as architecture, surveying, design co-ordination or estimating.

Litter bugs move into Amble

Litter is always an emotive subject, but there can be little doubt that there has been an increase in the amount of rubbish blowing around our nooks and crannies.

The Ambler is asking readers to help stop this slide into neglect with a KEEP AMBLE TIDY campaign.

But here's the thing. After decades of national 'Keep Britain Tidy' campaigns, why are we still dropping litter? Why are we still too lazy to 'Bag it and Bin it'? Why do people still drop cigarettes and food packaging?

But let's be fair, this is not an attack on kids or 'drive thru' fast food addicts. The amount of rubbish strewn around paths and hedges, in Amble and much further afield, is way beyond being the fault of a few selfish

individuals. Anyone who has recently travelled to Newcastle via either the A1 or spine road, surely will have seen the hedges and verges strewn with plastic, paper and general rubbish.

A spokesperson for Northumberland County Council said "In Amble we have introduced a regular mechanical footpath sweeper which is an increase in service on previous years. There is a team based in the town which carries out a range of street cleansing and grounds maintenance activities.

"On the A1 and all main trunk roads through Northumberland, we are pulling a programme of works together for clearance. So far we have cleared over 20 tonnes of litter and will be working through the season to remove even more."

The council say they urge people who have issues with litter to get in touch with them, so they can take action.

In some places in the UK you can be issued an on-the-spot fine for littering – even for dropping cigarette stubs. Is this the way forward?

"Tackling litter is a priority for the council. Those that are caught dropping litter will also face action – we've already taken a number of people to court this year and won't hesitate to target the small minority who have no respect for the county," said the spokesperson.

We know litter is a subject which annoys a lot of our readers, so we are asking you to help us start a KEEP AMBLE TIDY campaign. We'd like to encourage everyone; schools, offices, community groups, sports teams, friends and neighbours. Please let's make the Friendliest Port the Tidiest port.

Amble Town Council are holding a Community Cleanup on May 20. You can pick up



litter-picking equipment from Fourways2 at any time between 10am and 3pm, or meet in the Town Square at 5pm for about an hour's litterpick.

And as a final request, what is the best way of confronting someone who has just dropped litter?

Send your thoughts to editor@theambler.co.uk or join in the conversation on Facebook.

Anna Williams

A song, a petition and a walk to save Druridge

More than 50 people of all ages (and a good few dogs) took part as extras in a new pop video for Amble singer songwriter, Brian English.

Garage worker Brian has penned a song about Druridge Bay on behalf of the Save Druridge group and put out a call for volunteers, who care about opposing opencast in the area, to join as extras.

"The turn out was fantastic, locals have really got behind me to star in the video but also express their concerns about an opencast site so near to the bay itself," said Brian.

The proposed scheme will see mining operations taking place for around eight to ten years with a further five years' restoration period. It is anticipated that approximately



The Save Druridge campaigners are holding a walk from Cresswell bus stop to Druridge Farm starting at 11am on 3 May. For more info and a link to their petition, see www.savedruridge.co.uk or email savedruridge@btinternet.com

five million tonnes will be mined in an area very close to Widdrington Village, Widdrington Station, Cresswell and Druridge Bay itself.

Chairman of the Save Druridge campaign, John Smillie was delighted with the support received. "For 50 people to come out on such a cold, windy

and rainy day shows the level of support we have. People have had too much opencast over the years and now it's time we said enough is enough. We're looking forward to making the video our battle cry as we continue to oppose the development."

The ex-drummer of Geordie legend Lindisfarne has also hit out at plans for the opencast mine. Ray Laidlaw gave his backing to the Save Druridge campaign by signing the petition to stop the proposed scheme.

The song "Druridge" has already generated more than 1800 hits on Brian's Facebook page and local photographer Andrew Bryson recorded the professional video of the song.

See the video: youtu.be/qzRKa_EcFXc

Lionheart Cleaning

Commercial & Domestic Cleaning Services

Your One Stop Cleaning Service Provider

Our ever expanding teams of fully trained and insured operatives are insured and able to carry out all of the following aspects of Domestic and Commercial cleaning for you, or your business.

Carpets and upholstery	Conservatory	Pressure washing
Windows	Roofs	End of Tenancy
Gutters/Fascias	Commercial	Post Build
	Kitchens	General

01665 713448 www.lionheartcleaning.co.uk



Amble Chiropody & Podiatry Clinic

Comprehensive Professional Footcare

Helen Bradwell BSc, MChS

Open Mondays and Fridays

For appointments telephone 01665 710 444

or for more information visit

www.amblechiropody.co.uk

14 Albert Street, Amble NE65 0LT (opposite The Wellwood)

WHAT YOU SAY...

Let's think differently

In regard to the recent articles and comments about the withdrawal of Tesco, I have some questions.

1. Why do the covenants in place insist a supermarket should not be built on the Industrial Estate. What are the main reasons?
2. If these reasons are no longer valid, can these covenants be changed?
3. Has anyone taken the time to talk to the residents who live near the Braid and ask what vision they have for that land?

There are times when we take things for granted and don't realise what is special in our lives until it is gone, then it is too late. The reason I feel so strongly about this is:

I was born and lived in an industrial part of Britain for many years. Where villages and towns developed and progressed in such a way that they merged together, becoming suburbs of the big city, almost losing their identity along the way. Where nature was rows of trees in a landscape of paving slabs.

I have now lived in Northumberland for 26 years, the last seven have been in Amble. I love living here and can't imagine living in a city or big built up town. I couldn't breathe.

Yes I know we shouldn't stagnate. Towns need to develop, move forward, progress, encourage fresh ideas. But NOT with a quick fix, let's make money now and who cares about consequences or who cares about future generations attitude!

Can we not enhance this part of Amble? Make it into something we can all be proud of? Something that can show off Amble at its best.

For example, could part of the land be made into gardens for the residents who live so close to the Braid? While in another section, a sensory Garden of Memories. Somewhere that would preserve our plant and wildlife for everyone to appreciate?

Let us step back and think of new ideas, new ways. Why do we have to be the same as everyone else? Let's think differently Amble and do something unique!

Regards from a non-car driver, minimum wage earner, Amble resident.

Name supplied via email

The Ambler understands that:

- 1). Covenants are not the problem, but official planning regulations. The land is zoned for industrial buildings only.
- 2). Parts of the Industrial Estate are owned by different people. Most of the land and units are classified as non retail. If the land owner wants to change the classification, they would have to persuade the County Council of the need for change - and, of course there would be a charge (per sq ft).

3). The land south of the Gut, known as Braid Hill, was initially several different parcels of land, which were bought up by Northumberland Estates. They secured outline planning permission for a supermarket and housing, then sold the land to Tesco. Residents were invited by the planners to give their views when Tesco first submitted detailed plans. There have also been numerous public meetings. The land is still owned by Tesco and is currently up for sale.

The majority of the Braid has been designated 'Village Green' status and is in fact under Warkworth Parish Council's jurisdiction.

Ed.

Memorials on trees should stay

I am working hard to keep the items at the trees (at the bottom of the Wynd). Although I am not related to any of the families in question, I've been told by two of the families to carry on with this good cause and not allow anybody to take them down.

I am currently waiting to hear the results from my petition, emails and other resources.

I know for a fact that all of this has caused a lot of upset for the families involved and it brings back all the bad memories of their dark days.

Also it would have been a kinder thing, to do, to contact each family in question and inform them and ask what they think. instead of letting them read it in a paper or online. This is unforgivable.

Ami Casson via email

Garden waste thrown on footpath



Spring is on its way, and the footpath running between the West Cemetery and New Hall Farm is drying out, and it is now nice to be able to walk down to the town without welly boots. Unfortunately there are two properties on Robsons Way, numbers 26 and 29, using the path as a refuse tip for their garden rubbish. We are able to have a brown bin for garden rubbish at a very minimal cost, collected twice monthly.

As a pensioner I really do feel that I could save that amount by just putting my rubbish over the fence, as the culprits do. I understand they have been told not to do it, but to no avail and on they go.

Name and address withheld

More traffic wardens needed

It is way past time that the land to the rear of Tesco was opened up again as a car park. Instead of a four hour stay being permitted I would suggest a two hour stay. As a disabled driver, could I suggest MORE traffic wardens for Amble?

When the wardens are around it makes Queen Street more accessible.

The new landscaped area opposite Spurelli's. Can anyone tell me why it wasn't used to provide more car parking spaces? Yes, it looks very nice but there is an ongoing cost to maintaining it. More parking spaces would have provided a much needed resource at a far cheaper cost and a lot cheaper ongoing maintenance.

And, KEEP THE ONE WAY SYSTEM,

Frank Swinhoe via email

Save the Memories walk

This year we are doing another Coastal Walk along the Northumberland Coast Path to raise funds through Save the Memories for the Alzheimer's Society and The Blooming Well Project. These offer activities for people with memory loss. Details can be found on www.facebook.com/events/917755544903329/

Walkers can be sponsored here: www.sponsorme.co.uk/gemmalittle/save-the-memories-coastal-walk.aspx

Thank you to Amble for all of your support past and present!!

Gemma Little via Facebook

We welcome your letters, email, Facebook and Twitter comments for publication.

Your name and address must be supplied, but will be withheld on request. Letters may be edited. Contact details on page2.

One woman and her dog

In March, Maggie Scorer started a 5,000 mile bike ride from Aldeburgh, Suffolk, cycling anti-clockwise around the coast of Great Britain

This 65 year old mother and grandmother already has a busy life. A landscape gardener, B&B owner and ferry(wo)man, Maggie still finds time to potter about on her sailing boat and compete in weekly races at the local yacht club.

Having watched Sport Relief and seen the amazing challenges in aid of charity, it made her think and so this idea was hatched. She chose two charities both with personal connections - LLR (Leukaemia and Lymphoma Research) and Sands (Stillbirth and Neonatal Deaths).

Maggie had already sailed around Britain and seen the coastline from the sea, so she thought how wonderful it would

be to see the sea from the land. So with her loyal companion Oscar the Golden Retriever, who has been with her on many adventures, she set off on her bicycle with Oscar in a dog trailer.

Maggie and Oscar passed through Amble on Easter Saturday, getting confused by the one way system in Leazes Street, but she needn't have worried: bicycles are allowed to go both ways along there.

Based on travelling 30 miles a day she is hoping to be back in Aldeburgh by the end of August. The whole trip should take her about five months.

You can see lots of photos on the Dog on Tour Facebook page, and donations can be made at www.uk.virginmoneygiving.com/MaggieScorer

Vivienne Dalglish



Free music festival confirms two chart-topping headliners



A fantastic day of free family entertainment returns for its second year at Blyth beach, with two chart-topping headline acts.

Chart-toppers Toploader (left) and Doctor and The Medics (below) will headline this year's festival.

The festival takes place at the Mermaid car park from noon till 9pm on Saturday 27 June 2015.

Local bands will also share the bill and a talent contest will be launched offering musicians from Northumberland a chance to perform on the big stage.



True Story My life so far

Mother and father had
A very large brood
Too much expense for
clothing and food.
Brothers and sisters fostered
out
For years we moved about
Never knowing the bond we
had.

Then one day much by
chance
A brother I found in
Nearby town not far from
me
My life turned from sorrow
to glee.

We met, shook hands and
cried
At last God was on our side.
Years of sadness washed
away
As one family we're going
to stay.

Norman Clay
Dolphin Court, Amble

Sullivan Associates

CHARTERED BUILDING SURVEYORS

Offering professional property advice throughout Northumberland

Building Surveys, Defects Inspections
Plans drawn for extension and new build
Planning Applications, Building Regulations Approval
Disabled Access Advice, Party Wall and Boundary Matters
Design and Project Management

Tel: 01665 513010

Email: info@sullivan-associates.co.uk

Fourways 2 6 Dilston Terrace Amble Northumberland NE65 0DT



Unit 6, Coquet Enterprise Park, Amble NE65 0PE

01665 713 448 07790 596 782

www.pedal-power.co.uk bookings@pedal-power.co.uk

Reprint of popular Warkworth book

Reprinted to raise funds and to recognise the invaluable support of Marie Curie Cancer Care (www.mariecurie.org.uk), Ian Smith's very popular guide to Warkworth will appeal to anyone who knows, or is to discover, this delightful village.

At only £3 with all proceeds to Marie Curie, the book makes an ideal pocket guide or a welcome gift.

Please come and support us on 8th May at Gray's Warkworth when there is also an opportunity to enter a silent auction for a watercolour of the castle and river by the Berwick artist Fred Stott.

For all enquiries please contact the publisher Beryl Holmes at book.holmes@gmail.com



Local 25 year-old heading to New York to compete in sports tournament

Aaron Oliver, from Warkworth, is heading to New York in August this year to take part in an international men's roller derby tournament with his team Tyne and Fear, who are currently 3rd in Europe and 13th in the world.

Roller derby is a fast, exciting, full contact sport played on roller skates, on an oval track. Roller derby games are held at Tyne and Fear's practice ground, the Walker Activity Dome.

The team will travel to New York for the tournament which is on the weekend of 8 August.

Aaron said: "It's such an honour to be playing in the tournament at a world class level, but now the hard work really begins to make sure we're ready for it. That includes trying to raise funds to get over to America. It'll be an expensive trip with flights, accommodation and food. With it being DIY sport we do everything ourselves".



Aaron Oliver



The Tyne and Fear team began in 2011 and are now ranked 13th in the world

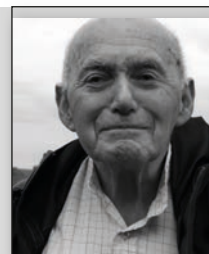
"The team and individuals are looking for sponsorship opportunities, so if anybody is interested in helping us get over to the States we'd love to talk to them."

If you would like to help the team or Aaron fund the trip, you can get in touch with him at PEC furniture on 01665 710593 or www.tyneandfear.co.uk; <https://www.facebook.com/tyneandfear>

And the gofundme page www.gofundme.com/blockbeard

Age of insecurity

Harry McQuillan



A conversation with a very able and experienced primary school teacher got me thinking about schools and values.

A meeting of primary heads in a county that will remain nameless, led to a discussion of resources. A new head of what had been a good school (now no longer in that category) pointed out experienced teachers cost a lot of money. This would lead to having more money to spend on other resources. She had ensured that a number of her experienced staff retired or resigned, leaving money to buy things that were otherwise unaffordable.

A recent Radio 4 discussion on prospects for artificial intelligence, and its effects on middle class jobs, concluded that there would be a 'hollowing out' of the middle classes. Lawyers, accountants, doctors, teachers, etc. would find that most of their work was being done by ever more sophisticated computers. But when most of us want advice we turn to a PERSON who knows what they're talking about.

The same radio article pointed out that there would still be many more PRACTICAL jobs. At the same time there would be rich rewards for the IT boffins!

What sort of world will our grandchildren live in? Perhaps we just can't see that far ahead. One thing is certain: change will come, and people will have to work together to manage it. Of course our lives won't change that quickly and the direction of travel is unclear. Security comes from having a life in which we have somewhere to live, enough money for our REAL needs, things to do that we enjoy, and people that we relate to (especially the PEOPLE)

I come back to my constant theme, expressed so beautifully by John Donne, one of our greatest poets: "No man is an island"

My knowledge of IT is very limited. But some aspects of our computerised world give me cause for concern. I see so many parents using their electronic gadgets when they should be TALKING to their bairns. I heard of a "touch screen" youngster in a nursery rubbing a finger on the inside of a window, hoping to produce a new image.

Where will it all end?

Harry McQuillan

Children Experience Easter

As last year all the children in Amble's two First Schools were invited to come to hear the Easter story from Palm Sunday to the Resurrection. In all, 220 children attended. Six tableaux were set up in church telling a different part of the story. At each was a storyteller dressed in the costume of the time so that the children could imagine themselves in the story.

The children visited the first five tableaux in small groups and then visited the last one together to hear the happy ending of the resurrection.

All the children seemed to enjoy the experience and joined in the activities which were part of each tableau. The storytellers also had a good and satisfying time sharing the story with the children. We all felt that we had ourselves gained from being part of the action. Thanks must go to Penny Horseman for organising the whole experience.

The exhibition of the tableaux stayed in place until Easter Sunday so that all could visit and experience the story as the young pupils had done.

Peter Cordingley on behalf of the storytellers and other helpers at St Cuthbert's church



Darryn Wade: www.darrynwadephotography.com; www.facebook.com/darrynwadephotography



Amy Baston



Vivienne Dalglish



Eclipse from Coquet Island by Wez Davies

"The eclipse on March 20 was in my diary, though I hadn't invested in any safety gear to protect my eyes," said Vivienne Dalglish.

"However the situation was saved by a layer of cloud. There wasn't enough to obscure the spectacle, but there was enough to reduce the glare. I had my digital camera and standing on my front doorstep I got some reasonable images.

The advantage of the digital camera was that I had the opportunity to review my images as I went along and got the best

results by reducing the aperture right down to cut down the light."

"I hadn't intended photographing the eclipse at all," said Darryn Wade. "I looked out the window at 9.33am to see quite a gloomy light and eventually clicked on!!

Luckily, it was possible, due to the cloud cover, to look at it with the naked eye, so I put my long lens on and snapped off one shot then went for a coffee! I'm quite glad I got to see it, and ironically all thanks to the cloud cover. Otherwise, there's no way I'd have pointed my lens or my eyes at it!"



FLYING FISH AUCTION

FRIDAY 29TH MAY 2015 THE SEAFOOD CENTRE

(LEAZES ST, AMBLE, NE65 0FD)

1ST AUCTION

12 MIDDAY

2ND AUCTION

2.30PM



SEAFOOD COOKERY DISPLAYS BY A LOCAL CHEF FOLLOWING EACH AUCTION.

EVERYONE WELCOME. FREE ENTRY. COME TO BUY OR JUST FOR FUN!

Find out more at www.ambleharbourvillage.co.uk










NOW OPEN EVERY SATURDAY 9-5pm

New Kodak photo kiosk

Print your photos from any memory card or mobile phone including iPhone and Android.

You can also print your photos direct from any social media site including facebook and twitter.



158 Percy St, Amble 01665 710 896

⁷NORTHUMBRIAN
Cottages

For the happy holiday home owner...

Based in the heart of Northumberland, we're one of the UK's leading regional holiday home agencies.



Local High Street Office in Alnwick

HASSLE FREE property management services

Personal service from locally based Regional Manager, Wendy Jennings

Want to know more?

For expert letting advice call Wendy on

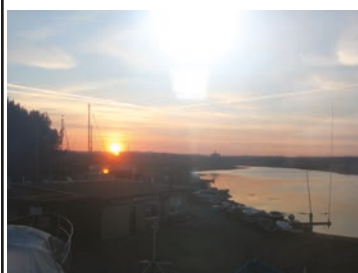
07767 345274

Alternatively, email Wendy.Jennings@wynvr.co.uk



COQUET YACHT CLUB

News update



The club membership is growing with more and more local members. "We never knew you existed!" is often the cry. The new balcony and river lounge are attracting more visitors and the evening sunset view of Warkworth Castle from the River Lounge at this time of year is staggering. The club has bought a powerful club launch, "Armored", which will be used as a race officer's boat and allow qualified club members to have leisure trips.

It will also be used for RYA power boat courses. The RYA "pre-inspection" went well and the club moves forward with its efforts for full RYA Training School recognition.

For three days, May 23-25 (start of the Puffin festival) the club will be having a "mini beer festival". Entrance is £5.00. For this each customer will get a CYC etched tulip beer glass and 2 tokens for their first two drinks. Additional tokens can be purchased for £1.50.

The VIP brewery from Alnwick will be supplying most of the real ale with lagers and ciders. Opening hours for the beer festival will be noon to 10pm. There

will be a BBQ and stalls associated with the club's activities. Profits will go to the RNLI and CYC. The Clubs prestigious event "Castles and Islands Challenge" takes place June 20 and 21. This event involves runners and sailors taking in the Castles of Alnwick, Warkworth, Holy Island, Farne Islands, Bamburgh, Dunstanburgh and back to Amble.

Competitors have to complete the 39 miles running and sailing in 24 hours. A great event always finished off with a great night in the club house. Coquet Yacht Club and The Royal Northumberland Yacht Club will be hosting the first Northumberland Plate Yacht race which will be starting at 9am Saturday 18 July with the start line just off the Amble Harbour entrance. Like the Olympics, spectators will be able to watch 30 to 50 yachts start the race from Amble quayside.

For more information about membership, the club or information about having your function by the river with fabulous views contact Phil Derry on 07710 423550 or phil.derry@coquetyachtclub.org.uk



Book your
table online
today!

the old STOREHOUSE

AT AMBLE

Bar & Restaurant



Home of delicious, locally sourced, fresh food

Situated just a short walk from Amble's quaint harbour and stunning sand dunes, you'll find The Old Storehouse Bar and Restaurant. Having built great relationships with our partners, you can be assured that the food on your plate has been sourced from the best suppliers Northumberland has to offer.

Whether you're looking for a bite to eat, a tempting afternoon tea or somewhere to celebrate a special occasion, we're sure your time in Amble will be one to remember.

Did you know... we're open 7 days a week • Dogs are welcome • You can book online • We have a wide variety of upcoming events • We're on Trip Advisor so you can let us know what you think.

To view our current menu and book your table visit theoldstorehouseamble.co.uk

☎ 01665 710 500 TheOldStorehouseAmble @oldstorehouse



BINKY'S easter PARADE

'Binky is a young panda who gets up to an awful lot of trouble!'

Binky slipped on his bunny onezie and did a few practice hops. Today was the annual Easter bunny parade and he had been chosen to help keep the bunnies in line.

When he got to the bunny reserve he realized he was very early, so he decided to say hello to the bunnies that he was going to lead. Binky opened a cage door and an especially cute, white bunny hopped up to him.

"Aaawwww!" cooed Binky, giving him a hug. But while his back was turned, a brown rabbit hopped out onto the grass. Binky gasped and tried to chase it, but the bunny in his arms hopped away too. Binky then remembered, while trying to catch the pesky pets, the cage door was open! He turned around to see loads of rabbits everywhere, how would he round them up in time!?

Then Binky heard a sound like big bunny feet. He turned around to see a big, pink bunny with a yellow bow round his neck. All the bunnies seemed transfixed and followed the rabbit into the cage. When they were all in, the Easter bunny shut the door, winked at Binky and hopped off before the panda could say 'thanks'.

The bunny parade was great. The bunnies seemed still transfixed and kept in line for the whole way and everyone agreed that it was the best parade ever.

Especially the Easter bunny, secretly watching from in a bush!

By Lily

WHO HAS THE BEST DAD?



Fathers day is a relaxing day for the dads. This year Fathers Day is on Sunday 21 June.

Here is a picture of a great dad. He dressed up as Elsa from Frozen, whilst his daughter dressed up as Olaf also from Frozen. Some people have said he is Dad of the year

I think my dad is Dad of the year. I love him very much. I think we all know what fathers like (vodka and beer)

By: Freya Mathews

WHY GEOCACHING IS SO MUCH FUN

Geocaching is lots of fun and it's funky, it's like a treasure hunt. You will need your phone [or g.p.s].

You get an app on your phone and choose an area to play the game and find the hidden treasure.

The treasure comes in all different shapes and sizes. People hide small things like toys, but not food. Some are in metal or plastic containers. They are hidden in secret places. They are all over the world England, France, Italy, even Amble! The first time we tried we were rubbish, but now we are really good.

By Joshua Curtis



MY VISIT TO THE LIFE CENTRE

My friends and I went to the Life Centre in Newcastle. It was sooo fun!!!

First we went to the curiosity zone where there are lots of activities. Then we met a real scientist, he showed us real experiments.



We went to a place where there were even more activities, but about bones and things like that.

Then we saw a movie about

space, which made me and my friend Grace laugh our heads off for some reason!!! Afterwards, we built a circuit, it was really fun

The very last activity we went on was the 4D ride. Funnily my glasses fell off just a few minutes before it ended, so I had to get Elaine's glasses (she was a helper).

By Freya Mathews

MY SPRING BUCKET LIST



We went to deliver the money and

This is a guide for a bucket list of what to do in May and June.

- Go to the Amble puffin festival
- Go to the beach
- Bike or scooter rides
- Go to the park

- Plant a garden
- Star gaze
- S'mores (biscuit and melted marshmallows)
- Bake
- Water gun fight
- Movies
- Watch sunset

- Camp
- Dance in the rain
- Make ice cream
- Hang out with friends
- Shop
- Decorate things
- Have a sleepover
- Go on a hike

These are just some of the things you could do in the spring and summer whatever just do something to stop you from being bored.

By Hope



JOSH meets a sea mouse



I went to the Harbour Village opening. It was lots of fun.

There were lots of things like a sweet shop, butchers, pottery painting, scarf shop, the Mad Jam Woman and the P Pod. There were trails and some singing around a boat. At the sweet shop there was puffin poo!

You could hold some fish at the sea food centre. I held a sea mouse! It felt slimy and hairy and weird! Then I prepared some crab claws. I used a knife and a hammer I got the hammer and bashed the crab claw. It was lots of fun but I didn't like the taste.

By Joshua Curtis



INTERNATIONAL Women's Day

In March it was International Women's Day - a celebration of women's achievements through history.

Around the world the day was marked with parades, speeches and special events. But the day is also an opportunity to highlight the work that still needs to be done to make men and women truly equal. There are lots of inspirational women in sports, singers, actors, dancers, family, friends, You Tubers. People who stand up for women and themselves, scientists, teachers etc.

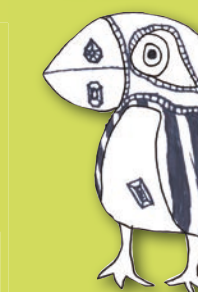
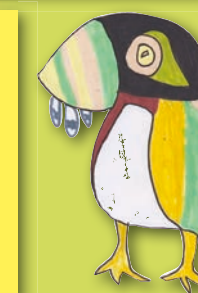
Lily is inspired by Kim who runs the nature sanctuary. Romy likes Selena Gomez. Anna likes Michelle Obama.

By Hope

nanny LYN IS MY INSPIRATION

My nanny Lyn is my inspiration. She's kind, helpful and she's there when I need her. I love to go and see her when I can because I have a great grandma and she's got Alzheimer's and she's blind in one eye so it's kind of hard for her to come and see me because she lives in Broomhill I love her and will never stop.

By Romy Byrne



How to set up your own business

Now, if I had a pound for every time someone has come up to me and said 'Bruce, I have a cracking business idea' but didn't do anything about it, I would have more pounds than a till at Poundland!

It's often the fact that people just don't know what to do next that stops them. So, as a basic guide, here are some steps I followed when setting up my new business Bobby Dazzler Oven & Carpet Cleaning. Hopefully it could help someone who wants to set up on their own, but doesn't know how to do it.

1. Understand why you want to do it and what you want out of it. If you clarify this and your ultimate aim, this helps you fully understand if it's achievable. 'I want to run my own cookie shop as I want to be my own boss and want 12 holidays a year and a corporate box at St James' Park'. Awesome, you want to be your own boss (the why) but 12 holidays a year and a box at 'the toon'? You will need to sell a heck of a lot of cookies just to cover the rent, so it's probably not going to be achievable. If it's not realistically achievable, stop, think of something else and waste no more money.

2. Will you love doing the job? Go and do it for someone else, do it for free. Do you wake up each morning thinking 'shh-TING! Yes? It could be for you! No? Look at why. Can you change anything? If not, stop, think of something else. You are choosing this job,

it shouldn't feel like a prison sentence. For me, I love seeing the difference between ovens, carpets and settees when I arrive and leave. Because I love this aspect, it makes me good at my job, which makes my clients happy!

3. Who else is doing it and how can you do it differently/better? Is there a demand for it in your area? If not, think why, - could you create the demand? Just because no one is doing it does NOT mean that it's not needed and if there are other companies already offering it, see what you can do differently. Listen to what customers say and give them what they are looking for. You should never compete on price alone. Offer a very professional service/product that benefits the client, and is a fair price which helps you achieve step 1. People pay for the results that you deliver. If you can't make what you need.... stop and think of something else.

4. Advertising. Look at as many relative advertising methods as possible and then create a plan to do them. Business does not come in itself!

5. Final check. You know why you want to do it and what you need to get out of it. You have a gut feeling that you do take pleasure and enjoy what you are going to do in your new career. You know that there is trade out there and how to differ yourself from other



Bobby Dazzler are offering a **FREE OVEN CLEAN** to the person who posts the best picture of their oven with the most random object inside it, to the company's Facebook page - BobbyDazzlerCleaning.

companies. You know how many products etc. you need to shift to pay yourself a wage etc, and that it is achievable. Only when you are totally happy, go and spend some money on what you need for the business. Leases, start up stock, equipment etc. Do not spend anything/ give up your job etc. until you know for sure this new move is for you.

But if it is for you, then do it! Don't look at what could go wrong, look at what could go right. I was lucky enough to be offered attractive jobs after selling my last business, but the pull of being my own boss was just too much. And if you love something, and it ticks all the boxes, then go for it.....TOOT TOOT!

Bruce Durham



Become a member of the Amble Leisure family today!

At Amble Leisure you'll benefit from:

- ✓ Indoor heated swimming pool
- ✓ A fully qualified team on hand
- ✓ Sauna and steam room
- ✓ Aqua classes
- ✓ Low rate packages to suit you
- ✓ State of the art gym facilities

...plus much much more

JOIN NOW
£22 per month
for the first 6 months
T & C's Apply

All local residents and the general public are welcome.

For more information
call our friendly team today

☎ 01665 710 727 🌐 www.parkleisure.co.uk

✉ ambleleisure@parkleisure.co.uk

Amble Health & Leisure Club, Links Road, Amble, Northumberland, NE65 0SD

RAILWAY INN

SUNDAY 3RD MAY 6PM

THE RETURN OF 'THE KENTUCKY COW TIPPERS'
THE NORTH EAST'S FINEST BLUEGRASS BAND



SUNDAY 24TH MAY 7PM

'DARREN LEWIS SINGS SWING'

Telephone: 01670 760320

The Railway Inn, Acklington, Northumberland NE63 9BP

www.railway-inn.co.uk

cottages in NORTHUMBERLAND



Looking to earn extra income from your holiday cottage?

Due to an increase in demand, we are looking for properties in your area that we can market on your behalf.

We can offer you:

- * Competitive commission rates
- * Full management service
- * Professional photography
- * 24/7 booking service

For a friendly chat call us on: 0191 231 3020

or email: enquiries@cottagesinnorthumberland.co.uk

www.cottagesinnorthumberland.co.uk

Traineeships

Employers

We are offering Traineeships in
All vocational areas so any
Company can get on board

Aged 16- 24

Interested in a Traineeship? Call
in and see what we can offer

Northumberland

Northumberland County Council

The Dovecote Centre,
Amble, NE65 0DX

Telephone: 01665 714736

Email: Kerrie.Riddell01@northumberland.gov.uk

For more courses see our Adult Learning brochure.

To find out what's on at The Centre pop in for a chat or to
collect a leaflet.

SPACES ARE LIMITED. ENROL NOW!!

Fun Workshops

All **£10** or less

- BUY AND SELL ON EBAY
- LEARN TO USE YOUR IPAD
- IPAD PHOTOGRAPHY
- MANICURES & NAIL ART
- INDIAN HEAD MASSGE
- AROMATHERAPY & ESSENTIAL OILS- HAND MASSGE
- INTRO TO CRAFTS USING RECYCLED MATERIALS

Are you considering working in schools? We are offering qualifications up to Level 3 in:
Supporting Teaching and Learning in Schools. Thursday, 1.00-4.00pm.

BOBBY DAZZLER
OVEN & CARPET
CLEANING

CLEAN AS A WHISTLE...
TOOT! TOOT!

10% OFF
YOUR FIRST ORDER WITH THIS LEAFLET!



Low Cost Rate 0333 577 7073

Mobile: 07500 908 992

Email: gleaming@bobbydazzlercleaning.co.uk

www.bobbydazzlercleaning.co.uk



/BobbyDazzlerCleaning

**ARE YOUR OVENS AND CARPETS
AS CLEAN AS THEY COULD BE?**

WE PROVIDE OUR SERVICES TO

- RESIDENTIAL • ESTATE AGENTS • TENANTS
- LANDLORDS • CARAVAN OWNERS

CARPETS FROM **£20** PER ROOM

OVENS FROM **£40**

MICROWAVES FROM **£20**

SETTEES AND CHAIRS
FROM **£10**

**NORTHUMBERLAND'S
PREMIER OVEN AND CARPET CLEANERS!**

Frog off!

Northumberland Wildlife Trust has issued its annual plea for people to help prevent a conservation catastrophe occurring in the region.

It's at this time of year when gardeners are tidying up their ponds after the winter that they may be tempted to move frog spawn from their own ponds into other ponds in the area. However, movement of frog spawn can lead to severe contamination and pose a threat to the frogs, toads and newts living in the area.

Frogs in particular are at risk from two deadly diseases. The first one chytrid fungus clogs their pores and, as they breathe through their skin, causes them to choke. This fungus has already been responsible for amphibian extinction in various parts of the world.

The second deadly disease which is commonly referred to as 'red legs' causes the skin to drop off their legs subjecting them to a very slow and painful death. This condition is incurable and is worryingly on the increase in various parts of the UK.

Kevin O'Hara, Conservation Officer at Northumberland Wildlife Trust said: "Our message is very simple: when it comes to excessive frog spawn, please leave it where it is as nature will sort it out."



Photo by By Becky Johnson

Magna Carta 800th anniversary

Media coverage of events leading up to June 15 2015 leaves us in no doubt that this will be a significant occasion, in both an historic and a modern context. At a national and international level, statesmen, lawyers, churchmen and the populace at large, are planning solemn ritual and exuberant celebrations.

Here in Warkworth we are a long way from Runnymede. This did not deter our baron John FitzRobert when he joined his other northern counterparts in the great undertaking which culminated in Magna Carta. Our village, along with twenty-five others has its part to play. With support from the Parish Council, a programme of events is planned as follows:

Friday June 12: at 6 pm Magna Party at the Cricket Club, bar, refreshments and local live music.

Saturday June 13 from 10 am to 4 pm:
United Reformed Church Hall - Exhibition of Facsimile Magna Carta, with historical background. The results of a competition for Year 4 pupils of the three local First Schools, will also be exhibited. Refreshments will be available throughout the day. Demonstrations of mediaeval crafts in St Lawrence Churchyard. These will include a wheelwright, leather-worker, silversmith, pole-lathe wood-turner, spinner, basket-maker and weaver, amongst others.
Children's workshop and story-telling for young and old in St Lawrence's Church
Outdoor drama in St Lawrence Churchyard. Warkworth Drama Group has written a short play based on the Magna Carta.
History walks

Saturday June 13 7.30 pm: Magna Concert at Memorial Hall, including Werca's Folk and Both Sides the Tweed, compered by Fred Calvert.

Sunday June 14 at 3 pm: ecumenical Service of Thanksgiving in St Lawrence Church at which Sir Alan Beith will be guest speaker and our framed Magna Carta facsimile will be installed. This will be followed by teas.

Diana Webber
diana.webber@btinternet.com

Rotary club's new charity



Amble and Warkworth Rotary Club President's charity this year is Alnwick & District Mencap.

The local chair is Amanda Peacock from Amble. She received a cheque for £1,000 from Rotarian Chris Ward.

Amanda gave a talk to the club recently on the history and development of Mencap since it was set up in 1946.



DO YOU WANT TO PROTECT YOUR HOUSE?

LONG TERM CARE & DIVORCE AND BUSINESS FAILURE, SIDEWAY INHERITENCE

NEED HELP WITH PROBATE FIXED FEE FROM £1000

LASTING POWERS OF ATTORNEY (changed 2007)
MAKE SURE YOU HAVE THEM IN PLACE WHILST YOUR FIT AND HEALTHY

WRITE A WILL FROM £99 OR FREE WILL REVIEWS

RING ENID: 07772 182 130 • 01670 855 768
FOR A FREE CONSULTATION IN YOUR HOME



EMAIL: ENID@JWALS.CO.UK
Estate Planner & Partner of Just Wills & Legal Services
Regulated by the society of Will Writers



Running for the new Amble lifeboat

The Great North Run is taking place on Sunday 13 September and Amble Royal National Lifeboat Institution is calling all keen runners to sign up to help raise funds for their Shannon class lifeboat appeal.

The charity has spaces available for anyone wishing to take part. Registration is £40 and the RNLI is asking people who sign up for charity places to pledge to raise a minimum of £300. Entrants should state within their online application that they want to raise money for the Amble appeal.*

Everyone taking part on behalf of the RNLI will receive an RNLI running vest, full sponsorship support, and a goody bag, snacks and drinks after the race.

Paul Nisbet, whose brother Christopher is one of the volunteer crew at Amble, took part in the run last year and raised £350 for the Shannon appeal. He explained: 'The efforts of the brave volunteer crew and their families who devote their time and resources to the charity were enough of an incentive

to run for the RNLI. It also seemed doubly important to take part to provide a vital boost to Amble's Shannon appeal, ensuring that the crew has the latest state-of-the-art vessel to continue saving lives at sea for generations to come.

To register please visit: www.rnli.org.uk/greatnorthrun entrants should select 'other' in the reason for participating box and list 'Amble appeal'. Registration closes on Monday 6 July. Further information is available by emailing: events@rnli.org.uk

*The Shannon is the RNLI's next generation all-weather lifeboat and is the most agile in the RNLI fleet. It is the first modern RNLI all-weather lifeboat to be propelled by water jets and not propellers. Capable of 25 knots, the Shannon is 50% faster than the lifeboats it replaces, ensuring that those in need are reached more quickly than before.

*The volunteers at Amble Lifeboat Station have a long and proud history of



Paul Nisbet (right) with brother Christopher at last year's Great North Run

saving lives at sea. A lifeboat station was first established in the town in 1842 and since then, Amble RNLI lifeboats have launched more than 1,100 times, rescuing more than 750 people.

Hold the front page - the bus is coming



Colin Heathcote, who lives in Warkworth, has written a fictionalised account of life on a rural local weekly newspaper. It has been published in a new book, "No Fires In Tring".

The book harks back to the 1960s when Berkhamsted Gazette copy was hammered out on an old Underwood typewriter and sent by bus to be converted into lead type at the printing works in nearby Hemel Hempstead.

Paul Barnes is a 21-year-old aspiring journalist who, after leaving school in Watford with a couple of O levels five years earlier, finally lands a job as a reporter with the Hertfordshire Newspapers Ltd.

Paul is on cloud nine and fantasises about getting great scoops and winning journalistic prizes for his great reporting and writing skills.

He soon comes down to earth as life as a junior reporter on a weekly newspaper in a small town does not provide the type of exciting 'hold the front page' stories he had fondly imagined.

Colin explains: "The book helps reflect life on a rural local weekly newspaper in the mid to late 1960s; a world which has long since disappeared. Since those days many dozens of small weekly and regional daily papers in the UK have disappeared to be replaced by free papers, news web sites and information churning social media networks".

"No Fires In Tring" is currently only available as a download via the Amazon web site.

Photo competition: Shots from the heart

A new photographic competition has been announced by the Bailiffgate Museum in Alnwick. Thirty photographs will be chosen for the "Shots from the Heart" exhibition in Bailiffgate Museum and Gallery from November 17 2015 to February 7 2016.

Photographs should be of events small and large, indoors and outdoors, from Christmas lights to summer shows, and fetes: any event which people organise for others to enjoy. Please include interiors, exteriors, daytime or night time, including people.

Organisers want subjects that capture the essence of the event and the people involved. There are two categories: under 18 and adult.

Photographs submitted must be taken between October 2014 and November 2015. The events photographed should take place within the area of the coast from Amble to Seahouses, or inland from Rothbury to Wooler and the Northumberland National Park east of the A696.

The closing date for entries is Sunday 1 November and all photographs must be submitted through their website as jpeg images. Please add to each photograph a caption and short paragraph that could take the form of a comment, interesting fact, or memory. Please include event, place and date. Winners will be announced on 28 February 2016.

Entry forms and conditions from Bailiffgate Museum. Advice is available from the museum by email ask@bailiffgatemuseum.co.uk.



Car park is finally re-opened

A disused car park on Turner St (behind Tesco) has been re-opened to the public and Northumberland County Council are asking for your feedback. You can view the consultation document on Amble Town Council's website: <http://www.amble.gov.uk/2015/04/amble-town-centre-car-park-consultation/>

The land had been in private ownership and was fenced off for many years. The Ambler understands that the land has now been resold and the new owner has leased part of it to the county council.



Hauxley Parish Council

Welcome to a new Councillor – Wendy Appleby has lived in High Hauxley since 1989, is passionate about maintaining the integrity of village life and recognises the importance of the Parish Council in having a voice in issues with potential to affect the Parish. She feels it is important to encourage all neighbours to participate in village affairs and to maintain community spirit. Wendy is retired following a career as a nurse then ward sister with the NHS. The members agreed unanimously to co-opt Wendy.

Grass cutting – It was agreed to request NCC provide additional cuts of grass verges outside of 30mph signage so there would be cut a total of six times over the duration of the cutting season rather than only at the beginning and end. This would include from the junction with the A1068 to Kirkwell Cottages and from the bend at the exit of High Hauxley, past the entrance to the nature reserve to the junction of Low Hauxley, to enable residents improved access between the two villages.

Community Litterpick/tidy up day – The Parish Council will hold a community litter pick and tidy up day on Saturday 9 May. All are welcome to meet at the Village Hall at 10.00 a.m. to collect litter picking equipment which will be provided by Northumberland County Council. To register to take part either contact the Parish Clerk in advance or simply turn up on the day. Refreshments will also be provided in the Village Hall.

Noticeboard – A new noticeboard is being investigated for Kirkwell Cottages. There is already a noticeboard in Low Hauxley and High Hauxley.

Parking Concerns – Concern has been raised by residents that inconsiderate parking is obstructing access through the village square. The Parish Council are looking into this

Next Meeting – The next meeting of the Parish Council is 6.30pm on Monday 11 May in the Village Hall, Low Hauxley – the public are welcome to attend.

Contact details: Parish Clerk:
Miss Elaine Brown
Address: 4 Simonside Crescent
Hadston, Morpeth NE65 9YB
Telephone: 07588659600 Email:
hauxleypc@hotmail.co.uk

Hauxley Nature Reserve closes for a year



Northumberland Wildlife Trust has announced that Hauxley Nature Reserve will be closed to visitors until spring 2016.

During the building of their new Wildlife

Discovery Centre, the entire reserve will be classed as a construction site, so will be closed to all visitors to comply with the guidelines set out by the Health and Safety Executive.

Staff and volunteers from the Trust will not only be working on the new centre but also across the whole reserve - installing new footpaths to create a circular walk, creating new viewing screens and carrying out vital maintenance work on the existing hides.

Although the Hauxley reserve will remain closed, the other five reserves along the Bay: Cresswell Foreshore, Cresswell Pond, Druridge Pools, East Chevington and Linton Lane, will be open as usual.

Bird site fenced off at Druridge Bay

Northumberland County Council has joined forces with conservationists to provide a safe place for birds to nest in an area of beach at Druridge Bay.

As beaches get busier, shorebirds such as ringed plovers, oystercatchers and terns jostle for space with beach users and their dogs, and it can be difficult for them to find a safe place to nest and raise their chicks.

The council have fenced off a small area of Druridge Bay, near Druridge Bay Country Park, and hopes that excluding people and dogs from this area during the summer will allow shorebirds to colonise and successfully fledge their young.

A grant from the Northumberland and Tyneside Bird Club has paid for the fencing materials and club chairman Martin Davidson says: "This part of Druridge Bay should be an ideal nesting area for shorebirds such as plovers and terns but they won't nest here if they are regularly disturbed by people and dogs. Druridge Bay is eight miles long, so we believe there is enough room for people and wildlife to share the beach."

Mike Jeffrey, countryside and green spaces manager at Northumberland County Council added: "We have fenced off an area of foreshore about the size of a football pitch on Druridge Bay, and the fence will be in place during the summer months when birds return to the shore to nest.

"The area will be regularly monitored by

volunteers, who will be checking how successful we have been in attracting birds. We are very grateful to Northumberland and Tyneside Bird Club and to the Northumberland Little Tern Project for their support with this project."

This work complements measures already in place at the Long Nanny Burn in Beadnell Bay and at Lindisfarne National Nature Reserve, to protect shorebird colonies.

Visitors to Druridge Bay are asked to keep dogs well away from the fenced area, to avoid disturbing any birds that might be nesting.

Anyone interested in volunteering over the summer or who has any questions about the project, should call in at the visitor centre at Druridge Bay Country Park or phone the centre on 01670 760968.



Northumberland volunteers needed to protect rare seabird

Nature-loving volunteers in Northumberland are needed this summer to help reverse the fortunes of one of the UK's rarest seabirds.

Every year, little terns fly from West Africa to our shores to breed. Once here, these seabirds – which are no bigger than a tennis ball – face a range of challenges that make it difficult for them to successfully raise a family. Nesting on beaches, they are at the mercy of coastal flooding and sea level rise, as well as human disturbance and natural predation.

In Northumberland, a group of conservation organisations have teamed up to help these birds as they attempt to nest

along the county's coastline. A partnership between the National Trust, Natural England, the RSPB and the Northumberland Area of Outstanding Natural Beauty Partnership, the Northumberland Little Tern Project is recruiting volunteers to help watch over little terns and other shorebirds along the Northumberland coast.

Most of the roles will be based at Lindisfarne National Nature Reserve or the National Trust's Beadnell Bay site, although there are also opportunities to work elsewhere along the Northumberland coast.

For further information, contact Mhairi MacLauchlan on 07768 310629.

Welcome to Trust Life, I hope you all enjoyed the Easter break and sunshine (okay - mixed with a little fog, but generally a good start to the season).

I'm sure many of you will be aware that at long last on March 28 we held an Open for Business event at the Harbour Village. The weather wasn't that kind but it didn't dampen the spirits of everyone who came along, and there were crowds of you who did – thank you.

As I write this update we have ten pods trading and the remaining five are either reserved or applied for. We really couldn't have asked for a better situation and owe thanks to everyone who has stuck with the project through some frustrating times. All we need now is the site completely finished and lots of fine weather and tourists to

visit the town then we could be looking for extensions to the pods! And it's going to be really quiet in the office when Sarah, Andrew and Helen move into the Seafood Centre.

But seriously it's good to see so many existing businesses wanting to expand and new ones investing in the town.

Our Seafood Brokers have been working on their business plan and have lots of good and novel ideas of how to interest people in Amble's fish offer. Although comments received, prove the market is out there already, which is promising.

Also on the development front, Persimmon are making great strides and I understand NCC have issued an invoice for payment of the first tranche of money, so things are progressing at last.

Amble Town Council have also had some

good news recently hearing that funding has been secured for the Paddlers project – well done to them.

The one way system proved it is working over the bank holiday. While there were still parking problems to resolve at least the traffic was heading in the right direction!

And speaking of right direction obviously the success of the Harbour Village project has caught the attention of other authorities because now we are receiving enquiries asking for information and advice on how we did it – good old Amble is a now market leader. So we must be heading in the right direction.

Enjoy the sunshine.

Julia

julia@ambledevelopmenttrust.org.uk

Raising money for cancer treatment



After a new year's dip and an event in the Radcliffe Club, £6,146.66 was raised and presented to Ward 33 at the Freeman Hospital, where they had saved my mam's life from leukaemia. She had intense chemotherapy and she's now in remission, but still needs to return for blood and bone marrow checks for the next four years.

Kerry Allan

Pictured with the cheque: Susan Wintrip, Kevin Wintrip, Kerry Allan, Paula Wintrip and grandchildren Shania, Jack, Kyle, Sain and Chloe.

Right (l-r): Susan Wintrip and best friend Kath Elliot, who helped organise fundraising



AMBLE TYRE SERVICES

NEW & PART-WORN TYRES SUPPLIED AND FITTED
PUNCTURE REPAIRS, WHEEL BALANCING, CAR, 4X4 AND COMMERCIAL TYRES

TEL: 0794 795 5453

UNIT 7, COQUET ENTERPRISE PARK, AMBLE NE65 0PE

www.ambletyreservices.co.uk



Amble Town COUNCIL

Meetings 6.30p.m. unless stated otherwise

Town: May 14 (following Annual Meeting) June 11, July 9

Amenities Committee: May 21, July 30

Puffin Festival: May 25-31

Garden Judging: Week commencing June 29 Garden Awards: Trinity Church, Percy St., July 17

NEW OFFICE

WE ARE SETTling into our new office at Fourways 2 but are still sorting out the files and folders. The work of the Council is very varied with town concerns, the cemetery, events etc. as well as all the legal paperwork we are required to maintain. We only employ one full time Town Clerk and a part time Administration Assistant who work during the usual office hours as well as evening meetings to carry out the administration. We hope this move will make us more accessible as it is centrally based. You are welcome to call and see us. Public opening hours are 10am to 3pm Monday to Friday, except for holidays, sickness or other meetings. We hope you understand the need to limit the public hours so staff can carry out other duties and more of our money is available to do things in the town. If possible, we would much appreciate telephone calls and visits to be between these times.

COUNCILLOR'S CORNER

THE LONGER I live in Amble, the more I appreciate how lucky I am. Here we don't have to push our way through crowded streets and cross busy roads jammed with traffic. We can take time to look around us and marvel at all the town has to offer. Gone now are the dreary coal dust covered houses and back lanes, replaced by smarter homes and new buildings. We mourned the loss of our industry but the tide is turning and more smaller businesses are setting up and bringing jobs with them. There is a new mood of optimism in the town. We see it in things such as the opening of the Harbour Village, the launch of the Skiff, the revamp of the Paddlers area; we feel it in the new voluntary groups emerging to help the town and encourage the community to join together to offer activities and events for all. All this with sandy beaches, set in beautiful countryside, with history surrounding us, but only a short journey to a fantastic city- wonderful!

Councillor Helen Lewis

WEST CEMETERY

THERE WILL be a survey of the trees in the cemetery and a five year maintenance programme put in place. With over 100 trees, regular assessments are necessary, as trees deteriorate over time and we need to be aware of problems, so the cost of professional work can be spread over the years. Many were planted a long time ago and are close to grave plots so we ask you to take particular care when visiting these graves. The shrubs around the cemetery, those in the Natural Burial area and any new ones will be kept around two metres to enable easier maintenance in the future. The Natural Burial area is being planted with native wild flowers amongst the shrubs, which are placed there after an interment, to create a haven for birds, butterflies, bees and insects. It is distressing for those whose loved ones are interred here to see owners exercising their dogs on this land. Please be more thoughtful and remember dogs are not allowed in the cemetery, other than assistance dogs. Soon the flowerbeds will be full of bright colour as they are planted up for the summer. Increasing costs of annual bedding mean we are gradually introducing a variety of perennials to keep beds bright.

COMMEMORATIONS

THE TOWN'S WORLD WAR 1 commemorations continued with a concert, 'Years to Remember', where many fine performances delighted everyone. This was held on the eve of the national commemoration of the Gallipoli campaign in April. The beacon on the Braid will be lit at 9.30pm on May 8 as one of the 100 along the East coast being lit to commemorate VE Day (the end of World War 2). We will be placing wreaths on our two War Memorials to coincide with the national commemoration at 3pm on that day, the time when Winston Churchill broadcast to the nation that the war was ended. We also hope that our church bells will be rung to mark this time. Shortly plans will be announced by the government about commemorating VJ Day.

HIGH STREET GARDEN

WHAT A WONDERFUL sight to see this renewed area ready for the warmer weather. The plants near the footpath will soon spread to cover the foundations of the old wall; the polyanthas are showing their cheerful faces and there will be a planter near the seat area. Do sit a while 'watching the world go by.' In the autumn the central triangle will be raised to show off the perennial plants which will be going in here. And, yes, those of you with long memories, we have found the pipe which held the town Christmas tree, so this year the tree will be back in its traditional place, heralding the start of our town's lighting display when its bright twinkling lights are switched on for all to see on November 22.

WEST ALLOTMENTS

NORTHUMBERLAND COUNTY COUNCIL have improved the West Avenue entrance so when it rains heavily, water does not run down and erode the route to the allotments. This has meant that, with some financial help from Amble Allotment Holders' Society, the sloped entrance has been resurfaced to make it more accessible for pedestrians. Please note this is not a Public Right of Way nor a Bridlepath but an access over private land to enable tenants to reach their allotments. We do not ban dogs but if they are kept on leads it makes it easier for owners to clean up after them. We do not allow horses as their hooves churn up the surface and result in further expenditure, so please pass this on to anyone you know who may be riding this way, often as a means of reaching the Braid. We are currently investigating the overflow of water near the Wynd entrance to see how we can solve this issue.

Please note meetings are now held on the top floor in Fourways 2

PARISH MEETING
COME ALONG between 6-8pm on May 12 to meet your Councillors. Hear what has happened in the last year and what is planned for the next. See the exciting plan for the refurbishment of the Paddlers area. Help decide if it will have a new name

EAST WARD:
Robert Arckless,
37 Anne Crescent,
Amble NE65 0OZ
Tel: 01665 711938

Helen Lewis,
5 Meadowburn,
Amble NE65 0PH
Tel: 07751 229 739

Craig Weir (Chair/Mayor)
76 Priory Park,
Amble NE65 0HY
Tel: 01665 712342

WEST WARD:
Ian Hinson,
11 Eastgarth Avenue,
Amble. NE65 0LW
Tel: 01665 710583

Jeff Watson
Thimbles, 60 Robsons Way
Amble NE65 0GA
Tel 07802 385367

Katherine Bennett
12 Robsons Way,
Amble. NE65 0GA
Tel: 01665 714812

CENTRAL WARD:
Kate Morrison,
3 Island View,
Amble NE65 0SE
Tel: 01665 711191

Jane Dargue
10 Sylvia's Close,
Amble NE65 0GB
Tel: 07795360513

Peter Robinson
7 West Court,
Amble NE65 0JG
Tel 01665 711687

TOWN COUNCIL OFFICES, FOURWAYS 2, AMBLE. NE65 0DT Tel: 01665 714 695 ask@amble.gov.uk www.amble.gov.uk

Twitter: @AmbleTC Facebook: www.facebook.com/AmbleTownCouncil

Elaine Brown (Town Clerk) Penny Harrison (Admin Assistant)

Office hours: 10-11.30a.m. & 1.30-3p.m. Monday to Friday

Minutes available to view in Office or online

Walks for ambling Amblers

From Craster to Alnmouth

There is quite a lot to see along this walk, including Craster Harbour, Mick Oxley's art gallery near the bus stop; the Sea House, Boulmer Haven and the fishing boats, and the back streets of Alnmouth.



Harry McQuillen

Take the X18 bus from Amble at 11.24am (or the 7.14am if you are an early riser!)

1. Get off the bus at Craster at the stop where the bus backs into the space at the rear of the bus shelter.
2. Head south along the street in Craster past the play park and along the grass track past Cullernose Point.
3. Follow the marked track past Rumbling Kern and the Sea House.
4. Cross the footbridge at the mouth of the Howick Burn.
5. Follow the track and the farmer's road to Boulmer.
6. Go on the beach at Boulmer, having sampled the hospitality at the Fishing Boat Inn if required.
7. It's all the way along the beach to Alnmouth.

The walk is about seven miles long and best done when the tide is out. Then home on the hourly X18 bus at 27 minutes past each hour.

How long you take is a matter of personal preference, sightseeing and fitness.

Greenpeace visit Amble to promote sustainable fishing campaign

As part of their Coastal Champions boat tour around the UK, Greenpeace visited Amble in April. They held an awareness event at the harbour, where Green Party and UKIP candidates spoke about their support for sustainable fishing. Local fishermen discussed their concerns with Greenpeace organisers.

Greenpeace say: 'By getting coastal champions from all political parties we can make sure the next government puts local, sustainable fishermen first. This will help protect our marine environment and coastal communities.'



REPORTS FROM OUR

One way system and parking issues

I am delighted that the meetings between County officers and Town Councillors continue on a regular basis. They have led to close monitoring of the new one way system and changes have been and will be made if they are considered helpful.

They also led to the re-opening of a town centre car park thanks to the support of local County Councillors, the Town Council and the hard work of the County Council staff involved.

This system is in place thanks to a temporary order which limits what can be done in terms of a more permanent solution. There will be due consideration of all issues before any permanent order is applied for.

On Easter Monday I was pleased to observe that the one way system seemed to have solved the gridlock of the harbour area even though it was a lovely day and the town was buzzing, full of visitors.

Harbour Village

Since I was at surgeries in Amble and Broomhill on the morning of the opening of the harbour village complex I missed the ceremony (and the soaking!) but I was there later in the day and have visited regularly, including the Easter weekend.

Work is almost complete now. The pods look good with a range of new and established businesses. It is great to see people exploring the area and the changes as a whole are an asset to Amble. This is another example of good partnership working and I am proud to see this vision become a reality. I believe we can see already that the harbour village gives Amble something unique. Let's hope for a good season and some decent weather over the spring and summer.

Robert Arkless

robert.arkless99@northumberland.gov.uk

Telephone: 01665 711938

County Councillors

It has been an exciting time recently in Amble, everyone is talking about the things that have happened or are happening in the town.

People from all over Northumberland have expressed to me how impressed they are with what is going on. It must be said that the things that have been talked about for years are at last happening. The trial of a one way system, the fantastic development of the Harbour Village and the new businesses, are all contributing to making Amble a tourist destination point instead of a place to just visit briefly.

There are more tourist led developments to come and I am delighted to be involved with many of them, we need tourism to keep our town vibrant and a place with a future for local employment.

There will be some people who do not like the changes that are being made, but ask the young people of Amble about job opportunities and you will soon see the need for changes in our offer to visitors that will help to provide much needed local jobs.

Many agencies and groups are working together to improve Amble's environment and are trying very hard to make it a pleasant, dog dirt and litter free, place in which to live. You will no doubt have noticed the tremendous effort that has been put into the town's flower beds and planters by local people.

Perhaps it is time as individual residents we should all do our bit to help and not just leave it to the current unpaid volunteers who have done so much to improve the locality over the last couple of years. Just keeping our grass verges free from litter and unauthorised signs can make such a difference!

As ever I am available to you

Jeff Watson

07802385367

And by email

Jeffrey.watson@northumberland.gov.uk

Warkworth Golf Club



On Sunday 29 March the club proudly hosted the traditional match between Northumberland County seniors and juniors.

The seniors won by eight matches to two, with one drawn.

Easter Saturday is the start of our summer season. The new Club Captain, Pete Holleran, drove into office, (see pic) supported by a large crowd of members. The fate of the ball from his high fade off the first tee remains a mystery! Members played for the first 'major' of the year, The Warkworth House Trophy, this year

sponsored by The Warkworth House Hotel.

Despite the relative calm only three players managed to beat par. The trophy was landed by Amble resident John Glass with a nett 65, followed by Daniel Cook (66) and Tim Capron (69). Club Chairman, John Gray, provided the evening entertainment with his renowned JAG disco.

Gents, ladies and junior competitions occur regularly and the seniors section runs nine hole sweeps every Wednesday and Friday, with a programme of friendlies against local clubs. Michael Lucas runs a 9 hole eclectic sweep each Friday evening.

To join the club a special offer of £240 covers membership to the end of the year. Juniors, under 18, can join for £10: complementary coaching from a PGA professional starts at the end of May. Or, if you just want to play, green fees are only £10 per head. For full details of membership, visitors or social events visit the webpage www.warkworthgolfclub.co.uk

East Coquet Local History Society events

Meeting at St. Mark's Church hall every 3rd Thursday of the month at 7.30pm, starting in September

Sept 17: Coquet Island Paul Morrison

Oct 15: Archaeology Mr. S Speak

Nov 19: Walking through history John Almond

2016 Jan 21: "Amble Sketchbook" by George Baxter/ Wm. Gibson

Joan Shepherd

Feb 18: Social evening

March 17: Minor railways of Northumberland, Roger Jermy

Apr 21: Strange tales of Northumberland, Geoff Hughes

Castles and Islands Challenge 2015

Coquet Yacht Club's annual prestigious event, the Castles and Islands Challenge, takes place on 20th and 21st June.

The event involves runners and sailors completing a 39 mile course, taking in Holy Island and the Farnes and the castles of Alnwick, Warkworth, Bamburgh, Dunstanburgh and Lindisfarne, finishing back in Amble. The event must be completed in 24 hours. This year's event is sponsored by Amble Harbour Village and Trackaphone.

A great event always finishes off with a great night in the club house. More info: 07710 423550 / phil.derry@coquetyachtclub.org.uk

Northumberland Plate Yacht race

Coquet Yacht Club and The Royal Northumberland Yacht Club will be hosting the first Northumberland Plate Yacht race, starting at 9am Saturday 18 July. The start line will be just off the Amble Harbour entrance.

Spectators will be able to watch 30 to 50 yachts start the race from Amble quayside. The yachts will then race down the coast to Blyth. For more details, contact Phil Derry (see above)

22 ~ The Ambler

Tiny Woods academy

Tiny Woods Academy hosted a successful Easter Camp during the Easter holidays and we are looking forward to hosting more camps in the summer.

We are delighted to announce that we are hosting a Football Tournament at Amble Welfare on Monday 25th May as part of the Puffin Festival celebrations. We will be supported by The Stephen Carey Fund who will provide defibrillator training to the public. Amble Community Team will also be supporting us by providing refreshments at the pavilion.

Thanks to Angie's Tavern and the Harbour Chippy for their kind donations towards the tournament. We will be running a raffle and tombola on the day and are looking for donations and prizes. Anyone wanting to donate? Please drop me a message on 07714862292 or email me josh.rutherford1@yahoo.com.

Shannon appeal

Thank you all for your support for the 'Shannon' Appeal. The total at time of print is £55,000. This is an amazing amount and it couldn't have been reached without your support – only another £145,00 to go! We can do it with your support.

The Jam Jar Army troops are gathering. There are lots of jars all over town being filled with your spare small change. The full jars can be left at the following places:

Easyway Estate Agents

Rook Matthew Sayers Estate Agents

Amble Development Trust offices, Fourways2.

They can also be brought in to any events ALF will be holding – coffee mornings etc.

May 17: Coffee Morning in Lifeboat House

May 24: Druridge Bay 10k Run.

May 25: Start of Puffin Festival

May 31: Warkworth Cricket Club Match at 2pm.

June 21: Coffee Morning in Lifeboat House

August 30: Lifeboat Day

Please come to these events to support our 'Shannon' Appeal.

Amble Lifeboat Fundraisers

Druridge Bay Country Park events

May 3: Spring Cleaning Car Show 10.30am - 5.00pm

24: Druridge Bay 10K Charity Run 9.30am (3 hrs)

27: Kite making, Picture trail & orienteering

10.30am and 1.30pm 2 x 1.5 hrs.

30 and 31: Traditional Market 10.30am till late.

June 7: Annual Triathlon - 8.00am for full triathlon

Later start for half triathlon.

Coffee at St. Mark's

St. Mark's United Reformed Church, Wellwood St.

Coffee mornings every 1st and 3rd Sundays

Raffle, tombola, Traidcraft every time.

Cakes, jams, cards and jewellery sometimes

Hall available for hire: £9.50 per hour.

Contact Sue 01665 711177

Dementia-friendly Amble

We are working towards making Amble a dementia-friendly town. Another open meeting will be held in St. Mark's Church hall on Thursday, May 14th at 5.30pm.

We will meet with a development officer to help us move through the next stages. All welcome at this meeting.

Talks, drinks and supper

Warkworth and Amble District Royal British Legion meets at Warkworth War Memorial Hall, Castle St, Warkworth every two months on a Wednesday evening at 7pm. We have 80 members of all ages from 15 to 94 and welcome anyone with an interest in the aims of the Royal British Legion. You don't need to have served in the armed forces. We have a speaker at each meeting and have drinks and supper afterwards. We are also affiliated with Amble Army Cadet Force.

Our next meeting is on Wednesday 13 May at 7pm. Our speaker will be Janet Brown, who will give a talk on the North East War Memorial Project.

On Wednesday 1 July 2015 at 7pm, June Watson will give a talk on five New Zealand servicemen who were shot at dawn in WW1; a case history of Robert Fowler, a Kiwi soldier injured by shrapnel at Gallipoli, who was a patient of pioneer plastic surgeons in NZ and UK. Includes a slide tour of the Returned Services Association in Warkworth, New Zealand.

Warkworth ceilidh proving popular

The next Warkworth Ceilidh will be Tuesday 12 May at 7.30pm. Held at the Memorial Hall, the events are proving really popular with residents and visitors as well as ceilidh enthusiasts.

Sandra Kerr, celebrated concertina player and folk singer, said on behalf of the Reel Northumbria Band: "It's great fun to play for enthusiastic dancers. I think it's the combination of expert calling from Elaine Carter, energetic lively music from the band and engaging songs and poems in the breaks between dances that provides the winning formula".

Tickets cost £5 from the Post Office or at the door and patrons are reminded to bring their own drinks, glasses, nibbles. The next and last one before a summer break will be on June 9.



Druridge Bay 10K

The annual charity run will be held on Sunday May 24. This year's charity is Amble RNLI Shannon Appeal. For more details, see their website: <http://db10k.jimdo.com/>

The 2014 race was won by Ian Harding (pictured) of Morpeth Harriers in 33.25 mins. Fastest woman was Jo Gasgoigne Owens of Alnwick Harriers in 38.42 mins.

Last year, 400 runners competed and over £5000 was raised for the Stephen Carey Fund.

Amble Bowling Club



The opening of the club for the 2015/16 season took place on Saturday 11 April. We welcome new members, experienced or not, to join us. We have a coaching programme for beginners and equipment is available free of charge. Come and give it a try.

The club has a monthly social evening on the premises where members can get together for supper and enjoy several social activities.

Last season we launched our company advertising boards which proved very successful and we still have spaces available for new advertisers. Just give us your design and we will have the boards made and erected on the green at a very reasonable price.

The bowling season runs until the end of September. During this period the club takes part in many friendly and competitive games against both ladies and gents teams from all over the county as well as our in house club competitions.

Friendly 'roll ups' are held on a daily basis around 1pm and 6pm and most weekends are full up with the inter club friendlies and competitions.

Should you require any further info please contact George Dixon on 01665 713711 or 07716571760 or George Nelson on 01665 711236 for the advertising.

G. Dixon, President,
Amble Bowling Club

GARDENING ANGEL



**LAWNS MOWED
WEEDING ETC**

From £8 per hr OAPs £7 per hr

Tel: 0788 609 0884



NORTHUMBERLAND
COUNTY COUNCIL

County Councillor Robert Arkless

will be holding surgeries on

Friday 29 May

**at 6pm - 6.45pm in Hauxley Village Hall
and**

**Saturday 30 May and 27 June
from 10am-11am in Amble Library**

All Constituents Welcome



TELEPHONE ORDERS WELCOME

01665 710 442

MONDAY TO SATURDAY: 11.30AM-9.00PM SUNDAYS: 11.30AM-2.30PM

***** NORTHUMBERLAND COUNTY COUNCIL

1 BROOMHILL STREET AMBLE NORTHUMBERLAND NE65 0AN



Puffin Festival fun: the events so far...

23 - 31 May
2015

For times and more information on these activities, please check www.amblepuffinfest.co.uk
You can find us on Twitter @AmblePuffinFest and Facebook: www.facebook.com/AmblePuffinFestival. More activities will be announced in the run up to the Festival. During the Festival, there will be daily updates at Puffin Island in the Town Square, TIC, Harbour Village and on the puffin boards around town.
Events and times may be subject to change.

Sat 23 & Sun 24 May

Beer Fest and Kite Flying display on the Braid - bring your teddy bear for a chance of sending him up for a flight!

Bank Holiday Monday 25 May

Beer Fest and Kite Flying display on the Braid along with Kick Start sports for children.

In the Town Square:

*Craft (and more) Fair
Caribbean Crew steel band,
Tribe Zuza dancers
Harbour Lights Choir
Climbing wall*

"Bramble the Amble Puffin" book sales

Harry's potter around historic Amble. Guided Walk with Harry McQuillen.

Amusements & refreshments

Puffintastic Crafts in Old Fourways Centre

Rainbow Pottery Painting at 42Queen Street

Football fun Tiny Woods - Football based activity at Welfare. Refreshments by Amble Community Team and Tiny Woods.

Wildlife photography cruise with Steve Emberton. Contact 01665 714695 or ask@amble.gov.uk, to book & for details.

Surfing taster sessions in the harbour at low tide - contact jon@northside-surf-school.co.uk

Funday at Radcliffe Club

Evening Talk on the History and Future of the Amble Lifeboat by John Young Snr & Rodney Burge. 1900 at St Mark's Church Hall. Tickets £2 or pay at door

Tues 26 "RSPB TUESDAY"

RSPB guides on Puffin Cruises (check with Puffin Cruises for details) Book ahead to avoid disappointment. Ring 01665 711975 or 07752 861 914 www.puffincruises.co.uk

*Craft Fair (and more) in Town Square along with Circus skills workshop
Amusements & refreshments
"Bramble the Amble Puffin" book sales
Morning 'bird-focused' walk with Tim Mason;
Atholl Swanston's 'flowers and birds' afternoon walk to Warkworth.
Harry's potter around historic Amble. Afternoon guided walk with Harry McQuillen.*

Puffintastic Crafts in Old Fourways

Rainbow Pottery Painting at 42Queen Street

Nellie the donkey. Look out for Nellie in various parts of the town

Surfing taster sessions in the harbour at low tide - contact jon@northside-surf-school.co.uk

Evening Talk on Puffins, Wildlife and Coquet Island by RSPB Warden Dr Paul Morrison. 1900 at St Mark's Church Hall. Tks £2 or pay at door

Wednesday 27 May

Storytelling, singing and fun with Book Happy in Old Fourways Centre followed by Storytelling for children with author Stephen Finlay

Rainbow Pottery Painting at 42Queen Street

Smartphone photography workshop in St Mark's Church Hall

Surfing taster sessions in the harbour at low tide - contact jon@northside-surf-school.co.uk



Explore the Coquet Estuary by canoe or kayak. Meet at Coquet Shorebase

Evening Talk on the Amble Railway by Bartle Rippon author of 'The Amble Branch' & 'The Alnwick Branch'. 1900 at St Mark's Church Hall. Tickets £2pp or pay at door.

Thursday 28 May

Children's Boofle Art at 42 Queen Street

Morning bird-watching walk with bird expert and Northumberland Coast AONB officer Iain Robson.



Surfing/StandUp Paddle contact jon@northside-surf-school.co.uk for details, prices and to book

Harry's potter around historic Amble. Guided Walk with Harry McQuillen.

Storytelling for children with author Stephen Finlay at Old Fourways Centre

Evening Talk on Wildlife Photography by Martin Kitching. 1900 St Mark's Church Hall. Tickets £2 or pay at door.

Friday 29 May

Children's Boofle Art at 42 Queen Street

Explore the Coquet Estuary by canoe or kayak.

Harry's potter around historic Amble. Guided Walk with Harry McQuillen. Leaves from Town Sq.

Surfing/StandUp Paddle contact jon@northside-surf-school.co.uk

Evening Talk with video: Northumberland's Secret Seas by Dr Ben Burville. 1900 St Mark's Church Hall. £2 or pay at door.

Saturday 30 May

The Colony music festival. 1100-2000 at Little Shore along with Amusements, music, refreshments

Go Canoeing! - Organised by Coquet Canoe Club.

Surfing/StandUp Paddle contact jon@northside-surf-school for details, prices and to book.

Nellie the donkey. Look out for Nellie in various parts of the town

Harry's potter around historic Amble. Guided Walk with Harry McQuillen. From Town Sq

Climbing wall Amble Branch of the Army Cadet Force.

Sunday 31 May

PARRT dog show on The Braid plus Well-Dog health check. Also on the Braid, Tug of War competition

Harry's potter around historic Amble. Guided Walk with Harry McQuillen. Leaves from Town Sq

Surfing/StandUp Paddle contact jon@northside-surf-school.co.uk

Taster sessions on the Skiff Coquet Spirit in the Estuary, ending with a regatta.

ONGOING ACTIVITIES

'Puffin Island' @ the Town Square - information point for the Festival. Puffin craft activity in Amble TIC. Watch out for appearances from Tommy Noddy the Puffin! Puffin Passport, Sweetie Trail, games and amusements Puffin Cruises from the Harbour. Book ahead. See ad. St Cuthbert's Church Puffin Trail The Harbour Village will be buzzing with the usual bespoke arts, crafts, gifts, food & drink, and attractions such as cookery, fishermen's gansey exhibition and more...

