



The Ambler

Amble's Community Newspaper

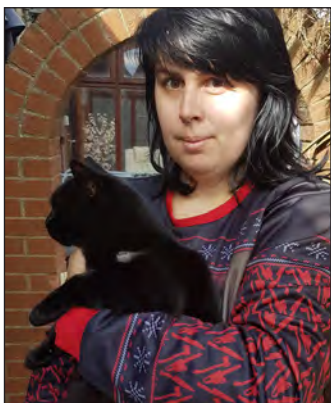
Issue 113 Oct/Nov 2018

Reward offered to find cat shooter

A reward has been offered to find whoever is responsible for shooting cats in Amble. A series of attacks have been made, but so far police have been unable to trace those responsible.

Lindsay Keir of St Lawrence Avenue has now offered a £200 reward for information leading to a successful prosecution. Lindsay's daughter Paige told The Ambler that the family were horrified at the cruel acts on four of their cats.

"My mum has fostered cats for about two and a half years. They've all come from difficult, sometimes abusive lives. We try to give them a peaceful life until new homes can be found. Knowing there's someone with an airgun out there shooting animals, is horrible. A person could be hurt. We want to feel safe in our neighbourhood."



Paige Keir with Luther the cat which was shot in the shoulder

The first incident took place at Christmas 2016 when one of the cats was fatally injured by an air rifle pellet. Two months later another cat was shot between the eyes, and survived.

Two attacks have taken place this year; the most recent at the beginning of September.

>> continued on page 7

Show your support and vote for Amble



Show your support for Queen Street's independent businesses by voting via Facebook, Twitter or Instagram

Amble's Queen Street has been shortlisted in this year's Great British High Street Awards 2018, putting it in the running to win a £15,000 prize.

• Now we need you to help vote it the UK's best.

Queen Street has been shortlisted in the Champion category of the Awards, which aims to find the UK's best high street. After a rigorous selection process, Queen Street was chosen by an independent judging panel as one of 26 streets to be shortlisted for the award.

The nomination was made by Julia Aston, director of Amble Development Trust, on behalf of Amble's Coastal Community Team.

In 2015 Amble won Coastal High Street of the Year beating Prestatyn and Bognor Regis in the category final.

Julia said: "Hearing Amble has been shortlisted for the Great British High Street is fantastic news. Given the recent negative

press about retail, we wanted to let everyone know we are very proud of our high street and the personal service our businesses provide to both local and visiting customers.

"In 2015 Amble won the best Coastal High Street and given the reduced number of categories this year, we thought why not go for the BIG one 'The Champion High Street', which pits us against some stiff and much larger competition."

The shortlisted high streets will now battle it out in a public vote, which accounts for 30 per cent of the final scoring, and will then have the chance to impress an expert judging panel.

The winner will be announced on 15 November 2018 at an awards ceremony in London.

Get voting for Amble

Julia added "Last time we won thanks to the wonderful support of everyone who voted. Hopefully we can rely on them again and show the world

beyond Northumberland that not only is Amble friendly, but is the best. Voting fingers poised!"

Visa, sponsor of the awards, say their research shows signs of renewed confidence in high streets around the country.

High Streets Minister Jake Berry MP said: "Congratulations to Queen Street on being shortlisted as one of the UK's best high streets in this year's Great British High Street Awards. This is a great opportunity to show your support for the hard work going on in Queen Street so get voting!"

How to vote:

You can vote as often as you like but you need a Facebook, Twitter or Instagram account. Visit: <https://thegreatbritishhighstreet.co.uk/high-street-of-the-year-awards/champion-finalist-amble> - or use the hashtags #MYHIGHSTREET and #GBHSAmble in your posts

Beverley's WW1 tribute with rare trench organ

Amble organist Beverley Palin has been much in the news lately after her WW1 trench organ was used in re-enactments to commemorate the end of the war.

Beverley told us the story of how she came to acquire the trench organ that she has nicknamed "Reg", and her efforts to restore it back to former glory.

"I acquired the organ in a bric-a-brac shop in Lyme Regis about thirteen years ago while I was on holiday. It was sold to me as a folding portable missionary or ships' organ but had come in with no provenance. I hardly looked at it before I decided that for £45 it was worth a punt for a bit of fun, put it in the back of the car and there it stayed till I got home.

"On getting it out when I returned, I found it was crawling with woodworm and the two side legs crumbled to powder-however enough was left for me to take a pattern and replicate them with a bit of marine ply from the shed.

"It spent the next week in my parents' garden with Dad spraying it with woodworm killer until I was certain the bugs were gone. Then we started to check the damage over. Most of it was salvageable with a bit of wood filler to stabilise it. My main intention was to have a reliable working instrument.

"I replaced some missing screws and the perished leather straps for the lid (the leather salvaged by a friend from a Bentley being reupholstered!) and other than cleaning and oiling, it was in good condition and remarkably still in tune.

"I didn't discover the military connection until about two years



Beverley in WW1 uniform, with Jeff Watson, Chairman of Amble and Warkworth Royal British Legion, who thanked Beverley for such a fascinating demonstration of the WW1 organ.

ago - these small portable organs were issued to the chaplaincy to accompany services, although similar instruments were common until the 1950s.

"They were designed to be easy to repair in the field, with a fairly basic mechanism and tough canvas webbing pedal straps. Most would have been disposed of when no longer needed or if too damaged, making mine a rare survival. Just three weeks ago I found a service number on it, which should help tie it to an individual!"

Anna Williams

At the Royal British Legion WW1 Centenary Exhibition in Warkworth in August, Amble organist Beverley Palin demonstrated her rare WW1 trench organ.

Beverley has been invited to play at the Durham Cathedral Remembrance Service organised by the Royal British Legion after officials, who were visiting the exhibition, were enthralled at how moving it was to hear an instrument the sounds of which may have been the last music that many soldiers heard.

Also performing were the Seaton's singers, dressed in period WAAF uniforms who kept everyone entertained with their renditions of the songs of yesteryear. The atmosphere was electric.

There was support from the Commonwealth War Graves Commission, Discovery Museum, Newcastle and The Western Front Association.

Refreshments were provided by Warkworth WI members and businesses contributed to the raffle prizes. £575 was raised for the Warkworth and Amble Poppy Appeal. Thank you to everyone who supported us. We had an amazing day.

June Watson

Secretary Amble & Warkworth Royal British Legion



endeavour seafoods

FROM SEA TO SHORE

Endeavour Seafoods can supply freshly landed lobster or crabs to order, just give us a call on

01665 712729

For that Special Gift or something different at Christmas

Custom made Hampers

(choose as much or as little as you wish from our product ranges including The Bay Tree and Ballancourt)

Gift Vouchers

(can be included in hampers for fresh seafood)

Seafood Platters

(made to order)

Now Available

Homemade 'ready to heat' meals

***Kerry and Alane would love to see you
on Sunday 18 November,
when Amble Christmas Lights are switched on.
Come and try our hot chowder with crusty bread***

For all aspects of floristry...
sympathy, gifts, birthdays, weddings



Moiraj

Ring 0746 493 2249 www.moiraj.co.uk

60 Queen Street Amble NE65 0DD www.endeavourseafoods.com

www.facebook.com/endeavourseafoods

Brewer wins two Great Taste awards

Amble brewery, Credence Brewing, has won two awards from Great Taste, the world's most coveted food awards.

Out of over 12,600 products, Credence Brewing was awarded two 2-star Great Taste awards, for its Kaamos and Porter beers.

The 2-star award means the judges dubbed it above and beyond delicious!

Judged by over 500 of the most demanding palates, Great Taste is widely acknowledged as the most respected food accreditation scheme for artisan and speciality food producers.

Michael Graham, Owner and Head Brewer at Credence Brewing said "As a business we are growing rapidly. We are producing a range of beers from light pale ales to really dark and delicious stouts.



Michael Graham, Head Brewer, and Dylan Stanford, Brewery Apprentice, with the Great Taste awards

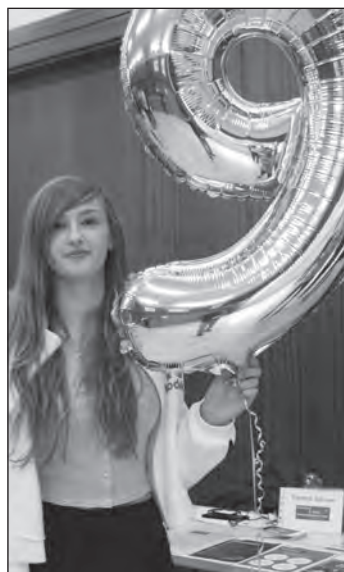
"We are so proud of what we're creating. Entering the Great Taste awards and winning is great reward for the team and also continues to put us and Northumberland on the map as

great, local producers."

Credence Brewing began in 2015, with four core beers. Since then, they have expanded their range to seven, and now produce their beer in bottles and casks.

They are now considering plans to export around the world.

The company is based on the Enterprise Park, but you can sample their wares in Amble and yourself at the Masons Arms.



Charlotte Stott gained a grade 9 in her GCSE Chemistry

Proud of results at JCSC

Our school is improving, is the conclusion from another year of successful results at JCSC.

Headmaster, Neil Rodgers, of JCSC said, "We are delighted to report that, following a very successful year in 2017, our GCSE results have improved once again at James Calvert Spence College to give us our most successful KS4 results ever"

Despite changes in grades and levels at GCSE, there are two figures that allow comparison: the proportion of students gaining a grade 4 standard pass [equivalent to the old grade C or above] in both English and maths and

the proportion of students who passed 5 or more qualifications, including English and maths, at grade 4 standard pass or above. Both figures are the highest ever recorded at JCSC.

Later this year, performance will be compared with that of other schools both locally and nationally, but Mr. Rodgers is confident that they will give further proof of an improving school.

He said, "I am incredibly proud of our students, and of all the staff who work as one team to ensure James Calvert Spence College is the best it can be for our community.

"At A level it's been a

pleasure to see the hard work of the past two years bear fruit for our Year 13 students. All are going on to their choice of university, degree apprenticeship or employment and are beginning the next, exciting stage of their lives.

"Students in our sixth form thrive on the individual approach we are able to take with our students, and it is their hard work and the hard work of each member of staff at James Calvert Spence College that enables us all to take such pride in their achievements. They are a credit to their families, the school and themselves."

Norma Hinson

Lionheart Cleaning

Commercial & Domestic Cleaning Services

Your One Stop Cleaning Service Provider

Our ever expanding teams of fully trained and insured operatives are insured and able to carry out all of the following aspects of Domestic and Commercial cleaning for you, or your business.

Carpets and upholstery	Conservatory	Pressure washing
Windows	Roofs	End of Tenancy
Gutters/Fascias	Commercial	Post Build
	Kitchens	General

01665 713448 www.lionheartcleaning.co.uk

LA FAMIGLIA

BY THE OLD BOAT HOUSE

Check our Facebook page for our latest special menus and offers

Autumn opening hours:

Sunday and Monday: Closed

Tuesday to Friday: 4pm - 8pm

Saturday: 12noon - 9pm

www.facebook.com/lafamigliaamble

80 QUEEN STREET, AMBLE 01665 711862



Reunited with precious memories

Agrieving widower has been reunited with a lost camera containing precious memories of his late wife.

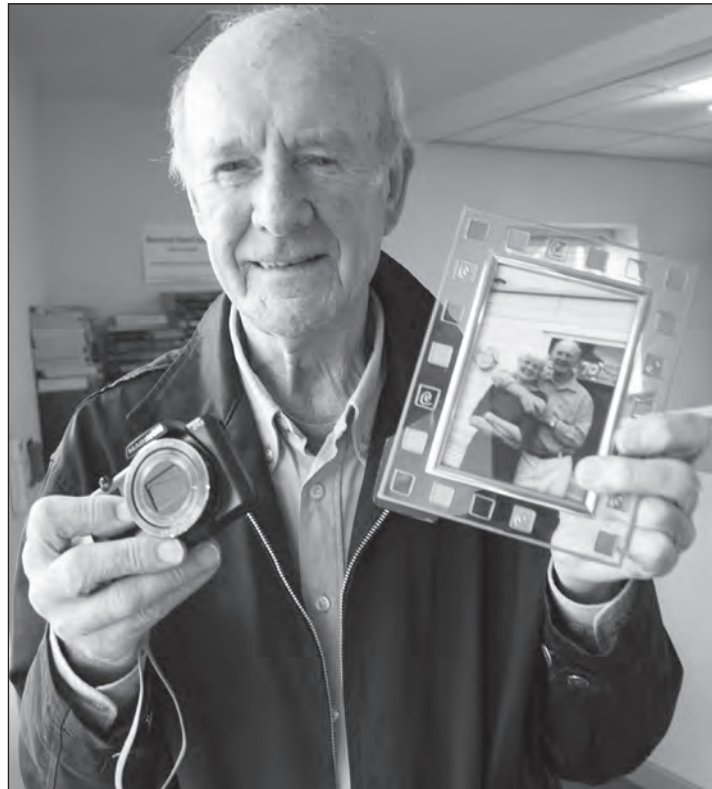
Edward (Ted) Johnson, 83, who has a caravan at the Silver Carrs site in Hauxley was devastated when he realised he had lost his camera, which was full of irreplaceable photos of his family.

"I had gone out for a walk with my dog, and took the camera in a plastic bag. I'm not sure when it dropped out of my bag. It wasn't until I got home that I realised it was missing. I asked around the caravan site, but no-one had handed one in.

"I told people in several places in Amble, as I was trying to find a police station. I spoke to The Ambler and they put a message on Facebook."

The camera contained many photos of Ted's late wife Iris, who died in a tragic accident at Christmas.

Aged 77, she was vibrant and healthy, but in a cruel twist of fate, she slipped on ice and banged her head, which caused catastrophic injuries. She never regained consciousness, and died several days later.



Ted Johnson with his camera and a treasured photo of his late wife

The couple who lived in Chester-Le-Street had been married for nearly 53 years, and for the last five years enjoyed spending weekends in their

caravan at Hauxley. Since her death, Ted has struggled with grief, but has found some solace in regular trips to Hauxley with his three cats and Tillie the dog.

And then a little bit of luck came Ted's way.

"About a week later I went into Tesco. I had told them about losing my camera. A lady behind the counter looked at me and then held up a camera. She said 'Is this familiar?' I couldn't believe it. It was so incredible!"

Tesco assistant Joan McAdam told The Ambler: "We're still not sure who handed it in, but when I gave him the camera I could see a tear in his eye.

"He said 'Yes, that's mine. I never thought I would see it again.' He kept shaking my hand.

"About ten minutes later he came back and showed me the photos of his wife were still on the camera. He was crying and it set me off too. I gave him a big hug.

"It was a wonderful moment. I could see he just needed a hug. I felt great because the emotion was wonderful."

Ted said "I am so grateful to whoever found it, and to all the people who helped me. Amble definitely is the Friendliest Port."

Anna Williams

See Letters page 6

Harry McQuillen's

Age of insecurity



I've put pen to paper today because there's so much going on. Though I can't find a thread running through my present ramblings.

As I write, it is 3 August and I read that a world record high temperature could occur somewhere. We've had wildfires in Greece and California, floods in Laos, a heatwave on four continents and Furnace Friday in the UK. There's a lot of Polar melt too!

Denial of climate change and human responsibility is still widespread. Donald Trump will not enforce a reduction in car emissions.

Predictably, China is making commercial inroads into Africa and other parts of the world. But who did a lot of empire building in earlier times?

Our Brexit goings-on are a can of worms. I'm sure that

something will come out of the negotiations and shuttle diplomacy.

The parameters for compromise must be limited by economic and other considerations.

It's really the 'other considerations' that will count: A Really Good Deal would encourage others to follow. Trade deals are rarely easy

or quick. My non-vote in the referendum doesn't mean I can't comment on the ongoing debate. My fingers are crossed for good relationships all round.

The environment often features in our news. We hear of the reintroduction of beavers in the Forest of Dean and other

such projects but we have many challenges ahead. What are the effects of human activity on our planet? It will take more than just tinkering to save the environment.

How about plastic where there should be none, even on the floor of the Pacific Ocean? How much landfill can we accommodate? The very air we breathe has changed.

The wringing of hands and the shrugging of shoulders won't do much good. We need a Grand Plan.

The Beano has lasted 80 years. I must have been one of the first subscribers at the age of 5. Pity I hadn't kept early copies. Now the Beano costs £2.75. That's a comment on inflation and the fact that we still love things that are printed on paper.

In a time of food banks,

charities and individual carers, society has its challenges. Could Universal Income be the answer? The apparent need to check a phone every 12 minutes may be balanced by the ease with which we can access information.

Good news for drinkers: people who don't drink at all are more likely to develop dementia, than drinkers of a moderate persuasion. Smart meters have yet to become universal despite encouragement from government. Could it just be that suspicion of technology is not uncommon?

I think I may be following in the footsteps of G.K. Chesterton. His series of essays was called "Idle Thoughts of an Idle Fellow."

By the way 3 Aug 2018 was my 85th birthday!

Harry

Chance encounter inspires epic bike ride



Jeremy Davies is cycling from Amble to Slovenia to raise money for funds for the Cure Parkinson's Trust. His sister, Philippa Wheeler, aged 67 has recently been diagnosed with Parkinson's, and a chance encounter with a fellow cyclist, gave Jeremy the idea for this mammoth fund raising expedition.

Jeremy is a member of

Warm Showers, an international organisation where cyclists host each other on long journeys. A warm shower and possibly a warm meal are offered at no charge. In return, all members agree to host others either now or in the future.

Jeremy told The Ambler, "I recently played host to cyclist Dr Tilo Kunath, who is a professor at Edinburgh University. He's conducting research into finding drugs already in use for other diseases that might help Parkinson's sufferers. I was invited by Dr Kunath, to the Edinburgh Research Institute and I went along to see some of the work they do."

It was this visit which inspired Jeremy to fundraise for The Cure Parkinson's Trust as it funds some of Dr Kunath's research.

Jeremy set off on 19 August, and his trip takes him first to Newcastle, then he will journey to Newhaven and cross to Dieppe. From there he will go via Paris to Geneva, where he plans to visit the World Health Organisation and ask what they

are doing about treatments for Parkinson's. He will then travel through the Alps, Italy and the foothills of the Dolomites.

He hopes that international members of WarmShowers will host him on his journey. He enjoys making new friends and meeting people, but he is carrying a tent and cooking equipment just in case.

He will be riding his recliner bike, which he says can be more comfortable than a conventional cycle. "It is faster on the flat, less far to fall off, good in wind, it is slower going up hills but goes like a bomb downhill," he said.

The intrepid cyclist plans to start off riding 35 miles per day, increasing to 50 or 60 as he becomes fitter, but he says he is not working to a deadline.

You can see his Just Giving page here: www.justgiving.com/fundraising/pedal4cure

For more information on Warm Showers, see: www.warmshowers.org and the Cure Parkinson's Trust: www.cureparkinsons.org.uk

Vivienne Dalgliesh

Arctic visitor arrives in Hauxley



There was great excitement when the Hauxley Bird Ringing Group caught an Arctic warbler at the Hauxley Nature Reserve. There are only about five records in the UK each year!

Arctic warblers breed in the far north of Fenoscandia and northern Asia. Any reaching Britain may have bred in eastern Russia before migrating to South East Asia - so this one was well off course!

Staff and volunteers are now watching the skies for the arrival of yellow browed warblers, redwing, fieldfare and red poll, and keeping their fingers crossed for waxwings touching down.

The Amble Inn is hiring

New hotel, bar and restaurant, The Amble Inn, is nearing completion and the call has gone out for key staff, as the equivalent of 35 full-time jobs are set to be filled in the near future.

The Inn Collection Group who operate the Amble Inn are looking for a general manager, head chef, head housekeeper and assistant managers. Front of house, bar, housekeeping, maintenance and kitchen staff will also be required in due course.

The Inn Collection Group operations manager Paul Brown said: "We are pleased to announce that we are beginning the recruitment process at The Amble Inn. Generating jobs is a real high point as we progress towards our November opening. We are delighted to be boosting Amble's economy with the creation of 35 full-time employment positions in the area."

The 30-bedroom purpose-built inn will be open 365 days a year providing value-for-money accommodation, quality drinks including local real ales, and the 150 seat restaurant will serve homemade pub food from breakfast until 9pm.

For more information about opportunities at The Amble Inn or to apply email your CV to paul@inncollectiongroup.com

THE MAD JAM WOMAN



Award-winning

- Preserves & Relishes
- Dips
- Ghost Chilli Sauces

Fourways One
Bridge St, Amble NE65 0DR
07766 857680

Also available at the Seafood Centre

www.madjamwoman.co.uk



Pod 2
Amble
Harbour
Village

Cosmetics, Skincare, Bath & Body and Accessories
Book a Nail Appointment now by popping in the pod, sending us a Facebook message or texting 07464269245

Facebook | Twitter | Instagram
www.coquetcosmetics-uk.com

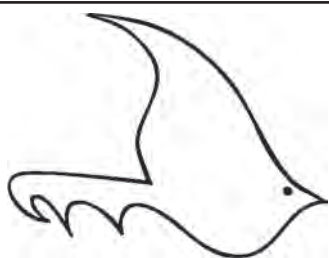


Funeralcare

Our caring staff are here to listen and advise you, 24 hours a day, 7 days a week



Coquetdale Cottage, Queen Street, Amble
Tel: 01665 710437



The Ambler

Fourways 2
6 Dilston Terrace
Northumberland NE65 0DT
Tel: 01665 712929
www.theambler.co.uk
editor@theambler.co.uk
Twitter: AmbleByTheSea
YouTube: AnnaAtTheAmbler1



Editorial Team:

Vivienne Dalglish - Cath Findlay
Chris Herzberg - Norma Hinson
Andrew Mounsey - Bartle Rippon

Editor: Anna Williams

Thanks to:

Mark Beswick & The Artogracchi Crew
Judith Hardisty

Distribution:

Dawn, Taylor, Martin, Rachel,
Bryan and Lorraine

Printing:

Azure Printers, Pegswood

Would you like to join
The Ambler team? We are a friendly
group who welcome contributions
and help from anyone who would
like to volunteer.

Thanks to all our contributors, sponsors and advertisers:

Co-op Local Community Fund

Rotary Club of
Amble and Warkworth

Inner Wheel Club of
Amble and Warkworth



The Ambler is a proud member of
the Independent Community News
Network



The Ambler is a project of
Amble Development Trust

The Ambler is printed six times per
year. The views expressed in The
Ambler and The Ambler Online are
not necessarily those of
the Editorial Team

Printed on paper from sustainable
forestry in the UK

We've had a bit of a spruce up

You may have noticed a change in this edition of The Ambler. We've had a bit of a spruce up, which includes colour on the front and back pages. We hope you like the changes. However we've had to balance the books by cutting down the number of pages. But by sharpening our editing pencils, hopefully our articles are a little more concise, so we have another jam-packed edition for you to enjoy. Let us know what you think.

Speaking of finances, we were sorry to hear that the Bede Street Club is having problems. A decision will be made on its future after this edition has gone to print, so we will bring you up to date in the next issue.

We urge you to vote for Queen Street in the Great British High Street Awards. It is a wonderful

opportunity to support our local independent businesses, and show the rest of the UK how fantastic Amble is.

If you're on Facebook, Twitter and/or Instagram, simply post a message of support for Amble and be sure to include both these hashtags #MyHighStreet and #GBHSAmbler. You can vote as often as you want until 31 Oct.

A cascade of knitted poppies will be used to decorate the memorial gardens to help commemorate the end of WW1. Many people have already knitted poppies, but more are still needed. Any pattern is acceptable, however there is one available at Fourways2 and Amble Pin Cushion, should you want it. Finished poppies can be handed in at Fourways2.

WHAT YOU SAY...

See also page 8

Housing for single people

With so many new plans for extending the town of Amble, it often makes me feel (as a young resident) that something is missing.

Could this be a lack of variety in the current housing provision here? The friendliest port may well be attracting new people to live here, however, it seems to have turned its back on those who already live here and would like to remain in their home town and play a part in the community.

There are ten housing development projects being proposed for Amble. What they lack is catering for young people like myself who are single and do not need, or can afford, a four/five bedroom house. We also have an aging population who require better forms of housing to suit their needs, such as bungalows on smaller plots of land which are more manageable.

The new housing developments in Blyth and Ashington have a better variety of housing. One example is the Portland Estate at Ashington which has medium size blocks of flats which are perfect for young couples and single people and I am sure many Amble residents feel it is a nonsense we have none of this accommodation here.

If they want to encourage more people to remain living in the friendliest port, then it is time consideration is given to the wider variety of people living in the area, not just to those who can afford a four/five bedroom house.

Maybe consideration should also be given for those who cannot get on the property ladder, to maybe invest in Housing Association properties which can provide long term, secure rental agreements? Not everyone is fortunate enough to be able to buy their own property even if they are working as they simply do not earn enough. You tell me.

Name and address withheld

Heartfelt thanks

One Sunday in August I asked a lady from Amble where I could find the Police Station to report that I had lost my camera and she pointed out Fourways 2.

Calling at the office the following day, I expected to meet a police officer, but no, I met Anna from The Ambler. After describing the camera and where I thought I had lost it on the coastal footpath beside the nature reserve or on the beach nearby, Anna kindly posted the information on Facebook.

I explained why the photos on the camera meant so much to me with so many memories encapsulated within it. Anna showed a great deal of compassion which helped to ease my pain and lift my spirits. I talked of our holidays at Silver Carrs Caravan Park and time spent in Amble shopping and chatting with the staff, and members of the public who were very friendly. She took an interest in my life with my beloved wife Iris and our dog Tillie and three cats, Button, Sapphire and Bonnie.

The next day, I went shopping at Tesco and Joan M, a member of staff who knew me from my many visits there was holding a camera saying "does this look familiar to you" I could hardly believe my eyes when I knew it was my camera, it brought tears of joy, relief and a hug from Joan M.

This brings me to the main point of my letter that is to express my heartfelt thanks for all the help, caring and understanding I've received.

My message to everyone in Amble and indeed Silver Carrs Caravan Park, whoever you are and wherever you are, is thank you for the caring and friendship shown and the help you've given to me over the last awful months since the tragic death of my lovely wife Iris. I will never forget this.

As a footnote and a final thank you the title "Amble the friendliest port" is absolutely true.

Edward (Ted) Johnson Chester-Le-Street

See page 4

Thank you from Amble Food Bank

Amble Food Bank thanks all the people of Amble and surrounding areas for their continuing support. We are very grateful for the kind donations we receive and put them to good use for those in need.

We were able to help families in Amble and the surrounding areas, with food parcels who receive free school meals, during the summer holidays.

We wish to continue this valuable service over the Christmas period and into next year.

We would like to continue the reverse advent calendar theme initiated last year, where instead of collecting a treat each day, put a tin or packet into the food collection baskets in the Co-ops.

Bill Cruickshank, Amble Food Bank
amblefoodbank@aol.com

Help find the person who shot my cats

<< continued from page 1

"It was early evening, my mum was in the garden and she heard a shot. Then the cat came running in and we could see it was injured," said Paige.

A Northumbria Police spokesperson said: "At 7.54pm on Wednesday (September 12), police received a report that a cat had been injured at an address on St Lawrence Avenue in Amble.



Indie the cat was shot and killed in 2016. Since then three other cats have been shot.

"It is understood that the cat's injury was consistent with a pellet wound.

"Anyone with information about this incident, or who knows those responsible, is encouraged to contact police by calling 101 quoting reference 1062 12/09/18."

Paige said, "We can understand that not everyone likes cats, but if anyone in the area has issues with them,

please come and talk to us. Attacking them like this is totally unacceptable.

"We must have spent over £1,000 on vet bills. We've informed the police and the RSPCA, but they don't know who is doing this. That is why we've decided to offer a reward."

Paige can be contacted on 07492 728166 or paigekeir@hotmail.com
Anna Williams

Claire Shiels'

Business Matters



How customer service can make or break your business

It's been a busy summer and I hope all our local businesses have profited from what, on the face of it, seems to have been an influx of tourists – credit to the hot weather!

I was a bit concerned however, by the standard of customer service I came across in some cafes and restaurants – and not just with the school and Uni students who always provide much needed support during peak season. Some adults, who really should know better, came across as surly, treating customers as an inconvenience rather than the people paying their wages.

Thankfully, there are always eateries such as The Fish Shack, The Sand Bar and Jasper's where customer service is highly valued and you're guaranteed a warm welcome, but some others should take note. It only takes one bad experience to lose a customer and potentially gain a scathing review which

can damage your reputation. Invest in enthusiastic staff with excellent social skills and I guarantee customers will be much more forgiving for any other problems, and give you a second chance.

The same goes for shops in the town. At this point, I do have to give a shout out to the young lad in The Amble Butchers – what he lacks in age, he more than makes up for in social skills; always engaging customers in banter in a naturally friendly way. He really is a credit to the shop.

And what about Lawrence's? First on High Street and then on Queen Street since 1974, how many of us have wandered in, vaguely hoping to find a specific item but not quite sure what – and walked out with exactly what we were looking for? There's no designer layout, no hi-tech wizardry and yet, the two

"Invest in enthusiastic staff with excellent social skills"

family-run shops continue to trade, having seen so many other shops open and close.

I grabbed the opportunity to speak to Debbie when I called in for an adaptor which would allow me to fit a European plug into a British socket (of course they had one and as usual, Debbie knew exactly where it was). She agreed that customer service was what had enabled them to continue despite mounting competition from larger chains and the internet.

An exceptional degree of knowledge of their stock, from dog leads to door locks; spatulas to screws, has earned them a reputation over the last 44 years that's second to none.

Debbie explained that knowledge had been passed on from experience in the shops and by hard work – scouring every page of hardware catalogues to see which items are most popular. Being a small, independent firm, they are very flexible and can switch stock very quickly, which places them well ahead of the chain stores. Also, they're able to stock

not only the current season's products – but items for every single season. Going abroad at Christmas? They can kit you out with a bucket and spade. Passing through the town in the next few weeks and want a wreath to put on a relative's grave? They'll have a Christmas wreath that will see you right through the winter months.

Debbie admits that a hardware chain on the outskirts of the town could spell real problems for their two shops – but which stores can compete with the variety of stock, the in-depth knowledge and fantastic service that this family can provide?

Whatever happens, I urge everyone to use, not lose this gem – along with all the others who would never dream of giving a "If it's not on the shelf we haven't got it" response to their customers.

Claire

Claire Shiels is an Amble-based small business PR specialist

Sullivan Associates

CHARTERED BUILDING SURVEYORS

Offering professional property advice throughout Northumberland

Building Surveys, Defects Inspections
Plans drawn for extension and new build
Planning Applications, Building Regulations Approval
Disabled Access Advice, Party Wall and Boundary Matters
Design and Project Management

Tel: 01665 513010

Email: info@sullivan-associates.co.uk

Fourways 2 6 Dilston Terrace Amble Northumberland NE65 0DT



TELEPHONE ORDERS WELCOME

01665 710 442

MONDAY TO SATURDAY: 11.30AM-9.00PM SUNDAYS: 11.30AM-2.30PM

***** NORTHUMBERLAND COUNTY COUNCIL

1 BROOMHILL STREET AMBLE NORTHUMBERLAND NE65 0AN

Another successful Fun Day



Hauxley Fun Day was a big success again this year. We were due a wet one, but fortunately plenty of folk still turned up to take part in this classic village fete.

We would like to say a big thank you to all the local businesses that helped to make the event such a success by donating prizes, including Helen Grierson, Roland's Butchers, Lawrence's, Sea & Soil, The Amble Butcher, Jaspers Bistro, Spurreli Boutique Ice cream and The Sand Bar Cafe. The winner of the art raffle was delighted with her original Jimmy Thompson painting, so thanks again to Jimmy for continuing to support the event.

Hauxley Dairy kindly provided the milk for the refreshments in the village hall, and the delicious beer was supplied by Credence Brewing in Amble so we are very happy to be keeping things local!

This event is held each year to raise money to take care of the Village Hall in Hauxley so it can be used by residents of the area. The total amount raised on the day was £3910.90, which will go towards having all new external doors fitted, and an upgraded disabled access ramp as part of the on-going maintenance.

So a big thank you to everyone who helped out, who came along, and who supported us!

Hauxley Village Hall Committee

Co-housing group discussion

We are hoping to establish a co-housing, natural building group in Amble. We would be really pleased to hear from anyone who might be interested in attending a first discussion about this. Topics might include: how to obtain land, natural building techniques and co-housing structures as well as anything else that will help to set up a co-housing development in Amble. Please email eileensutherland2003@yahoo.co.uk if you are interested.

Allan Sutherland, via email

Message from lifeboat fundraisers

On behalf of the fundraisers, crew and everyone associated with the Amble Lifeboat Station I would like to express thanks and sincere appreciation for the support from the community towards our annual Harbour Day. Without this generous support – either from donations or from attending the day - our event would not be able to raise the much needed funds to keep our crew, their kit and lifeboats working.

The weather wasn't very kind to us. However I am delighted to say that with your help we have raised £5,600 this year. This is a tremendous amount of money and your contribution played a huge part in achieving this.

We continue to raise funds throughout the year and you will find a welcome every third Sunday of the month at the Lifeboat Station where we hold a coffee morning 10am – 1pm; we are dog friendly. Come along and enjoy some of our homemade goodies, meet the committee and see some of the work that the volunteers do.

The Fundraisers are looking for new members, if you are interested please contact jill.faulconbridge@gmail.com

Jill Faulconbridge, Chairman Amble Lifeboat Fundraisers

Thank you to La Famiglia

Thank you to Amble restaurant La Famiglia for their recent help with raffle prizes. It was our first fundraiser and we raised £319.

Cindy Fairbairn, Aspire to Believe Ltd, Wooler

Coquet Island sets record for UK's rarest seabird

Arare seabird which was on the brink of extinction has been saved, thanks in no small part to RSPB wardens and volunteers on Coquet Island.

The roseate tern is the UK's rarest breeding seabird, and they have enjoyed the most successful season in the last 40 years on RSPB Coquet Island, with 118 pairs raising chicks at the Northumberland site. 111 pairs were recorded in 2015 and 2017.

Roseate terns were once widespread with colonies across the UK. However, their population dropped 80% in the 1970s, when only 16 pairs were left on Coquet Island.

This small island, off the Northumberland coast, is now their only regular UK breeding colony.

Paul Morrison, Warden at RSPB Coquet Island, said: "For the past three years we've been consistently attracting more than 100 pairs of roseate terns to the Island, who have fledged more than 100 chicks each year.



Roseate Terns on Coquet Island

"This is paving the way to building a larger population, which will soon reach a point where birds are beginning to nest in places beyond Coquet Island. Ultimately, we'd love to see roseate terns that have been raised here, establishing new colonies around the UK."

This breeding success on the Island is owed to a programme of conservation work over the past 18 years on the island,

aimed at reversing the fortunes of the threatened seabird.

Unlike other tern species, which nest in the open, roseate terns prefer to nest in crevices and small holes. For this reason, the RSPB introduced nest boxes on specially created shingle terraces in 2000 when the breeding population was only 34 pairs.

This improved the birds' chances of nesting and raising

chicks by providing shelter against predators and bad weather.

The conservation efforts have been boosted over the past three years through the EU-funded Roseate Tern LIFE Recovery Project. This has provided over 200 new nest boxes, a special hide, which enables wardens on the island to protect and monitor the nests, and live camera feeds in some of the nest boxes.

Coffee
roasted
on site

Open
every day
10am - 3pm



Retail
Online
Wholesale



Seriously good coffee.

Roasted in Northumberland, enjoyed everywhere.



Pod 15 Amble Harbour Village
www.mochamondo.co.uk



A lovely Coastal Jewellery Studio
at Amble Harbour Shopping Village,

Nautical and
Sea-themed
designs
available in

- Earrings,
- Necklaces,
- Charm Bracelets and
- Rings



A stunning range
of Sea Glass
pieces,
all set in
Sterling Silver

Opening times:
Wednesdays - Sundays
11 - 3pm

Beautiful natural semi-precious gemstones



Pod 3, Amble Harbour Village

www.seawavesstudio.co.uk



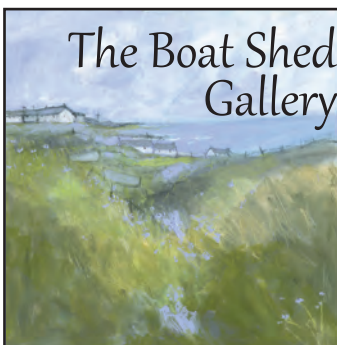
"Movement for Health"

by Amanda Barrell

Yang Style Long Form
Tai Chi Chuan & Qigong

For classes and tuition in Northumberland
Please visit my website www.tautong.co.uk

Or call 07885 682078 - 01670 820464



POD 4, AMBLE HARBOUR VILLAGE

Original paintings and prints from
the coastline of Northumberland.
Delightful cards and gifts.

edie pebble

Pod 14 Amble Harbour Village



Beautiful handmade gifts,
vintage treasures and
nautical decorations

Meals on Wheels

Meals on wheels served 5 days a week, delivered to you by a friendly DBS checked driver. All our food is prepared daily and sent out to users. We have a wide-ranging menu and cater for all special dietary requirements. We deliver to Amble, Hadston, Broomhill, Red Row, Ulgham and Widdrington. Get in touch to have a menu sent out to you.

Job Club & Courses

Every Tuesday we have support from the National Careers Service, AIM North East and a range of other providers giving support to those 18yrs+ looking for work. Our friendly advisors will support you and ensure you have professional advice to help you find work.

We are also here to help you with courses and training working with our list of onsite providers.

Community Cafe

We have a community cafe with a 5 star food hygiene rating that is open to the public. All the profits from our cafe employ local people and are returned to the Community Projects we run. It is also a great base for work experience and giving back to the community for anyone interested in lending a hand. It is open 6 days a week Monday - Saturday 9am - 2pm and we serve freshly cooked food daily.

Benefit, Housing and General Support

Our teams are here Monday - Friday 9.30am - 4.30pm to assist local people..

Youth Services

We have a Youth Team dedicated to supporting local young people, we have services three evenings a week for 9-19yr olds, we have a range of specialist services too. We run School Holiday programmes just completing our 600 place summer activities which were great !! LIKE our Facebook page to find out more.



Hadston House
Putting Local People First
01670 761537



Not sure which way to go?

We can offer

a little

direction

16-24?

We can help with
interview clothing & transport;
employment & training opportunities
and so much more...

Get in touch to see how we can help you...

aimnortheast@gmail.com



01670 761 537



MONEY IS PROMISED FOR JCSC

We asked Northumberland County Councillor Jeff Watson for an update on improvements to our school that were promised in early 2017, but were later put on hold. In the September full county council meeting, Councillor Watson asked Councillor Wayne Daley- the cabinet minister for education - what was happening.

Councillor Daley praised students and staff at JCSC and said there's been a gigantic improvement. He said £540k has already been spent on the school, and another £110k will be spent to fix the roof. The recent housing developments are likely to be an issue - more people in Amble but not enough educational space. But money has been requested for JCSC by the county council from the developers.

Jeff Watson told us "an ADDITIONAL £6 million has also been requested and is currently proceeding through proper channels in the Education department of Northumberland County Council."

This £6 million has been requested for repairs and improvements. The money is likely to be put towards special needs requirements too.

In conclusion, the county council says JCSC has made positive improvement but still has a long way to go.
By Ava



WHY WE SHOULD CARE THAT THE WORLD IS DYING

Global warming is bad and here's why.

At this point, everyone must have heard of global warming. If not, global warming (or climate change) is what will most likely happen to the Earth. Large scale factories that let out smoke are damaging the air we breathe and destroying the ozone layer which, if you didn't know, protects the earth from the sun's rays.

Adults right now are contributing heavily towards pollution and global warming. It is making more issues that younger generations are going to have to deal with when we get older and become responsible for the issues adults have created.

Everyday factors that contribute to global warming are things as simple as buying plastic bottles and containers that we are eventually going to throw away. These are likely to end up in the ocean harming

the wildlife that lives there. Days on the beach can be fun and relaxing, however if you have picnics or even just a snack you need to remember to take your rubbish home with you.

Even though people are told all the time from when they are young, to stop littering and care for our environment, people still don't listen, and even worse, they don't believe it's happening when in actual reality it's happening every second of everyday. We are slowly killing our earth, and if we want to continue the human race we need to start taking charge and responsibility for our environment.



It is not just humans who are suffering by our own actions, animals are the main victim from our carelessness. Many marine creatures are getting hurt such as: seals, sea turtles, seagulls, and all types of fish, whales and dolphins. The plastic can trap them and possibly suffocate them.

By Jessica



STORY: ALEC AND EMILY'S RESCUE CENTRE: EMILY'S BIRTHDAY

"I don't know, mum!" Alec cried. "What should I get her?"

Alec's mother sighed. "Alec, you're Emily's brother. If anyone should know what to get her for her birthday, it's you."

"But I can't think!" he whined, from where he sat in the back of the car, heading up to the Rescue Centre, where they were going to meet Emily - she'd been at a friend's party.

"Well at least try," urged his mum. "Her birthday's in a week and you haven't got her anything."

Alec sulked. At the age of 9, his mum should surely buy a present for Emily from him. He shouldn't have to think of something himself. But he could already imagine how disappointed Emily would be if he didn't get her anything, and there was no way he was letting her down.

He tried to think. What did Emily like? She liked being outside on her bike almost as much as Alec did. He could get her the new dragon-style helmet he had really wanted himself. She'd love that! And Alec had really wanted to go to the new archery class, so he could ask for them both to get a place. She'd probably like it.



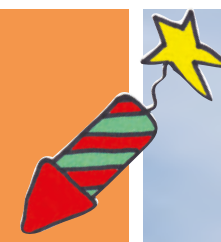
However, when he suggested these ideas to his mum, she shook her head. "Alec, these ideas are all just things you want. Try and think of Emily."

"I am thinking of Emily!" he complained, slumping down in his seat. He tried again. She liked the video game that Alec played, she always watched over his shoulder... no, that was what he liked again. This is about Emily, he reminded himself. What does Emily like?

She liked the rescue centre, she liked animals, she liked helping people, she liked food and she liked books, but none of these presented any ideas for gifts. She would have loads of food at her party, they weren't allowed a pet and she could get any book she wanted from the library. Alec sighed. What was he going to do?

It was only when he got to the rescue centre that inspiration struck. He could get Emily an animal adoption! She'd get to help the animals at the same time as getting photos and gifts with an animal theme. It was a perfect idea!

"Hey Alec, you okay?" Emily called, skipping over. Alec grinned, thinking of how happy she'd be with her present. "Yep."
By Lily



WHAT'S ON FOR KIDS FROM NTC AT THE DOVECOTE CENTRE

Puppet show on October 7 at 3pm; Jack and the Beanstalk and Billy Goats Gruff.

The Little Maid Who Danced To Every Mood on December 15 at 2pm; it has grouchy farmers and flamenco dancing pigeons - so should be good fun.

The Christmas pantomime is Sleeping Beauty which will be playing on December 21, 22, 23, 24, 28, 29, 30 and 31.

All above performances are at The Dovecote Centre, Amble.

NTC are looking for young people who may be interested in taking part in the pantomime or helping out back stage.

Please get in touch if you are interested: email admin@northumberlandtheatre.co.uk or ring 01665 713655

MEET ARTO GRAFFI- WE AREN'T ALL PSYCHOPATHS!

Artogرافي, the young writers section of the Ambler has been going since June 2001 (Issue 9 of the Ambler!) with the help of Anna. Together we construct the colourful, fun middle section of the Ambler. In between learning about journalism we go on outings and learn about Amble and its development. As well as this we get to interview new and exciting people. We also get juice and biscuits! This edition is brought to you by...



AVA TIBBITTS



LILY TIBBITTS



JESSICA SHANKS



AMY PATTERSON



GEORGE-ANNE CARNEGIE



Ryan Gerrard doing a tabletop jump at the Ironworks track, on Teeside



RYAN GERRARD: MOTOCROSS STAR

11 year-old Ryan Gerrard is Amble's local motocross expert, racing in the borders club motocross championship and more than occasionally getting trophies and medals. Motocross is cross-country motorbike racing, done on dirt tracks. Ryan's favourite track is in Duns. He trains in Blyth and goes to the 6-round summer championships and 4-round winter ones in the Borders, competing with many people around Britain.

Ryan's been riding since he was 6 and loves motocross. He says it's fun as you get to make friends and go to different places, even though he has to race against some of the older boys with more speed and experience.



He says: "I love MX you get a chance to race against people you wouldn't normally race against. So for example you become friends with people who live in Scotland and you wouldn't normally meet up with them if you were in Amble."

But it isn't all fun and games. There's a lot of training involved, not only biking. Ryan also regularly goes running around the fields. Falling off of the bikes can also be dangerous - Ryan has put his teeth through his tongue falling off a jump! As well as this, the cost of a day license and getting there can be quite expensive.

However, Ryan doesn't let this put him off. He finished 1st in the 2016 Ecosse club championship, and came 3rd in last year's Border Club championship and 2nd in this year's.

Why does he think people should try motocross? "You can train and practice on mountain bikes," Ryan says, "it's a load of fun!"

By Lily



FOR ALL YOUR REQUIREMENTS COMMERCIAL
OR DOMESTIC, ALL PESTS COVERED ALSO
PROOFING WORK.

RATS GREY SQUIRRELS FLEAS MICE
BED BUGS WASPS
BIRD CONTROL RABBITS
COCKROACHES ANTS FLIES
MOLES

NO CALL OUT CHARGE, 24/7 SERVICE



www.coquetpestcontrol.co.uk
info@coquetpestcontrol.co.uk

Tel: 07470 661996 / 01670 787528



Cromie Pharmacy

Are you flu safe? Get the jab!



**Flu can be a serious illness
... are you at risk?**

Getting a flu jab can protect you all winter. It's free if you are over 65, pregnant, or have a long-term health condition such as severe asthma, diabetes, a chest, heart liver or kidney complaint or lowered immunity.

You need to get the flu jab every year. The flu jab is quick, safe and free* and we have vaccines in stock. To book your jab, visit [Cromie Pharmacy](#).

This is an NHS funded service 

*Those not considered 'at risk' may incur a charge. Ask our pharmacist for details.



158 Percy St, Amble 01665 710 896



**Golden Charter
Pre-Payment Plans available.**

**One of the few independent
family funeral services.**

**Serving from Alnwick to North Tyneside
& surrounding areas.**

***Complete Funerals
from £2345***

***Direct to Crematorium
from £1650***



KEVIN FOSTER FUNERAL SERVICES

AMBLE & SURROUNDING AREAS:

0800 121 4280 0759 098 3156 (24hrs)

www.kevinfosterfuneralservices.co.uk



Kevin and Pat Foster



What a great summer we have had this year. It was wonderful getting up to sunny days, everyone being cheerful and happy. The sun really does bring out the best in all of us and makes a change of conversation, instead of complaining about rain or cold, being able to say it's another lovely day.

I'm sure many will have watched the progress of the hotel build, which seemed to come together quickly once the roof was on – and now they are hiring staff, which is fantastic news.

The next development will probably be the supermarket if planning permission is secured. It will be good if it brings employment opportunities but we need to ensure any jobs

created are not at the expense of existing ones and we keep our vibrant town centre as well as developing out of town expansion.

Speaking of our town centre, we have submitted an application to the Great British High Street again this year and are pleased

"We keep on at NCC and Arch" to announce we have been shortlisted. This year there were fewer categories to apply to so instead of being a Rising Star, we decided to go for the BIG

one – the Champion. Why not aim high!

At the moment the selection or voting process hasn't been

confirmed but please keep your voting fingers ready just in-case.

You did Amble proud in 2015, can we do it again?!

A town centre car park still remains elusive, but never daunted we keep on at NCC and Arch who are looking at a couple of options, hopefully one of which will prove financially possible.

At the time of writing we are still waiting to hear if our Expression of Interest to the Coastal Communities Fund has been successful so still sitting with fingers crossed. Decisions were due to be announced in June, then July, then August and we are still waiting. Seems the Brexit effect may be as far reaching as Amble!

On the welfare front, there has been more damage caused to some of the seating.

It takes a strong person to 'break' through cast iron, but somehow someone has managed it, so sadly more money will have to be spent replacing rather than providing new equipment.

Well as I sing off its another sunny day, lets hope it last a while longer, because the next Ambler edition will be in November, just in time for Christmas – sorry!

Julia and all Trust staff

julia@ambledevelopmenttrust.org.uk

Local equestrian centre celebrates opening of new facilities

Hope Farm Equestrian Centre is celebrating the official opening of its new facilities, with a fundraising event on 28 October.

The centre has been open now for ten years and has seen an extensive transformation thanks in part to Yard Manager Enid Grant and owner, Phil Farmer.

Enid said "I am delighted we are able to provide this new outdoor schooling arena for use by the riders at Hope Farm and those across the equestrian community in the North East. This new facility has been designed to competition standard, allowing us to train and compete more effectively."

The new outdoor space follows on from the build of an indoor facility in 2015, making the centre one of the largest and most comprehensive in the area.

The fundraising event is designed to raise the profile of the centre and support the Great North Air Ambulance, a charity utilised and valued by the equestrian community. There will be a dressage demonstration to music, a family dog show, fun and activities for children and adults and a wide range of food and drink.

The official ribbon cutting will be done by a representative of the Great North Air



Enid Grant

Ambulance. Admission to the event is free, and parking is available. Enid said "I'm really looking forward to the day, and being able to share our excitement of the new facilities as well as raising funds for a superb charity. It will be a great day for everyone."

Enid, 27 an ambitious event rider competes with her own horses and on behalf of owners across the region. Her goal is to attend Badminton Horse Trials in 2020 as part of their Grassroots programme, as well as to qualify for Scottish Grassroots Championships held at Blair Castle in August 2019.

Parish church to celebrate 150 years

In 2020 St. Cuthbert's, the parish church, will be 150 years old. During those years there have been changes to improve the use and beauty of the church, such as installing stained glass windows, the construction of an entrance porch and fitting electric lights.

Now the Parochial Church Council (PCC) is proposing changes to the back of the building. These would include installing a toilet, with access and facilities for disabled people and parents with babies; a servery and storage cupboard.

At a meeting in church, where plans and images could be viewed, Vicar John McDermott led a discussion saying that the PCC believed that the church is at the heart of the community and people take advantage of the door being open daily.

The plans required a change to the font, removing the present stone font and plinth. A smaller, moveable font, with a wooden



frame and a metal bowl, could take its place.

The next step is to send the proposed plans to the Diocese of Newcastle for verification, then in the near future, Public Notices, relating to the proposals will be posted on the door of the church.

The cost is estimated to be about £60,000 and £5,500 has been pledged. Fundraising efforts will be made in the next few months.

Hopefully, everyone in Amble can then join in celebrating the improved Parish Church building at its special anniversary in 2020. *Norma Hinson*



Local Handyman service, offering a prompt, reliable, professional, fairly priced service.

Contact Stu, 0797 185 0940
handystu@btinternet.com

Lobster assessments aid sustainability



Conservation officer Alex Aitken (pictured) has joined Northumberland Inshore Fisheries and Conservation Authority (NIFCA).

One of her duties is the continuation of the lobster stock assessment survey which began in 2014. Lobster is the most significant commercial shellfish targeted by fishermen in Amble.

Over 18,000 lobsters

were successfully measured in Northumberland between 2014-2016, leading to increased knowledge about the size distribution, size at sexual maturity and levels of catch per effort involved in the Northumberland fishery.

In 2017 NIFCA officers joined fishers 3-4 times per month to conduct observations from ports throughout the district.

Alex Aitken told the *Amblert* "I am really pleased to be involved in the important work of NIFCA and particularly the enhancement of our knowledge about the vitally important lobster stocks in the NIFCA district to help to ensure their long-term sustainability".

NIFCA would like to thank all the fishermen who have participated in the lobster stock assessment surveys.

Awards for Amble Lifeboat Crew



At a ceremony in Amble Lifeboat Station on 26 August lifeboat coxswain John Connell presented a 20 year award to Robert Henderson and a 40 year service badge to Keith Sim.

During his service Robert Henderson has undergone training and is presently helmsman on the inshore lifeboat Mildred Holcroft. He also serves as second coxswain on the all-weather lifeboat Elizabeth and Leonard.

A former fisherman he

now skippers various vessels maintaining offshore wind farms around the British coast.

For many years Keith Sim served as senior helmsman on Amble's inshore lifeboats and his main role these days on the all-weather lifeboat is emergency mechanic.

He is currently the longest serving Amble crew member. A former miner he is employed by Northumberland County Council as a heavy goods driver.

Dry Water Arts Centre opens its doors

"Amble's on the up!" declared my friend as we left the Dry Water Arts Centre open day. We had just spent a very pleasant afternoon in the refurbished building off Wellwood St. (Fender's Yard.)

Proprietors Frances Anderson and Paula Turner had organised entertainment, by among others 'Fiddlez Onely' a Northumbrian group who played traditional music, and 'Good Wife Hot' a multi-talented trio who also write books, make rapper swords and violins.

'Door to door' poet Rowan McCabe kept us enthralled with

his compositions inspired by knocking on doors and asking 'What is important to you?' Rowan has a passion for local dialect and his orations were 'muckle' good.

There was an opportunity to try some hands-on printing with Luke McTaggart, a second year A level student from JCSC. Luke had gone along to the Arts Centre as part of his work experience and was hooked. He now helps out when ever he can.

There was a photographic exhibition entitled 'A canny bit of rinse.' Together with print making, film and textiles,

photography is one of Frances's fields of expertise. The exhibition is dedicated to a much-loved former member of the Curiosity Café, Evelyn Straker. and features the physicality of the sea with Evelyn's poetry and observations of the tide.

The Curiosity Café meets on Tuesdays and caters for people with dementia. Current members Mo and Brian Halliday told Frances "You'll never know what a difference this has made to our lives. It came along at just the right time. Interacting with other people in a similar situation has given us both a lift

and something positive to look forward to."

The centre will be getting involved with the community as well as running arts and creativity classes to promote health and wellbeing. Health and well-being are Paula's specialties; she is a dance artist and yoga teacher.

The venue is available for hire or you can become a 'friend' of Dry Water Arts Centre which will help support the Curiosity Café and give you discount on activities. See more at www.drywaterarts.uk

Vivienne Dalgliesh

Trees removed without permission will not be replaced



A group of trees removed before developers were given planning permission will not need to be replaced, as no breach of planning has taken place says Northumberland County Council (NCC).

Arch Developments who are the developers for the Amble Inn applied for permission to remove the trees on land in front of the hotel, as part of the landscaping

scheme. Plans submitted for approval also included lighting and odour control.

However the county ecologist objected to the landscaping scheme, saying it fell short of what was required and should be revised. Amble Town Council also objected to the removal of the trees.

An amended landscape plan was later submitted by Arch; this

time it met the approval of the ecologist who said: "I also note and welcome that the removal of trees at the southern limited (sic) has been omitted from the revised scheme."

The following day however, workmen removed trees on the land at the fish roundabout.

This was before any official decision on the plans - landscaping, lighting and odour control - had been made.

We asked Arch why the trees were removed; firstly without planning permission and secondly after the ecologist had expressly approved retaining them. A spokesperson said "You will need to speak to NCC."

We asked NCC whether the removal of the trees had been

contrary to planning regulations.

A spokesperson told us: "We have received a number of comments about the tree removal - and our enforcement team has now investigated this.

"The trees in question are not in the Conservation Area or protected by a Tree Preservation Order, and there are no conditions on the planning approval for the site which restricts their removal.

"Removing the trees does not constitute a breach of planning and therefore no formal action is being pursued.

"We are in discussion with the developer about the implementation of the approved landscaping scheme and how this could be supplemented further."

Anna Williams



Reports from our *County Councillors*



The biggest issue at my surgeries is parking.

Some areas in Amble do not have adequate space for parking of vehicles within their residences.

Although residents generally have no entitlement to park outside their homes, they still expect to be able to do so.

We do have a problem with on-street parking in residential areas particularly - Harbour Road, Broomhill Street, Leazes Street, Runciman Way and in and around the Harbour Village and Quayside especially during the holiday season and at weekends. (There is a rising demand for residential permit parking in these areas)

The biggest problem which manifests itself is vehicles blocking access to dropped kerbs, parking on pavements, obstruction of driveways, camper vans parking overnight, restricting access which causes tension within these residential

Terry.Clark@northumberland.gov.uk

streets also hindrance to large delivery vehicles and emergency services.

The most frustrating is in narrow streets. It is not unusual to see vehicles parked partly on the pavement and blocking access to dropped kerbs.

This restricts the safe passage of pedestrians walking along these pavements especially those with sight disability, using mobile scooters / wheelchairs, and adults in charge of young children.

Because of this, these people are finding it hard to get from their home to locations within our town, particularly the doctors and the shops. Some situations make it impossible to get past; these should be reported to the police who have powers to deal with obstructions.

Please do not block access to dropped kerbs: think of the elderly, mobility scooter users, and parents with young children.

Courtesy parking please.

Terry Clark

Over the last few months many people have asked what is happening with regards to improving JCSC's environment.

Although I was involved in negotiations and forward planning I was not at liberty to discuss them in public or even answer questions from the Artograffi young journalists. Unfortunately some people have put out misleading statements re the co-operation of the school and NCC I can now set the record straight.

The County Council has instigated a change in planning rules and in future any new housing development must contribute to the educational needs of its community. In Amble's case this means that £693,000 has been secured for the area so far from housing developments due to take place.

£540,000 has been invested in the maintenance of the school buildings and further £110,000 is to be spent on a new roof.

An additional £6 million has

Jeffrey.Watson@northumberland.gov.uk 0780 238 5367

also been requested and is currently proceeding through proper channels in the Education department of NCC.

A further discussion is underway about supplying a specialist provision in the education of children with special educational needs.

I received an unequivocal assurance from the Cabinet member responsible for education that he will continue to pursue with a sense of urgency proper reviews for the development of JCSC.

Finally, JCSC has had improved results again this year and its new headmaster, staff and governors are to be congratulated on the improvements they have managed to foster. NCC remains firm in its desire to improve the facilities. The suggestion that this school is failing in any way is simply not true and not helpful to anyone.

Jeff Watson

Mariners in Youth Football Development League

Amble East End Juniors Under 7s and Under 8s have started their Youth Football Development League, with the Under 7s winning their first game against North Shields Reds.

It's been a busy summer for the Mariners, as they are now known, with the club receiving sponsorship for home and away kit. BestOne Amble, Matt Fuels Coal Merchant and 06 Marmaris Turkish Barbers all sponsoring the club kit. Amble East End Juniors would like to thank Raj, Matt, Can and Yusuf for their generosity in sponsoring the club.

The Mariners are always looking to recruit new players. Children in Years 1, 2 and 3 are all welcome. Training is Mondays and Wednesdays at JCSC Sports Hall 5-6pm.

We can reveal an exciting opportunity for both boys and girls in Nursery and Reception. Mini Mariners is a fun introduction to football and an ideal choice for parents who want to give their children a healthy and active start in life. This ensures that youngsters develop interpersonal skills and more, as well as having fun with a football.



Sessions are on every Tuesday 5-6pm at James Calvert Spence College Sports Hall.

To register your interest please message our Facebook Page or contact Josh Rutherford on 07714862292.

The Under 8s new away strip sponsored by 06 Marmaris Turkish Barbers

Hauxley Parish Council



Hauxley Parish Council will be holding a Christmas Consultation drop-in in Low Hauxley Village hall on Saturday 8 December from 11am – 4pm. The purpose of this is to meet with villagers to give them a chance to talk to councillors and

let the Parish Council know of any ideas and suggestions they have for the village. It will also be a chance for the villagers to see what the Parish Council do. Tea, coffee, mince pies and mulled wine will be served!

Contact details: Parish Clerk: Mrs J Reynolds

Address: 14 Oswald St, Amble, Morpeth, Northumberland, NE65 0EG Tel: 07786 255 649

Email: hauxleyipc@hotmail.co.uk

Website: www.theambler.co.uk/category/local-councils/hauxley-parish-council/



Amble Town

COUNCIL

All meetings at 6pm unless stated otherwise
 Town: 11 October, 8 November 13 December
 Amenities: 20 November

EAST WARD:	Helen Lewis, Ian Parks, 33 Warkworth Avenue, Warkworth. NE65 0TP	Craig Weir (Chair/Mayor) 76 Priory Park, Amble NE65 0HY 01665 712342	WEST WARD:	Jeff Watson Ian Hinson, 11 Eastgarth Avenue, Amble. NE65 0LW 01665 710583	Tracey Hinton, 13 George Street, Amble NE65 0RZ 07802 385367	CENTRAL WARD:	Jane Dargue 10 Sylvia's Close, Amble NE65 0GB 07795360513 01665 711191	Martin Horn 22 Mariners View Amble NE65 0JH 01665 712836
-------------------	---	---	-------------------	---	---	--------------------------	--	---

REMEMBRANCE WEEKEND: SATURDAY 10 & SUNDAY 11 NOVEMBER

PLANS ARE NOW finalised for this weekend. **Saturday 2pm**- those who helped raise money towards the Clock Tower repairs have been invited to place wooden commemorative crosses, with the names of those who died in WW1 on all the town's memorials, in the grass area behind the memorial after its blessing. These mirror the placing of the crosses at the beginning of the WW1 commemorations in 2014. These will be laid in the shape of a cross and the area will be flanked by cascades of poppies made from community donations. More poppies- knitted, crocheted, sewn, cut from fabric/felt are still needed and can be handed in to the office.

Sunday morning the laying of wreaths will commence **just before 11am** and the service there will include a dedication of the new peace memorial. This will be followed by a service at St. Cuthbert's Church. Council have produced leaflets detailing how Amble has commemorated the WW1 Centenary and these will be handed out in the town square with the order of service sheet. Later that day, Councillors will serve refreshments to invited guests who helped with the memorial repair funds. At approx. **6.15pm** Ellington Brass Band will play and march from Dovecote Street to North Street, then walk to the Braid where they will play for the gathered crowd. **Just before 7pm**, the Mayor, Craig Weir, will read the nationwide exhortation for peace, before the lighting of the beacon at **7pm**, joining the national chain of beacons to signal the end of the WW1 centenary. This will be followed by an orchestrated fireworks display to reflect the celebrations at the end of WW1. Please remember three important things- most of the Braid is open, uneven and dark so for your own safety you may wish to take a torch to light your way; some pets do not like the fireworks' noise and bright lights so please ensure their safety during the display; this event is free but collections will be held for the Royal British Legion Poppy Appeal and Warkworth & Amble Rotary Club- two worthy causes- so please be as generous as you are able.

PARKING COMPLAINTS

PLEASE try to be more considerate when parking. We are getting many complaints about vehicles so far onto pavements that prams, wheelchairs etc. have to go onto the road to get by. Others are blocking the dropped kerbs so preventing access to these and meaning detours are having to be made to the next available one- if there is a one! Tourers and Campervans are parking in residential streets overnight- if you have guests coming in these please make the proper arrangements for them to stay overnight. We have asked NCC and Northumbria Police to highlight these issues to their officers as they are finable offences.

TOWN SEATS

OVER the autumn/winter season, all the seats are checked and refurbished. If you know of one in the town which needs urgent attention, please let the office know. We are very grateful for the donation of a new seat for the top of the Wynd. If you would like to donate a seat, please contact the office.

COUNCILLOR'S CORNER

HOW is Amble changing? I had a complaint the other day from a lady who likes to meet up with friends for a coffee, a cake and a chat once a week. She told me that they now have to meet at least four times a week to keep up with the expanding Cafe culture. A back handed compliment if ever there was one! She is right is some ways- Amble is expanding with the Amble Inn opening soon, the retail outlets next year, a new Cafe Bistro and the Northumberland Touring Company putting together some great plays and the 28 September saw the first of the new cinema shows.

Is this a good thing for Amble, this progress or would we be better off returning to the way Amble was perceived 10 years ago as a dying town and an eyesore. Change means progress and without progress the town will stagnate. I started with a question so will finish with one- what next?

Councillor Craig Weir

PADDLERS PARK

SADLY, not repaired this season, but technicians have assessed the parts needed for the water feature hand pump and these will be in place for next season; the leaking valves will be checked and we hope repaired for then too. An assessment of the trim trail equipment has been carried out and NCC are negotiating with the manufacturers to come to a satisfactory conclusion so that either proper repairs are undertaken or items replaced by next season. We continue to push hard to get this highly unsatisfactory situation resolved but as NCC were project leaders and the main financial source any resolutions rest with them.

WEST CEMETERY

THE WORK on the boundary fence with the Gloster Hill residential development is taking place at the moment. The small extension to the cremated remains area now has soil and will be grass-seeded to blend in until it is needed. The spoil area fencing should be in place soon with a hawthorn and cotoneaster hedge planted in front to give a pleasanter view and to attract insects and birds to the area. The seat near the current burial area (M) has been removed as it has fallen into disrepair and become unsafe. The one on the drive although in a poor state is still safe but will be replaced soon. The trees in the cemetery are regularly inspected by a specialist so that any obvious damage or disease is spotted and attended to; however, in the recent gales one opposite the old office building was brought down over the drive. The debris was removed as soon as the weather permitted. To try and prevent frozen pipes and thus expensive repairs, the water to the taps up the drive will be turned off from November to March, but the water butt beside the building will remain in use.

SOUTH ROUNDABOUT

Like many of you, Council was dismayed to see some of the trees here removed especially as we had objected and understood the NCC Ecologist agreed with us! However before the applied for discharge of landscaping conditions was approved, indeed while a revised scheme was being drawn up, out came the trees! Council has complained strongly to NCC and Arch (Advance Northumberland) and wait to see what actions are determined for this breach. Sadly the old trees have gone but hopefully at a minimum they will be replaced.

TOWN COUNCIL OFFICES, FOURWAYS 2, AMBLE. NE65 0DT Tel: 01665 714 695 www.amble.gov.uk

Email ask@amble.gov.uk Twitter: @AmbleTC Facebook: www.facebook.com/AmbleTownCouncil

Office hours: 10.30am-12noon & 1.30-3p.m. Monday to Friday Vicki Smith, Town Clerk Minutes available to view in Office or online

Amble WI Christmas Fair

At the Parish Hall Dovecote Street on Saturday 10 November, beginning at 10am. There will be craft stalls, bric a brac, clothes and cakes. There will be a tombola and raffle. Tea/coffee with a cake will be served. Entrance £1.

Amble Pin Cushion

The business at 20 -22 Queen Street hosts a series of groups and course including: Beginners Quilting 11Oct, 8 Nov, 13Dec
Knit and Natter (Drop in knitting group) Fridays
Stitch and Bitch (Drop in sewing group) Mondays
Re-model your winter coat, Upcycled woollen mittens
Get to know your overlocker
Crochet for Beginners – Christmas Bunting
On Dec 1 A Small Business Saturday Event which is free
Also Quilting for Improvers: Xmas Table Runner and Mosaic for Beginners

You can get details of all these courses on 01665 714584
info@amblepincushion.co.uk or www.amblepincushion.co.uk

Royal British Legion

21 November Annual General Meeting.

Speaker Carol Johnston – Blind Veterans UK organisation

Remembrance Day will be held on Sunday, 11 November with services at both Warkworth and Amble war memorials.

If you require a Poppy Wreath or other poppy items please contact Poppy Organiser June Watson on 07785 753100 as soon as possible to order in time.

Weekend of dance planned

Amble Sword, a rapper and long-sword dance group now have an active membership of dancers and musicians, drawn mainly from local people. We started out in February this year, reviving Amble's link to this tradition from the 1930s. We have performed at many local events and currently have flyers in the shops to recruit new members.

We are planning a weekend of dance in July next year to provide a colourful spectacle for townsfolk and visitors. There will be dancing, folk music sessions and a ceilidh. We are intending to invite other dance teams, some local, others from further afield to dance at various spots around town.

Matthew Roberts, Amble Sword robertsmatthewa@yahoo.com

Dry Water Arts Christmas Fair

A Christmas fair is being held at Dry Water Arts Centre in Amble on the 18th November 12-5pm and is the perfect opportunity to buy beautiful Christmas gifts made by local artists.

We will also have live music, street food, roasted chestnuts and mulled wine. The fair will be followed by the annual torchlight procession and switch on of Christmas lights so an ideal start to the festive season! Further information about this event and other events, classes and workshops can be found on our website www.drywaterarts.uk Dry Water Arts Centre – The Workshop – Wellwood Street Amble NE65 0FG Tel: 07542 141411

Torchlight procession details

This year's torchlight procession will take place on Sunday 18 November. The parade leaves The Wellwood at 5pm. For more information, or if you would like to be part of the procession, contact Julia Aston on 01665 712929 julia@ambledevelopmenttrust.org.uk

No fireworks at Hauxley this year

Due to concerns raised through recent interpretation of legal liability law, Hauxley Village Hall Committee will not be arranging a fireworks display this year.

Remembrance Day and fireworks

Sun 11 Nov 10.45am: laying of wreaths in Town Square, plus short service and dedication of peace memorial. Followed by service at St Cuthberts.

6.15pm: Ellington Brass Band play and march from Dovecote Street via North Street to the beacon on the Braid.

6.45pm: on Braid, Mayor will read the nationwide exhortation for peace. Beacon will be lit at 7pm, followed by an orchestrated fireworks display to reflect the celebrations at the end of WW1.

Fabulous murals for reserve



Inspired by visits to the reserve where they made bird feeders, a group of young people from the Leonard Cheshire Disability charity has been getting arty at Hauxley Nature Reserve.

As part of the 'Can Do' project, the youngsters produced a fabulous mural, which is on display at the centre. They also took part in mini beast hunts and dissected owl pellets, then went on to produce several smaller mosaics, which have been located around the reserve. Each mosaic displays letters and clues, so visitors will be able to work out what species are being spelt out as they stroll around the reserve.

Alex Lister, Druridge Bay Living Landscapes Manager said: "It was a delight to welcome the 'Can Do' project. Their artwork is wonderful but don't just take my word for it, come and see for yourself."

Radcliffe Club Autumn events

Oct 5 Family night. Free entry 6-9pm

Oct 27 Amble East End Juniors Halloween Party. Free entry 12 –2pm
Michael Jackson and Amy Winehouse Halloween Party tribute night.

£8 in advance £12 on door. 7pm – midnight

Nov 1 Amble Netball kids Halloween disco £1.50 6.30-8pm

Nov 2 Halloween Family night from 6pm free entry

Nov 11 Junior Turner (singer) entry £2. from 9pm

Nov 30 Suzanne Gill Psychic evening £12

Christmas lights switch on

18 November 2018 sees the switch on of the Amble Christmas Lights! This favourite event always draws big crowds to the town. But behind the scenes, making it happen is a year-round job.... Aside from all of the maintenance, repair and creation of new displays, there is also the task of fundraising.

This year, the support we have received has been outstanding. Local businesses love the lights - some giving one-off donations, and some as year-on-year supporters. We have received funding from Amble Town Council, as well as a grant from Northumberland County Council Community Chest.

The Amble Bowling Club and the Inner Wheel continue their support, the WI have donated for the first time, whilst local pubs also raise funds for the lights. And of course, many people collect loose change, and donate in the collection boxes around the town.

Installation of the displays begins on 21 October. We're on the look-out for anyone who can help - electricians and those who can climb ladders are especially welcome!

Please contact Trevor on 711453 if you can help.

Susan Young, Amble Christmas Lights Committee

Warkworth to stage WW1 drama

Warkworth Drama Group will mark the centenary of the ending of World War 1 with a production of **'My Boy Jack'**.

The play, written by David Haig in 1997, will take place in Warkworth's War Memorial Hall, **8,9,10 November**, immediately leading up to Armistice Day on 11 November.

Based on a true story, the play reflects a country at war, and offers a portrait of one family's experience in it. The family in question is that of Rudyard Kipling whose fame was then at its height and who seemed to speak for the whole nation.

This production is directed by Ralph Firth. He said: "A century after that conflict, Kipling's voice is with us still. It is his words on the Cenotaph: 'To Our Glorious Dead', and it was he who coined the phrase, 'lest we forget'. And most people are familiar with his famous poem, 'If'. David Haig's work captures the tension and horror of the trenches and the devastating impact of war on those at home."

Tickets will be on sale at the Village Store, Warkworth and at N&F Young in Amble, as well as on line at Warkworthdrama.org.uk

Rotary notes



The Rotary Club members enjoyed an informative Wine Tasting on 14 August, presented by Rotarian Jim Barrett and was attended by guests and wives of Rotarians. On 21 August the club guests and visitors enjoyed an after-dinner spot by Fred Calvert a renowned and well-travelled after-dinner speaker. On 4 September the club met at the Hauxley Visitor Centre and enjoyed an illustrated talk by the Centre Manager, Alex Lister, who spoke about the building's structure. After the talk, Rotarians were taken on a tour of the area by Rotary Club President, Tim Mason, who is a volunteer at Hauxley for the Wildlife Trust.

The Masons Arms leek show

The only remaining leek show in Amble, this took place over 8 - 9 September. Judged by Mr A Davison. The results as follows:

1st P. Griffiths 360.68 cu ins 2nd C. Johnson 333.74 cu ins
3rd M. Brierley 269.62 cu ins

Peter Griffiths won best leek in show and most improved grower went to C. Johnson. T. Urwin won the 3 onions fresh dug and N. Urwin won the blanch leek and dressed onion.

Special thanks go to all the sponsors. Without their help the show could not survive: Kelly Construction. Peter Stewart. Aston Building Services. Scott Energy Services. Co-operative Society. The Schooner. Amble Gas Company. Cliffwell Service Station. David Flannighan. Peter Donaldson. Simply Scented Ashington. and Amble Garden Association. Special thanks to the hosts Nigel and Amanda.

Peter Griffiths, Secretary Masons Arms Leek Show

Friday Night Live at The Wellwood

12th October: John Knighton	9th November: Adam Waters
19th October: Peter Whale	16th November: Danny Smith
26th October: Dani Kemp	23rd November: Callum Kewen
2nd November: Gary Spalding	30th November: Rhiannon Soulsby

The Wellwood is under new management. See their Facebook Page: www.facebook.com/WellwoodArmsAmble/

Lost Dog brings Juliet and Romeo to Amble

Lost Dog Dance group which made Amble one of the top ten performance venues in "The Independent" in May with its performance of "Paradise Lost", is to return to St Cuthbert's Parish Hall with their new production entitled **"Juliet and Romeo"**

Lost Dog's new show reveals the real story of Romeo and Juliet. It turns out they didn't die in a tragic misunderstanding, they grew up and lived happily ever after..... well they lived anyway.

Now they are 40ish, at least one of them is in the grip of a mid-life crisis, they feel constantly mocked by their teenage selves and haunted by the pressures of being the poster couple for romantic love. They have decided to confront their struggles by putting on a performance about themselves as they recount the story in dance and comedy. Their therapist told them it was a terrible idea. The performance will take place at St Cuthbert's Parish Hall on **Sunday 21 October at 7:30 pm**. Doors open 7:00 pm. Tickets will be available from N&F Young and via the Highlights website. This is part of the Highlights Rural Touring scheme.

Films at the Dovecote Centre

Tickets: £5 for over 18s, £3 for under 18s All under 12s must be accompanied by an adult. Tickets - Pre-book on 01665 713655 or on door

Friday 12 October 2018 at 7.30pm

Three Billboards Outside Ebbing Missouri (15) (115 mins)

Friday 26 October 2018 at 7.30pm

Ready Player One (12A) (140 mins)

Tuesday 30 October 2018 at 2pm

Isle of Dogs (PG) (101 mins)

Thursday 1 November 2018 at 2pm

Mary and The Witch's Flower* (U) (103 mins)

Friday 9 November 2018 at 7.30pm

The Guernsey Literary and Potato Peel Pie Society (12A) (124 mins)

Friday 30 November 2018 at 7.30pm

Mamma Mia! Here We Go Again (PG) (114 mins)

Spooks and Ghouls Week

The October half-term holiday will have competitions, trails and surprises, some spooky, at the Harbour Village. Can you make the best wizard/witch hat and the ugliest lantern?

Sat 27 Oct: judging of the hallowe'en hats will take place at 2pm.

Sun 28 Oct: kiddies rides, face painting, judging the lanterns and at 2pm announcement of the winners of the competitions and trails.

During the weekend the Puffin Theatre Club will be performing.

Look out for the entry forms for the hunts, trails and the Poetry Competition, from 42 Queen Street and the Seafood Centre. There will be three categories for the poetry competition: children up to and including Year 2, up to and including Year 6, and Year 7 and older.

You could even encourage your grandparents to take part!

Bart Rippon, Amble Harbour Village Co-ordinator

Photographic Group's grant success

Thanks to the work of three members of the Amble Photographic Group (APG); John Twizell, Lynn Kerr, and Richard Poyer; an application for a grant was submitted to Northumberland County Council's Community Chest.

On 14 July APG was informed that their application was successful and the sum of £750 was awarded. The money was exactly what was needed for replacing the club's ailing projector. So now its members can enjoy great quality photos projected as they should be, and visiting judges and speakers can see and provide accurate images.



APG is a non-profit organisation with 46 members who meet every Friday at 9am in Trinity Methodist Church on Percy St. Anyone interested in photography is more than welcome to come along for a free taster session. More info at www.amblephotogroup.com.
Helen Holmes, Membership Sec

SPOTLIGHT ON CLUBS & GROUPS

Hybrid Kickboxing Amble

When and where do you meet?

Every Tuesday and Thursday, 6pm-8pm. At the Sports and Development Club (Old Boys' Club)

What do you do in your club?

Circuit training followed by kick boxing drills. There are around 12-18 people per class, and fighting is divided into weight categories. Club members sometimes spar with other clubs.

Is there an age range?

The minimum age is 9yrs

Is there a charge? £5

How long has it been running?

The club was started two years ago by kickboxer Adam White.

He began training in the Sanda style of Chinese boxing, and he set up the club when his coach retired. Adam said: "I started kickboxing to increase my



Members of Hybrid Kickboxing Amble

fitness. Since I began coaching I now have 12 national titles. It's an obsession. Some people need a focus. One club member was struggling with a lack of direction. He could have turned

into a troublemaker. But he's won three championships, he's represented England, and won three world titles in a very short time."

Adam is level 2 qualified

through the British and Chinese Council of Martial Arts.

He's also part of the World Kickboxing Organisation.

Who might be interested in joining your club?

Men and women who want to learn something new, or to try a new way to get fit or increase their fitness. All equipment is provided, and no specialist knowledge is needed.

What's the best thing about your club?

"It becomes an obsession.

Regardless of your background, you become part of the family. It's a totally non-judgemental, non-ego environment."

How do I contact the club?

Email Adam's dad:

Allan White: whitea13@sky.com or find them on facebook: www.facebook.com/teamHKBA/

Business Club moves to Facebook

AT THE September meeting of Amble Business Club, it was decided that due to the limited spare time available to business owners, and that time being differing to all trades, we are

going to go electronic and establish a closed Facebook page for any business in Amble that wants to join, instead of monthly meetings, although social gatherings were not ruled out.

It will be a discussion page, a page to inform business of any courses being run that pertain to business, a page to ask questions of each other, to network.

You will get regular updates on events happening in the town, updates from the various

groups that the business club are represented on.

Look out for Amble Business Community Facebook page and let us all support each other.

Ann Burke

Amble Business Club

B & S DOMESTICS

0772 5305 491
0771 9573 355



Sales and repairs of
• washing machines
• tumble dryers
• electric cookers
• built-in ovens etc

Over 20 years
professional experience



THE PAINT POT
'Painting more for less'

For smaller painting jobs
avoiding the big prices

Ring Bren: 07947 433144
brendanfarrowsmith57@gmail.com

'Discover your full potential in 2018'



Therapies for: IBS – Generalised Anxiety Disorder – Insomnia
Phobias – Un-Resourceful States

Coaching for: Interview Skills
Presentation Skills – Stress
Management – Healthy Team Dynamics

Contact: Alison Arrowsmith
0794 902 6374
alison@thought-org.co.uk
www.thoughtorg.co.uk



Make your Holiday Property Stand Out...

- Professional & affordable photography.
- Friendly, local service & experienced with holiday lettings.

Contact Amanda to find out more:

07506 660486

www.setthescenephotography.co.uk



holidays.co.uk

You will find Hot Holidays in
Amble Post Office, 43 Queen Street.

Come in and see Cally.

Her working hours are Wednesday - Saturday

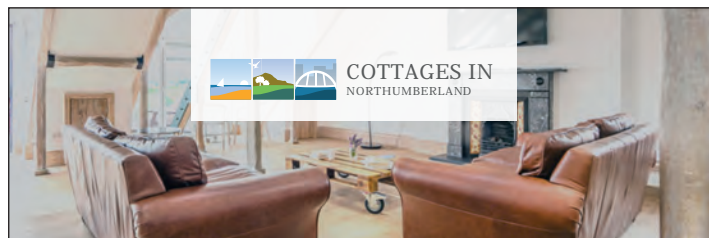
She can be contacted on **01665 517353**



Hot Holidays Amble

E: amble@traveltxt.co.uk

Holidays.co.uk sells travel services on behalf of Hays Travel Limited and benefits from Hays Travel's membership of ABTA with membership number P6692 and ATOL protection.



Join our collection of properties in Northumberland

We've got a dedicated team ready to help you
make a success of your property!

www.cottagesinnorthumberland.co.uk

Part of the  TRAVEL CHAPTER

All the action from Lifeboat Day



Above: Amble RNLI lifeboats with former lifeboat Charles Henry. Below: Donovan Hall (5) with Mark Philips. Crew on inshore lifeboat Mildred Holcroft. *Photos by Andrew Mounsey and Bart Rippon.*



Above: Four year old Bobby McElderry-Bentley (left) won the scarecrow naming competition with "Leonard Longmeadow". He is pictured with his family and Jill Faulconbridge

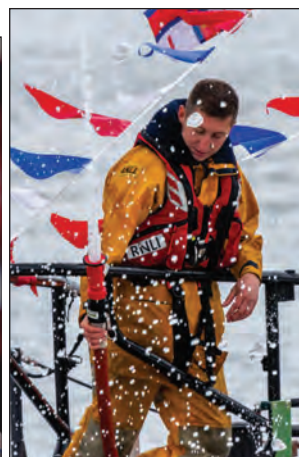
Below: Chair of Amble Lifeboat Fundraisers Jill Faulconbridge and Rev John McDermott at the opening service.



Above: Amble Sword dancing
Below: enjoying the events

The bleak weather during the August Bank Holiday weekend certainly didn't stop people coming out and enjoying Harbour Day hosted by RNLI - Amble Lifeboat Station.

Spectators were treated to two displays from the RNLI crew in the harbour, a visit from a former RNLI Lifeboat, named Charles Henry, stalls and live music. £5,700 was raised to help Amble RNLI.



Above, left and below left: Amble RNLI crew rescue displays
Below: tribal dancing with Tribe Zuza

