



The Ambler

Amble's Community Newspaper

Issue 126 Feb/March 2021

Thousands receive first Covid vaccine

Thousands of Amble residents have been given their first Covid-19 vaccine in the first weeks of 2021, with over 95% of patients in the top two at-risk groups receiving their initial jab.

Staff from Coquet Medical Group (CMG) administered the injections to up to 500 people at a time, in special clinics held at Amble Health Centre. Despite this achievement, GPs say they could do even better, but are hampered by the sporadic supply of the vaccines, and are calling for better delivery systems.

Patients were given their first vaccination in what was described as 'a well-organised operation'. These included over 80s, over 75s, NHS frontline workers such as ambulance drivers, and housebound patients.

Staff at CMG have been praised for their dedication and hard work in administering the vaccinations. The team are aiming to deliver over 1000 vaccines per week, but as Dr Burville explained, organising administration of the vaccine in such huge numbers is not always



Coquet Medical Group were also able to administer the vaccine to elderly housebound patients. Photo: Coquet Medical Group

straightforward, as they only get a week's notice of upcoming deliveries. He described this timeframe as 'inadequate', as it places huge pressure on staff who then have to contact over 1000 patients to arrange for their appointments.

Dr Burville told The Ambler, "Government [is] operating a 'push' system of delivery of vaccine where basically they 'dump' vaccines on practices without any regard to when the practice wants or needs it. This

approach pays no attention to staffing pressures or morale. We need to move to a 'pull' type model where we can specify which day of the week we need the vaccine if available.

"In Amble we are pushing for deliveries every Monday so we can run full clinics every Tues/Wed but to date we get it when it's given to us and NHSE are not facilitating any date alterations ... even when that means we are unable to staff clinics!

"We need set delivery days for sites. This would let us plan ahead. We need at least 2-3 weeks notice of deliveries to plan staff/ patients. Obviously this only really affects Pfizer deliveries where vaccines need to be used within a few days of delivery."

Vaccinations in Amble began at the end of December. The Pfizer vaccine was used in the first weeks; but on 8 January the AstraZeneca/Oxford vaccine was also brought into use. This is proving especially useful for housebound patients, as that particular vaccine does not need to be kept so cold. If the AZ/Oxford vaccine is used, there is no need for a 15 minute observation period after the injection has been administered.

On 11 January, CMG announced that under a directive from NHS England, they have had to cancel the Pfizer second dose appointments, to allow more people to receive their first dose, as soon as possible.

By 22 January, 97% of CMG's over 80s and 95% of over 75s had received their first vaccination.

New outdoor youth space arrives

A new outdoor meeting facility has been provided for young people in Amble.

Amble Youth Project secured funds to provide a covid-secure tipi-style meeting space for youngsters. The tipi is situated in the grounds of the Dovecote Centre, and in normal times, can hold up to 50 people.

Matthew Mahoney, Senior Manager of Amble Youth Project said "2020 was a difficult year for youth services across the country. Amble Youth Project had to pull all of its face to face work last March and moved to online support and home activity packs. In the Summer holidays we moved to very limited work with events, home activity packs and street work.

"2021 however has launched with a bang and we are able to offer limited face to face support thanks to our outdoor youth space. This space is designed to meet the unique situation of Covid19. I am keen to get this used as often as possible."

The £8,000 facility includes heaters and mains electricity, and will be available to hire for other community groups. Funding came from the National Lottery, County Counsellors Terry Clark and Jeff Watson, Amble Town Council and Northumbria Police's Violence Reduction Unit.

The youth project are now able to work with small groups of young people - which is allowed under Covid lockdown restrictions.



Youth workers Matthew Mahoney and Sue Morris with the tipi

Matthew said, "Currently we are running our support groups for children and young people who really need somewhere to go, something to do and someone to talk to. We have some spaces left-

if you know a 8-12 year old who is struggling with lockdown, it might be something we can help with."

Contact Amble Youth Project on info@ambleyouthproject.org
Anna Williams

Your home sale's in safe hands

We helped over 5,000 customers move home safely during lockdown, and we're not stopping now.



We're always open

Yopa hasn't lost a single day of award-winning service during the pandemic. Whatever happens, we're here to help you move with our in-person and virtual services. Plus:

- Sell your home on average **25 days faster**
- Save an average of **£7,600** with our fair fixed fees
- Stay safely informed with YopaHub, our simple online tool.

Award winning estate agents, fair fixed fees.

Contact your local agent **Elizabeth Humphreys**
on **07713 072 306** or at **elizabeth.humphreys@yopa.co.uk**



Best
Online
Agent



Best Online
and Hybrid
Agent



UKCCF
Gold Award
winner



Visit yo.pa/safe-hands for more information.

Yopa
A Smooth Move



© 2020 Yopa Property Limited Registered in England and Wales No. 09120252 Registered Office: Suite 4, Building 4, Hatters Lane, Watford. WD18 8YF

Shellfish company joins London protest

Coquet Island Shellfish took part in a protest by seafood exporters in central London on Jan 18.

The Amble-based shellfish business which employs around 70 people, joined dozens of others from the UK seafood industry to show their anger over the disruption to their exports to the EU. With the implementation of Brexit border controls and checks, long queues have meant delays at ferry ports.

Michael Orr from Coquet Island Shellfish who took part in the protest, told ITV news: "All the breakaway checks and stuff like that are beyond a joke. We can't get anything over the border into France or Spain. It's just different aspects of the paperwork, it's too much. It was supposed to be all sorted when Brexit got done."

Lorries from the Scottish and English seafood industry drove



Coquet Island Shellfish joined in the seafood exporters' protest. Image courtesy of ITV Tyne Tees

around Westminster in a show of strength, protesting at the new export regulations and extra paperwork. Seafood industry officials say that the amount of new red tape and the time it takes to check each consignment, means that fresh produce will go off before it can be delivered.

They say that shellfish exporters are being particularly

badly hit and some have already lost tens of thousands of pounds. If the delays are not addressed, they claim it will put many of them out of business.

PM Boris Johnson pledged £23m to help businesses if they are affected by bureaucratic delays 'through no fault of their own'.

Anna Williams

Car park saga finally reaches conclusion

After months of negotiations and an eleventh hour collapse in the sale back in October, Amble is finally set to have its town centre car park.

The sale of land at Turner Street has now been agreed between land owners and Northumberland County Council (NCC). Planning consent to turn the site into a larger car park, has also been secured.



Land at Turner St has now been secured for a larger car park

Land owner Eileen Baron told The Ambler, "I'm just pleased it's all done and we reached an agreement."

The site includes the current Turner Street car park and adjacent land. A new car park will be created, combining the existing and new parking areas, increasing the number of spaces available from 49 to 134.

The old bungalow will be demolished to make way for

the additional parking spaces which will include seven disabled spaces and six bays for electric vehicles. Spaces for motorcycles and pushbikes will also be included, and the cycle route will be altered slightly. Drainage, lighting and access to the site will also be improved.

Recreational vehicles will no longer be allowed in the car park and a height restriction bar will be installed.

Chair of Amble Business Club Ann Burke, who has campaigned with others for better parking provision in the town said, "I am thrilled for the residents and businesses in Amble that this has eventually come to fruition and hope everything is now in place for it to go ahead. It has been a long frustrating struggle to bring it to this point."

In 2012 over 3000 people

signed a petition in one week, calling on the county council to address the lack of long term parking and the constant threat of parking enforcement wardens on Amble's Queen Street where parking is restricted to one hour.

A parking group was set up with members of NCC, Amble Business Club, Amble Town Council and Amble Development Trust.

But despite regular meetings, progress was slow. The lack of suitable land in the town centre was cited as being the biggest stumbling block.

Cllr Glen Sanderson, council leader and cabinet member responsible for local services and the environment at NCC added: "These are major milestones in providing the community of Amble with important new town centre parking."

"We have been working on this for a number of years now – looking at different sites and options - and I am extremely pleased that we have now reached this stage."

"We will now start to progress the arrangements for site clearance and firm up the schedule and timescales for construction of the new car park."

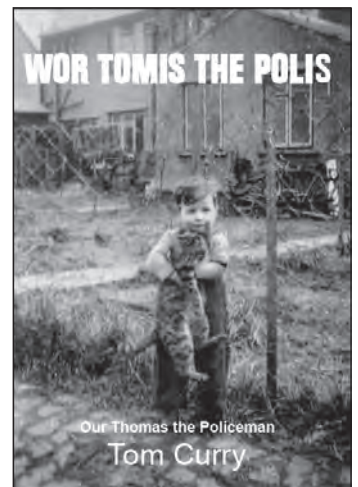
Anna Williams

New book release

'Wor Tomis the Polis'

Tom Curry was born into a dying coal mining community in Amble, Northumberland and was the first family member to break with tradition not to go 'doon tha pit'.

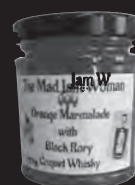
Read of his poverty-stricken childhood in the 50/60s and of his basic pit village education, leaving without any academic qualifications at the age of 15 years. This book charts his early working life on the railway at the busy mainline station of Darlington the birthplace of steam travel and at a time nearing its end.



Read how he joined the Sussex Police and his encounters with major criminals, inc. those who had murdered, his time as one of the first armed officers with the force, as a gaoler when the UK prisons were overwhelmed and how his loyalties were tested during the Miner's strike in the 80s.

Glad times and sad times but always buoyed by his love of humour, this book is full of fun and anecdotes.

THE MAD JAM WOMAN & Pride of Northumbria



Award winning Preserves & Relishes

Fourways One Bridge St, Amble NE65 0DR 07766 857680

Also available at the Seafood Centre

www.madjamwoman.com

Sorry to see...

We're sorry to see PARRT has announced it will be closing. Sheila Poole, chair of the People's Animal Rescue & Rehoming Team (PARRT) told The Ambler they were sorry to be closing.

However, age and health issues for some of their volunteers meant they had no choice, but to close the charity down, after running for over twenty years. Their shop in Queen Street will close in February.

"We're all a bit sad, we've been doing it a lot of years," Sheila told The Ambler. "PARRT was established in 1998. The shop is based in Amble, but we helped animals from anywhere - we once rehomed a dog from London."

Messages of thanks were left on the charity's facebook page, with dozens of photos and stories of rehomed cats and dogs making such a difference in people's lives.

"Over the years we've rehomed thousands of animals," said Sheila. "A few years ago the total was about 16,000. We stopped counting then. And it wasn't just cats and dogs, all sorts of animals - even a lizard! It's sad to stop, but it's nice to know we've helped."

Happy to hear...

Co-owner of The Galley James Leighton, told The Ambler that the family-run business was planning to double its workforce, and despite the challenges within Covid restrictions expansion opportunity was too good to miss.

"We hope to open the new shop in Alnwick early in February offering everything we do in Amble. By doing so it will mean that we will be doubling our work force, but not only

that, we will be investing more heavily with our local suppliers. I must personally thank our local and loyal customers. As well as keeping our menu the same during lock down we are also offering a free delivery service daily. We are proud of where we are now and what we have achieved in a short time".

The Galley's outside catering service has also provided meals to critical workers in the area, and more shops are asking to sell their products.

James was full of praise for his staff and family. "Please can I also say thank you to our great team of staff at Amble who have worked hard during the pandemic adding fantastic and friendly service to our customers."

He added, "My mam and step dad have been an inspiration and rock during growing the business. I'm sure they look forward to retirement at some point but maybe I'll have more expansion plans before they get there!"

Protect your pooches from dog theft

Almost every dog owner knows that dog thefts are rising as a result of a growing demand for dogs and puppies during lockdown. Being able to make up to £3000 for a dog, or tens of thousands for a prime dog that can provide two or three litters of puppies, means thieves are seeing this as a quick way to make money.

It's made worse in the knowledge that the fines and punishments for dog theft are ridiculously small (typically £250) and the courts see a dog as something no more than a bicycle or a bag of sweets. However to a family, a dog is a huge part of their lives.

A non-profit campaign (The DogHorn Campaign) was set up in late November 2020 to bring

awareness to the local area of dog thefts and to help educate dog owners in an area of dog theft in the few seconds before and the minutes straight after a theft or attempted theft. It's advice gives a greater chance of preventing a theft through a number of different strategies.

Campaign organisers say that the key to success is through visibility, teamwork and having devices that will generate a warning sound.

To learn more visit Doghorn's website, www.doghorn.uk or join their facebook page @doghorngroup. It's a site dedicated to help dog owners prepare for avoiding a dog theft, and prepare for one just in case it happens.



Apart from stocking products and providing excellent advice, it is also helping with petitions to make the much-needed changes to the Law to increase fines and sentences for dog theft.

See more at www.doghorn.uk

Harry McQuillen's

Age of insecurity



The shifting sands of Covid occupy much of our thinking time. Stories of lockdown, fake news, sickness and death fill the news media. TV appearances by the Prime Minister and his medical advisors appear on our screens with great regularity. With the best will in the world, it's so easy to fall into a sort of pessimistic trance.

Many of our problems are much more longstanding. Recent discussion of what's happening in the lives of many of our younger citizens perfectly illustrates the challenges we face as a society. We all wish that we could wave a wand to make it all better.

It's said that our trust in our politicians is at an all-time low. Simple answers to complex

problems have never worked. Have I heard that line before?

We all muddle through the maze of life in our own sweet way. Perhaps it should amaze us that many of us make it to threescore-and-ten (and well beyond that!) with a mixture of joy and sorrow.

Education is a truly knotty problem, or series of problems, and it always has been. We don't do very well in comparative league tables, apparently because we don't focus enough on literacy, numeracy and rote learning. People who live in affluent areas send their offspring to schools whose exam results surpass, on average, the results of their less affluent compatriots. What a surprise!

Health inequalities are obvious if we look at the

statistics furnished by a whole industry which looks for trends. When we focus on real people and their individual lifestyles, we find that differences are based on factors other than geography. "We are all Jock Thompson's bairns" – a right old mixture!

As herd animals, we tend to do things with others. Recently, celebrations, especially in urban areas, have led to a steep rise in Covid infections. We all feel for the NHS workers who have to deal with the backlash, as well as the incidence of Covid related illness and death within their own ranks.

My first Covid jab on 29 December was fine. Perfect organisation led me to a medical room, questioning, jab, seat in a heated tent for quarter of an hour and dismissal. Full rollout

will take time, but I'm sure the whole routine will be worthwhile.

Thank heavens for our scientists, medics and the administrative staff who pull it all together. We must be patient.

I propose, not for the first time, that we count our blessings, be sensible in all that we say or do, and try to muddle through the problems that lie ahead.

Winter weather rarely lifts the spirits. I never feel quite right when I'm caged for very long. I always feel better when I've done my morning exercises. Pictures of elderly Chinese citizens doing their Tai Chi exercises in the open air should inspire us all. Could we do it here? Answers on a postcard please.

Harry

Update from Amble Food Bank

The new year has brought us another lock down, but we wanted to concentrate on the positives of 2020.

Food parcel requirements have gone up by 300% over last Christmas and we delivered 93 Christmas day meals, all ready to be prepared by the families themselves.

None of this could have been accomplished without the volunteers collecting, sorting, and delivering the food, nor without the generosity of the public, companies and organisations who donated food, presents and money.

The whole community has come together to help those in need, through no fault of their own, and it has been this generosity and goodwill that has helped us all get through 2020.

As an individual who has had to self-isolate with my wife, I feel very grateful to those who have given their time to help us.

Towards the end of 2020 hubs were set up to help various organisations, including food banks, to coordinate their work in a more structured way. This

helped to get the donated food to the families in need. The local voluntary groups have been working well together even before 2020 but have come into their own after the first lock down in March 2020.

We, at the Amble Food Bank, feel that we have served the community of Amble and the surrounding area well and can all be very proud of what we have achieved.

We feel with the second lockdown more families are going to need our help in the weeks and months ahead.

Individuals to be thanked, on behalf of the families who have received parcels, include Rachel Cook, Julie Baxter, and all the volunteers. We further thank Rachel for requesting toys for children in need this Christmas.

We would also like to thank the local community for food donations directly to us or to Morrison's, the Co-op and The Galley on Queen Street.

We also wish to thank Morrisons Amble, for supplying packed lunches, Bertram's in

Warkworth for supplying packs, and Sharon Crisp from Crispys cakes and cookies for supplying packed lunches for children in need during October half term.

Our Just Giving page has been extended so those who want to donate in this way may do so. (See link below.)

Once again, organisations and volunteer groups have helped with advice and referrals from the community. These include locality coordinators from Northumbria Healthcare, Amble Town Council, Alnwick Social Services, Northumbria Police, and Isolation Support in Amble and Surrounding Area.

Continued support is still very much needed for those who require our service. We hope the community will continue to donate as they can, as we feel we are still a long way from normality.

Wishing you a better New Year to come.

Bill Cruickshank
Coordinator Amble Food Bank

Amble Food Bank's Just Giving page: <https://bit.ly/2LreOJZ>

Seafarers memorial

A new memorial is being proposed by Amble Town Council, to commemorate those seafarers "who help everyone in times of conflict, hardship and danger despite the perils they face and the ultimate sacrifice they may be called to make."



Some of the objects which could make up the new memorial

The structure, comprising a bollard and two anchors, would be situated in the town's Memorial Gardens. You can see the design on Northumberland County Council's planning site, ref: 20/03503/FUL
See also p12.

Sullivan Associates

CHARTERED BUILDING SURVEYORS

Offering professional property advice throughout Northumberland

Building Surveys, Defects Inspections
Plans drawn for extension and new build
Planning Applications, Building Regulations Approval
Disabled Access Advice, Party Wall and Boundary Matters
Design and Project Management

Tel: 01665 513010

Email: info@sullivan-associates.co.uk

Fourways 2 6 Dilston Terrace Amble Northumberland NE65 0DT



TELEPHONE ORDERS WELCOME

01665 710 442

MONDAY TO SATURDAY: 11.30AM-9.00PM SUNDAYS: 11.30AM-2.30PM

★★★★ NORTHUMBERLAND COUNTY COUNCIL

1 BROOMHILL STREET AMBLE NORTHUMBERLAND NE65 0AN



Expertise
Wills and Wealth

PROTECT YOUR FAMILY ASSETS

Long Term Care • Third Party Challenges • Divorce
Business Failure • Sideways Disinheritance

LASTING POWER OF ATTORNEY in areas of
Property and Affairs • Health and Welfare

Make sure you have them in place while you're fit and healthy

WILLS Simple Wills • Trust Wills • Free Reviews

PROBATE Call us for Expert Help and Advice

PENSIONS Do you have pension pots scattered
here and there? Now coming up to retirement?
We're here to help you go through your options.

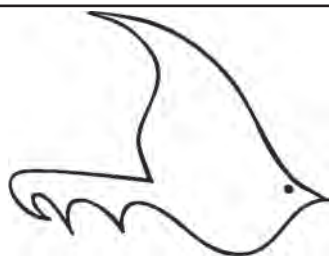
A MEMBER OF THE WILL WRITING SOCIETY

Ring Enid: 07772 182 130 • 01670 855 768
for a **FREE CONSULTATION** in your home



Email: enid.eww@sky.com
Barrister Intermediary and
Member of the Legal Services Guild





The Ambler

Fourways 2
6 Dilston Terrace
Northumberland NE65 0DT
Tel: 01665 712929
www.theambler.co.uk
editor@theambler.co.uk
Twitter: AmbleByTheSea
YouTube: AnnaAtTheAmbler1



Editorial Team:

Vivienne Dalgliesh
Cath Findlay - Chris Herzberg
Norma Hinson
Andrew Mounsey - Bartle Rippon

Editor: Anna Williams

Thanks to:

Mark Beswick & The Artograffi Crew
Judith Hardisty

Distribution:

Charlotte, Sadie, Rachel, Lorraine

Printing:

CBS World, Alnwick

Would you like to join
The Ambler team? We are a friendly
group who welcome contributions
and help from anyone who would
like to volunteer.

Thanks to all our contributors,
sponsors and advertisers:

NCC Community Chest

Rotary Club of
Amble and Warkworth

Inner Wheel Club of
Amble and Warkworth



The Ambler is a proud member of
the Independent Community News
Network



The Ambler is a project of
Amble Development Trust

The Ambler is printed six times per
year. The views expressed in The
Ambler and The Ambler Online are
not necessarily those of
the Editorial Team

Printed on paper from sustainable
forestry in the UK

Outstanding achievement by Coquet Medical Group

The Ambler is always proud to trumpet our community's achievements. In fact we hold our hands up and admit we're possibly a little biased in favour of the Friendliest Port. Although we'll always tell the truth. No fake news here!! But the recent outstanding achievements of Coquet Medical Group really are second to none - and were even mentioned in the Houses of Parliament by our MP.

The Amble practice's vaccination roll-out has been so successful that people in other parts of the country - and some in other parts of Northumberland - are enviously taking notice.

To have provided Covid vaccines to over 95% of the two most at risk groups in our community - in one month! - is an extraordinary achievement. Dr Burville and the whole team at Coquet Medical Group deserve our thanks in running such an efficient and successful operation. It is a shame that vaccine supply holdups are impacting the continuing roll-out. Let's hope this is addressed soon.

Lockdown3 is proving a hard slog for many of us. Our hospitality sector is desperately hard hit. Our local businesses are struggling. We wish each and every one of you the very best for the future.

WHAT YOU SAY...

Saving the town trees

I wonder if anyone has noticed that the centre of Amble has only one mature tree. It's a handsome sycamore behind the Co-op car park, and it's rapidly becoming choked by ivy.

We have recently lost two cherry trees, nearby, to ivy; and unless the ivy is removed from the sycamore, it too will die!

Maybe some crowd-funding could help to keep it alive?

Anne Potts

High St, Amble

Amble Gymnasium patrons

I wonder if you can help me, I am trying to find out anything about Amble Gymnasium Patrons. This goes back to around 1935 and is an inscription on a gravestone of my uncle in Amble West Cemetery. It came to light when a relative was having the gravestone cleaned and discovered the words. 'From Amble Gymnasium Patrons' under his name, so it's possible it was donated by them.

Any help would be appreciated.

Regards, Betty Fox (Mrs) via email

Can you help me find the love of my life?

For four months before Christmas, I had been exchanging texts, several times a day, with a very beautiful lady from Amble, who works for the NHS. I won't give out her name, but her birthday is 30. 09. 55.

I accidentally dropped my mobile phone into the local canal, straight into approximately 10 feet of water, and although I tried very hard to find it, I failed.

The facts I've given you are what I can remember.

I tried the local police in Morpeth, to see if

there's a Community Constable. I've tried the supermarket in Amble. I've tried six hospitals in the area, but they claimed they couldn't help me. I tried the Amble Post Office, twice. I even emailed the hospital radio service, without either success or acknowledgement.

You, and your publication are my last hope, I can't think of a next step. Will you please help, ask, do anything you possibly can, to help me to find her?

K.E. Via email

Boundary change questions answered

I would answer the points made in KC's letter published in the last edition of the Ambler. (Why change the boundaries, p6, Issue 125)

MP's constituency borders changes are handled by the independent Boundary Commission and are not effected by Parish Boundaries.

I am not aware of any significant change in Northumberland to these borders in recent times and there could not have been a "shift in political power" because of them here.

KC asked three specific questions, answers are;

1. The recent requests to move boundaries of the Town Council (not Parliamentary boundaries) came from Amble Town Council and were because they felt the areas involved should be part of the settlement of Amble.

2. The Parish Councils involved were all consulted and views gathered.

3. Some County Councillors at the Council meeting in County Hall (digitally) requested a named vote on the Hauxley boundary but no requests were made for the other application.

A named vote means that every Councillor attending that meeting is asked there and then for their vote on the issue and it is then duly recorded, counted and a decision announced.

Finally, these changes will have no effect on political power but merely will alter Town or Parish council boundaries which are not political wards.

Who will benefit is a relevant question for precept paying residents but it certainly is not a particular political party.

Jeff Watson (Cllr)
via email

Amble swimmer calls for end to sewage dumping in the sea

A 73 year old open water swimmer has called for action to be taken to stop the dumping of raw sewage in the sea. Gillies Owen, who swims several times a week in Amble's Little Shore, is writing to his MP in a bid to end the practice, and he is asking others to do the same.

In our last issue (*Issue 125 p7*) we covered the story of how Northumbrian Water had regularly dumped raw sewage onto Amble and Warkworth beaches - in Amble's case, 62 times in one year.

Gil wrote to the Ambler: "As a regular open water swimmer I have been unable to swim in the Little Shore on numerous occasions this year due to the discharging of raw sewage by Northumbrian Water. Discharge has taken place over 60 times in 2020. This practice presents serious health risks to swimmers and watersports participants as these activities have become increasingly popular. There are no warning notice signs on shorelines to let people know when sewage has been discharged. Hardly a warm



Gillies Owen

welcome to Amble at the Friendliest Port!

"I have e-mailed our MP to ask her to support the Private Members Bill second reading, due soon, and would urge Amble residents to do the same. We have a pride in our town and don't want it to have a reputation for pollution."

On our website, Robin Lewsey commented:

"Several times in recent years the drains in the area of Amble that I live have been overwhelmed and sewage has ended up in our streets and gardens and come very

close to flowing into our homes. How much more of a health hazard must that be to local people?"

"I do not support pumping untreated sewage into the sea but if that is the only solution during periods of very heavy rain fall, I would rather it was discharged into the sea than my living room. I do believe that someone should be responsible for posting warning signs on the beaches when this occurs."

Anna Williams

You can email MP Anne-Marie Trevelyan at: annemarie.trevelyan.mp@parliament.uk

Research on video calls and hearing loss

During the COVID-19 pandemic, there has been a huge increase in the use of video calls as a way to stay connected with others.

Staying connected is especially important for people aged 70 and above who have been advised to self-isolate for long periods of time.

Although there has been a marked increase in video calling during lockdown, for those with hearing loss, technology may not be ideal. Lack of confidence in using technology, or lags between audio and video and sound distortion can make hearing speech difficult and lip reading impossible and may increase frustrations.

A team at University College London (UCL) are finding out how and to what extent older people with hearing loss have been using video calls, focusing on ease or difficulty of use and any effects on feelings of loneliness and isolation.

The UCL team would love you to take part, whether you use video calls frequently or hardly at all and whether you love them or loathe them. You can complete the survey online or fill in a paper copy: See <https://www.ucl.ac.uk/ear/news/2020/nov/research-video-calls-and-hearing-loss>.

For more info: email ear.vcp@ucl.ac.uk or phone 020 7679 8904.

CBSWorld
Complete Business Supplies



Printing Services

Leaflets • Booklets • Books • Newsletters • Posters
Carbonless sets and books • Fine art prints • Invites
PVC Banners • Foamex boards • Signage

www.cbssworld.co.uk

Unit 5 Elm Square, Lionheart Enterprise Park
Alnwick, Northumberland NE66 2ES
Tel: 01665 660022 Email: sales@cbssworld.co.uk



JAG TECHNICAL SERVICES LIMITED

**House Extension &
Full Build Planning
Drawing Services**

**For all your local planning drawing
needs contact us immediately.**

**Friendly and professional
service guaranteed**

Phone: 07549 706774

james.grainger@jagtechnicalserviceslimited.co.uk

www.jagtechnicalserviceslimited.co.uk

2021 predictions



2020 was pretty bad but there's one thing for certain: 2021 is going to be a whole lot worse. Sure, all those inspirational Instagram posts keep saying how it's all going to be fine, but we didn't cross off half the things on our 2020 doom bingo cards, so we're ready for round two.

Here are our 2021 predictions.

January- I mean this has already happened and look how that went. There have been riots in the American Capitol buildings, which have lead to Trump being impeached (again).



February- Crocs go back into fashion after Kim Kardashian wears them to court to get her divorce.

March- 'What Does The Fox Say?' by Ylvis makes it back into the UK charts.

April- Disney buys the moon and begins preparations to make it their new Disneyland destination.

May- Horses go extinct for no apparent reason.

June- The first Roomba gains the legal right to own a house.

July- It turns out the vaccine contained a microchip and now Bill Gates can control everyone over 60 and all healthcare workers. The children are forced to battle the adults.

August- Someone creates dinosaurs from fossilised DNA, which sounds like a good movie plot.

September- The Cheviot hill turns out to be an active volcano.

October- The new Amazon drones become sentient and begin to take over civilisation.

November- Parliament gets blown up, ironically on the 6th of November.

December- Aliens invade Earth and integrate with society, making it surprisingly the least problematic thing that happened this year.

We really hope these don't come true, especially the one about What Does The Fox Say?, but the world is so unpredictable at the minute that there's a high chance that anything could happen. If they do, feel free to send a formal complaint to the Ambler website.

~ Ed: *ex, no please don't.*

By Lily and Ava

Why walking in Amble is the best thing in lockdown



WITH THE NEW restrictions still in place, most of us are in a similar lockdown to the one in March. This means that we're back to staying local as much as possible on the exercise that we're allowed, but luckily living in Amble is pretty good for staying local because, not

to brag, but Amble is pretty much the best place in the North East.

There are so many beautiful places to walk and, although it would be nice to be able to go into a café or visit a friend's house, I keep on finding that I don't mind keeping outside when it's so beautiful out there.

We're lucky enough to be situated right next to the sea, which means that there's always the beach and the dunes to walk along, which is especially relaxing in the morning when the sun's rising (unless you try to walk barefoot in the sea in the middle of January, then it becomes a bit less relaxing).

We're only a mile or so away from Warkworth and



walking along the river is something that I've done a lot of over the past few months, which is especially nice along the path by the castle. I would love to be able to go in the castle again, but it's still magnificent to look at from the outside.

We also 'discovered' several new paths over lockdown- I'm not quite sure how we hadn't walked along them before, considering we've lived in Amble all my life. The fields going towards Hauxley are a bit muddy at the moment, but they still contain one of my new favourite paths.

There are so many places that we all want to go right now and we're all going to feel sad about that from time to time, but it's important to recognise how lucky we are to live in such a beautiful area. The beauty spots and natural tourist attractions that some people are missing so much are right on our doorstep, waiting to be explored, no matter how well we think we know where we live.

By Lily

A day in the life of a JCSC student during lockdown

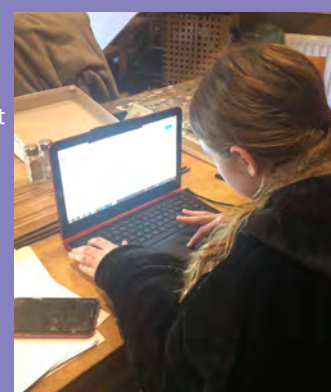


YOUR DAY STARTS at 8:50 for registration and lessons begin at 9:15. The first lesson is 45 minutes then you have a 15 minute break. Lesson 2 is also 45 minutes, then at 11am there is a 40 minute break. Lesson 3 starts at 11:40 and then it is lunch. After lunch lesson 4 starts at 1.15, then there is another break and lesson 5 begins at 2:15. School ends at 3pm.

At JCSC all lessons are live. We use Google Meet to do live lessons, however the set work we use Google Classroom. Lessons are the same lessons that you would do in school if it wasn't lockdown. It is a structured out day and your teacher creates a meeting when your lesson is on so you only join the lessons you have on that day.

This is a lot different to the last lockdown, when we did no live lessons. Another thing that is different is you only did one subject, but this time you do all subjects.

By Megan



Online lessons at JCSC

Is fast fashion a bad thing?



WE ALL WANT the best deal when it comes to shopping, but usually we don't think about what is happening behind the scenes- and often it's not pretty.

Some of the most popular brands- Primark, H&M, New Look, Shein, etc- are fast fashion brands. 'Fast fashion' does not necessarily mean a brand is bad- it means they produce inexpensive clothing quickly and according to new trends, however this can rarely be done ethically as gaining so much profit means you probably aren't paying your workers enough, and selling it so cheap makes this even less likely.

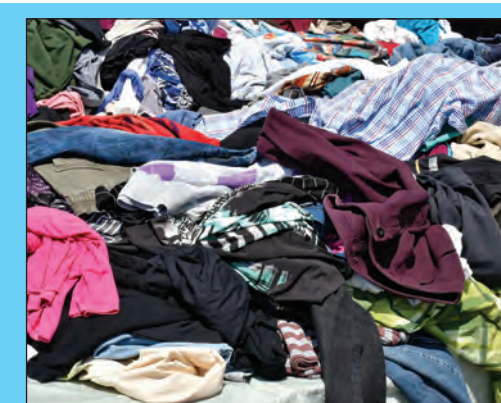
Additionally, because of the speed at which products are created they are often bad quality so you have to buy again and again- profiting the business further. This then contributes to landfills- a report from the Copenhagen Fashion Summit says 92 million tonnes of fashion is sent to landfills yearly and the average western family throws away 30kg of clothes a year.

These figures disgust me, so recently I have been trying to be more ethical in my purchases and encourage you to do the same- it's much easier than you think!

Firstly, charity shops are a great way to shop as you are directly supporting a charity and getting something really nice in return- it's also great to donate to charity shops as they always appreciate it and it prevents your clothes going to landfills.

I enjoy charity shopping as you never know what you'll get, and finding a gem is so exciting.

Another way is upcycling- this just means



92M tonnes of fashion is sent to landfills yearly

turning something you already own (and don't want/ use anymore) into something new and useful- this could be using an old shirt as pyjamas or whipping out the sewing machine and making something new.

Lastly is shopping small. Look for brands that are homemade and local- it can be a little more expensive but it means you will be getting a handcrafted and personalised product. This doesn't just have to be about fashion too- it's always best to do a little research before a purchase and find an ethical brand you enjoy instead of supporting corporate monsters like Amazon.

Understandably, not everyone is in a position to evaluate everything they buy -but remember to be more conscious of who you are funding and don't always go for the easiest option.

If you're interested, I own my own small business selling handmade earrings- check me out on Instagram and Facebook @ ditsy.by.design

By Ava

Hope and Eagle join the wildlife team

Forget Girl Power... Northumberland Wildlife Trust now has Pony Power.

The wildlife charity's Catch My Drift project at its East Chevington nature reserve, started 2021 by adding two new Exmoor ponies to the team from the Flexigraze conservation-grazing scheme.

Better, still, the two, Hope and Eagle, aren't bothered about being added to the payroll, annual leave entitlement or hours to be worked each day as they trot around the 185-hectare site helping their fellow (human) team members roll out their plans for the reserve over the



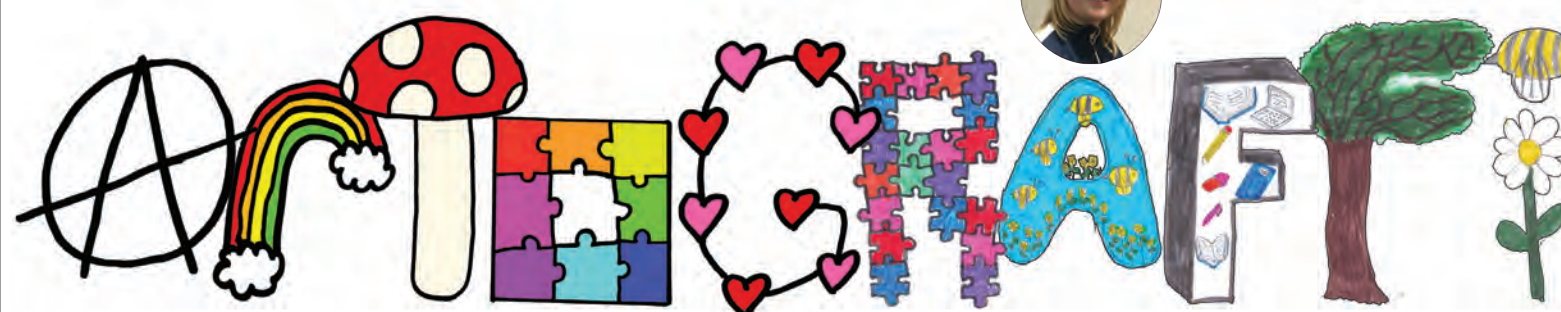
Exmoor ponies Hope and Eagle

next three years.

Speaking about the arrival of the ponies, Catch My Drift Project Officer says: "Hope and Eagle are a wonderful addition to the team and I'm sure, once we're out of lockdown and people start returning to East

Chevington, they will have people looking out for them around the reserve."

"Exmoor ponies are very hardy and happy grazing in most environments and are perfect for conservation so, needless to say, we are really excited to be embracing this technique at East Chevington."



Lockdown and mental health



LOCKDOWN HAS BEEN a tricky time for a lot of people, and it has brought a lot of stress and worry to children all around the world. The Childhood Trust's report says that some children have found lockdown particularly difficult because they no longer have access to support at school, youth clubs, or other things outside of their house. (see www.childhoodtrust.org.uk)

The director of The Childhood Trust

said they are extremely concerned about how lockdown is affecting disadvantaged children. The charity wants to raise £3 million to help over 100,000 children living in poverty in London to recover from the coronavirus. It will be able to provide things like meals, play activities and counselling.

Fresh air and exercise can do amazing things to boost your mood! Try to take some time for yourself each day to go outside - even five minutes can make a huge difference.

Just because you are spending all your time at home, doesn't mean you can't try and stay in contact with your friends and family. That means go on a zoom meeting with friends or far away family!

Having structure to the day can help you feel more in control. Why not set out an easy plan to follow during the weekday - a bit like school? Going to sleep at a regular time is important too to keep you rested and feeling ready to tackle the next day.

By Hannah

Life on Mars



DON'T WORRY, I mean Mars the planet, not the chocolate bar. That would be

weird. Anyways, it's possible we could live on Mars! Sounds exciting, doesn't it. If we did live on Mars, we'd need a lot of supplies, including food and obviously water.

If Earth becomes uninhabitable or anything like that, Mars could be used as a backup planet.

There are a few reasons why Mars is the best planet to live on besides earth since it's soil contains water, the temperature is just right, and there's enough sun to use solar panels, and other reasons.

By Grace



Goodbye to the Queen of the castle

WE WERE SORRY to hear that Janneil Dixon, co-owner of Castle Mania has died.

Many of us have happy memories of fun days and birthday parties in the indoor play centre. Bethany and Megan loved the yellow slide and Friday youth club. The Artograffi team send our condolences to Janneil's family.



Financial advice for cancer patients

With a cancer diagnosis, one of the many concerns you may have is how you will manage financially.

Citizens Advice Northumberland (CAN) has a team of Macmillan funded benefits advice workers who can help you navigate the benefits system to work out what you may be entitled to and help you access it. The advisers can also help you apply for one off grants to help with such things as energy costs or travel costs to hospital appointments.

Rachel Turnbull, Operations Manager at CAN said "We know that living with cancer can be expensive and we want to make sure that people affected by cancer are able to concentrate on their health, instead of worrying about their finances.

"We know of people with cancer who are struggling to pay their bills, cutting back on food and heating or not going to their medical appointments because they can't afford the cost of travel. However, when people get the right help and support at the right time, they have a much better chance of coping with the financial impact of cancer."

Call 01670 339985 Email macmillan@citizensadviceuk.org

Prospect of a camper van parking facility for Amble

Local County Councillor Jeff Watson asked Northumberland County Council to see if they could find a designated car parking area where camper vans could legally stay to relieve the current problem of these vehicles being parked in unsuitable places.

The Council agreed a capital sum of £5,000 to investigate the problem and to determine if it could provide a proper managed site, since there is no appropriate site available in the town.

As a result of his request NCC have agreed to investigate and prepare a proposal for camper van parking on the Braid.

The existing car park adjacent to the Shorebase Trust, which is in Warkworth Parish is deemed a possible site.

Councillor Watson said, "All last summer we saw accommodation vehicles parking in unsuitable places largely because there were no designated spaces available in this area.

"I was aware that quite often vehicles parked overnight near the Shorebase building,



Cllr Jeff Watson at the proposed site on the Braid

and although most vehicle owners were responsible people, there was some concern about refuse being left. I suggested we should look at a short stay site, properly managed, that would be acceptable to the local community and alleviate any issues.

The Council agreed to an investigation so there will be an opportunity for residents to

have their say when a report is completed."

"Covid has changed how we take holidays and more people are taking UK holidays using camper vans. In my view, it will take a long time before we see a recurrence of holidays abroad so I want to ensure that local residents can continue to see the town prospering and still have the use of their local amenities."

MOCHA MONDO COFFEE

CALLING ALL BUSINESSES

We're here to help! If you're looking for ways to help boost business, being able to offer a coffee takeaway service might be the answer.

We offer coffee machines for lease or purchase so you can be flexible with your commitment. If you'd like more information, please get in touch! mochamondo.co.uk
Unit 6C, Coquet Enterprise Park Amble, NE65 0PE

COMES WITH HALF PRICE COFFEE FOR LIFE (1800s apply)

B & S DOMESTICS

0772 5305 491
0771 9573 355

Sales and repairs of

- washing machines
- tumble dryers
- electric cookers
- built-in ovens etc

Over 20 years professional experience

edie pebble

Pod 14 Amble Harbour Village

Beautiful handmade gifts, vintage treasures and nautical decorations

Cromie PHARMACY

Did you know we provide:

Minor Ailments Advice, Travel Clinics, Stop Smoking Clinics, Period Delay, Emergency Contraception & Vaccinations.

Convenient prescription medication supply:

- FREE prescription collection and delivery service.
- We collect prescriptions daily
- Our delivery service covers Amble and surrounding areas

01665 710 896
158 Percy St, Amble, Morpeth NE65 0AG



Reports from our *County Councillors*



20²⁰ has been a tough year all round, Coronavirus and the Government's cynical handling of the pandemic has brought loss and tragedy into many homes. We've seen job losses due to Covid and the restrictions of lockdown have been hard to bear for many of us.

At the start of 2021, we still see a rapid rise in new cases and deaths; we are now being placed in lockdown again (January 5th) implementing a circuit breaker to slow down the transmissible spread.

Positive development in the fight against this pandemic: a vaccine (Pfizer and AstraZeneca)

These vaccines have been approved by the best regulators in the world, since the summer they have been working on the vaccines' data as it arrived.

The Medicines and Healthcare Products Regulatory Agency (MHRA) gave it the go-head after closely examining all the full trial data set which involved around 40,000 people.

The vaccine has been produced much more quickly than others because the medical scientists have been working tirelessly since the start of the pandemic, given the urgency of the situation.

There is no evidence that the side-effects are any greater than a sore arm, headache, and perhaps a mild fever, the same symptoms you can get with the normal flu vaccine. Following the vaccine you will be less likely to get complications or might not have any symptoms at all. You can still get Covid 19 but your body will start to fight it the minute you are introduced to it, and as a result your symptoms may be less or nil.

I would encourage everybody to have the vaccine, we have seen the devastation it can cause. The imminent success on the vaccine front will allow us all in 2021 to come together again.

Terry.Clark@northumberland.gov.uk

You will be aware by now that the County Council has this year completed the purchase of the Turner Street car parking area and also that planning permission has been granted to extend it and add charging facilities for electric vehicles.

I am grateful for all the support from various organisation such as Amble Town Council, the Development Trust and the Business club that they gave to me to ensure that this major development for Amble is realised. I have requested that the development is proceeded with as soon as possible to help relieve the congestion we frequently see in the town centre.

I am still trying to solve other parking related issues that have arisen in the last year or so. I want the town to prosper but I want to ensure that local people still can enjoy the marvellous area in which we live.

It has now been agreed by the Town Council and the County Council for me to sponsor a new interactive speed sign at the existing site on Acklington Road, Amble. I sincerely hope it will remind drivers of the speed limit near the welfare park and persuade them to slow down.

At the time of writing this report (18/1/21) the situation in Amble re covid looks more positive than it has been for a while. We have a very low rate of infection compared to some other areas in Northumberland, which in turn has a lower rate of infection than many other North East Councils.

I hear that the Amble Medical Centre is doing very well and that they are highly efficient with covid jabs and I think they are to be congratulated for responding so quickly and efficiently. We still need to observe guidelines but as a community I am proud we have responded so well to this difficult situation. Stay safe!

Jeffrey.Watson@northumberland.gov.uk 0780 238 5367

Taking your pets abroad post Brexit

As of 1 January 2021 all current pet passports issued in Great Britain are no longer valid for travel to Europe or Northern Ireland.

1. Your dog, cat or ferret must be microchipped.

2. They must receive a rabies

vaccination. They must be older than 12 weeks to receive this.

3. 21 days after the vaccination they can travel. It is important that you keep your pet's rabies vaccinations up to date.

4. No more than 10 days before travelling you must visit us

so one of our Official Vets can issue an 'Animal Health Certificate' to enable you to travel to the European Union (EU). Proof of your pet's microchipping date and rabies vaccination history will be required.

A new Animal Health

Certificate will be required for each journey to the EU or Northern Ireland.

For more information see www.coquetvets.co.uk/pet-travel-after-brex

From the team at Coquet Vets
01665 252 250



**HAUXLEY
PARISH
COUNCIL**

Hauxley Parish

Neighbourhood Plan

The Neighbourhood Planning Steering Group are due to meet to discuss the built environment of the Hauxley Parish within the context of our neighbourhood plan, further meetings are hoped to take place in the coming months looking at natural environment and sustainable and cohesive community ahead of

a further community consultation in early summer.

Precept 2021-22

The budget was agreed for the 2021-22 financial year and a precept request was levied to the County Council for the amount of £5,600.

This is a £1,600 increase on the 2020-21 precept in line with increased costs and an increased budget to fund the work of the

Parish Council who have been working with an excess of expenditure over income for the last few years.

Highways Matters

County Highways had been approached to find out what measures could be taken independently of the Local Transport Plan 2021-22 to manage speeding in the Parish. Discussions are moving forward, including a potential visit to the Parish from a Highways Officer once current coronavirus restrictions are lifted.

The Parish Council are hopeful that further progress will be made in this area once the programme of works for the Local Transport Plan is approved in April.

Dog Fouling

Following complaints of dog fouling near the public right of way from Kirkwell Cottages to Percy Drive Amble, the Parish Council have agreed to install a new post mounted waste bin at the entrance from Kirkwell Cottages. We encourage all dog walkers to please 'bag it and bin it' wherever they are in the Parish.

Amble Bird Trail

A request had been received to include an audio and visual art installation in the bus shelter at Low Hauxley in the Amble Bird Trail. A meeting was held with Amble Development Trust to discuss the installation in greater detail and on considering all the issues the Parish Council have declined permission for the bus shelter to be included.

Unfortunately the timescales to make a decision on this matter were very short, and due to a lack of engagement with the community and the Parish Council during the evolution of the bird trail, made more difficult by coronavirus restrictions, the Parish Council decided that they could not accept the proposal. There were also road safety concerns due to the location of the bus stop. Amble Development Trust were understanding of the Council's decision and thanked them for the consideration.

Future meetings

An Ordinary meeting of the Parish would be held at 6.30pm on Monday 8th March 2021 via Zoom.



Amble Town

All meetings at 6pm via Zoom until further notice - see our website
Town: 11th February 2021, 11th March 2021, 8th April 2021
Amenities: 25th March

COUNCIL

EAST WARD:	Helen Lewis,	Craig Weir	WEST WARD:	Jeff Watson	David Bewley	CEN. WARD:	Jane Dargue	VACANCY
Ian Parks,	5 Meadowburn,	(Chair/Mayor)	Tracey Hinton,	14 Magdalene	11 Brinkburn	Kate Morrison,	10 Sylvia's	
33 Warkworth	Amble	76 Priory Park,	13 George	Fields	Place	3 Island View,	Close,	
Avenue,	NE65 0PH	Amble	Street,	Warkworth	Amble	Amble	Amble	
Warkworth.	07751 229 739	NE65 0HY	Amble	NE65 0UF	NE65 0BJ	NE65 0SE	NE65 0GB	
NE65 0TP		01665 712342	NE65 0RZ	07802 385367	07525713086	01665 711191	07795360513	

2020- 21

What a year we have left behind- so many changes to the way we live, work, shop, socialise. For the foreseeable future Council will have to continue holding virtual meetings via Zoom.

The office will remain closed to the general public although staff, mainly working from home, will call in for essential items and mail.

Please continue to contact us by email or telephone- calls will be returned as soon as possible. If a physical office call cannot be avoided, we ask you to please respect all the precautions. Thank you for your patience.

Let's hope it will not be too long before our wonderful medical staff can arrange vaccinations for as many as possible- we are very fortunate to have such caring professionals looking after us all.

WELL-BEING GIFTS

The Covid pandemic meant 2020 was a difficult year for many with less social contact and interaction with loved ones and others. Council decided to try and bring a little cheer to some of the youngest and oldest in the community. Amble First schools staff decided key stage related colouring books would help their pupils whilst staff at both JCSC sites felt books to help the pupil's literacy would be ideal. Dolphin Care Home recently obtained a DVD player and suggested a selection of DVDs including some Christmas movies and classics would be well received. Hopefully this small gesture will help to relieve any stress and bring a smile.

COUNCILLOR'S CORNER

Two points of view have been mentioned to me over the past year- both relevant to Covid. First, how lucky we are to live in Amble when compared to an inner-city high rise. We have access to gardens, we are surrounded by open spaces and beaches all accessible within minutes. I know it is difficult during this weather to get out, but the maxim applies "there is no bad weather only inadequate clothing." So getting out for an hour and returning cold and wet to stay warm for 23 hours is surely better than staying in for 24 hours!

Secondly, the use of the buzz word "wellbeing"- so many ways of helping ourselves. Some friends, once a week take out their holiday photographs from any year and reminisce about the good times that they had during that break. Why not phone a friend, read that book, cook that recipe, clear out that cupboard, fix that door handle- as I know there are large number of put off jobs. Why not? A Latin phrase covers this "Carpe a Diem" - seize the day. So why not seize the day- enjoy 2021, become vaccine jabbed and covid free. Stay safe.

Cllr Craig Weir

NEW CAR PARK

A wonderful early Christmas present- approval of plans for a large central car park. This, long fought for by many in our community, is something the town welcomes and hopes will not be too long in construction. There is provision for bicycles and electric charging points.

We are aware of the calls for spaces for larger vehicles such as motor homes which are being seen much more frequently on our roads.

It is hoped that after the feasibility study, NCC will be able to look more closely at accommodating these at the Braid area. Alternatively perhaps some enterprising person could look at opening such a facility.

SEAFARERS MEMORIAL

Still being undertaken but delayed due to Covid restrictions on non-essential work as well as NCC planning department requiring lots of extra information. However all the items and work are being donated or carried out by volunteers- a fine example of our wonderful community working with local businesses to produce a long lasting memorial. Also held up- plans for a commemorative board about the Coquet Mouth disaster and the role of Merchant Seaman; however a smaller board has been placed at the end of the pier to mark the 80th anniversary. Stand at the board, look out the harbour mouth and you are looking towards the wreck site.

TREES

Unfortunately due to the gusty winds we have had and will experience, the living trees installed at the Memorial Gardens and High Street will need to remain 'staked' for some months until the roots are firmly established. We are aware that this does not look very attractive- particularly when hazard tape has to be used as a warning of them- but the end result of two magnificent trees for many years to come should make it all worthwhile.

BICYCLES

Just before Christmas, the draw took place from nominations received for the refurbished bicycles. These were originally donated to Northumbria Police just over three years ago to help them access estate areas and be a more visible presence. However, due to manpower and working practices restructuring, they were rarely used. Mike Breeze, who had originally supplied them for the Council, offered to fully service them for free so they could be gifted again. The two recipients, who both work locally co-ordinating help and assisting the elderly and vulnerable in our town, were highly delighted with their new wheels.

KEEP OUR TOWN TIDY

Amazing how fewer people out and about seems to have done little to ease the litter problem throughout the town- added to considerably by irresponsible dog owners and those discarding used masks. For all our sakes, please put litter, especially dog waste, into bins.

HIGH STREET GARDENS

The new living tree means that the annual bedding display cannot be placed in the central area as the roots will likely make it unsuitable, so this will be grassed over.

The rear wall will have variegated laurels planted to brighten the backdrop.

Meanwhile Council are considering removing the foundations where the wall was alongside the footpath and placing a planting border there as another colourful welcome to our town.



Welcome back to Trust Life and into yet another lockdown with stricter regulations looming! But let's look towards lighter, brighter, days – spring is on its way.

From the Events Committee, we hope you enjoyed the Festival of Light in the lead up to Christmas. Drywater Arts have some wonderful photos of the fantastic windows and displays you made. We are lucky to be part of such an enthusiastic community. To that end, we are thinking of other projects that you might like to be involved in.



Andy Sim is retiring

All I'll say at the moment is - Watch This Space!

On the Sculpture Trail front, so far we have managed to keep

progress on track, however the latest lockdown may hamper this, depending on whether artists are able to get to their workspace, or if the fabricators are still working. As the artists come from different areas, restrictions vary. We are hoping that any time slippage will be minimal, but at the moment there are no guarantees.

On a brighter note, applications have been submitted for funds to hold community development workshops. The intention behind this is for the community to be involved in designing an additional sculpture for the trail, and work on developing a celebration event which we hope will coincide with the official opening. This is something we wanted to include from the beginning, but for obvious reasons were unable to carry out. We can only hope that if successful with the funding, that the pandemic situation improves, good health returns

and restrictions are lifted.

The Seafood Centre is now offering a home delivery service for those who cannot get to the centre or are self isolating. If you know someone who may like some fresh fish delivered to their door, just call 01665 713580 to make enquiries. The Seafood Centre is also assisting the Food Bank by offering vouchers to be included in food parcels.

On a sadder note, we are

to say goodbye to our current Chairman Andy Sim. Andy was a staunch supporter of the Trust before joining the board and

served as Vice Chair for many years, before stepping up to the role of Chair when Terry Broughton retired two years ago.



Paul Rigby

Unfortunately

Andy is now suffering from ill health and wants to reduce his commitments, so has decided to retire from 'active service'. I'm sure he will still manage to fill his time in with family and holidaying whenever it is allowed again – he likes nothing better than barging on canals with his children and grandchildren.

So our sincere thanks go to Andy and Mary his wife for the time, support and commitment they have given to not only the Trust but to the town in their many volunteering roles.

Paul Rigby who many of you will know, is our current Vice Chair and has kindly offered to step up to the role of Chair, and Lynne Morelli will step in to the role of Vice Chair. I'm sure we will manage to keep them busy!

Hoping you all stay safe and well in the coming weeks.

Julia and all trust staff and trustees
julia@ambledevelopmenttrust.org.uk

Review of English constituencies begins

The independent Boundary Commission for England (BCE) has begun a review of all parliamentary constituencies in England.

Decisions have been made by Parliament to retain the number of constituencies in the UK at 650 and to ensure that there are roughly the same number of electors in each. England will have 543 constituencies, 10 more than currently. The commission will decide how these constituencies will be distributed among the regions. The total UK electorate is 47,558,398.

The publication of those proposals in early summer 2021 will begin an eight week consultation period, during which the BCE will invite comments to capture the views and knowledge of local residents.

In early 2022, the BCE will also be travelling across England to hear from people in person. The Commission must submit its final report and recommendations to the Speaker of the House of Commons by July 2023. More information will be published on the BCE's website: boundarycommissionforengland.independent.gov.uk/

Lionheart Cleaning

Commercial & Domestic Cleaning Services

Your One Stop Cleaning Service Provider

Our ever expanding teams of fully trained and insured operatives are insured and able to carry out all of the following aspects of Domestic and Commercial cleaning for you, or your business.

Carpets and upholstery	Conservatory	Pressure washing
Windows	Roofs	End of Tenancy
Gutters/Fascias	Commercial	Post Build
	Kitchens	General

01665 713448 www.lionheartcleaning.co.uk



Funeralcare

Our caring staff are here to listen and advise you, 24 hours a day, 7 days a week



Coquetdale Cottage, Queen Street, Amble
Tel: 01665 710437

Photographer of the year



Rose Bowl Trophy Winner: Sin City by David Jackson

The Amble Photographic Group held its last meeting for 2020 on Friday 18 December. The aim of the meeting was:

- to judge the entries for the Rose Bowl Trophy competition
- announce the Photographer of the Year and the Most Improved Photographer in 2020.

In accordance with tradition the judge was Arthur Kingdon. The winners were;

- | | |
|------------------------------|---------------|
| - Rose Bowl Trophy | David Jackson |
| - Photographer of the Year | David Jones |
| - Most Improved photographer | Hazel Bush |

Well done to all of them.

Normally after the meeting we have our Christmas lunch in one of the local restaurants, but owing to the pandemic this could not take place. Instead Arthur Kingdon provided a most interesting presentation on his recent underwater photography.

Thanks to the efforts of our competitions and programme secretaries a programme for 2021 to cover our meetings on Zoom up to May has been published (see our website amblephotogroup.com) as we do not know when we will be able to return to our normal venue at Trinity Methodist Church.

Despite being virtual our meetings are enjoyable, provide a much welcome break from the current situation, and enable us to keep in touch with friends.

Any photographers out there interested in joining our Group should contact me on helenholmes1947@gmail.com.

Helen Holmes

Membership Secretary

Skills support from your sofa

Are you a business needing support to help plan for the future? NBSL are hosting a series of Zoom-based workshops, to help you build better business skills.

Better Business Skills, in partnership with the North of Tyne Combined Authority, will provide a tailored plan for individuals and businesses that need guidance and support to re-invigorate and refresh their enterprise skills and recover their entrepreneurial spirit to help them plan for the future.

Change management, minimising risk and leadership skills are regular features of the programme along with tailored support around branding, marketing, sales and pitching to ensure your conversion rates see a turn upwards.

Facing challenges of this nature requires a particular mindset and sessions have been developed to help individuals and business owners build their skill base to help create resilience and a positive approach to plan for the future.

To see the range of workshops and to sign up, visit <https://www.nbsl.org.uk/better-business-skills>

Armchair travelling with ADEA

Amble & District Education Association (ADEA)

We invite any Zoomers who would enjoy our Spring Term offering of armchair travelling to join us on Thursday mornings for some or all of our illustrated talks by four of our current members. This term, we will be travelling to Ethiopia, Jordan, the Maginot Line and even diving at the edge of the world!

Our Zoom pilot, which started in October 2020, was extremely well received and feedback tells us how much members have enjoyed staying connected and learning in this new way for many of us.

List of courses Feb- March

11 February: Richard Booth - 'St Kilda, diving the edge of the world.' An island archipelago situated 40 miles out in wild Atlantic waters with a fascinating human history and with a stunning under water environment which offers some of the finest diving in the UK.

18 February: Ian Baulch-Jones - Arnhem

25 February: Alan Jones - Zambia

4 March: Liza Cole - 'From Tysties to Tommy Noddies' - the seabirds of the British Isles.

11 March: Richard Booth - 'Hidden Gems of Northumberland part 2'. Local historical sites of Northumberland explored.

18 March: Ian Baulch-Jones - Treaties and their legacy

25 March: Alan Jones - Jordan

There is no need to formally join our group just log in, get to know us and enjoy! You can find out more about us at <https://ambledistricted.uk/or> by contacting Allan Sutherland at asutherland04@gmail.com

Happy travelling in those armchairs!

Rosie Barrett, ADEA Secretary

Rotary Christmas collection

Covid-19 restrictions meant that the annual Santa's Sleigh Charity Collection, staged by the Rotary Club of Amble & Warkworth, could not go ahead in the expected format of street visits.

However, with the support of Morrison's supermarket in Amble they were able to put on a static Santa visit outside the store.

Rotarian Phil Derry drove the Sleigh, festooned in Christmas lights and playing Christmas music which raised over two thousand pounds for local charities with £172 going to Morrison's own designated charity for teenage cancer victims.

Rotary president, Eddie Critchlow said, "Having Santa's sleigh visit is a highlight for many streets in Amble, Warkworth and Acklington. Children love coming to meet Santa and their parents give generously to local charities. Sadly, this year that street-touring option could not be, but the generosity of Morrison's in allowing us to park at their store entrance helped replace that Christmas spirit and helped several local charities."

Mr. Critchlow added, "I am most grateful to the public for their support and especially grateful to Rotarians for manning the Sleigh and collection, braving the cold and rain to ensure we could still raise £2,000 in support for local charities."

Brambles' Better Health award

Congratulations to Brambles who have achieved a Better Health at Work Gold award. The award recognises the efforts of employers who promote healthy lifestyles and consider the health of their employees.

Sally Bryson, Operations Manager at Brambles said, "We have always been passionate about making a difference to our children's lives, the award has reminded us that self awareness and self care are crucial for our early years workforce and enabled us to go one step further and make a difference to the lives of both our staff, families and wider community."

RBL centenary

The Royal British Legion is celebrating its centenary on 15 May 1921, with a programme of celebrations throughout the year. Part of this programme is an initiative: *Telling Our Story* that will make sure that activities will focus on more than just the Legion. It will give opportunities to thank the charity partners, community associations, elected officials, government agencies and services whose valuable support makes it all possible.

The branch needs your help to collect and share the materials and stories that chart the history of the charity at Warkworth War Memorial Hall and the former branch in Amble. If you have been a Poppy Collector or a member of the Legion in the local area, we would love to hear from you. Perhaps a member of your family was a local member? With materials, letters, photographs, and personal recollections we can chart the human story of the Legion over the past century.

The branch has a handful of photographs from earlier days including the one below taken at a party in the early 1940s in the Legion Room at the Memorial Hall:



We have the names of some of the participants in the photograph: Dr John Newton, J Thompson, Danny Blades-Bank Manager, George Yeoman-Dentist, J Robinson-BUILDER, H Henderson, Arthur Henderson-Electrician, Mary Dennison. Bill Gibson-National Coal Board, Bishop Dickenson, George Johnson, Clarence Carse.

The support of the community is vital to this commemoration. We will also contact Warkworth In Bloom team, Warkworth Parish Council, Amble Town Council and Northumberland County Council for support in representing the centenary in the area.

Please send any contribution to June Watson, Secretary of the branch. Email june@jwatson.biz

Amble is going goosey!



The Dry Water Arts Centre team invite you to join in our journey toward change - by way of The Goose. Participate in our online goose related workshops at www.drywaterarts.uk and share your creations in your windows as a symbol of hope, togetherness and support in the current period of lockdown.

Why Geese?

At Dry Water (pre Covid) we would often rush outside to witness what we called Goose o'Clock. This being anytime the honking of geese overhead encouraged us to go look at the wide blue sky, to consider those magnificent formations above us, going about their daily flight paths.

It is a honking call to remember that what holds us and helps us is our sense of belonging to each other and the direction of travel we take together. It is fair to say we do love a goose for what they symbolise about the strength of togetherness, of purposefulness and for their amazing team work. In the past year it has become an increasingly important symbol for us.

So, in the next few challenging months we would like to invite you to go a bit Goosey!

What's Involved?

The idea is simple, and given our communities incredible ability to create and participate, we know that all kinds of unexpected things will emerge. We invite you to make a goose or flock of geese to hang/stick or place in your window throughout this current period of lockdown, to be an outward symbol of journeying together, holding together and our place in the big scheme of things.

As ever, we encourage you to let fly with your ideas and use your creativity and your windows to announce your place in the family of things and to hold fast to our sense of belonging.

For more information about the Going Goosey Project -Head to our website www.drywaterarts.uk or give us a call on tel: 07542 141411 if you find being online difficult and one of the team will drop instructions and templates off so you can participate.

Hauxley Hounds

Professional Dog Walking Service

- **Friendly and reliable service**
- **£10 per hour*** (See our website for details)
- **DBS checked • Fully Insured**
- **Pet Taxi service** (See our website for details)

Contact Mark:
07720 425 027
hauxleyhounds@gmail.com
www.hauxleyhounds.co.uk

Make it look pretty again!

Maintenance and Design

- weeding
- grass cutting, edging
- planting, flower potting
- hedge trimming
- pruning
- landscaping
- paving, fencing

STAINTON Coast & Country Garden Service

01665 798543
AMBLE

Visit us on Facebook

As we described on our front page, the roll out of the Covid vaccinations at Amble Health Centre has been remarkable. Thousands of Amble residents have been given their first Covid-19 vaccine in the first weeks of 2021. The centre also acted as a hub for patients from Warkworth, Hadston, Broomhill, Widdrington and Felton. Staff at Coquet Medical Group worked tirelessly, but they were helped in no small measure by a team of volunteers. We spoke to one volunteer, who described the process:

“ The volunteers were largely from the Isolation Support Group, plus two Well-Being practitioners.

Our tasks included meeting and greeting at the door, handing out leaflets, and fielding other enquiries and appointments. Then someone else took their temperature before they entered and asked if they'd had any symptoms. The Well-Being people logged them in on the computer. Then they sat in the waiting room.

Someone else sent them down the corridor and they went for their vaccination in one of eight clinics. The back doors were manned by volunteers, and they gave out a sticker with a time on saying when they could leave.

They were directed to a huge tepee in the car park, and sat for 15 mins to check no adverse reactions (this is

only for the Pfizer vaccine. They won't have to do it with the Oxford one).

A couple of volunteers supervised the tent, plus a medic. Then they were directed back through the car park. There were also marshalls in the car park helping people park as they arrived.

It was an incredibly well organised operation and they did 500+ vaccinations each of the four days.

It was an amazing achievement by all involved, and the nurses worked so hard. Plus the patients were so positive and grateful that they were getting the vaccination.

There was a lovely atmosphere at the Health Centre. It was an honour to be part of this operation!
Lynne Morelli ”



Above: one of the first patients to receive their Covid vaccination at Amble Health Centre. *Photo: Coquet Medical Group*

Comment from an over-80:

“ I was very excited at the news that vaccines against the Covid19 virus were being produced. I was not only excited, but filled with hope, particularly when at least two of them were approved for use.

I did expect that the 30 - 50 age group would be first to be vaccinated, as it's they who are usually looking after and supporting the younger and older members of the community. However, I did not refuse my first appointment on December 30 and turned up with my husband, Ian, at the Amble Health Centre at the appointed time, having easily walked there. At least I walked and Ian travelled in his electric scooter.

The whole experience was amazing. A large number of over-80s, with varying difficulties, being led through temperature-taking, given instructions, being registered, sat down, made to wait no more than a few minutes, then guided to the surgery where the jab in the arm was given.

We weren't abandoned then but led to the heated tent, sat down, given quarter of an hour and told we could go. And all of this was done with patience and kindness from the volunteers, who constantly gave help and answered questions. Rather than "Hurry along there please", we were more likely to hear, "Be careful. Take your time." The whole process had been well considered and highly organised. From our perspective, it worked like clockwork.

I've spoken to others who have been vaccinated and all agree it was like a military manoeuvre, but carried out in a caring way. One friend had not quite such a good experience the day before mine. Unfortunately, that was a cold wet day and the heater in the tent had broken down! Not something that could be foreseen but obviously sorted out.

Ian and I have been informed that our second jab has been postponed to a date sometime in the next twelve weeks, a message we expected to get. ”



NHS frontline staff were also some of the first to receive the Covid vaccination. *Photo: Coquet Medical Group*

“ I'm sure your post box will be full of letters/tweets/e-mails etc praising Amble's health centre during the current Covid-19 vaccination campaign. It was so quick off the mark to get the ball rolling, and the efficiency with which the jabbing process has been undertaken is nothing short of brilliant. Huge congratulations to all the staff/volunteers for their excellent work.

Colin and Pru Heathcote, Grateful recipients. ”