



The Ambler

Amble's Community Newspaper

Issue 119 Oct/Nov 2019

Tour of Britain

Amble played its part in the recent Tour of Britain, as stage three of the race saw cyclists race from Berwick to Newcastle, passing through the top of Amble in the process.

As the breakaway group powered up the Wynd, Dries De Bondt in the Corendon Circus team was in the lead. Rory Townsend in the Canyon team changed his sunglasses, leaving him at the back of the pack.

Then Harry Tanfield from the Katusha team overtook De Bondt along Albert Street.

Just under four minutes later the peloton passed through, to avid cheers and waving from crowds, which included very



Photo by Andrew Mounsey.
See also p2.

excited children from Amble First School, JCSC, Brambles nursery and Amble Links First School.

The race came to a standstill later on, as cyclists had to stop for a train at Widdrington Station. After a restart, stage three was won by Dylan Groenewegen of the Jumbo-Visma team. 20 teams took part, with 120 riders starting the race.

In sad bike - related news, Amble's Breeze Bikes on the Industrial Estate has now closed; bike servicing will be carried out by appointment only. Contact them via their Facebook page.

Owner Mark Breeze said "This is the end of an era for me and my dad. Three generations of our family have made a living serving the locals but it's time for a change."

Taking back control: one year on

A year - almost to the day - since it closed its doors, the Bede St club has undergone a huge renovation. On 21 September they officially opened Bar 1902, in what was originally the games room, now totally redecorated and remodelled.

"It's been a hard slog to get this far," said acting Secretary Carol Nelson, one of the new committee members who have taken the former working men's club and helped set it back on its feet. "Sometimes it's felt like we've been swimming in treacle, but at last we are here."

The whole building has been transformed from the dated venue that closed after an acrimonious shareholders meeting in September 2018, which then led to liquidators being appointed and assets stripped out.

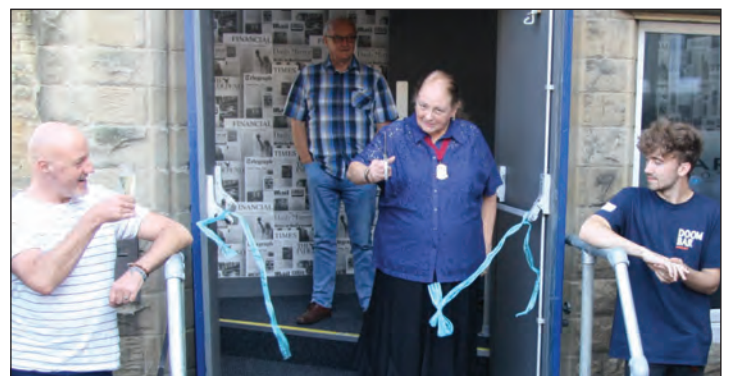
Some of the shareholders, including Carol and her husband George, felt very strongly that the voting system had been unjust, and that the liquidators

had had an undue influence over the whole process. They sought legal advice, and ultimately won the right to take back control of the club, with the original ballot being declared invalid. A new ballot was held and the vote was 390 to keep the club open, with 63 voting against.

Carol and George promised to help set the club's finances straight, and pay for the refurbishment. Together with skilled local workmen, many of whom are also shareholders, work began on redecorating and making the building a welcoming up-to-date venue.

George said, "This has been a project where so many people have helped make it happen. At least 30 people have chipped in. It still belongs to the shareholders, but we've helped bring it back into the black."

The new bar is almost unrecognisable, with an industrial-chic vibe, offering comfortable facilities, a welcoming atmosphere in which to meet friends or a space to



Helen Lewis, Deputy Mayor of Amble Town Council cuts the ribbon

watch the latest football matches. The bar has access directly from the street, where there is outside seating. Inside has internet points, and there are plans to open during the day, offering coffee - perfect for those working in between business meetings.

The upstairs function room, corridors and stairs have all been repainted, the ladies toilets are a pleasure to visit ("people are so amazed they've posted photos on Facebook" laughed Carol), the stairs and corridors are clean and

pleasant, and the lounge area has been dragged into the twenty-first century with the removal of much of the 1980s chintz.

"We just feel we've given back to the people of Amble a building they can use for celebrations," said Carol. "Amble needs a place for large family events, from birth to death. It was a bit of a crusade for me, because I felt an injustice had been done, but I'm thrilled with the progress we've made."

Anna Williams

Photo by Bart Rippon



Above and below: Tour of Britain cyclists on Albert Street, waved on by JCSC and Brambles youngsters. *Photos by Anna Williams*



Are you thinking of selling your home?

Your local Yopa agent is valuing homes in your area

- Fair fixed fees from £889¹
- Rated five stars on Trustpilot based on thousands of customer reviews
- Over 10,000 people trusted Yopa to sell their home last year²

Contact your local Yopa agent
Elizabeth Humphreys on 07713 072 306
or at elizabeth.humphreys@yopa.co.uk

If you refer a friend to Yopa and they sell their home with us, we'll send you a \$100 gift card to say 'thank you' - and they'll get \$100 off their fee.

Yopa
A Smooth Move

1. Terms and conditions apply. Does not include viewings package.
2. Based on prospective sales between 1st January 2018 and 31st December 2018.



Above: Rory Townsend in the Canyon team changed his sunglasses.

Photo by Judith Hardisty Below: Cycling up the Wynd. Photo by Vivienne Dalglish



"I don't know if I want to live here anymore"

Residents of Riverside Park have expressed their anger and frustration with Northumbrian Water and Northumberland County Council (NCC), claiming that they are being left to clean up while no-one will take responsibility for the poor drainage infrastructure, which leaves the area prone to flooding.

During the torrential rains over the weekend of 9 – 11 August, water poured down from Gloster Hill, bursting out of the drains, and leaving the A1068 at the bottom of the Wynd flooded, and parts of Riverside Park knee deep in water.

Once the water levels subsided, Northumbrian Water (NWL) sent a team to hose down the road and disinfect the contaminated area.

Residents of both Mariners View and Riverside Park claim that the authorities refuse to do anything to alleviate the issue.

"I've lived here for ten years and this is the worst I've seen," said Mark Phillips, who lives in Riverside Park.



The A1068 at the bottom of the Wynd also flooded.

Photo by Andrew Mounsey

"The flood water was probably a foot deep at my doorstep, past the air bricks and higher than the damp proof course. It flooded my garage and now I'm clearing up, I don't know whether it's contaminated with sewage.

"I talked to Northumbrian



The torrential rains in August caused deep flooding at Riverside Park. Photo by Dave Burke

Water who said it is nothing to do with them. I contacted Northumberland County Council and they said they didn't know who I should talk to. They did come out and sweep the street."

Mark was angry and said he felt let down by both NWL and NCC. "We should have a team down here telling us what's what. Is my garden contaminated or not?"

Accepting responsibility

Eight years ago, NWL accepted that the drainage system in Riverside Park wasn't good enough to cope with high intensity rainfall events, and that the system gets further overloaded due to the addition of water from Gloster Hill.

A report from management consultants Mott MacDonald, commissioned by NWL in 2011 and seen by The Ambler, concluded that an upgrade to the drainage system at Riverside Park could have been created for £878,000 for a one in 40 year protection, or a reduced version for £520,000 for a one in 5 year protection.

In the report, the more expensive option was deemed too costly. The second version was seemingly never taken forward.

Ongoing development

Concern has been expressed about the impact that 42 new houses currently being built at the top of Gloster Hill will have, once they are connected to the same drainage system.

Conditions were put in place by planners to mitigate flooding further down the hill, but they have not yet been constructed.

County Councillor Jeff

Watson told The Ambler: "It is really worrying that this sewage problem has come back again. Northumbrian Water has assured councillors that the system could cope with the proposed development of new houses on Gloster Hill. I will continue to press for work to be done by Northumbrian Water to rectify the problems."

New sewer for Gloster Hill

In a statement to The Ambler at the end of August, NWL announced they will install a new sewer for the new Gloster Hill properties some time in the future, in order to lessen the volume using the Riverside Park system. They did not comment on why the 2011 Riverside Park upgrade had not taken place.

A spokesperson for NWL said "We are aware of the flooding issues in the Gloster Hill and Riverside Park area of Amble that occurred earlier this month. We have attended the site and carried out investigations into the cause of the flooding, which we understand was caused by extremes of weather and overland flow. We understand how distressing this can be for local residents, and we are monitoring the situation closely."

Anna Williams

Amble Food Bank's music event

The Amble Food Bank organisers wish to thank the people of Amble and surrounding areas for their additional donations over the summer. They hope the trend continues.

An event has been arranged on October 12 in the Masons Arms on Woodbine Street by an Amble singer/songwriter who wants

to generate funds for the Food Bank.

The event will start at 7pm and tickets will cost £10 including a buffet. Tickets are available from the Masons Arms or by contacting the Amble Food Bank email address.

Thanks go to the allotment holders and gardeners for

donations of fresh fruit and vegetables, these donations have been well received by the families in the areas. Please continue your donations.

Thanks also to the Cock and Bull for hosting an event and other organisations that have collected on behalf of the Food Bank.

Local people are asked to carry on adding an extra tin or packet to their shopping and dropping it off at either of the Amble Co-ops and now also at The Galley on Queen Street.

For more information on food items required, or for tickets to the music event, please email: amblefoodbank@aol.com

Kind hearted gifts to Little Princess Trust

On Friday [Aug 2] my 11 year-old daughter Martha, a JCSC student, had an amazing 32" cut from her hair which she is donating to the Little Princess Trust to make wigs for young cancer sufferers. She has always been known for her super long hair, so this is a total change for her. They asked for 16", we planned to donate 20" but ended up with 32"! She has so far raised £211 for the charity as well as donating the hair

Ailsa Dellbridge

My amazing eight year old daughter Felicity Simpson did a beautiful thing today [Mon 2 Sept] for The Princess Trust and I couldn't be more proud of her.

Thank you to Viki Bainbridge for cutting and restyling her hair for free and thank you to everyone for their sponsors and online donations.

Now Felicity can make another little girl smile. She managed to raise £550.

She hit her target!!! Well done Felicity
Kat Simpson



New Lounge Bar now serving cocktails

Readers will likely have noticed the new Lounge Bar situated just along from Jaspers.

The continental-style bar is owned and run by David Langdown and his daughter Rebecca.

The new bar is fully licenced and also sells coffee, tea, cheese scones and cake. David has 23 years' experience in the licencing trade, having opened and run two pubs in Ashington.

Lounge Bar opened in the summer and sells beers, wines,

spirits and cocktails, and David has plans to have live acoustic sessions on Sunday afternoons.

The bar is open all day Fridays Saturdays and Sundays. 9.30am-1.30pm and 6pm-10pm on Mondays, Tuesdays and Thursdays. Closed Wednesdays.

Review: The Stars Look Down

Adapted from the original three books of the novel by A.J. Cronin, *The Stars Look Down*, at the NTC Dovecote Centre, on 6 September.

It is the story of two young pitmen, one a man of principle, striving to better himself, fighting to improve wages and conditions for the men. The other, an ambitious manipulator seeking only personal wealth and praise. It is also the story of the people who surround them; mothers, fathers, wives, employers, colleagues, and the results of actions taken both deliberately and unknowingly.

It is a story about tradition and change, about hope and despair and of dreams and harsh realities. Although set in the 1930's it could also be about today.

The set designed and constructed by Stuart Hanrahan and Amble Men's Shed, added to the claustrophobia of the households and of the mine as it was flooding - it was also a triumph that, although some of the names were local, it could have been set in Wales, Yorkshire or in or near a coalfield where you came from.

The two young pitmen were played with conviction by Louis Roberts and David McCarthy. They were ably supported, as usual, by Stewart Hawson, Bethan Amber, Alice Byre and Gillian Hambleton, who also directed it.

Although the play was ultimately uplifting, there were grown men - and me - weeping.

If you missed this great performance, don't worry, the NTC are performing again in the Dovecote Centre on 20 October at 7-30. Be there!

Chris Herzberg

Harry McQuillen's

Age of insecurity



Tom Shakespeare in a recent 'Point of View' broadcast on Radio 4 said that changing one's mind is not necessarily a sign of weakness. In the febrile atmosphere of the Brexit debate we all have much to consider. As a Very Old Person, I remain neutral. No-deal discussion is filling our media and we can all see why. Have we become a People of the Popular Mandate? Does the condition replace normal parliamentary democracy?

I'd love to be able to design a drug which made everybody really sensible. As I've said

before, the water supply would be a good place to make sure that we all benefitted.

Lack of personnel in the police service has coincided with a reduction in detected crime and in the number of persecutions.

The Extinction Rebellion movement is growing at a time when we're all doing things that damage our planet. Words are cheap, but it won't be easy to change the way we live our lives.

Recent activities have brought publicity to our area. Local, regional and national

press have all given us a lot of coverage. Sports events are an important source of good vibes and spectator involvement. The Tour of Britain has done a lot for our area and many others.

Our population seems to be growing, but I'd be interested to see if the number of local holiday lets is reducing the number of us who live here.

There's always a time lag between economic activity and the promise of the services that are meant to underpin it. Funding is a bone of contention, with no consensus on who pays for what.

We've had a summer of variable weather with a number of events going on. Our Sunday market must be the most popular gathering the Amble has ever seen.

As we move into autumn, that 'season of mists and mellow fruitfulness', I hope for Peace and Prosperity for everybody, especially peace.

One of these days I may turn my thoughts to something original. All ideas welcome when you see me around the town.

Harry

New play area for children visiting prison

Facilities for children visiting HMP Northumberland have been given a fun-filled boost thanks to the opening of an outdoor play area, next to the visitors' centre. It was opened by Alex Nelson from the Clothworkers Foundation, which provided a grant of £20,000 to Nepacs (a north east charity providing family support services to prisons in the area) to fund the play area development.

HMP Northumberland is one of the largest prisons in the UK, with up to 1,348 prisoners, and last year it welcomed 5,084 visiting children. Nepacs has been working with the prison and visitors to improve facilities and support offered to families.

Helen Attewell, chief executive of Nepacs said: "We are thrilled to officially open the new play area and would like to say a massive thank you to the Clothworkers Foundation for their funding and to the prison for their support. Ultimately, we hope that if families are able to visit regularly then contact between imprisoned parents and their children will improve and reoffending rates will be reduced."

Samantha Pariser, Director of HMP



Northumberland said: "This is a real positive for the families of the residents in our care, particularly the young children visiting their dad, brother, grandad or any important person in their lives now in custody in what can be a very stressful environment."

Kim McGuinness, Police and Crime Commissioner added "Having a parent in prison can negatively affect children's mental wellbeing, relationships with their peers, educational attainment, behaviour, financial stability and increase the likelihood of misusing substances or getting involved in criminal activity."

If you are interested in volunteering with the project, email volunteering@nepacs.co.uk or visit www.nepacs.co.uk

Making library service 'fit for the 21st century'

At a recent meeting Northumberland County Council's cabinet agreed that a 12-week consultation will take place to gather opinions on the future of the library service.

There is a proposal to establish a stronger 'digital core' with designated hub libraries in each main area. These hub libraries would coordinate provision and support a network of satellite facilities 'which may be NCC operated, community-supported, community-led or independent'.

Community-supported libraries are council-led and funded, but with significant support by volunteers, while community-led facilities are delivered by the community, usually without paid staff but with council support.

The council 'is demonstrating its commitment to the provision of a comprehensive and efficient library service by planning new libraries in Alnwick, Morpeth, Ponteland and Cramlington'.

The cabinet agreed to spend up to £100,000 from reserves 'to support the transformation of the service over the next 12 months', by buying additional books and enhancing the range of digital resources.

However, the service must make savings of £100,000 in 2020-21 and the same again the following year, which 'will be achieved through a consolidated, more sustainable, network of buildings, increased collaborative provision and a wider digital offer'. It will aim to get the opinions of users and non-users via an online survey, with paper copies available at libraries. A series of drop-in sessions will be held for residents to ask questions or provide verbal feedback.

Ben O'Connell Local Democracy Reporter

Dog lovers wanted

For short stays and holiday cover



Companionship, friendship and fun are guaranteed!

- Dogs to suit your lifestyle
- Trial stays to ensure compatibility
- Full support and advice
- Join our local host community



Barking Mad

Happy Dog. Happy Holiday.
Happy You.



BarkingMad.uk.com 01665 575981



A franchise owned and operated under licence by Barbara Frater & Caroline Bradshaw



The Ambler

Fourways 2
6 Dilston Terrace
Northumberland NE65 0DT
Tel: 01665 712929
www.theambler.co.uk
editor@theambler.co.uk
Twitter: AmbleByTheSea
YouTube: AnnaAtTheAmbler1



Editorial Team:

Louise Brook - Vivienne Dalglish
Cath Findlay - Chris Herzberg
Norma Hinson
Andrew Mounsey - Bartle Rippon

Editor: Anna Williams

Thanks to:

Mark Beswick & The Artograffi Crew
Judith Hardisty

Distribution:

Charlotte, Sadie, Rachel,
Bryan and Lorraine

Printing:

Azure Printers, Pegswood

Would you like to join
The Ambler team? We are a friendly
group who welcome contributions
and help from anyone who would
like to volunteer.

Thanks to all our contributors, sponsors and advertisers:

Co-op Local Community Fund
Rotary Club of
Amble and Warkworth
Inner Wheel Club of
Amble and Warkworth



The Ambler is a proud member of
the Independent Community News
Network



The Ambler is a project of
Amble Development Trust

The Ambler is printed six times per
year. The views expressed in The
Ambler and The Ambler Online are
not necessarily those of
the Editorial Team

Printed on paper from sustainable
forestry in the UK

Town Council has plans to grow

We all know that Amble has undergone a huge
increase in housing numbers in recent months.

Around 1500 new homes are destined
to be built/finished in and around the
Friendliest Port. Not surprisingly, this has
affected the footprint of the town, and
many of the planned houses cross over
traditional parish boundaries.

But, as Amble Town Council points
out, many people believe that areas
such as Mariners View, Gloster Hill and
Rivergreen are part of Amble, when in
fact they are under Warkworth Parish
Council's jurisdiction. Even the Braid
belongs to Warkworth.

So you will see on pages 13 and 16, there are
plans to change the parish boundaries to better
reflect the actual footprint of the town. This may

help in curtailing future development sprawl.

There are other things to consider: If you live
in a Band D rated house in Amble, you'll
pay £116.45 next year to Amble Town
Council. For the same band house, you'll
pay £81.58 in Warkworth, or £40.61 in
Hauxley.

Of course there are many more
facilities in Amble than in the
neighbouring villages. So more money for
Amble Town Council to be spent on our
town may be seen as a good thing.

But if you live - or are hoping to
live in one of the areas which are
affected, you may have other views.

Northumberland County Council would like your
feedback on these proposals by 18 October. See our
map and their contact details on page 13.

BAND D 2019-2020

Pegswood: £139.51
Morpeth: £117.96
Rothbury: £117.05
Amble: £116.45
Alnwick: £109.91
...
Berwick: £77.09
Warkworth: £81.58
Hauxley: £40.61
Acklington: £27.38

WHAT YOU SAY...

Thank you from Amble Lifeboat Fundraisers

On behalf of the fundraisers, crew and
everyone associated with the Amble Lifeboat
Station I would like to express my thanks and
sincere appreciation for the support from the
community towards our annual Harbour Day.
Without this generous support - either from
donations, time or from attending the day - our
event would not be able to raise the much-needed
funds to keep our crew, their kit and lifeboats
working.

Fortunately the weather was beautiful this
year providing a sunny day for everyone to
enjoy the entertainment and RNLI exercises. I
am delighted to say that with your help we have
raised in excess of £5,600 this year. This is a
tremendous amount of money (particularly in the
current economic climate) and your contribution

played a huge part in achieving this.

We continue to raise funds throughout the
year and you will find a warm welcome every
third Sunday of the month at the Lifeboat Station
where we hold a coffee morning 10am - 1pm; we
are dog friendly. Come along and enjoy some of
our homemade goodies, meet the committee and
see some of the work that the volunteers do.

The Fundraisers are always looking for new
members - either on the committee or a more
casual commitment; if you are interested please
contact jill.faulconbridge@gmail.com
With many thanks

Jill Faulconbridge,
Chair,
Amble Lifeboat
Fundraisers



Donation in memory of Monica

I have travelled up from Derbyshire to donate three
cheques to the value of £663.85 to Amble lifeboat
following the passing of my mother Monica Staley
(nee Smith) aged 90 years who was born and bred in
Henderson St. Amble and loved Northumberland and
still has family and friends living here..

She was a supporter of Amble Royal National
Lifeboat Station and participated in the sea training
exercise on the Mersey class lifeboat The Four Boys

on 23 May 2010
and became
an honorary
crewmember
of Amble
all weather

lifeboat. It gives us all great satisfaction to donate
these cheques to this good cause.

Robert Staley, via email

Thanks and request from Sue

Firstly, I would like to thank the Town Council
for honouring me with the 2019 Civic Award.
It was a lovely surprise.

One thing I do is run The Puffin Lounge, a
drop-in afternoon every other Thursday (Sept 5
onwards) in St. Mark's United Reformed Church
Hall from 2-4pm.

This is primarily for people living with
dementia and their carers. However, anyone is
welcome to come and join us for an afternoon of
games, singing, chat, refreshments, and fun. And,
do we have fun?!!!

However, I would like to make a plea: could
you all consider using the term "living with
dementia instead of "dementia sufferers?"

It is so much more positive, and, generally,
when people are diagnosed with dementia, they
can still lead a full, useful life, particularly with
the help and support of their families, friends and
community.

The community of Amble has been brilliant
in helping the town to be dementia-friendly in so
many ways. Despite the town growing so much,
we are still a community which looks out for each
other and offers help in all sorts of different ways.
Thank you to you all, and we look forward to
welcoming you to The Puffin Lounge soon.

Sue Swanston
Amble

>> more letters on p8

We welcome your letters, email, Facebook and Twitter comments for publication. Your name and address
must be supplied, but will be withheld on request. Letters/Facebook comments may be edited.

Your chance to speak up for wildlife



Toad, Badger, Ratty and Mole are asking for your help. Photo by John Gibbon

As part of the national Wildlife Trust's Wilder Future campaign, Northumberland Wildlife Trust is offering people the opportunity to have their say on environmental threats and climate change.

Spurred on by the belief that if action isn't taken now, there will be devastating effects on humanity, the wildlife charity is hosting The Big Wild Debate, one of the most important events it has ever organised.

The event was launched at Northumberland Wildlife Trust's Hauxley Wildlife Discovery Centre by the four stop motion figures from the Wildlife Trust's Wind in the Willows trailer, which featured Stephen Fry, Alison Steadman, Catherine Tait, Asim Chaudhry and Sir David Attenborough.

Tickets, priced at £5.00 and £2.50 are on sale for the BBC Question Time style debate, to be held on Thursday 17 October, 7pm-9pm, at Northumbria University's City Campus East Business and Law Building.

Hosted by BBC Look North's Adrian Pitches, panellists Alan Charlton (Extinction Rebellion, Durham), Jamie Driscoll (North of Tyne Mayor), Dr Mike Jeffries

(Associate Professor in Ecology, Northumbria University), Mike Pratt (Chief Executive, Northumberland Wildlife Trust) and Anne-Marie Trevelyan (MP for Berwick upon Tweed and Parliamentary Under-Secretary of State for Defence) will address environmental topics affecting everybody.

With discussions centering around transport, development, business and climate change, the event is an ideal opportunity for anybody with a passion for nature to find out what they can do to redress the looming environmental crisis and make a personal pledge for a wilder future.

Panelist Dr Mike Jeffries says "Climate emergencies... 'insectageddon'... oceans of plastic... It's a wonder we are still here to have the Big Wild Debate. Why is looking after the environment so tricky, and what can we do (other than move to Mars)? Quite a lot, it turns out."

Fellow panellist, Mike Pratt says "The debate will underline our need to put nature at the centre of society and to act on its behalf with urgency."

For information or to book a ticket visit: www.nwt.org.uk/get-involved/events-and-activities/big-wild-debate

Youth Project update

We are proud of all our children who have made such great personal progression and achieved so much, so to acknowledge and encourage them, we had a special Award Ceremony and lunch at The Wellwood Arms with some of our 8-13 year olds. A brand new Sunflower Award will now be presented each year to one individual as a special way to encourage them along their life's journey. We are grateful to Lady Joicey - The High Sheriff of Northumberland who presented certificates and the award, and made the event more special.

A fuller account of our summer fun and photos can be found on our website www.ambleyouthproject.org

Our giant sunflower which is a part of our Sunflower Campaign is taking shape thanks to some wonderful support in recent weeks by individuals, groups, businesses and churches.

The campaign represents our aims and hopes for our children and young people. Every £1 donated has a square on our giant sunflower which represents how TOGETHER we are investing in the lives of children and young people to support them to grow well and shine.



We are extremely grateful to Trusts and Grants that fund specific activities, but core funding is harder to source, and so we do rely heavily on the support of our local community. We are truly grateful to individuals who have donated and supported fundraising initiatives and to the groups, organisations, businesses and churches who have donated money.

We truly are grateful to the businesses who competed in the Go Go Go Kart event: Northern Structures, The Sand Bar, The Masons Amble, Sam Palin Solicitors (and football team) Sea & Soil Restaurant, Coquet Sports Massage, Northside Surf School and The Wellwood Arms. Thank you to everyone who supported this fundraising effort.

As well as needing money to operate, we need people. We could really do with building our volunteer team to help behind the scenes as well as with activities such as Friday Night Alive. If you could spare a couple of hours a week or a month, then please contact Lara.

For more info, see our Facebook Page Amble Youth Project Appeals or email us info@ambleyouthproject.org
Lara Millar,
Amble Youth Project

Lionheart Cleaning

Commercial & Domestic Cleaning Services

Your One Stop Cleaning Service Provider

Our ever expanding teams of fully trained and insured operatives are insured and able to carry out all of the following aspects of Domestic and Commercial cleaning for you, or your business.

Carpets and upholstery	Conservatory	Pressure washing
Windows	Roofs	End of Tenancy
Gutters/Fascias	Commercial	Post Build
	Kitchens	General

01665 713448 www.lionheartcleaning.co.uk



DO YOU WANT TO PROTECT YOUR FAMILY'S ASSETS?

Protect from 3rd Party Challenges & Divorce and Business Failure, Sideways Disinheritance

Free Advice on Tax Planning on Care Costs

Lasting Powers of Attorney (changed 2007)

Make sure you have them in place whilst you're fit and healthy

NEED HELP WITH PROBATE? Fixed Fee from £1000

Write A Will from £99 or Free Will Reviews

Ring Enid: 07772 182 130 • 01670 855 768

for a FREE CONSULTATION in your home



Email: enid.eww@sky.com
Barrister Intermediary and
Member of the Legal Services Guild



WHAT YOU SAY...

Massive thanks from Brambles



Lee Hope wanted to give something back to the community and is very kindly donating his company's services to redecorate our nursery in line with the Reggio Emilia approach which we are adopting.

We are so overwhelmed with the generosity from both Lee Hope Painting and Decorating and Brewers Decorator Centre in Alnwick that we wanted to share this with the local community.

Brambles has been providing childcare in Amble for over 15 years, we are a community based not for profit organisation and over the years we have reached out to local businesses and the community to ask for help and support with our outdoor and gardening projects, funding and donations for resources for the children.

As if that wasn't generous enough, he went one step further and contacted Brewers in Alnwick for us. Rebecca at Brewers, an Amble local and previous parent was more than happy to support Brambles by donating all of the paint required for our makeover.

A massive thank you to all of the local businesses, locals, staff and parents/carers who have supported us over the years because without your support we would not be here today, and we are so grateful.

*Pauline Donoghue,
Brambles Childcare Centre*

Great fun at Hauxley Fun Day

The August Bank Holiday Monday saw a great turnout at Hauxley Fun Day, enjoying the sunshine, the traditional fun and some of the new attractions.

We are really grateful to all of you who came along and gave your support, we had lots of very positive feedback, thank you!

Thanks also go to Bartle Rippon for doing a great job as 'MC.' The Tenth Avenue Band thrilled the crowd with their music and entertainment and people enjoyed watching while tucking into the BBQ food and Spurelli's ice cream. The local beer from Credence Brewery went down very well, and many thanks to Jimmy Thompson for his painting, this is always a really popular prize.

We got a lot of interest in the history exhibition put together by

local Irene Liddle with photos from Andy Wilkinson. There was a great response from you all taking part in making pledge to reduce plastic on the LitterBugs stall.

More than anything we hope that there is something for everyone, thank you all for coming along and joining in the fun. The day is organised by volunteers and the funds raised are to maintain the village hall in Hauxley, which is available for bookings. This year we also have some Hauxley souvenir gifts on sale, that incorporate a unique and exclusive map of Hauxley designed by Blinkin Imp. Available are Postcards, Tea Towels, Tote Bags, and Mugs, so why not order now for Christmas presents!

Hauxley Village Hall Committee

Rest in peace

After three years the junkies have been kicked out of the West Cemetery, they made a lot of noise. I could hear them from my flat. I go to the West Cemetery to see Jimmy Marshall, Cathryn Elle Miller, Geordie Douglas, Tommy and Eileen Maddern. When I was a young man Jimmy Shand was the man.

I never carry on as the place is a place of rest and peace and quiet. I sit on the seat the Yates donated to their two children.

R. Bramham, Amble

Contrast Music

DISCO ENTERTAINMENTS



For Quality and Reliability
to Suit all Occasions

60s 70s & 80s specialist

Ring Bart Rippon

07964 171 457

THE MAD JAM WOMAN & Pride of Northumbria



Award
winning
Preserves
& Relishes

Fourways One
Bridge St, Amble NE65 0DR
07766 857680

Also available at the Seafood Centre
www.madjamwoman.com

Mary's trip to Mozambique

I had the privilege of being invited to visit Mozambique, as part of a delegation from the Northern Synod of the United Reformed Church, in June. The Northern Synod have partnered with the Independent Presbyterian Church of Mozambique (IPM) for over 25 years.

We travelled to Maputo to visit the main headquarters of the IPM, and visited rural churches to see some of the community projects which the IPM support. The IPM have a team of Community Development Workers who have helped local communities set up a total of 18 projects so far.

The IPM helps finance the projects but leave the running to the local community. The projects include chicken farming, building schools, house building, agricultural and livestock farming, and in some rural areas they are enabling the supply of electricity.

The name of this project work is "LUMUKU", which means "autonomy/independence,

in other words, the community are in charge of the planning and management of the project.

We travelled a total of 200km north to visit several of the rural churches and some of the projects.

The most poignant moment for me, was arriving at a rural village, as the children were returning home from school. As shown in the photograph, the job for many of the children, was to fetch the water from the village water pump, which they carried home to their small dwellings.

Those of us who know the Paddler's Park in Amble know the water pump there which provides hours of entertainment for children. In rural Mozambique, if they are fortunate to have a borehole and a similar water pump, they will get their water from it, to boil



Drawing water from a borehole

up for drinking, washing and cooking. I also visited villages with no electricity. It made me realise how easy it is to take such things for granted.

I was bowled over by the welcome we received, and by the beautiful singing in all the churches and communities we visited. They had no instruments, nor did they need them, they sang in natural harmonies, moving rhythmically and joyfully.

We met the most amazing people who greeted us with such generosity and kindness, it was a truly humbling and wonderful experience. I hope one day to return, as the people I met and the country, captured my heart.
Mary Davison

Fun at Hauxley

A tractor, a time machine and a load of fun at this year's Funday. See p8



B & S DOMESTICS

0772 5305 491

0771 9573 355



Sales and repairs of
• washing machines
• tumble dryers
• electric cookers
• built-in ovens etc

Over 20 years
professional experience

PAW PERFECTION

Dog Grooming Salon
& Well Being Centre



JOANNE PENROSE

07850 540 773

joannepenrose9@gmail.com

2A Church St
Amble
NE65 0DZ

edie pebble

Pod 14 Amble Harbour Village



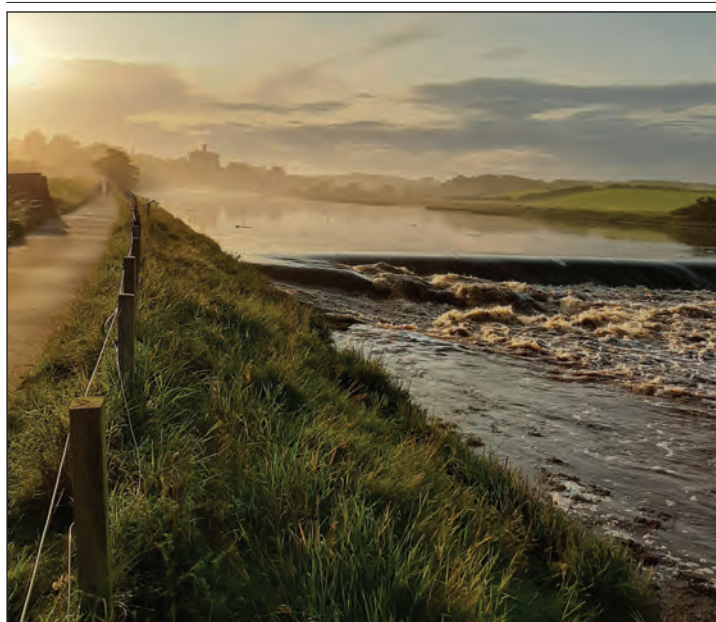
Beautiful handmade gifts,
vintage treasures and
nautical decorations

Blue lobster caught off Amble



Thanks to Maureen Barclay who sent us this picture of a rare blue lobster. She told us "My son-in-law Garry Stewart landed it, it went away with the rest of the lobsters and crabs he caught as he said you don't get any extra money for them. He has since been told that it was donated to a sea life centre in St Abbs."

Ed: We've tracked it down and it's now at the Marine Station in St Abbs



Warkworth Castle in the mist, by Mark Thompson

Open daily
10am - 3pm

MOCHA MONDO COFFEE

PRODUCED IN NORTHUMBERLAND

Seriously good coffee.
Roasted in Northumberland. Enjoyed everywhere!

Retail. Wholesale. Online
MOCHAMONDO.CO.UK

FISHING TACKLE & BAIT



Leazes Street Amble NE65 0FD 01665 713580



STAINTON

Make it look pretty again!

Maintenance and Design


- weeding
- grass cutting, edging
- planting, flower potting
- hedge trimming
- pruning
- landscaping
- paving, fencing

Coast & Country Garden Service


01665 798543

AMBLE

Visit us on Facebook




"FRIENDS FOREVER!"
by Bethany



Puffin was lost and hungry.



Suddenly Narwhal appeared, "Hi Puffin!" he said. Puffin asked "Can we be friends?"



"YES! FRIENDS FOREVER!"



Narwhal offers Puffin a ride on his back.




Puffin says "Thanks Narwhal" and they have a happy journey.



Puffin and Narwhal get a lovely dinner of fish.

Fireworks: The Good, The Bad and The Sparkly



Bonfire night is awesome; the bonfires and the fireworks, but do you know how dangerous it actually is?

Bonfire night brings people together and it is very cool but there are pros and cons about fireworks and bonfires, for example:

- Fireworks are a waste of money and materials
- They can be dangerous if not set up properly.
- Animals are scared of the noise
- They have hurt people in the past
- Children can get hurt by the fire

However, they are great for these reasons:

- They look exciting
- Fun to watch
- Brings people closer together

Here is a question to think about. Should fireworks be banned from public sale?

By Bethany



SAVE THE HEDGEHOGS!



Every bonfire night, lots of poor innocent hedgehogs' homes get **DEMOLISHED** by bonfires!

This happens because hedgehogs build (or find) cosy homes, which could possibly be the logs, twigs and maybe furniture prepared for the fireworks, so maybe more hedgehogs are

"Adventures are about a quest for growth"



"It is going to feel messy; it is going to be uncomfortable; you are going to be filled with self-doubt but that is when you truly see what you are made of"

Anna McNuff describes herself as an adventurer, speaker and mischief maker. She has completed many challenges such as cycling all 50 states of America (11,000 miles in 7 months), running over 1000 miles in New Zealand (then writing a book about it!) and cycling 5,500 miles through Bolivia, Chile and Argentina. But her most recent adventure outshone them all: running from the Shetland Islands to London - BAREFOOT!



Anna McNuff, girl guide Isobel Gray, Ava and Lily

Anna's idea for the 'Barefoot Britain' came because she enjoys minimalistic running (running with very small shoes or just socks) and decided that to teach people about limits she had to push herself to hers. Starting on 3 June, she expects to finish on 10 November - in the meantime she keeps running and posting pictures of her feet! They are battered and bruised especially from horrible gravel paths.

She is a proud ambassador of Girl Guiding and likes to visit the young girls and motivate them to do their best. Lily and I had the privilege of running with her (see photo) - she is amazing! She is so happy and bubbly and inspirational. There are many ways to help Anna along her journey such as housing her for a night or just following her on her social media (see her website for more details - www.annamcnuff.com).

Anna McNuff is incredible, and we should all take a page out of her book!
By Ava

Ozzy the Rescue Dog and the Hurriflood!



Ozzy and Bethany were chilling watching a Halloween series on the TV, eating fried chicken from Bethany's plate.

There was a sudden knock on the door, which was because Bethany's friends, Megan, Grace, Hannah and William wanted to go on a walk on the beach with Ozzy.

"Sure," Bethany said.

Bethany was excited and was looking forward to it so much, that when she turned off the television, she forgot to check the weather, which is very important, believe it or not, because tonight, one terrible hurriflood (hurricane and flood mixed together) would hit Amble's shores...

A minute later, they were all on the beach. "I've got a surprise!" Hannah shouted, so loud that all the birds in a ten-mile radius flew away. And the surprise was a picnic! The most marvellous picnic, but, just as they began to eat, a small breeze started, and the sun's brightness weakened.

They all were aware of a terrible storm at this moment, when a few droplets of rain fell on Ozzy's soft golden fur, the rain got heavier and heavier, until heavy rain started



lashing down, hurting everybody's backs badly.

Then, a loud swirly sound happened. "A... A HURRI-FLOOD, RUN!!!" Shouted Megan.

Water quickly started to cover the whole beach, while jellyfish were surrounding the border of sand and water. Everyone was stuck in a small circle of dry sand, and Ozzy knew he had to do something, and quick.

He dashed on the now wet sand, knowing where to go. He arrived at the RNLI, and barked to his favourite crew, and they could tell what happened, so, in a few seconds, Ozzy was riding on a high-tech rescue-boat.


The water was up to shoulder height on Bethany, and it got deeper by the second. In about fifteen minutes, Ozzy and the RNLI were at the beach, when Grace, Megan, William, Hannah, were swimming frantically away from giant jellyfish.

The second they saw the boat, they jumped on, safe and sound.

One week after the incident, when everything had been recovered, Ozzy got rewarded with a **GOLDEN MEDAL**, and some fried chicken, his favourite!

By Grace

Are you helping to destroy the Amazon?



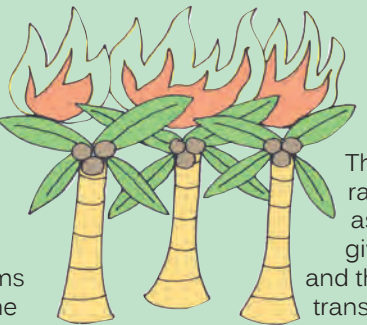
The Amazon rainforest has been burning for a considerable amount of time. It may not seem to concern us in the UK, but the repercussions of this are going to be immense.

The trees in the Amazon absorb lots of carbon dioxide from the atmosphere, helping to stop global warming - currently they contain up to 140 billion tonnes of CO2, which is the equivalent of what humans produce in 100 years. The Amazon also contains 10% of the earth's wildlife species, although it only covers 1% of the globe. There's no way we can fight climate change without it.

The dry season hasn't helped the spread of fire, but the cause is undoubtedly companies illegally clearing the land for agriculture. Cattle ranching is responsible for as much as 80% of ongoing deforestation, destroying critical storage sites for carbon dioxide. One of the main companies that have been charged with illegal deforestation charges is a Brazilian beef firm called JBS, who've reportedly been sourcing their cattle from farms contributing to the destruction of the rainforest. Again, this may not seem to affect Britain, but JBS meat can actually be found in a variety of UK chains.

"Stopping buying this meat could make a big difference"

Lidl, Morrisons, Sainsburys, Waitrose, Iceland, Co-Op and Asda all buy corned beef from JBS, some under their own labels and some under other meat brands. The environmental organisation Friends of the Earth made the link by tracing supply chains of tinned corned beef sold in British supermarkets, finding that they were bought from the Brazilian beef firm with many allegations of illegal deforestation.



This is a really big problem. The burning of the rainforests as well as the methane given off by cattle and the emissions from transporting the meat contribute very heavily to global warming. Even though one tin of beef may not seem like a big problem, every little bit counts. The Amazon rainforest is still burning, and cattle ranching is one of the biggest problems.

Stopping buying this meat could make a big difference, as well as things like spreading the news on social media and donating to emergency appeals that help combat the fires (such as the one on the WWF website). This affects all of us, and we can each do our bit to help, even if it's just not buying a tin corned beef.

By Lily

What makes us happy



Megan: Baking, Eating, Gymnastics, Swimming, Roblox, my phone.



William: Beef burgers, Swimming, FORTNITE (Or any sort of video games,) MY PHONE, Mcdonalds!



Hannah: Many things make me happy and some of them include baking, gymnastics, playing on my phone, spending time with family and playing out with my friends.

What makes us sad

Megan: Amazon burning and people littering.

William: Losing my phone, the Amazon burning.

Hannah: It is very rare that I get sad or worried but some of the things that do make me a bit sad or worried: Seeing people litter, when any of my friends or family are sad, the amazon rainforest burning, and if I burn my baking.



Dilyn the Dog



Did you know someone new lives at 10 Downing St? Only this person has 4 legs! Our Prime Minister Boris Johnson has got a new dog named Dilyn.



Dilyn is a rescue dog abandoned by puppy farmers. He came to Downing St from a shelter in Wales.

Dilyn arrived at Downing Street on 2 September.

There is a cat at Downing Street named Larry who has lived there since Prime Minister David Cameron. He has never lived in the same house as a dog but we hope for the best for the innocent dog as Larry is known to be feisty.

By Megan

Thank you to



THE AMBLE INN

for sponsoring Artograffi



THE
AMBLE INN

GET INN THE *Christmas Spirit*

Join us to celebrate our **FIRST** Christmas!

CHRISTMAS FAYRE MENU 2-24 DECEMBER

TWO FESTIVE COURSES £15 THREE COURSES £20

BREAKFAST WITH SANTA

Saturday 21 December or Christmas Eve

We're ho-ho-hosting some very special events with surprise guests from the North Pole. Every child receives a gift from Santa. Includes delicious buffet breakfast.

ADULTS £12 CHILDREN £6

CHRISTMAS PARTY NIGHTS

Friday 13 December & Friday 20 December

Outrageously good food, superb drinks selection plus your table for the night with fantastic live entertainment.

£25 PER PERSON

NEW YEAR'S EVE

Start the New Year as you mean to go on with a sparkling night including a delicious meal and live entertainment from rock and indie band The Range.

£45 PER PERSON (UNDER 12 £22.50)

**EARLY
BOOKING
ESSENTIAL**
to avoid
disappointment

CHRISTMAS DAY LUNCH

Relax and enjoy the perfect three-course Christmas lunch without lifting a finger (and no washing up either!)

£40 PER PERSON (UNDER 12 £20)

Get your dancing shoes at the ready with our cracking Christmas party nights and scrumptious festive fayre...



Our events and Festive Fayre Menu must be booked in advance. Festive Fayre Menu available daily excluding Sundays and Christmas party nights.

www.theambleinnamble.co.uk/christmas

For more information, a booking form and full T&Cs pop in or email us:

✉ christmas@inncollectiongroup.com

📍 The Amble Inn
Sandpiper Way, Amble, Northumberland, NE65 0FF



Welcome back to Trust Life. This time as I sit writing the Trust Life column, I make no comment about the weather or the dark nights cutting in!

I am sure you will have seen work has started on the retail park on the industrial estate. All we know for sure so far is that the food retailer will be Morrisons and a suggestion of who the drive through coffee shop will be but as yet the other outlets are unknown.

We do continue to try to resolve the lack of parking in the town, and while many offer their suggestions on where a car park should be, I can assure you that every piece of land has been considered, and while there are a couple that are possibilities, they are privately owned and therefore

not readily or immediately available. I have likened the suggestion of 'just putting it there' similar to someone coming along and saying I'll just buy your drive off you and you have no say in the matter! So please consider your comments before posting on social media – car parking is frustrating, especially for those of us who have endured hours of meetings with continued determination to achieve something.

I hope you have managed to view the video made by the Design Council. We've dispersed it far and wide and had some great feedback. Currently it is being used by a small fishing community in Wales to try to encourage locals to set up a development trust or similar

organisation, where they have similar issues to the ones Amble had in the past – lack of employment, investment and opportunities.

And on that note we have just found out the Trust has been nominated for an award for its contribution to the North East. Regardless of whether we win or not, it is gratifying to know our work has been acknowledged further afield.

The town's next event will be the Torchlight Procession. This year the theme will be Flights of Fancy – the events team are working with Frances Anderson of Drywater Arts who will be holding workshops for various groups and schools. If you would like to take part in the workshops and parade

please contact me for more information: julia@ambledevelopmenttrust.org.uk 01665 712929.

Next, we will be starting work on the sculpture trail in the coming weeks once we contract with the successful curator, which we will be doing imminently.

And finally, what did I predict in the last Ambler? – Who would we be voting for by the time the next Ambler comes out. It will most probably be the next PM and Government by the looks of things (if you can follow and keep up with the Westminster antics!). It will all come out in the wash as my gran used to say!

Julia and Trust staff

Parish boundary changes - your views are important

The electoral arrangements of Amble Town Council are currently being examined with a view to amending its boundaries with Warkworth and Hauxley Parish Councils.

There is also a proposal to increase the number of councillors from nine to eleven, with the two new members being split between the East and West Wards.

Amble Town Council has requested the following amendments be made to its electoral arrangements:

- To change the boundary with Warkworth Parish Council to include Rivergreen, Mariner's View, Gloster Hill area to the Farm Cottages and the new housing development.
- To change the boundary with Hauxley Parish Council to include the whole of the sewerage works and the remainder of the adjacent field.
- The total number of members of the Town Council be increased from nine to eleven with the two new members



being split between the East and West Wards. This change would accommodate recent new development and future residential developments which have been approved and could be built within the next five years.

Northumberland County Council has the powers to conduct community governance reviews which can involve creating new, or amalgamating parishes and amending electoral arrangements. The Parish Council has asked the authority to carry out such a review.

The County Council is now consulting with local electors and other stakeholders in the area

about the proposals.

Maps can be found on the county council website www.northumberland.gov.uk and searching for community governance.

If you would like to make your views known, they should be submitted, in writing, by 18 October 2019 to :-

Lesley Bennett, Senior Democratic Services Officer, Democratic Services, Northumberland County Council, County Hall, Morpeth, Northumberland, NE61 2EF

OR E-mail - cgreviews@northumberland.gov.uk
See also p16

Insolvency rates continue to increase

Figures from the Insolvency Service show that the number of people in this country going insolvent due to unmanageable debt hit a seven-year high in 2018.

The North East has been the region with the highest rate of insolvency each year since 2008. It had the highest rate of debt relief orders (DROs) and individual voluntary arrangements, and the joint highest rate of bankruptcy with the South West.

The statistics also show that women and people between the ages of 25 and 44 are more likely to become insolvent.

Rachel Turnbull, Operations Manager at Citizens Advice Northumberland said: "People get into debt for a variety of different reasons and it can be an extremely distressing experience.

Once you are in debt, it can be difficult to get out of the situation and you run the risk of getting further into debt.

What these figures from the insolvency service show, is that you are not alone and there is help available to support you to take control of your finances.

It's always best to talk things through with an experienced debt adviser before you make a decision about what to do".

Contact the Citizens Advice Northumberland Money Advice Team on 01670 339960 or Text DEBT to 81400 to receive a call back within two working days.

Interested in volunteering with CAB? Call 01670 339985.

'Fit for the Future' progress

The "Fit for the Future" building project at St Cuthbert's is developing at a rapid pace. We aim to install a toilet, servery and store cupboard in the west end of the church. Next year (2020) St Cuthbert's Church will celebrate its 150th anniversary. Opened in 1870, each generation has added something positive to the church and we have decided to make the church ready for the coming years. Church is a worship centre, but also a hub for meetings. These new facilities will help us make more of the church for community use.

The builders will start work on 6 January and we expect it may last for six weeks.

The cost of the project is £60,000. So far, we have raised half of this total and we thank the many people and organisations who have heard our call. We now need to make a final push to reach our target and God willing that will be achieved. £30,000 still needed!

Part of the project includes the installation of a new font. We plan to hold a service to commemorate the old font on Sunday 15 December at 4.00pm. We invite everyone with a connection to St Cuthbert's to attend this special occasion. There will be a dedication and commissioning service for the new font in the new year.

This project is being delivered on top of our regular work as church, reaching out to community needs. We have continued to donate money to many charities.

Please continue to support St Cuthbert's Parish Church. Many thanks Amble for helping us make it Fit for the Future!

Rev John McDermott

THE WEIRD, WONDERFUL AND CREEPY WORLD OF THE NORTHUMBERLAND COAST

We are all lucky to have on our doorsteps the opportunity to experience the bounty of fantastic fish which the North Sea has to offer when we head out and about in Northumberland. Lobster, crab and mackerel are some of delights you might have experienced in the Northumberland IFCA district... but what do you really know about them? These are some weird, wonderful and somewhat creepy things to learn this Halloween about the creatures which call the North Sea home:

European Lobster

The most commercially important species in the Northumberland pot fishery is the European lobster. With eight legs and two large claws a lobster's prey has something to be scared of. Lobsters carry their eggs on the underside of their tail and the eggs change colour from black to orange/brown as they develop. If you look closely at eggs which are almost ready

to hatch you will see thousands of tiny eyes staring back at you. And not to be forgotten... it can regenerate its own limbs!

Weeverfish

Lurking in the shallows in summer months is one of the most dangerous fish in UK waters, the weeverfish (Lesser Weever *Echiichthys vipera*). This species has spines on its back which secrete venom into unsuspecting prey.

Wolffish

Wolffish (pictured) can support their entire body weight using their large teeth and strong



jaws. The wolffish also produces a natural antifreeze which allows them to survive in cold waters.

Common Starfish

Common starfish are a common bycatch of pot fishing and, like lobsters and crab, starfish can also regenerate limbs. And for that extra out of this world experience, starfish can eject one of its two stomachs out of its body to engulf and partially digest prey.

Atlantic Hagfish

The Atlantic hagfish is perhaps the strangest of them all. They have no jaws, bones and no vertebrae and can tie themselves in knots. A hagfish's body is covered in glands which produce a thick, sticky slime which they will use to escape its predators.

Velvet Crab

Velvet crabs are also known as the Devil crab or witch crab due to its red eyes and aggressive nature.

Environmental Officer
Northumberland IFCA

Rotary and local businesses support FC Amble Juniors



FC Amble Juniors is made up of five teams, each with its own Coach/Manager.

The teams are under 7s, 8s, 9s, 10s and 12s.

Each team received £150 from Amble and Warkworth

Rotary (see photo above left), which will go a long way to help this season, especially the 7s, 8s, 9s and 10s that are starting off.

Bleachy Clean sponsors the Under 7s. Robbs Auto Repairs sponsors the under 8s and the



under 10s Saturday team.

Mocha Mondo Coffee sponsors the U9s, while JT Planning sponsors the under 10s Sunday team. Spurreli Boutique Ice Cream are sponsors of the Under 12 team (above right).

Recent Amble RNLI shouts

The Amble All Weather Lifeboat Elizabeth and Leonard was launched to three incidents in recent weeks.

- A 10 metre potting boat was located near the North Steel Rocks at 12.10am on the morning of Sunday 11 August.

The boat was taken in tow and brought back to the harbour.

Coxswain David Bell said, "The boat is owned by a local lobster fisherman and its loss would have badly affected his work."

- Three RNLI lifeboats from Whitby, Tynemouth and Amble, and a Coastguard helicopter launched to investigate a major emergency on Thursday

evening 5 September. The vessel was a German yacht 130 miles east of Amble. The helicopter arrived on scene first, and it was determined that the "EPIRB" (emergency position indicating radio beacon) had been activated by accident and the yacht was not in distress. All lifeboats were stood down.

- Both Amble lifeboats were launched at 3.25pm Saturday 14 September. A stranded power boat was on rocks near Seaton point, taking in water through a damaged hull. The lifeboat's salvage pump was used to clear the water inside and it was towed to Amble harbour to be lifted into the boatyard.



Reports from our *County Councillors*



Funding projects from my small members scheme: The Northumberland Theatre Company has received a contribution to upgrade its current projector and screen. This new equipment will ensure Amble's cinematic delight

for years to come, to turn the centre into a memorable cinema experience. So grab the popcorn and pop into the Dovecote Centre and watch some great classic and memorable movies.

Also, contribution (SMS) of £11,500 funding towards resurfacing footpaths on Philip Drive green space area making these footpaths free from trip hazards and other defects making the area cleaner and safer for public use.

I have resolved a considerable number of local/personal issues from dangerous/damaged mobility ramps to having dropped kerbs installed outside the new Amble Inn, allowing better access for people with mobility scooters, wheelchairs and pushchairs. Also having residents' concerns addressed with regards to drainage problems after the summer downpour.

Three priorities on Local Transport Scheme 2019/20

1) Amble Percy Drive -

dropped kerbs and traffic calming measures.

2) Amble Harbour road - residents parking.

3) Radcliffe Village - Traffic calming measures.

My last residents' drop in this year - 30 November

Amble Library 10am - 11am

Broomhill Christ Church 11.30am - 12.30pm

Hauxley Parish Hall 1.30pm - 2.30pm

Terry.Clark@northumberland.gov.uk

The new supermarket is under construction on the Industrial Estate. The latest forecast of completion that I have is Summer next year. This is a 28,000-square foot outlet with other retail units located in the area and a petrol station. A drive through facility is also going to be constructed.

This important development should create employment and added convenience for residents and visitors to Amble.

I am requesting in next year's County Highways plan, for a marked bus stop area on Woodbine street to help prevent traffic hold up when buses stop in the road to pick up or drop off passengers.

Negotiations for the upgrading of schools in the catchment area continue and I am expecting to hear shortly as to their development plans.

Work has been carried out by Northumbria Water and the Council Highways department to alleviate the recurring problems at the bottom of The Wynd. I have been informed that this work will solve the issues that have been happening regularly. I sincerely hope so.

As you may know I have been involved with the Amble Youth Project for many years and am proud of the contribution it has made to the development of our young people. With the dark nights coming on perhaps parents might consider suggesting to their children that the AYP is a good place to go. It has trained staff, good facilities and is a "safe" environment for them to enjoy.

I am available on 07802385367. Please contact me with any queries for the West Ward of Amble.

Jeffrey.Watson@northumberland.gov.uk 0780 238 5367



Peter takes first prize

The Masons Arms leek show was held on 14 and 15 September 2019.

Results as follows:

1st Peter Griffiths 248.80 cu in

2nd Michael Brierley 237.12 cu in

3rd George Parker 233.48 cu in

Best leek in show: Peter Griffiths

Most improved grower: Raymond Lorrimer

3 onions fresh dug: Raymond Lorrimer

Blanch leek & dressed onion: Michael

Brierley

Many thanks to all sponsors

Denys Griffiths



Well done Noah

Well done to two year old Noah Edminson, who has been doing his bit for the community by picking up litter at the Welfare.

His Great-Aunt Denise

Bryson sent us this photo plus a video which you can see on our Facebook page. She said "Noah decided he'd pick up all the rubbish left at the Amble skate park by others before he played at the park. What a little star he really is."

Coquet Churches Together: friendly services at Hauxley Church

All are welcome to this year's Coquet Churches Together Ecumenical Remembrance Day Service at Sacred Heart Catholic Church at 11am on Sunday 10 November, straight after the short remembrance ceremony in Town Square.

In this edition we focus on our smallest member, Hauxley Church tucked in the corner of the picturesque village of Low Hauxley. The local war memorials can be found inside the church, (see pic) along with a Book of Remembrance which records many poignant family memories.

Originally created as a fishing village in 1852, Low Hauxley had a men only reading room by 1871, that was extended to a

Wesleyan Methodist Chapel by 1881. If any reader can help the congregation find the exact date when the chapel was opened, they'll be guest of honour at the consequent next church birthday party!

With most of the cottages in Low Hauxley now holiday homes, regular worshippers tend to come from High Hauxley and surrounding areas, with holidaymakers frequently joining them from cottages and the local caravan sites.

Unusually, services are held on Sunday afternoons at 4pm, led by a variety of preachers.

Amble's local minister, Rev. Lynda Coulthard, oversees us as we are a Methodist church, supported by Rev. John

McDermott from St Cuthbert's.

The friendly services are open to all, with enthusiastic, often unaccompanied singing followed by tea/coffee and marvellous home-made cakes!



The church is open as often as possible with hot water in a flask, teabags, coffee and milk for passers-by who might be cycling or walking the coastal path.

It is also opened up for annual events like Hauxley Fun Day and the carol service (4pm on 15 Dec this year), when a band of local musicians leads the singing, followed by mulled wine and mince pies in the village hall next door.

So if you're not a Sunday morning person, why not combine a stroll down the coast or around the nearby nature reserve with their afternoon service – you're sure of a warm welcome!

Tom Lloyd, Hauxley Church



Amble Town

COUNCIL

All meetings at 6pm unless stated otherwise

Town: 10th October, 14th November

Amenities: 28th November Remembrance Sunday: 10th November

EAST WARD:	Helen Lewis, Ian Parks, 33 Warkworth Avenue, Warkworth. NE65 0TP	Craig Weir (Chair/Mayor) 76 Priory Park, Amble NE65 0PH 07751 229 739 01665 712342	WEST WARD:	Jeff Watson Tracey Hinton, 13 George Street, Amble NE65 0RZ 07802 385367	David Bewley 11 Brinkburn Place Amble NE65 0BJ 07525713086	CEN. WARD:	Jane Dargue Kate Morrison, 3 Island View, Amble NE65 0SE 01665 711191	Clive Foxley 10 Sylvia's Close, Amble NE65 0GB 07795360513
-------------------	---	--	-------------------	--	---	-------------------	--	---

GOVERNANCE REVIEW

Amble Town Council have requested the Parish Boundary be changed to include Gloster Hill, Mariners Court, Mariners View, Rivergreen and part of Riverside Park as well as the rest of the Sewage Works and the field between it and Priory Park.

We have also asked to have two more Councillors in the East and West Wards due to the increase in properties in these wards and the potential for more. This consultation is currently underway until 18 October 2019.

We believe these areas should be within Amble Parish as many of the residents there have expressed that they feel more part of Amble than Warkworth. Most use the facilities which Amble has to offer- whether for shopping, health, business, leisure or voluntary purposes. We feel they should have a say in what happens in Amble and who they choose to represent them. For or Against - your view about these changes is important. Everyone, not only those affected, can comment on the changes.

Please respond to this consultation by contacting: Lesley Bennett, Senior Democratic Services Officer, Northumberland County Council, County Hall, Morpeth, Northumberland. NE61 2EF. E-mail: cgreviews@northumberland.gov.uk

MEMORIAL GARDENS

This area, originally gifted to the town, was the responsibility of the Urban Council. In 1974 when this was abolished under the Local Government Act, the responsibility became that of Alnwick District Council. Subsequently under the project to develop the Town Square and incorporate this area, the responsibility passed to Amble Development Trust (ADT).

We are delighted that following talks with ADT, Amble Town Council now have taken ownership and responsibility of the Memorial Gardens. We hope that by sharing the responsibility for these areas, the financial and physical cost of the maintenance and annual upkeep will be easier for both organisations.

Over time we hope to have the missing pieces of fencing along the back replaced and the whole fence painted, but we are planning for now to have the trees pollarded as they are too large for the area. To make the regular work more manageable, we are restoring some areas back to the original grass look but will still retain planted areas.

COUNCILLOR'S CORNER

A difficult question to answer- 'Why are you on the Council?' I enjoy meeting and interacting with people - it keeps my brain active. I care about where I live and I am trying to achieve some things which hopefully will make a difference to Amble.

'We want action from the Council' but which one- Town or County - as most can only be finalised by the County, even if begun by the Town.

The occasional thanks for those *Cllr. Craig Weir*

of us who are unpaid volunteers goes a long way to combat the many grumbles and complaints - although lots are only part of Social Media in which I do not participate.

If you really are interested in your town and what happens, don't join in the criticism, stand up and help in any way you can by joining the many great people in the various voluntary groups here.

They care, he cares, she cares, I care - DO YOU CARE?

CLOCK TOWER WAR MEMORIAL

Do not be alarmed when you pass here and see someone hanging down the sides of this. These are professional high rise workers who are engaged in fitting strips of short plastic 'spikes' to the apertures and some ledges to deter the pigeons from roosting here. It had been hoped that the sound of the clock striking again would have deterred them, but alas not. We are regularly finding lots of detritus on the stonework and steps; this will in time lead to severe damage to the tower and so a humane way to deter them is needed.

CO-OPTION OF COUNCILLOR

At the September meeting, members were faced with a hard choice to make with two very worthy applications to be considered. David Bewley, serving the West Council Ward, is now the latest addition to the Council. David has lived in Amble for over 30 years, and having retired from the prison service, is currently involving himself in voluntary work in the area. We welcome him and look forward to working with him to benefit the town and its people.

REMEMBRANCE SUNDAY 2019

Make a note in your diary for this year's wreath laying service held at 10.55am at the Town War Memorial which will be followed by a service at Sacred Heart Church in High Street.

WEST CEMETERY

Now that safety checks have been completed in section M, we are contacting owners of unstable memorials here to request they have work carried out to make them safe. In many cases people do not update their contact details and although the memorials remain their responsibility, they cannot be left upright if they are not stable. Therefore you will soon see these unstable memorials laid down onto the grave space. Please remember though that visitors to the cemetery do so at their own risk and should take particular care when in the vicinity of memorials.

Also during the recent very dry spell the ground in places has opened up and developed cracks - these are being filled as soon as they are noted but you still need to be very careful when walking over the grounds.

TOWN COUNCIL OFFICES, FOURWAYS 2, AMBLE. NE65 0DT Tel: 01665 714 695 www.amble.gov.uk

Email ask@amble.gov.uk Twitter: @AmbleTC Facebook: www.facebook.com/AmbleTownCouncil

Office hours: 10.30am-12noon & 1.30-3p.m. Monday to Friday Vicki Smith, Town Clerk Minutes available to view in Office or online

Poppy appeal and Remembrance Day

The Poppy Appeal is the Royal British Legion's biggest fundraising campaign held every year in November, the period of Remembrance. In Warkworth and Amble district the community supports the Appeal in many ways; donating money for poppies and badges in boxes displayed in local businesses, ordering wreaths, and turning out on Remembrance Sunday to the services held at Warkworth, Amble and Acklington and various parades in the district. We hope that 2019 will be our best Poppy Appeal ever to help those who need your help after serving their country, and for the families of those men and women who made the ultimate sacrifice to protect us from harm. Services will be held in Warkworth St Lawrence Church at 9 am, followed by wreath laying, and afterwards in Amble Town Square on Sunday, 10 November.

If you are interested in joining our branch - members meet quarterly at 7pm on Wednesday evening in the Legion Room, Warkworth War Memorial Hall, Castle Street, Warkworth please contact the Secretary at 07785 753100. At each meeting we have a visiting speaker and presentation on varied themes. Membership is £18 per year and includes a quarterly magazine and other benefits.

REMEMBRANCE DAY IN AMBLE

Sunday 10 November 10.55am Town Square.

Amble East End Juniors new sponsors



Amble East End Juniors are delighted to announce that Rothco Wills & Estate Planning are the club's new sponsor!

An annual deal has been struck with a four figure investment which is much needed to help with running costs! We can't thank Tom and Rothco enough in helping our club!

Head Coach Josh Rutherford stated 'It's an exciting time for the club with our four teams ready to start their season in the Pinpoint Recruitment Junior Football League, we are grateful for Akzo Nobel and Rothco Wills and Estate Planning for sponsoring the club, their support is second to none'.

Kickstart helps children get to grips with sport

Kickstart is a multi-skills sports club for children aged four and above, which has been running in Red Row for twelve years.

Club leader George 'John' Robertson passionately promotes the quality of PE, the teaching of

fundamental movement skills, the development of confidence and self-esteem.

John said "there is a distinct difference between PE and sport, and if PE is not taught correctly during the primary years it makes

sport difficult, and instead of encouraging children, many become discouraged."

The principle of practising fundamental running, throwing and jumping skills forms the basis of the club's activities. Rather than

focussing on competition and the rules of one specific sport, John and his team of volunteer helpers want to give the children ways to actively play.

You can find 'Red Row Kickstart' on Facebook.



Funeralcare

Our caring staff are here to listen and advise you, 24 hours a day, 7 days a week



Coquetdale Cottage, Queen Street, Amble
Tel: 01665 710437

Sullivan Associates

CHARTERED BUILDING SURVEYORS

Offering professional property advice throughout Northumberland

Building Surveys, Defects Inspections
Plans drawn for extension and new build
Planning Applications, Building Regulations Approval
Disabled Access Advice, Party Wall and Boundary Matters
Design and Project Management

Tel: 01665 513010

Email: info@sullivan-associates.co.uk

Fourways 2 6 Dilston Terrace Amble Northumberland NE65 0DT



TELEPHONE ORDERS WELCOME

01665 710 442

MONDAY TO SATURDAY: 11.30AM-9.00PM SUNDAYS: 11.30AM-2.30PM

***** NORTHUMBERLAND COUNTY COUNCIL

1 BROOMHILL STREET AMBLE NORTHUMBERLAND NE65 0AN

Christmas lights and procession

This year's Torchlight Procession and Christmas Lights switch-on takes place on Sunday 17 November. The procession will leave the Wellwood Pub at 5pm, moving down Queen Street and into the Town Square. This year the theme is Flights of Fancy – so if you would like to be part of the fun by making a fibre optic face mask, a lantern or a banner, or if you would like to take part in the procession please let the Events Committee know. Ring Julia Aston on 01665 712929 or email Julia@ambledevelopmenttrust.org.uk

Santa will hopefully be dropping in to meet youngsters at the Harbour Village from 4pm, and there will be stalls and children's entertainment in the Town Square throughout the afternoon.

As ever the Events Committee are looking for volunteers to help out, so if you can spare a few hours, please let them know.

Anna Williams, Amble Events Committee

WI meetings

Frances Anderson from Dry Water Arts Centre will be accepting a donation for their Dementia Café project at our October meeting.

14 October - RNLI with John Rowell Young.

11 November - Chocolate Making with June Carruthers

Rotary supporting others

Every year Rotary International stages Rotary Youth Leadership Awards (RYLA). These are leadership programmes co-ordinated by Rotary Clubs around the globe.

Rotary Amble and Warkworth sponsored three candidates from the



Billy Handyside, Rotary President John Geggie, Callum Wallace and Ross Paton

James Calvert Spence College this year: Billy Handyside, Ross Paton and Callum Wallace who all achieved the award. Callum Wallace was named "Most Inspirational Leader" of his year group, by the instructors on the course.

A cheque for £2,000 was presented to Hospice Care North Northumberland from the Amble and Warkworth Rotary Golf Day. Rotarian President John Geggie said "Amble and Warkworth Rotary has been a long-standing supporter of the hospice which does wonderful work for people in our area and a large part of Rotary aims is to support local community charities."

Mr. Geggie also praised the work of Mr Bell and Mr Wailes in organising the Golf Day competition, held at Foxton.

Come along and discover STEM

Children aged 9 to 13 can have a brilliant day at the Alnwick Adult Learning Centre finding out about science, technology, engineering and maths. A full day event on Wed 30 October includes three workshops run by industry experts in all things digital and STEM. Use engineering skills to build a stretcher and explore technology through practical work with robots.

The event runs from 9.45am - 3pm. Places are £7 per child, plus VAT and booking fee. Children must be supervised by a parent/guardian and each adult must book a free ticket. Lunch is provided. Book tickets on Eventbrite at <https://bit.ly/STEM30Oct>. The deadline for booking is 1pm on Mon 28 Oct. Any queries about the event email Nathan.Fuller@northumberland.gov.uk

Courses at Amble Pin Cushion

Knit and Natter (Drop in knitting group Fridays 20 Sept, 18 Oct, 15 Nov, 20 Dec) 10am – mid-day £ 4.50

Stitch and Bitch (Drop in sewing group) Mondays 16 Sept, 15 Oct, 18 Nov, 16 Dec 1.30pm – 3.30pm £ 4.50

Sat 26 Oct Rag Rug – leaf teapot stand 1.30pm – 3.30pm £20.00

Wed 30 Oct Fundraising Day for Hedgehogs 9.30am – 4pm

Sat 2 Nov Getting a Good Fit on a Bought Pattern 9.45am – 12.45pm £35.00

Sat 16 Nov Professional Sewing Tips 9.45am – 12.45pm £35.00

Sat 23 Nov Upcycled Mittens 9.45am – 12.45pm £35.00

To book, please pay deposit at least three days before the course date, in the shop or by BACs via www.amblepincushion.co.uk.

Music at Warkworth War Memorial Hall

Warkworth Memorial Hall has been spruced up with ceiling, lighting, insulation, a fresh lick of paint and new chairs. Projection and sound equipment have been updated. This has been a major investment with support from the National Lottery Community Fund, Warkworth Parish Council and the Butler Ember Charity. The hall is available for hire, details on www.wwmh.uk.

11 October – Northumbrian Ceilidh. Tickets £5 on the door. There's no bar at this event, so please bring your own refreshments.

22 October - John Faulkner and Sandra Kerr who co-wrote the songs and music for the TV series "Bagpuss" are touring again as a duo for the first time in 45 years, with a programme of traditional and self-penned material sung and played on many different instruments

25 October - Misspent Uke. Showcase music and songs from a range of genres. Band members lead and provide the 'musical backbone' of 'Ukes4Fun' ukulele sessions in Tyneside at The Cumberland Arms and The Millstone.

Tickets for 22 and 25 Oct. are £7.50 to be bought in advance. Available from the Warkworth Store or ordered from Peter Burnham. Tel: 01665 711388, Email: peter.burnham@gmail.com for collection/payment on the door. Full details at www.wwmh.uk.

What's on for the RNLI

In Morpeth on October 19, the Bewick Orchestra are holding their Autumn Concert, 7.30pm at St. James' church with proceeds to RNLI. Tickets £8 (£5 students) are available from Morpeth Tourist Information Centre or on the door.

Coffee Mornings in aid of the Amble Lifeboats at the Amble RNLI Lifeboat Station

Please come and join us for coffee and home baking on the follow dates between 10.00am and 1.00pm
Sundays 20 October, 17 November, 15 December

Amble Film Society

The next film to be shown for the Film Society is 'Stalker', from director Andrei Tarkovsky, on Wednesday Nov 6, 7pm-10pm at NTC Dovecote Centre.

For more information on the society and upcoming screenings, see their Facebook page: www.facebook.com/amblefilmsociety

Films and music at the Dovecote

12 October: Love Songs by BabyLove Productions 7.30pm

20 October: The Stars Look Down 7.30pm

26 October: Dora and the Lost City of Gold 3pm

26 October: Downton Abbey 6pm

31 October: film to be decided

2 November: John Miller and his Country Casuals 7.30pm

7 December: Alistair Anderson's Amazing One Man Ceilidh

Tickets: pre book on 01665 713655 or on the door

Amble Photographic Group (APG)

When/where do you meet?

Meetings are held at Trinity Methodist Church Hall, Percy Drive, Amble, NE65 0AG throughout the year (except August) on Fridays from 09.30 to 12.00.

What do you do in your club?

We aim to share the enjoyment of photography through talks from invited speakers, demonstrations, practical sessions, and field trips. We also hold monthly club competitions with feedback from expert judges.

Is there an age range?

No, but juniors must be accompanied by an adult.



Is there a charge?

In order to cover our expenses there is an annual fee of £25 plus a weekly sub of £1.50 for every session attended.

How long has the club been running?

The club was founded in 2006 by a group of digital

photography enthusiasts. They had all attended a course and wished to continue working together.

What sort of people might be interested in joining the club?

Anyone that enjoys photography.

Do people need specialist equipment/level of experience?

There are no special requirements.

What's the best thing about your club?

A very friendly atmosphere and a willingness to help each other in our learning about photography.

How do I contact you?

The club is run by a committee of 10 members.

Helen Holmes is the membership secretary on 07702 591839.

Do you have a club or group you'd like us to feature in The Ambler? email editor@theambler.co.uk and we'll send you a form

St. Mark's Coffee Mornings

Every 1st and 3rd Saturday from 10.00-11.30am in the hall.

Art exhibition

An art exhibition by Acklington Art Group will be held in Gallery 45 at Felton from 2 - 22 November, 10am - 5 pm.

Cromie Pharmacy

Get your vaccinations with us

Cromie Pharmacy now offers a full range of vaccinations, including:



- Seasonal flu
- Travel vaccines, including Yellow Fever
- Pneumonia
- HPV
- Chickenpox

Please ask for more information

Flu can be a serious illness ... are you at risk?

You need to get the flu jab every year. The flu jab is quick, safe and free* To book your jab, visit

Cromie Pharmacy.

This is an NHS funded service **NHS**



* Those not considered 'at risk' may incur a charge. Ask our pharmacist for details.

158 Percy St, Amble 01665 710 896

info@cromiepharmacy.co.uk

Floral Design

Amble

Floral arrangements for weddings and funerals, flower boxes and grave pots

Competitive prices

Flower workshops starting soon





Crowds flocked to the harbour on Sunday 25 August for Amble RNLI's annual harbour day. Spectators were treated to a demonstration of lifeboat rescues throughout the day, a chance to look onboard the all weather lifeboat, live music and entertainment and various stalls. Organiser Jill Faulconbridge said



"It was a lovely sunny day with plenty of visitors. The volunteers were all very tired but happy that the day went well. We hope to have raised approximately

£5000 and I understand that the souvenir shop took £2000 in sales."

Photos: Andrew Mounsey, Ivor Rackham and Judith Hardisty



Above: Four Amble RNLI crew members received long service awards. John Sim, John Connell and David Bell all received awards for 40 years of service alongside Paul Stewart who received an award for 20 years of service.