



# The Ambler

## Amble's Community Newspaper

Issue 121 Feb/Mar 2020

### Schools consider change to two-tier

One year after the announcement of millions of pounds of investment for James Calvert Spence College (JCSC), progress appears to rest on a decision on whether or not to adopt a two-tier system.

Executive Head of JCSC Neil Rodgers told The Ambler he had been meeting with heads of the first schools to discuss whether changing to a two-tier, or remaining as a three-tier system was best for the students in the future.

He said: "There have been discussions between ourselves and the first schools to see if we can come to a decision collectively as a partnership." However, he stressed, "The money is not dependent on one [decision] or the other."

"We need to agree on what is beneficial to us all for the future. We're still in discussions with all the other first schools in the partnership (Amble First,

Amble Links, Grange View, Red Row and Broomhill). We're also working closely with Warkworth who became a primary recently. The long term future of our students is the most important thing."

He added, "I am sure we will get an agreement very quickly."

We asked NCC about the £12 million promised to JCSC, and whether moving to a two-tier system was on the cards.

A spokesperson for Northumberland County Council said: "The council is committed to a significant investment into education in this area. We have had a number of meetings and are working closely with senior school leaders to determine the best options for the future. Once these are agreed we will be developing a business case to deliver this much needed investment.

"We would stress that the local authority has not suggested any change to school



Executive Head Neil Rodgers

organisation in the area."

Neil Rodgers said, "Both systems [two-tier and three-tier] have pros and cons, and we're dealing with lots of different issues. The headteachers in the partnership will make the decision. Once we've agreed on our educational vision, the planners and architects will work with us."

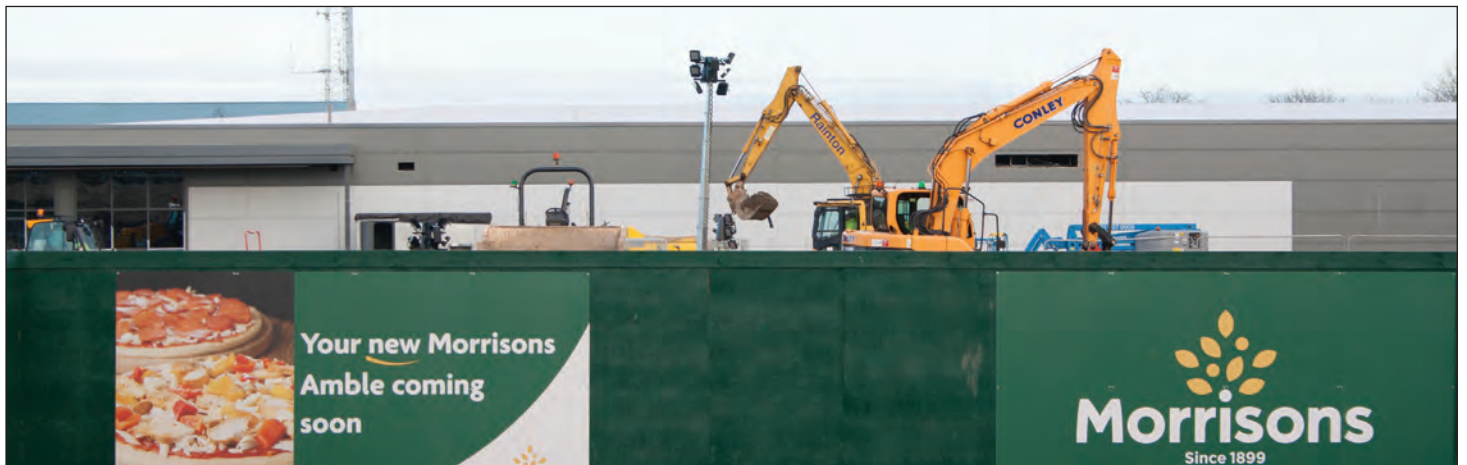
Last February, NCC announced a multi-million pound investment for JCSC. The money was to help improve the school building and provide

brand new facilities for both the students and the community.

Two months later, in April, Mr Rodgers told The Ambler how much had been set aside: "We met with people from the county council ... who told us that they had earmarked around £12 million, which is great news. It's an amount of money that will allow us to refurbish and extend the high school site and hopefully get both the high school and middle school onto one site."

*Anna Williams*

### Morrisons begins recruitment drive



Work is progressing on the new Morrison's store, which is due to open on 2 April. Recruitment has started and jobs are being advertised online: <https://apply.morrisons.jobs/> Or contact Sarah, Teresa or Kirsty on 07989224504 for more details. See also p5.



# MILLENNIUM WINDOWS



NORTH EAST LTD

*Fit for the Future*

Established 1996



*Specialists in UPVC Energy Efficient Windows & Doors  
All Work Guaranteed!*



***NO Hard Sell!***

***NO Up Front Payments!***

***Family Run Business!***

***FREE Quote in the Post!***

***Tel: 01665 713123 or 01670 791119***

***Guaranteed to beat any like for like genuine written quotation!  
Limited period only!***

# Norma the champion

Congratulations to Norma Hinson who has been recognised as an Outstanding Volunteer award winner by adult educational organisation, the WEA.

At a ceremony in London, Norma was presented with her award, and thanked for her 46 years as Amble branch secretary. Norma joined a WEA class after moving back to Amble in the late 1960s. She enrolled on countless courses and helped publicise classes, before becoming branch secretary in the early 1970s

The WEA praised Norma's commitment to the organisation: "She continuously promoted the

WEA, and this is evident in the many years the class has seen new students, new tutors and new members of staff.

Norma encouraged members of the community to attend local WEA classes by highlighting the importance of continuous adult education and the benefits this brings. She helped create an atmosphere in which friendships could flourish and continue outside the classroom.

Norma has dedicated time and enthusiasm and is very modest about her role. But without her as secretary, Amble branch and their classes would not have been sustainable in such a rural region of WEA."



Norma Hinson

Norma told The Ambler about her time with the WEA: "As a member of WEA, I've met some great people – students, tutors and organisers. I remember a young, handsome tutor, who came many years ago, to teach us how to lead a revolution. His name was Alan Milburn, who later became well known as a Labour MP.

Many tutors returned often and became our friends over time. However much time being secretary took, it really was worthwhile.

The courses were all enjoyable and educational, but also provided a sociable meeting place."

## Local authorities' green plans to reduce carbon footprints

Every council in the North East declared a climate emergency last year.

But has anything actually changed since then? There have been repeated calls from environmental campaigners for more urgent, radical action to address the crisis.

In the next five years, Northumberland County Council will be offering every household in the county a free sapling tree to help offset carbon emissions.

### Newcastle

It is planned to pedestrianise

### Gateshead

The council and the Woodland Trust will plant 100,000 trees across Gateshead.

The authority is applying for government funding to develop a heat pump to extract renewable heat from the River Tyne. There are plans to use water from underground mine workings in Gateshead town centre, Kibblesworth, and Birtley as potential sources of heat. Funding has been requested for a 2km extension to the council's low carbon heat network to four council-owned buildings, including the Gateshead International Stadium, as well as 350 new homes.

### Sunderland

The UK's first EV rapid charging station opened in Sunderland, with further plans approved for rapid charging units in Washington. Low-emission Sunderland Connect city centre shuttle bus service has been launched. The council has committed to stop using single-use plastics. An eco pool car scheme for council staff and EV infrastructure for its vehicle fleet is being planned.

### North Tyneside

A review of over 22,000 street lights is being conducted to assess the feasibility of saving energy by converting these to LED, as well as reviewing renewable electricity options within council buildings. A public consultation was

launched on a new taxi licensing policy, which includes the proposed introduction of emissions standards for taxis and private hire vehicles.

### South Tyneside

£3.5m has been secured to develop the Viking Energy Network in Jarrow, which will use a cutting-edge river source heat pump to heat 11 council buildings and provide electricity. It is expected to save around £350k to £400k on council fuel bills and remove 770 tonnes of CO2 emissions every year. A 900kW wind turbine is planned to generate electricity for the council's Middlefields site

### Durham

LED lights have been installed in council buildings, 60,000 street lights, and in the Gala Theatre's stage lighting system. Almost 300 individuals and organisations have now signed up to the council's Single-Use Plastics Pledge. A bid for £250,000 from Innovate UK has been successful. This will be used to launch the Scaling on Street Charging Infrastructure project which enables those who live in flats or terraces to access electric charging points. A £20,000 scheme is planned to install electric vehicle charging points in rural areas with limited off-street parking.

Daniel Holland  
Local Democracy Reporter Service



Image by Les Whalley from Pixabay

Each local authority was asked exactly what they were doing after promising to act and making pledges to drastically reduce their carbon footprints.

Here is a selection of some of the green projects put forward in the region's seven council areas so far.

### Northumberland

More than £10m of funding has been approved for renewable energy schemes, including £2.9m towards a solar car port at County Hall; £1.9m planned for a potential Hexham hydro-electric project and £4m for renewable heat schemes.

Blackett Street permanently; proposals have been submitted to government to create a Clean Air Zone, with tolls on high-polluting vehicles from 2021. A £20m district energy scheme has opened on the Newcastle Helix site – saving 30,000 tonnes of CO2 over 40 years. An £8m street light replacement programme is to be completed by summer 2021 to reduce energy use by 50-70%, saving £1.4m in energy costs. The number of electric vehicles in the council's fleet will be increased, with 32 awaiting delivery and a further 112 over the next five years





A memorial stone dedicated to Amble's Johnny Johnston was placed in the National Veterans' Walk in Sunderland at the beginning of December.

Johnny was honoured for his service in WW2 as a Paratrooper, who took part in the D-Day landings.

He died in a car crash on 4 October, with fellow WW2 veteran Pearl Smith who had served in the RAE. The two 96 year-olds were both killed in the crash.

A dedication service attended by family and friends was held, as stones to both veterans were placed in their honour.

The Veterans' Walk was established by the Brothers in Arms charity to honour all military personnel and those who have represented their country, including the Merchant Navy. [www.nationalveteranswalk.co.uk](http://www.nationalveteranswalk.co.uk)

## Dealing with hate crimes in Amble

Police in Amble have had to deal with hate crimes targeting a Syrian refugee family living in the town.

The alarming news was revealed by Neighbourhood Sergeant Steve Knight during a policing and community safety update to the North Northumberland Local Area Council on December 19.

He said that crime figures in the Amble and North Broomhill areas had been quite consistent year on year, but that there had been a rise in anti-social behaviour in Amble, with additional resources deployed and dispersal notices used.

Sgt Knight went on to say that his officers had been 'concentrating on racially-aggravated anti-social behaviour and hate crime directed at a Syrian refugee family'.

He did not wish to go into too much detail, but added that 'a huge amount of safeguarding work' had been put into this issue and it was still ongoing.

Back in May 2016, Northumberland County Council agreed to make an offer to the Home Office to accept up to 12 families per year fleeing

the ongoing civil war in the Middle Eastern country, where the death toll could now be as high as 570,000 people.

At the meeting where that decision was taken, the then ward member for Amble, Coun Robert Arkless, said: "I hope we can be better than what I perceive to be a minority. We are very fortunate to live in a country which is safe and secure."



Sgt Sharon Wilmore-Greaves

Elsewhere, Sgt Sharon Wilmore-Greaves reported that crime in the Alnwick area is

up by 2% (or 27 crimes) this year compared to last year, with violence against the person offences up by 12% this year and 28% this month.

Theft is also on the increase, but vehicle crime, anti-social behaviour, burglary, public-order offences and knife crime are all down.

She said that the main issues in Alnwick itself are low-level crime and anti-social behaviour, shop theft and drugs, while in the surrounding areas, it's poaching, other rural crime and speeding.

Further north, Sgt Shona Vickers said that her Berwick patch had also seen a rise in violence against the person, 'a lot of it linked to the night-time economy', while also reporting work to tackle a shoplifting issue at the Tweedbank Retail Park.

She agreed that speeding was a general issue across the rural areas, while highlighting anti-social behaviour by youngsters centred on the public toilets in Seahouses and Wooler bus station.

Ben O'Connell Local Democracy Reporter Service

## Harry McQuillen's

# Age of insecurity



When large numbers of people pour fat down the sink or toilet a fatball may well form in the sewers, causing a severe blockage. In earlier times fat was a precious commodity. In wartime and beyond we saved fat in basins and jugs producing the dripping that we used for cooking or for spreading on our bread – very thickly.

There wasn't so much obesity in those days, and the folk who carried extra weight were usually physically active. Could it just be that excess has entered the lives of many of us?

The Christmas season illustrates our modern problems in our getting and spending, and the debt which accompanies it. If we don't spurge the economy shrinks and the Great God of Growth occupies the thoughts of

governments of all persuasions. I'm prejudiced about this area of human activity. I earn, or rather I'm given by a generous government, more than I'm likely to spend. Am I all that unusual? I see many people who are less fortunate than I am.

All governments tax and spend, but there will always be arguments over who gets what and who pays. The compromises needed for the provision of public services and the financial support of individuals are a

hard nut to crack. Recent election results indicate problems and attempted solutions. I think it

was Disraeli who wrote about "Two Nations". He thought of rich and poor as separate groups. We now know, with the help of statisticians, that wealth distributes itself on a sliding scale, with no obvious cut-off points.

Record use of foodbanks shows that all is not well for many of our fellow citizens. Our record employment statistics include people on zero hour contracts and others who can't afford to work more than 16 hours a week because of their benefit status. The temptation to fiddle must be very great.

Apropos thoughts of fiddling, we now have faked video footage and even faked audio that can be shown through the media.

Instant communications can be very helpful, but

it can also lead to online bullying and unhappiness. Addiction and supply of drugs may have links to social media.

Most of us have much to be thankful for as we move into the new decade. A decent climate, a walkable town with view and beaches and a population of people of all ages who are willing to talk to one another. Lots of us receive friendship and help from others in Amble.

My Good Sense Drug is a work in progress. When added to the water supply everyone will become as sensible as we are!

I know that I have a lot to celebrate and I hope that you feel that way.

Here's to 2020 and beyond, and to the sunlit uplands we all crave.

Harry

## Community thanked for amazing donations

Amble Food Bank wishes to thank everyone for their amazing generous donations of food over the Christmas period.

We were overwhelmed by the response to our article in the Ambler before Christmas.

We wish to thank those who organised, provided food for, volunteered at and attended the Community Christmas Lunch at the Masons Arms in Amble.

We would especially wish to thank Amanda from the Masons Arms and Lorraine from Sweet and Flour for their tireless efforts to ensure the lunch was a success.

We also wish to thank Sea & Soil, Crispys Cakes & Cookies,

The Galley, Amble Butchers, Sour Dough Culture, Tesco, Cloudberries, Moira Angus and the volunteers at the Amble Food Bank for their help in ensuring the event was a success.

Thank you to the following for their donations to the Amble Food Bank: Boots; Cock and Bull; Amble Dental practice and Farm bakery shop. We hope that this trend continues into the New Year.

We are asking people of Amble to carry on dropping donations of food off at either Co-ops in Amble and at The

Galley on Queen Street. We thank you for your continued support and also thank you on behalf of the recipients.

We are planning another music event possibly towards the end of February 2020. Flyers will advertise the event nearer the time.

I would personally like to thank my fellow volunteers at the Amble Food Bank for their continuous hard work.

*Bill Cruickshank*  
Coordinator Amble Food Bank  
[amblefoodbank@aol.com](mailto:amblefoodbank@aol.com)

**Food bank drop-off points:**  
Both Amble Co-ops  
The Galley on Queen St

## Harbour Lights Church supporting Amble Food Bank



Amble Food Bank receiving the donation from Pastors Neil & Joan Sayers and some of the congregation

“Helping bring Christmas cheer”. Festive treats as well as basic food essentials were collected by the congregation of Harbour Lights Church during their Advent Appeal.

Receiving their donations Terry Long of the Amble Food Bank stated, “We are overwhelmed by the generosity

of the church, this will bring much needed help and some Christmas joy.”

Harbour Lights Church Pastor, Neil Sayers added, “It is our joy to support the valiant work of the food bank; part of our mission is to be actively working with community organisations to bring help and

hope.”

The Amble Food Bank is facing increasing demand so always welcomes offers of assistance. Contact Terry and Marion Long on 07824 660447.

For details on the work and vision of Harbour Lights Church visit: [www.harbourlightschurch.com](http://www.harbourlightschurch.com)

## Morrisons new neighbourhood store



Over 100 jobs have been created in the new Morrison's store in Amble. Designated a Neighbourhood Store, it's only the second of its kind in the country, and manager Kevin Smith is excited to get going.

“We'll be selling the right kind of produce for the local area,” he said. “We're wanting to build a strong relationship with the community, we want people to come in and feel welcome, and get great service from a friendly colleague.”

There will be a community champion in store too, who will help organise school tours, and help local businesses with prizes for raffles and tombolas and bag packing opportunities. There will also be a community room, free to use for local groups.

The store will be around the same size as the one in Alnwick, and will feature a Barista coffee bar, butcher, bakery, salad bar, a 'free-from' section, and a range of children's clothes.

The store will be open 7am-10pm Mon – Sat, 10am-4pm on Sundays, and the petrol station shop will be open from 6am-11pm everyday.

For more information on the job vacancies, see <https://apply.morrisons.jobs/>

## Friendship dogs scheme

Wag & Company is a North East - based friendship dogs project, where you can volunteer with your dog. Be part of something amazing! Wag & Company is building a movement of North East dog lovers working together to help older people in our community.

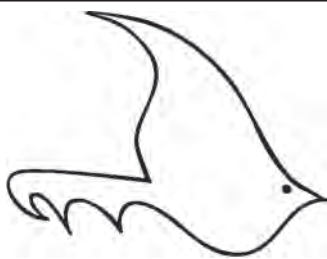
We want everyone who misses the friendship of a dog to quickly benefit from a visiting dog team. Can you spare a couple of hours most weeks to make a big difference to someone's life? We'll make it easy for you and your dog to safely volunteer.

Visit our website to find out more and get involved. [www.wagandcompany.co.uk](http://www.wagandcompany.co.uk) We're also on Facebook

St. Cuthbert's Parish Church of Amble is applying for the granting of a Premises Licence under Section 17 of the 2003 Licensing Act for the Parish Hall, Dovecote Street, Amble, Northumberland NE65 0DX. If granted, it will enable the supply of alcohol on the premises. License activities 7days/week 08.00 to 23.00.

Any objections to this application to be sent to Northumberland County Council, Licensing Department, Stakeford Depot, Stakeford, NE62 5TR tel. 01670 623856 or email : [licensing@northumberland.gov.uk](mailto:licensing@northumberland.gov.uk) no later than the 6th March 2020.





## The Ambler

Fourways 2  
6 Dilston Terrace  
Northumberland NE65 0DT  
Tel: 01665 712929  
www.theambler.co.uk  
editor@theambler.co.uk  
Twitter: AmbleByTheSea  
YouTube: AnnaAtTheAmbler1



### Editorial Team:

Louise Brook - Vivienne Dalglish  
Cath Findlay - Chris Herzberg  
Norma Hinson  
Andrew Mounsey - Bartle Rippon

Editor: Anna Williams

### Thanks to:

Mark Beswick & The Artogracchi Crew  
Judith Hardisty

### Distribution:

Charlotte, Sadie, Rachel,  
Bryan and Lorraine

### Printing:

Azure Printers, Pegswood

Would you like to join  
The Ambler team? We are a friendly  
group who welcome contributions  
and help from anyone who would  
like to volunteer.

Thanks to all our contributors,  
sponsors and advertisers:

Co-op Local Community Fund

Rotary Club of  
Amble and Warkworth  
Inner Wheel Club of  
Amble and Warkworth



The Ambler is a proud member of  
the Independent Community News  
Network



The Ambler is a project of  
Amble Development Trust

The Ambler is printed six times per  
year. The views expressed in The  
Ambler and The Ambler Online are  
not necessarily those of  
the Editorial Team

Printed on paper from sustainable  
forestry in the UK

# Jobs boost for the Friendliest Port

One hundred new jobs in Amble is a wonderful start to the year, and as the new Morrisons store nears completion, it provides a great opportunity for local people (See p1 and p5).

Vacancies are being advertised for a wide variety of positions - look on their website: <https://apply.morrisons.jobs/> to see what's currently on offer.

The Ambler understands that building on the other retail units and the drive thru will happen after Morrisons and their petrol station opens.

Sadly we've seen the closure of businesses on Queen Street. Let's hope they are taken over by new ventures soon. (p6, p13)

Other changes are being mooted too; will we go two-tier or remain with our First, Middle and High school education system? (p1). Will the new housing on the entrances to town have the impact on our infrastructure that many people fear (p20)? Or will they be built and inhabited so gradually that the effects will just be slowly absorbed?

The environment is of course uppermost in many people's

minds, and climate change is now bringing about behaviour change. See what our councils have planned (p3) - and what you can, and are doing (p8, Artogracchi, p12, p15).

Well done to local heroes - Norma Hinson (p3) those supporting the Amble Food bank (p5) and those working to help others (p8).

And let's stamp out the unwanted behaviour from a few miscreants, detailed on p4. We're a strong, big-hearted community and rightly proud to be known as the Friendliest Port. How to report anti social behaviour is on p7.

## WHAT YOU SAY...

### Thank you good Samaritans

On the afternoon of 11 December near Amble Marina, my wife, who is over 80, tripped on a kerbstone and fell heavily. After some time she was taken to a hospital south of Blyth.

While on the ground, and in great pain, she was helped by several passers-by. One covered her with a reflective plastic sheet, another brought a car blanket, while another who was a First Aider, called 999 and described to them my wife's medical state.

We cannot overstate our gratitude and admiration for the kindness of these Good Samaritans who contributed so much to my wife's recovery. I hope they will read this tribute and feel a well justified surge of pride.

Ray Wenshaw

Harpden AL5 2FH [raywenshaw@yahoo.co.uk](mailto:raywenshaw@yahoo.co.uk)

### Thanks for your support

Ann and Richard would like to thank the community of Amble and surrounding district for the cards, gifts, flowers, good wishes and kind remarks on our recent retirement from 42 Queen Street.

We could not have had the business we had, if it had not been for the customers that have supported us over the years, for which we sincerely thank you all.

We now look forward to being on the other side of the fence, supporting local business and being involved in community life.

Thank you again

Ann Burke & Richard Wardman  
Amble

## What to do if you find a seal on the beach



We were on the beach near Amble Links and a lady walking her dogs told us there was a seal pup in the dunes. I called the coastguard and they stated it was normal behaviour to leave the pup on the beach so she could hunt, then return to it later. I will check tomorrow morning to see if that is the case. I took this shot at the same time.

Michael Surphlis, via email  
(Update: next day the seal pup had gone)

We welcome your letters, email, Facebook and Twitter comments for publication. Your name and address must be supplied, but will be withheld on request. Letters/Facebook comments may be edited.

## Stranded Animals along our coasts...

If you come across a stranded seal or dolphin, you can help by knowing WHAT TO DO AND WHO TO CALL

### SEALS

Seals are a common sight on our coast. They are often seen resting on the shore or in the water. They are often seen resting on the shore or in the water.

- Telephone for help
- Keep people and their dogs away until help arrives
- Don't get too close to the seal or pup - they can bite

**DOLPHINS AND PORPOISES**  
Dolphins and porpoises are often seen resting on the shore or in the water. They are often seen resting on the shore or in the water.

**SEND FOR HELP DO NOT PUT YOURSELF AT RISK**

- Telephone for help immediately - even if you are not sure if the animal is injured
- Calmly approach the animal, but be careful, these animals can make sudden movements
- If you can find adequate assistance, gently lift the animal over onto its back and keep its airway clear by drawing with your mouth. Do not pull on its fin or tail and be very careful not to get water down the blowhole, which is on the top of its head
- Keep dogs and crowds away
- Reduce noise or sudden movements to a minimum to avoid further stress to the animal
- Do not attempt to drag the animal
- Record the date and time - you could get injured

**British Divers Marine Life Rescue**  
01825 765546 or 07787 433412  
(weekdays 9am-5pm) (outside office hours)  
**Scottish SPCA**  
03000 999 999  
Dead whales, dolphins, porpoises or seals should be reported to the Scottish Marine Animal Stranding Hotline on 01463 243230 or 07979 245892  
For more information, please visit [www.bdmrl.org.uk](http://www.bdmrl.org.uk)

This info from the British Divers Marine Life Rescue asks the public to keep away from stranded seals, and gives a contact number if they are injured. 01825 765546 (or 07787 433412 out of hours). See [www.bdmrl.org.uk](http://www.bdmrl.org.uk)

## Working to make Amble a safe place

Northumbria Police and Northumberland County Council are working together locally to tackle anti social behaviour, crime and disorder in order to make Amble a safe and pleasant place to live and work.

We have responded to a number of community concerns, which has resulted in Orders being issued to a number of individuals, closer local working partnerships and the demolition of a set of garages, which were a local ASB hot spot.

We are aware that some concerns remain and we would like to continue working with the community to tackle these.

We are always grateful for

the information we receive from members of the community and would like to encourage anyone who has concerns or information to get in touch with us.

To this end we are increasing the ways in which you can do this. This includes direct letter drops to premises, comment forms being available in a number of shops and community facilities, and direct reporting via the NCC and Police online reporting forms.

This is not designed to replace the usual reporting methods but to pass on information easily, concerning community issues.

Should you wish to make

contact in the mean time, you can do so via the methods below:

### Northumbria police

- Call 101 and ask to speak to a member of Amble community policing team

- Fill in the online form: <https://beta.northumbria.police.uk/our-services/report-an-incident/report-an-incident/>

### Northumberland County Council

- Call 0345 600 6400 - and ask for Public Protection

- Fill in the online form here: <https://online.northumberland.gov.uk/citizenportal/form.aspx?form=990061>

- E mail [public.protection@northumberland.gov.uk](mailto:public.protection@northumberland.gov.uk)

## The Puffin Festival wants you!



As call has gone out to any local business, groups or individuals who would like to be involved in the Puffin Festival, to get in touch with organisers.

Whether you would like a stall, or provide some entertainment, perhaps offer your help, or suggest an activity, now is the time to let us know.

This year, the festival takes place on Saturday 23 and Sunday 24 May (bank holiday weekend).

For more information, contact Julia at Amble Development Trust: [julia@ambledevelopmenttrust.org.uk](mailto:julia@ambledevelopmenttrust.org.uk) 01665 712929, or visit [www.amblepuffinfest.co.uk](http://www.amblepuffinfest.co.uk) where you can download a stall booking form.

## JCSC making plans for the future



Members of North East Learning Partnership, Ford NGL, JCSC staff and our new Enterprise Adviser, Kate Dawson (centre).

James Calvert Spence College welcomed parents, community group representatives and local business owners at its South Avenue site in January, for a day of master planning.

Attendees discussed the desired skills, attributes, and competencies of James Calvert Spence College leavers that will best prepare students for the next stage in their lives, whatever their goals may be. They also worked in groups to plan action

points around the three core focus areas of learning, reading and literacy and local community.

The day gave the opportunity for parents, businesses and the wider community to provide feedback and expertise that will help direct the steps James Calvert Spence College and its students will take in the future.

Kate Dawson, Founder and Director of the All-in-One-Company and newly-appointed Enterprise Adviser at JCSC,

said: "This is a very exciting project where we are linking to the community and to local businesses to give our students hands-on project led learning opportunities. Out of 30 educational establishments who applied for this we were one of the lucky four who are on this journey."

The next event for the project will take place on March 27 with parents and local community and business representatives invited to attend.

For further information, please contact JCSC's industry alignment partner, Rachael Church via email at [rachael.church@nelep.co.uk](mailto:rachael.church@nelep.co.uk).



**NORTHUMBERLAND**

Northumberland County Council

**Councillor Terry Clark**

*will be holding surgeries on*

Saturdays: 7 March, 4 July and 7 November 2020

10am-11am in Amble Library

11.30am-12.30pm at Christ Church Hall Broomhill

1.30pm-2.30pm at Hauxley Village Hall

**All Constituents Welcome**

**Expertise Wills and Wealth**

**DO YOU WANT TO PROTECT YOUR FAMILY'S ASSETS?**  
Protect from 3rd Party Challenges & Divorce and Business Failure, Sideways Disinheritance

**Free Advice on Tax Planning on Care Costs**

**Lasting Powers of Attorney (changed 2007)**  
Make sure you have them in place whilst you're fit and healthy

**NEED HELP WITH PROBATE? Fixed Fee from £1000**

**Write A Will from £99 or Free Will Reviews**

**Ring Enid: 07772 182 130 • 01670 855 768**  
**for a FREE CONSULTATION in your home**

Expertise Wills and Wealth

Email: [enid.eww@sky.com](mailto:enid.eww@sky.com)  
Barrister Intermediary and  
Member of the Legal Services Guild

Legal Services Guild



## Coast Care looking for volunteers

Coast Care volunteers have been working hard across all weathers on practical conservation efforts across Bamburgh Castle, Embleton Quarry Nature Reserve, Beadnell Bay and Waren Caravan Park to complete tasks before bird nesting season begins.

Coast Care are holding group activities at Bamburgh Castle to continue removing the ivy every Thursday in February 10am-2pm (except half term week).

Not only is volunteering with Coast Care a fantastic way to give something back to your local environment it is also a great way to improve your health and wellbeing.

See [www.coast-care.co.uk](http://www.coast-care.co.uk) or contact the team on [info@coast-care.co.uk](mailto:info@coast-care.co.uk) / 07813 563047 to find out more and to book your attendance. Or come along to our next coffee morning in Seahouses on Friday 28 February to meet the team.

## Stuckfish launch new album

Local Prog Rock band Stuckfish has a highly acclaimed new album out called The Watcher, and the band is playing Alnwick Playhouse on March 6.

Lead singer Phil Stuckey said "Initial sales sold out in two months and we're having to do a second 'pressing'. Famous Dutch musician, Thijs Van Leer, from the band Focus, played flute on our album which was amazing!" See more: [www.stuckfish.net](http://www.stuckfish.net)

## THE MAD JAM WOMAN & Pride of Northumbria



**Award winning Preserves & Relishes**

Fourways One  
Bridge St, Amble NE65 0DR  
07766 857680

Also available at the Seafood Centre  
[www.madjamwoman.com](http://www.madjamwoman.com)

## Catch My Drift project pleased with success

Northumberland Wildlife Trust's Catch My Drift project at East Chevington is working to improve the land and habitat for people and wildlife at the wildlife charity's East Chevington nature reserve.

Supported by players of the National Lottery via a grant from The National Lottery Heritage Fund, it's 'Catch my Drift' title is a nod to the reserve's history as the former East Chevington Drift Mine (1882 -1962), and the East Chevington Opencast Coal Site (1982 - 1994).

In less than one year, Catch My Drift volunteers and project assistant Sophie

Webster attended talks and events with local WPs and bird clubs, held coffee mornings for the local community and guided walks around the reserve. The volunteers took part in 62 survey events on the 185-hectare reserve, recording 387 species and 276 new species. These included common lizards, black elfin and saddle mushrooms, chicory, pepper saxifrage, hedgehogs and pale pinion moths.

Perhaps the greatest excitement was caused by the discovery of a harvest mouse nest, proof that they are still around, 16 years after 205 were introduced onto the reserve.



Sophie Webster

## Coquet Cottages wins prestigious travel award

Coquet Cottages, a family-run letting agency based in Northumberland, was announced as the Bronze winner of The Best UK Cottage Holiday Company in the 2019 British Travel Awards. The announcement was made at a glamorous Gala Awards ceremony in London

attended by nearly a thousand representatives of the travel industry.

British Travel Awards' chief executive Lorraine Barnes Burton said: "Coquet Cottages is to be congratulated on winning bronze in The Best UK Cottage Holiday Company.

Competition was particularly strong but ultimately it is the travelling public who decide the winners by voting for the travel companies they consider the best in the business. The British Travel Awards are the largest awards programme in the UK and to win is truly an accolade."

## Border Links group happy in their new home



Border Links' Amble group

Border Links, a charity which supports people with learning disabilities, have moved into brand new premises at Fourways 2 in Amble.

After 12 years in the same venue, it was time for a change and they are all enjoying having a warm, comfortable place to meet and work.

The Amble group put together and deliver veggie baskets, but they also undertake many other tasks.

The groups are all busy planning their work schedule for

the next few months. They enjoy many different activities.

The Admin Group are responsible for all the paperwork and general admin for the veggie baskets.

The Personal Interest group enjoy personal and independent skills development through craft activities, cooking, planning events and exploring their own interests.

The Social Enterprise group plan, organise, compile and deliver the fruit and vegetable baskets to local customers.

All in all everyone is kept very busy and they have now started up a monthly Drop-in. So come along to find out more and join them at 1:15 on Tuesday 18 February for an activity afternoon.

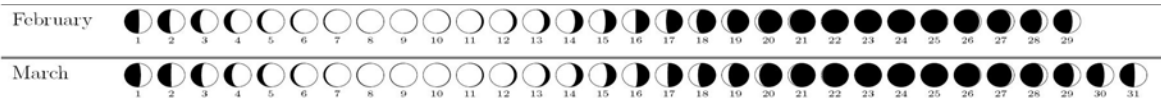
Border Links also has groups in Berwick, Cornhill, Duns and Kelso.

For further information please contact 01289 305423 or 07900 252894 or check out the website [www.borderlinks.co.uk](http://www.borderlinks.co.uk)

You can also follow them on Facebook and Instagram



# Looking at the night sky - February and March



"The old moon in the new moon's arms". Photo Adrian Jannetta

## The Moon

The full moon on March 9 is informally known as a Supermoon. That's the name given to a full moon occurring when the moon is at its closest point to Earth in its orbit. It will look a little larger and brighter than a 'normal' full moon. The full moon on February 10 is almost a supermoon too.

This is the best time of year to look for earthshine on the crescent moon. The night-side of the moon is faintly illuminated by light reflected from Earth when it is a crescent. The best evenings to look are February 26 - 28 and March 27 - 29. In this part of the world people often call it "the old moon in the new moon's arms".

## Bright planets

As soon as the sun goes down you can't miss the planet Venus shining in the western sky. It is brighter than any star in the sky and it sets more than four

hours after sunset. During February, you might also spot the innermost planet, Mercury, in the same part of the sky. It doesn't shine as brightly, but you can catch it from about 45 minutes after sunset - to the right and below Venus (and closer to the horizon). Early risers can see three more planets in the dawn sky: look southeast to spot the brightest - Jupiter - low over the southeast horizon. Orange-red Mars and cream-coloured Saturn are also nearby. All three planets will become easier to spot in the months ahead.

## Equinox and the Aurora

These are lean years for UK aurora chasers! The frequency with which they appear is correlated with solar activity and we are currently experiencing a deep solar minimum with few sunspots and very few solar storms leading to strong aurora. However, during

the equinox, the magnetic field of our planet is tilted at a more favourable angle to the Sun making the appearance of the aurora a bit more likely! It's always worth checking the northern sky in the weeks either side of the spring equinox on March 20. Visit the website [spaceweather.com](http://spaceweather.com) or download one of the many apps for your phone to stay up to date!

## Betelgeuse

By late winter and early spring, the stars of Orion have moved into the western sky - look for a prominent line of three stars (known as the Belt). The bright, orange-red star above the Belt is called Betelgeuse (usually pronounced Beetlejuice. Try not to say it three times.) Betelgeuse has been making the news in recent months! It is a celestial heavyweight of a star known as a red supergiant.

These kinds of stars are near the end of their brief lives and destined to go out with a bang. A

violent supernova explosion will destroy Betelgeuse when nuclear reactions in its core eventually stop. This is likely to happen at some point in the next 100,000 years. However, there is a big margin of error since a lot of measurements of Betelgeuse (its exact mass, age and distance) are very uncertain.

Betelgeuse began to fade last year and is now as dim as it has ever been in recent history. This has fuelled speculation on social media that the star might be about to go supernova - exploding to become as bright as the full moon in our night sky. The reality is that brightness variations like we're seeing are expected with stars like Betelgeuse and are not an indicator of an imminent explosion.

Dr Adrian Jannetta FRAS  
Vice Chair of Northumberland  
Astronomical Society (NASTRO),  
[www.nastro.org.uk](http://www.nastro.org.uk)  
Twitter: @AdrianJannetta

**STANTON**  
Coast & Country Garden Service

01665 798543

AMBLE

Visit us on Facebook

Make it look pretty again!

**Maintenance and Design**

- weeding
- grass cutting, edging
- planting, flower potting
- hedge trimming
- pruning
- landscaping
- paving, fencing

## AMBLE HEALTH & LEISURE CLUB

AT AMBLE LINKS COASTAL HOLIDAY PARK

**GYM MEMBERSHIP FROM £24 PER MONTH\***

Services and facilities available:

- Gym with state-of-the-art Technogym equipment
- Access to the Technogym wellness cloud
- Progress monitoring with the Tanita system
- Personal training (limited availability)
- Fitness classes
- 20m indoor heated swimming pool
- 5m learner pool
- Sauna and steam room
- Coffee bar

**FULL PACKAGES**  
from  
**£33 PER MONTH**  
or  
**£330 ANNUALLY**

**SWIM ONLY PACKAGES**  
from  
**£20 PER MONTH**  
or  
**£199 ANNUALLY**

\*Terms & conditions apply: Gym membership from £24 per month refers to the off-peak gym only membership. Off peak is available daily between 9am and 4pm.

For more information please contact  
**01665 710 727**  
or email [AmbleLeisure@parkleisure.co.uk](mailto:AmbleLeisure@parkleisure.co.uk)

Amble Health and Leisure Club, Links Road, Amble, Northumberland, NE65 0SD



## Beating The Devils



As everyone knows Newcastle have been in the premier league for at least two seasons and they have sadly lost Ayoze Perez who has been with them for a long time. But we got Joe Linton, he isn't as good as Perez. We are doing really well this season. We have beaten Tottenham and Manchester United (the Red Devils). Fingers crossed we can come in the top ten in the premier league.  
By Ethan



## Valentine's day for future



One year ago at Artograffi, we voted Greta Thunberg as the most inspirational woman. Back then she was only just beginning to become known for the climate change activism she was doing, but now most people know her name, and the cause she's fighting for.

Greta started the movement of school strikes for climate change where pupils don't go to school to advocate for climate change action. Some people disagree with her

school strikes, saying that she's too young to be an activist and she should go back to school.

However, Greta argues that if politicians aren't listening to the facts given to them by the most educated scientists, why should teenagers get an education?

The climate crisis is a huge issue that will have catastrophic events in the future if we don't act soon.

There's another school strike taking place on Friday 14 February at both Newcastle and Alnwick, and I think the more people who attend the better. It's a vital step towards saving our planet!  
By Lily



## Be mine Valentine



Valentine's day is drawing near, so go to the shop and buy flowers, chocolate, WHATEVER!

Here are some facts about Valentine's day, that Google told us:

- Every year, more than 36 million heart shaped boxes of chocolates are sold across the country. That's a lot of chocolates!
- Sorry men, it looks like you'll be spending twice as much as women this year on gifts. The average man spends £130 on Valentine's Day, while women spend about £70. (Seriously?- Ed)

• Don't forget about your pets! Every year, around 9 million people buy their pets a Valentine's Day gift. Looks like my dog will get some dog-friendly chocolate this year!



Now time for not-Google facts:

- Kim from Sweets and Treats on Queen Street told us that the most popular chocolates they sell for Valentine Day are Ferrero Rocher, because they come in a heart-shaped box!
- Love heart sweets are also popular, of course.

• They also sell a lot of fabric roses, heart-shaped photo-frames and heart-shaped cushions!  
By William and Grace

## Veggie vs. Meaty



Today on Interesting Discussions With Lily and Ava, it's the age old battle between meat-eaters and vegetarians. Who is right? Is eating meat really heartless murder, or is being vegetarian actually worse for the environment?

A: I am the resident vegetarian and I believe that people should eat less meat. I'm not going to force anyone to stop eating meat, or force my opinion on anyone but it is obvious that eating meat kills animals. For this reason, I am against eating meat.

L: I agree that the amount of

animals we're killing for meat is bad, but all omnivores eat animals. It's how we get the cool nutrients and all that stuff we need to do the whole life thing.

A: There are so many other ways to get the right nutrients the body needs, I don't eat meat but I'm perfectly healthy. And anyway, eating meat has been

proven to be bad for the environment because the methane cows produce is bad for the ozone layer.

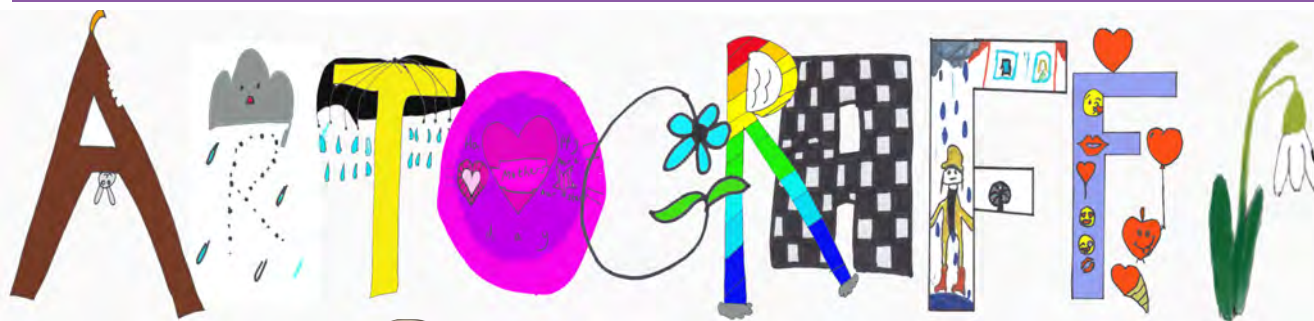
L: That may be true, but have you considered the greenhouse gas emissions from transporting the vegetables.

Some scientists say they actually have a greater carbon footprint than meat, which is pretty gosh darn bad. So is there any good option?

A: That might be true, sometimes sustainable farming is better than veganism/vegetarianism. However, I think people should be allowed to eat what they want according to their beliefs.

And that's all folks, thanks for reading. Is there any good option in the world of food? Who knows! Let's just eat what we believe is right (except cannibalism, that's illegal (probably)).

By Ava and Lily



## Dogs in love



On a sunny day in the spring, Bo was running along the beach with her owner Megan (exhaustedly) running behind.

Suddenly, Bo ran into Neville, a Sprocker Spaniel belonging to her best friend Hannah and her brother William. It was love at first sight. The dogs eyes met and they sat on a mat to have a picnic.

After a while, along came Ozzy with Bethany. Ozzy got jealous and started to fight Neville because he also loved Bo, but Neville didn't give up; he kept fighting. Bo stopped the fight before it got worse.

Then, along came a dog called Shady with her owner Grace. Ozzy fell in love with Shady, leaving Neville and Bo to have a nice Valentine's Day together.  
By Megan



## A day in the life of an Ofsted inspection



Ofsted - possibly the worst possible thing imaginable for your average high school teacher. What's worse than teaching? Teaching with a scary-looking inspector in the corner of the classroom. Did any of them get any sleep over the weekend? Probably not. Things are looking like they're going to be good.

**Lesson 1:** The behaviour management teacher pokes his head into our classroom. He looks like he hasn't slept for a week. A few friends get taken out of the lesson and we wonder if we'll ever see them again, but they return shortly after.

**Lesson 2:** Our English teacher says she's not worried about Ofsted. I can see the true panic

in her eyes as she reads over the lesson plan again and reminds us of our target grades.

**Break:** The corridors are a disaster zone. One of our teachers is trying to organise us on our way to the canteen. He is not succeeding.

**Lesson 3:** The smile on our maths teacher's face is far too wide. Half of the class make a plot to be on their worst behaviour if Ofsted comes in and she looks like she might cry.

**Lunch:** Our science teacher is in his best suit, which is odd as I didn't realise he owned a nice suit. He looks distressed. Everybody does.

**Lesson 4:** The people who had been talking to the inspector

return, lunchless and sad. He'd asked them if they would recommend the school but none of them would admit to the teachers what they'd answered. The teachers are beginning to lose hope.

**Lesson 5:** Everyone knows they're on the homestretch. Each time the door creaks our teacher's head flicks around to the door like an owl. Her eyes are

wide. If we said boo I think she might have a heart attack.

Then we're free. The teachers cry with relief and the students continue their plan to create elaborate booby traps for the next time. We can't wait for Ofsted to visit again. Thanks Ofsted!

By Lily



## Lamb facts that wool shock ewe



Spring is a season of... spring! And the sun may actually be starting to show - if England even has a sun. Anyway, this is my Spring Report thing. About little lambs.

Lambs are baby sheep that appear around February/March. They are woolly and cute (in my opinion), and they eat grass. Here are some fun facts about lambs:

- Lamb (as in the meat) isn't actually lamb! It's just mutton called lamb - do you think you'd get much meat from a baby sheep?
- A female sheep is called a ewe - ew! A male sheep is a ram. So why do we call them sheep, instead of ewes and rams? Because it's easier to remember, probably!
- A group of sheep is a flock - like a flock of birds (birds also have pods and flights).
- Sheep (or should I say rams, ewes and lambs) travel in flocks. For it to be called a flock, there has to be at least 20+ sheep.
- When ewes and rams mate (sheep and another sheep love) the lambs are born around 5 months afterwards.

By Grace



## Mothers day is on March 22

Ok if you're a mum stop reading ... I MEAN IT!



Ok not mothers, I have a few ideas which you could get your mother. Here are a few tips...  
1) Be creative you don't have to get them flowers or chocolate or whatnot.

Maybe go down to the beach find as nice rock and paint it.

2) Make her breakfast in bed, little heart shaped toasts, a strawberry heart in yoghurt, and so on, it would be lovely.

3) Take her out to a restaurant at six o'clock exactly, that's the best time to go (not a fact I just like the time six o'clock )

Thank you for reading

By Hannah

## Spring poem



Spring has arrived; it's been such a long time,  
Now go outside, hear the bluebells chime.  
Dogs play with the flowers in the sun,

Look at the beach, the sea so cool,  
You'd wish you have a swimming pool.  
Walking dogs on the grass,  
Cold weather? No I'll pass.

Bluebells here! Bluebells there,  
Bluebells grooving EVERYWHERE!  
See the bees, how they buzz,  
And can you see their body fuzz?

Butterflies flutter,  
Bread with butter,  
Nothing can beat that good old feeling of spring,  
Who would prefer a polished diamond ring?

Summer is next,  
But let spring pass and read this text,  
But all that I must say, I speak no lies,  
The only thing bad about spring is those ugly rodent flies!  
By Grace



**B & S DOMESTICS**  
**0772 5305 491**  
**0771 9573 355**



Sales and repairs of  
 • washing machines  
 • tumble dryers  
 • electric cookers  
 • built-in ovens etc

*Over 20 years professional experience*

 **edie pebble**  
 Pod 14 Amble Harbour Village



Beautiful handmade gifts, vintage treasures and nautical decorations

Amble Harbour Village Pod 15  
 Open daily 10am - 3pm



**PRODUCED IN NORTHUMBERLAND**

**Seriously good coffee.**  
 Roasted in Northumberland. Enjoyed everywhere!

**Retail. Wholesale. Online**  
**MOCHAMONDO.CO.UK**

## Swimming to the end of the Earth to protect Antarctica

A Northumbrian marine conservation volunteer will be swimming in Antarctica to campaign for greater protection of its precious seas and marine species.

Jane Hardy from Howick only learned to swim 12 years ago. She has been undertaking intensive training to prepare for the epic Antarctica2020 event since November.

"I'm not the best swimmer in the world, but I do have determination and stamina" she said, adding "I knew this would be a lifetime experience and I simply had to go for it."

Jane's training regime has been to do a cold water sea swim virtually every day since the start of November, gradually building up distances and improving times while enduring water temperatures as low as 4 degrees Celsius without a wet or drysuit. This is to help her prepare for swimming in the almost freezing sea she will face in Antarctica.

"The trip stands for everything I believe in," Jane said. "It's an opportunity to highlight what we are doing to the planet and I'd like to educate and ultimately help protect the area."

"I love everything to do with the ocean, I clear my local beach



Jane Hardy

of litter every day when I walk the dog. I volunteer for British Divers Marine Life Rescue (BDMLR), rescuing marine mammals along this stretch of coast, and I've seen seals entangled and suffering horrific injuries due to pollution, so it only makes sense that I fundraise for BDMLR alongside this series of swims too."

Visit Jane's Justgiving page at [www.justgiving.com/fundraising/jane-hardy13?utm\\_id=25](http://www.justgiving.com/fundraising/jane-hardy13?utm_id=25).

To find out more about the campaign itself visit [www.antarctica2020swim.com](http://www.antarctica2020swim.com).

## Cromie Pharmacy

### Get your vaccinations with us

Cromie Pharmacy now offers a full range of vaccinations, including:



- Seasonal flu
- Travel vaccines, including Yellow Fever
- Pneumonia
- HPV
- Chickenpox

Please ask for more information

**Flu can be a serious illness ... are you at risk?**

You need to get the flu jab every year. The flu jab is quick, safe and free\* To book your jab, visit

**Cromie Pharmacy.**

This is an NHS funded service **NHS**



\* Those not considered 'at risk' may incur a charge. Ask our pharmacist for details.

**158 Percy St, Amble 01665 710 896**  
**info@cromiepharmacy.co.uk**

## Are you thinking of selling your home?

Your local Yopa agent is valuing homes in your area

- Fair fixed fees from £889<sup>1</sup>
- Rated five stars on Trustpilot based on thousands of customer reviews
- Over 10,000 people trusted Yopa to sell their home last year<sup>2</sup>



Contact your local Yopa agent Elizabeth Humphreys on 07713 072 306 or at [elizabeth.humphreys@yopa.co.uk](mailto:elizabeth.humphreys@yopa.co.uk)



If you refer a friend to Yopa and they sell their home with us, we'll send you a £100 gift card to say 'thank you' - and they'll get £100 off their fee.

1. Terms and conditions apply. Does not include share sale packages.  
 2. Based on properties listed between 1st January 2019 and 31st December 2019.



**Yopa**  
 A Smooth Move





**H**appy New Year to you all. Welcome back to Trust Life on a cold blustery winter's day.

Hopefully you enjoyed your Christmas celebrations and are looking forward to 2020. I can hardly believe we wrote the Amble 2020 document all those years ago and its arrived already!

To recap on some of what was written into Amble 2020 and what we hoped to achieve for the town: New focus for the town through tourism, increased access to and promotion of water sports and outdoor activities, indoor visitor attraction, hotel and car parking (always car parking!). While it has taken some time, the hotel is open, we have an indoor visitor attraction that is also a conservation project that aims to protect our fishing

fleet, the town is increasingly seen as a destination rather than a passing through location and has seen a massive increase in visitor numbers and holiday bookings. We have also had some

*"We've had some great press for our high street"*

great press for our high street and hope to see more when our National Bird Sculpture Trail is complete. So positive progress has been made and there is still more to come as we work towards our superseded Economic Development Plan.

Amble recently featured in the Daily Mirror as a town having a thriving high street. We have been lucky in having very

few empty premises and those that have been vacated appear to have been snapped up quickly. There is no doubt that the nature of our streets and purchasing habits are changing dramatically and we have been banging on for some time about 'using it or losing it', so we cannot complain if we lose businesses through lack of trade. And while many complain about the number of hairdressers, nail bars and cafes – they are things you cannot buy online. There's no point in complaining after the event, so support what we have now!

Next – progress on the Sculpture Trail. Letters have been sent out to 28 artists inviting them to attend a 'walk the route' day. To-date (which is only four days after the letters were sent

out) 14 have accepted the invitation and others have asked for information packs as they are unable to attend on the day. All in all it sounds as though we will get a positive response, which is encouraging.

We have also contracted with an animation company called Animmersion, although we have not yet commissioned the final types of platforms or apps. There are so many options for what we can do (depending on budget) and we really want to engage with as wide an audience as possible.

Julia and Trust staff  
[julia@ambledevelopmenttrust.org.uk](mailto:julia@ambledevelopmenttrust.org.uk)

## Wildlife Trust Events: Feb - March

**A**ll our events with full details and booking are available online here <http://www.nwt.org.uk/whats-on>. Under 18s must be accompanied by an adult.

**Wildlife in Oils with Diane Patterson, Hauxley Wildlife Discovery Centre, Sat 08 Feb. 10:00 - 16:00**  
Oil painting with a pallet knife and brush on wood, canvas or board. Suitable for all levels of experience, beginners welcome. All materials supplied. Adults only. £45 per person. Contact Diane for more information and to book on 07971846624

**In Focus, Hauxley Wildlife Discovery Centre, Sun 09 Feb and 08 Mar - 10:00-16:00**  
In Focus experts will be on-hand with a range of optical equipment such as telescopes and binoculars allowing you to try before you buy. Free event, drop in any time during the day.

**Signs of Spring Mystery Trail, Hauxley Wildlife Discovery Centre, Sat 15 Feb - Sun 23 Feb - 10:00-15:00**  
Follow the clues and see if you can unearth all the secret signs of spring to win a prize. Question sheet from The Lookout Café and hand your answers in at reception. £3.50 per child.

**A Day of Mindfulness, Hauxley Wildlife Discovery Centre, Sun**

**23 Feb and 29 Mar - 10-15:30**  
Our mindfulness days are open to everyone and provide a valuable antidote to stresses and busy weekends. Whether you are new to mindfulness meditation or have some prior experience, you will find these days calming and energising. Led by Michael Atkinson, Director of School of Mindfulness. For info or to book, visit [schoolofmindfulness.co.uk](http://schoolofmindfulness.co.uk) or call 07577 439412. £40 (£30 conc). Lunch not included.

**Catch My Drift: What's Next?, Hauxley Wildlife Discovery Centre, Thurs 27 Feb - 17:00 - 18:30.** The team will be hosting a talk to thank everyone for their support and discuss what happens next. Free event everyone welcome. (See also p8)

**Bird Watching Basics, Hauxley Wildlife Discovery Centre, Sat 07 Mar - 10:00-16:00**  
This workshop is designed for beginners who want an introduction to birds and bird watching. Starting in the classroom, we discuss bird families, terminology, tips for birding in different habitats, ID tips and the use of optics and guidebooks. Please bring your own binoculars and outdoor clothing. Guidebooks and telescope provided. Lunch not provided. This is an adult only workshop. £15 per person. No dogs please.



Red squirrel at Hauxley Wildlife Discovery Centre. Photo by Tim Mason

## Health walks in Amble area

**A** new Health Walks leaflet is now available giving details of walks in the Amble area. There are starter walks which last around 30 minutes and are not strenuous. For the more active, there are intermediate walks, which last for up to 60 minutes and may include a little climbing. For the most adventurous there are advanced walks, which last up to 90 minutes and can include some slopes and inclines.

All walkers are advised to wear sturdy footwear and bring waterproofs. All walks are free of charge and led by trained volunteers who are there to help and encourage participants. It is a good idea to bring along some drinking water and a little money as there is sometimes a stop along the way or afterwards for tea or coffee. Only assistance dogs are permitted to attend. Car sharing is possible for out of town destinations.

The group meets in the car park near the Town Square. If you are turning up for the first time, please come along ten minutes early so that you can register.

Further details can be found at [www.activenorthumberland.org.uk](http://www.activenorthumberland.org.uk) or [www.walkingforhealth.org.uk](http://www.walkingforhealth.org.uk) or follow on Facebook at Active Northumberland Health Walks or Twitter @ActiveNland or by phone 01670 622200.





# Reports from our County Councillors



in Amble, Hauxley and North Broomhill.

## Lord's Mayor's Field

Park Leisure has been let down badly by its contractors in the maintenance of cutting the Lord's Mayor's Field, grass cutting at times going weeks, being badly overgrown having a devastating impact on the ability of our residents to enjoy the open space. When the grass cutting season begins again, the work will be carried out by County Council Operatives taking on the contract on behalf of Park Leisure, ensuring the field is regularly cut throughout the growing season enhancing it's appearance and making a significant improvement on this year's performance. Many thanks to Brian Docherty Park Leisure and Bob Hodgson Local Services for coming together with this proposal.

## All happening on Links Avenue

On 19 Sept we had a transporter with a static caravan on board coming up Links Avenue causing mayhem. We had outriders knocking on doors asking residents to move their vehicles. When questioned from residents, stating it was totally inappropriate bringing a transporter this size up a residential street with an infant school on it and children being picked up at this time, the outriders were obnoxious towards residents saying cars would be scratched / dented if not moved. This being totally unacceptable behaviour from the

Terry.Clark@northumberland.gov.uk

haulage company.

I contacted council officers explaining residents concerns and also sent photos.

Officers wouldn't expect them to come up Links Avenue in the past, they have always used Marine Rd / Percy Dr. NCC Officers have spoken to the haulage company.

Still with Link's Avenue

On 24 Sept we had a blocked drain along Burton Rd causing effluent / water to run out of a gully on the corner of Burton Rd / Links Avenue also near the entrance to the School and cottages Burton Rd. It flooded gardens, school entrance and was flowing down Links Avenue.

NCC and Northumbrian water was contacted, and within a few hours we had an operative from Kwick Flow trying to locate the problem - once found on Burton Rd his jetter was not powerful enough.

Technical support was called in with a vactor unit flushing the blockage away. The operative said wet wipes caused the blockage so please do not flush wet wipes down your toilet.

Council officer Mitch Young was on hand organising and closing footpaths along Burton Rd, cleaning up as much as possible down Links Avenue. Early Friday morning we had a decontamination team on site to clean and disinfect all footpaths, gardens and roads which were affected.

A camera unit was also used to look into the sewers to identify issues within the network.

Many thanks to Kwick Flow, Northumbria Water and NCC Officer Mitch Young for an efficient job well done.

The new Morrisons store appears to be proceeding well and the target opening date before Easter seems very likely.

Over the next few months we should see some activity regarding road safety. Several cameras will be erected at key points at the entrances to the town, these cameras will not be speed cameras but will

having a few cases occurring recently. I would urge anyone seeing these acts to report it to the

Police, they will treat the information confidentially but if it is not reported they can't do anything.

Several residents have asked me about the proposed



Trees at the Artique site at the bottom of the Wynd will not be removed

be number plate recognition cameras which will assist the Police in tracking criminals' journeys. I am pleased to be helping to fund these cameras from NCC's member's small schemes money available to me.

Every so often we get cases of mindless damage or vandalism in the town, we seem to be

development of the Artique site on the Wynd into housing, many were concerned about losing the beautiful trees in the area. I would like to assure everyone that these trees will not be removed, they have conservation orders on them and the developers do not want to remove them even if they could.

Jeffrey.Watson@northumberland.gov.uk 0780 238 5367



A plaque on the history of Low Hauxley was funded by Hauxley PC



• December saw the first Christmas tree in High Hauxley and was well received by the villagers.

• The Parish Council funded a history of Hauxley plaque in Low Hauxley. (See photo above.)

• A community litter pick was held in the summer.

• The bins were replaced in Low Hauxley and the Links car park.

• The village square has also been improved with some new gravel.

• The Parish Council will be holding a litter pick on Saturday 28 March from 10:30am. We would love to see you there. Refreshments will be served in the village hall afterwards.

Contact details: Parish Clerk: Mrs J Reynolds Tel: 07786 255 649

Email: hauxleypc@hotmail.co.uk Website: www.theambler.co.uk/category/local-councils/hauxley-parish-council/

## Happy Year of the rat!



LitterBugs are supporting Northumbrian Water's Bin the Wipe campaign. Below, a 2-minute beach clean board

It's now over two years since Blue Planet II, and the environment is being discussed daily on the TV and in Social Media. The world's leading scientists on climate change warn that we have to act NOW if we want to make a difference. (We prefer science over Donald Trumps rants).

In the Australian fires, we saw millions of people donating money to help the animals affected. People care about wildlife and that's the main reason why we are continuing with our litter picking and beach cleaning. We are regularly finding dead small animals in cans, bottles and other litter.

There are almost three million small mammal deaths a year in the UK caused by litter. Let's try and stop this and spread the word.

We wanted to say a big Thank You to Newcastle Building Society and the

Community Foundation. We were awarded a grant to cover the costs of two 2-minute beach clean boards. They should be with us soon, and will be used over the year to encourage and enable people to go out and collect some plastic and litter themselves.

We also wanted to thank Angie's Tavern and the Red Row Brick Club

for taking our #BinTheButt beer mats. Cigarette butts are one of the biggest polluters of our oceans and we are trying to encourage smokers to put their used butts in a bin. We regularly see people throwing them on the ground, and ultimately most

of these butts will end up being washed down a drain. They then end up in our waterways and seas. If you know someone who does this, please tell them to stop!

We are also helping Northumbrian Water



promote their 'Bin The Wipe' campaign. An estimated 11 billion wet wipes are used in the UK annually. In the area covered by Northumbrian Water, in 2019, 64% of the 15,681 blockages cleared were caused by wet wipes. The money spent on this could be put to better use. Make-up removal is one the biggest use of wet wipes. If you use wet wipes, please try and cut down or change to another method such as a washable cloth. If you have to use them, ensure you bin them afterwards. We often find wet wipes on our beaches, as anything flushed down a toilet can end up in the sea in bad weather conditions.

We will be organising beach cleaning and other events throughout 2020. The Great British Spring Clean takes place 20 March - 13 April. Please join us if you can. Contact details [litterbugsnorthumberland@gmail.com](mailto:litterbugsnorthumberland@gmail.com).

Lynne Russell,  
LitterBugs

## Dry Water Arts workshops

February

- 7 Needle Felting 1:30 pm - 4:00 pm
  - 8 Stud Earrings 1:30 pm - 4:30 pm
  - 13 Candle Making 1:00 pm - 4:00 pm
  - 14 Bookbinding - Heart Shaped Books 1:00 pm - 4:00 pm
  - 15 Silver Clay Hearts 1:00 pm - 4:00 pm
  - 20 Silver Wrapped Ring Workshop 1:00 pm - 4:00 pm
  - 21 Shibori Workshop 10:00 am - 1:00 pm
  - 22 Silver Stacking Rings 10:00 am - 2:30 pm
  - 28 Lino Printing Workshop 1:30 pm - 4:30 pm
  - 29 Spinning Rings 10:00 am - 2:00 pm
- March
- 5 Printed Eco Food Wraps 1:30 pm - 3:30 pm
  - 6 Kitchen Lithography 1:00 pm - 4:00 pm
  - 7 Silver Clay Jewellery Workshop - Inspired by Nature 12:30 pm - 3:30 pm
  - 12 Japanese Accordion Book Workshop 1:00 pm - 4:00 pm
  - 13 Silver Clay Paper Type Workshop 1:00 pm - 4:00 pm
  - 14 Stone Set Rings Workshop 1:00 pm - 4:00 pm
  - 19 Anodised Aluminium Jewellery 1:00 pm - 4:00 pm
  - 20 Textile Art Wall Lamp 11:00 am - 4:00 pm
  - 21 Sea Glass and Silver Workshop 1:30 pm - 4:30 pm
  - 26 Potato Printed Cushion 1:00 pm - 4:00 pm
  - 27 Stone Set Pendent Workshop 1:00 pm - 4:00 pm
  - 28 Silver Clay Bead Workshop 1:00 pm - 4:00 pm
- More information including prices and how to book, at [www.drywaterarts.uk](http://www.drywaterarts.uk). See also their Facebook page.



## Funeralcare

Our caring staff are here  
to listen and advise you,  
24 hours a day, 7 days a week



Coquetdale Cottage, Queen Street, Amble  
Tel: 01665 710437

## Lionheart Cleaning

Commercial & Domestic Cleaning Services

**Your One Stop Cleaning Service Provider**

Our ever expanding teams of fully trained and insured operatives are insured and able to carry out all of the following aspects of Domestic and Commercial cleaning for you, or your business.

|                        |              |                  |
|------------------------|--------------|------------------|
| Carpets and upholstery | Conservatory | Pressure washing |
| Windows                | Roofs        | End of Tenancy   |
| Gutters/Fascias        | Commercial   | Post Build       |
|                        | Kitchens     | General          |

01665 713448 [www.lionheartcleaning.co.uk](http://www.lionheartcleaning.co.uk)





# Amble Town COUNCIL

All meetings at 6pm unless stated otherwise  
Town: 13th February, 12th March, 9th April  
Amenities: 26th March

|                   |   |   |                   |  |   |                   |  |              |
|-------------------|---|---|-------------------|--|---|-------------------|--|--------------|
| <b>EAST WARD:</b> | Helen Lewis,<br>Ian Parks,<br>33 Warkworth<br>Avenue,<br>Warkworth.<br>NE65 0TP | Craig Weir<br>(Chair/Mayor)<br>76 Priory Park,<br>Amble<br>NE65 0HY<br>01665 712342 | <b>WEST WARD:</b> | Jeff Watson<br>Tracey Hinton,<br>13 George<br>Street,<br>Amble<br>NE65 0RZ<br>07802 385367 | David Bewley<br>11 Brinkburn<br>Place<br>Amble<br>NE65 0BJ<br>07525713086 | <b>CEN. WARD:</b> | Jane Dargue<br>Kate Morrison,<br>10 Sylvia's<br>Close,<br>Amble<br>NE65 0GB<br>01665 711191<br>07795360513 | Clive Foxley |
|-------------------|---|---|-------------------|--|---|-------------------|--|--------------|

## AMBLE LIBRARY

Please take a few minutes to look at the NCC consultation about libraries as any decisions taken after the responses are analysed could well affect our library. In the last consultation, many may remember that the general feeling was that Amble library would close and everyone fought hard to keep it open. If you feel that the library is important- whether for borrowing books/cds etc. or accessing a computer or for research, you must respond to the consultation and make your views known. Find it at [www.surveymonkey.co.uk/r/NCCLibraryConsultation](http://www.surveymonkey.co.uk/r/NCCLibraryConsultation)

Lots of areas have lost their libraries completely, whilst others have been amalgamated in a 'hub'- another building with more uses. If you want a library facility in the town- in whatever form- you must not only tell NCC why it should stay but you must also use it to prove that it is necessary.

## WEST CEMETERY

Utility work will begin shortly, so please take care when entering the cemetery. Once the ground has settled, we hope to put new tarmac in place around the entrance and the turning circle at the top of the drive. A new fountain system will be installed to complete the works. It will not be long before the current interment section M will be complete and burials move to section N. There will be no hard paths here but room to move between the plots.

Cremated plots will still be available in section M for a while due to the changes made at the top of the drive and an area at the end of this section. Be aware that memorial stability checks will be taking place in some of the older sections soon.

## COUNCILLOR'S CORNER

Amble Town Council is undertaking a review of the sport and recreational activities currently on offer within the town. Many facilities are well-known and well used - the gym and swimming pool which are now part of the Park Leisure complex, the various football teams and water-sports provided for in the area.

What has become clear during this review process is the vast amount that actually is on offer in the town and the sheer range of activities that cover all ages - everything from health walks, crafts, yoga, dance and armchair keep fit to Hybrid Kick Boxing and Boogie Bounce. Perhaps some of these activities are ones in which there may be a wider interest but people are unaware of what is on offer.

We hope to work with Active Northumberland to highlight, co-ordinate and support all activities and to look towards finding provision for other activities that are perhaps not catered for within the town. If you know of any fitness/health based activity that needs a higher profile, please leave details at [ask@amble.gov.uk](mailto:ask@amble.gov.uk).

*Cllr. Jane Dargue*

## PERCY DRIVE ALLOTMENTS

About four years ago the walkways here, which are widely used by the general public as well as allotment tenants, were repaired as there were many ruts and potholes. This was to make them safer for everyone. The Allotment Society helped with the cost but sadly a minority of individuals saw fit to abuse the new surface by using it by driving vehicles on it and now it is almost the same as it was before!

A possible cost of £8-£10k every 4-5 years is not sustainable so together with AAHS, we decided that removable bollards would be placed at the three entrances to prevent further damage and improve safety, while giving access, if required, in emergencies or to have bulk materials delivered. Emergency Services and the AAHS Committee as well as Council held keys to allow this. Within a few weeks, one lock was cut off and another bollard was removed completely! This is criminal damage and theft- the police were informed and CCTV is being checked.

The missing bollard will be replaced- another £400+- but if this is removed again, not only will a prosecution be rigorously pursued but more solid permanent structures will be put in place. Permanent structures mean that no vehicles will be able to access the walkways. A great shame that unwarranted destructive behaviour has to spoil it for all.

## ESTATE WALKABOUTS

The quarterly looks at areas of the town under the responsibility of Northumberland County Council were halted whilst Homes for Northumberland was being restructured but have begun again with the next one due in March. Representatives from various departments involved in the housing and estates together with a Council member, a Police Constable and a tenant walk set sections and note any problems which need attention so these can be actioned. In the past these have resulted in items such as clearance of areas which saw fly tipping, repairs to paths, replanting or clearance of unsightly patches.

## MAYOR'S CHRISTMAS RECEPTION

It was wonderful to see so many people enjoying the entertainment at the reception. This is an occasion when those who help the Council or give their time voluntarily to do so much for the town and its people are invited along so the Mayor can thank them on behalf of the residents for all their hard work.

These people work tirelessly without thought of praise or reward other than helping others in some way, for example with activities, entertainment, assistance or just bringing a smile.

A very small gesture of thanks but such a wonderful opportunity to show appreciation for all they do to help make Amble the caring place it is.

## MEMORIAL GARDENS

The trees have been pollarded and the fence extensions added. The new information boards giving the history of the memorials and the town's commemorations during the WWI centenary are now in place for all to access. The narrow strip behind the fence on the George Street side should now have been cleared and concreted to minimise maintenance work. Councillors, volunteers and Amble & Warkworth Rotary members have been busy cutting down the planting by the fence so it will be easier to deal with before painting takes place around April or May. Sadly the pigeon deterrent, small spikes, have not completely kept them off the apertures so we are considering bigger spikes as their detritus is affecting the stonework. Contractors are being sought for the revamp work to be undertaken; also there will soon be a maintenance contractor appointed to regularly keep the area tidy.

TOWN COUNCIL OFFICES, FOURWAYS 2, AMBLE. NE65 0DT Tel: 01665 714 695 [www.amble.gov.uk](http://www.amble.gov.uk)

Email [ask@amble.gov.uk](mailto:ask@amble.gov.uk) Twitter: @AmbleTC Facebook: [www.facebook.com/AmbleTownCouncil](http://www.facebook.com/AmbleTownCouncil)

Office hours: 10.30am-12noon & 1.30-3p.m. Monday to Friday Vicki Smith, Town Clerk Minutes available to view in Office or online



## Coquet Churches Together

By the time you read this Christmas will be a distant memory. For Christians Christmas is a time when God showed just how much he loved us that he sent his Son Jesus to us in the form of a baby born to Mary. One of the carols that is sung at Christmas is called 'Love Came down at Christmas' by Christina Georgina Rossetti.

In January Trinity Methodist Church in Amble, along with Methodist Churches across Great Britain, holds a Covenant Service in which we remember that God loves us and that there is nothing we can do to make Him loves us more and we respond with love and thankfulness as we offer ourselves afresh to spread His love through our words and deeds.

February is often thought of as the month of love because many people celebrate St. Valentine's Day. Traditionally an anonymous gift or card is sent to someone we love and many of us hope that we will receive a gift or card to show that we are loved.

This year pancake Tuesday is 25 February. The following day, Ash Wednesday was a time when you began to fast/gave up certain foods throughout Lent, a time of penitence to remember the sacrifice that Jesus made for us.

During Lent the churches that make up Coquet Churches Together will be holding their usual Lent lunches (homemade soup and a roll) on Wednesday 4, 11, 18, 25 March and 1 April, at the Parish Hall in Dovecote Street at 12.30 followed by a short reflection.

Why not come and join us and hear about how God's love can make changes in people's lives.

You may also like to join us for the annual World Day of Prayer service on Friday 6 March, 2.00pm at Trinity Methodist on Percy Street. This years service has been prepared by Christian women in Zimbabwe.

*Rev. Lynda Coulthard  
Trinity Methodist Church*

## Liz brings her humour and music

## Liz Cotton - 100% Cotton

Sharp, rude, clever and funny, the brilliantly entertaining, classical guitarist and songwriter Liz Cotton plays an evening of superbly crafted and mildly risqué comedic songs. Described as 'halfway between Victoria Wood and Loudon Wainwright III' Liz strums a life's worth of anxieties, humour and love into a slyly provocative show. You will never hear the name 'Boris' again in quite the same way.

Saturday 25 April 7.30pm. Amble Parish Hall, Dovecote Street, Amble NE65 0DX

Tickets: £10/ £8 conc/ £5 child Bookings: 01665 798271 or online [www.highlightsnorth.co.uk](http://www.highlightsnorth.co.uk)

## Warkworth Probus Club

Warkworth Probus Club Quiz Team triumphed recently at the cross-border Inter Club annual quiz, which ended in a tie between Warkworth and Berwick, but Alan Jones successfully answered the tie-breaker question.

The club meets on the third Thursday of each month at the Hermitage Inn, Warkworth at 12.30pm and new members are always welcome. For further details see [www.warkworthprobus.weebly.com](http://www.warkworthprobus.weebly.com)



*Pictured with the trophy are (L to R) : Jim Barrett, Ben Hopkinson, Alan Jones and Fred Calvert*

## Films at the Dovecote

## Friday 7 February at 7.30pm The Joker (15)

Forever alone in a crowd, failed comedian Arthur Fleck seeks connection as he walks the streets of Gotham City. Arthur wears two masks -- the one he paints for his day job as a clown, and the guise he projects in a futile attempt to feel like he's part of the world around him. Isolated, bullied and disregarded by society, Fleck begins a slow descent into madness as he transforms into the criminal mastermind known as the Joker. (122 mins)

## Friday 14 February at 7.30pm Judy (12A)

Winter 1968 and showbiz legend Judy Garland arrives in London to perform in a sell-out run at The Talk of the Town. It is 30 years since she shot to global stardom in The Wizard Of Oz, but if her voice has weakened, its dramatic intensity has only grown. (112 mins) *Renée Zellweger is phenomenally good in this captivating account of Judy Garland's final London concert run. The Guardian*

## Thursday 20 February at 1.30pm - Abominable (U)

When teenage Yi encounters a young Yeti on the roof of her apartment building in Shanghai, she and her mischievous friends, Jin and Peng, name him "Everest" and embark on an epic quest to reunite the magical creature with his family. (97 mins)

## Thursday 20 February at 1.30pm - film to be confirmed.

## Friday 28 February at 7.30pm Downton Abbey (PG)

The continuing story of the Crawley family, wealthy owners of a large estate in the English countryside in the early 20th century. (122 mins)

Tickets: £5 for over 18s, £3 for under 18s (unless otherwise stated) Please note that all under 12s must be accompanied by an adult. Tickets - Pre-book on 01665 713655 or on door. Please book to avoid disappointment. Other planned cinema showings: Le Mans and Official Secrets.

## Sullivan Associates

CHARTERED BUILDING SURVEYORS

Offering professional property advice throughout Northumberland

Building Surveys, Defects Inspections  
Plans drawn for extension and new build  
Planning Applications, Building Regulations Approval  
Disabled Access Advice, Party Wall and Boundary Matters  
Design and Project Management

Tel: 01665 513010

Email: [info@sullivan-associates.co.uk](mailto:info@sullivan-associates.co.uk)

Fourways 2 6 Dilston Terrace Amble Northumberland NE65 0DT

TELEPHONE ORDERS WELCOME  
01665 710 442  
MONDAY TO SATURDAY: 11.30AM-9.00PM SUNDAYS: 11.30AM-2.30PM  
\*\*\*\*\* NORTHUMBERLAND COUNTY COUNCIL  
1 BROOMHILL STREET AMBLE NORTHUMBERLAND NE65 0AN



## Vote for Amble East End Juniors



Our Tesco Bags of Help grant scheme has been successful and our project will be put forward to a customer vote in Tesco stores during January, February and March 2020. Just put a blue token in your chosen charity box in the Amble store.

Voting will take place from Wednesday 1 January 2020 to Tuesday 31 March 2020. Please help and vote for us!

Amble East End Juniors Under 8s Sharks & Seagulls pictured above with John Kelly in their new Joma Alaska Everest Bench Jackets sponsored by Kelly Construction!

Amble East End Juniors Under 7s Puffins and Pirates pictured below in their new Joma Alaska Everest Bench Jackets sponsored by McDonald's Alnwick!



## Amble RNLI Coffee Mornings

Amble Lifeboat Fundraisers welcome you along to our regular coffee mornings, between 10am and 1pm, upstairs in the Lifeboat Station. Enjoy lots of lovely home-made sweet and savoury bakes, home-made soup, good company and support our fantastic volunteer crew. (We are dog friendly)

Dates for your 2020 diary:  
16 February, 15 March, 19 April

## Choral Society's Spring Concert

Alnwick and District's Choral Society's spring concert will be held at 7.30pm on Saturday 21 March 2020 at St Paul's Church, Alnwick.

The Choir will perform Puccini 'Messa di Gloria' and Vivaldi's 'Gloria'. Tickets will be available on the door £12, small concession for Friends of the Society, students free.

In May, Alnwick and District Choral Society will perform as part of the Combined Choirs of Alnwick and District at the Sage in Gateshead.

The Choirs will perform Carl Orff's Carmina Burana on Sunday 17 May 2020 at 7pm.

For further information <http://www.alnwickchoralsociety.co.uk/>

## Amble Youth Project

2019 has been an exciting year for the Amble Youth Project although there have been challenges.

We at the charity are immensely grateful to our local community who have shown their support and helped us along in a year of change, development and achievements. Your help has enabled support and care to be shown to many local children and young people and has helped them to grow well and to shine.

As we move into 2020 we take forward all that we, the children and young people have achieved. We build on these positives.

We welcome Matthew Mahoney as the charity's service manager and using all his experience and knowledge, the charity is excited for all that he will bring and the new activities the charity hopes to be starting this year.

The start to this year is a particularly exciting one as we begin straight away with two very special events where our young people show their care and respect for others.

Saturday 11 Jan saw the

gap bridged with young people serving lunch to some of our older folk in Amble. Money was raised for a free three course lunch given by the young people and they used their initiative to raise the money making and selling cakes.

On Saturday 18 Jan a coffee morning was organised by the young people of our Saturday Youth Café to raise money for some equipment for themselves and to help homeless people in Newcastle.

Already these young people have plans for other events that help others.

Please visit our website [www.ambleyouthproject.org](http://www.ambleyouthproject.org) for more information about how these events went and other plans and initiatives and of course all our news and activities

We all hope your new year has seen a good start and wish you all a special 2020. A new decade .... we will see much change over the next 10 years ... our investment into our local children and young people today will help shape their future and our future as a community.

*Lara Millar*

*Amble Youth Project*

## Performances at NTC Dovecote centre

**Friday 13 March at 7.30pm NTC's Angels of the North**  
Tickets £10

Adapted from the works of Joyce Quin and Moira Kilkenny Performed in NTC's unique style with humour, warmth and poignancy, Angels of the North is a collection of stories and achievements from some of the North East's most notable women, some of whom are household names that you may be aware of already, others are less well known and are in danger of being forgotten altogether, but one thing is for certain: all of them are women to be proud of.

**Friday 27 March at 7.30pm Billy Mitchell and Bob Fox**  
Tickets £16

Waters of Tyne to Fog on the Tyne Two of the UK's best known and loved singers - Billy Mitchell and Bob Fox are taking to the road together in Spring 2020 to tour their show 5 Star B&B throughout the UK - SELLING FAST!

Tickets - Pre-book on 01665 713655 or on door.

## East Coquet Local History Society

Meetings in St Mark's Church Hall, Wellwood Street 7.30pm

February 20: Talk/slides by Atholl Swanston. Social evening.

March 19: 'Old Low Lights and its heritage' by Martin Kenny

April 16: 'The Bainbridges, from department store to Eshott Hall' Elizabeth George.



## BOTANICA BEAUTY



Many of you may know me from my three amazing years at Naked Nun on Leazes Street, Amble, where I was based from October 2016. In my time at Naked Nun, I have met many lovely clients many of whom have become friends. Upon the sad passing of my wonderful landlord, Richard Simmonds, the house and Naked Nun have been put up for sale; which brought me to my brand new venture...

Botanica Beauty was created in August 2019 and I've never looked back.

The demand has been overwhelming and the busy location at 59 Queen Street has made Botanica Beauty ever so popular with both existing and new clients - who I would like to take this opportunity to thank them for their continued custom and support.

I have over 16 years in the beauty industry using only the best products, services and training providers around. My most popular treatments include CND Shellac, CND & CJP Acrylic enhancements, Lash lifts and Official High Definition Brows.

Pop in to say Hi, or grab a pricelist.

To book an appointment you can either pop into the salon, call 01665 714100 or download my app 'Book In Beautiful' from the App Store, register using your name, number and email address.

From there you can book, change or cancel all future appointments, pay for treatments on the app and purchase gift vouchers.

Hope to see you all soon,

*Donna*



## CHARLIE'S AESTHETIC ANGEL

- Advanced Lip Techniques with Dental Block
- Dermal Filler

- Micro Needling
- Mesotherapy
- Plasma Skin Tightening
- Fat Dissolving Injections
- Chemical Peels

- Carboxy Therapy Mask
- L.E.D Light Therapy
- Skintag and mole removal



With over 24 years experience in the industry and 8 years private medical including phlebotomy.

I am fully insured and continually attending further courses to bring new treatments to our ever growing clinic.

Call Becki to book a free consultation.

Find all special offers on: Charlie's Aesthetic Angel Facebook and Instagram pages.



BLOSSOM CLINIC • 59 QUEEN STREET • AMBLE • 01665 714100



## Persimmon files design plans for new Amble site

Design plans have now been lodged for two housing developments, and a third outline plan for seven homes on the Artique/Marina Arms site has been given the go-ahead.

272 new houses at Percy Drive will be built by Persimmon/Charles Church after the land was sold to them by Cheviot Holdings. Outline planning permission was given to Cheviot Holdings in October 2017 and the company intended to commence building, but due to circumstances within the company, executive chairman Maurice Sewell decided to sell the land.



Image from Persimmon planning application

He told The Ambler, "Due to tragic circumstances in the organisation last year, I found myself having to deal with all the issues on my own. I decided the best way to keep the development rolling was to dispose of the site to Persimmon."

Cheviot Holdings still intend to progress their second site

on the A1068 at the entrance to Amble. The Hauxley View development of 166 homes received outline planning permission in 2017.

"We are still considering the Hauxley View site. We are hoping we can come back and play a full role in Amble. We are also still supporting the initiatives we promised in Amble

– especially the Amble Youth Project," said Maurice.

At the beginning of the year, Persimmon lodged their plans for 3 - 6 bedroom properties on the Percy Drive site, with 15% being designated affordable housing.

You can see the application on NCC's planning website. Ref: 19/04919/REM

## New Gloster Hill homes

Designs for six houses on land north of Gloster Hill were submitted to Northumberland County Council in January. This development was given outline planning permission in September 2016. See more on NCC's planning website. Ref: 19/04268/FUL



### Some of your comments

"Persimmon: No sign of much needed bungalows? Aging population, it should be factored in to new sites. Wouldn't want to be down near the burn at the end of the site, it has and always will be a huge bog. LL

Gloster Hill: It's above the flood plain built into the hillside. Only problem is the hill is probably glacial not rock, hence I believe the houses above are concerned about landslip downwards. JY

Artique: Times change and things move on. Not everyone likes change no matter what it is. Amble has changed and grown massively over the last 10 or so years, I think most people would say for the better. AJ



Outline permission for seven homes have been agreed on the Artique site

Seven homes on the way into Amble, have been given the go-ahead, despite attracting almost 400 opponents on a petition.

Hindmarsh Homes is seeking permission for a 'high-quality and inherently sustainable' set of two terraces on the current site of Artique antiques store and café, formerly the Marina Arms pub, on the A1068.

The proposals, which

were lodged last March and would see the existing building demolished, were approved at the January meeting of the North Northumberland Local Area Council.

Each four-bedroom house would have a three-storey main building facing onto the A1068 with a single-storey section to the rear connecting to an attached garage.

The properties would all have a sheltered courtyard area

## Houses to be built on Artique site

at the back as well as outdoor terraces to the front and rear on the second floor.

Access will be from the existing, but improved, entrance on the southern edge of the site, off Riverside Park.

Each property would have two parking spaces in addition to a garage, while the site would also feature visitors' parking bays and a bin-collection area.

The bid has sparked just three formal objections, but also a petition against the scheme featuring 382 signatures.

Amble Town Council's response says: 'While Amble Town Council does not object to the principal of residential dwellings on this site, we feel the design should more appropriately reflect and consider the heights of the surrounding properties rather than the highest property across the road from the proposed development.

'We will be sad to see a popular and valuable tourist retail outlet disappear from one of the entrances to Amble.'

However, the planning officer's report states: 'While the height difference remains with existing development to the north, the proposed units do not include window openings to this elevation, which will lessen adverse amenity impacts including privacy and overlooking.'

It adds: 'The design and materials proposed are contemporary in appearance, but would appear complementary to neighbouring residential development.'

Approval would be subject to the completion of a section 106 legal agreement to secure a £4,200 ecological contribution to the council's coastal mitigation scheme.

Ben O'Connell  
Local Democracy Reporter Service