



# The Ambler

## Amble's Community Newspaper

Issue 131 Dec 2021 / Jan 2022

### Fruit of our labours



Around 20 trees including apples, pears, plums and cherries have already been planted at the Welfare.

A community orchard is planned for Amble and volunteers are being asked to get involved.

Amble Development Trust have already planted around 20 fruit trees and are looking to plant many more.

Andrew Gooding told The Ambler, "There's a lot of talk about the environment now and it's increasingly apparent that communities need to grow more trees. An orchard is an ideal way to and capture carbon, provide food, and encourage healthy eating."

The Trust is encouraging people to get involved, and the hope is that eventually people can help themselves to the fresh fruit, and some can be used by the food bank.

"It will be another three to four years before we see any fruit," said Andrew, "but if anyone would like to get involved in planning, planting and maintaining the community orchard, please get in touch."

You can contact Andrew: [andrew@ambledevelopmenttrust.org.uk](mailto:andrew@ambledevelopmenttrust.org.uk)

More trees to be planted; see Trust Life p15, and Town Council p16

Christmas event called off amid torrential rain

## Winter weather foils festival

• We will try again say organisers

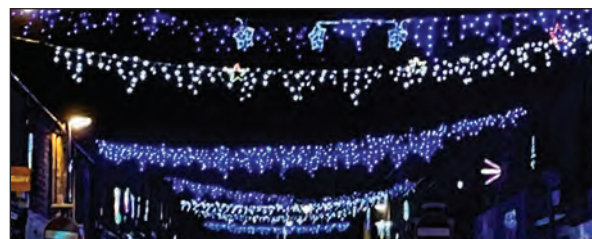
Organisers of the Amble Festival of Light were forced to call off their planned event at the Little Shore, after torrential rain and high winds brought waves crashing over the breakwater, bringing public safety into question.

The unique event featuring original music, lights, kayaks and a magnificent floating phoenix was due to take place on 21 November, but while setting up the lights and sound installations, the bad weather set in.

A spokesperson for Amble Events Committee said "It was such a shame we had to call it a day, but the weather was atrocious when we were setting up, and meant not only was some of the equipment at risk, but the waves could have endangered the public. So many individuals and community groups volunteered their time for this event, and so many people were looking forward to it. It would have been a magical evening and I hope we can reschedule in early December."

Fortunately Santa managed to drop in to the Fish Shack and meet some of Amble's youngsters.

Photos of the rescheduled event will be posted on our website and social media



The town's Christmas lights were switched on midweek

### Why was there no parade this year?

Earlier in the year, Amble Events Committee made the difficult decision that due to Covid and continuing uncertainty around large gatherings, they would not hold the annual torchlight procession. Instead, a sound and lights installation event was planned for the Little Shore and pier area.

The event spokesperson said: "This meant that rather than being crowded together shoulder to shoulder along Queen Street, as happens during the parade, people could keep their distance and walk at their own pace in an area with more open space. Stewards would be located around the area to help manage the flow of people, something that would be impossible on Queen Street."

### Will the parade be back?

"YES! Absolutely. It is one of Amble's most popular events and we are looking forward to the next one being the best parade ever."

Eight year old Charlie with Santa and his helper



Above: Tommy (4) and Ayla (4) were very pleased to meet Santa

Below: Zara (4) and Isaac (4) were a little unsure about meeting the man in red.

Bottom: Ebony (11) Aiden (7) and Elsie (3) who needed a little reassurance.







# Step inn to Christmas

**CHRISTMAS PARTY NIGHTS • CRACKING CHRISTMAS FAYRE  
DELICIOUS CHRISTMAS DAY LUNCH • CHRISTMAS STAYCATION  
NEW YEAR'S EVE STAYCATION**

The Amble Inn is the perfect place to eat, drink and explore this Christmas, with a fantastic festive line-up. Think roaring fires in a cosy pub, delicious home-cooked food made with the finest seasonal ingredients and all washed down with an extensive range of high-quality drinks.



**BOOK DIRECT FOR OUR BEST PRICES**

[inncollectiongroup.com/amble-inn/christmas](http://inncollectiongroup.com/amble-inn/christmas) or call 0191 580 3610

All Christmas events may be subject to change due to COVID 19

Get social with us!





## Congratulations to...

It was a big night of wins for Amble businesses at two glittering award ceremonies held at the beginning of October.

**Headmasters** was the Best Barber regional winner at the Englands Business Awards held on October 3 at the Crowne Plaza Hotel in Newcastle. Owner Dawn Robertson said, "I am absolutely over the moon. Words can't really express how I'm feeling right now. I am so grateful to everyone for their continued support. It really means a lot."

**Styles by Helena** who was the Best Morpeth business winner at the Englands Business Awards. Owner Helena Allan said "I'm proud of my stylist Natalie Henderson and grateful to all our loyal clients who made this happen."



L-r: Natalie Henderson and Helena Allan of Styles by Helena, and Casey Hall and Kay Harding of Beauty Queen

**1911 Coffee Co.**, who won a TripAdvisor Travelers Choice Award this summer, and was a regional nominee at the Englands Business Awards. Co-owner of the family business

Joe Macaulay-Yeoman said, "We sadly didn't win the main prize but we're immensely proud of the team for making it to be finalists (top five) in the "best coffee shop" category."

**Beauty Queen**, who won a 5 star Beauty Salon award at the NE Beauty Industry Awards held at the Gosforth Park Hotel.

Salon owner Kay Harding said: "We were nominated by our clients which was such a shock as we didn't even know the awards were taking place. We were in the category for five star Beauty Salon against nine other salons for Northumberland, and we won."

"I have been so close three times before, coming away with highly commended awards, so to finally win meant so much to me."

"Both Casey and I work so hard and I have built my business up over the past eight years, so to have that hard work recognised by our clients makes it all worthwhile."

## Remembrance Day



A very large turnout gathered in the Town Square for Amble's Remembrance Sunday Service. The service included a two-minute silence marked by the Last Post played on a bugle, a poppy wreath laying ceremony from community organisations followed by a short service from Coquet Churches Together.

Photos Andrew Mounsey and Judith Hardisty



Youngsters from Amble First School, Amble Links First School and Brambles took part in a Remembrance service in the Town Square on Armistice Day. Pictured above with some of the children are: Rev Velda Nicholson, David Shoemaker (Royal Navy Police), together with Peter Proctor Cannon, Henry Place (trumpeter) and Kevin Wright (all 15th- 19th Kings Royal Hussars.) Photos Anna Williams and Ian MacKarill

### THE MAD JAM WOMAN & Pride of Northumbria

**Award winning  
Preserves  
& Relishes**

Fourways One  
Bridge St, Amble NE65 0DR  
07766 857680

Also available at the Seafood Centre  
[www.madjamwoman.com](http://www.madjamwoman.com)



## Amble Pin Cushion keeps on winning

Amble Pin Cushion has once again been honoured to receive the Prestige Awards North East Lifestyle Shop of the Year, previously winning it in 2020.

They have also been informed that they have been winners in the Small Business Awards 2021, as Best Clothing Alterations Business – Northumberland.

Both awards come as a great boost for this local business, whose small team has worked hard to survive and keep moving forward during various lockdowns and restrictions in the past two years.

The shop has had a makeover inside and out, and a new apprentice, Kim Brannon, is learning the ropes.

During the first lockdown, Amble Pin Cushion acquired Picrosso cross stitch designs, which they re-branded as Northumbria Knit and Stitch. Now, samples of all the cross stitch local icons, scenes and samplers can be viewed in store, as well as their modern Guernsey knitting kits, highly commended in the Knitting and Crochet Trade Awards in 2020.

As well as a packed store, items are sold through their website, re-designed by local Ivor Rackham, which has proved invaluable during lockdown.

## Transparency needed over closure of walkway

Many people have commented on the closure of the walkway along the quayside and wondered when it might reopen. Loose handrails were cited as the reason for the closure, but over the weeks and months no work has been forthcoming. We wondered why.

Since the summer, The Ambler has been asking many people many questions, not all of whom were effusive in their answers. At one stage we wondered if we should give up. Except, no, and here's why.

In 2014, Northumberland County Council (NCC) and partners were awarded £1.8million by the government's Coastal Communities Fund to construct the Harbour Village. One of the key features of the development proposal, was the construction of a 'public footpath' or walkway along the quayside.

At that time, the walkway land was owned by two groups; half belonged to Amble Boat Company, and half (after a long running legal battle between Warkworth Harbour Commissioners and Northumberland Estates to establish rightful ownership) was declared to belong to Northumberland Estates/Ambler

*The Ambler says: "Where public money has been spent, there needs to be transparency."*



Coble Quay walkway was paid for with public money, but who is responsible for fixing it?

Marina. Amble Boat Company gave NCC their section to create the walkway via a 20-year lease, and a lease for the other section was drawn up.

For some reason the walkway was never officially designated as a public footpath, or permissive footpath. When The Ambler enquired about who was responsible for maintaining the path, we were met with a metaphorical shrug of the shoulders. There appeared to be little appetite by NCC to delve into what the legal or maintenance situation is.

A spokesperson told us:

"NCC understands the concerns raised locally about the closure of this popular walkway. The walkway is not a public Right of Way and has been closed by the landowner, Amble Marina due to safety concerns."

But, sorry, that's not good enough. Where public money has been spent, there needs to be transparency.

So The Ambler is calling on NCC to read their leases, find out who is responsible for fixing the handrails, and do their best to ensure that this 'public footpath' paid for with public money and developed by a public body can hopefully remain open to the public.

Anna Williams

## Harry McQuillen's

## Age of insecurity

We're all going to Build Back Better. There's nothing like a bit of alliteration when you are coining a slogan. I don't blame them in the age of the soundbite. Attention span has been cut to the bone. Wonder how that happened?

We're all environmentalists now in word if not in deed. My environmental footprint is somewhat limited, but even folk like me could cut down on consumption. The conference on global climate change has my blessing. I believe we're the beneficiaries, of about 1% of the world's economy. I'll be interested to see how much clout we have on the global scene.

With apologies for the lack of originality, electric vehicles and their infrastructure, finance,

maintenance and use will feature largely. The affordability of energy in all its forms will be called into question. So many people have so little that they'll need a lot of support as we move into the digital age.

Should we offset our emissions right now or in the future? Everyone who can afford it will have an electric car; that brings more problems, financial and technical. The probability of Wall Street, the city of London, the EU and other financial hubs finding agreement is improbable.

The clear recognition that the world is in a mess and getting messier must give us all pause for thought. Binding targets for decarbonisation will involve all the Big Players. Whether we like it or not,

everybody aims to improve the life we have now. In a country where there are 13 million rented homes we need legislation on affordability.

My unenlightened self-interest will always clash with the self-interest of others. We really need answers to so many questions.

My view is that we'll all have to give and take. Tax hikes are loathed by so many people, even at a time when the rich get richer, the poor fall, often literally, by the wayside. Communication, technology, science, agriculture, medicine. So many incredible people working together, as in our Time of Covid.

I often think back to the 1950's, a time of hope, and great leaps in living standards.

My 20 year old self couldn't imagine my present life, with its affluence and security.

But that was a time when most of the world's population struggled to survive, and life expectancy was so much lower than it is today. Perhaps we just can't have it all. Let's try to answer it, each in our own way.

On a personal front, I've noticed odd lapses of memory, of names, recent events and even where I've put my bloody keys. I wonder if I am losing it, or if it's just a facet of our Covid-enforced modern life.

Once again answers on a postcard please.

Harry



## Could you be a living kidney donor?

We are all aware of the benefits of Blood Donation. Indeed many of us will be active donors. But did you know that there is a need for living kidney donors?

There are currently more than 5,000 people in UK with kidney disease, who are on the National Transplant List.

Hundreds of people in the UK die each year in need of a kidney transplant.

Unfortunately there are not enough kidneys donated from people who have died for everyone who needs a transplant.

A living kidney donor is a person who gives one of their healthy kidneys to someone with kidney failure, who needs a

transplant. This could be a friend or family member, or someone they do not know.

In most cases a kidney donated by a living donor offers the best long-term outcome for the recipient. Studies have shown that the average patient survival at 10 years is 90% with a living donor transplant. This compares to 75% after a deceased donor transplant. These options are both much better than having no transplant at all.

You can find more detailed information on the NHS Blood and Transplantation site <https://www.organdonation.nhs.uk/become-a-living-donor/donating-your-kidney/what-is-living-kidney-donation/>

## Beach wheelchair support needed

We have approached the town council for permission to operate on the beach and house a wheelchair.

We need premises and volunteers to run the operation. We will need to fundraise to get the operation off the ground.

Anyone who wants to support this project, volunteer or has ideas on premises, or fundraising please get in contact by email: [bill.cruickshank91@gmail.com](mailto:bill.cruickshank91@gmail.com)

Bill Cruickshank

## Cash boost provides trainee placement for Wildlife Trust



The South Lake on NWT's East Chevington reserve at Druridge Bay, image Andrew Bryson Photography.

Northumberland Wildlife Trust's Hauxley Wildlife Discovery Centre team has received a grant of £19,670 from the Ventient Sisters North Steads Windfarm Community Benefit Fund at the Community Foundation. This benefit fund allows community groups within a 5km radius of the windfarm to apply for funding of up to £20,000.

The money received will enable the wildlife charity to provide a year-long trainee placement for a young person to work across its five reserves at Druridge Bay - gaining experience with a variety of habitats, developing new skills and earning practical qualifications.

Alex Lister, Druridge Bay Living Landscapes Manager says: "Without this amazing cash boost we wouldn't have been able to offer such a great opportunity to a young person. Our five Druridge Bay reserves are the gems of the Northumberland coastline which the person appointed will help to keep sparkling."

### Sullivan Associates

CHARTERED BUILDING SURVEYORS

Offering professional property advice throughout Northumberland

Building Surveys, Defects Inspections  
Plans drawn for extension and new build  
Planning Applications, Building Regulations Approval  
Disabled Access Advice, Party Wall and Boundary Matters  
Design and Project Management

Tel: 01665 513010

Email: [info@sullivan-associates.co.uk](mailto:info@sullivan-associates.co.uk)

Fourways 2 6 Dilston Terrace Amble Northumberland NE65 0DT



TELEPHONE ORDERS WELCOME

01665 710 442

MONDAY TO SATURDAY: 11.30AM-9.00PM SUNDAYS: 11.30AM-2.30PM

★★★★★ NORTHUMBERLAND COUNTY COUNCIL

1 BROOMHILL STREET AMBLE NORTHUMBERLAND NE65 0AN

## Expertise Wills and Wealth

### PROTECT YOUR FAMILY ASSETS

Long Term Care • Third Party Challenges • Divorce  
Business Failure • Sideways Disinheritance

**LASTING POWER OF ATTORNEY** in areas of  
Property and Affairs • Health and Welfare

Make sure you have them in place while you're fit and healthy

**WILLS** Simple Wills • Trust Wills • Free Reviews

**PROBATE** Call us for Expert Help and Advice

**PENSIONS** Do you have pension pots scattered  
here and there? Now coming up to retirement?  
We're here to help you go through your options.

**A MEMBER OF THE WILL WRITING SOCIETY**

Ring Enid: 07772 182 130 • 01670 855 768  
for a **FREE CONSULTATION** in your home



Email: [enid.eww@sky.com](mailto:enid.eww@sky.com)  
Barrister Intermediary and  
Member of the Legal Services Guild







## The Ambler

Fourways 2  
6 Dilston Terrace  
Northumberland NE65 0DT  
Tel: 01665 712929  
www.theambler.co.uk  
editor@theambler.co.uk

Facebook: TheAmbler  
Twitter: AmbleByTheSea  
YouTube: AnnaAtTheAmbler1



### Editorial Team:

Vivienne Dalgliesh  
Cath Findlay - Chris Herzberg  
Norma Hinson - Ian Mackarill  
Andrew Mounsey - Bartle Rippon  
Editor: Anna Williams

### Thanks to:

Mark Beswick & The Artograffi Crew

### Distribution:

Charlotte, Jeff & Linda,  
Rachel, Lorraine

### Printing:

CBS World, Alnwick

Would you like to join  
The Ambler team? We are a friendly  
group who welcome contributions  
and help from anyone who would  
like to volunteer.

### Thanks to all our contributors, sponsors and advertisers:

NCC Community Chest

Rotary Club of  
Amble and Warkworth

Inner Wheel Club of  
Amble and Warkworth



The Ambler is a proud member of  
the Independent Community News  
Network

The Ambler is a project of  
Amble Development Trust



The Ambler is printed six times per  
year. The views expressed in *The  
Ambler* and *The Ambler Online* are  
not necessarily those of  
the Editorial Team

### 2022 Submissions dates:

#132 - 7 Jan	#135 - 1 Jul
#133 - 1 Mar	#136 - 2 Sep
#134 - 22 Apr	#137 - 4 Nov

## Deeds not words



We end the year with  
thanks - to everyone  
who got us through 2021;  
our healthcare professionals,  
teachers, volunteers, key  
workers, all who are still  
dedicating themselves to  
making our lives better.

Thank you - we may not  
be clapping on doorsteps  
anymore, but we appreciate you  
all. You are the ones who have  
been walking the walk, and  
looking for ways to make our  
community strong.

Unfortunately over the last

few months, there's been an  
increase in the moaners, the  
criticisers, the naysayers. It's  
important to remember it's  
deeds not words that matter.

The Ambler team wish you  
all a happy Christmas, and a  
peaceful and healthy New Year.

## WHAT YOU SAY...

>> more letters on p8

### Garden competition

I have lived in Amble for 20+  
years and look forward to  
the Ambler, a great community  
newspaper.

In the Oct /Nov issue an  
article entitled Garden Awards  
under the Amble Town Council  
section, reads "Previously this  
has been judged in July but  
we have often heard that's too  
soon, the annuals need a little  
longer, so this year it was left  
another month. But all the

councillors felt the standard was  
not as good and it was better  
when done in July"

In my view this statement  
undermined the hard work  
that the folks of Amble, who  
received an award. There was  
no notice of who won, runners  
up or commendations. Is this  
because the councillors thought  
"the standard was not as good."  
There were some new winners  
and runners up this year who

previously never stood a chance,  
as they prefer their gardens to  
bloom a little later.

Thanks to the Alnwick  
Garden judges for their kind  
positive comments, to whoever  
nominated my garden and to  
all the lovely folk of Amble  
who pass by with wonderful  
compliments. This in my view  
is grand community spirit.

"M. Greenhouse"

Via email

### Help needed

A 90-year-old Amble lady  
would greatly appreciate  
some help with her garden,  
fence, and roof / chimney  
stack repair.

Any help you can do  
please contact Chris Scott,  
07702887902.

Chris Scott  
via email



### Not pleased

Where was the Ambler for  
August/September?!!

Hardy's moved from  
Willowburn Estate to the old  
HSBC on the main street in  
Alnwick.

All the money that the  
councillors have could be  
spent on a better NHS.

The main road from  
Amble to Warkworth is like  
a racetrack. The Co-op is  
deserted; so is the main street.  
The best thing about Amble,  
now, is Morrisons.

Yours, not pleased,  
R. Bramham,  
Mariners Court, Amble

Ed: We are aware that some  
people did not get the August  
issue (#129) of the Ambler, and  
we apologise.

### Giving to charities

In response to Hugh Tindale's  
letter regarding allocating funds  
to two charities, I'm all for opinion  
and listening to suggestions and  
read it and re-read it and re-read  
it and still came to the same  
conclusion.

I am utterly disgusted at the  
thought of someone belittling the  
donation of funds to support two  
charities. A charity is dependent  
on the donations it receives and  
as we all (should) know many  
took a massive hit during the  
lockdown. Whether this be a small  
community charity or a nationally  
recognised charity, it should not

matter and morally suggesting the  
improvement to a path would have  
been money better spent. This is  
the world we live in.

What would he prefer? The  
development of a path that can  
already be recommended through  
other channels such as the local  
transport plan programme.  
Maybe Mr Tindale's efforts could  
be put into putting forward his  
suggestions to this forum.  
Well done Councillor Clark for  
recognising the ongoing effort to  
support charities.

Name withheld. Via email

### Well done but more to do

Well done to the  
Northumberland County  
Council workers who, in August,  
strimmed, raked and cleared  
nettles and thistles from the  
pathway linking the Coquet  
Industrial Estate with Percy  
Drive, so enabling residents  
from Priory Park, Tynedale and  
Dandsfield to pass more easily  
along its way once again.

This vital and direct route  
to Morrisons, for both staff  
and customers, as well as other  
businesses and schools, is well  
used on a daily basis.

There now remains the issue  
of flooding. Whenever it rains  
heavily, as it did in early October,  
the path is left completely  
submerged. It was almost

impassable for two consecutive  
days.

Where, apart from a country  
totally lacking in infrastructure,  
would people be expected to  
walk through standing water to  
access work, education and food?

Councillor Clark might well  
favour the Local Transport Plan  
Scheme as a vehicle for deciding  
where improvements should  
be made; but surely the basic  
needs of a great many permanent  
residents should come before the  
superficial traffic management  
requirements of a much smaller  
community, especially when  
you take second home owners  
and holiday makers out of the  
equation.

Hugh Tindle, Priory Park, Amble

## Work begins on car park



Earlier this year the land adjacent to the car park on Turner Street and the car park itself, were purchased by the county council, to develop a new car park, increasing the number of spaces to 134.

Now a disused bungalow on the site has been demolished. Construction of the new car park will start early next year

and is due to be finished by early summer.

The new car park will provide seven disabled parking bays and six electric vehicle bays. Spaces for motorcycles and bikes and an existing cycle route through the area will be changed to take it into account. Drainage, lighting and access to the site will also be improved.

## Training to help victims of domestic abuse

Northumberland Domestic Abuse Service are offering free training for those who would like to be able to offer help or point people to places where they can get help, to victims of domestic abuse. To sign up for the training, which will take around two hours, people should click on the sign up form link: <https://bit.ly/3cbT8cr>

## Lifeboat callout

A request for assistance from Humber Coastguard resulted in Amble RNLI inshore lifeboat being launched. The lifeboat Mildred Holcroft launched at 1.30pm on Saturday 9 October to assist local Coastguard and paramedics who were attending to a casualty on the rocks below Signal Cottage south of Amble.

The casualty had suffered a broken ankle when he fell from the cliff. The coastguard decided

that it was too dangerous to haul him up the cliff or carry him around the slippery rock to safety. The Lifeboat came in as close as possible from the sea and transferred the casualty to the boat. With paramedics aboard the lifeboat they brought him to the lifeboat station and handed him over to the ambulance.

Lifeboat helm Paul Stewart said that the area where the casualty was situated is a particularly hazardous place.

## Amble First School - Governor vacancies

Do you want to help Amble children to grow and develop their learning? Do you want your children to achieve their full potential? Do you want to help shape the future? Then why not come and join us as a governor?

We have upcoming vacancies on the Governing Board at Amble First School. We are looking for people who have some time to spare, an interest in education and who are keen to support their local community.

We are particularly keen to hear from anyone with an interest

in Early Years, Special Educational Needs Provision, or anyone with budgetary/finance experience.

Candidates will need to be committed to the role and prepared to undertake induction, training and a DBS check, as well as being prepared for the nature and level of the work that is involved.

For an informal chat, please contact Head Teacher Lizzie Jackson or Rachel McGarvey, Chair of Governors on 01665 710388 or email: [Enquiries@amblefirst.northumberland.sch.uk](mailto:Enquiries@amblefirst.northumberland.sch.uk)

## Air source heat pump: a personal journey

Exploration of this technology began when our oil storage tank needed to be replaced and due to current regulations, coupled with a small rear garden, meant it would need to be sited virtually in full view of the living room window. We also felt that there was a definite need to move to a new heating system, away from fossil fuels.

The first consideration was to review the insulation. We needed a new front door but the roof insulation was adequate. A quick online search revealed the cost of an Air Source Heat Pump (ASHP) to be about £3000-£4000. However, the associated work is where the major costs are incurred.



What's the cost: to the pocket or to the environment?

To begin with, ASHPs run at lower temperatures when compared with conventional boilers. Nearly all radiators needed to be increased in size to produce comparable heat to the old system. Most of our single radiators were doubled and one became a triple. Furthermore, if the house has micro-bore pipework (8mm diameter) this too may need to be changed.

Because ASHPs do not work as combi boilers, we needed a hot water storage tank. Even if you already have a tank, it will need replacing by one that operates with a bigger heating coil. Consequently, this equipment needed to be housed somewhere. It will not fit into the space left by the old boiler. Taking all this into consideration, if you want an ASHP to work well it is essential that good advice is obtained from a reputable installer.

Under the government's current Renewable Heat Incentive (RHI) scheme we will have around £10,500 returned to us over seven years. This is about two thirds of the installation cost. However, this scheme stops in March 2022 and from next April a grant of £5,000 is to be available to help



Air source heat pumps require external and internal equipment.

make the switch to ASHPs. While this will give money up front, it is less generous and still leaves a large capital outlay that may be out of reach of many.

Our biggest criticism is that there is no source of independent objective help and guidance on the best heating system for your home. It is down to the individual to negotiate with different contractors. This can

mean you might receive a range of confusing facts and data and perhaps unwanted sales pressure. There is no doubt that these factors represent a major challenge, to both households and the government, when it comes to working towards reducing our reliance on fossil fuels.

Ian and Claire MacKarill



## Could you be a Buddy?

Northumberland CVA's Supported Volunteering project supports individuals on the Bridge Northumberland programme, undertaking volunteering opportunities to develop confidence and life experiences to improve the skills needed to find work.

Gordon, one of our buddies said 'After retiring I wanted to give a little back to the community and being a volunteer buddy has allowed me to do this while improving the employment prospects of the volunteers I support. I have seen each and every one of them grow in confidence, until for some they are perfectly capable of working unsupported'. What being a Volunteer Buddy involves;

- Be able to explain things clearly, have empathy and understanding
- Willing to commit to a minimum of half a day per week plus training.
- Undertake a Disclosure and Barring Service check
- Be willing to accompany and possibly transport individuals to placements
- You will be required to advise your insurance company that you are volunteering
- Out of pocket expenses will be paid.

If you would like to find out more please call Lisa on 07818511690 or email [lisa.wackett@northumberlandcva.org.uk](mailto:lisa.wackett@northumberlandcva.org.uk)

## WHAT YOU SAY...



>> continued from p6

### Amble Health Centre: one of most successful in England

There has been comment in The Ambler and other local reports, about the level of patient satisfaction or otherwise with the Amble Health Centre.

For thirty years of my professional life, I frequently dealt with complaints about NHS services; GPs, hospitals and ancillary services.

That there are complaints is inevitable, few people ever make contact to praise provision of a public service.

I have been a registered patient of the Coquet Medical Group in Amble for several years but during the past year have been volunteering there to help with the Covid-19 inoculation programme. This has enabled me to see behind the scenes and to witness surgery staff as patients do not get to see them.

I have seen personally, the level of dedication from the Coquet doctors, nurses and admin support staff, determined to drive through a programme of protection for their patients that has made the Amble centre one of the most successful in England. It has been relentless and high-pressured, processing a huge volume of people in various conditions of personal health. That they were each accorded not only professional competence but human kindness was illuminating to watch and I doubt many could have matched the individual devotion to patient care staff exemplified.

The doctors were remarkably determined and efficient. The nurses incredibly well-organised and capable, all going the extra mile. This could not have

happened without an effective and dedicated administrative team. All of this was boosted by teams of St. John Ambulance personnel and community volunteers, all pulling together for the locality.

Working in medicine is a job like any other, with varying demands and levels of reward, except that getting it wrong can have more vital consequences.

That is a layer of pressure not many have to cope with daily and remorselessly.

My admiration for what they have achieved is considerable. They are a truly remarkable group of healthcare professionals and we are fortunate to have such a facility in our area - please value them a little more.

*Derek Conway TD, Warkworth*

### Thank you for donation

Amble RNLI Fundraisers and volunteer crew would like to thank Councillor Terry Clark for the recent kind donation to our charity's lifeboat station at Amble.

Owing to the effects of the pandemic, it has been another challenging year for the crew and fundraisers, this donation will prove invaluable. We normally hold a monthly coffee morning which raises approximately £500 (sometimes up to a £1,000 at Christmas) and of course our Harbour Day couldn't go ahead for the last two years (each could

raise approximately £10,000). Morrison's in Amble stepped in with an in-store raffle, tombola and entertainment. Local businesses and the community have been supportive but, unfortunately, this is a drop in the ocean to our usual fundraising and, with the shops being closed in early 2020, our collection boxes have been hard hit too.

As you know, the crew are volunteers and are so grateful for donations - not just for the actual monetary support but it helps boost their morale.

The donation will be allocated to Amble Lifeboat Station to go towards the running of our 2 lifeboats; also to the training and costs of the crew. It is essential that the crew, kit and boats are kept fully functional and up to date at all times so that they can respond to their pagers whenever the need arises and continue to save lives at sea.

*Jill Faulconbridge  
Chairman Amble Lifeboat  
Fundraisers*



## The tiger who accidentally stayed for tea



Tiger was well looked after at Radcliffes cafe bar

A lost tiger has been reunited with his family after unexpectedly extending his stay in Amble. Tiger and best friend four-year-old Cody Gleadall, together with their family, spent a wonderful holiday in Amble, returning to Huddersfield at the end of half term.

But Tiger seems to have enjoyed himself so much, he decided to stay a little longer. So when staff at Radcliffes café bar found Tiger all on his own they put out a call on social media to find his owner.

Happily, a couple of days later staff received a phone call from the Gleadall family who were very relieved to hear he

had been rescued. And in the meantime, Tiger enjoyed a lot of hospitality at Radcliffes, and made himself at home.

On their twitter page, Radcliffes café bar owner Mark Aberdeen said: Tiger loved his extended holiday staying at Radcliffe's and said that he was so well looked after... "They even made me a little bed! And the homemade shortbread was delicious!" He loved helping in the kitchen, as you can see, checking they had all the right ingredients in the soup!

"We'll miss you Tiger, but we're glad you're soon to be reunited with Cody!"

*Anna Williams*



A happy ending: Four year old Cody Gleadall and Tiger



## Personalised Christmas Gifts

Make that Christmas gift extra special this year with a personalised gift from Complete Business Supplies.

Christmas Cards  
Canvas Prints  
Fine Art Prints  
Personalised Wrapping Paper  
Photo Calendars  
Photo Cushions  
Personalised Santa Sacks  
2022 Year Planners

We supply to both the public and local business.

Unit 5 Elm Square, Lionheart Enterprise Park, Alnwick NE66 2ES  
Tel: 01665 660022  
www.cbsworld.co.uk

### Did you know we provide:

Minor Ailments Advice, Travel Clinics,  
Stop Smoking Clinics, Period Delay,  
Emergency Contraception & Vaccinations.

### Convenient prescription medication supply:

- **FREE** prescription collection and delivery service.
- We collect prescriptions daily
- Our delivery service covers Amble and surrounding areas

**01665 710 896**

158 Percy St, Amble, Morpeth NE65 0AG



### **HADSTON HOUSE YOUTH CLUB**

Monday, Tuesdays and Thursdays  
Juniors 5pm-6:45pm  
Senior 7pm-8:30pm.

### **COMMUNITY CAFE**

Cafe Opening Times:  
Monday - Friday 9am-2pm  
Saturday - 9am-1:30pm  
Sunday - 11:30am-2pm



### **CHRISTMAS FAYRE AND LIGHT SWITCH ON**

This year we are hosting a Christmas Fayre at Hadston House. There will be loads of Christmas Stalls to bring the festive cheer.

Saturday 20th November  
If you are interested contact us:  
01670 761537 or via our Facebook Page

### **SENIORS CLUBS**

Every week we have multiple clubs on. Mondays we have a Luncheon Club on, this starts at 10:30am-12:30pm. Every Tuesday's we have Exercise Club at 10:30am. On the first Thursday of every month there is a coffee morning hosted at Hadston House. At this coffee morning people find out what trips and activities will be on that month.

### **WEDNESDAY CLUB**

Brand new over 65's club starting in January 2022. Pre registration forms will need to be completed and transport will need to be booked if required. There is plenty of activities and day trips out for both the juniors and senior groups. To find out more information about our latest trips and new activities contact us either by calling 01670 761537 or message us on our facebook page

### **HADSTON HOUSE MEALS ON WHEELS**

Do you know anyone that could benefit from our Meals on Wheels service?  
We deliver meals 6 days a week, freshly cooked everyday.  
5\* Food Hygiene  
£4 for Main course and Dessert  
Deliveries to Warkworth, Amble, Broomhill, Hadston, Red Row, Widdrington and Ulgham

### **THIS YEAR WE SUCCESSFULLY DELIVERED**

**7,245 MEALS!**

### **VOLUNTEERS NEEDED**

Are you looking to help your local community?  
We need: drivers for our minibus, volunteers to help in our clubs and activities, volunteers to help in our kitchen and volunteers to help deliver our meals on wheels and help drive our van!  
If you have any queries please call us on 01670 761537

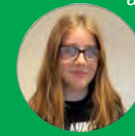
FROM ALL THE STAFF AT HADSTON HOUSE WE WOULD LIKE TO WISH EVERYONE A VERY MERRY CHRISTMAS AND A HAPPY NEW YEAR!



## Cop out at COP26



COP26 is a climate change conference, and it was held in Glasgow this year. It started on 31 October, and ended on 12 November.



**Gas emissions**  
Over 100+ countries

leaders have agreed to try to cut down on their methane emissions; they are also trying to end and reverse deforestation.

If you didn't know, methane is a greenhouse gas. Greenhouse gases help warm up the Earth by not letting heat escape from the atmosphere – they don't actually warm the planet themselves. The people in COP26 wanted to stop all greenhouse gas emissions by 30% in 2030.

Do you like meat? If so, that might not be good, since meat doesn't have a good effect on the environment. It releases greenhouse gases like methane, carbon dioxide AND (emphasis on the and) nitrous oxide. To make this stop, you should try to buy less meat, and farmers should try

to slaughter less animals. Sorry to people who don't eat their greens. **Deforestation**  
If you're wondering how deforestation is being helped I can tell you right now. Sustainable forestry, different ways of farming/ not making farms in the middle of forests and protecting the forests.

By 2030, world leaders promise to end all deforestation, yay! As you know, trees have leaves, which photosynthesize. In that process, the leaves take up carbon dioxide and water, and give out oxygen as a waste gas – the opposite of what animals do. As you know, all animals need oxygen to respire, and all types of forests help give us the oxygen we need. That's why it's important not to cut down trees for the sake of the next generation, and our older selves.

By Grace and Megan



## Will Santa still be socially distanced this year?



As Wham once said, last Christmas really wasn't that great. People from different households weren't allowed to mix in some areas and people weren't allowed to travel. The rise in covid cases meant that many people were at risk, so Christmas wasn't what most people were used to and what we all needed- after so long isolating many were looking forward to seeing their family but couldn't. It seemed to be the exact opposite of what we wanted, but was it as bad as it seemed?

There was a lot less door-to-door carols last year and a lot more socially-distanced-Santa, with families having to meet up via zoom instead of in a living room, but there was something quite nice about the whole country being connected- both online and by the shared experience of having a Christmas like no other. Most of us still had food and presents, plus Mariah Carey got to number 1 for the first time so everything seemed pretty perfect. Except, as we all learned from the Grinch, Christmas isn't all about food, decorations and presents, and for a lot of people not seeing their families at Christmas would've severely

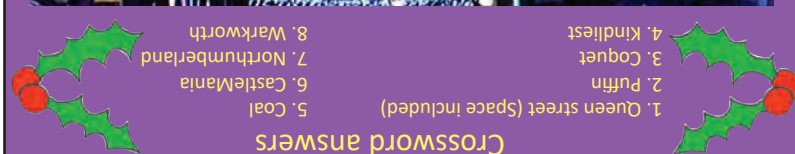
affected their mental health. After a year of barely leaving the house at all, not being able to see family and friends at Christmas would've been devastating. People need social interaction and, for those who were completely alone for months, zoom calls just don't cut it.

This Christmas, we've been told everything will be back to normal, but the fact we were told the same thing last year isn't very reassuring. It would be detrimental to so many people to have to spend

the festive season alone, but if the alternative is spreading the virus and ending up back in months of lockdown then I think we'd all be on the side of saving lives.  
By Lily



## HAVE A VERY MERRY CHRISTMAS FROM THE ARTOGRAFFI CREW



## Terrible jokes sorry, not sorry



What do you call a cow who studies ocean life?  
A moo-rine biologist!

What do elves learn at school?  
The ELFabet!

Who hides in a bakery at Christmas?  
A mince spy!



What do eggs drink at Christmas?  
Eggnog!

## How to have an environmental Christmas



Everyone knows Christmas is the most commercial time of year, so how do you reduce your waste? It's very difficult to stay sustainable in a time where the expectation is new, new, new.

Here's a few things you can do to make your Christmas period more sustainable.

1) Instead of getting a new tree year after year, consider renting a tree over Christmas. Or, like my family, buy a plastic tree that can last 20+ years.

2) Use recycled paper or fabric to wrap your presents, as this can be reused. Also, use less

or no tape- you could instead learn some fun origami to wrap the presents in, or use blutack.

3) Consider not sending Christmas cards- a text would do, or, as my family does, donate the money you would spend to a charity that needs it this Christmas.

4) You could buy eco-friendly crackers, or create your own to avoid waste. Templates are easily available online, and it means you can give personalised gifts that aren't going to end up immediately in the bin.

5) Food waste is a huge issue, so you could try to plan your meals and not overspend on

unnecessary food. Also, when possible, buy from local or sustainable places to reduce your carbon footprint.

6) Don't always have your lights on- when you're not in the house or don't need the extra decoration turn your lights off and you will save a lot of electricity.

7) And when it's all over, compost, reuse and recycle.

Even if you aren't able to make your Christmas environmental, I hope you enjoy it :)  
By Ava



What do elves learn at school?  
The ELFabet!

Who hides in a bakery at Christmas?  
A mince spy!



What do eggs drink at Christmas?  
Eggnog!

What do elves learn at school?  
The ELFabet!

Who hides in a bakery at Christmas?  
A mince spy!



What do eggs drink at Christmas?  
Eggnog!

What do elves learn at school?  
The ELFabet!

Who hides in a bakery at Christmas?  
A mince spy!



What do eggs drink at Christmas?  
Eggnog!

What do elves learn at school?  
The ELFabet!

Who hides in a bakery at Christmas?  
A mince spy!



What do eggs drink at Christmas?  
Eggnog!

What do elves learn at school?  
The ELFabet!

Who hides in a bakery at Christmas?  
A mince spy!



What do eggs drink at Christmas?  
Eggnog!

What do elves learn at school?  
The ELFabet!

Who hides in a bakery at Christmas?  
A mince spy!



What do eggs drink at Christmas?  
Eggnog!

What do elves learn at school?  
The ELFabet!

Who hides in a bakery at Christmas?  
A mince spy!



What do eggs drink at Christmas?  
Eggnog!

What do elves learn at school?  
The ELFabet!

Who hides in a bakery at Christmas?  
A mince spy!



What do eggs drink at Christmas?  
Eggnog!

What do elves learn at school?  
The ELFabet!

Who hides in a bakery at Christmas?  
A mince spy!



What do eggs drink at Christmas?  
Eggnog!

What do elves learn at school?  
The ELFabet!

Who hides in a bakery at Christmas?  
A mince spy!



What do eggs drink at Christmas?  
Eggnog!

What do elves learn at school?  
The ELFabet!

Who hides in a bakery at Christmas?  
A mince spy!



What do eggs drink at Christmas?  
Eggnog!

What do elves learn at school?  
The ELFabet!

Who hides in a bakery at Christmas?  
A mince spy!



What do eggs drink at Christmas?  
Eggnog!

What do elves learn at school?  
The ELFabet!

Who hides in a bakery at Christmas?  
A mince spy!



What do eggs drink at Christmas?  
Eggnog!

What do elves learn at school?  
The ELFabet!

Who hides in a bakery at Christmas?  
A mince spy!



What do eggs drink at Christmas?  
Eggnog!

What do elves learn at school?  
The ELFabet!

Who hides in a bakery at Christmas?  
A mince spy!



What do eggs drink at Christmas?  
Eggnog!

What do elves learn at school?  
The ELFabet!

Who hides in a bakery at Christmas?  
A mince spy!



What do eggs drink at Christmas?  
Eggnog!

What do elves learn at school?  
The ELFabet!

Who hides in a bakery at Christmas?  
A mince spy!



What do eggs drink at Christmas?  
Eggnog!

What do elves learn at school?  
The ELFabet!

Who hides in a bakery at Christmas?  
A mince spy!



What do eggs drink at Christmas?  
Eggnog!

What do elves learn at school?  
The ELFabet!

Who hides in a bakery at Christmas?  
A mince spy!



What do eggs drink at Christmas?  
Eggnog!

What do elves learn at school?  
The ELFabet!

Who hides in a bakery at Christmas?  
A mince spy!



What do eggs drink at Christmas?  
Eggnog!

What do elves learn at school?  
The ELFabet!

Who hides in a bakery at Christmas?  
A mince spy!



What do eggs drink at Christmas?  
Eggnog!

What do elves learn at school?  
The ELFabet!

Who hides in a bakery at Christmas?  
A mince spy!



What do eggs drink at Christmas?  
Eggnog!

What do elves learn at school?  
The ELFabet!

Who hides in a bakery at Christmas?  
A mince spy!



What do eggs drink at Christmas?  
Eggnog!

What do elves learn at school?  
The ELFabet!

Who hides in a bakery at Christmas?  
A mince spy!



What do eggs drink at Christmas?  
Eggnog!

What do elves learn at school?  
The ELFabet!

Who hides in a bakery at Christmas?  
A mince spy!



What do eggs drink at Christmas?  
Eggnog!

What do elves learn at school?  
The ELFabet!

Who hides in a bakery at Christmas?  
A mince spy!



What do eggs drink at Christmas?  
Eggnog!

What do elves learn at school?  
The ELFabet!

Who hides in a bakery at Christmas?  
A mince spy!



What do eggs drink at Christmas?  
Eggnog!

What do elves learn at school?  
The ELFabet!

Who hides in a bakery at Christmas?  
A mince spy!



What do eggs drink at Christmas?  
Eggnog!

What do elves learn at school?  
The ELFabet!

Who hides in a bakery at Christmas?  
A mince spy!



What do eggs drink at Christmas?  
Eggnog!

What do elves learn at school?  
The ELFabet!

Who hides in a bakery at Christmas?  
A mince spy!



What do eggs drink at Christmas?  
Eggnog!

What do elves learn at school?  
The ELFabet!

Who hides in a bakery at Christmas?  
A mince spy!



What do eggs drink at Christmas?  
Eggnog!

What do elves learn at school?  
The ELFabet!

Who hides in a bakery at Christmas?  
A mince spy!



What do eggs drink at Christmas?  
Eggnog!

What do elves learn at school?  
The ELFabet!

Who hides in a bakery at Christmas?  
A mince spy!



What do eggs drink at Christmas?  
Eggnog!

What do elves learn at school?  
The ELFabet!

Who hides in a bakery at Christmas?  
A mince spy!



What do eggs drink at Christmas?  
Eggnog!

What do elves learn at school?  
The ELFabet!

Who hides in a bakery at Christmas?  
A mince spy!



What do eggs drink at Christmas?  
Eggnog!

What do elves learn at school?  
The ELFabet!

Who hides in a bakery at Christmas?  
A mince spy!



What do eggs drink at Christmas?  
Eggnog!

What do elves learn at school?  
The ELFabet!

Who hides in a bakery at Christmas?  
A mince spy!



What do eggs drink at Christmas?  
Eggnog!

What do elves learn at school?  
The ELFabet!

Who hides in a bakery at Christmas?  
A mince spy!



What do eggs drink at Christmas?  
Eggnog!

What do elves learn at school?  
The ELFabet!

Who hides in a bakery at Christmas?  
A mince spy!



What do eggs drink at Christmas?  
Eggnog!

What do elves learn at school?  
The ELFabet!

Who hides in a bakery at Christmas?  
A mince spy!



What do eggs drink at Christmas?  
Eggnog!

What do elves learn at school?  
The ELFabet!

Who hides in a bakery at Christmas?  
A mince spy!



What do eggs drink at Christmas?  
Eggnog!

What do elves learn at school?  
The ELFabet!

Who hides in a bakery at Christmas?  
A mince spy!



What do eggs drink at Christmas?  
Eggnog!

What do elves learn at school?  
The ELFabet!

Who hides in a bakery at Christmas?  
A mince spy!



What do eggs drink at Christmas?  
Eggnog!

What do elves learn at school?  
The ELFabet!

Who hides in a bakery at Christmas?  
A mince spy!



What do eggs drink at Christmas?  
Eggnog!

What do elves learn at school?  
The ELFabet!

Who hides in a bakery at Christmas?  
A mince spy!



What do eggs drink at Christmas?  
Eggnog!

What do elves learn at school?  
The ELFabet!

Who hides in a bakery at Christmas?  
A mince spy!



What do eggs drink at Christmas?  
Eggnog!

What do elves learn at school?  
The ELFabet!

Who hides in a bakery at Christmas?  
A mince spy!



What do eggs drink at Christmas?  
Eggnog!

What do elves learn at school?  
The ELFabet!

Who hides in a bakery at Christmas?  
A mince spy!



What do eggs drink at Christmas?  
Eggnog!

What do elves learn at school?  
The ELFabet!

Who hides in a bakery at Christmas?  
A mince spy!

</



*Celebrate with us the timeless  
message of love & hope.*

**HARBOUR LIGHTS CHURCH  
CHRISTMAS CAROL SERVICE  
SUNDAY 19 DECEMBER  
10:30AM  
THE RADCLIFFE CLUB  
CHARLES ROAD  
AMBLE NE65 0RA**

*Visit the Special Christmas pages on our website,  
including fun videos and activities for children.*

**harbourlightschurch.com**

**Would you like prayer?  
Call our Prayerline:  
07368 459411**



**WILLIAM  
PURVES** EST. 1888  
FUNERAL DIRECTORS  
INCORPORATING ALISTAIR TURNER

**NEW NAME, SAME TEAM,  
SAME PROMISE**

*Alistair Turner branches in Alnwick, Amble  
and Rothbury have changed name to  
William Purves Funeral Directors.*

*The same team continue to deliver compassion dedication  
integrity and respect 24/7 every day of the year.*

*Funeral arranging, free plans of wishes, prepayment plans,  
memorials, and bereavement aftercare.*

Alnwick  
01665 510 699

Amble  
01665 712 227

Rothbury  
01669 631 166

[williampurves.co.uk](http://williampurves.co.uk)



**MOCHA  
MONDO**  
COFFEE

PROUDLY  
PRODUCED IN  
NORTHUMBERLAND

# CALLING ALL BUSINESSES

CALLING ALL BUSINESSES | CALLING ALL BUSINESSES | CALLING ALL BUSINESSES

We're here to help! If you're looking  
for ways to help boost business, being  
able to offer a coffee takeaway service  
might be the answer.

We offer coffee machines for lease or purchase so you can be flexible  
with your commitment. If you'd like more information, please get in touch!  
[mochamondo.co.uk](http://mochamondo.co.uk) Unit 6C, Coquet Enterprise Park Amble, NE65 0PE



COMES WITH  
**HALF PRICE  
COFFEE  
FOR LIFE**

T&Cs apply

CALLING ALL BUSINESSES



## Thanks to the community from Amble Food Bank

Amble Food Bank wish to thank all those who donated to the following Harvest Festivals and chose Amble Food Bank as their chosen charity: St Cuthbert's and Hauxley Chapel; Amble Links First School, Amble First School and Broomhill First School.

We would like to thank St Marks URC for giving us a home over the past years. Our recent move to Trinity Methodist Church, Percy Street, went smoothly. Thanks to N&F Young for the cages that they kindly donated and which have been a great help.

The Co-op donation tins have raised £470.47 since December 2020. Thanks for all donations and to the Co-op for providing these on their premises.

We had a very proud moment when Amble Food Bank recently achieved charity status. So we are now officially registered as a charity which we hope will help further our cause.

As part of the Co-op Local Community Fund, Amble Food Bank was chosen as one of the local causes members could support for the coming year.



Members can select Amble Food Bank as their chosen local cause and when they buy selected Co-op products and services, 2p of every £1 spent goes into their membership account, the Co-op then gives the same amount.

We will get our first grant in the spring and we would like to provide nutritious packed lunches through the holidays to children who are usually in receipt of free school meals.

Thanks to the local communities for their continuing support. If people wish to donate to the Food Bank, they can either put it in an envelope and post it through the letter box at Trinity Church, or do a bank transfer to Amble Food Bank, sort code 77-20-04, account number 17925260.

You can apply for a referral

for a food parcel through an agency such as CAB or NETs, GPs, Social Workers, Health Visitors and Churches or by contacting Northumberland Communities Together, on 01670 620015, 9-6pm, seven days a week.

Amble Food Bank have a Facebook page and can be contacted by email on [amblefoodbank@aol.com](mailto:amblefoodbank@aol.com)

Thank you also to the volunteers, who work tirelessly to ensure the food donated is collected, sorted, packed, and delivered in a timely manner; not forgetting the people taking the time to refer families in need.

Wishing all the best of Christmas and for a better New Year to come.

*Amble Food Bank Team*

## Sparks fly, as Santa's beard and Willie Woodbine clash!

The following is a true story from Links Avenue in the late 1950s.

Opposite our home lived a lovely couple, Ted and Bet Stanley, who were childless. Ted had lost an arm and had a false one. The hand was covered by a brown leather glove. At Christmas they used to store neighbours presents for the kids in their home. Just after midnight Christmas Day, Ted would dress as Santa and deliver to the Links Avenue kids. Sadly his one gloved false hand never fooled me.

On one of Santa's visits, my Dad gave him a Woodbine cigarette as he left. Ted's face had a dressing on it on Christmas Day. Santa had set his beard alight. He'd been patched up, a new beard quickly found and Santa had bravely carried on with his home visits. It must have helped Santa bear the pain, that he'd had a refreshing drink in every house, although the drink may have contributed to the accident in the first place.

You could not make it up, could you? A one-armed, Geordie-speaking, tipsy, Woodbine-smoking, Santa with his beard on fire!

*Tom Curry*

*Extract from Tom Curry's book 'Wor Tomis the Polis'. Available from Lumiere Pod in Amble Harbour Village and N&F Young on Queen St*



**HAUXLEY  
PARISH  
COUNCIL**

**Neighbourhood Plan update:** The Parish Council has been successful in obtaining a design code technical package which will be administered independently by AECOM. Design codes are a set of illustrated design requirements that provide specific, detailed parameters for any future physical development of a site or area.

**New Councillor:** Low Hauxley resident Jim Busby has been co-opted onto the Parish

Council to fill the vacant seat, bringing Council back to a full complement of Councillors. Jim has experience of being a Councillor in the past when he lived in the Yorkshire Dales.

**Christmas Trees:** The Parish Council has provided two Christmas trees to be located in High Hauxley and Low Hauxley to bring some festive cheer to the community. We wish all our residents the best seasonal wishes.

**Vacancy – Parish Clerk:** We are still looking to recruit a Parish Clerk and Responsible Financial Officer to join Hauxley Parish Council. The vacancy is for 12 hours per month and the training course 'Introduction to Local Councils' will be provided to the successful candidate. If you are interested in the job, please email [hauxleypc@gmail.com](mailto:hauxleypc@gmail.com) for an application form and further details.

**Future meetings:** The next meeting of the Parish Council will be held at 6.30pm on Mon 10th Jan 2022 at Hauxley Village Hall. All in attendance are requested to adhere to social distancing.



Parish Clerk: Elaine Brown Tel: 07588 659 600 Email: [hauxleypc@gmail.com](mailto:hauxleypc@gmail.com)  
Website: <https://northumberlandparishes.uk/hauxley>



**AIM North East**

Achieving success together; Inspiring individuals; Motivating communities

## Are you aged 16-24?

AIM North East can help, we focus on young people aged 16-24, not in education, employment, or training. To us, you're more than a number and everything we do is to help you find your own path and move forward in life.

## What do we offer?

**We offer a FREE Funded, bespoke 52 week support Programme:**

- Realistic career information advice and guidance
- Training and courses, including CSCS, Health and Safety and Childcare.
- Meaningful work experience as part of our 'Day in the Life' scheme
- Emotional well-being support inc. access to talking therapies and physical fitness classes.
- Housing and finance advice
- CV creation, support with applications
- Interview preparation including clothing and travel
- Regular contact and support throughout your journey

**Find us on Facebook and Instagram to keep update and feel free to message us about and queries.**

**Or contact us via emailing [aimnortheast@gmail.com](mailto:aimnortheast@gmail.com)**





## Reports from our *County Councillors*



I know many of you are getting concerned about the ever-increasing numbers of houses being used as holiday lets in Amble. I've been talking to the County Council about this, and it will be no surprise that it is a complex issue.

The first point is that planning permission is not required to change a house into a holiday-let or a second home. Therefore, there is nothing that can be done through the planning system as it currently operates to restrict how existing housing is used or occupied. The only issue the County Council can really look at is in relation to new houses. If there is the evidence to justify it, they can restrict the occupation of new houses so that they are only used as permanent homes.

The new Local Plan for the entire County enables this type of restriction to be put in place, but its only reasonable to do this where there is clear evidence about the amount of second homes and holiday-lets in an area. The Council can then look to see if this is causing problems to the local community.

Another way of introducing this policy can be by a local community and the Town Council creating a Neighbourhood Plan. A number of new neighbourhood plans along the Northumberland Coast include policies which restrict the occupancy of new homes.

The County Council is doing more research on the issue of holiday and

second homes. The new Local Plan proposes to require all new dwellings to be occupied only as a 'principal residence' in parishes across the county where, according to the latest Census, at least 20% of the housing stock is not being used as someone's main home. While the findings of the 2021 Census are awaited, in the 2011 Census the parish of Amble had only 4.6% of the housing stock falling into this category. This figure has certainly increased since 2011, but until the new figures are available we will not know if Amble will be one of the locations in Northumberland where restrictions can be imposed.

Any residents who receive literature posted from the right wing organisation Patriotic Alternative, an extreme right wing party run by former BNP members who spread their Neo Nazi hate theory and conspiracy lies, please contact the Police and pass on any information. This is a vile organisation spreading hate and fear, don't allow it to spread its lies in Amble.

Percy Drive LTP Programme for construction (2022/23). Safety crossing points, either a refuge or zebra crossing option will be decided at the appropriate location helping pedestrians cross safely and keeping our neighbourhood a friendly place to walk. Merry Christmas to all.  
*Cllr Terry Clark Amble, Hauxley, North Broomhill.*

Terry.Clark@northumberland.gov.uk  
07779 983768.

There have been some questions re the proposed trial of six Campervan places on the hard standing on the Braid. The application is currently with planning. The proposed site will be controlled, charged for, for one-night stays only and for those vehicles which have on board facilities. The site will only be bookable by digital means and will have registration numbers registered to prevent misuse. Both Warkworth P.C. and Amble Town Council supported this application at an early planning stage.

I am arranging for a speed indicator sign at the entrance to Amble from Rotary way to encourage motorists to slow down approaching the Town, these signs have been helpful at other locations in Northumberland.

I am pleased to see that work is underway at the Turner Street car park (at last!) and I understand it will be ready for use in the late Spring, it will have six electric charging points as well as some disabled parking bays. I am insisting that the facility is free of charge for at least an hour.

The new Harbour Commissioners building is nearing completion and is expected to be occupied before Christmas, it will have four retail units.

I hope you all have a good covid free and enjoyable Christmas and are looking forward to a better New Year than the difficult one we have just had.

With best wishes

*Jeff Watson*

07802385367

Jeffrey.watson@northumberland.gov.uk

A huge thank you to everyone who has supported over the past year.

Together we have made a real difference within the community and within peoples lives.

Merry Christmas  
and a  
Happy New Year

Best Wishes

*Scott Dickinson*

Member for Druridge Bay &  
Northumberland Labour Group  
Leader



**NORTHUMBERLAND**  
**Labour**

**Putting  
Local  
People  
First**

*Season's Greetings*

to all  
from

**Northumberland Conservatives**



*Leader Glen Sanderson  
and local councillor Jeff Watson  
wish everyone*

*a Peaceful Christmas and  
a Happy New Year*







Welcome back to Trust Life and your Christmas edition of The Ambler.

By the time you read this, hopefully we have had the Lights Festival, in all its glory. We hope it was enjoyable. The occasion was organised then reorganised by the Events Committee volunteers and Dry Water Arts. Due to the possibility of new Covid restrictions being enforced, the group took the decision to arrange activities in an area that allowed for greater social distancing. Plus a different location allowed new ideas to be introduced.

Now to the few who have moaned on social media about it being a shame that local businesses would miss out and those who make decisions not consulting the community, I say: rather than denigrate those who volunteer their time and efforts to doing something for the community, come and join us, roll your sleeves up and see what is involved. Everyone is

welcome, but know there are responsibilities involved. This small group of volunteers have to arrange the event, raise funds for insurance, first aid, security, stewarding and licenses. This as well as fitting in with their day jobs. So if you feel aggrieved, do something about it and help. You will find constructive comments are appreciated!

## The Welfare

At the Welfare we have two teams using the pitches and pavilion which is great news. However sadly one of the new basketball nets has been vandalized. It is obvious that someone decided to swing from them – well done that person, although I doubt you are reading this column. But once we have the CCTV footage the repair bill will be in the post!

The rubber crumb base in the children's play area is also

in need of repair. We have been doing small repairs for some time, but now the surface is in need of more major work. We have materials on order but will be looking for funding to repair the whole surface once we have

received quotes for the work. We really don't want to close this area off so please bear with us.

## Orchard

We are also planning a community orchard in the Welfare. We have some fruit trees on order, only a few but we wanted to make a start. These should be with us by the end of November ready to plant.

We also have 120 trees to plant through the County Council /Governments Climate Change project.

If anyone would like to get involved with planting or developing a community

orchard, email Andrew Gooding: [andrew@ambledevelopmenttrust.org](mailto:andrew@ambledevelopmenttrust.org)

## Bird Sculpture Trail

On the bird sculpture trail – some progress has been made. We have planning for one sculpture and the others are now being consulted upon. Hopefully we will have some positive news soon and make a long awaited start on getting everything installed.

Trustees have now agreed to open the job search facilities from 9.30 – 11.30 each week day. Currently if you want to contact The Ambler, or require a CV you can do so by ringing 01665 712929 or emailing [editor@theambler.co.uk](mailto:editor@theambler.co.uk) or [Julie@ambledevelopmenttrust.org.uk](mailto:Julie@ambledevelopmenttrust.org.uk)

And on that note we wish you a very merry Christmas and a happy, prosperous new year.

*Julia and all trust staff and trustees.*

## Amble and District Education Association

We had some great talks for our first post Brexit courses in October, with Peter Regan, member Ian Baulch Jones, and Graeme Young of the Bamburgh Archaeology Project, educating us with a variety of fascinating subjects.

Our Spring Term starts on Wed February 2, 2022 with members Ian Baulch Jones, Richard Booth, Geoff Holder and Alan Jones, all of whom so ably led our Zoom programme during the lockdown days. Each will present one session on their chosen subject areas.

We will follow this with four sessions in March 2022, presented by the Hauxley Nature Reserve Team, who will guide us into springtime and further appreciation of the flora and fauna of this important neighbourhood reserve. Hopefully we will, in addition, include a site visit!

You are most welcome to come along to our new venue The Masonic Hall, Amble for a taster session on Wednesday February 2, 2022 at 10:00 until 12:00 a.m.

You can find out more by visiting <https://ambledistricted.uk> or contacting [terryvickers8@hotmail.com](mailto:terryvickers8@hotmail.com) mob: 07401978418



## Funeralcare

Our caring staff are here to listen and advise you, 24 hours a day, 7 days a week



Coquetdale Cottage, Queen Street, Amble  
Tel: 01665 710437

## Lionheart Cleaning

Commercial & Domestic Cleaning Services

### Your One Stop Cleaning Service Provider

Our ever expanding teams of fully trained and insured operatives are insured and able to carry out all of the following aspects of Domestic and Commercial cleaning for you, or your business.

Carpets and upholstery	Conservatory Roofs	Pressure washing
Windows	Commercial Kitchens	End of Tenancy
Gutters/Fascias		Post Build
		General

01665 713448 [www.lionheartcleaning.co.uk](http://www.lionheartcleaning.co.uk)





# Amble Town COUNCIL

All meetings at 6pm - details on our website

Town: 9th Dec, 13th Jan, 6pm check website for venue

Amenities: 27th Jan. 6pm Council Offices

<b>EAST WARD:</b>	Helen Lewis, Ian Parks, 33 Warkworth Avenue, Warkworth. NE65 0TP	Craig Weir (Chair/Mayor) 76 Priory Park, Amble NE65 0PH 07751 229 739 NE65 0HY 01665 712342	<b>WEST WARD:</b>	Jeff Watson 14 Magdalene Fields Warkworth NE65 0UF 07802 385367	David Bewley 11 Brinkburn Place Amble NE65 0BJ 07525713086	<b>CEN. WARD:</b>	Jane Dargue Kate Morrison, 3 Island View, Amble NE65 0SE 01665 711191	Jane Dargue 10 Sylvia's Close, Amble NE65 0GB 07795360513	<b>BEST WISHES TO ALL FOR THE FESTIVE SEASON AND YEAR AHEAD</b>
-------------------	---	--	-------------------	--	---	-------------------	--	--	---

## TREES

The delivery from the Woodland Trust has been delayed but we hope to have the 420 'whips' soon and with the help of local schools pupils, Amble Youth Project and community volunteers these should be planted by the end of the year. As well as the West Cemetery we hope to fill some of the places on Percy Drive where trees were lost from the Jubilee planting and there may be enough for other areas.

Sadly despite following the horticultural advice, both the Nordmann Fir trees bought for the town did not 'take.' However we felt that living trees were what the town should have and so we have planted two new ones. They have been staked to protect them from the wind for at least the next six months. These Abies Concolor, have a silvery blue hue to them, are not as large but can grow to 4 metres within 10 years and should be sustainable for generations to come.

## BUDGET

Council is beginning to formulate their budget for the financial year, 2022-2023, as this has to be notified to NCC by January 2022 so they can calculate it into the Council tax. It is easy to note where areas are increasing in cost- such as utilities- but so much harder to foresee areas where funds could be needed before March 2023! Just like prudent households, this Council tries its best to put funds aside each year for things which will need to be done but could be expensive if not saved for but there still needs to be money set aside for unexpected emergencies. It is hoped that in these difficult financial times, that any increase can be kept to a minimum.

## WEST CEMETERY

New signage has been erected to remind visitors to the cemetery of regulations which should be observed to keep the area fit for purpose. Please be respectful and considerate of others at all times. A reminder- the water is now turned off until April. The water butt is in place but please, please remember to place your container in the bins or take it away. Unfortunately many do not do so feeling they are helping others who may not have one but in reality, these are left to blow into the flower and shrub beds or onto graves, not only leaving the area looking untidy but also upsetting those whose family graves they appear upon.

## COUNCILLOR'S CORNER

I've often wondered how people fall for it, but on Friday I was alerted to a message from a friend saying "this is you in the video?" It was a person I have communicated with so thought nothing of it. Even when the Facebook login page appeared, I just thought it was behind a login wall so logged into Facebook. At that point, the messages started coming from friends saying had I sent them a video? No I hadn't, but the HACKERS had. Straight away I did all the things which you are told; changed passwords for Facebook and my email, contacted the fraud line at my bank etc. I'm telling this tale because I am IT savvy, having taught lessons to children about e-safety; I should know what not to do. I now know not to be distracted whilst online. Do not allow yourself to be drawn in. Always check before you open something. If it asks you to login to another site, don't do it, even if it seems innocent. Be alert- Be aware! *Cllr Ian Parks*

## HIGHWAY SIGNAGE

There has been an increase in complaints about speeding throughout the town. We urge everyone to report these incidents to Northumbria Police requesting an incident number. If speeding does not result in an accident then it is only after a significant number of reports that police can initiate extra coverage to try and target areas of concern. Council has requested more speed notification on central roads- either on the surface or posts alongside. Requests can be made for speed calming measures but these have strict criteria to satisfy and also generally need a majority agreement from the street's residents; however it often seems that chicanes and speed bumps are not welcomed by all! Northumbria Police, our County Councillors, this Council and some businesses have worked together to provide cameras and speed flashing signs at the town entrances to encourage slower speeds. There are also a number of 'tourist' signs which are overdue for replacement e.g. directions to a Tourist Information Centre, and it is hoped that this will coincide with much better directional signs to the Car Park facilities in the town and so help to alleviate some congestion on our residential streets nearer the town centre and harbour area.

## SEATS

Winter maintenance work and refurbishment has started on the town seats. The wooden slats on the older seats will be replaced with polyboard- recycled plastic- so they look good and last for many years to come. Another seat has been donated for Paddlers Park and should be in place soon. We are most grateful. There are now few remaining locations for new seats, Council has introduced a policy where, for a fee, memorial plaques can be placed onto established seats.

## EAST CEMETERY

Please be aware that the knob of the gate here can appear to be very stiff to turn. It is being oiled regularly but by a strange quirk it actually works in an anti- clockwise way! Due to attempts to try and open the gates wrongly, the metal 'stay' for the gates has cracked and, whilst it poses no danger, it will require attention. It is hoped it can be repaired and then the gates can be painted in the spring.

## TREE PRESERVATION ORDERS

Aware that Amble Parish has few of these, Council have submitted a list to NCC of others for consideration- such as the one at the top of Links Avenue. However NCC policy is now to only check these if they are in any danger of work or removal before making a decision. We have therefore decided to keep resubmitting the list each year so it remains fresh in their minds.

## CHRISTMAS RECEPTION

After a break last year, the reception will go ahead this year. Council welcome the opportunity to thank volunteers who give so much of their time to help others in our community- whether individually or as part of a group. We are very fortunate to have so many people willing to devote time from their own needs and pursuits to help others. Do you have a skill or experience which could be useful? Do you have some free time you could give? Would you like to spend time with others? Look around and you will surely find you are needed by someone or some group to assist them.

TOWN COUNCIL OFFICES, FOURWAYS 2, AMBLE. NE65 0DT Tel: 01665 714 695 [www.amble.gov.uk](http://www.amble.gov.uk)

Email [ask@amble.gov.uk](mailto:ask@amble.gov.uk) Twitter: @AmbleTC Facebook: [www.facebook.com/AmbleTownCouncil](http://www.facebook.com/AmbleTownCouncil)

Office hours: 10.30am-12noon & 1.30-3p.m. Monday to Friday Vicki Smith, Town Clerk Minutes available to view in Office or online



## Light up a Life 2021

Join Hospicecare from the comfort of your own home to light a candle and have a shared moment of reflection to celebrate the life of loved-ones and to honour their memories. Join us on Facebook at 5.45pm on 6 December when we will be posting a short video of reflective thoughts and poems culminating in the lighting of our candles at 6pm. See more: [www.hospicecare-nn.org.uk](http://www.hospicecare-nn.org.uk)

## If U Care Share Charity

A charity set up to help those affected by suicide is reaching out to people in the area. "If U Care Share Foundation" is open for referrals throughout the region. Their aim is to provide practical and emotional support at a critical time - by working with local and national agencies, to provide the support needed to those affected by suicide. The Foundation's three main objectives are suicide prevention, intervention and support for those touched by suicide.

To get in touch, ring 0191 387 5661, or see [www.ifucareshare.co.uk](http://www.ifucareshare.co.uk).

## Larks and Magic

Our next "Highlights" production is a one-woman show called "Larks and Magic", which explores the colourful life of the Victorian author, E. Nesbit. Credited as the first modern writer for children, Nesbit's books include "The Railway Children" and "Five Children and It". Alison Neil's play, tells the fascinating story of Nesbit's struggle to keep her unconventional family afloat, lifts the lid on her scandalous private life and provides a dazzling glimpse into a tempestuous, brilliant and extraordinary life. The show takes place in the Parish Hall on Friday 10 December at 7:30 pm. Tickets from N&F Young on Queen St, or online at [www.highlightsnorth.co.uk](http://www.highlightsnorth.co.uk).

Adult £10 | Concessions £8 | Child £5 | Special Offer: 16-35 year old £10 for 2 tickets. There will be a licensed bar and a raffle.

## Activities for young people

*Some activities may not have resumed post lockdown. Please check with organisers*

### Monday

- After School Club homework help & activities, 8-13yrs 3.30-5.30pm Amble Youth Project, Dilston Terr: 01665 713741. <https://www.ambleyouthproject.org/> Free.

- Body exercise circuits, 5.30-6.30pm Sports Development Centre, Percy Drive. Contact John: [johnkellyx@aol.com](mailto:johnkellyx@aol.com) £2.
- Artograffiti, young journalists activity, writing, photography, 9-18yrs 5-6.30pm, Amble Development Trust, Fourways2, Contact Anna: 01665 712929. Free

- Rainbows, Brownies, Guides, at Warkworth, Contact [www.girlguiding.org.uk/information-for-parents/register-your-daughter/](http://www.girlguiding.org.uk/information-for-parents/register-your-daughter/)
- Army Cadet Force, 12-18yrs, 6.45-9pm, Army Reserve Centre, Scott St. Contact: <https://armycadets.com/> £20.00 enrol fee

### Tuesday

- Kids' Kickboxing, Martial Arts, 6-10yrs 5pm, 11-15yrs

6pm Sports Development Centre, Percy Drive. Contact Adam: 07545485955. [www.facebook.com/teamHKBA/](https://www.facebook.com/teamHKBA/)

### Wednesday

- After School Club, homework help & activities, (see Monday)
- Bag work & circuits 5.30-6.30pm Sports Development Centre, Percy Drive. Contact John: [johnkellyx@aol.com](mailto:johnkellyx@aol.com) £2.

### Thursday

- Kids' Kickboxing, Martial Arts, 6-10yrs 5pm, 11-15yrs 6pm Sports Development Centre, Percy Drive. Contact Adam: £5.00.
- Army Cadet Force, 12-18yrs, 6.45-9pm, Army Reserve Centre, Scott St. Contact: <https://armycadets.com/> £20.00 enrol fee
- 13+ club 13-18yrs, 4-6pm Amble Youth Project, Dilston Terr:
- Kids' netball, (Sept - Easter hols) 8-13yrs, 6.30 - 7.30pm, JCSC gym. Contact Joanne: 01665 714888

## The Warkworth Concerts

Now re-established at Warkworth Memorial Hall, there's a cracking line-up over the coming months covering a variety of genres. The hall will normally be set up in cabaret style, enabling reasonable space between attendees. Ticket availability will therefore be limited and some concerts are likely to sell out. Tickets need to be reserved in advance by contacting me - see below.

Saturday 11 December: Ragtime Rewind Swing Band -1940's swing music, upbeat 1950's and modern songs with a vintage twist.

January: We hope to have one of our local bands that you may have seen at Warkfest. Details on our website. More events are in the pipeline. For the latest concert information see [www.wwmh.uk/concerts.html](http://www.wwmh.uk/concerts.html). For future notification of events, email: [peter.burnham@gmail.com](mailto:peter.burnham@gmail.com), Tel: 01665 711388).

## Carols for Christmas

Conductor Peter Brown, Organist Alan Gidney

Sunday 12 December at 3pm, St Pauls Church, Alnwick

Admission £7.50 at the door. Students free

## Amble Photographic Group

The Group has been able to survive during 2021 by conducting its meetings through Zoom. We were able to have speakers from far afield. However a number of members were unable to participate due to technical and personal reasons.

From January 2022 to accommodate all members there will be three face to face meetings per month in Trinity Methodist Church and one Zoom meeting. Details of the programme can be obtained from the Group's website. Anyone interested in joining please contact Helen Holmes at [helenholmes1947@gmail.com](mailto:helenholmes1947@gmail.com).

*Helen Holmes Membership Secretary*

### Sunday

- Coquet Canoe Club, 8+, 10-1pm, Coquet Canoe Club, Shorebase Trust, The Braid. Contact Tim: 01665 710367
- RNLI fundraising (DOE only), coffee morning volunteering, 10-1pm, RNLI Lifeboat Station. Contact via JCSC.

### General

- Skiff sailing, all ages, Coquet Rowing Club, Little Shore. Contact: [info@amblecsc.co.uk](mailto:info@amblecsc.co.uk)
- Surfing (equipment provided, bring a towel) all ages, various beaches. Contact Jon: 07944 398115 £20 - £30
- Football training midweek for ages u7s - u14s. Contact Sharon Chambers: 07415305988
- Young Women's projects, drop in, confidence building, practical skills Women's Workshop, Coquet Enterprise Park. Contact Julia Lyford: 07775817544 [info@womensworkshop.net](mailto:info@womensworkshop.net)
- Holiday activities at Amble Youth Project, Dilston Terr: Free

### Friday

- Endurance & strength training, 5-6pm Sports Development Centre, Percy Drive. Contact John: [johnkellyx@aol.com](mailto:johnkellyx@aol.com) £2.00.

- Indoor Adventure Play (term time only) School years 5-8, 6-8pm, Castle Mania, Coquet Enterprise Park, Ring: 01665 714888 £3.00 [May restart in the new year]

- Family Fun Night (first Fri of month) Deano and JP's disco, all ages, Radcliffe Club, Charles Rd. Contact Charlene: [radcliffeclub@yahoo.co.uk](mailto:radcliffeclub@yahoo.co.uk)
- Junior Cricket Coaching (May - Sept) 8-18yrs, 6-7.30pm Cricket Club, Morwick Rd. Warkworth. Contact Richard: [richard@warkworth.co.uk](mailto:richard@warkworth.co.uk) £2

### Saturday

- Puffin Theatre Club, drama group, 5-12yrs, 9.45-11.15am, St Cuthbert's Parish Hall, Contact Rosie or Sarah: [puffintheatreclub@gmail.com](mailto:puffintheatreclub@gmail.com) £8



## Santa's sleigh visits

Rotary Amble and Warkworth has had to organise its traditional Santa's sleigh visits with Covid-19 restrictions in mind. To keep everyone as safe as possible circumstances dictate that Santa will not be knocking on everyone's door. However, Santa and his helpers hope that you will all come and say "hello".

We hope everyone will understand and continue to support us in our efforts to raise funds for local charitable and needy causes. Please keep in mind that every penny we collect is used for charitable purposes, we do not have expenses. We are all volunteers!

We will be in Amble on Monday December 13 from 4.30pm to 7.30pm. Starting at Robsons Way and Gloster Park and ending at Ivy Street, via Dandsfield Square and Links Avenue.

Places, dates and times are on our website: [ambleandwarkworthrotary.org](http://ambleandwarkworthrotary.org)

## FC Amble Juniors sponsors

FC Amble Juniors u7s want to thank Phil and Diane from Lumiere, Amble for their kindness in providing bootbags for our future stars.



Below: Thanks to Linda at Curiosity Corner for sponsoring the under 11s kit

## Coquet mud provides a tasty pitstop

When we think about Northumberland and its stunning coastline, the first image that springs to mind may be the long stretches of golden sandy beaches that seem to go on forever. However, one habitat that may get overlooked is one of the most important – mud.

Mud flats are formed when fine silt and soil particles are deposited in environments such as estuaries, salt marshes and sheltered sections of shoreline. A host of marine life lives and thrives within muddy sediment, such as crabs, worms and molluscs. With such a high diversity of food, it is no wonder that mud flats are attractive to our shorebirds.

An extensive mud flat has formed in the Coquet Estuary, and this interspersed with a large section of saltmarsh, makes it one of the best places to see shorebirds in the county. Each autumn, thousands of waders return from their breeding grounds. Most are regular visitors, such as dunlin, redshank and curlew. Up to 2,000 golden plover regularly use the estuary; their whistling call filling the air as their golden plumage glimmers

in the sunshine. During the spring and autumn migration, many birds will drop onto the mud flats or saltmarsh for a 'pit-stop' to feed and rest during their long journey.

Shorebirds come in all shapes and sizes, and have evolved special features to help them find their preferred food, such as the shape of their bill and the length of their legs, allowing them to exploit different food sources across different habitat types. With so many birds in one area, it makes these mud flats a productive hunting ground for birds of prey such as peregrine falcons and sparrowhawks, both regularly seen.

If you are walking along the coastal path or paddle boarding or kayaking, look out for the birds and admire them from afar. Causing the birds to fly away results in them using energy that they desperately need for survival, and going into the cold winter, they might not survive.

We can all help to keep this special part of the world a safe haven for our coastal wildlife by giving Space for Shorebirds. See more on: [www.spaceforshorebirds.co.uk](http://www.spaceforshorebirds.co.uk)



## Coquet Churches Together Christmas services

**St Cuthbert's Parish Church** – Church Street, NE65 0DY

Saturday 11 December: 10.00am-12noon

Christmas Sing-Along

Sunday 19 December: 6.00pm Christmas Carols

Christmas Eve: 4.00 and 6.00pm – Christingle Services, 11.30pm Midnight Communion

Christmas Day: 10.00am Christmas Morning Communion

**Trinity Methodist Church** – Percy Street, NE65 0AG

Sunday 19 December: 4.00pm Christmas Carol

Service by Candlelight

Christmas Eve: 11.30pm Midnight Communion

**Hauxley Chapel** – Low Hauxley, NE65 0JR

Sunday 12 December: 4.00pm Christmas Carol Service.

Sacred Heart and St Cuthbert's RC Church – High Street, NE65 0LE

Christmas Eve: 5.00pm First Mass of Christmas

**St Mark's United Reformed Church** – Wellwood St, NE65 0LA

Please contact church secretary on [revdalmills@gmail.com](mailto:revdalmills@gmail.com) for information

For services at Warkworth, Acklington and Shilbottle please see [stlawrence-church.org.uk](http://stlawrence-church.org.uk)

## Kickboxers' success at WKO World Championships

Kickboxers from Hybrid Kickboxing Amble gained success at the 2021 World Kickboxing Organisation Open World Championships held in Barnsley.

Robert Howey gained a hard fought Silver medal in the sport boxing coming up against a very experienced young lad in the final.

Fourteen year old George Wardle had a hard day, managing 4th in the K1 but came back to win Silver in the Sport Boxing against a very strong lad from Poland. This is an even bigger achievement as George has only trained

for three months.

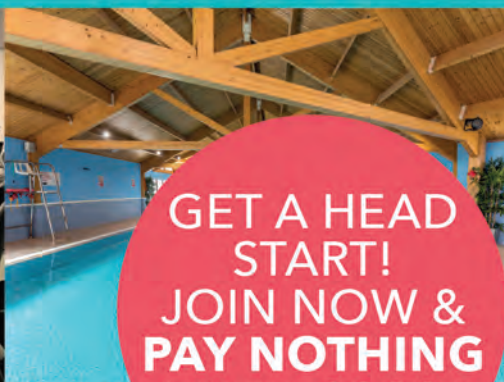
Star of the show was 16 year old Keowan Eaton who gained Silver in the K1, and Gold in the Sport Boxing then taking Gold and Championship belt in the Ultimate Fighter (1 round boxing, 1 round kickboxing and 1 round low kick) Keowan stopped his English opponent in the first round.

All three lads were a credit to team Hybrid and their families, this being their first time representing not only Hybrid Kickboxing Amble but the England team as well.



# AMBLE HEALTH & LEISURE CLUB

AT AMBLE LINKS COASTAL HOLIDAY PARK



GET A HEAD  
START!  
JOIN NOW &  
PAY NOTHING  
UNTIL 2022\*

## Services and facilities available:

- Gym with state-of-the-art Technogym equipment
- Access to the Technogym wellness cloud
- Fitness classes
- Progress monitoring with the Tanita system
- 20m indoor heated swimming pool
- 5m learner pool
- Sauna and steam room

GYM PACKAGES  
from  
**£33 PER MONTH**  
or  
**£330 ANNUALLY**

JOIN THE GYM WITH A FRIEND & GET A 10% DISCOUNT<sup>+</sup>



## JUMP IN & LEARN TO SWIM IN 2022!

Take the plunge and enrol on our 2022 swimming lessons. Our first intake starts 10th January. Contact our team for more details.

KIDS SWIM  
FREE<sup>^</sup>

if enrolled in  
our swim school

\*Terms & conditions apply. Annual minimum term of 12 months applies. \*Join between the 1st January 2022 and 31st January 2022 with a friend to receive a 10% discount off our full price memberships. Both adults must subscribe to a 12month membership to qualify. ^Kids swim free when they are an enrolled member of our swim school.

For more information please contact

**01665 710 727**

or email [AmbleLeisure@parkleisure.co.uk](mailto:AmbleLeisure@parkleisure.co.uk)

Amble Health and Leisure Club, Links Road, Amble,  
Northumberland, NE65 0SD







ARTS COUNCIL  
ENGLAND



Northumberland  
County Council

The Joicey Trust



Community  
Foundation

## AMBLE'S PANTO RETURNS

Northumberland Theatre Company Presents

# CINDERELLA



Directed by  
**GILLIAN HAMBLETON**  
Written by  
**STEWART HOWSON**

Tickets £11 | Available to purchase from Eventbrite

December 2021	17 <sup>th</sup> 6pm	18 <sup>th</sup> 2pm 6pm	19 <sup>th</sup> 2pm 6pm	21 <sup>st</sup> 2pm 6pm	22 <sup>nd</sup> 2pm 6pm	23 <sup>rd</sup> 2pm 6pm	24 <sup>th</sup> 1.30pm	29 <sup>th</sup> 2pm 6pm	30 <sup>th</sup> 2pm 6pm	31 <sup>st</sup> 1.30pm
------------------	-------------------------	--------------------------------	--------------------------------	--------------------------------	--------------------------------	--------------------------------	----------------------------	--------------------------------	--------------------------------	----------------------------

NTC Touring Theatre Company Ltd | Registered in England & Wales: 1448366 | Registered Charity No: 509251