



The Ambler

Amble's Community Newspaper

Issue 133 April/May 2022

Amble responds with aid and support for Ukraine

Generous Amble residents have donated goods and money to help the people of Ukraine, with hundreds of bags full of humanitarian aid handed into collection points in the town. Groups, organisations and schools are collecting, donating, or spreading the message as best they can.

Many of the aid collections began after a Polish family in Longhoughton posted on social media asking for donations of aid for Ukraine.

Linda Wilkinson who runs Pet Support on Church St was more than happy to provide space. She told the Ambler that a friend of hers had seen the social media post and had suggested her shop might make a good collection point. Linda said that seeing images on TV of Ukrainian people suffering bombing and displacement had aided her decision to help.

"I had an uncle killed in WW2, and a lot of my family were affected by the bombing. I see so many comparisons with what is happening now in Ukraine. I am amazed at how generous Amble people have been – but not surprised. Amble people do rally together."

Mary McNally representing the local churches called in with several large boxes of goods, and told the Ambler she had been given around £500 in cash by a number of people, who preferred



Children from Amble Links First School showed their support for the people of Ukraine.

to donate money. "We'll continue to collect for Ukraine as long as it's necessary," she said.

Schools and businesses are also offering help or to be collection hubs.

Brambles staff and parents have donated goods, as did Warkworth Primary, and JCSC have encouraged their staff, pupils and family to donate to Hadston House's collections.

Amble Links First School decorated their windows in blue and yellow and invited parents to donate £1 to the DEC Ukraine appeal. Amble First School children are potting sunflowers in blue pots and selling these to raise funds for children's charities in Ukraine.

Morrisons have already had two trolleys of donations and said they will continue to collect as long as necessary.

Brewis Beer are joining forces with other Northumberland breweries to create a Ukrainian

recipe 'anti Imperial stout'.

Goods from Pet Support will be taken to Hadston House, and then on to a county council organised drop off point to be sorted, put onto trucks and taken to Poland.



l-r Mary McNally representing Amble Churches Together; Linda Wilkinson, Margaret Brown, Ken Brown of Pet Support

Amble people have a proud history of helping those affected by disaster in Ukraine and eastern Europe.

After the Chernobyl nuclear power plant disaster of 1986, staff at Cheviot Foods worked with a charity called Medicine and Chernobyl Blyth, before starting their own charity called Chernobyl Orphan Group. This raised money and hosted children from orphanages in Belarus which

was the area worst affected by the nuclear fallout.

Helen Hardy who helped start the charity in 2007 told The Ambler what she remembers of the time: "Medicine and Chernobyl Blyth started in 1993, and the Chernobyl Orphan Group started in 2007. Families hosted children for a month every year.

"People were always very kind to the children. Local dentists and doctors gave their time free

of charge to help, also a local shoe shop in Amble called Shaws used to provide the children with shoes. St Cuthberts Church, MKM, Warkworth Round Table, to name a few, also donated time and money. People of Amble also donated clothes for the children. Families used to do all different kinds of fund raising.

"The biggest kindness, I must say, were the families who hosted the children. They treated them

with love and kindness as if they were their own. Some families are still in contact with the children who are now grown up with their own families.

"Lisa who stayed with my family when she was seven, came to stay with us with her two girls for a month in 2000. She still remembers all the kindness of the Amble people. I spoke to Lisa the other day. They are all so frightened with what's going on."

Sell your home with an award-winning agency

Your local Yopa agent is valuing homes now

- Fair fixed fees from **£999**
- Save an average of **£2,800¹**
- **Flexible** payment options



Contact **Helen Kelly**
on **07764 780673** or
helen.kelly@yopa.co.uk



1. Potential saving of £2,872 when choosing Yopa's fee of £999 based on typical UK high street commission of 1.51% and average UK house price of £256,405. Visit yo.pa/savings for more information.

Yopa
Local in a big way

Feedback wanted on Braid Hill development



Computer image of proposal as it would be seen from the Braid

Plans to create a 'Lifetime Neighbourhood' in Amble are being made available by Northumberland Estates who are asking for a community response. Their website says, "We are keen to engage with local people and receive feedback on the proposals, before refining the plans and submitting a planning application."

The plans include Independent Supported Living Apartments, residential apartments and traditional housing. The location of the development is on Braid Hill, where the Tesco supermarket had originally been planned.

The proposed accommodation would provide a range of 1-bed and 2-bed

homes, designed to facilitate the changing needs of residents over their lifetimes.

The Independent Supported Living Accommodation ('extra-care') will provide 48 apartments, comprising ten 1-bed and thirty eight 2-bed residences. This will include staff facilities, communal lounges and open green space.

Thirty five residential, 2-bed apartments will be provided alongside ten residential, 2-bed houses.

The proposals will also include the delivery of 'affordable housing' for local people.

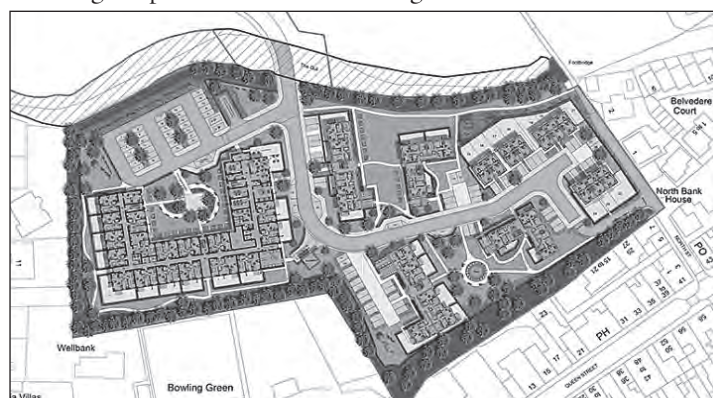
The site would be accessed by a new access road from the A1068 via the existing residential estate road at Rivergreen.

Pedestrian access will be provided directly from the site to Amble Town Centre via North Street.

The proposals will incorporate extensive green infrastructure and landscaping, including the provision of

usable open green space. The landscaping proposals will maximise opportunities for biodiversity.

To see the plans and leave your comments, visit the website: www.amble-lifetime-neighbourhood.co.uk



Amble Food Bank update

Amble Food Bank would like to thank our local communities for their continued overwhelming generosity during what is fast becoming an even more challenging year financially. THANK YOU!

Food donations continue to come in via Morrison's and their pick-up bags and also the drop off point at the Co-op. Special thanks go to Preet and Raj from The Best One (VG) shop in Amble who continue to donate food items to us, and to the Farm Bakery for encouraging their customers to donate to us via their collection tin. We recently received £67.50 – thank you and your kind customers. Thanks to Radcliffes Café Bar who have been donating food items to us on a weekly basis.

If you are a local business and think you may be able to support us, please get in touch.

The charity, The Country Food Trust, have also kindly donated hundreds of individual meal packs to us. These meals are game based and are high in protein and low in fat. At Amble

Food Bank we do endeavour to cater for all dietary needs, including gluten free and vegetarian. And when we have supplies available we also provide food for clients' cats and dogs.

We continue to receive FareShare items from the Co-op at the end of every Sunday. Chilled and ambient surplus food items are collected by our volunteers and taken to some of our most in need families or frozen for future distribution.

Despite all of the above generous donations, due to an increase in referrals to Amble Food Bank (almost daily at the moment) we are now having to shop at least once a week for extra food items that we are short of. In January alone we spent in excess of £1,000. Because of this we have set up another Just Giving page and have set a target of £2,000. At the time of writing this we have received £355 – thank you so much to these donors! Search for Amble Food Bank at Just Giving or go to the pinned post at the top of our Facebook page.

Should you wish to make a financial donation, cash or a cheque can be placed in an envelope addressed to us and posted through the letter box at Trinity Methodist Church on Percy Street, Amble. Or, if you prefer, you can do a bank transfer (or set up a standing order) using the following details: Amble Food Bank, sort code 77-20-04, acc number 17925260.

If you are in need (or know somebody who is), you can get a referral through an agency such

as CAB, Social Care, your local school or GP. Or you can contact Northumberland Communities Together on 01670 620015, 9-6pm, seven days a week.

A huge thank you goes to Megan Boyd who is taking part in the Great North Run on September 11. We are honoured that she is running to raise money for us. Radcliffes Café Bar has kindly offered to be her official sponsor.

General enquiries: amblefoodbank@aol.com.

M.B. JOINERY

- All joinery work undertaken
- Internal & external painting
- Laminate Flooring/Skirting Boards

FAST AND FRIENDLY SERVICE

RING: 07776 072049

Motorhome parking on the Braid

Tourists heading to our beautiful coastline will have three new places to stay – after councillors backed a trial that will allow motorhomes to stay overnight at some of the county's most popular destinations.

Car parks in Amble, Beadnell and Bamburgh, will be subject to a year-long trial designed to offer more options for people travelling to the seaside spots.

Councillors on Northumberland County Council's strategic planning committee approved the scheme for the three car parks – at Amble Braid Car Park, at Benthall in Beadnell next to the beach, and the car park opposite Bamburgh Castle.

Only self-contained motorhomes with their own toilets and wash basins will be allowed to stay in the existing car parks, for an as-yet undecided fee.

Coun Richard Dodd told the committee that the council "cannot ignore the fact that more motorhomes are popping up on Northumberland's roads. It seems as if it is going to be the future in the UK for a good while, lets grasp this and make sure we do the right things and get some money in the tills."

Cllr Caroline Ball said: "I don't want to see the car parks chocker-block with motorhomes but on the other hand we have the need. I have a little bit of concern about the policing of this. If there is no enforcement people will just park there."

Only a small number of spaces in each car park will be allocated to overnight stays – eight in Beadnell and six in the other two locations.

The committee's chairman, Cllr Trevor Thorne, said: "I think these motorhomes are part of the tourism of the future.



The plans were voted through with no objectors, and are being introduced amid concerns that some tourists are bypassing Northumberland because of a lack of places to stay for a single night.

Tourism is so important to Northumberland, we don't want to miss out."

Holiday-makers will have to book in advance and could face fines if they do not adhere to the rules.

Fr Malcolm Cairns R.I.P.

It is with sadness that we record the death of Fr. Malcolm Cairns, Priest at the Roman Catholic Church of the Sacred Heart and St Cuthbert in hospital on Friday 11 February 2022.

Father Malcolm came to Amble in September 2012 from Blackhall in Durham where he had served for 13 years. However, prior to that he had spent a life in industry as an industrial chemist before studying for the Priesthood and being ordained in 1998.

Father Malcolm's funeral took place at Corpus Christi Church, Kelvin Grove, Gateshead, on 28 February followed by interment at Saltwell cemetery.

There will be a Memorial Mass at Sacred Heart and St Cuthbert on Friday 6 May at 7pm.



Until the situation is clarified, the parish will be served from St Pauls Parish in Alnwick with only one service at the weekend; a Vigil-Mass at 5.00pm on a Saturday evening.

'We have not gone away' as St Marks church shuts doors for good

We finally left our completely emptied building on 31 January, 2022, with mixed feelings: great sadness that, after 127 years, worship would no longer take place in the building, and huge relief that the failing building was no longer our responsibility.

The building is now under the auspices of Northern Synod; they will put it up for sale in the course of time.

We have a new home at the Dry Water Arts Centre where we worship most Sundays, and we are very happy there.

We continue to support Amble Foodbank and the community of Amble, and you will still see us at many events - we have not gone away!

Harry McQuillen's

Age of insecurity

Prioritising our thoughts and feelings is a funny old business. Recent events make us all wonder what's going on in Ukraine. Vladimir P and his compatriots are acting in ways that are unlikely to foster world peace. My crystal ball isn't giving me a clear picture of the outcome of the conflict between Russia and the rest of Europe. Incidentally, any new conflict always seems to fill the airwaves, with less interest in earlier conflicts. All wars go through phases, and all have an end point, however horrible the events, and however delayed the peace that follows.

Covid is falling out of the headlines. We're told that numbers are falling while

virulence is variable. Fewer precautions, fewer vaccination centres, and fewer people in hospital because of the condition we've come to fear. compulsive TV viewing of medics telling us daily what we should or shouldn't do is now a thing of the past. Much controversy on pronouncements of doom and gloom, with more than a modicum of scepticism, is all around us.

And then there's the weather, a national obsession. But it can't be much fun to be flooded anywhere on earth. TV brings us pictures of people being rescued by boat, and even by the valiant efforts of members of our emergency services. Australia has suffered

badly, from flood and fire; again the usual coverage is harrowing. I return to my constant theme of climate change, sea level rise, ice melt and reduction in biodiversity. Remember the Dad's Army character who often said in sepulchral tones "We're doomed". John Laurie was brilliantly cast in a wholly memorable series. So what are we going to do about any of the above? All we can do is use our intelligence and abilities to cope with all that comes our way. Religious or not, we all find joy in some aspects of life, and difficulty with others. Losing large chunks of my roof has been a trial, but most roofs can be mended, as mine has. I look forward to my return to the

town I love, the house I love and the friends and acquaintances I love.

At present I am in leafy Berkshire, being looked after by members of my wonderful family. Surely this is a time when we value the help we receive, just as others value the help we give them.

Let's give a thought to everybody who hasn't been as lucky as some of us have been. The Economic Squeeze will hit most of us. We all know what the problems are, but what are the solutions? If there's a better solution than co-operation, I'd love to hear it.

Felicitations.



Public toilets set for improvement

Amble public toilets at the Town Square and the Harbour and those at Warkworth Beach, along with 19 other towns, are set for full refurbishment.

The council's Cabinet approved £1.35m for a three-year programme of improvement and refurbishment work at their meeting in February.

£920,000 will be allocated to improve facilities in main towns and key tourism destinations. A further £500,000 is earmarked so other toilets will be brought up to standards that are easier to clean and maintain; while an additional £50,000 will go towards accessibility improvements in all toilets, with simple changes such as colour contrasts, better signage and lighting.

Councillor John Riddle, Cabinet Member for Local Services, said: "It's very important we invest in improvements to these vital facilities which we know are valued by both residents and visitors - at a time when some areas are closing their toilets.

"We want everyone to have access to top quality facilities, and these refurbishments will ensure people have access to modern, improved and clean toilets throughout the county".



Sarah Pringle and daughter Sophie met Brenda Blethyn and Kenny Doughty as they filmed the latest series of Vera. Photo Susan Pringle

Vera returns to the Friendliest Port

Filming for the latest series of Vera took place in Amble recently. And as usual the lovely cast members took time to make friends with passers-by.

Sarah Pringle told the Ambler: "We were out for a walk and noticed them filming. Brenda was lovely and waving at Sophie, so when there was a break in filming she was chatting to us asking if we lived local, and saying what a lovely place Amble was."

The Vera actress is obviously a fan of the Friendliest Port. Amy Baston told the Ambler, "Brenda asked me if I lived here, I said 'yes all my life'. She said 'you're very lucky, it's so beautiful here' and I said 'yes it is!'"

'Bull walloper' Johnson

In response to our article on Roland's Butchers in issue 132, we were contacted by Mrs. Cook, who is the youngest and only surviving child of 'Bull Walloper' Johnson.

Mrs Cook left Amble when she was 19. She is now in her eighties and lives in Cornwall, but still has family in Amble so does visit the town occasionally. Her nephew forwards the Ambler to her.

Bull Walloper Jack Johnson had ten children, five boys and five girls. He was known as the Bull Walloper because he drove (walked) the cattle from the market in Alnwick to Roland's Butchers in Amble.

The family lived in King Edward Street. Unfortunately, Mr. Johnson died when Mrs. Cook was only nine years old. Other local residents remember her sisters Lizzie and Mary.

The children were collectively known as Bull Walloper Johnson's young-uns.

Vivienne Dalglish

Lionheart Cleaning

Commercial & Domestic Cleaning Services

Your One Stop Cleaning Service Provider

Our ever expanding teams of fully trained and insured operatives are insured and able to carry out all of the following aspects of Domestic and Commercial cleaning for you, or your business.

Carpets and upholstery	Conservatory Roofs	Pressure washing
Windows	Commercial Kitchens	End of Tenancy
Gutters/Fascias		Post Build
		General

01665 713448 www.lionheartcleaning.co.uk



TELEPHONE ORDERS WELCOME

01665 710 442

MONDAY TO SATURDAY: 11.30AM-9.00PM SUNDAYS: 11.30AM-2.30PM

★★★★★ NORTHUMBERLAND COUNTY COUNCIL

1 BROOMHILL STREET AMBLE NORTHUMBERLAND NE65 0AN

Expertise Wills and Wealth

PROTECT YOUR FAMILY ASSETS

Long Term Care • Third Party Challenges • Divorce
Business Failure • Sideways Disinheritance

LASTING POWER OF ATTORNEY in areas of
Property and Affairs • Health and Welfare

Make sure you have them in place while you're fit and healthy

WILLS Simple Wills • Trust Wills • Free Reviews

PROBATE Call us for Expert Help and Advice

PENSIONS Do you have pension pots scattered
here and there? Now coming up to retirement?
We're here to help you go through your options.

A MEMBER OF THE WILL WRITING SOCIETY

Ring Enid: 07772 182 130 • 01670 855 768
for a **FREE CONSULTATION** in your home



Email: enid.eww@sky.com
Barrister Intermediary and
Member of the Legal Services Guild





The Ambler

Fourways 2
6 Dilston Terrace
Northumberland NE65 0DT
Tel: 01665 712929
www.theambler.co.uk
editor@theambler.co.uk
Facebook: TheAmbler
Twitter: AmbleByTheSea
YouTube: AnnaAtTheAmbler1



Editorial Team:

Vivienne Dalgliesh
Cath Findlay - Chris Herzberg
Norma Hinson - Ian MacKarill
Andrew Mounsey - Bartle Rippon
Editor: Anna Williams

Thanks to:

Mark Beswick & The Artograffi Crew

Distribution:

Charlotte, Wendy,
Rachel, Lorraine

Printing:

CBS World, Alnwick

Would you like to join
The Ambler team? We are a friendly
group who welcome contributions
and help from anyone who would
like to volunteer.

Thanks to all our contributors, sponsors and advertisers:

NCC Community Chest

Rotary Club of
Amble and Warkworth

Inner Wheel Club of
Amble and Warkworth



The Ambler is a proud member of
the Independent Community News
Network

The Ambler is a project of
Amble Development Trust



The Ambler is printed six times per
year. The views expressed in *The
Ambler* and *The Ambler Online* are
not necessarily those of
the Editorial Team

2022 Submissions dates:

#132 - 7 Jan	#135 - 1 Jul
#133 - 1 Mar	#136 - 2 Sep
#134 - 22 Apr	#137 - 4 Nov

WHAT YOU SAY...

Do you remember my Ukranian uncle?

This photo is of my Ukrainian
uncle, Yaroslav Zahorodnyj,
later re-named by Amble as
Johnny. It was taken in Amble in
the 40/50s. He met my auntie
Sally during the WWII years when
he was a prisoner of war and Sally
was a land army girl.

For those who don't know,
many Ukrainians were conscripted
/forced into the German army
under threat of death to fight
for Germany. After the war, the
couple married and started their
family of 4 children and lived
during the 50/60s at 27, High
St. near the top of The Wynd.
They lived in the ground floor flat
and the O'Keefe's (Vivian) lived
upstairs.

How sad that Johnny never
saw his Ukrainian family or visited
his home country ever again,
always fearing reprisals from the
war years.

He and Sally raised a lovely
family and he began work as a
coal miner. He soon became a
popular and respected Amble
community member. No one
seemed to ever mention Johnny
without adding, 'What a bloody
grafter!' He had one of the
best-kept allotments and became
a champion prize-winning leek
grower... He was a passionate
family man and a fabulous
provider.

I hope you have enjoyed
hearing Johnny's story and I
wonder if he is remembered.

My autobiography, 'Wor Tomis
The Polis', has had a fantastic
reception, especially in NE
and Amble in particular. I have
decided to donate ALL profits to
The Ukraine Appeal.

Tom Curry

(Tom's book is available from



Yaroslav Zahorodnyj aka Johnny

NF Young's in Queen St. and
Lumiere Pod 5 The Harbour and
via Tom himself: email him at
tomwcurry@gmail.com)

Let's make Amble a hedgehog metropolis!

With the number of fences
down in Amble because
of the storms I was reminded
of the needs of one of our most
loved creatures - the hedgehog.

With numbers drastically
declining it is now at severe
risk of extinction. They need
"hedgehog highways" as they
need to forage quite long
distances at night.

When you are repairing

or putting up your new fence
can you please make a 5"
square hole at the bottom so
they can travel from garden to
garden? If you do you may be
rewarded with a view of these
entertaining animals.

With all the new
development there is less open
space but we can compensate by
looking after our wildlife. With
climate change I think we know

that unless we look after our
planet and the wildlife in it, the
planet is not going to look after
us. For further tips on helping
hogs see the website Hedgehog
Street.

No slug pellets please as
well! Let's make Amble a
hedgehog metropolis!

Ruth Hawkins
Priory Park, Amble

More memories of the legendary Dr Robertson

In the recent edition of The
Ambler, there was an extract
from Tom Curry's book,
entitled "The legendary skills
of Dr. Robertson". I was so
pleased to read it because it
seemed to me that, just after the
war, he was attending to most
of Amble's medical needs, from
his home in Oswald Street. If
anyone should be remembered,
it is our old doctor.

It is perhaps typical of him –
doing his mini-op on poor Ray
in front of the open fire. I have
been told of another accident,
this time in Hauxley colliery,
when the doctor appeared at the
coal face in his helmet.

In 1949, I was invited to

play cricket, in an evening
match at Alnwick. During play,
I was hit in the face and my jaw
was broken. A man took me in
his car to Alnwick Infirmary,
but after waiting half an hour
without anybody seeing me, I
walked out and caught the next
bus home.

I went straight to Oswald
Street and rang the doorbell.
Doctor Robertson appeared and
I told him, "I've been playing
cricket and I've broken my jaw".
He said "Right, you'll need to
go to the Dental Hospital in the
morning. Wait a minute and I'll
give you a note". No fuss and
no complaints!

I have heard of his remarks

about Lucozade before and he
must have been an army doctor
during the war, because he was
reported as having said to one
of his patients, "I never saw any
fat men in Belsen".

I attended his retirement
presentation in the Brown
Memorial Hall and I remember
he made a very fine speech
about Amble and the many
characters he'd met. He was
noted for his regular visits to
the homes of his old patients
and it was a shame that he did
not enjoy the long retirement
that he deserved

George Young
Woodbine Street, Amble

What became of those in the Lord Mayor's Camp?

Please can we learn what became of the inmates of the Lord Mayor's Camp. They had many friends
in Amble, No one saw them leave. Maybe historian Harry McQuillen has information.

Ambler reader from Amble. Age 92.

Sort out your Saints

Getting your collection of saints in the right order can help you sort out what is happening around you, what has happened where you live and what sort of a place you can expect to be in when you wake up tomorrow.

Folk in most parts can talk about their local saints and what they did for everyone. I'm a recent arrival in Amble, and I can already say that it differs from many spots on the East Coast of Great Britain in that it doesn't have a prominent saint's name as part of its description.

It doesn't even have a prominent vampire, like Whitby, to help attract tourists to visit its shops. Amble seemed a bit lonely without a saint of its own. The North East Coast is especially gifted with saints. Even if no one knows how which saints are connected with which places, there are less than vague hints in most of the North East that Cuthbert, 'wor Cuddy' who, maybe, had something to do with Lindisfarne and is commemorated in school, church and street names in many places, is a saintly mascot for the

Geordie.

I suppose that Amble has the Bede Club, and Bede is buried next to St Cuthbert, supposedly in Durham Cathedral. But that does not really count as a local saint for Amble. There is one, very local saint, to be sorted out from the History Heap. He is better called a really dead local saint, since he left the North East as a dead man in 1127, so we are often told. He is one of the Saints Henry, the one usually called Saint Henry of Coquet. Saint seekers from other parts of the country have a tendency to think that Coquet is a French word, though this Saint Henry wasn't French.

Surprisingly, he was a rich Danish noble and had probably given up being a Viking marauder, before becoming a hermit on the clerical fringes of the Lindisfarne monastery and world famous scriptorium, their name for a handwriting factory.

None of the books mention why his claim to the island wasn't ever disputed by anyone, so he could have been taken for a possibly fierce foreigner, or just left alone. Saint Cuthbert had



Image by Thomas Guignard via Flickr/CreativeCommons

given a sort of blessing to the island when he chose it as the place to meet Elfleda, Prioress of Whitby, and the daughter of a king of Northumberland.

That was Cuddy's only recorded 'date', and it could have been followed up by a claim on the territory of Coquet Island by one or other of their institutions, especially after one of them was made a saint (see Father Alban Butler's 1833 edition of Lives of the Fathers etc)

There is another story to be told about Saint Henry of Coquet. Wikipedia says there is a stained glass window featuring Henry in the church of St. Thomas of Canterbury, in Deal, in Kent. This could be someone trying to get all of the

English saints on their stained glass window, their church being called after a famous English saint, who did not know that one of the few things we know about Henry is that he was Danish.

Coquet Island is fast becoming a special breeding and feeding ground for a small number of rare seabird breeds, and places to see puffins are getting as rare as hermit pirate saints from Denmark.

Mat Curran

Editor's note: The image above is not of Saint Henry of Coquet. So if anyone should be near St. Thomas of Canterbury, in Deal, in Kent, could they get us a photo of the relevant window?

A new way to connect with Northumbria Police

What is Northumbria Connected?

- Northumbria Connected is an easy way for you to send and receive messages from Northumbria Police. You decide on the updates you want to receive. It's a way for us to better understand your concerns directly

Why join?

- Northumbria Connected allows you to share your priorities, concerns and views with us directly. You will receive information that you want to receive from us on those matters that affect you and your communities most
- Northumbria Connected makes Northumbria

Police more accessible to you. It allows you to share your feedback with Northumbria Police on how you think we have tackled the problem. It allows you to create groups with other people in your area with the same interests

How to join:

It could not be easier, simply visit:

www.northumbriacconnected.co.uk and register by clicking on the 'join' tab.

One of our staff will then register you on the system so that you can receive alerts and information for your area.

County Council leaves Amble

Northumberland County Council has now removed its services help desk from Amble Library.

Amble residents who need help on county council matters such as paying for services, housing issues or bus passes will have to travel to NCC's Alnwick office on Greenwell Lane NE66 1HB.

This is open Mondays, Wednesdays and Fridays from 10am to 1pm.

Customer services can also be contacted via phone: 0345 600 6400 during office hours.

Help for jobseekers

Northumberland charity is enhancing its employability work across the county with the help of a grant from Newcastle Building Society.

Community Action Northumberland runs six employment hubs across the county, including in Amble, and delivers a wide range of employability support to help local people overcome the different barriers they face getting into work. It partners with Bridge Northumberland to deliver employability services.

In Amble, you can access the service every Tuesday and Thursday at the Amble Youth Project on Dilston Terrace.

The hubs operate on a drop-in basis and offer support tailored to an individual's needs, which could include gaining internet access to carry out job searches, providing one-to-one support with IT skills, planning job-seeking activities, and addressing any health and social welfare issues that may limit an individual's ability to seek work.

Julia Plinston, of Community

Action Northumberland, says: "People in the countryside can face difficulties when searching for work over and above those faced by their peers in urban areas, such as fewer local opportunities, higher travel costs, less access to essential support services and poor internet connectivity.

"The holistic approach we take also brings benefits to our service users in terms of building self-confidence and feeling valued, which can be important to their prospects."

THE MAD JAM WOMAN & Pride of Northumbria



Award winning Preserves & Relishes

Fourways One
Bridge St, Amble NE65 0DR
07766 857680

Also available at the Seafood Centre
www.madjamwoman.com

Car park will be free for first hour

The car park in Turner Street will be free for the first hour, once redevelopment work is completed, the Ambler has learned.

Original proposals for the town centre car park had always included a charge in order to justify the expense of buying and redeveloping the space.

However, in the February county council meeting, Glen Sanderson, leader of Northumberland County Council, announced that NCC would not impose charges in their town centre car parks.

He told councillors, "We are investing in new car parking spaces and we've agreed once again, to be one of the very few councils in the country that will not charge for town centre car parks. We do this to support our businesses and market towns, for the benefit of tourism, and also for residents."

In view of this, the Ambler asked for clarification on the situation regarding potential charges in the Turner Street car park. Paul Jones, Service Director - Local Services told us:

"The County Council has agreed to commit £1.9m in capital funding to provide additional parking capacity at Turner Street car park in Amble, with the primary purpose of the car park being to help support the growing demand for visitor/tourist parking in the town.

"Parking charges will be implemented at the new visitor car park once the redevelopment works are completed as it was considered necessary to have some income from parking charges to help improve the value for money of this scheme given the significant capital investment being made.

"However, it should be noted that we will make provision for users to park for free for the first hour, so that it can also be used by local residents who want to pop into the town centre to access the local shops/businesses.

"We will also be maintaining the free on-street parking arrangements currently in place in Amble along with the existing arrangements at NCCs short stay Queen Street car park which allow free parking with max one hour stay."

Anna Williams

A competition has been launched to design a flag for Amble, which will be flown in the town square during the Queen's Platinum Jubilee and Puffin Festival festivities.

Andrew Gooding from Amble Development Trust said "There are a number of flagpoles in the Town Square and we have been gathering various flags to fly throughout the year to mark events.

"Her Majesty The Queen will become the first British Monarch to celebrate a Platinum Jubilee, with seventy years on the throne in 2022. We think it's an occasion where flags should be flown.

"However, we don't have a flag that celebrates Amble and we want to change that! That is why we are launching an Amble Flag Design Competition, open to everyone in Amble, to help us design a town flag."

Individuals, schools, and community groups are invited to work up their proposals for a flag in line with the competition terms & conditions and design guidelines.

Designs should be A4 or electronic and sent/dropped in to Fourways2, Dilston Terrace, Amble



Could you design a flag for Amble?

NE65 0DT or emailed to andrew@ambledevelopmenttrust.org.uk

The deadline for submissions is 4 April 2022.

The flag will be flown in the amphitheatre in the Town Square during the Queen's Jubilee holidays and Puffin Festival in June 2022.

The winning flag will be sent to Her Majesty The Queen, together with an official celebratory Platinum Jubilee message from Amble.

The winner will receive a replica of their flag and £20 voucher to spend in an Amble store of your choice.

Winners will be notified on 11 April, and announced to the public via media release and social media on 15 April.

The terms and conditions and design guidelines can be downloaded from The Ambler's website: www.theambler.co.uk/2022/03/04/flying-the-flag-for-amble/

Authority hopes for prohibition of scallop dredging



NIFCA patrol boat Robert Arckless MBE

It has been a busy and interesting start to 2022 at the Northumberland Inshore Fisheries and Conservation Authority (Northumberland IFCA). Following a stormy start to the year, fishing activity out of Amble and in the district has been steady and we are grateful to the members of the local industry who submit their monthly permit returns to the IFCA giving details of their fishing activity in the district.

These returns cover potting activity for shellfish and trawling and they provide vital data to enable the IFCA to form the most accurate possible understanding of the state of shellfish and other fish stocks in the district.

In the last 12 months, NIFCA has made amendments to its trawling byelaw and we

have also recently completed a consultation upon a byelaw to prohibit all dredging activity for scallops in the NIFCA district.

Further word is now awaited from the Marine Management Organisation and Department of Environment Food and Rural Affairs (Defra) who must consider the byelaw before it comes into legal effect, but we are hopeful that this will happen and that there will be a complete prohibition of dredging for scallops and the potential harm which that can cause to the seabed later in the year.

NIFCA is also dealing locally with the outputs from the Fisheries Act 2020, which was made following the United Kingdom's exit from the EU and the common fisheries policy. Defra is currently consulting upon the Joint Fisheries

Statement under the Fisheries Act which will lay out how the objectives of the Fisheries Act will be met. There are eight fisheries objectives in total, including that fisheries should be environmentally, economically and socially sustainable; that data is collected and shared between authorities and the best scientific advice is used to develop management measures; that British fishing boats have access to fish in all UK waters; and that the impact of fisheries on climate change is reduced and fisheries are able to adapt to the effects of climate change (eg. shifting stocks).

Back on the local scene, NIFCA is a member-based organisation and recruitment has recently been taking place for new members of the Authority. If you have an interest in and knowledge of local fisheries and/or the marine environment then you would be very welcome to apply for any future vacancies which there may be on the Authority. These are interesting roles and a great way to make a contribution to the management and future of our local fishery.

You can contact NIFCA by phone on 01670 797676 or by email nifca@nifca.gov.uk / and Facebook and Instagram.



Join us to celebrate Easter!



Every Sunday 10:30am
The Radcliffe Club
Charles Road Amble
NE65 0RA



harbourlightschurch.com



Coquet Vets

Amble, Northumberland

Forsyth House, Percy Drive,
 Amble NE65 0FP
 (01665) 252 250

Coquet Vets is dedicated small animal practice.
 We provide high quality, friendly and supportive veterinary care for you
 and your pets at affordable prices.

Being a small team means we can get to know you and your pets
 personally and provide consistency when you need it most.



- Open Monday - Saturday.
- Pet health club available.
- Free parking on site.

• Appointments available the day you call.

www.coquetvets.co.uk

Info@coquetvets.co.uk



Make it look pretty again!

Maintenance and Design

- weeding
- grass cutting, edging
- planting, flower potting
- hedge trimming
- pruning
- landscaping
- paving, fencing

STANTON

Coast & Country Garden Service

01665 798543

AMBLE



Visit us on Facebook

CBSWorld

Complete Business Supplies



Printing Services

Leaflets • Booklets • Books • Newsletters • Posters
 Carbonless sets and books • Fine art prints • Invites
 PVC Banners • Foamex boards • Signage

www.cbsworld.co.uk

Unit 5 Elm Square, Lionheart Enterprise Park
 Alnwick, Northumberland NE66 2ES

Tel: 01665 660022 Email: sales@cbsworld.co.uk



Cromie
 PHARMACY

NHS
 Providing NHS services

Blood Pressure
 Checks

Vaccinations

Allergy
 Treatments

Hair Loss
 Treatments

Erectile Dysfunction
 Treatments

Period
 Delay

Travel
 Vaccinations

Weight
 Management

Migraine
 Treatments

Contraception

Smoking
 Cessation

Podiatrist

and treatments not routinely offered by the NHS
 To discuss any of our services in private,
 speak to a pharmacist

Visit our website for more information:

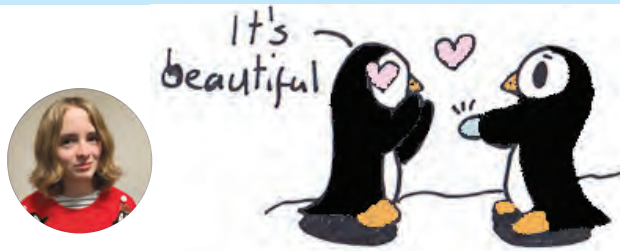
www.cromiepharmacy.co.uk

Info@cromiepharmacy.co.uk | 01665 710 896

158 Percy St, Amble, Morpeth, NE65 0AG



Happy Penguin Day!!!



Aren't penguins amazing? (The answer is yes) They are so amazing that they even have their own day on 25 April because that's when Adelie penguins migrate north – only 4 days after my birthday!

So, in honour of the penguins, here are some cool penguin facts:

- There are 18 different species of penguin – my favourite one being the chinstrap penguin.
- The penguin's black and white feathers are for camouflage
- They can't fly because of evolution
- Emperor penguins are the biggest type of penguin
- Emperor penguins can hold their breath for up to 27 minutes, and they can swim as fast as 6 – 9 km/h
- Penguins don't have teeth
- Penguins propose with pebbles

And that concludes this article, and happy penguin day. Bye!
By Grace

Shaving my head !!

I recently decided I wanted to shave my head. This wasn't a new idea- it's been pretty much inevitable for about a year now, but it was only recently I actually plucked up the courage to do it. And to force myself into it, I decided to do it for charity.



young people can be themselves and thrive.' which I think is amazing!! I was nervous and excited to cut it, but overall I'm really glad I did it- it feels very freeing.

I would definitely recommend a chop if you want to raise some money or make a change in

The charity I chose is Mermaids, an LGBT+ charity with a focus on helping transgender children and their families. I can't remember where I heard of them first, but I knew when deciding on a charity it had to be them. Their aim is 'to create a world where gender diverse children and

your life (showers are so much faster).

So far I have raised just over £500 but the page is still open! Justgiving.com/ava-tibbitts – it all goes straight to the charity and every penny is appreciated!!
By Ava

Aromantic life



Nowadays, everything seems to be a love story. There's a constant idea that, at the end of book or movie or TV show, the two characters will kiss, marking a character arc complete and a battle successfully won, and that idea works its way into our everyday lives too.

Being single is 'bad' and you should always be on the lookout for that special someone to 'complete' you- that's what we're told, but we all know that isn't true. Not to mention there's some people who don't want any romance at all. Like, ever.

The week after Valentine's Day was Aromantic Awareness week, a celebration of the aromantic community. Aromantic is a term that basically refers to someone who experiences little or no romantic attraction, so they don't want a romantic partner.

People who are aromantic don't get crushes on people and their ideal future doesn't involve the classic dating and getting married. Unfortunately a lot of people who aren't aromantic can get angry

about aromantic people as they feel as if romance is something everyone must want.

It's hard for some people to understand what being aromantic must feel like, especially with movies and TV shows (and the people around you) convincing people that they have to be in a romantic relationship or they surely must be crazy. Not only do people think aromantic people are insane, but they also sometimes think that they're heartless and don't feel any love. This isn't true.

Aromantic people might not want a relationship, but they still have lots of love for their family and friends, and for many of them having a best friend can be just as good (if not better!) than a romantic partner.

So, although for lots of people romance is a great thing that brings joy to their life, it's not the same for everyone. Some people don't want a romantic relationship, or they don't feel romantic feelings at all, and that's okay! If you want to learn more, a good book for older readers is Loveless by Alice Oseman, all about being aromantic.

By Lily

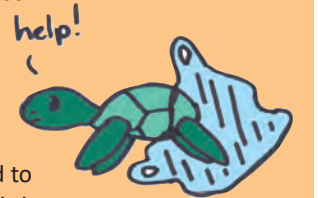
PLASTIC POLLUTION

I don't need to explain to you the catastrophic effect single-use plastic has had on our climate, but I will tell you about the positive steps recently taken for change!

The United Nation's Global Plastics Resolution will legally force the 175 countries who signed to be more conscious about their plastic pollution. This includes decreasing the production of plastics and addressing the full cycle of plastic use.

This UN treaty is not voluntary, so will lead to change- this is an incredible first step against climate change and it's really exciting to see our government get involved.

By Ava



Could the war in Ukraine help us go greener?



already stopped using coal / charcoal

Russia's invasion of Ukraine has got European governments (including the UK) to look at their energy supplies.

Countries in Europe getting gas from Russia are in fear of Russia not giving them gas anymore, so they are looking for alternatives.

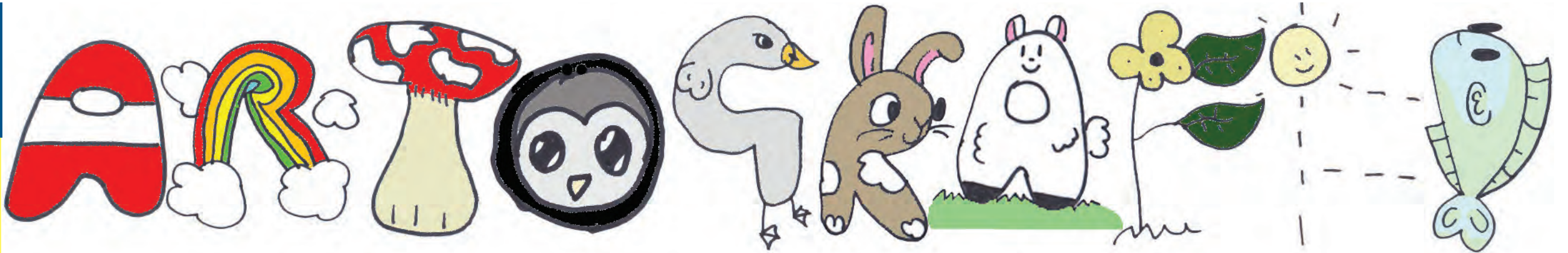
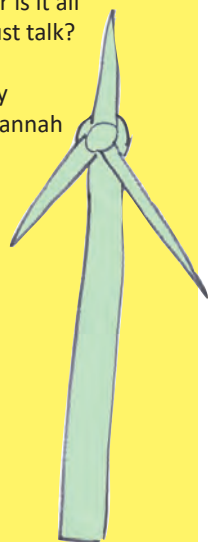
One of the countries - Germany, has said that they want to turn all the energy that they use to renewable energy (solar and wind power) by 2030.

They want to make at least 80% of it renewable. They've

In the UK, business secretary Kwasi Kwarteng has said the UK needs to get renewable energy sources and cut down on the fossil fuels.

Will this happen? Will they do this? Or is it all just talk?

By Hannah



I CONFESS: I HATE VEGETABLES



I hate vegetables so much. They are bitter and the texture of most of them is very unpleasant.

If I never saw a vegetable again, I would be very happy. The only vegetable I can tolerate are potatoes. I like fries, mashed potato and roasted potatoes. With gravy!

I do like meat (I bet you couldn't guess). For as long as I can remember I have not eaten vegetables or fruit. I think they taste really bitter, and I don't like the texture of most vegetables. My favourite meal would be chicken nuggets and chips. And tomato sauce. (No, that doesn't count as a vegetable!)

I do like cheese although my sister Hannah does not. She likes vegetables. So we are not at all identical. Hannah's favourite meal is homemade mango curry.

By Grace

How to be the best sibling

On Sunday 10 April, it's National Siblings Day, so we (the best siblings Amble has to offer) have decided to explain how it's done. One day you too could be as great as us if you follow these simple steps.

Share

L: Sharing is very important to stop arguments, otherwise you just end up fighting over everything all the time like cliché TV show siblings. Come up with some good ways to share things, like formatting the article so you both get a chance to talk.

A: I agree! One way we share food is if one person halves it, the other gets to choose which half they want- this way you'll try to half it as equally as you can. Overall though, sometimes it's just best to be generous- they're your sibling after all!

Enjoy each other's company

L: Despite the fact your sibling might be annoying at times, everyone has good traits, and your sibling surely must have something good (they grew up with the fabulous you after all). Make sure to spend quality time together, like picking a weekend and going out shopping

or for a walk!

A: It's another example of sharing, just this time with time! Make sure you pay attention to what your sibling likes/ wants to do instead of just dragging them along to all your stuff.

Find compromise

A: Compromise is about finding a midpoint in arguments. It's important to care about what your sibling wants, so if they want to go first for a change maybe you should just let them! Without arguing!!

L: Yep, compromise is great. But maybe compromise doesn't have to include insisting going first because it's 'only fair' and instead the midpoint in the argument could be letting the clearly more experienced article writer go first.

Don't mess with your siblings chair when you disagree with them

L: Do not sink their chair down and then laugh at them for being short. It's not that funny.

A: Tell your sibling to get a sense of humour, and let you come up with the ideas, instead of basically trying to write a siblings article by yourself.



DON'T FIGHT EVEN WHEN YOU'RE SIBLING IS BEING ANNOYING

L: For STARTERS, I am not trying to write it by myself, look at that nice little section below me you have to write in. And

SECONDLY, stop trying to steal the computer away while I'm typing because that's-

A: Stop being so immature and GET OFF MY HAIR WHILE I'M TRYING TO WRITE!

Still be besties in the end because that's what being siblings is all about

L: This final step is the most important because, although your sibling might be super annoying at times, they're still family. And they're kind of cool when they're not messing with your chair. And maybe you should've let them write a bit more of the article after all (you can't be right all the time).

A: She may be stupid, but she's right about that. People with siblings are so unbelievably lucky that we get an automatic best friend from birth so, if you have a sibling, go give them a big hug!

By Lily and Ava

Boy and Davey need a new home



Our dog charity - previously Alexa's Animals - now has a new name. We're now Northumberland Dog Rescue - still rescuing and rehoming dogs in Northumberland. This means we have a new website page www.northumberlanddogrescue.co.uk (and yes, just the one d) as well as a new Facebook page Northumberland Dog Rescue. Please visit these to have a look at dogs available for adoption.

If you or anyone you know has some time to spare for a very good and local cause please consider the Northumberland Dog Rescue. Post pandemic everyone's lives are a little different, and here at NDR we find ourselves in need of a little help. We need volunteers for a variety of roles but in particular to help out at our shop in Amble. The hours are 11am - 3pm, but any time you can give will be much appreciated particularly by our dogs like Boy and Davey (pictured).

If you are able to help please visit www.northumberlanddogrescue.co.uk and fill in the contact form and one of our volunteers will get back to you. If you want to support us, there is also a donate button on our website. www.northumberlanddogrescue.co.uk



Branch Administrator Vacancy

Join our local funeral team supporting families in the Amble and surrounding community.

We care for families at their time of need with core values of compassion, dedication, integrity and respect. If you're organised, a great communicator and have the highest levels of professionalism and empathy, we'll provide full training and plenty of opportunities for personal growth. Further details and to apply, go to

williampurves.co.uk/vacancies

01665 712 277

amble@williampurves.co.uk

Sanderson House, 18 Bede Street, Amble NE65 0EA

WILLIAM PURVES
EST. 1888
FUNERAL DIRECTORS



MOCHA MONDO
COFFEE

PROUDLY
PRODUCED IN
NORTHUMBERLAND

CALLING ALL BUSINESSES

CALLING ALL BUSINESSES | CALLING ALL BUSINESSES | CALLING ALL BUSINESSES

We're here to help! If you're looking for ways to help boost business, being able to offer a coffee takeaway service might be the answer.

We offer coffee machines for lease or purchase so you can be flexible with your commitment. If you'd like more information, please get in touch!
mochamondo.co.uk Unit 6C, Coquet Enterprise Park Amble, NE65 0PE



COMES WITH
**HALF PRICE
COFFEE
FOR LIFE**

T&Cs apply

Providing holiday fun for Amble youngsters

The community of Amble are coming together to ensure that children, young people and their families in the local area can access fun and exciting provision during the school holidays.

This has come about due to The Northumberland Holiday Activity partners which include Leading Link, Northumberland Communities Together and Thriving Together. The partnership have accessed funding from the Department for Education's Holiday Activity Fund and the National Lottery Communities Fund via North East Child Poverty Trust. The main message coming through is when a local community works together with one vision, more can be offered, and sustainability of provision will continue once the funding has ended.

The Amble Youth Project has been running holiday camps over the past two years really well, aimed primarily at the under 13's. The offer had included a very exciting programme offering a vibrant and enriching mixture of arts, physical activity, cooking, music and trips to local attractions with a hot lunch provided every day. Now with the help of many partner organisations within Amble, this can be extended to be more accessible to teenagers and families.

Many Amble and local providers came together on 10 March to talk about how they can be involved, and it quickly became very evident that there was already a lot happening in



Discussing holiday activities in Amble. Photo: Matthew Mahoney

Amble but with a bit of support and co-ordination even more could be offered.

Capacity was the biggest hurdle for many and so there is going to be a call out for anyone living or working in Amble to come forward and join the team either on an hourly basis, or during Easter, Summer and Christmas holidays. Not only could you earn some extra money there is also quality training and upskilling opportunities available as well of being part of this great community development initiative.

Leading Link have already approached James Calvert Spence College in a search for young people to be involved, but there are also opportunities for adults too. There will be training, involvement in community events such as the Puffin Festival and working with others across Amble and the surrounding areas. Some fabulous experiences and learning that can be accessed for enjoyment and also to help gain employment if this is relevant.

In addition to this, local businesses, schools, and agencies are coming together to offer activity weeks or days to include water sports both on the lake and sea, arts and craft, physical activity, and cooking. The Northumberland Holiday Activity Team are still asking for other potential providers to come on board which would help with sustainability of their own provision, as well as offer a wealth of opportunities to Amble's children and young people.

Lyn Horton from Leading Link says 'this is such a positive initiative, which aims to ensure that the funding available stays in Amble and helps to create and build relations. There is no doubt that there is high energy and positivity from many in Amble that we have met so far, but we also know there will be more out there. We want to ensure everyone that wants to be part of it, can be. Come on board, it's going to be great!'

For more information, please contact us on info@leadinglink.co.uk or phone 07950 763613.

Young people call on local businesses to help

Young people in Northumberland with additional needs are asking businesses to step forward and support them to gain valuable skills to get into employment. Gaining much needed work experience and interview skills through local businesses could help young people looking to get into work make the first step in that journey.

Mocha Mondo in Amble is one of a number of businesses that have offered that support through Northumberland County Council's Careers Guidance Team and Northumberland SEND Information, Advice and Support Service (IASS), but more are needed.

Martin Homer of Mocha Mondo said: "We want to support young people to prepare for work. As Mocha Mondo coffee serves people from all walks of life, it makes sense to offer support, training and recruitment in equal measure. Support for young people with additional needs is ultimately rewarding for all of us."

Businesses are being asked to offer a mock job interview to a young person (aged 16-24) with additional needs and provide 10-hours work experience. This would make a great difference to any young person looking to progress into employment.

If you think your business can help them, reach their full potential and gain the experience they need to build their futures - get in touch.

To find out more and sign-up see: nland.uk/EVOLVE to submit your organisation's contact details or call the team on 07929 846289.

Pet care tips from Coquet Vets

Easter is coming - but beware as chocolate poisoning is serious for dogs

A few weeks ago we had Mal a Staffordshire Bull Terrier brought to us as an emergency.

Mal had eaten 500 grams of chocolate (naughty boy!) His owner immediately called us and we told her to come straight down.

Our vet Emily gave him an injection, subcutaneously (under his skin) to make him sick. This injection works pretty quickly and poor Mal started vomiting up a lot of undigested chocolate.

Poisoning with chocolate is due to the methylxanthine content (theobromine and caffeine). The amount of methylxanthine in different types

of chocolate varies.

The darker and more bitter the chocolate, the more dangerous it is to dogs. In severe cases, muscle tremors, seizures, and heart failure can be seen.

If you think your pet has eaten chocolate, please call us immediately for advice on 01665 252250.

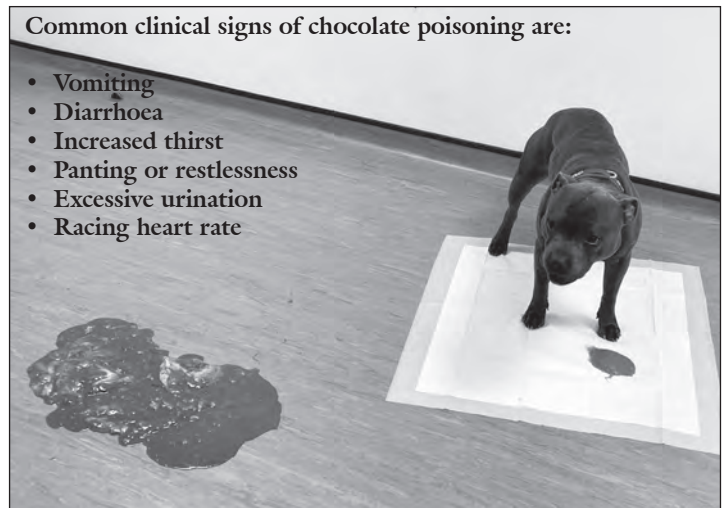
It is often useful to keep the wrapper with the ingredients on it, as this information will be needed.

Mal has made a full recovery due to the quick action of his owner.

From the team at Coquet Vets
www.coquetvets.co.uk

Common clinical signs of chocolate poisoning are:

- Vomiting
- Diarrhoea
- Increased thirst
- Panting or restlessness
- Excessive urination
- Racing heart rate



Fortunately, Mal the Staffie made a full recovery. Photo: Coquet Vets



Reports from our *County Councillors*

Northumbria Police have visited and taken action regarding the behaviour of certain individuals around Queen Street, involving businesses and residents' property.

Police have been tasked to provide vital visibility on the street and utilising their CCTV systems to identify any further ASB within this area.

All reported anti-Social behaviour is raised at joint Police, NCC safety community meetings which include NCC public protection officers, highways, and schools, they also liaise with outreach youth workers and communities together assisting in reducing anti-social behaviour. NCC have a dedicated community safety team who deal with ASB, neighbour disputes, vehicle

disorder and noise problems. Phone 0345 600 6400, Ask for Public Protection. Email Public.protection@northumberland.gov.uk Police call 101.

For myself, I would like to thank all involved at Coquet Medical Group and Wansbeck General Hospital; doctors, nurses and all the wonderful staff.

Last summer I was diagnosed with an inguinal hernia and was put on a waiting list for a Laparoscopic Hernia Repair.

Coquet doctors gave advice on wearing a harness giving support to the hernia and letting me continue work while waiting for surgery.

Special thanks to the anaesthetist who made me feel at ease by explaining the procedure, the surgeon for his skills' and his staff, the friendly and cheerful recovery

nurses who looked after me before I was released home later in the day.

The care I received from the whole NHS team from start to finish was amazing.... I have nothing but praise for all who work within this brilliant organisation.

I honour the funding principles of our NHS thanking all health workers who are the beating heart of one of the wonders of modern times. Let us secure the future of the NHS for generations to come, for as Aneurin Bevan said "No society can legitimately call itself civilised if a sick person is denied medical aid because of lack of means"

Cllr Terry Clark Amble, Hauxley and North Broomhill

Terry.Clark@northumberland.gov.uk
07779 983768

Ed: Cllr Watson did not submit a report

Please leave space for shorebirds

Spring is here! All over the world, birds are preparing for spring migration, with some literally travelling to the other side of the globe to reach their summer breeding grounds! It is a great time of year to spot rare and unusual birds which are passing though the UK on their journey north.

Spring here at Space for Shorebirds means one thing - shorebird nesting season is upon us! Last year was our first nesting season since the service was set up, and we learned a lot of valuable lessons about the challenges our nesting shorebirds face, especially ringed plovers.

Ringed plovers are very territorial and begin to establish their breeding territories in March. This often results in disputes among the birds; fluffing up their feathers and charging into each other in a bid to claim the space. They look for high sections of shingle, sand and loose pebbles above the high tide mark to make a nest called a scape - a shallow depression dug into the sand in



which they lay four tiny, well camouflaged eggs.

The beach nesting season occurs at the same time that the beaches become busier with people and dogs visiting, meaning they are very vulnerable to disturbance. Incubating adults will leave the nest if they are threatened, leaving their precious eggs vulnerable to predation or

trampling. Repeated disturbance to their nest could result in the parents abandoning the eggs completely and moving to less favourable locations to have another nesting attempt.

Throughout the nesting season, with the help of Coast Care volunteers, we will be surveying the coastline for the presence and behaviour of ringed plovers in suitable nesting habitat. From there we can decide whether we can help by creating a nest protection area using fencing and signage to protect the nest from human and dog disturbance.

The breeding population of ringed plover is red listed for conservation concern. The declines are partially driven by habitat loss, predation and increased recreational use of our beaches. Also, as a wintering species ringed plover have declined by 52% in the past 25 years; so quite a dramatic decline. Therefore, it's really important we do all we can for this vulnerable species.

We were blown away by the

level of support we received for our efforts to protect the ringed plovers last year, and we are extremely grateful. You can help us give the nesting birds a fighting chance of having a successful season by looking out for fencing and signage on your visits to the coast and giving the nest protection areas space to avoid disturbing the birds.

If you see any signs of ringed plovers beginning to form territories or make nests, please do let us know! Contact us through our website (www.spaceforshorebirds.co.uk) or our social media channels: Facebook and Instagram (@spaceforshorebirds), and Twitter (@ForShorebirds). We will post regular updates about the nesting birds throughout the season, so make sure you give us a follow!

As always, thank you again for your continued support, and we look forward to seeing you out on the coast soon!

Katherine Dunsford
Space for Shorebirds

Supporting access to job opportunities

Bridge Northumberland has received an extension of funding from the National Lottery Community Fund to take the current project through to March 2023. The project, which is also funded by the European Social Fund, has to date, helped over 1,600 Northumberland residents. This funding enables the programme to continue, supporting clients into work, training, volunteering opportunities and to overcome the barriers to changing their lives.

Bridge Northumberland engages with and supports residents in a changing labour market, making sure they can take advantage of the new job opportunities. In doing so Bridge is helping the Council achieve the aim of an inclusive economy for all Northumberland residents.

"Our one to one support and a partnership approach has proved to be successful because people who have been out of the workforce for long periods face many different problems. One

size does not fit all," said Anne Lyall, CEO Northumberland CVA, Lead Bridge Partner.

Bridge Northumberland is delivered for Northumberland County Council by a partnership of six community voluntary organisations. Northumberland residents can take part free of charge and without risk to benefits if they are not in work, education or training, aged 16 up to retirement age

Programmes are devised to fit individual needs, supported by a Bridge Worker who stays

with the participant, providing one-to-one support through the programme.

Anne Lyall said, "Bridge programmes help people on a road to changing their lives - but they have to want to make that change".

Northumberland residents can apply for places on Bridge Northumberland's programme until September - you can find out more at www.bridgenorthumberland.org.uk. Further information: Jane Coney, 07957 888143



Welcome back to Trust Life. I begin this passage of Trust Life with a message to some of the recent visitors we have had! While Amble prides itself on being the Friendliest Port, there were three unwelcome visitors and we would prefer they did not return under any guise.

I refer to those named Arwen, Eunice and Dudley. Obviously, these are the storms and not any person with those names. They wreaked damage, havoc and chaos upon our little town with many repairs to buildings not yet complete. It is hard to know the emotional stress that this has caused to those affected.

Upcoming events

While not in the same category they also called another halt to our Festival of Lights activities, not once but three times. Not ones to be daunted or concede easily we are now hoping to incorporate a revised festival into the Puffin Festival activities at the beginning of June, which coincides with the Queen's

Platinum Jubilee celebrations.

During the Puffin Festival we have a film crew coming from Locality (former Development Trust Association) to film some of the projects the Trust has instigated, as well as speaking to locals, artists who have been involved in the sculpture trail and workshops, as well as participants.

Queen's Jubilee Fund

We have applied for funding through the Queen's Jubilee Fund run by NCC. If successful, we plan to run a community competition to design a flag for the town, purchase lily of the valley plants for the town square as these are the Queen's favourite flowers, and fruit trees for the community orchard.

On that note, I am pleased to say we have now received our free trees from NCC and will be planting them in the welfare in the near future. For further information on the orchard contact; andrew@ambledevelopmenttrust.org.uk

Bird Sculpture Trail

Our latest update on the sculpture installations; The conservation officer has agreed that none of the sculptures will detract from the locations, the ecology report for one of the Hauxley locations stated there was nothing of consequence on that site and we have a groundworks company ready to start once the CEMP report has been submitted, (CEMP being the construction, environment management plan). Then once we have a license from NCC we will be set to go, at long last!

Our job search facilities are now open from 9.30 – 11.30 each weekday.

If you would like to contact the Ambler or requiring a CV you can do so by ringing: 01665 712929 or emailing editor@theambler.co.uk or Julie@ambledevelopmenttrust.org.uk

Julia and all trust staff and trustees.

Commissioners celebrate new home on quayside



Warkworth Harbour Commissioners celebrated the opening of their new building Coquet House on the quayside. A larger launch event is planned for the summer.

Chair of the Commissioners Maurice Burnett said "this is a great achievement, after years of planning. Finally, we have a user-friendly building, fit for a 21st century harbour. I would like to thank staff for all their time, hard work and perseverance and welcome harbour users, whether regulars or visitors, to come and see this wonderful building."

Coquet House will house the Harbour Master and administrative staff. In addition, it has a large community room which can serve as a board room for WHC as well as being available for meetings and functions. The building is licensed to host weddings and civil partnerships.

There are five lettable units to generate income for costs, such as harbour maintenance. The building

moves WHC closer to its net zero objectives by delivering a more energy efficient building with solar panels and air source heat pumps.

The building was constructed by DP Builders who employed many local sub-contractors.

The retail units are:

- Bayside Hairdressing (Amble local Amanda Hume has relocated from Queen Street and employs four staff),
- Matt Robson Artwork (this is artist Matt's third retail property after Alnwick and Morpeth.)
- The Window Dresser (soft furnishings and décor expert Wendy Baxter, previously in the old harbour office)
- Salt & Co (Martha Gothorp a trained silversmith who already has a successful online jewelry business).

On the first floor the RSPB has a new office for its Coquet Island team.

The previous office is now returning to the name of its original purpose - The Old Customs

House. Beth Keen and Matt MacDonagh are creating a new café to be called the Old Customs House Tearooms. They previously

operated the Artique café on the Wynd. The Tearooms are aiming to be up and running in April. *Warkworth Harbour Commissioners*



Funeralcare

Our caring staff are here to listen and advise you, 24 hours a day, 7 days a week



Coquetdale Cottage, Queen Street, Amble
Tel: 01665 710437



Amble Town

Town: 6pm, 14th April, 12th May AGM: 6pm 12th May Venue: TBC
Amenities: 6pm, 31st March, 26th May Council Offices

COUNCIL

EAST WARD:	Helen Lewis, Ian Parks, 33 Warkworth Avenue, Warkworth. NE65 0TP	Craig Weir (Chair/Mayor) 76 Priory Park, Amble NE65 0HY 01665 712342	WEST WARD:	Jeff Watson 14 Magdalene Fields Warkworth NE65 0UF 07802 385367	David Bewley 11 Brinkburn Place Amble NE65 0BJ 07525713086	CEN. WARD:	Jane Dargue Kate Morrison, 3 Island View, Amble NE65 0SE 01665 711191	Vacancy 10 Sylvia's Close, Amble NE65 0GB 07795360513
-------------------	---	---	-------------------	--	---	-------------------	--	--

PLATINUM JUBILEE

The first celebration of this event began during Spring Half Term when members of Amble Youth Project joined with volunteers to plant a mixture of 'whips' along the West Cemetery northern boundary. Later volunteers planted another area at the cemetery and Members from Amble Coastal Rowing Club planted at the Braid coves. Let's hope they all survive the inclement weather and thrive in the years ahead. Next event- already firmly in your calendar- is the Celebration Fireworks taking place at the Braid on the Queen's Birthday 21st April. Planned to start at 9pm and although a Thursday it is during the school holidays so hopefully all the family can enjoy them- make sure children have some contact details with them in case you get separated. Please also remember that whilst there will be lights, the area is dark in places and very uneven so care is needed.

MEMORIAL CLOCK

If it is not already working, it should not be too long now. There has been a delay as whilst the pendulum spring was broken, it was decided to have an assessment of anything else which might need replaced. These parts are then individually made. Accessing electric components has been difficult as they were set behind the clock works- so these have been moved to a more convenient position. We do know how much the clock is missed and we thank everyone for their patience whilst this has been done.

GETTING ACTIVE

As the Spring weather approaches, thoughts turn to getting out and about to enjoy the countryside and improve your health by doing more walking if you are able. Sometimes we know where we want to go, other times we'd like a new experience or to share the pleasure with others. www.walkinginengland.co.uk/northumberland is a site where you can download information to help with that. It has walks of different lengths and terrains so no matter whether you are an active pensioner, have children, fit or have problems- you may be able to find something there to encourage you to enjoy the air, socialise or just stroll along.

COUNCILLOR'S CORNER

{Views expressed are those of the individual and not necessarily those of the council}

Since moving here thirty years ago, the town has increased greatly but the sports and leisure facilities have not. Several groups, spread all over the town organise activities and are a great benefit; however I would like to see all these activities in one place. Council have asked residents to complete a survey on activities in the town- in my opinion the response wasn't great in fact I thought it poor.

My own thoughts are that a Recreation Centre with a Community Hub would be great- a place where people can attend classes/courses or just sit and have a cuppa with friends. There are lots of benefits in having a complex- it keeps people fit both in body and mind, it benefits young people giving them something to do rather than hanging about the streets, it creates jobs and revenue and a sense of ownership within the town. Without support and your thoughts and suggestions fed back then I would assume Amble isn't really interested- Please prove me wrong.
Cllr David Bewley

PLANNING

A very complex matter mainly governed by national policies and guidelines. 'Don't want'.. 'Don't need'.. may be strongly held feelings but are not planning or legal grounds for refusal. First the site is considered in various ways- is it suitable for that development e.g. residential, industrial; has the land been used before- brownfield; is the scale and design appropriate; what could be the impact on other properties nearby. Then the effect on the locality can be looked at- the environment, the highway structure, the community facilities. These can only be looked at with documented reports to show the possible effect if the development goes ahead. No matter how widely held, speculation or belief that the infrastructure is not sufficient cannot be used to determine an application nor to instigate improvements in anticipation of the effect.

So if a development cannot be stopped, apart from the properties themselves, can the town gain anything? Financial contributions from large scale residential plans for improvements - S106 agreements; after lobbying hard, NCC now consider support for infrastructure e.g. finance towards education, health, recreation. We strongly emphasise this must be spent in the town itself. How does this help?

Housing: we are currently looking at a survey to prove what type of housing the town still needs- the community view seems to go from none to more smaller or rented properties. Concerns have been expressed about the number of holiday/second homes in the town. These can be restricted in new builds but only if there is a recorded minimum of 20%- current data shows 11% here but soon 2021 census figures will be released and we expect a change.

Education: data shows there is space for the higher ages but not at first levels; however until a public consultation determines whether to be two tier or three tier, no progress can be made.

Health facilities: the practice is looking at how best to utilise this as there are limitations on how money can be used.

Recreation: we are currently working with NCC to collect data on how this aspect can be improved and enhanced as without that recorded information, nothing can change. Regardless of all our desires for improvements, in the majority of cases only a percentage of the monies becomes available when the first house is occupied as it is only then that a true need is proved- so no massive amounts therefore no quick fixes.

Would a neighbourhood plan have stopped large developments? These cannot stop development, only hope to place them in suitable locations. With almost no community support for carrying out one, it was decided that the advantages did not merit the enormous cost of producing this as by the time these were legally allowed to carry any sway, the majority of Amble's land had designated uses or approved plans in place.

VACANCY

Tracey Hinson has resigned from her position representing Amble West Ward. We are sorry to see her go, thank her for all her support and wish her well in the future.

TOWN COUNCIL OFFICES, FOURWAYS 2, AMBLE. NE65 0DT Tel: 01665 714 695 www.amble.gov.uk

Email ask@amble.gov.uk Twitter: @AmbleTC Facebook: www.facebook.com/AmbleTownCouncil

Office hours: 10.30am-12noon & 1.30-3p.m. Monday to Friday Vicki Smith, Town Clerk Minutes available to view in Office or online

Music for royal occasions

Alnwick & District Choral Society
Conductor Peter Brown
Organist Alan Gidney
Sat 2 April 2022 at 7.30pm
St Paul's Church, Alnwick
£12.50 at the door. Students free.

Table Tennis

Table Tennis at Lesbury. Every Friday (except third Friday in the month) at Lesbury Village Hall. £2 per person.

We can provide bats. Everyone welcome (over 18s). 7-9pm with a break for tea and biscuits! Come along and enjoy a great event.

Amble Sword

We are back! Sword (dance) practice will recommence on Tuesdays from 19:30 at the Masons Arms Amble.

We are looking to recruit new dancers and musicians. All welcome.

See more at www.facebook.com/groups/1669245759800125

Commonwealth Airmen honoured at Chevington

This year, 2022, sees the 104th anniversary of the formation of the Royal Air Force and, as part of their RAF commemoration programme, Newcastle & Gateshead Branch of the RAF Association will hold a special ceremony at Chevington Cemetery to honour the 23 airmen from countries within the British Commonwealth who died in Northumberland during World War 2 and are buried there.

The ceremony will take place at 2:00 pm on Sunday 24 April and will be attended by senior officers of the Royal Air Force and by representatives of the air forces of Australia, and New Zealand.

Local civic dignitaries are expected to attend together with a large contingent of RAF veterans and local residents.

A Guard of Honour will

be provided by RAF Boulmer, supported by uniformed members of the Northumbrian Universities Air Squadron and cadets of the Air Training Corps. Standards of the RAF Association Branches and other ex-service organisations will be paraded and music for the event will be provided by the Backworth Colliery Band.

The commemoration service will be conducted by an RAF Padre, during which wreaths will be laid on the RAF Memorial and then a remembrance cross placed on the grave of each Commonwealth airman. The event will conclude with a march-past by RAF personnel, cadets and veterans.

All enquiries:

Mr Sydney Graham,
Branch Ceremonial Officer,
01670 731196

sydneygraham804@gmail.com

Amble Photographic Group



Amble Photographic Group's winning streak continues

The Northern Area Interclub Mono/Colour Print Competition 2022 was held on Thursday 27 January at Ashington Camera Club. Amble entered eight images, four mono and four colour.

Each image could score a maximum of 30 points, and Amble's entries achieved a total of 223, giving them a 13 point lead over second placed Blyth. David Jones's print of "Faith" (above) got the maximum score of 30 points.

Well done Amble and may your winning streak continue!

Anyone interested in joining us should contact Helen Holmes at helenholmes1947@gmail.com

Puffins return!



After a two year break due to Covid restrictions, Amble Puffin Festival is back!

The main festival will run on the weekend of Sat 4 and Sun 5 June, although there will be some fringe events during the preceding week. See www.amblepuffinfest.co.uk, Facebook and Twitter for updates.

The Warkworth Concerts



Friday 22 April: The Cloudberrys - Original modern folk, blues and acoustic arrangements of their favourite songs.

Friday 20 May: A double header with Jez Lowe and Benny Graham - Two of the best contemporary and traditional singers from the North East.

Tuesday 28 June: Internationally renowned Italian Classical guitarist Giulio Tampilini.

Thursday 14 July: Paul Anderson MBE & Shona Donaldson - a rare opportunity to see two of Scotland's foremost traditional music talents bringing

fiddle mastery and ballad singing to Warkworth.

Concerts take place at Warkworth War Memorial Hall. Normal start time is 8.00pm, with doors (and bar) opening at 7.30pm.

#The hall will be set up in cabaret style, enabling reasonable space between attendees. Ticket availability will be limited and some concerts will sell out.

Tickets need to be reserved in advance by contacting Peter Burnham

(Email: peter.burnham@gmail.com, Tel: 01665 711388).

For the latest information see www.wwmh.uk/concerts.html.

Amble Variety Show

We're back! Amble Variety Show is due to take place on Saturday, 7 May at 7.00pm at The Masonic Hall.

You may recall this is a free-entry show and donations are accepted during the course of the evening for Christian Aid. It is Amble's big effort for Christian Aid, taking the place of the envelopes - through - the - door.

We hope you will all support this show in its new venue. Remember the date :- 7 May 2022 at 7.00pm

See you there!!!!

Local History Group

East Coquet History Group has relaunched as Amble Local History Group.

They meet on the third Thursday of each month at 7pm at Dry Water Arts, Wellwood Street Amble NE65 0FG

Entry is £2 pp, no membership is required.

Upcoming talks are on the Bamburgh Ossuary Renovations at St Michaels Church, Alnwick The History of Cresswell All welcome.

Local kickboxers strike Gold



Sharon Crisp, George Wardle and Keowen Eaton

Three local kickboxers from Hybrid Kickboxing Amble competed at the WKO English Championships held in Barnsley

First up was Sharon Crisp in her first ever competition. Sharon made it to the finals in both Low Kick and K1 and came up against two very experienced opponents returning with two Silver medals.

Next was young George Wardle who had four fights in a row. First was boxing and after a close fight George came away with a Gold medal, Second was a Continuous kickboxing bout and George totally out-skilled his opponent to win Gold. He went straight into a K1 bout where his speed and skill totally outclassed his opponent getting him to another final. The final went the distance and George lost by a very narrow split decision. George who at only 14 years and with less than nine months training returned with two Gold and one Silver, is fast becoming a rising star.

Stepping up next was 16 year old Keowen Eaton with only two years training at Hybrid Kickboxing Amble who was in two straight finals. First a boxing bout against a very strong opponent where Keowen's speed saw him rack up the points on the score cards to take Gold

In his K1 final Keowen came across a very strong and experienced opponent and this was a much closer bout, but using his skill and speed he took another Gold Medal. This young man's record now stands at 5-0.

The medal total for a great day was four Golds and three Silvers all coming from a team with less than four years' experience.

Hybrid Kickboxing Amble is a local club which caters for all ages showing what can be achieved.

Massive thanks to sponsors TDL Autos LTD, McCauley Cullen (photography) Grayscale (tattooist) and Hotspur Residential

Music appreciation group

I run a 'music appreciation' group in Amble once a month on every 2nd Thursday at 1-00p.m.-3.00. We meet in the Masonic Hall.

This group is one of eleven I run in our area under the title O.P.A.L. (older people actively learning) our youngest members are in their 50's and we have men and women who like all genres of music and the programmes range from crooners, rock'n'roll, country and western, brass bands and music programmes from the B.B.C. to Dire Straits.

This is a lively, friendly group. Oh yes, no instruments to learn or singing in a choir. Just have fun!! Tel 01670 221924

e-mail: eileen.opal77@gmail.com

No yearly membership. £3.00 admission tea/coffee and biscuits provided.

Eileen Brown

18 ~ The Ambler

Coquet concert band

The Coquet Valley's own concert band is getting back to rehearsing this year's programme of challenging and varied music, following successful concerts in Felton, Rothbury and Acklington towards the end of 2021.

The diary for 2022 is beginning to fill up so look out for one of our performances near you. Better still, be part of the music making! If you play a brass or woodwind instrument to Grade 5 standard or above, why not come and join us on a Wednesday evening in Swarland.

Contact us via email coquetconcertband@gmail.com or contact us via our Facebook page.

Amble Pin Cushion

The Pin Cushion will be starting courses again in April but with no firm details yet. Please keep checking our Facebook page for details.

We're in several magazines currently: "Your North East Wedding" ("ask the expert" section); "World of Cross Stitching", (where our Lindisfarne cross stitch kit is featured); and "Simply Knitting", (with a lovely article about our inspiration behind our award-winning modern Guernsey knitting kits)



Bowling Club open day

Amble Bowling Club is holding an open weekend on their outdoor green at High Street, Amble on Saturday and Sunday 23 and 24 April. All are welcome to come and give bowling a try!

The event, which will run from 1pm to 4pm on each day (subject to the weather!) is open to people of all ages, from newcomers and novices to more experienced players.

Tuition will be given and equipment provided – please wear flat shoes or trainers.

We are a very friendly club with players of all standards from beginner to county level. New members are made to feel very welcome. Lawn Bowling is good fun and a perfect way to make new friends.

The club holds matches throughout the season, which runs from April to September. These range from casual rollups with other club members, friendlies with other local clubs, internal club competitions as well as competing in the local Northumberland leagues.

For further information please contact Alan Ravening on 07934446990



Amble WI winter litter pick



A big thank you to all the Amble WI members who volunteered at our week long litter pick led by Carmel Adamson, one of our Environmental Ambassadors, in and around Amble, including The Little Shore, The Harbour and The Braid.

There was always time at the end of the pick for a coffee and chat.

Linda Barrett

Good luck Saxons!



FC Amble U9 Saxons have reached The Northumberland Football League Trophy final 2022! A huge achievement considering that it is their first year together as a team and have beaten teams up to three divisions higher than themselves.

The players are fast improving and really enjoying themselves. Good luck for the final on Friday 13 May at 7.15pm at Newcastle Academy. *Sharon Chambers*

Come and join the community orchard project



The orchard will be planted at the Welfare on Acklington Rd

The Amble Community Orchard team met for the second time on 10 March to discuss and organise the creation of this exciting new venture at the Welfare. As it is a community project it will provide many ways for you and your families to get involved over the years.

Growing an orchard will take four or five years before it literally bears fruit. The area that has been earmarked for planting is next to the children's play area as shown in the image. Planting is being planned for winter 2022/23.

Why grow an orchard that takes so long when I can get apples from the shop?

Because the Community Orchard could mean so much more. It brings people together, it makes a contribution towards reducing CO₂, it will become a haven for wild life, it will make an otherwise sterile piece of ground productive, future events will be held there to help care for and

harvest the crop, possibly drink the cider and eat the pies.

There will be places to sit under cherry blossom and watch the children's play area, special places where you could plant a tree perhaps in memory of someone you have lost. It will be a place for contemplation and relaxation.

The brief being developed is that the orchard should be productive, a wide variety of apples for cooking and eating as well as heritage types that will do well in our town.

Not only apples but also plums, gages, cherries, medlars a whole variety of fruit through the year. All the harvest will be for the people of Amble to take and enjoy.

In addition there will be a pleasant seating area, and a well maintained and visually appealing area to walk through.

Yes, we will need help to achieve this, and there will be a range of opportunities available to

match the level of help provided. Initially there is planting, then pruning the young trees to make them strong and productive. Fruit trees need feeding and we would like to make our own compost on site. As the trees mature they need looking after to ensure they stay healthy.

I'm part of the volunteer

team, I came to Amble in 2017, I love gardening and fruit trees are really special to me as it reminds me of my mums garden, she was a green fingered wizard.

We welcome your support, come join us. Email andrew@ambledevelopmenttrust.org.uk

Mike Myers

Greener Lawns

Professional Lawn Treatments

For the beautiful lawn you've always dreamed of...

Green. Lush. Healthy. No Weeds. No Moss.

To arrange your FREE no obligation lawn survey and quotation call us on

01670 48 11 48

or email: info@greenerlawns.co.uk

You can begin at any time of the year and prices start from only £16 per visit

"Where the grass is always Greener"

Vic hands over the reins at Shorebase Trust

Coquet Shorebase Trust has a new manager after long time leader Vic Brown stepped down from the role last autumn.

Tim Stuart now takes the helm, and with over 25 years' experience in outdoor education all over the world, he is well qualified to manage the day to day running of the popular watersports charity.

Vic has been an active part of CST for thirty years, and for the last twelve years she was a voluntary manager. But now she is happy to step back, although she will still be around as and when necessary.

So was Tim a bit apprehensive stepping into her shoes?

"I thought it was going to be daunting when I first joined," said Tim, "but its nice to be able

to ask her things if I need to. I will try and leave her alone as much as possible!"

Previously Tim worked at the Sports Scotland National Watersports Centre in Cumbrae. "He's a real professional" said Vic, whose own credentials include representing Team GB in the kayaking slalom at the 1972 Munich Olympics.

Vic has seen many changes in the Shorebase Trust over the years. At first, back in 1972, it was part of what was then Amble County Secondary School, on the site of the current Middle School and her job title was Head of Nautical Studies.

In 1992 the project became a charity, and in 2015 their base moved to its current position on the Braid.

Coquet Shorebase Trust



Vic Brown welcomes new manager Tim Stuart

offers sailing, kayaking, canoeing, paddleboarding, windsurfing and powerboating courses and estuary tours, and

there are also clubs to join which makes prices more affordable. See their website for details. www.coquetshorebase.org.uk

Skipper 'gutted' at loss of trawler

Crowds gathered on the Charbourside at the end of February to watch salvage teams as they began to raise an Amble fishing boat which sank in the harbour during Storm Arwen.

The day was bright but cold, and the man pacing along the quay sometimes watching closely, other times hardly daring to look at all, was Ian Jackson, skipper of the Kindly Light.

Ian told the Ambler: "I only bought her a year ago. I've spent all the year doing her up just how I wanted. Then Storm Arwen came and she sank. I'm gutted"

And to add to Ian's woes the prawn trawler wasn't insured.

"I had all the paperwork together and it was booked in for January. I don't know what I'll do now. We'll get her out, have a look and see where we go from there."

The salvage team from Tyne & Wear Marine based in South Shields, told the Ambler that since Arwen, they had raised seven vessels, all casualties of storms.

The lifting operation for Kindly Light took several hours, as a diver had go back down to adjust cables in order to bring the vessel to the surface. Pumping gear was then installed to remove much of the water.

The trawler was then moved to the Little Dock.

Anna Williams



Ian Jackson's prawn trawler sank in Amble harbour during storm Arwen in November



Quayside walkway: we keep asking the questions

Readers may remember the Ambler's story on the closure of the quayside walkway. (Issue #131: *Transparency needed over closure of walkway*)

As expected, the article has drawn a lot of attention and we have received many messages of support in our quest for transparency over the situation regarding the walkway, which has been closed since last summer.

Now we have had a bit of an update from Northumberland County Council:

"The Council has had further dialogue with the owner of the Marina regarding their decision to close the public walkway along the Coble Quay due to their safety concerns over the condition of the railings.

"The County Council acknowledges the local concerns raised over the length of time that this walkway has been closed off and is committed to working with the Marina owner to determine the scope and extent of the repairs needed to enable the walkway to be reopened to the public.

"The work to specify the repairs required is currently being progressed and a further update will be provided in due course."

Here's hoping the repairs can take place soon. We'll keep asking for updates.