



The Ambler

Amble's Community Newspaper

Issue 135 Aug/Sept 2022

Heartache as virus hits Coquet rare birds

Fears for the future of an endangered bird species have been voiced, after the devastation wrought by bird flu on Coquet Island.

Over 28% of the red listed Roseate Tern colony on the island has died, a very worrying statistic as Coquet Island is their only breeding site in the UK. It is feared figures could rise to 50%.

The outbreak of the Highly Pathogenic Avian Influenza (HPAI) H5N1 virus hit northern coastlines hard in early June. Thousands of gannets from Bass Rock fell foul of the disease, and for weeks many dead and sick birds have ended up along Northumberland's beaches. The virus rapidly affected guillemots, terns and gulls, all in the middle of their breeding season.

On Coquet Island, wardens could only watch in despair as what had been forecast as a bumper year, rapidly turned into heartbreak. Before the virus hit, the team had recorded record numbers of Roseate, Arctic, Sandwich and Common Terns, and the Kittiwake population was the highest it had ever been.

Monitored by the RSPB, the island is an internationally important breeding site for



Wardens on Coquet Island hope the virus has peaked, so are preparing for next year by clearing and disinfecting the nest boxes

40,000 seabirds. The rarity of the Roseate Terns means no public landings are allowed.

"We've gone from elation to despair," RSPB warden Paul Morrison told The Ambler. "We were due a record year, but all that has hit the buffers. The virus hit so rapidly. First were the Common and Arctic Terns. Then it spread very quickly to the Sandwich Terns then the Roseate Terns, and on to the gulls."

Wardens began patrolling the island twice a day in full hazmat gear to collect the carcasses. 110 Roseate Tern chicks were lost, a

devastating number for such a fragile population. 150 breeding pairs were counted last year; 79 of the adults have now died. And for the Sandwich Terns the season has been a disaster, with all 2608 chicks having died.

"I hope we are over the peak now, but the damage has been done. This has set us back 20 years," said Paul. "But preparedness starts now. We are disinfecting nesting areas and removing the shingle, trying to prepare the island for next year."

The RSPB is calling for an immediate response plan

from the UK governments on the HPAI virus in wild birds, including a co-ordinated action plan and clarity on the process for collecting, surveillance and testing of dead birds.

Paul said "We need a more rapid collection system for wild birds. It took a week for us to get confirmation from DEFRA that it was avian flu. And we had to take the samples to a lab [80 miles away] ourselves. The disease has spread right around the country and we need to have a plan so we can all respond very quickly."

One piece of good news for the Roseate Terns: Rockabill off the south coast of Ireland, which also has a colony, has so far not been hit by the virus.

Members of the public are asked to contact DEFRA on 03459 335577 to report groups of three or more dead seabirds. Do not touch the birds and please keep dogs away from them. For removal of dead birds, contact Northumberland County Council on 0345 600640.

The RSPB has set up a donation page: www.rspb.org.uk/join-and-donate/donate/appeals/avian-flu-emergency-appeal/

Anna Williams



Left: These photos were taken two weeks apart: avian flu has taken a devastating toll on the Sandwich Terns on Coquet Island.

Above: Warden Ibrahim Alfarwi counting the number of dead birds
Photos by Coquet Island team, RSPB/ITV

Styles by Helena wins best salon



Congratulations to Styles by Helena who won Best Hair Salon in the Tyne and Wear area at the England Business Awards 2022. The ceremony was held in July at the Crowne Plaza hotel in Newcastle.

Helena told The Ambler "I'd like to say a big thank you to all of our lovely clients and also how proud I am of my staff; Natalie Henderson, Christie Boyd and Maddison McKay. Without them this award would not have been possible. And last of all, a massive thank you to my husband Kevin Brown for all the support."

Photo: l-r Maddison McKay Kevin Brown, Helena Allan and Natalie Henderson

Ukraine group fundraising success

A fundraising event for Warkworth Ukraine Support Group held at the Warkworth URC hall on 18 June has been a tremendous success.

Norma Arthur, from Amble Pin Cushion, initially proposed the idea of an event using crafts and music to bring people of different backgrounds and generations together.

She wanted to share Northumbrian culture and hopefully, learn about the cultures of people from other parts of the world.

major fundraiser for the group, making in the region of £1800. This money will be used to support local Ukrainian refugees, of which there is a surprisingly large number: approximately 17 families in our catchment area.

Initially, funding has been used to meet needs which cannot be supported elsewhere e.g. purchase of school uniforms, travel to job centres and medical appointments, language training resources, and some cultural and educational activities.

"I would like to thank



The event was publicised widely, not only with the usual posters and flyers, but with a social media campaign following "The Adventures of Volo, the Ukrainian Bear" who journeyed from Amble to the event with his friends Bramble the Amble Bear, and Percy the Polar Bear, over a two week period. All the pictures from their journey are on the Amble Pin Cushion Facebook page.

The event also turned into a

everyone who supported the event with donations of cakes, silent auction and raffle prizes, and to everyone who entertained, and who helped out on stalls, making and serving refreshments, as well as all those who came along and supported the event very generously," said Norma.

"It really ended up about being about so much more than the money - it was about our community."

Bird sculpture trail begins construction



Above: l-r Fabricator Chris Taylor with artists Aether and Hemera
Middle: Murmuration by Amble artist Frances Anderson will be placed near the East cemetery; Below: Sphere

Groundwork has begun on some of the Bord Waalk bird sculptures. The first piece is Bird Song, by Aether and Hemera, two artists from Italy. Their piece reflects the soundwaves made by birds singing and was created after a visit to Amble in February 2020.

Further along the Braid, next to the Shorebase Trust will be Sphere, from Scottish artist Rob Mulholland. This steel lattice of bird forms was inspired by Rob's visit to Amble just before the Covid lockdown.

The trail will consist of twelve physical sculptures and an app which allows people to listen to specially created poetry, birdsong, soundscapes and music. There will also be information about each sculpture, and information on the birds and the local ecology.

Anna Williams



Action stations



Congratulations Shaun McKay and James Leighton who have now completed training to be part of the HM Coastguard Flood response team, which can be called upon to respond to major incidents anywhere in the country.

Over the last few weeks Amble Coastguard Rescue team have been busy attending numerous callouts ranging from assisting North East Ambulance Service NHS Foundation Trust with medical emergencies along the coast, to water incidents with people in difficulty in the sea.

The team has also been busy with training and with educational visits to local schools.

As always, if you get in trouble or see someone else in difficulty at the coast call 999 and ask for the Coastguard immediately!

PCSO Darin Fawcett and PCSO Samantha Brierley recently spoke to youngsters at Amble First School.

Darin said "Samantha was a pupil at Amble First school when I first started in Amble as a Police Community Support Officer. She remembered me talking to the children about road safety issues. That was about seventeen years ago.

"Now she's a PCSO in Morpeth and today she came out to her old school with me to talk about the same subject."

Back to School



With PCSO Darin and PCSO Samantha are Amble First school pupils: Liaera, Buddy, Jorgi

Future looks fun with Youth Project



Above: Amble Youth Project were recently gifted a cheque of £543.50 from Amble Links Holiday Park.

Amble Youth Project welcomes Tina Gibbinson, their new Delivery Manager. Tina lives in Amble so hopes to see you in town or at the AYP building on Dilston Terrace.

She has been working in the field of Youth and Community since 1998 and her passion is seeing young people grow and thrive into independent and confident young adults. Amble Youth Project has been going for 26 years and we would like to continue to grow and thrive too! You will see Tina and her team out and about on Friday evenings in Amble - Streetbased Youth Work here we come.

We have had Angelina Morrison a Year 12 Student on work experience with us. Angelina is studying Health and Social Care

Level 3 at JCSC and would like to train to become a social worker.

We also have a free fun packed, Summer Activities program from August 2 - 25. (Children aged 8-13 welcome) We have lots activities to offer, climbing wall, water sports, multi-sports, arts and crafts and trips out.

Please contact us via Facebook: Amble Youth Project Appeals for a registration and consent form. Or ring Gary on 07449839483

Please check out our website for up-and-coming senior projects and groups (13 to 18 years old) ambleyouthproject.org

Call for more information on 01665 713741 or contact Tina on 07488984053.

THE MAD JAM WOMAN & Pride of Northumbria



Award winning Preserves & Relishes

Fourways One
Bridge St, Amble NE65 0DR
07766 857680

Also available at the Seafood Centre
www.madjamwoman.com

edie pebble

Pod 14 Amble Harbour Village



Beautiful handmade gifts, vintage treasures and nautical decorations

TELEPHONE ORDERS WELCOME
01665 710 442
MONDAY TO SATURDAY: 11.30AM-9.00PM SUNDAYS: 11.30AM-2.30PM
***** NORTHUMBERLAND COUNTY COUNCIL
1 BROOMHILL STREET AMBLE NORTHUMBERLAND NE65 0AN

Make it look pretty again!
Maintenance and Design
- weeding
- grass cutting, edging
- planting, flower potting
- hedge trimming
- pruning
- landscaping
- paving, fencing
STANTON
Coast & Country Garden Service
01665 798543 AMBLE Visit us on Facebook

Stone trail update



In case people are wondering what happened to all the hundreds of painted stones placed at the Little Shore during the start of the pandemic, by local children, adults and visitors, here is the story..

A small group of volunteers collected the stones when the weather started to fade some of the paintings. Jacqui and I then spent the next six months varnishing them.

We have now reached the last stage of securing the stones in a permanent spot around the Town Square. Our building partner, Peter, has estimated the cost of materials for a pair of timber strips either side of the existing grass path, concrete and special mortar to be £350.

We will need digging equipment to dig the narrow trenches for the concrete, and we need volunteers to help place the stones in the concrete. So, a band of willing workers to volunteer their time, materials and equipment could enable this long-drawn-out project to come to fruition hopefully before September. Volunteers need to be physically fit, and tradespeople would be ideal.

We have a fuller list of what is needed to be done should anyone wish to help. Contact: the Ambler via email: editor@theambler.co.uk

A big thank you to our current donors:
J Young – varnish; Harbour Commissioners and Amble Boat Yard - stone storage; Amble Town Council – donation; Amble Development Trust – town square location.

Stone trail volunteer community team: Beth, Jacqui Jones, Kate Morrison, Peter Sample and Stephen Lunn

Kate Morrison

Community orchard makes progress

Further progress is being made on the development of Amble's Community Orchard to be located in the Welfare near the children's play area. A layout plan was agreed within the team. This will achieve what is contained within the remit and takes into account the existing layout of the area to be planted. The brief included a productive orchard with a variety of fruits

that would thrive in local conditions and a pleasant seating area in a well maintained and visually appealing walk through area. Space is to be provided for memorial trees, dedicated to loved ones.

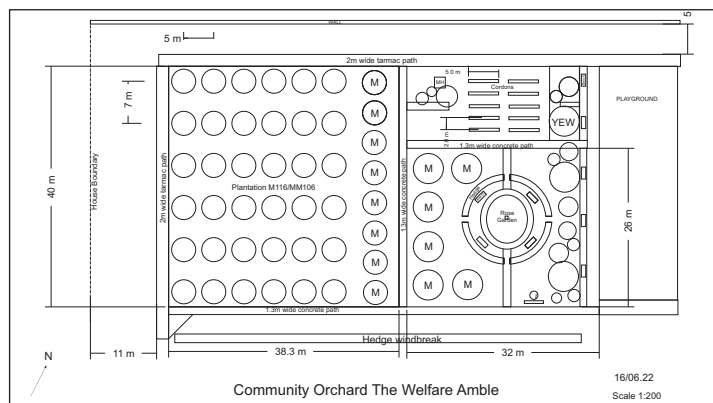
The clusters of existing trees and large shrubs are to be maintained and added to, to provide shelter. More seating to the side of the children's play

area is to be provided. The old rose garden will be rejuvenated with the addition of a circular yew hedge to provide a sheltered seating area overlooking a central bed of roses that will provide colourful blooms. To the side of this, and along the central path, there will be 14 memorial trees. The main orchard area of 36 trees is arranged in avenues to ensure access for maintaining the trees and mowing. This leaves a place for ten cordon fences, sufficient for 40 trees on the northern side of the rose garden.

A long windbreak hedge of mixed bird friendly species and alder trees will be planted to protect the orchard from the prevailing wind.

Finally, an information board will be included to give details of the varieties of fruit trees and their location.

Mike Myers



Sunday July 3 saw our first Mauretania Day since the Covid lockdowns. It was an immensely enjoyable day with Jayess Newbiggin Brass Band, Silver Wind Band, Tribe Zuza and our Harbour Lights Choir singing their hearts out.

The Morgan Car Club were our big attraction, displaying their classic cars, which attracted many of the onlookers. The weather was extremely favourable too and the event was enjoyed by all who attended.

Bart Rippon, Amble Harbour Village co-ordinator

An immensely enjoyable day



Celebration for league winners FC Amble Juniors



As manager of FC Amble Juniors Under 14s, I'd like to say a big thank you to Spurreli ice-cream parlour for their continued sponsorship support. It's great to have a local business behind us as it's this kind of support that keeps us going forward.

This season we managed a 100% home record, annihilating a few teams on the way, and went on to be crowned league winners with a fitting Premier League style celebration. As a thank you we've presented Spurreli with a framed team photo with our trophy to go proudly on display in the parlour.

Ian Armstrong

Health walk volunteers wanted

Active Northumberland is looking for volunteers to help support its popular weekly health walks. As a volunteer walk leader you will help to plan routes and accompany the walkers, making sure everyone is safe and nobody gets left behind.

No qualifications are needed – you will be fully trained. All that is asked is that you have a reasonable level of fitness, a love of the outdoors and a friendly personality. Email gbaister@activenorthumberland.org.uk

The Mind and Sole group have a 1-1.5mile walk every Friday. Meet at 10.30am at the bus stop outside Amble Health Centre.

Springwatch at Hauxley



Northumberland Wildlife Trust is delighted with the success of BBC Springwatch on its Hauxley reserve.

Over four nights in June, part of this award-winning programme was broadcast live from the wildlife charity's 26 hectare reserve at Druridge Bay as part of its three-week road trip with presenter Megan McCubbin.

The live programmes were interspersed with pre-recorded films of wildlife in the Druridge Bay area. These included Roseate Terns and puffins on Coquet Island, the Hauxley reserve's duckling Shelducks, and Red Squirrels, none of which disappointed in front of the

Springwatch cameras. All this highlighted the beauty of the Northumberland coastline.

Mike Pratt, Northumberland Wildlife Trust Chief Executive said "It's been an absolute pleasure and honour to have hosted Springwatch and the brilliant Megan McCubbin at our Hauxley reserve. The BBC team

Megan McCubbin broadcasting, while Coquet Island wardens watch in real time.

Photos: (above) Eloisa Noble, (below) Ibrahim Alfarwi

worked tirelessly to show how inspiring the site and its wildlife are. In fact, it has been so good, we are sorry they have to leave us and hope they return at another time.

"It's been particularly great having Megan here as she is so connected to the coastal wildlife she loves and is such a brilliant advocate for nature and young people's involvement in all things natural."

The Springwatch series is available on iplayer.



Increase in deliberate fire setting

Northumberland Fire and Rescue has seen a spike in deliberate fire setting this year and is asking parents to speak to their children about the dangers of outdoor fires.

So far the service has attended 37 incidents of this kind with burning rubbish and undergrowth being the most common.

Graeme Wright from the Community Safety Team said, "If crews have been called out to a deliberate woodland fire, they can't respond to another emergency."

The service also runs a bespoke education programme called 'Extinguish'; a fire awareness programme designed to support and educate young people up to the age of 18. Further details can be found on www.northumberlandfireandrescue.gov.uk.

The fire service is working with Northumbria Police, community partners and neighbouring fire and rescue services to help reduce incidents of outdoor fires.



**ICAEW
CHARTERED
ACCOUNTANTS**



ARE YOU LOOKING FOR A PROMPT & PROFESSIONAL ACCOUNTANT?

TIDY CLOUD ACCOUNTING ARE HERE TO HELP

We are ICAEW Chartered Accountants based in the Amble area.



**CONTACT MATTHEW SPEARS TODAY
TO ARRANGE YOUR FREE CONSULTATION!**

07596 926 740
hello@tidycloud.co.uk
www.tidycloud.co.uk





The Ambler

Fourways 2
6 Dilston Terrace
Northumberland NE65 0DT
Tel: 01665 712929
www.theambler.co.uk
editor@theambler.co.uk
Facebook: TheAmbler
Twitter: AmbleByTheSea
YouTube: AnnaAtTheAmbler



Editorial Team:

Vivienne Dalgliesh
Chris Herzberg
Norma Hinson
Ian MacKarill

Editor: Anna Williams

Thanks to:

Mark Beswick & The Artograffi Crew

Distribution:

Charlotte, Wendy,
Rachel, Lorraine

Printing:

CBS World, Alnwick

Would you like to join
The Ambler team? We are a friendly
group who welcome contributions
and help from anyone who would
like to volunteer.

Thanks to all our contributors, sponsors and advertisers:

NCC Community Chest

Rotary Club of
Amble and Warkworth

Inner Wheel Club of
Amble and Warkworth



The Ambler is a proud member of
the Independent Community News
Network

The Ambler is a project of
Amble Development Trust



The Ambler is printed six times per
year. The views expressed in *The
Ambler* and *The Ambler Online* are
not necessarily those of
the Editorial Team

2022 Submissions dates:

#132 - 7 Jan	#135 - 1 Jul
#133 - 1 Mar	#136 - 2 Sep
#134 - 22 Apr	#137 - 4 Nov

Thank you for your kind comments

We've had so many letters in recent issues,
there's been no room for a message from the
editorial team.

We've received so many lovely comments about
the last few issues, thank you. By the way has
anyone noticed we're now in full colour throughout?

Now we can offer more colour advertising
space, and local businesses have responded to that
opportunity. As ever, The Ambler is the best means
of getting informative, trustworthy and useful
information to the good folks of the Friendliest Port,
so if you have something to promote - get in touch!

WHAT YOU SAY...

>> more letters on p8 and p14

Why it's 'not possible' to cancel planning permission

In response to *Issue #134*
Page 7 Amble set for over 1100
more houses than Local Plan says
we need:

Housing numbers for
towns in Northumberland
have never been a requirement,
and there has been no means
of preventing properly made
applications for housing in
excess of suggested numbers.

If there was no demand
and houses did not sell, then
one would imagine developers
would not build them.

The new local plan should
enable the planners to exert
more control than they had
before, the application for the
houses on the North Bank of
the Braid will be subject to
the new plan and has not been
approved yet.

It simply is not possible
to cancel planning permission
already given to developers.

Current developments have
to have 15% of the houses
built as affordable homes and

in the case of the development
at Longstone Manor; it's much
higher at approximately 40%.
Infrastructure plans are
underway with car parking and
school improvements coming.

The reference to 20%
holiday home figure in Trust
Life is of course correct but we
have no figures that supports
that this has been exceeded nor
in my opinion will we get them.
Although a few of the recently
built homes are second homes
the vast majority are not, and
this makes the 20% figure less
probable. The holiday homes
are mainly clustered around the
harbour.

There is no legislation, and I
would not think it is ever likely
that rules would ever prevent
owners of properties converting
or selling existing homes as
holiday lets.

There are many new homes
in Amble that people who are
now residents enjoy and make
a significant contribution to

the town and its economy.
If it was not for them then I
doubt we would have our new
supermarket and hotel and the
vibrant café/restaurant life that
employs so many people and
is so essential to the continued
prosperity of the town.

Amble is a different place
to what it was, its reliance on
coal has gone and unfortunately,
fishing has declined as an
employer, it is now finding
a new role with industrial
companies and a destination
point for tourism and its
associated facilities.

I have noticed that
increasingly it is becoming
attractive to retired people
wishing to move away from
city life.

We say visitors are always
welcome at the "Friendliest
Port" and I would hate to think
that would ever change.

Jeff Watson (Cllr)
via email

Mauretania inspires art



I just found your Facebook
link to Mauretania day! We
were fortunate to be staying in
Amble during Mauritania day
in 2019 and as an artist I was
later inspired to create a collage
from postage stamps! This was
finally completed during the
pandemic lockdown!

You can see the Mauretania

on my website www.
rachelmarkwick.co.uk On the
Ships page! I hope you like it.
Coquet Island and the puffins
are featured too!

We loved Amble and we
certainly found the town very
friendly and welcoming!
Rachel Markwick
via email

Water feature fail

I often walk by Amble Paddlers
and never see small children
playing on the stone water
feature. It looks in disrepair
as the water pump is missing
components and no water runs
down the channels.

I have taken my small
grandchildren there but it is not
a safe place to play and I have to
constantly hold their hands on the
uneven surfaces.

Does any other local person
think it is a total waste of money,
serves no function whatsoever
and the area would be better
served by replacing it with a
water splash park like those in
Ashington, Blyth and Morpeth?

I am sure if there were a
safe splash water park more
local families and holidaymakers
with younger children would
frequently use it.

A lifelong Amble resident
via email

See also p16

Puffin Festival: a wonderful weekend



Organisers of Amble Puffin Festival were delighted at the turnout and reception, as the weekend brought sun, fun and several exceptionally large bird characters to town.

"It was a wonderful weekend. There were great displays, great shows," said Chair of the Amble Event Committee Bart Rippon. "The stilts were really good, and the giant seagulls were brilliant. The weather stayed fine for both days, the music was excellent and we had a fitting end to the festival with sea shanties from the Auckland Shanty Singers."

The festival provided an eclectic mix of local interest, nature walks and history talks as well as arts and crafts over the half term holiday.

The main festival took place in the Town Square which filled with entertainers and musicians from far and wide. And dog owners were delighted to see the return of the dog show.

The live puffin feed from Coquet Island was very popular, and Captain Coquet, aka Paul Morrison, RSPB Coquet Island warden, was inundated with questions about puffins and Roseate Terns.

Live music filled the Town Square and the performers brought smiles to the crowds. Stilt walkers dressed as fabulous birds carrying exotic people on their backs, while giant seagulls brought huge laughs as they teased unsuspecting passers-by.

On the Sunday, aerial artists Bare Toed Dance Company drew huge applause from the audience as they span on a hoop suspended in the amphitheatre.

And of course, ever-popular giant puffin Tommy Noddy was a decided hit with the younger visitors.

After two years of pandemic restrictions, the return of the quirky festival was an opportunity for people to enjoy themselves, and celebrate the return of the puffins on Coquet Island.

Another draw this year was information on the Bord Waalk sculpture trail.

Anna Williams

Clockwise above: Neighbourhood Stilts, Bare Toed aerial dancers, Puffin painting winners from Amble Links First school and Amble First school



Coquet Tea Rooms & Gift Shop

51-53 Queen Street, Amble NE65 0DA
 01665 712964 07876404093
coquettearooms@gmail.com

NEW Breakfast menu
 including take away



**Upstairs
function
room**

Take away menu

Open: 9am-4pm Mon-Sat; 10am-4pm Sun

Eat In / Take Out / Catering / Function Room

WILLIAM PURVES

EST. 1888
FUNERAL DIRECTORS

Compassion.
Dedication.
Integrity.
Respect.

Our promise to you.

William Purves in

Amble

01665 712 277

Alnwick

01665 510 699

williampurves.co.uk

A fond farewell to a friend



The Ambler team were extremely sad at the death of our long time friend and colleague Cath Findlay.

Cath joined the Ambler in 2008 and remained a regular volunteer until earlier this year. She edited articles, deciphered handwriting, took photos, and

updated the website, all with her calm, gentle good humour.

Cath was one of the Ambler editorial team who met Prince Charles when he visited Amble in 2012. Three years later, she represented the Ambler at the Duchess of Northumberland's Garden party. And in 2016 Cath was one of our photo team covering the Countess of Wessex' visit.

Cath was a lovely gracious fair minded lady who loved her family and her community. She has been a valued and much loved colleague. We will miss her greatly, and we send our condolences to her family and friends.



Cath and her granddaughters, at her wedding to Graham Findlay, 2016

Hosting summer visitors

For the second year, our home has hosted a family of swifts. These are very interesting birds and when a friend lent me an article about them, I was inspired to register my visitors. This led to a source of lots of other information.

Swifts have declined all across the UK, and are now on the Red list of Birds of Conservation Concern. They are struggling to find places to nest.

But all is not lost I discovered that Northumberland County Council now routinely requires

to incorporate features to benefit biodiversity in new developments.

Swifts need a good supply of flying insects to feed on. New developments will include landscaping, green space and features such as the swales and basins used to manage drainage on the site. The design and management of these and the species chosen to plant and sow in them will influence their value for invertebrates, including the species that form the food supply for insectivorous birds such as swifts.



Composite image of swifts by Vivienne Dalglish

developers to incorporate features such as swift bricks in new developments, and one of the objectives of the planning system is to contribute to protecting and enhancing the natural environment requiring local planning authorities to seek opportunities

So all these new builds should also be providing accommodation and encouraging avian visitors to the Friendliest Port. Let's hope these new swift bricks find tenants soon.

Vivienne Dalglish

WHAT YOU SAY...

>> More letters on p6 and p14

Vanishing wildlife habitats

June has been quite a disastrous month for nature in Amble. First of all Morrisons wild flower meadows next to their car park, have for the second year running been mown just as several species were starting to flower. Viper's Bugloss, Red Campion, Ragged Robin, Great Burnet and Red Clover were mown out of

existence leaving a few patches of White Clover. A small colony of Scarlet Pimpernel on the edge of the car park were sprayed with herbicide and have now disappeared.

Later a private firm of tree surgeons removed a grove of nine perfectly healthy whitebeams next to Unit 16A on the Coquet Industrial Estate. These trees provided berries and roosts for a good number of birds. Why were they destroyed so needlessly?

It is quite ironic that while a sculpture trail dedicated to birds is about to be installed on the coast perfectly good habitat for birds and insects is being destroyed elsewhere in Amble.

On the plus side, I recently discovered a small colony of orchids also on the industrial estate but am now concerned that these too might soon be wiped out.

Hugh Tindle
Via email



Orchid on Amble's Industrial Estate

Access to communal land

I am writing to ask if you could publish this letter as Homes for Northumberland (HFN) are letting its tenants down.

A neighbour who lives in a private house has cut a gate in their boundary fence so they can go through the grassed area in front of our front door.

I would call it our garden, as would everyone who lives in a

council house. However, HFN said: it is communal land, free for all to use. So if you have the council cut your grass, even if it's fenced off with a gate and a path outside its still communal land.

G and S Moore-Roberts
Philip Drive

This letter has been edited

The Ambler contacted Northumberland County Council for clarification of the land use. A spokesperson said:

"On Philip Drive there is a communal grassed area to the front and the rear of the bungalows which the council owns and maintains. The land does not belong to the bungalows.

Many years ago a gate was put into the perimeter fence which surrounds an adjacent private property. The council does not own the fence, or the gate and as no authority over it

The neighbour occasionally uses the gate for access through to Philip Drive, however after discussions she has agreed to stop using it to prevent any further upset to her neighbour."

Ukraine appeal

I would like to thank everyone that gave for the Ukraine appeal which included lots of clothing, toiletries, toys, and £780 in cash. We are still collecting and fundraising, so if people would like to continue to

help, they are welcome to ring me on 01665 710842.

Mary McNally
On behalf of Amble Churches
Together

Remembering Jimmy Thompson

Readers will no doubt be sad to hear of the death of Jimmy Thompson, one of Amble's most popular artists. The Ambler spoke to his son Iain and two of his sisters, Helen and Christine.

Jim was born at Chevington Drift in June 1944, one of nine children. "He was christened James Edward Thompson. Wor Jim to his family and wife, but Jimmy to everyone else," said Helen.

His father worked at the pit, but after leaving school and a stint working at Link House Farm, Jimmy became a fisherman, first on trawler the Green Plover then Ocean Vanguard, where he met Barry Davison (Barney). The pair decided to get their own coble; Alliance A then Alliance B, both built at Harrison's boat yard.

"Jim was left-handed, hated school but showed talent in art early on," said Christine. "I remember him painting in oils on hardboard sheets balanced on the back legs of an upturned kitchen chair! He was self-taught as far as I know. We still have

some of his early works copied from a 'Teach yourself to Paint' book."

"He didn't say much but if he told you off you took it to heart and if he praised you, it felt great," said Helen.

Jim married Rita in 1975. Rita was from Hebburn but was a regular visitor to Amble caravans. They had two children, Wendy and Iain.

Seascapes and fishing boats were Jimmy's main subjects, but he loved animals too. "I think it was because he always took his camera on the boat with him, and he would mainly take pictures of Coquet Island, or boats etc. but he always had a love for wildlife, dogs and horses," said Iain. "Mainly I would say he just loved painting."

Helen said "When he retired if he wasn't spending time with family or painting, he'd be walking the legs off one of his many dogs, helping his brothers with their fishing, picking and stockpiling sea coal and driftwood (became a bit of an obsession), or scouring car

boots for the next Hoover or lawnmower that needed a bit of a tweak."

After retiring, Jimmy began painting more often, and commissions flew in. Iain said "He has paintings all over the world. People came from Australia, New Zealand, Japan, America and South Africa that

I know. Mainly local people who moved away, but when they returned they had orders from their friends who wanted paintings of their dogs, boats or scenery."

"He was a family man through and through" said Iain, remembering that his dad was especially happy to take and collect granddaughter Chloe from school, and together they would sit and paint.



And latterly, when his wife Rita was ill, despite having liver cancer himself, Jimmy cared for her until she moved to a nursing home in Blyth.

"It seems my dad had held on as long as possible looking after my mam, as it was only a matter of weeks later, when he himself needed to be cared for by family."

He leaves a wife, two children, five grandchildren and six siblings.

CBSWorld

Complete Business Supplies



Printing Services

Leaflets • Booklets • Books • Newsletters • Posters
Carbonless sets and books • Fine art prints • Invites
PVC Banners • Foamex boards • Signage

www.cbsworld.co.uk

Unit 5 Elm Square, Lionheart Enterprise Park
Alnwick, Northumberland NE66 2ES
Tel: 01665 660022 Email: sales@cbsworld.co.uk





 Blood Pressure Checks	 Vaccinations	 Allergy Treatments	 Hair Loss Treatments
 Erectile Dysfunction Treatments	 Period Delay	 Travel Vaccinations	 Weight Management
 Migraine Treatments	 Contraception	 Smoking Cessation	 Podiatrist

and treatments not routinely offered by the NHS
To discuss any of our services in private, speak to a pharmacist

Visit our website for more information:
www.cromiepharmacy.co.uk
info@cromiepharmacy.co.uk | 01665 710 896
158 Percy St, Amble, Morpeth, NE65 0AG



Thinking about a career..?

How about... marine biology?

We were very pleased to meet Celia Fery, a marine biologist who agreed to tell us all about what that involves.

Celia is a marine biologist from France. She came to the UK to improve her English so she could go to more places and save more wildlife in the ocean. Originally she wanted to be a vet but she explained to us, becoming a vet is hard in France and she didn't get the grades she needed at school.



Above: Hannah, Celia and Grace

Celia comes from the east of France in an area known as Lorraine, where she went to school, specialising in environmental subjects. She moved to La Rochelle in the south, where she got her degree in Marine Biology, and learned about marine mammals, marine birds and oceanography.

Celia first came to Amble seven years ago. She explained why. "My English was very bad so in 2015 I came to Northumberland, to be an au pair near Amble for a year." This is when she made lots of friends in the town and even helped out on The Ambler.

In 2016 she moved back to France, to Montpellier to do her master's degree in ecology, mostly studying marine ecology. Then later, she moved to Greece to study Dolphins. Since then, she has worked in many places in France. Her latest job included interviewing fishermen about the bird life they encounter while out fishing. She also says that anybody who has an interest in marine life / biology should invest towards a career in marine biology because she says marine biology is the future because you can make the world better.

She also said, "Marine biology is a hard career. There are many people, but few opportunities. the pay is poor. You do this work by passion, because you want to protect. I would encourage people to do it, but they need to be realistic. For example, it's almost impossible to work only with dolphins."

Celia's future plans include more travel, perhaps to volunteer in South America, Costa Rica, Mexico, or Cape Verde. Ultimately she wants to live on the Atlantic coast.

In addition, she says "I want to make people happy and be useful in life."
By Hannah

Or what about... a military career?

At cadets, we do army training. Sometimes we even get to meet proper soldiers when we go on camps at places like Otterburn. My favourite part about it is shooting and I would say I am good at it as well. We often go on ranges to practice our shooting if we were ever to become snipers or something in the military. I am pretty good. I once got a (less than) 10mm group size, that basically just mean how close together the shots are, and that's pretty good. The targets are a series of rings on a piece of paper usually A5. The target is about 5 – 10 meters away from the shooter. I came top of my group. I might pursue shooting in the military as a career.

The camps and parades are very good as well. I went on a parade in Berwick a few weeks ago (my first one) and it was very good. The camps are also great. My favourite are the field craft ones. Field craft is basically just sleeping out in the field and learning how to survive out in the wild with minimal stuff. I don't enjoy this that much.
By Hannah



IS THIS SHEIN'S REDEMPTION?



Shein: the fast fashion monster. They aren't the only ones to blame, but they are well known for their quick trends, low quality, and huge waste. As a whole the fashion industry creates approximately 92 million tonnes of waste annually, and this figure keeps growing, aided by the rise in fast fashion brands such as Shein, H&M, Pretty Little Thing, and many more. It has become trendy to spend hundreds of pounds on hauls of cheap clothing, only for the clothes to be thrown away after a few wears. However, these fast fashion brands are not alone, as many luxury brands (for example Burberry) have also been caught with large amounts of waste.

Recently, Shein took a step in reducing

the impact of their waste, by pledging £12 million to the Or Foundation and a further £28 million to other programmes. This will reduce their waste by transforming them into new products, a good step as there are very few landfills or incinerators, so most of the waste goes into the environment, polluting seas and wild habitats. This will also improve working conditions, specifically in Ghana; this is significant because there are many people, including children, working in difficult conditions for a criminally low wage.

However, there are many people questioning whether this move is genuine, or an attempt at greenwashing. With Shein's value of over £80 billion, they could easily spare more money to help more programmes, reaching to improving

conditions for production workers too, and becoming carbon neutral. Additionally, they need to address the overproduction and quality of their products that leads to such an excess in waste, and the robbery of ideas and designs from small businesses (a huge problem in itself).

Overall, I think there is much, much more work that needs to be done to create a better fashion industry, and Shein needs to address all of the problems they cause. Despite this, making such a public promise may encourage other businesses to do the same, therefore it is an important step. Sustainable fashion is not always accessible, but please be conscious of your contributions and do your bit to save the world!
By Ava



Top 5 reasons why YOU should join Artograffi!

We are looking for new people to help write articles, draw pictures, and all that jazz. Here's why you should be one of us.

Reason number 1:

You can let people know about what's going on in the world – if it's happening in Amble, or maybe on the other side of the world in Australia, we don't mind! Whatever is happening, you could write an article about it so everyone in Amble can read about it.

Reason number 2:

You can help spread interesting facts and other cool stuff! And what you write actually gets read by people. It's actually quite fun writing things and they don't just have to be articles – we want your opinions on what matters to young people, or you can write stories too, like I did with Ozzy the golden retriever. Remember him?

Reason number 3:

Juice and biscuits. This reason is self-explanatory.

Reason number 4:

If you find you're ever bored on a Monday 5pm-6.30pm, you will have something fun to do! So if you feel like you want to do something after school, give Artograffi a go. It's nice and quiet if you don't like sporty after school clubs, but everyone is very friendly.

Reason number 5:

Don't worry – we don't just write articles ALL THE TIME. We also do parties at holidays like Halloween or Christmas, where we decorate gingerbread men and play party games.

So if you are aged 9-18 why not join today? Contact Anna by email (editor@theambler.co.uk) or on Facebook if you're interested.

By Grace

Waffling, walking and wonky houses



I had a very busy half term holiday. First, I did pretty much nothing, but then I went to Amsterdam with my family on a ferry. It was a fun ride, apart from the fact that the cabin was excessively hot. You would think that if you were in the middle of the ocean it would be relatively cold. But no. I would always end up sweating and never sleep with the blanket on at night or I would most likely wake up completely drenched. It was worth it though, as I finally got off the big boat and was in the Netherlands. We did some passport check stuff, and got on a bus ride towards the country's capital - Amsterdam.

I remember I got a very nice, very large waffle covered in chocolate with whipped cream, strawberries and KitKat. It was worth remembering as well, since it was THE BEST WAFFLE I HAVE EVER TASTED. It was very nice



The best waffle

and filling. A lot of walking later, I saw something I found extremely annoying – wonky houses. Houses that were tilting to the side instead of being straight. I know they are old, but I would hate to wake up every single day and see a house leaning slightly to the side every day. It was cool apart from that. My legs kind of hurt from walking around for AGES but it was worth the Amsterdam style McDonald's I had.
By Grace



Ava in the dress they made for prom

But how do you *FIGHT* fast fashion?

The most important thing is consumption and the reusing of products. For example, instead of buying a prom dress that will only be worn once before it is thrown out, I made my own using partially secondhand materials (old curtains from a charity shop).

Obviously this is not possible for everyone, but just proof that there are sustainable options available with creativity and patience.

Knitting's not for nannas



We all know the knitting stereotypes- apparently it's only for grandmas in rocking chairs sitting on their front patio. While we love the knitting grandmas, there's also been a trend towards young people like us taking up the hobby, and it is definitely something worth doing. Here's why you should become a knitter!

1- You get to create cool things to keep and wear, making things that fit your fashion sense, not just what's in the shops. Have you ever found the dream jumper then seen that it's out of stock or way too expensive? Just make your own! It's not just for winter too- knitted vests can be even easier to make than jumpers and cardigans.

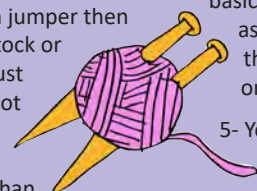
2- Knitting is very good for your mental health. It's a form of mindfulness with the repetitive movement of each stitch (although it might not seem like it to start

with when you get angry at a couple of dropped stitches!).

3- It's so satisfying to have completed something. It might take a few hours or it might take a few months, but once you've finished your knitting project you'll feel a huge sense of achievement. You can look at your knitted item and know that you made it yourself!

4- Knitting is quite easy to do. Even though it might seem daunting at first, you'll quickly get the hang of it. There's lots of helpful videos on YouTube which will show you the basics, like casting on your wool, as well as the more difficult things you might find later on.

5- You get to be as creative as you want, which means it's a great way to bust boredom. There's so many free knitting patterns online that you could use as inspiration, or you could go crazy and knit something completely on your own- it's up to you!
By Lily



Fly high, Amble's spaceman

We recently learned of the death of Fred Taylor, Emeritus Professor and former Head of Atmospheric, Oceanic and Planetary Physics at Oxford University.

Fred was born in Amble but set his sights on the stars. Eventually working with NASA at their Jet Propulsion Laboratory, Fred and his team developed instrumentation for planetary atmospheric research and mapping, which was used on missions to Venus and Mars.

On returning to Oxford in 1980, Fred subsequently became Halley Professor of Physics and received many more academic accolades and titles. He wrote a dozen books on atmospheric physics and the planets in our solar system.

Fred was born in Lindisfarne Road, his father William (Bill) hailed from a Hauxley fishing family and had been a joiner working for Carse, but was badly injured during the war and for a time the main family breadwinner was Fred's mother Ena, who was a teacher. His Uncle Maurice ran the Co-op grocery on Queen Street.

When the family moved from Amble to Howick in 1949, Fred attended the Duke's school in Alnwick, leaving for University at Liverpool, and then on to Jesus College Oxford where his prestigious career really took off.

After his retirement, Fred began writing his memoir, and in 2012 he returned to Amble where he spoke to the Ambler about his life: You can read the story via our website/Back Issues (*Issue 78 p11*)



Prof Fred Taylor in Amble, 2012

Garden awards 2022

On 7 July the judge from Alnwick Gardens viewed gardens selected in all three wards of the town as well as some business and community areas. He expressed his admiration for those who had such colourful and varied plants and flowers looking so good. The winners and runner ups were presented with their awards on 14 July.

Civic Awards were presented to Vic Brown, recently retired from Coquet Shorebase, for her sterling work in encouraging everyone to enjoy watersports safely and bringing a variety of activities in which all ages can participate; Katrina Cassidy gained her award for her pastoral work with JCSC students and the promotion and expansion of Northumbria Army Cadets.

Do you know your St Jameses?

Saint James the Great, Sotherwise the brother of Jesus, died on a Spanish holiday, at Santiago in Spain. So what does he have to do with Amble? Nothing you say.... Scallops, I reply, loudly.

Local fishermen are still trying to sort out how to fish for scallops from Amble, around a thousand years after a King Henry moved from France and left them behind.

There was a pilgrimage to Santiago de Compostela, the legendary hometown of the Great St James, after he died. People used to go there, from all over Europe, including Amble. They were fed for free, during most to the journey, usually by local fishermen, on the masses of

scallops which infested the inshore waters of the Bay of Biscay. These had been given to the French, Spanish, and Portuguese by whichever Henry it was when he left France. Pilgrims from the monasteries here got their scallops from the North Sea and possibly ate fresh Amble scallops every Friday, just to remind them of their trips to Spain.

The route did not need much navigation. Walk west until you can smell the scallops, and then ask for Santiago. A Spanish

holiday, fifteen hundred years before Easy Jet, was what you got for your pains.

And perhaps it was a person who had made the great pilgrimage, who called the football ground Saint James, after the Spanish town everyone travelled to, in hopes that Newcastle would become as popular. No-one there could tell me, when I asked, which St James the football ground commemorates. My money is on St James the Less but feel free to let me know how your part of the argument goes: 365 words: how to distinguish between saints of the same name (Part One).

There are at least two saints James: Saint James the Great, and Saint James, the Less. I do



Saint James the scallop

know that it is always a bit dodgy to decide which is which, because you end up explaining that some of the stories about James the Great are about James the Less, and vice versa.

One way to do it might be to stick two saints with the same name in a

whole complex trail of legend and adventure, and then call one of them The Great, and the other one The Less. I think this is what happened with Saint James, and Saint James.

Mat Curran

Harry McQuillen's

Age of insecurity

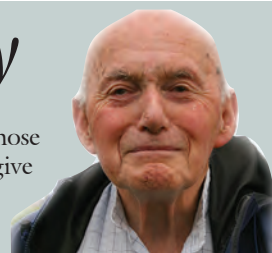
I'm not sure when I acquired the "Wobbles", but I know that I have them. For quite a while I've not been quite myself. The signs are clear – time wasting, reluctance to take or make decisions, even on trivial matters, irritability and becoming a "Wuss". I assumed that once I returned to my home patch my dithering would be over. Amazingly, and amusingly, it isn't. Everybody has been so kind and welcoming during my last couple of weeks here. The weather has been good to us all, which makes a difference. The main thing in our lives is the people who matter to us. The kindness of strangers is the glue that makes society.

So much has happened since

Covid reared its ugly head. We haven't been able to do so many of the things we like to do, although comparatively recent "Opening Up" phase has given a boost to most aspects of our lives. Amble is busier than ever, with the town and its businesses showing every sign of thriving. My usual reservations apply, the skewing of our local housing market in the direction of privately owned holiday lets. I'm reminded of the results of a local survey in the 1970's (Towards Tomorrow's Amble) forecasting the growth of the holiday trade and the decline of local industry. Now is the time to look into the future, although it isn't easy. Our economy may be in trouble,

whatever that means. We get up every morning, go to bed at night (most of us) and do stuff during the waking hours. "Just get on with it". Chaos may well be a perceived commodity. When we look back at the last couple of years, we see the hard lives that many of the "Left Behind" members of our society have come through. Mind you, it's easy to find news of people all over the world who really do need help. All we can do is reach out the hand of friendship, think positively, and do what we can. During my present brief stay in Amble I've had the privilege of seeing that help being given so freely to people from other parts of the world. Is it coincidence

that those who give so much of



themselves to others have profound religious beliefs? I've never regretted my lack of religious faith so much.

The tone of this entire article is a reinforcement of my insecurity theme. What we all need to do now is to look to the future with enthusiasm and hope.

Here's to better days ahead!

Harry

Glass artist makes her London debut

Northumbrian Glass Artist, Helen Grierson, made her London debut with the inclusion of her work in an exhibition marking the 25th Anniversary of the Contemporary Glass Society.

The exhibition, titled 'Earth/Sea/Sky', took place in the London Glass Blowing Gallery in Bermondsey and brought

together 50 of the UK's best glass artists.

Helen, who runs her glass studio out of the Old Bath House in Broomhill, was thrilled when she received the news that her piece had been selected for the prestigious exhibition.

Known for her bold and vivid depictions of the area's landscape and wildlife in both stained and fused glass, she has recently moved to making more personal, political work.

Her piece, titled 'Rose Rooted Triptych', draws on both feminist and ecological themes referencing the poetry of Nikita Gill and the ongoing climate crisis.

She said in relation to the piece that, "I explore the feminine and the connection to the earth. We are the earth and the earth is within us. We hide our power. We stay safe and cocooned within the earth but we must wilt, fall, root and rise in order to bloom and find a better way for us and the earth to go on and it will be the feminine that drives this."



Rose Rooted Triptych by Helen Grierson

Celebrating with the Queen



Residents of Priory Park braved the weather on Sunday 5 June with a fun filled street party which included bingo, "Ball in Bucket", a royal quiz and "Open the Box".

One couple, Mavis and Alan McCormack shared the day with their 57th wedding anniversary, they were presented with a card and a bouquet of flowers then danced in the street to the Anniversary Waltz.

It was a little windy but despite one of the gazebos taking to the sky, everyone had a great day.

Rod Hardisty

Expertise Wills and Wealth

PROTECT YOUR FAMILY ASSETS

Long Term Care • Third Party Challenges • Divorce
Business Failure • Sideways Disinheritance

LASTING POWER OF ATTORNEY in areas of
Property and Affairs • Health and Welfare
Make sure you have them in place while you're fit and healthy

WILLS Simple Wills • Trust Wills • Free Reviews

PROBATE Call us for Expert Help and Advice

PENSIONS Do you have pension pots scattered
here and there? Now coming up to retirement?
We're here to help you go through your options.

Ring Enid: 07772 182 130
for a **FREE CONSULTATION** in your home



Email: enid.eww@sky.com
Enid Wilson
Consultant
30 years of experience



URBANPOOCH

STYLISH LIVING FOR DOGS

Affordable luxury for the discerning pooch

We stock Ruffwear, Ruff & Tumble, air dried treats,
Eden, Herbal Pet Supplies and much more.



Pod 8, Amble Harbour Village, Leazes St. NE65 0FD
07772867289 www.urbanpoochboutique.com



Reports from our *County Councillors*



Road Markings

Around the town centre

and harbour area, we have highlighted road markings at junctions of the one-way system along Leazes Street. Also double yellow lines have been changed to zig-zag markings. This will now stop vehicles from parking near the harbour car park. Such parking was restricting drivers' views of oncoming traffic and needed changing.

Southmead Footpath No16 :

After raising this issue with two departments and several officers, I finally arranged a meeting with NCC Rights of Way Officer on site when the footpath is flooded. I explained the situation we have had over the last few years when torrential downpours come every winter and spring making this footpath impassable.

NCC have stated it cannot be left in this condition especially now we know it's

not Northumbrian Water's responsibility. We will need to look at a drainage design solution. This is likely to be a bit involved as clearly it's a low spot in the topography of the area.

Any solution will therefore need to be informed by a survey to determine levels and to identify a suitable outfall point which will also require easement across private land.

Technical Services are investigating potential drainage solutions with their design team and will keep me informed as they identify a scheme. After that we will have a better idea of the estimated cost and can look at funding options

Queen Street Lighting Columns:

Broken columns have been replaced and spruced up; all functioning and ready for the darker nights.

Enjoy your Summer.

Regards
Cllr Terry Clark Amble, Hauxley, and North Broomhill,

Terry.Clark@northumberland.gov.uk 07779 983768

The consultation on the future of our schools in the Coquet partnership is well underway. I understand we have had over 170 responses from interested parties. A live event was held to share ideas and some parents attended to give their views. The parents I have spoken to seem to be in favour of a two-tier system, but we shall have to wait to see the final outcome.

I get the impression that the James Calvert Spence College is doing well this year and that the results of the efforts of the school staff are coming to fruition.

I am working to ensure that any new design of the campus on Acklington Road include consideration of the sporting needs of Amble.

Our football teams are doing well but the parking of vehicles on Acklington Road from those people attending matches and other activities continues to cause safety concerns.

The new speed indicating sign will help as will the new road layout from the development next to Robsons Way. A 20mph area has been agreed and will be implemented shortly but I still think further work on solving the issues of this busy area is required.

Jeffrey.Watson@northumberland.gov.uk 07802 385367

A further two litter bins have been provided by NCC at the new mobile home parking bays at the Braid car park and a continuing monitoring of this area is taking place. As previously stated, the idea is for this trial to be assessed in early autumn with a view to its judging its effectiveness and suitability for future use.

The car park behind Tesco at Turner Street is nearly finished as I write this report and it should be fully open in early August. It will be free for the first hour, giving the opportunity for local shopping etc to take place and then a small charge will be payable.

It will be a great asset to the town and is the result of several years of lobbying by many people and organisations and I am sure the investment by NCC of well over a million and a half pounds will be justified.

The County Council is continuing to help families this summer and vouchers are being issued to assist with the school summer closures and loss of free school lunches. Enjoy the summer, it looks like a hot one!

WHAT YOU SAY...

<< More letters on p6 and p8

Ode to Amble

I travelled up to Amble
Five plus hours on the train
Looking forward to my holiday
And be travelling again

But on my arrival
No taxi could I see
Then Gary and his taxi
Did come and rescue me

The 'Masons Arms' was lovely
The people very kind
They had some 'karaoke'
But I did not mind

Amble is a lovely place
Lots of things to do
T'was the puffin festival time
So a cruise I did too

North and South along the coast
Made such lovely walks
Picking up some pebbles
Met people, had some talks

Warkworth Castle on my list
So much there to see
Then back to Amble Harbour
To enjoy a lovely tea

The weather was so very good
A joy to walk around
I hope to come back next year
So pleased, I Amble found.

*Christine Counsell
via email*

House numbers and second homes

The number of new build homes is out of control. All the arguments about controlling new build have been made but NCC seems hell bent on approving all new planning applications. I have asked Amble Town Council to convene a public meeting attended by Northumberland Council's Head of Planning to discuss why so many hundreds of housing applications have been passed far in excess of previous projections. If this meeting takes place, I will be proposing a resolution to put a complete stop to processing ANY new planning applications

here unless they are for much needed social housing. For example proposed luxury flats by the harbour will create problems such as noise, safety issues, and heavy vehicles right in the town centre which will prejudice Amble as a holiday destination.

Now onto the major problem of second homes and landlords choosing to let their properties for holiday lets, rather than for low-income local families. Such houses are empty for much of the year, destroying the character of our town.

Owners of such properties don't pay council tax but still get,

and expect, council facilities and services. Low-income families are priced out of renting or buying a home having to move in with their parents or living on trailer parks.

Any sense of neighbourhood is destroyed, as well as the impact of holiday homes on residential estates. The governments is belatedly addressing these issues. I would like to see all second homes registered for council tax and owners charged two or three times the requisite amount. I can only conclude second home buyers are thoughtless and selfish

and have no understanding of the impact of their second homes on small towns like Amble. Maybe if mortgage rates continue to rise and inflation increases still further holiday homeowners might have difficulty in paying their existing mortgages let alone hoovering up local houses as holiday homes. I hope so.

*John Bird,
Mariners View, Amble*

Ed: Readers may also be interested in Jeff Watson's letter on this subject, on p6



Controversy continues! It seems the Development Trust has caused a stir – not with housing but the fact that we have secured money for a sculpture trail. Now this has been well documented in The Ambler for over two years, but as some enterprising person has posted (relatively) negative comments on social media, one or two (yes as many as that) are saying the money could have been better spent on housing, the food bank and the town clock.

So let me put the record straight – firstly, the amount stated in those comments is incorrect. As I wrote when the money was granted, the full amount was £396k not half a million. Yes, it's a lot of money, but not the spurious figure mentioned.

Next, the funding was not for housing or any of the other worthy projects mentioned, it was to meet a specific criteria through the Coastal Communities Fund. We met the criteria and were successful.

Now art will always be divisive and subjective; what one person likes another may not. It does not mean either is wrong, it just comes down to individual taste. We had a steering group made up of community representatives who chose the final designs, so there is a mix of tastes included, and hopefully everyone will find pieces that they like. I would add that there is more involved than physical sculptures; there are commissioned poems, music and a mobile phone app as well.

Finally, the Development Trust is here to 'add benefit' to the town, and is not responsible for statutory elements such as finding funding for more doctors and dentists, extending the Health Centre or even repairing the town clock. We have a very able council to carry out that work. We enhance the town for the benefit of the whole community by securing funding for projects, not the provision of statutory services.

Although progress of the

sculpture trail was halted by Covid, all of this information has been included in previous issues of The Ambler. You can read back copies on the Ambler's website: www.theambler.co.uk/back-issues-of-the-ambler/

Other information on the community engagement work was available during the Puffin Festival. If you did not see it, I doubt you will be reading this now, but the information was there and shouldn't come as a surprise just because it is on social media.

If anyone would like to become a Trust member, it is free, and you only need to fill in a form. Call in to the office: Fourways2, Dilston Terrace for details. You do need to be over 18, resident or work in Amble. *Julia, all Trust staff and Trustees* julia@ambledevelopmenttrust.org.uk

DEVELOPMENT TRUST MEMBERS:

The rescheduled AGM will be held on 14 September at 5pm

Off road bikes

Northumbria Police and Northumberland County Council are working together to address concerns about the use of off-road motorcycles in the Amble area.

Police and NCC are keen to make sure that riders are fully aware of their obligations in order to make sure they are riding safely.

To ride a bike on a road it must be constructed for use on the road and ridden only on the road and not on public parks, pavements, public land, waste land or parkways. Off road bikes can only be ridden on authorised tracks and nowhere else.

Police have already taken positive action in recent months and offenders have either had their bike seized or had notice of the intention to have it destroyed should they continue to ride in a disorderly manner.

Any information relating to the use of off-road bikes can be passed in confidence to Northumbria Police or Northumberland County Council. Contact the Police by telephoning 101 at the time of the incident or <https://beta.northumbria.police.uk/our-services/report-it/report-an-incident/>

You can also call the anti-social behaviour unit at Northumberland County Council on 0345 600 6400



Funeralcare

Our caring staff are here
to listen and advise you,
24 hours a day, 7 days a week



Coquetdale Cottage, Queen Street, Amble
Tel: 01665 710437

Lionheart Cleaning

Commercial & Domestic Cleaning Services

Your One Stop Cleaning Service Provider

Our ever expanding teams of fully trained and insured operatives are insured and able to carry out all of the following aspects of Domestic and Commercial cleaning for you, or your business.

Carpets and upholstery	Conservatory	Pressure washing
Windows	Roofs	End of Tenancy
Gutters/Fascias	Commercial	Post Build
	Kitchens	General

01665 713448 www.lionheartcleaning.co.uk

M.B. JOINERY

- All joinery work undertaken
- Internal & external painting
- Laminate Flooring/Skirting Boards

FAST AND FRIENDLY SERVICE

RING: 07776 072049



Amble Town

COUNCIL

Town: 6pm. 11th Aug., 8th Sept at Fourways 2 top floor
Amenities: 6pm. 29th Sept at Council Offices

EAST WARD:	Helen Lewis, Ian Parks, 33 Warkworth Avenue, Warkworth. NE65 0TP	Craig Weir (Chair/Mayor) 76 Priory Park, Amble NE65 0PH 07751 229 739	WEST WARD:	Jeff Watson 14 Magdalene Fields Warkworth NE65 0UF 07802 385367	David Bewley 11 Brinkburn Place Amble NE65 0BJ 07525713086	CEN. WARD:	Kate Morrison, 3 Island View, Amble NE65 0SE 01665 711191	Paul Dancer Wellbank Victoria Villas Amble NR65 0LQ pauldancer1998@btinternet.com
-------------------	---	--	-------------------	--	---	-------------------	---	--

PADDLERS

The water feature pump was modified and working again in late June. Although a robust structure, this has been the subject of repeated vandalism since it was first installed. Manufacturers and contractors have all stated their disbelief in the wanton deliberate destruction of this item which has required considerable constant effort to dislodge it. These acts cause distress and dismay as well as resulting in large costs for repairs. Due to the location as well as health and safety regulations this was the only type of water feature which was deemed acceptable. We hope that it can at last remain there and give pleasure to young children for many years to come.

WEST CEMETERY

During late May and June, we acknowledged that standards have been far from ideal. We have held talks with our contractor who was very apologetic stating that operational problems and manpower issues were the cause but these should now be resolved. Members have checked and the grounds have improved but these will continue to be monitored closely. Shrubs will soon be cut back as will the hawthorn hedge by the cremated remains area. The new seat as you walk up the main drive should have been installed by the time you read this.

VACANCY

There are two vacancies for Council members - please contact the Clerk for details.

SEATS

We are looking at replacing seats as needed with recycled plastic to reduce deterioration. These are more robust and suitable for our seaside atmosphere. We are starting with the seats along Bay View promenade but all manufacturers are experiencing difficulties with supplies so it may be a while before these are in place.

AMBLE TOWN COUNCIL AUDITED ACCOUNTS

earmarked funds at 31st March 2022

COMMUNITY

SCHOOL PRIZE FUND towards next batch	£900
SEATING refurbishment/replacement	£4810
TOWN PROJECTS towards projects/enhancements	£11835
COMMUNITY/ENVIRONMENTAL public meetings/ environment works etc.	£11470
COMMEMORATIVE EVENTS	£3500
MATCHED FUNDS towards projects attracting grants	£1300
ALLOTMENT FUND boundaries, walkways, maintenance	£11816
RECREATION maintenance/future replacement	£19989
WEBSITE & COMMUNITY COMMUNICATION	£820
LITTER BINS refurbishment/replacement	£6000
BUS SHELTERS refurbishment/replacement	£7000
NOTICEBOARDS repairs/replacement	£3000
ACTIVE AMBLE	£4450
CCTV	£5000
TOWN	
MEMORIAL CLOCK maintenance/service	£7200
MEMORIALS upkeep/repairs	£556
MEMORIAL GARDENS maintenance	£1800
WALL REPAIRS	£4720

ASSET MANAGEMENT

CEMETERIES

EAST CEMETERY MAINTENANCE walls/ boards etc.	£800
MEMORIAL SAFETY checks and stabilisation	£3500
WEST CEMETERY PREMISES maintenance	£3000
WEST CEMETERY MAINTENANCE walls/drive/fence/trees etc.	£9890
WEST CEMETERY DEVELOPMENT signage/mapping/new	£22000
CEMETERY REGISTERS legal requirement	£610

COUNCIL COMMITMENTS & STAFFING

COMPUTERS & I.T. new and replacement hard/soft ware	£4450
QUALITY STATUS registration fee	£500
ELECTION COSTS for elections/ by election	£9000
OFFICE FURNISHINGS ETC.	£3000
LEGAL/ REGULATORY PROCEDURES advice etc.	£20000
TRAINING staff & councillors	£4000
COVID GRANT	£3270
LOYALTY FUND retirement gift/ civic & community	£3390
CONTRACTUAL OBLIGATIONS	£45200
CONTINGENCY emergency cover	£10000
GENERAL FUND	£65302

EQUALS TOTAL BANK BALANCE £314078

PLEASE CALL IF YOU WISH TO MAKE AN APPOINTMENT TO VIEW THE AUDITED ACCOUNTS FOR THE FINANCIAL YEAR ENDING 31/03/2022

TOWN COUNCIL OFFICES, FOURWAYS 2, AMBLE. NE65 0DT Tel: 01665 714 695 www.amble.gov.uk

Email ask@amble.gov.uk Twitter: @AmbleTC Facebook: www.facebook.com/AmbleTownCouncil

Office hours: 10.30am-12noon & 1.30-3p.m. Monday to Friday Vicki Smith, Town Clerk Minutes available to view in Office or online

Shorebirds need your help!

For two years now, nesting Ringed Plovers have been monitored along the Northumberland coastline, and it has been incredibly valuable to discover exactly where the birds are nesting, with some previously unknown sites becoming apparent.

Throughout April and May, ringed plovers were nesting all along the coast, including on Amble Links beach. By the end of May, we were hoping that some of the early nest attempts would have been successful and chicks would have fledged. However all of those nests failed due to adverse weather conditions, predation and human and dog disturbance.

Nesting shorebirds face a number of challenges throughout the breeding season, and for this reason, their population is declining. In the UK, Ringed Plovers are red listed due to their rapid population decline; however, it is important to think globally when it comes to shorebirds as some species

migrate between continents. For Oystercatchers, a bird which is a common sight along the coast, their global population is threatened, therefore every nest is extremely valuable.

Despite their early losses, the birds have shown incredible tenacity and most pairs have had another nesting attempt. Most wader chicks leave their nest at just a few hours old and begin feeding for themselves. As they explore their surroundings, they can range quite far from their nest site, leaving the protection of the fencing and making them very vulnerable to predators and accidental trampling by humans and dogs. We ask that you help give these little birds a fighting chance by keeping dogs close to you when near a nest protection area and keeping well clear of the fence to avoid causing disturbance.

Space for Shorebirds rangers and Coast Care volunteers will be on site to talk to beach users about the birds they are sharing the shore with, and to monitor



Ringed Plover chick

the chicks. The more helping hands we have, the better it is for the birds, and if 'Chick Watch' sounds like something you'd like to get involved with, please visit www.coast-care.co.uk for more information about this and other activities on offer throughout the summer.

We post regular updates about the nesting shorebirds on our social media pages – Facebook and Instagram (@spaceforshorebirds), and Twitter (@ForShorebirds). Thanks to all for keeping nesting Ringed Plovers and Oystercatchers in Northumberland safe by giving Space for Shorebirds.

Northumberland people and places

Two well-known Northumbrian historians will be exploring aspects of our wide and varied local history, via the Amble and District Education Association, during October and November.

Barry Mead, awarded Community Archaeologist of the year 2018 and National Lottery Legend 2019 will start off on October 5, and John Grundy, popular local historian, television presenter and author will follow with talks throughout November.

Meetings will be held in Amble Masonic Hall on Wednesday mornings from 10am till noon on the following dates: October 5, 12, 19 and 26, November 2, 9, 16 and 23.

All are welcome.

For further information visit our website: ambledistricted.uk or email ADEA chairman, terryvickers8@hotmail.com or phone ADEA Secretary 01665713967.

Amble Connect

The aim of this project is to bring together Business and Voluntary organisations within Amble for the mutual benefit of the Community. This will provide an opportunity for these organisations to show what they can offer and in turn would enable support for each other to their mutual benefit.

This interaction will also help everyone to understand what is available locally in a wide range of goods, services and community groups.

Through a mutual coming together everyone will be able to bring forward and support new ideas, projects and ventures for the future. Amble Connect will provide a means to link all initiatives into one with a common goal to help Amble. This common community bond will provide a corporate body which can be used to seek funding for large projects within the Town and also be a platform for all groups to communicate and link in with existing structures. The modern term is "networking"

Being realistic, the starting point has to be small and representative of a cross section of those interested. 'Amble Connect' is the working title for the first meeting phase which will be facilitated by finance from Amble Town Council (ATC); however the ultimate goal is towards self-sufficiency.

If you have a business-large or small- in Amble and would like to take part in this initiative or if you represent a charitable organisation or Community group looking for volunteers or to expand an idea or if you are a resident who wants to help Amble then contact ATC now for further details!

TOWN COUNCIL OFFICES, FOURWAYS 2, AMBLE. NE65 0DT Tel: 01665 714 695 www.amble.gov.uk

Email ask@amble.gov.uk Twitter: @AmbleTC Facebook: www.facebook.com/AmbleTownCouncil

Warkworth Film Club Summer 2022

The Film Club begins its summer schedule on 6 August at Warkworth War Memorial Hall, 40 Castle Street, NE65 0UN

- Doors and cash bar open from 7pm, film starts at 7.30pm
- No need to book – seating is plentiful

• All welcome – just turn up from 7pm, £5 donation per person

• Even if you have seen a film at home before, give the film club a try – you'll be surprised what a difference it makes watching on a big screen.

August 6: The Duke

British comedy-drama directed by Roger Michell and starring the ever-entertaining Jim Broadbent, Helen Mirren, Fionn Whitehead, Anna Maxwell Martin and Matthew Goode. (2022, 1h 35m, certificate 12)

September 3: Phantom of the Open

Starring Mark Rylance and Sally Hawkins this is a highly entertaining comedy drama. (2021, 2hours 12 minutes, 12A)

For more information call Anna on 07758 253104 or anna.willey@cantab.net Or see our Facebook page www.facebook.com/warkworthfilmclub

Pass Wide and Slow campaign

An event has been organised to highlight the dangers faced by horses and riders in the traffic on our roads. The Pass Wide and Slow Campaign event will be held on September 18.

The ride will start at Hope Farm and go along the road to Togston. We would like some cyclists and walkers to join in, and we hope the police will provide some officers too. All riders /walkers are asked to sport hi-viz wear.

Water and soft drinks will be on hand.

More information is available from Laurie Wilkinson: l.j.wilk@hotmail.co.uk See also the Hope Farm Equestrian FB page and the Pass Wide and Slow FB page

Amble Variety Show

This year's show was held in the Masonic Hall thanks to the generosity of the hall committee. We had a packed evening with a huge variety of talent on show: singers, musicians on instruments of many sorts, puppets, poetry, stories; classical, folk, pop, music; and a song, written and performed by members of The Puffin Lounge. This is a song about Amble -our town, and everyone (performers and audience) joined together at the end to sing it again. We were delighted to welcome Ameera from our Syrian family who sang

so beautifully for us.

So, a FAB night was had by all. If you were there, thank you for your support; if you weren't, then we hope to see you at the show in 2024....watch this space. Donations were taken on the night, and we are pleased to report that £829.71 has been sent to Christian Aid.

Thank you from me to all the performers, the Masonic Hall staff, the audience, and the behind-the-scenes-people - especially Eric Davidson - without whom the show could never have happened.

Sue Swanston (organiser)

Pop-up picnic and sing

Adapt for your diaries. Bring your rug or chair, some food and your voice along on Sunday 21 August because you are invited to a POP-UP PICNIC from 2 pm onwards at the Little Shore.

This will be a great community get together so bring

your family and friends to enjoy the company, music and our great Amble sea air.

Don't worry about the weather – if it rains we shall carry on in Trinity Methodist Church Hall on Percy Street.

Amble Churches Together

Lifeboat Day returns - with special guest

Amble RNLI Harbour Day, takes place on Sunday 28 August on Radcliffe Quay in front of the Lifeboat Station.

The day kicks off at 10am with the Opening Service conducted by the Rev. John McDermott. Ross Hutchinson, who presents Tyne Tees Weather, will be opening proceedings.

This is a fun day out for all the family. Look out for the RNLI mascot Stormy Stan. Meet the crew. Have your photograph taken with some classic Harley Davidson motorcycles. Several entertainers will be there including American folk singer Tom O'Donnell. Meet the Queen's Own Yeomanry.

There will be lots of stalls and a grand raffle with many prizes including a painting by talented local artist Luke McTaggart and a two-night stay at the RNLI College in Poole.

Teas, coffees and delicious sweet and savoury homemade

treats will be served upstairs in the RNLI Lifeboat House.

Please can you help us with:- Donations of items to sell i.e. books, tombola prizes, Bric a Brac (no electrical items). These can be dropped off from Wednesday 24 August at the RNLI boathouse or contact us as below.

Calling all bakers! Your home baked goods can be left at the station on Saturday 27 throughout the day.

Helpers are needed on the day to man stalls and assist with refreshments

All donations and offers of help are very much appreciated. If you can help out on the day please contact Bartle Rippon on 07964 171457, Linda on 07950 940950, Christine on 07434 544924 or message us on Facebook - Amble Lifeboat Fundraisers. Most importantly come along and have a great day out!
Amble Lifeboat Fundraisers

Bands at The Bede

Saturday nights at The Bede - Tickets available from the bar or on the concert room door on the night. Bands start at 8:30PM

- 23 July - Manchester Anthems
- 13 August - NE Street Band
- 10 September - ODELS * Free in 1902
- 8 October - Brit Pop Union
- 29 October - 6 Card Trick
- 26 November - Beyond Madness
- 17 December - Dead Beat * Free in 1902

Social events with Age UK Northumberland

Starting Monday 1 August in Amble Library, (Middleton Street, NE65 0ET) from 10am till 12pm. Every week is different, so pop in and enjoy a cuppa and a chat with friends. The activities include:

- Board Games
- Arts and Crafts
- Visits from Local Groups
- Information and Advice
- Hot beverages with cakes and biscuits

Anyone over the age of 50 and living in Northumberland is welcome to join. We are a super friendly, inclusive group. We're also looking for volunteers to support the group if anyone fancies joining us and helping out.

Table Tennis

Lesbury Table Tennis Club meets at the village hall every Friday from 7pm until 9pm, except for the third Friday in the month (film club night), from the September 2 to the end of May.

The club, which is for adults only, is sociable and friendly and caters for all abilities; no previous experience is necessary.

Bats and balls are available; however, please feel free to bring your own bat if you wish.

Tea or coffee and biscuits are provided.

Many of us who play regularly

had not played since our youth and really enjoy playing again. Whether you are thinking of reviving long lost skills or trying the game for the first time, you would be very welcome. You can give it a go without any long-term commitment.

Our sessions are pay as you go (£2.50 per session including refreshments); there is no annual sub and no membership formality.

For more information, please contact Ernie Harpur by email ernieharpur@gmail.com or phone 07779775057

Church donations to food bank

"In these challenging days we recognize the difficulties many families are facing, and we wanted to do our part to help our community" said Pastor Neil Sayers of Harbour Lights Church following their donation of £150 to Amble Food Banks 'Heat or Eat' Campaign. On their Puffin Festival stall, they had various activities especially for children and all the proceeds went toward the donation.

"The Puffin Festival is a wonderful opportunity to meet people and let them know about our growing church and in the

process stand alongside those in need. The lovely weather made for a joyous occasion, and we would like to take this opportunity to thank everybody who helped make the Puffin Festival such a great success. We look forward to next year!" added Pastor Joan Sayers.

Details on the work of the church can be found at: harbourlightschurch.com and if you would like to donate to Amble Food Bank you can contact them via their Facebook page.

Pastors C.Neil & Joan Sayers

New Harbour Commissioners wanted

Are you interested in becoming part of a small but dedicated management team?

Warkworth Harbour Commissioners need people that have skills, experience or involvement in harbour operations or broader business experience. Local knowledge would be advantageous.

WHC as a Trust Port offers in return no salary, but the satisfaction that you are contributing your time, skill and

enthusiasm to the running of a vital facility which provides work and leisure to the local community and visitors to our town.

Apply in writing to:

The Chairman
Warkworth Harbour Commission
Coquet House
Amble Morpeth
Northumberland NE65 0AP

Mark your application Private & Confidential to be opened by addressee only

150th Warkworth Show



photo by Len Smith

We are back! A tented show in the grounds of Warkworth Castle, Saturday 20 August 2022 Open to the Public 10 – 4.30

This year will be the 150th Warkworth Show, founded in 1859 and with some years off for the War, Foot and Mouth and latterly Covid. Many things have changed, not least the cost of putting on a Show, but this year we are keeping the price of the entry ticket as it was in 2019.

We have 300 competitive classes in Horticulture, Cookery and Preserves, Handicrafts, Art and Photography and Children's classes.

Children's entertainment, Climbing Wall, Circus Skills, Story Tent, Dog Show, Classic Cars, Crafters, Trade Stands and this year a food court.

Schedules are available now at N&F Young, Amble Pin Cushion, on Queen Street, Young's Newsagents on Newburgh Street, the Allotment Hut, and Warkworth Post office.

Early Bird Tickets will be on sale in the Queen Street Shops and Warkworth Post Office from late July. Come along have a great day and support this community event

MOCHA MONDO
COFFEE

SHOP COFFEE

Northumberland
Fudge
co

SELL FUDGE

ao
aillio

**START YOUR OWN
BUSINESS**

jura

fracino

**COFFEE MACHINES
+ ACCESSORIES**

Call us at Mocha Mondo at: **01665 714767** or email us at **roastedandposted@gmail.com**

Amble ball kid at UEFA Women's Euro match

If you are a football fan, you might have spotted Amble's very own budding football star during the England vs Austria UEFA Women's Euro match. Lyla Smith, a Year 10 student from JCSC, was nominated to be a Visa ball kid for the match, and afterwards she told us how it went.

"I was so nervous at the start, my legs were like jelly!" said Lyla, "But once the nerves had gone, I was the most excited I had ever been. When it was full time, I was gutted that the experience had come to an end but I left with lots of great memories."

It was thanks to the Amble Youth Project who told the school about the opportunity, and JCSC who nominated Lyla, which enabled her to take part. "I never thought I would get picked but here I am! We even got to stay in a five star hotel and I got lots of kit and football boots to wear during the game."

Being a ball kid meant that if a ball went out of play during the match, Lyla was the one who threw a new ball to the players and retrieved the old one. "When the players were warming up I was very close to them! During the game, the ball went out quite a few times

so I had to keep jumping over the barrier. I was very nervous in case I could not do it but I managed. I got to pass the ball in quite a few times and even to Lucy Bronze! The whole experience was amazing and something I will never forget."

She might not have got to hang out with famous players during her tightly scheduled time as ball kid, but Lyla is a star football player herself. "I would love to continue to play football," she told us. We are hoping to be cheering her on as Amble's first England team footballer in a few years' time!

Lily Tibbitts



Lyla Smith at the UEFA match

A blistering afternoon at The Colony music festival

"If you book them, they will come" said a great philosopher* and WOW did they come. With the sun shining and the crowds building, DJ Jamie Mac provided the tunes until the bands started. Talk of crowd size soon turned to an absence who wouldn't go unremembered: Mark "Shakey" Dixon. The stage will be forever known as "Shakey's stage" after all, there was no bigger stage for Shakey to dance than at the Colony festival.

Rick and Yiota, newcomers to the festival, were the first band up and soon had the crowd singing along to a range of songs across the genres. Jonathan May then treated us to a range of rock classics in his unique acoustic style, and as always had the crowd foot tapping and joining in. As the temperature rose, the tempo rose and he finished his set with the crowd wanting more.

Deadbeat seamlessly slotted in next, belting out the rock classics with a ferocity even Joe Strummer would have been proud



Britpop Union performing on Shakey's stage. Photo by Wobbly Fingers

of. The crowds were nearing their peak and the dance floor was christened.

A change in style, but certainly not a change in action. Corporal Bones took us back to the 50s and gave the crowd a lesson in rockabilly. Their remastering of modern songs into this classic style was a pleasure to listen to and their energetic performance defied the searing heat.

The historic tour didn't stop there, as the Britpop Union took

the crowd forward to the 90s. Memorable tunes from a magical era in music had the dancefloor pumping, and singing levels rose through the roof, well they would have had there been a roof.

The crowd barely had time to rehydrate, before "Amble's Entertainers" The Range burst onto the stage at full throttle to blast out their tunes to their ever-adoring public. It was almost as if the man at the back said everyone attack, as there was a

blitz to the dancefloor. The heat was dismissed, and dancing moves and effervescence not seen since David Brent.

Six Card Trick were chosen to close the festival, but they missed the memo as they played the crowd like puppet masters, and extracted every last kilojoule of energy from the crowd.

Unfortunately, the day had to come to an end and the festival closed for another year. The fact that it was able to be held again is down to the work of a dedicated committee, but more importantly to local businesses and groups that sponsored the event.

The festival's main sponsor Castle North Plumbing, Coquet Island Shellfish, Amble Town Council, Amble WI, Amble Crochet Club, FC Amble, and Kayleigh's Kitchen deserve as much applause, and support as the bands who performed. Without them there couldn't be a "free" festival to enjoy.

Aaron Armstrong

*Wayne Campbell, Illinois 1993

JCSC cricketers play at Lords

Two year nine pupils at JCSC will fulfil the dream of every cricketer this summer when they play at game at Lords – the most famous and iconic cricket ground in the world.

Oliver Bremner and Conn Sullivan are part of the under 15 Newcastle MCC Hub. There are 50 hubs around the country and talented players from state schools are selected to benefit from winter training and professional coaching. Through the season, the boys have played in a national competition and beaten teams from Leeds, York and Edinburgh. On the semi final day, Newcastle beat Bolton

off the second last ball, with Oliver Bremner hitting the winning runs and then narrowly lost to Bradford, but they had done enough to win the day and progress to the final at Lords on run rate.

Oliver and Conn both play for Warkworth Cricket Club and at the age of 13 and 14 both play in the men's teams. Oliver is a quick bowler and Conn a spinner and so far this season have taken 51 wickets between them, playing for Warkworth first and Second teams. That is a fantastic achievement playing in men's cricket at such a young age.

The final is against



Conn Sullivan and Oliver Bremner

Nottingham and is a once in a lifetime opportunity for that lads. Conn Sullivan said "I cant believe that players from a small club like Warkworth in Northumberland can get to play at Lords. I am nervous and

excited at the same time and cant wait to get down there to see the ground and get to play on the same pitch as the best players in the world and that we see on TV"

Richard Sullivan