



The Ambler

Amble's Community Newspaper

Issue 139 April/May 2023

Royal visit to the Friendliest Port

The Ambler has learned that there will be a Royal visit to the town sometime in June. The - as yet - unnamed Royal will officially open the Bord Waalk sculpture trail. We will keep you posted.



The Ambler shortlisted for prestigious award



We are honoured to have been shortlisted for the ICNN Independent Community Newspaper of the Year award 2023. We're in distinguished company, along with seven other independent community news titles from across the country.

Upgrade for MUGA



The MUGA (Multi Use Games Area) at the Welfare is in line for an upgrade through funding from the Football Foundation and NCC. A consultation was held in March to ask potential users what kind of sports activities they would like to see take place in the space. All being well, work will commence in early summer.

Friends rally round for lifesaving Amble surfer who lost home



Surfing instructor Jacob used his campervan as his home

An Amble surfer who helped save three people from drowning has lost his home and belongings after a robbery. But kind hearted friends are rallying to help him get back on his feet.

Jacob Poulton had his camper van and all his belongings stolen during a stop-over on his way from Cornwall back to Amble. And when police dropped the investigation, and his insurance wouldn't pay for the contents, he was left with nothing.

Jacob moved from Amble to Cornwall in October 2021 to teach surfing, and used his campervan as his home. He told The Ambler how upset he felt at the loss:

"I've never really had a place to live permanently until I had my van which was always there, and I'd worked so hard to convert it. I was coming home to Amble and thought that the 10 hour drive would be a bit long, so I stopped off to see a friend in Warwick. I got there at about 9pm and returned a few hours

later and it was completely gone.

"The police dropped the investigation about 48 hours later and said they couldn't find it, and the insurance won't cover the contents of the van which was pretty much every item I own, expensive or sentimental or essential."

But that's when friends from across the country stepped in to help, by setting up a crowdfunder page for him.

Jacob said "My friends from Cornwall and Amble have been absolutely amazing and so supportive. Setting up the gofundme was absolutely amazing, because I had no idea they were doing it. They just knew how rough it was [for me], and next thing I know there's people donating to me, and I had no idea about it."

Last year, Jacob and surf instructor Jon Nolan of Amble's Northside Surf School won silver in the North East Tourism's Unsung Hero category, partly as an acknowledgement of when they rescued three swimmers

who got into difficulties in the sea at Druridge Bay. The swimmers became caught up in the rip tides, and Jacob was one of the surfers who helped bring them safely back to shore. (See Issue 129, p20)

But now it seems Jacob's good deeds have been reciprocated. Ryan Jobson told The Ambler: "I have known Jacob since he was a boy and I'm a family friend. When I read what happened to him, I wanted to help in some way.

He added, "The people of Amble always help their own and Jacob has the support of his family, friends and community here in Amble and in Cornwall."

Jacob said "I never thought I'd receive this much support and I'm so grateful. It's all amazing knowing that when you least expect it so many people can reach out and restore a bit of hope after having everything taken away from you."

The GoFundMe page to help Jacob can be found here: <https://gofund.me/8770378e>

Should we have a statue for Freddy the dolphin?

Who remembers Freddy the dolphin? He visited Amble harbour on a daily basis for around five years in the late 1980s and became a bit of a celebrity.

Perhaps it was the delight he brought to an otherwise depressed and grimy former coal port, or perhaps it was the sheer uniqueness of such a beautiful and friendly wild creature happy to greet swimmers and sightseers.

Whatever it was, Freddy the dolphin put Amble on the map, with celebrities, mystics, journalists and people from all over the world travelling and staying in Amble just so they

could see and swim with him.

You could buy 'I love Freddy' t-shirts and mugs in local shops. So we could argue he was the first catalyst for big tourism in Amble. He definitely brought friendly to 'the Friendliest Port'.

Quite why this solitary bottlenose dolphin chose to remain for so long in Amble's filthy harbour waters (it was documented he had skin conditions probably due to cold water and sewage) is a mystery, but it did seem he loved the attention.

There was an alleged incident with an animal campaigner, subsequently thrown out of court, but the biggest drama



Above: Freddy catching his lunch outside Amble Harbour.

Left: Boat trips to see Freddy were very popular



befell poor Freddy when a police boat drove over him. The propellor caused serious deep wounds over his torso, which took months to heal.

Freddy left Amble about six months later, never to be seen again.

But some people still remember him. They remember the delight he brought with him (and the salmon he ate). Some

even want to create a permanent memorial for him, preferably along the harbour. (See our letters page). What do you think? A land owner would have to agree to a site. People would need to fundraise.

Should we have a statue for Freddy? We've set up a poll on our website so you can let us know.

Anna Williams

Broadband infrastructure upgraded throughout Northumberland

Northumberland County Council has awarded Commsworld, the UK's largest independent network provider, a 20-year contract worth £22m. The contract will see £114m of private investment into the region to transform and support the county's digital infrastructure over the next 20 years.

Alnwick based communications company Alncom are partners in the project. Work is already underway installing new high quality fibre optic cables alongside existing telecom infrastructure, bringing faster connectivity right up to people's front doors.

High and Low Hauxley are due to be completed by the end of March, and work is ongoing in Amble.

The broadband upgrade project will replace the county's ageing Wide Area Network (WAN) with world-class full-fibre infrastructure which will also provide businesses and

communities across the county – including its most rural areas – with access to faster, high-quality, reliable connectivity.



properties across the county to Fibre To The Premises (FTTP), many of whom have never enjoyed access to gigabit-capable

infrastructure it creates can be used by us to reach the more rural parts of our county and also provide faster internet speeds to the more urban locations.

"Our partnership with Commsworld gives us capacity to build 10Gig networks which are more future proof."

Cllr. Glen Sanderson, leader of Northumberland County Council, said: "This long-term approach marks a new and historic way forward for the council and its positive impact cannot be underestimated. "Above all, it will directly tackle digital exclusion, especially for those in our rural areas. Equality of access is vital if we want to improve the lives of all our citizens.

"Providing access to significantly enhanced internet connections will go a very long way to bridging this digital divide and benefit all our schoolchildren, parents and families, as well as our businesses and organisations."

Commsworld and their partners will deliver 262km of new fibre infrastructure, which will transform connectivity to nearly 150 council sites. It will also enable access to more than 120,000 residential and business

fibre networks.

Stephen Pinchen, Managing Director of Alncom told The Ambler: "Alncom are delighted to be involved in this positive and transformative news for Northumberland. The new

From Coquet High to Buckingham Palace



Congratulations to Scott Dickinson who has been awarded the MBE for his services to Northumberland Communities. Scott is Leader of Northumberland Labour group and is county councillor for Druridge Bay.

Recognition was given for his work for the residents of Northumberland in his roles with charities, Northumbria NHS, and Northumberland County Council.

Scott is managing director of Hadston House, and praise was

given for their work supporting vulnerable people during the pandemic.

Scott was awarded his MBE in March, by the Princess Royal at Buckingham Palace. He told *The Ambler*: "It was a tremendous honour and an overwhelming experience to be recognised for the work I do. Raising the profile of our area and Northumberland can only be beneficial for all."

"I am proud of all we do and achieve together for the people of Northumberland. I was also delighted that my parents and partner could experience the day with me. Now I'm back the work continues, and the change will come that's so desperately needed for our communities."

Scott grew up in Broomhill and attended Coquet High School, where he became the first Chair of the School Council. He later went on to become Chair of Governors, taking the school out of special measures, replacing the leadership team, and overseeing the formation of James Calvert Spence College.

E Scooters advice

Do you or your child own an electric scooter?

Safety concerns continue to be raised by residents regarding children and young adults using e scooters.

E scooters are classified as Personal Light Electric Vehicles, so they are treated as motor vehicles and subject to the same legal requirements, such as MOT, licensing and insurance.

It is therefore illegal to use them on our region's roads and footpaths.

Guidance was issued saying rental companies could soon make the vehicles available to the public in conjunction with local councils.

However, the use of privately bought E-scooters on the road, cycle lanes and tracks and pavements remains illegal.

We don't want anyone to fall foul of the law and so please make sure you're aware of the rules around E-scooters.

John Swan
(Police, Neighbourhood Inspector,
North Northumberland)

QUALITY COFFEE FOR YOUR WORKPLACE

- ⌚ AUTOMATIC BEAN-TO-CUP
- ⌚ PLUG IN AND ENJOY
- ⌚ PREMIUM COFFEE IN 30 SECONDS
- ⌚ REDUCES COST LONGTERM
- ⌚ AWARD WINNING LOCALLY ROASTED COFFEE AVAILABLE
- 📍 SHOWROOM APOINTMENTS AVAILABLE

GET IN TOUCH WITH AMANDA AT
ROASTEDANDPOSTED@GMAIL.COM
UNIT 6D, COQUET ENTERPRISE PARK,
AMBLE, NE65 0PE
01665 714767

MOCHAMONDO.CO.UK

jura MOCHA MONDO COFFEE



Purple crocuses bloom along Rotary Way

Thousands of crocuses are now springing forth along the verges of Rotary Way between Amble and Warkworth. They are bringing a splash of purple colour because of the work done by Amble and Warkworth Rotary club members.

Why purple crocuses?

Well the purple crocus was adopted as a symbol by Rotary International to help eliminate polio from the world. This purple flower represents the purple dye used to mark a child's finger after they have been immunised against polio in

countries with undeveloped child health registers.

Rotary International started this campaign to eradicate polio from the planet in 1988, working with the World Health Organisation, UNICEF and the Centre for Disease Control and Prevention (and more recently the Bill Gates Foundation).

Since this campaign began, the number of polio cases has been reduced by 99.9% and it has reached more than 2.5 billion children with the vaccine.

Without this campaign, hundreds of thousands of children would have been

infected by the polio virus resulting in paralysis and increased child mortality particularly in children aged under five.

So next time you travel along Rotary Way and admire the purple crocus along its verges, please remember what these flowers symbolise: the efforts that are still ongoing to eliminate the scourge of polio across the world.

To find out more details about the ongoing Rotary campaign to eradicate this dreadful disease go to www.endpolio.org

Church "Collections"

Most people when they think about coming to church for any reason remind themselves that they will need to bring something to put into the collection.

Well, we at St Cuthbert's wanted to share with you the kind of things you can bring to put into our "collections".

We are a collection point for the Amble Food Bank so if you have any items you want to donate for our local bank you can always pop them into our green bin at church. We also, of course, are a collection point

for used blister packs for our recycling project as mentioned in the last Ambler.

As you come into St Cuthbert's church, which is open every day of the year, you will see straight ahead of you a table set up with nets and paper fishes. We invite you to write down any prayers or concerns that you have for yourself or others. Once a week we collect these together and include them in our Sunday morning prayers.

To the right of our church door you will quite often see

boxes labelled as collection points for different appeals.

We have recently sent off contributions to Ukraine for both front line men and separately for front line women. We are expecting to be taking part in the next Ukraine appeal for orphaned children. The boxes will inform you as to what is being looked for.

There are also collection boxes for money contributions. These are put out when the church is open at service times.

The most important "collection" that we make is as

a collection point for people. On the 2nd and 4th Saturday of every month we have a coffee morning with jigsaws and everyone is welcome. These are social occasions with a real buzz to them. Do come and see all our collection points.

As the Parish Church of Amble we do belong to everyone who lives in the town and we feel that it is very important that we provide a place for them to come share their worries and that we enable people to donate to those who are in need.

Amble Food Bank update

Amble Food Bank (AFB) would like to thank our local communities for their continued generosity, particularly during such challenging times with the current cost of living crisis. We continue to be overwhelmed by the amounts of food donations that come in to us.

A huge thank you also for all financial donations that we receive. We are conscious that, with food prices rapidly increasing, the average price of a Morrisons pick up bag has risen significantly. If you'd prefer to buy your own items, then you can do so and simply leave them loose in our cage by the tills. We really do appreciate every single item donated! Alternatively, there is a food bin near the door at the Co-op where you can leave food items. Typical food items that we need include cereals, rice, pasta, pasta sauce, tinned veg/ meat / tuna / fruit / rice pudding / custard / soup / baked beans /

spaghetti.

Thank you once again for your incredible support. We rely solely on food and money donations - without these we simply could not operate.

You may have seen in the last edition of the Ambler that we received £10,000 from Northumberland County Council. Just to clarify... the grant was provided by NCC, but funded by the U.K Government as part of the Household Support Fund. The money was granted to charities and organisations targeting food poverty, and it was retrospective for money spent on food during the pandemic. It may sound like a huge amount of money, but we are currently spending around £2,000 a month on food alone - this is on top of your incredibly kind food donations which we really value. We do still need your donations! Thank you for your continued support.



With the increase in referrals to AFB, we have to carry out regular large food shops. Should you wish to make a financial donation to help with this, cash or a cheque can be addressed to us and posted through the letter box at Trinity Methodist Church. Or you can do a bank transfer via: Amble Food Bank, sort code 77-20-04, account number 17925260. We are registered with HMRC, so if you pay tax you can Gift Aid any donations (email us for a form). We also have collection tins at the Co-op,

The Farm bakery and The Boat Shed Gallery at Amble Harbour Village.

If you are in need, you can get a referral through an agency such as CAB, your local school or Health Visitor. Or contact Northumberland Communities Together on 01670 620015, 9-6pm.

Any general enquiries may be emailed to amblefoodbank@aol.com.

Many thanks again for your ongoing support.
Amble Food Bank

Amble welcomes Ukrainian family



George, Dina, Krystyna and 4 year old Sviatoslav

When Rev. Lynda Coulthard left Amble, the Methodist Church decided to replace her with a part time minister Rev. Christopher Wood Archer, last September. It then became obvious that the church would have a vacant detached four bedroom manse to sell, just as the demand for Ukrainian refugee accommodation was peaking. The local church agreed

unanimously in June last year to offer the manse to refugees, but permission was required from the national Methodist Council in London, who finally agreed to allow rent free accommodation for up to 12 months.

The church applied to host a family and was eventually paired with the Malay family who had fled from Odessa to temporary accommodation in Italy.

Meanwhile with the help of local churches and the Warkworth/Amble support groups, the manse had to be furnished. Both local and church people were incredibly generous and when the family arrived on 9 December, not only was the manse fully furnished and equipped, but £1,500 had been donated towards their utility bills, all in the midst of a cost

of living crisis – incredible generosity that the church and the Malay family deeply appreciate.

The family comprises Krystyna and her four year old son Sviatoslav, her brother George, her parents Vyacheslav and Dina and their Jack Russell dog Gretta. Sviatoslav's father stayed behind in Odessa to help the war effort. Krystyna is improving her English and hopes to find work, possibly using her degree in Pharmacy and Medical Aesthetics. Sviatoslav has settled well into Amble First School while George (who read a lesson at the Hauxley Carol Service) and Vyachoslav, who both speak reasonable English, are seeking work locally.

The manse garage has meanwhile taken on a new role as a collection centre for van loads of clothing, bedding etc. going to Ukraine – the family have helped loading at least two vans already!

With their own car, they have also been able to help ferrying other Ukrainian guests to English lessons – please think of them whenever you see a Ukrainian car numberplate.

Tom Lloyd



TIDY CLOUD
Chartered Accountants




LOCAL CHARTERED ACCOUNTANT

- ✓ Self Assessment
- ✓ Corporation Tax
- ✓ Annual Accounts

- ✓ VAT Returns
- ✓ Payroll & CIS
- ✓ Tax Planning

**CONTACT MATTHEW SPEARS
TO ARRANGE YOUR
FREE CONSULTATION**

☎ 01670 282 345

☎ 07596 926 740

✉ hello@tidycloud.co.uk

🌐 www.tidycloud.co.uk





TELEPHONE ORDERS WELCOME

01665 710 442

MONDAY TO SATURDAY: 11.30AM-9.00PM SUNDAYS: 11.30AM-2.30PM

***** NORTHUMBERLAND COUNTY COUNCIL

1 BROOMHILL STREET AMBLE NORTHUMBERLAND NE65 0AN



Make it look pretty again!

Maintenance and Design

- weeding
- grass cutting, edging
- planting, flower potting
- hedge trimming
- pruning
- landscaping
- paving, fencing

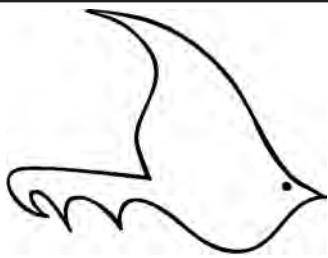
STANTON

Coast & Country Garden Service

01665 798543

AMBLE

 Visit us on Facebook



The Ambler

Fourways 2, 6 Dilston Terrace
Northumberland NE65 0DT

Tel: 01665 712929

www.theambler.co.uk
editor@theambler.co.uk

Facebook: TheAmbler

Twitter: AmbleByTheSea

YouTube: AnnaAtTheAmbler1



Editorial Team:

Vivienne Dalgliesh, Norma Hinson
Ian MacKarill, Mary Matthews

Editor: Anna Williams

Thanks to:

Mark Beswick & The Artogracchi Crew

Distribution:

Charlotte, Wendy, Lorraine, Bryan
Ian, John, Ralph

Printing:

CBS World, Alnwick

Would you like to join
The Ambler team? We welcome
contributions and help from anyone
who would like to volunteer.

DONATE TO THE AMBLER
via our website or this QR code



Thanks to all our contributors,
sponsors and advertisers:

Rotary Club of Amble and Warkworth



The Ambler is a proud member of
the Independent Community News
Network

The Ambler is a project of
Amble Development Trust



The Ambler is printed six times per
year. The views expressed in *The
Ambler* and *The Ambler Online* are
not necessarily those of
the Editorial Team

2023 Submissions dates:

#132 - 7 Jan	#135 - 1 Jul
#133 - 1 Mar	#136 - 2 Sep
#134 - 22 Apr	#137 - 4 Nov

Thank you to our lovely donors

Firstly we'd like to say a big thank you to the amazingly kind donors who have contributed to The Ambler after our recent request for help with our running costs. We are so very grateful and we'd especially like to thank George (you know who you are, and we know you didn't want us to make a fuss,) and to all the other donors who wanted to remain anonymous. You will see a QR code in the column to the left, so if any readers would like to contribute via Paypal, we'll leave it there!

We all know Amble is the Friendliest Port, and as several articles in this edition shows, people are generous in spirit as well as in deed. (See p1, p2, p4, p5, Artogracchi, p12, p19)

As we promised, The Ambler keeps asking about any progress on a possible reopening of the quayside walkway. The walkway has been closed for 18 months now and there is still no sign

of any work to repair the damaged railings, which was the reason Amble Marina gave for closing the route. (See *Issue 131 p4*.) Sadly, neither the Marina nor Northumberland

County Council have felt able to enlighten us on any progress, although NCC assures us "we will get back to you as soon as we can."

The Ambler team



Mad March weather: This bright and colourful shot of Amble in the spring snow was taken by Lynne Morelli

WHAT YOU SAY...

>> more letters on p8

The Ambler is a great read!

Thank you for the latest edition of The Ambler. It is a great read, full of the local information that is relevant to residents of this town.

We are new to Amble, having moved here in November 2021, following early retirement. We had been spending a lot of our leisure time in Northumberland, so it was a natural progression that we should live here.

I found the article by High Tindle, headlined "Disappearing wildlife habitats" very interesting. Someone so knowledgeable about the fauna native to this area has so much

insight of the changes, which have clearly taken place.

We had a lengthy search in Amble for our new home, finally settling on one of the new build properties on Hauxley Grange, mentioned in Mr Tindle's article. This provided us with an affordable home, in a location we liked, without the need to do renovation work. Property has become increasingly unaffordable for many, a situation echoed throughout other popular places to visit.

As a nation, we need more housing in all towns and cities; alas this is at a cost to the very

things that make areas like Amble so attractive. Likewise, new residents bring money into the area, hopefully creating employment for local people.

We walk the length and breadth of Northumberland, always our dream, we are so lucky to live here. Everyone we meet is friendly, the town has everything you need, we are proud to support local businesses, and hopefully become part of the community.

I look forward to the next edition, thank you.

*Kind regards
Susan Smith via email*

Looking for Joseph

I would like to ask your readers if anyone has a copy of the video that was made at Amble Middle School, in the early 1980's, of "Joseph and his Technicolour Dream Coat",

The lead of Jacob was performed by our son Simon, and we have never seen the recording that was made.

If anyone can help, we would be very grateful.

*Sue Lillico
thelillicos@hotmail.com*

Birthday gifts help Air Ambulance

David Beaty celebrated his 92nd birthday at the Bede Street Club with family and friends and raised £860 for the Great North Air Ambulance, and would like to extend a big thank you to everyone for their support.

*Mary McNally
via email*



Two new businesses soon to open their doors

Hot on the heels of new cocktail bar, Hummingbird, which opened in early March, Amble is set to welcome two more independent food and drink businesses

Gracy's

A new deli is due to open at the top of Queen Street in mid April. Owners Lesley Warne and Sarah Vaughan told The Ambler: "Gracy's will be a hot and cold deli and eatery. We'll be using local food as much as possible, with local producers, and we want to be a real part of the



community."

Gracy's will sell large jacket potatoes, salads and soups every day, and will also offer specialities based on the season or day, or whatever is available.

There will also be an emphasis on producing the minimum amount of waste. Check them out on Facebook for updates.

Firehouse No1

Firehouse No1 on Leazes Street (previously the Sand Bar) will sell their unique street food inspired burgers, chicken and steak takeaway boxes. Owner Gary Harland hopes to open in the next few weeks.

Gary told The Ambler: "We specialise in a variety of street food. I am very passionate about what we have set up. It's been

years in planning and visiting street events and shops all over England and Europe. We source local produce, and use bio degradable packaging. We make everything by hand and everything is cooked fresh to order."

Check out Firehouse No1 on Facebook and Instagram.



Amble Youth Project
In partnership with Coquet Shorebase Trust

Free
FANCY LEARNING TO SAIL? Age 12+
Call Tina to book a place 07488984053
Limited places
Sessions at Druridge Bay: Transport from Amble included

Easter: 5th/6th/12th & 13th April
Please call for more information
www.ambleyouthproject.org
ambleyouthproject

coquet shorebase TRUST

Amble Youth Projects: can you help out?

Are you 13+ and interested in working with us in different ways? Could you help to raise awareness around LGBTQ+? Or would you like to organize an event and gain event management skills? Do you want to be a young leader and earn as you learn? Please call Tina 07488984053.

Amble Youth Project needs volunteers, or anyone interested in becoming a trustee. Please get in touch to find out more.

For all you Co-op shoppers : we are registered with the Co-op as a charity. Please kindly add us to your list of good causes.

We have signed up to the BIG HELP OUT and need volunteers to help over the Coronation weekend, with DIY, painting, or any other skills to help us give AYP a much needed make over. We make a mean bacon butty and cuppa to say thanks for your precious time.

Many thanks to our school

holidays activities team led by Gary Morrison. We have just completed 3 days of fun-filled games for 8-13 year olds. The sessions are FREE and we will also be running Easter half-term sessions too. If your child is 8-13, and interested in art, sports, cooking or music, please contact Tina on 07488984053.

Look out for sailing as one of our future activities.

Tina Gibbinson,
Amble Youth Project

WILLIAM PURVES EST. 1888
FUNERAL DIRECTORS

*Compassion.
Dedication.
Integrity.
Respect.*

Our promise to you.

William Purves in

Amble 01665 712 277
Alnwick 01665 510 699

williampurves.co.uk

Cromie PHARMACY

NHS Providing NHS services

Blood Pressure Checks
Vaccinations
Allergy Treatments
Hair Loss Treatments
Erectile Dysfunction Treatments
Period Delay
Travel Vaccinations
Weight Management
Migraine Treatments
Contraception
Smoking Cessation
Podiatrist

and treatments not routinely offered by the NHS
To discuss any of our services in private, speak to a pharmacist

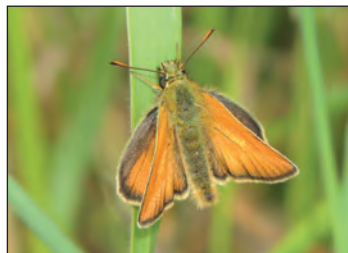
Visit our website for more information:
www.cromiepharmacy.co.uk
info@cromiepharmacy.co.uk | 01665 710 896
158 Percy St, Amble, Morpeth, NE65 0AG

Economics vs environment: the battle continues

On Sunday 5 February, a remarkable activity took place on the Coquet Industrial Estate. A group of people gathered to clear up litter on the patch of waste ground in front of the Coquet Motor Company premises.

They did a magnificent job filling several sacks as well as collecting a mountain of drinks cans. I wondered at the time why they had chosen to clear this particular site. It seemed to me that there were more obvious targets to tidy up, such as the public footpath behind Brambles rather than an out of the way patch of waste ground.

However, about a fortnight later this same area was obviously being prepared for



development. A metre wide strip had been cleared around the perimeter of this area and the spoil had been dumped on the site. Perhaps the site was being prepared for enclosure prior to future development.

If this were the case, then this site which has been colonised by small skipper butterflies and is also home to orchids, would be a sad loss. I wondered if anyone had bothered to carry out any



environmental impact assessment before considering any future development here.

I am well aware that all businesses are economically important but could there not be some kind of adjustment to protect sites, which are of environmental value too?

I do not suppose many people are aware of the presence

of butterflies and orchids on this particular patch of land, but to lose a couple of jewels like these in Amble would only further diminish its already fragile natural heritage.

Hugh Tindle, via email

The images show the collected litter, and a small skipper butterfly.

Petition launched for Freddy the dolphin



Photo: George Guthrie

We are trying to get a memorial statue of Freddy, a bottlenose dolphin that was a well known visitor to Amble during the late 80s to the early 90s.

You can see the petition here: <https://www.change.org/p/statue-for-a-dolphin-called-freddy>

*Debbie Vincent
via email*

Ed: See also the article on p2

Boatyard could become wildlife haven

It was disappointing recently to see another boat go from the WHC boat area at the back of Broomhill Street. There are only six left now including several in a poor state of repair. Instead of the boats, the area is becoming more and more of a rubbish tip. The increasing amount of debris and rubbish makes the area look dirty and abandoned.

Recent complaints from neighbours have resulted in the area being looked at by the Environmental Enforcement Office. What a reflection on the WHC and Amble as a community that it has come to this? Since their intervention all that seems to have been done is the pulling up of some buddleia bushes, arguably the least offensive occupants of the space and a wonderful home to wildlife in the summer.

Whilst nature is doing its best to fill the area with wild flowers and grasses, it is a pity that this

area continues to be so neglected by its human custodians. Isn't it about time that WHC, Town and County Council, local residents and other stakeholders get together to discuss creative ways of supporting WHC to manage this space in a way that enhances this part of the harbour? It might be a back lane but it is viewed by lots of people visitors and residents alike.

Some of us remember when the area was open and grassed over. If it was returned to this it would be an improvement and boats could still be stored there.

Alternatively, as has been suggested before, it could become a managed area for wild plants and flowers and the wildlife they attract. This is an opportunity for Amble to make another small contribution to climate change. Let's not waste the opportunity and allow this area to continue in its neglected state.

Broomhill St resident via email

Electric Bikes
 NOW Available for Hire

Unit 6, Coquet Enterprise Park, Amble NE65 0PE
 01665 713 448 07790 596 782
www.pedal-power.co.uk bookings@pedal-power.co.uk

THE MAD JAM WOMAN
 &
Pride of Northumbria

Award winning Preserves & Relishes
 Fourways One
 Bridge St, Amble NE65 0DR
 07766 857680
 Also available at the Seafood Centre
www.madjamwoman.com

FISHING TACKLE & BAIT

NORTHUMBERLAND SEAFOOD & HATCHERY
 Leazes Street Amble NE65 0FD
01665 713580

I recently saw a news article about the effects of the cost of living crisis on students, with 49% of students missing lectures and seminars to do paid work instead. One girl said that she was working up to 45 hours per week as her maintenance loan and university funding came nowhere near to covering her rent, groceries and other life expenses.

As ever, Twitter responded with love and kindness. "Rare to find a Brit who isn't workshy these days", one commenter said, whilst others still seemed to be unable to grasp the concept of 'crisis' altogether. "Swallow the pride and go ask your parents or whoever for help with money

if you're struggling" said one, whilst another added: "I know it's difficult, but prioritise your lectures". If only solutions were this easy to come by for everyone.

I'm lucky. I have a very decent maintenance loan this year and savings to rely on, but I still work all my weekends and, yes, I have skipped a lecture before to get a couple more hours pay. Lots of my friends have it much worse. The cost of living crisis has been awful to everyone, but landlords have taken the opportunity to raise rents on student properties to astronomical amounts for next year. We've all had to completely redefine what counts

as affordable.

It's true that many have it worse right now, or have had it worse in the past. Indeed lots of the comments were tales of how much people had to work in the 90s, 80s, 70s while they were in university, but they just put their heads down and got on with it. These people confuse me. Why, after experiencing hardship, would you wish that same hardship on the next generation?

These students are not weak for speaking out- they're brave. They're refusing to put their heads down and shoulder unfair burdens placed on them by an unfair society. We so often value hard work to the extent where we see asking for life to be easier



as a sign of weakness, but why shouldn't it be?

They are not saying that they are suffering most, they are just saying that they're suffering, and that they, like everyone, deserve better.

If we're busy falling into the trap of pitting ourselves against each other to see who is closest to the edge of breakdown, we fail to look up and notice who has brought us to the edge of breakdown in the first place.

Lily

Amble Links school conservation club



Amble Links School Conservation Club took part in the Climate Coalition 'Show The Love' campaign.

People across the country and all around the world are feeling the impacts of climate change and spiralling costs of living, but are united in wanting to see a safer, greener future.

This February, people from all walks of life used the power of green hearts to show decision makers that we want to see urgent action to tackle climate

change, protect nature and bring down bills.

We made our own green heart display with pledges to the planet. We left some blank hearts for staff and other children to make their own pledges too.

Some of the pledges: to use less plastic; to look after wildlife; to plant a tree or some flowers; to grow our own tomatoes this year!

We also sent a Show The Love postcard to our MP.
Lynne Russell

Would you like a free business promotion on the Bord Waalk website?

Would you like your business to be featured on the Bord Waalk website?

The listing will be free for the first year. This is an offer open to any business trading within the area of the sculpture trail.

Contact andrew@ambledevelopmenttrust.org.uk



Please join us on Easter Sunday
to celebrate the Resurrection.



10.30am The Radcliffe Club

Charles Road Amble NE65 0RA

A friendly, lively church with
contemporary music & an inspiring message.
Where everyone and anyone are welcome!

Find out more about us:

harbourlightschurch.com



Harbour Lights
Church

[harbourlightschurch](https://www.facebook.com/harbourlightschurch)



Not all men: why we should celebrate women authors



The school curriculum teaches us the wonders of male centric literature from the past- Shakespeare, Charles Dickens, F Scott Fitzgerald, George Orwell, (and I could go on). It's Shakespeare's birthday on the 23rd of April, so I encourage you to find female, queer and ethnic minority authors to celebrate instead. A few classic female authors that I love, or think should be more recognised:

Jane Austen- To be fair, she is probably up there with famous classic names like Shakespeare, but I still think she deserves to be praised. Pride and Prejudice is my favourite of her stories, with several others on my reading list. Celebrate her birthday on the 16th of December.

Maya Angelou- Both a poet and civil rights activist, Angelou's poems have a spectacular voice. She was kind of ruined for me when she came up on my GCSE language

exam, but we still love her. Maya's birthday is the 4th of April.

Virginia Woolf- Woolf wrote both fiction and non-fiction in her lifetime, containing themes of breaking traditional patriarchy. Her birthday is the 25th of January. Sappho- she was a Greek poet from times BC and Sappho is credited for being one of the earliest lesbians.

Evidence is inconclusive because of the time period she was writing in, but it's generally agreed she

had relationships with women. We don't have a birthday for Sappho, so just celebrate her at pride month.

Even if classics aren't your thing, it's important to remember you don't have to settle for a straight white man. Do your research and find other authors (or directors, artists, etc) that resonate with you. Happy birthday Shakespeare, but it isn't all about you.

By Ava

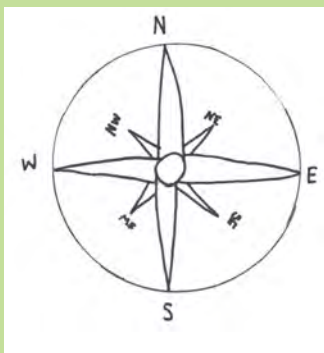
How not to get lost



My Duke of Edinburgh expedition (and how I failed)

In September last year, with cadets I did my DofE expedition- and failed.

How is it possible to fail you may be asking, well me and my team walked around the same mountain for 5 hours when we were only 20 minutes away from the start. But I think the universe was trying to give me a sign from the start because it took me an hour and a half to put a tent when the instructions said it should only take 7 minutes.



For the DofE you don't need to just do an expedition you need to do volunteering, physical, skills and the expedition. You must do a minimum of three months activity for each of the Volunteering, Physical and Skills sections, and plan, train for and do a two-day, one-night Expedition.

The difference is, this year my team will be different so I have a higher chance of passing because some of the people on my team were not very good (no offence (including me))
By Hannah

Thousands dead in Turkey



On the 6th of February 04:17 (local time), a magnitude 7.8 earthquake hit Turkey and Syria, 11m near the city of Gaziantep.

At the time I wrote this, there were over 49,000 deaths in total, 44,218 dead in Turkey and 5,914 in Syria, but the number could double. The country's president said it was the 'Worst disaster in decades,' and is apparently the worst disaster there in 84 years. It is also the largest earthquake in Turkey. Another magnitude 7.5 earthquake struck 12 hours later, apparently not an aftershock of the bigger earthquake before it.



More than 5,700 buildings in Turkey had collapsed, and nearly 200 people were arrested for poor building construction after the earthquake. 26 million people across both countries needed help, and in Turkey it is estimated that 1 million people are living in tents, and 80,000 people with injuries are in hospital. In Syria, it is estimated that up to 5 million people could be homeless.
By Grace

Video games vs board games

Since there's a new board games group opened up at the library it's got us thinking - what's better, video games or board games?

Board games tend to be played all together as a family in real life. However, video games tend to be played alone, but some are multiplayer, so usually when you feel like socialising, board games are better.

When you want to play with family and friends of all ages, board games are better and the rules are usually easier. Video games tend to be played alone and you can play them anywhere. And you can also play online at anytime with people who could be anywhere.

What do you think?

Here's a list of our top board games:

- Monopoly
- Cluedo
- Jenga
- Battleships
- Pictionary

Top video games:

- Pokémon white
- Hogwarts legacy
- Mario cart
- Minecraft
- Tomodachi life
- Crossing New Horizons

By Katie and Hannah

Help for lonely children



Lonely children are contacting Childline 15 times a day on average. The number of children under the age of 11 feeling lonely has increased 71% since 2018. Loneliness can have a huge impact on children's mental health.

In response to this, Childline has launched a campaign called 'Day in the Lonely' so children know their feelings do not need to last. The website includes three videos showing a day in the life of three young people and different ways in how they feel lonely, all of them are based on real life Childline calls. See www.childline.org.uk/info-advice/your-feelings/feelings-emotions/loneliness-doesnt-have-to-last/.

Poor mental health is the top concern when people call Childline, and has been for the past six years. Childline's trained counsellors hear from lonely children who feel that way, due to being left out of friendship groups and social media chats, whereas others say their loneliness stems from feeling bad about themselves and not liking the way they look. Many young people also feel that their friends and family don't understand them.

Children and young people can contact Childline for free, confidential support and advice 24 hours a day online at www.childline.org.uk or on the phone on 0800 1111
By Hannah

Earth Day (my birthday)



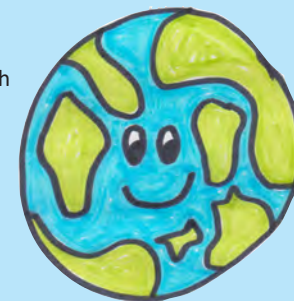
Every year on April 22, Earth Day marks the anniversary of the birth of the modern environmental movement in 1970.

Why is Earth day celebrated ?

Earth Day is an annual celebration that honours the achievements of the environmental movement and raises awareness of the need to protect Earth's natural resources for future generations. It's also my birthday!

What do you do on Earth Day ?

More than a billion people celebrate Earth Day to protect the planet from things like pollution and deforestation. You can take part in activities like picking up litter and planting trees, to make the world a happier and healthy place.



Why Earth Day began

In the early 1970s an American Senator created Earth Day as a way to force this issue onto the national agenda. Now it's celebrated world wide. See more at: www.earthday.org/earth-day-2023

By Katie

Welcome back puffins

The puffins should be here by the time you read this! Every year at the end of March, the puffins return to Coquet Island where they stay until mid-July. There will be over 30,000 puffins on Coquet Island, which is a bird sanctuary, no one is allowed to land there. There are 82,000 seabirds that live on the island on total, including kittiwakes, eider ducks, species of terns and fulmars! If you want to see them, you will have to go on a Puffin Cruise!
By Grace



Deinfluencing: The next big TikTok trend?



Influencers are everywhere we look, but nowhere more than TikTok. The app with over 1.5 billion users is known for its gross consumerism, and it's done irreparable damage to the planet and our society. But there's a new counter culture emerging, the self proclaimed 'deinfluencers'; they want to kill the trends and save your money.

#Deinfluencing has over 200 million views on TikTok, but what does it mean? Deinfluencers basically want to reduce the amount of money people spend on trendy TikTok products just because they feel they need it to fit in. They are encouraging a change in the way we see trendiness and what is a necessary purchase.

There are several different types of deinfluencers, those who want to cut consumption completely and encourage a minimalist lifestyle, and others who display cheap alternatives to the fashionable products everyone else is clamouring over.

Most deinfluencers also recognise the importance of reducing consumption for the environment, and whilst it's questionable whether promoting cheaper, more disposable products is the way to do this, as an overall they share simple ways in which everyone can help the environment by changing their habits.

Popular deinfluencing videos follow the lines of products I regret buying, honest reviews, how to shop intentionally, stop wasting your money on these products, and much more. If these videos get the same hype and views as the ones promoting the products in the first place, it's possible to see a future of more intentional consumerism that has a positive environmental impact.

Although, of course, not all influencers are demon capitalist machines, the culture that TikTok and other social media platforms have created mean that we are constantly being sold something, in the way of being told we aren't good enough. I would argue that deinfluencing

has already begun in the body positivity (and more general positivity) movement, which influences people to be more grateful for what they have and themselves, therefore meaning they are less likely to buy products that are advertised as 'fixing' you.

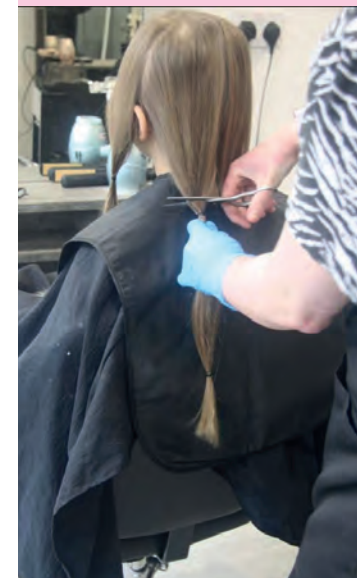
A wider societal shift is needed in this sense, towards a world that tells people, especially women, they are beautiful no matter what products they have and trends they follow.

Deinfluencers are on the right track, and it's an important message they are sharing. We need to be kinder to the planet and kinder to ourselves in order to overcome the capitalist brainwashing we are fed from advertising and TikTok.

So, next time you feel like you desperately need something because an influencer is promoting it, think: Is this worth my money? Is it worth the effect on the earth? Is it worth my time? The answer is inevitably no.

By Ava

Haircut heroines



Billie-jo getting her hair cut. Photo by Bart Rippon

Billie-jo Gladys Simpson made £575 on Just Giving in her bid to raise money for the Little Princess Trust and she has donated 27cm of her hair to be made in to a real hair wig for a child with cancer.

She was inspired by her big sister Felicity who has done this three times now, and has donated a total

of 107cm of her hair and raised over £1270 for the charity. Billie-jo turned 6 on 5 February and goes to Amble Links First School. Her sister Felicity is 11 years old and goes to James Calvert Spence, and plans on cutting her hair a fourth time next year.

Billie-jo had 10.5 inches (about 27cm) cut off by Andrea Louise Purvis at Salon AP on Fenkle Street in Alnwick on 18 February.

The girls' parents are very proud of Felicity and Billie-jo. Mum Katt said "Myself and my husband Joe, are so proud of how generous and selfless our two daughters are in doing something so amazing to help other little girls to regain their identity after losing their hair to cancer treatment and other childhood diseases."

Felicity said "Having such long hair that grows super fast is something most kids take for granted, but as long as my hair keeps growing I will keep donating it."

Billie-jo said she just wants to help make another little girl or boy feel like a Princess.

Space for shorebirds: protecting nesting birds

The mud flats of the Coquet Estuary play a vital role in supporting thousands of birds throughout the year. The marine creatures living within the nutrient-rich sediment are an essential food source for shorebirds. At this time of year thousands of birds are passing through Northumberland on their migration north, the estuary offers a place for them to rest and refuel before the next leg of their journey. The sheltered water also provides a place to hunt for food for many other species, such as eider ducks, gulls and cormorants, as well as terns, which are arriving in the county to nest, having spent the winter in western Africa.

Most of the shorebirds we have been observing over the winter have now left to breed in the Arctic Circle. However some have stayed in Northumberland to nest on sandy and shingle beaches. Ringed plover are in

particular need of our help, as their population is declining rapidly, driven by habitat loss, predation and increased disturbance.

In the coming months, we will be working with the incredible Coast Care volunteers to help protect as many ringed plover nests as we can along the whole of the coast. Pairs of nesting shorebirds form breeding territories rather than nesting in large colonies, mainly so that resources such as food are not shared between more than one family. This results in nests being spread out sporadically, so we need help to find these locations to ensure they are protected.

Nest protection sites will be appearing along the coast, accompanied by signage. They ask beach users to give them space, as they are incredibly sensitive to disturbance. If you see our wildlife rangers out on the coast, please do stop to say



hello and find out all about the nesting birds! You can also follow us on social media (search Space for Shorebirds on Facebook, Instagram and

Twitter) to keep up to date with the progress of the birds throughout the season. Thank you for giving Space for Shorebirds.

Exhibition: The Nature of Nests



Over a period of six weeks young people from Amble Youth Group explored the theme of nests. It is a universal theme, which lends itself to ideas about home and a sense of place. The nests project is part of the Bord Waalk Sculpture trail community engagement programme.

The opening event, an exhibition at Dry Water Arts Centre was held on 15 February. It was a joyous celebration of the creative capabilities of the young people and they are looking forward to developing the project.

Visitors to the exhibition made the following comments:-

“The photography is beautiful; I really enjoyed looking at all of the nests.”

“What inspiring use of found materials, careful thought in the making and thank you to the young people for explaining everything to me.”

“Wonderfully inspiring and such a professional approach to all aspects of the exhibition.”

“So beautiful and it was great to hear about the process, Congratulations to you all.”

“The nests are beautiful and the children were so welcoming and excited.”

“I loved the simplicity of the materials and how each nest is so different. Everyone has such a lot of talent.”

“Absolutely brilliant, a stunning exhibition and all so wonderfully different.”

Author Mike donates to Hauxley reserve

Northumberland Wildlife Trust's Hauxley Wildlife Discovery Centre at Druridge Bay have received an early spring boost.

Northumberland author and artist MiE (Mike Fielding) has donated £1,000 from the sales of his latest book: *The River Coquet* (which has proved so popular it has now sold out) and its associated artworks.

Mike hopes to raise further valuable funds for the Trust during 2023 at an exhibition of works from his forthcoming book: *The Sound of a Landscape*. This celebrates the Northumberland Coast through art, sound and the exquisite words of Cullercoats poet Harry Gallagher.

A valuable supporter of the Trust, Mike last year raised £450 from a tombola to help repair the damage to the Druridge Bay reserve caused by Storm Arwen.

Visitors to the site can usually meet him in the Lookout Café each Sunday. Now, with the onset of better weather, he will shortly be displaying his artworks and his specially produced interactive bird song guide outdoors.

Mike Fielding says, “Being on the Hauxley reserve and in

the Wildlife Discovery Centre over the past two years has been a wonderful experience. It is a pleasure meeting visitors from all over the world and it is comforting to know that a percentage of my sales has found its way into the ‘coffers’ of the Trust.

“My company Birdersmarket.com has been a constant supporter of wildlife charities over the past 20 years and it's a real pleasure to know that the results of my hard work s are being put to good use on a local level.”

Alex Lister, Northumberland Wildlife Trust's Druridge Bay Landscape Manager says, “We are delighted that Mike has once again taken time out from running his own business to selflessly help raise much needed funds for our work here on the reserve. He is a great example of how local people support our conservation efforts here and he is a huge hit with visitors to the site. If you haven't already seen his artwork, come along on a Sunday and take a look for yourself.”

More details of Mike's, sound art productions, artworks and publications will be found at <https://www.voert.digital/mie>

Richard's a winner at Amble Photographic Group

The recent years have been hard for many photographic clubs. However, thanks to the efforts of its committee and members Amble Photographic Group has emerged strong and thriving.

In a friendly atmosphere, it provides a varied and interesting programme with internal and invited speakers, monthly competitions with external judges, workshops and tutorials, and outside trips. Judges have often remarked on the quality of the work by members and the difficulty they have in choosing winners.

The most recent competition was the Joe Robinson Shield competition and the theme was "Flora and Fauna".

Harry Hall, who gave constructive feedback on every competition entry before announcing the winning images, judged the competition.

The winner was Richard Booth with his image of a red squirrel balancing on a log, entitled 'A mouth full of hazelnut'. The photograph was captured in Scotland last



Richard Booth's winning image of a red squirrel

September.

Second place was awarded to Peter Burnham, with his image of a little owl peering out of a hole in a tree.

Third place also went to Richard Booth, with an image of a butterfly in a flower meadow taken at the Hauxley Nature Reserve.

Highly Commended certificates were awarded to Celia Watson, Alan McCormick and Richard Booth.

Commended certificates were awarded to Peter Burnham,

and Gavin Wallace.

Further details can be found on the club's website (including images from all the most recent club competitions) www.amblephotogroup.com

If you want to improve your photographic skills, why not come along to one of our Friday morning meetings from 9.30am-12.00 in Trinity Methodist Church for a taster session?

For more information, contact the membership secretary Helen Holmes on helenholmes1947@gmail.com.

Could you help at the Puffin Festival?

We are looking for helpers at the Puffin Festival - could you be one of them?

We need people to help put up and take down flags and gazebos, and/or to assist the team tending some of the stalls.

The main festival is on Saturday 27 and Sunday 28 May.

Could you spare a couple of hours over the weekend to help out? For more information, contact Julia Aston: julia@ambledevelopmenttrust.org.uk or phone 01665 712929

Local businesses encouraged to get involved



Shoutout for stall holders for the Puffin Festival weekend (Sat 27 and Sun 28 May).

We welcome arts & crafts, environmental, food, etc. You can download a booking form here: www.amblepuffinfest.co.uk/get-involved.html

If your organisation or business is planning an activity during the main festival or in the half term week following the festival, let us know asap at the contacts above, and we can add it to the programme and website.

Expertise Wills and Wealth

PROTECT YOUR FAMILY ASSETS

Long Term Care • Third Party Challenges • Divorce
Business Failure • Sideways Disinheritance

LASTING POWER OF ATTORNEY in areas of
Property and Affairs • Health and Welfare
Make sure you have them in place while you're fit and healthy

WILLS Simple Wills • Trust Wills • Free Reviews

PROBATE Call us for Expert Help and Advice

PENSIONS Do you have pension pots scattered
here and there? Now coming up to retirement?
We're here to help you go through your options.

Ring Enid: 07772 182 130
for a **FREE CONSULTATION** in your home



Email: enid.eww@sky.com
Enid Wilson
Consultant
30 years of experience

CBSWorld

Complete Business Supplies



Printing Services

Leaflets • Booklets • Books • Newsletters • Posters
Carbonless sets and books • Fine art prints • Invites
PVC Banners • Foamex boards • Signage

www.cbsworld.co.uk

Unit 5 Elm Square, Lionheart Enterprise Park
Alnwick, Northumberland NE66 2ES

Tel: 01665 660022 Email: sales@cbsworld.co.uk





Reports from our County Councillors



James Calvert
Spence College
(New School)

NCC have finally committed to building and developing a new school for Amble and surrounding areas.

An investment of £36 million has been agreed, and will be used to build the very best modern learning facility our children deserve. Additionally it will provide new places to meet the needs of young people with Special Educational Needs and Disabilities providing creative, well-educated young individuals with hope and opportunity developments throughout their lives.

This new building must be at the heart of our community providing new classrooms,

laboratories, library, computer rooms and a place to play and chill out. It must give young people the entitlement to suitable learning provisions in a high quality building, of which they will be proud. This will do that.

We still have concerns regarding traffic and community use, which needs to be sorted out. We also need to ensure the delivery of all upgraded sports and recreation facilities: all-weather running tracks, floodlit 3G football pitch, multi-use games areas, a series of football and rugby pitches.

This new school will create a safe, sustainable and successful building giving our young people an inspiring learning environment that will meet their needs.

Terry Clark

Terry.Clark@northumberland.gov.uk 07779 983768

I am attending meetings to ensure that the new James Calvert Spence plans are the best that can be for our young people as well as the community. The plans are progressing well and following the recent public consultation are being examined to see if some of the concerns raised can be addressed.

The road layout at the current school area has received attention and will have more alterations when the school build is completed.

I have checked that there will be capacity to cope with more children in the Coquet Partnership as this is likely to increase with the number

Jeffrey.Watson@northumberland.gov.uk 07802 385367

of new homes in the area. The special educational needs element is most welcome to enable local children with various issues to get good facilities without having to travel great distances.

I am concerned by the growing numbers of covid cases in our area, it certainly hasn't gone away, please be careful and follow simple hygiene rules as much as possible.

Hope you enjoy Spring!
Jeff Watson

Parkinson's World Awareness Day

The local Parkinson's Support Group meet in Alnwick Rugby Club on the first Tuesday of the month from 1.30 – 3.30pm. Parkinson's World Awareness Day is on 11 April 2023 and monuments and historic buildings will be illuminated blue. Ron Bernstein, a volunteer for the group, approached Northumberland Estates and they have agreed to light up the Tenantry Column in Alnwick on that day.

Advertise with The Ambler

The Ambler is published six times per year and is delivered to every house in the town. We are recognised as an excellent example of a community newspaper, and we provide a trusted and dependable source of news and focus for Amble.

Contact Anna: editor@theambler.co.uk for more information on our advertising rates and dates.



We need your views on the draft Hauxley Neighbourhood Plan

We have prepared a draft neighbourhood plan informed by the feedback provided by the local community during 2020 and 2022. Our draft plan includes planning policies covering a range of issues which seek to protect and enhance what make our area special.

We need comments on the plan by 4th May 2023

Come along to the drop in event on Saturday 29th April between 10.30am and 12.30pm at Hauxley Village Hall to find out more.

The draft plan and supporting information is available on our website. If you do not have access to the internet, a hard copy of the plan is available on request from the parish council.

You can submit comments in the following ways:

- Use the online form available on our website <https://northumberlandparishes.uk/hauxley> or scan the QR code
- Attend the drop in event on Saturday 29th April between 10.30am and 12.30pm at Hauxley Village Hall;
- By email to: hauxleynp@gmail.com
- By letter to: Hauxley Parish Clerk, 14 Oswald Street, Amble, Northumberland, NE65 0EG



Jade Reynolds Parish Clerk and Responsible Financial Officer
Hauxley Parish Council
Email: hauxleypc@gmail.com
Website: <https://northumberlandparishes.uk/hauxley>

This section is written and paid for by Hauxley Parish Council

Could you support a child in care?

Volunteers sought to befriend and support children and young people living in care.

Nepacs charity has an exciting opportunity for anyone with a few hours to spare each month, interested in giving their time to support local children and young people who are living in care.

a bike ride, watching football or sharing a cuppa and chat. Most visits naturally take place at weekends, evenings or in school holidays when children are free.

Independent visitors are not professional care workers. They are adult volunteers, who can spare an hour or so each month,



The Independent Visitor service is a befriending scheme for children and young people between the ages of 8 and 17 years old. Provided by volunteers, the service is designed to offer each child the chance to build a trusted friendship with someone outside of their day-to-day life.

Each volunteer meets up with the young person once a month, over a period, doing things they enjoy together, such as going for

listening to what's going on in their life and offering support and friendship.

All volunteers receive full training and on-going support from the Nepacs team.

To find out the difference you can make, watch Max's story on the Nepacs YouTube channel at <https://youtu.be/oDSEMi8qXwo>

More information can be found on www.nepacs.co.uk or email IV@nepacs.co.uk



Hello everyone, let us start by dashing those winter blues away and welcoming in spring!

Investment Plan

We started off the year with a community workshop to build an Investment Plan for the town and at this stage would like to thank everyone who attended and brought ideas forward.

We needed innovative and inspirational ideas that will attract funding and continue to bring jobs and prosperity to the town. Once the Plan has been adopted by NCC, it will be available to the public.

Refurbishment at Welfare

The next formal consultation is to be on the proposed refurbishment of the MUGAs (Multi Use Games Areas) at the Welfare. NCC are submitting applications for up to 12 locations for either new or refurbishment of Playzones which are MUGAs by another name. Amble will be in the first tranche and if successful work

will begin in early summer this year.

I'm afraid this Ambler edition was too late for any contributions to the consultation but we did make the information available on the Ambler website, social media and leaflets to ensure the info was spread as wide as possible.

In addition we have been successful with an application to NCC for S106 funding to relay the rubber crumb surface on the childrens play area. S106 is the fund council's hold for developer contributions for community benefit, usually from housing development.

Neighbourhood Plan

Still on the community development aspect, we have so far received 60 responses to the poll in the Ambler asking if the town should initiate a Neighborhood Plan. This was the target we set as it is approx. 1% of the current Amble population.

This information has been forwarded to Amble Town

Council who are the responsible body for taking this forward. Discussions are ongoing.



Royal visit for Bord Waalk?

We are hopeful of a Royal visit to officially open the trail – more later once it is confirmed.

At the time of writing we still have one remaining sculpture to install on Horseshoe Hill. This sculpture has proven to be more difficult to fabricate than the artist imagined. However we have been assured it is nearly complete.

The app is just about ready to be released once all installations are done. We will also be printing leaflets because we are aware that not everyone wants or uses a smartphone.

We would also like to offer local /Amble businesses the opportunity to have their

business listed on the Bord Waalk website. We have a section called 'Make the most of your visit to Amble'. If you would like to be listed please get in touch, with the information you would like included.

Community orchard

Plans for the Orchard are currently on hold. While we have secured funding for more fruit trees it won't be released until later this year.

Contact us

Our job search facilities are now open from 9.30 – 11.30 each week day. If you would like to contact the Ambler or require a CV you can do so by ringing: 01665 712929 or emailing editor@theambler.co.uk or Julie@ambledevelopmenttrust.org.

Julia, all Trust staff and Trustees

julia@ambledevelopmenttrust.org
uk

CO OP Funeralcare

Our caring staff are here
to listen and advise you,
24 hours a day, 7 days a week



Coquetdale Cottage, Queen Street, Amble
Tel: 01665 710437

edie pebble
Pod 14 Amble Harbour Village



Beautiful handmade gifts,
vintage treasures and
nautical decorations

NORTHERN ZEN DOGS



Canine Therapy

Suitable for dogs who are:

- *Anxious *Chaotic yet Cute *Pessimistic
- *Have separation anxiety
- *Scared of fireworks or other noise
- *Fearful of other dogs or people *and more...

Contact Ali for a FREE 10 minute chat
07949 026374

Lionheart Cleaning
Commercial & Domestic Cleaning Services

Your One Stop Cleaning Service Provider

Our ever expanding teams of fully trained and insured operatives are insured and able to carry out all of the following aspects of Domestic and Commercial cleaning for you, or your business.

- | | | |
|------------------------|--------------|------------------|
| Carpets and upholstery | Conservatory | Pressure washing |
| Windows | Roofs | End of Tenancy |
| Gutters/Fascias | Commercial | Post Build |
| | Kitchens | General |

01665 713448 www.lionheartcleaning.co.uk



Amble Town

COUNCIL

Town: 3th April, 11th May (includes Annual Meeting)

Amenities: 30th March, 25th May

Meetings at 6pm at Fourways 2 Top Floor

EAST WARD:	Helen Lewis,	Craig Weir	WEST WARD:	David Bewley	CEN. WARD:	Kate Morrison,	Paul Dancer
Ian Parks,	5 Meadowburn,	(Chair/Mayor)	Vacancy x2	11 Brinkburn	Vacancy x1	3 Island View,	Wellbank
33 Warkworth	Amble	76 Priory Park,		Place		Amble	Victoria Villas
Avenue,	NE65 0PH	Amble		Amble		NE65 0SE	Amble
Warkworth.	07751 229 739	NE65 0HY		NE65 0BJ		01665 711191	NE65 0LQ
NE65 0TP		01665 712342		07525713086			pauldancer1998@btinternet.com

EDUCATIONAL NEW BUILD & CHANGES

It was exciting at long last to see positive ideas for this. The display gave a general impression of the development but this can be subject to alterations before final submission.

There will be a planning application - when that happens, we urge everyone to take a look at the NCC Planning Portal to see exactly what will be there and to comment if they wish.

ACKLINGTON ROAD

The 20mph limit to cover both schools here should now be in place. There will be interactive flashing speed signs to remind motorists. The original flashing sign there will be relocated to Percy Drive to remind everyone of the 30 mph limit there. The police, NCC and ourselves are getting many complaints about inconsiderate parking along Acklington Road - usually when matches are taking place at the Welfare.

JCSC have been approached, both in the past and recently, about opening their car park at these times but they have not yet agreed. Whilst there is no parking in the Welfare, motorists still need to be respectful about how and where they do park so that pedestrians are safe and the risk of accidents is reduced.

COUNCILLOR'S CORNER

King Charles has done us a great service by placing the emphasis of his coronation on volunteering. In these fractured and troubled times, it has become increasingly important for us to pull together to support one another, especially the most vulnerable.

Amble has a proud tradition of volunteering. For some it is informal, such as looking out for an elderly neighbour. For others, it is more structured, from providing sports tuition to helping out at the food bank. Sometimes it is a regular commitment, like a weekly shift in a charity shop; sometimes a one-off arrangement such as a litter picking event. The wide variety of volunteering opportunities means that there is something for everyone. While the financial gains are non-existent, there is huge payback from the mental and physical benefits.

One form of volunteering which can be particularly rewarding is serving as an Amble Town Council Councillor. The Council meets monthly and also works with other organisations to look at future developments to make Amble a town of which we can be proud. No two meetings are ever the same and new challenges are always emerging.

Some councillors have a long association with Amble and bring unparalleled knowledge about the town. Others are relative newcomers who offer different experience and skills. What they all have in common is a desire to work for the town and make a difference.

Currently Council has two vacancies and is encouraging applications. We don't require previous experience but, if you enjoy working collaboratively and being immersed in the community, we would love to hear from you - townclerk@amble.gov.uk.

Cllr: Jackie Turpin

LEISURE & RECREATIONAL FACILITIES

For some time Council have been asking for improvements in the above. Whilst better facilities for Sport are very welcome, it is not enough. There are many other activities which do not strictly come under the heading of sport but which are good for physical and mental wellbeing.

The town is expanding - however the majority of available venues now in the town are often booked and it can be a struggle to find somewhere for a new group to start. With the increasing population another venue could well be needed in the future. We have continually brought this up with NCC officers and their councillors and even drew the lack of venues to the attention of our M.P. on her recent visit.

Councillors have been to see some 'Community Hubs' with more planned, in order to view the space they provide, how they obtained it and what revenue streams they have to maintain their existence - the latter being of great importance.

Whilst it may be possible to get grants and funding to build or refurbish, there are very few areas of finance to keep a venue going other than the money from groups using it. It is hoped that with the information gathered there may be a steering group formed to see if the idea can be developed further. Get thinking about this so you are ready with your thoughts and ideas when it reaches that stage.

CULVERT

The repair work to the culvert which includes a diversion in the West Allotments area and the refurbishment of manholes has been delayed. When Council are notified with a new date, notices will be put up at the allotments. Every effort will be made to minimise disruption for plot tenants. The work in the cemetery compound will be carried out with respect and cease whenever funerals take place.

DOG FOULING

In the same week that we had praise for our responsible dog owners keeping open areas clear, we had complaints too about irresponsible owners who do not pick up after their pets! Whilst gentle walking is being encouraged as easy exercise for all, no matter what your age or limitations, please try to keep the green spaces and streets clear of fouling- and litter too.

WEST CEMETERY

The western boundary has now been planted with 50 trees from NCC's Treescape Fund. These are metre high saplings planted in a double row which will mature to form a colourful edge to the cemetery and be a haven for wildlife. They join the small 'whips' which were planted along the northern boundary last year with the help of volunteers.

The path between the top turning circle and section M which had deteriorated has now been removed, covered with top soil and will be sown to grass when the weather improves.

TOWN COUNCIL OFFICES, FOURWAYS 2, AMBLE. NE65 0DT Tel: 01665 714 695 www.amble.gov.uk

Email ask@amble.gov.uk Twitter: @AmbleTC Facebook: www.facebook.com/AmbleTownCouncil

Office hours: 10.30am-12noon & 1.30-3p.m. Monday to Friday Vicki Smith, Town Clerk Minutes available to view in Office or online

Amble artist goes back to school

An artist who was raised in Amble is returning to Amble Links First School, where she was a pupil in the 1970s, to run an art project with local children.

Katherine Renton will be working with the Year 4 pupils during the summer term, using art to explore the beauty, history and wildlife of our coastline. The project will coincide with a solo exhibition of her latest paintings at the Bailiffgate Museum in Alnwick. It is entitled 'Keep – Castles, Coast, Coal and Climate', which is inspired by the coastline where she grew up and still lives.

Katherine has planned the project in collaboration with the Northumberland Coast Area of Outstanding Natural Beauty Partnership, who are fully funding the project. The Northumberland Coast AONB was designated as one of England's finest landscapes in 1958, and runs from the Coquet Estuary to just south of Berwick. As well as producing a range of



Katherine Renton. Photo by Jim Donnelly

art work, the pupils will visit Katherine's exhibition, embark on sketching trips to Alnwick, Warkworth and Bamburgh Castle, and view local wildlife on a boat trip to the Farne Islands.

The project will also focus on climate change and the ways in which we can prevent damage to our environment and its wildlife. In Katherine's current work she creates images with paints that she makes from local seacoal.

This process was inspired by her move near to Shilbottle where her Grandfather was a coalminer.

'I began my series of watercolours soon after the COP 26 conference on climate change, held in Glasgow in Autumn 2021,' she explains, 'The summit was the first to commit to reducing the use of coal to protect the planet, and this struck me as particularly significant in a county with a proud history of coalmining – before we knew the damage that this industry would cause'. Northumberland now has a thriving tourism industry instead, thanks largely to its natural beauty, wildlife and history, but rising sea levels and extreme weather conditions could be disastrous for our coastline'.

Many of Katherine's paintings of the coastline are made using seacoal collected from the beach near to the school. This is where she also collects rocks, such as yellow ochre and shale from the eroded

coastal cliffs to create her colours. The school project will be called 'Northumberland's Colourful Coast'.

Paul Heeley, the Headteacher at the school commented, 'We're really excited that Katherine has asked us to take part in this project with her during the summer term as it will provide the children with a broad range of experiences and learning opportunities that we wouldn't otherwise have been able to fully fund through our own school budget. We're extremely grateful to the Northumberland Coast AONB for providing funding and can't wait to get started. We hope that working with a successful artist, who is also an ex-pupil of Amble Links, will greatly inspire the children involved.'

The 'Keep – Castles, Coast, Coal and Climate' exhibition is on at the Bailiffgate Museum from 28th March – 21st May, and is open Tuesdays – Saturdays 10 - 4pm.

Bath House artist crowned Woodhorn winner

This year has seen another success at Woodhorn for The Old Bath House Studios at North Broomhill, with all of the resident artists having work accepted into their annual Open Call.

This year's event is titled 'Wild Northumberland'. The success was topped off with the recent announcement that this year's Overall Winner is resident artist Gillian Lee Smith, for her mixed media piece, 'Roots Break Rock (Quarry Trees at Belsay)'.

Gillian's painting was selected from more than 230 artworks submitted for this year's Open Exhibition.

Gillian said: "I am surprised and delighted to be awarded overall winner for this year's Open Exhibition at Woodhorn Museum. This is my fourth time exhibiting in the show, and it just gets better year after year. I discovered the beautiful Belsay house, castle and quarry in 2021 and have been back many times. I sketch each time I am there and have become fascinated by the trees atop the quarry walls and the roots that have broken through the rock below. This award means a great deal to me."

Northumberland Open: Wild Northumberland runs from 18 February to 8 May at Woodhorn Museum.



'Roots Break Rock (Quarry Trees at Belsay)' by Gillian Lee Smith.



Amble Bowling Club: Open Days

Amble Bowling Club is holding open days on our outdoor green at High Street, Amble on Saturday 15th and Saturday 22nd of April. All are very welcome to come along and give bowling a try!

The event, which will run from 1pm to 4pm on each day (subject to the weather!) is open to anyone of all ages, from newcomers and novices to the more experienced players.

Tuition will be given and equipment provided – please wear flat shoes or trainers.

We are a very friendly club

with players of all standards from beginner to county level. New members are made to feel very welcome. Lawn Bowling is good fun and a perfect way to make new friends.

The club holds matches throughout the season, which runs between April and September, these range from casual rollups with other club members, friendlies with other local clubs, internal club competitions as well as competing in the local Northumberland leagues.

Amble Living History group

April 20 Eleanor George - Broomhill Colliery
 May 18 John Yearnshire - The Ellingham Village Burglary
 June 15 Peter Regan - Warkworth
 July 20 Liesbeth Langford - Childhood under occupation

Time: 7pm to 8.30pm
 Parking: yes Easy access: yes Format: Informal
 Entrance: £3 to cover meeting and refreshment costs
 Do I need to be a member – NO! Everyone welcome

Warkworth Film Club

We are delighted to announce our Spring and Summer programme. Please note that we are not scheduling a film in May as it is coronation bank holiday weekend. Our April, June and July films are all BAFTA 2023 nominees.

SATURDAY APRIL 1ST
BRIAN AND CHARLES

Brian lives alone in a remote village in the countryside. Something of an outcast, he spends his spare time inventing things out of objects found in his garage. Without friends or family to rely on, Brian decides to build a robot for company. 'Charles' is not only Brian's most successful invention, but he appears to have a personality all of his own, quickly becoming Brian's best friend and opens Brian's eyes to a new way of living. However, Charles creates more problems than Brian bargained for.... (2022 1h 30' Cert PG).

SATURDAY JUNE 3RD
AMSTERDAM

Starring Christian Bale, Margot Robbie, and John David Washington, the film features an ensemble cast including

Andrea Riseborough, Taylor Swift, Matthias Schoenaerts, Rami Malek, and Robert De Niro. The story is based on the Business Plot, a 1933 US political conspiracy, and follows three friends who reunite after WWI and seek to uncover the plot following the mysterious murder of a retired US general. Part drama, part dark comedy and very, very stylish. (2022, 2h 14 Cert 15).

PLUS Sat 1 July: Moonage Daydream & Sat 5th August: The Full Monty.

* No need to book – seating is plentiful – Warkworth War Memorial Hall, 40 Castle Street, NE65 0UN

* All welcome – £5 donation per person, cash bar and doors open 7pm

Films start at 7.30pm
 For more information call Anna on 07758 253104 or anna.wiley@cantab.net
 Or check out our facebook page www.facebook.com/warkworthfilmclub

Or view the film trailers on the War Memorial website www.wwmh.uk/cinema.html

Warkworth Memorial Hall concerts

On the 30 April, Fifi la Mer (accordion and voice) and Oliver Wilby (clarinet, saxophone and accordion) present a journey through 100 years of French music from Offenbach to Gainsbourg.

On the 13 May we have a nine piece jazz band (The House of the Black Gardenia) providing

a heady brew of 1920s jazz and blues rarities and authentic original compositions flavoured with the macabre and the mischievous.

Tickets are limited and must be booked in advance. See the hall's web site at wwmh.uk for further information.

Board games group

Come and join a new board game group in Amble library. Friday mornings at 10.15am.

Have a cuppa and play board games old and new. This

promises to be a lot of fun! All welcome.

Amble library, Middleton St, 01665 710419
amble.library@northumberland.gov.uk

Dancing in Alnmouth

Alnmouth Ceilidh/Barn Dances are back at the Hindmarsh Hall, Alnmouth NE66 2RX

Starting Tuesday 21 February 7.00pm – 9.30pm and every third Tuesday after that.

No experience necessary, individuals and couples will be most welcome.

Well-known caller Mike

Jevons will guide everyone through the dances, some new and some old favourites.

Bring your own drinks and glasses £5.00 admission at the door.

Dates for your diary 28 March, 18 April, 16 May, 20 June

Further information from 01665 830330

Lent and Easter in Amble

Everyone is welcome, please do come.

Lent Course

"How to read the Bible" – looking at Old Testament and Epistle readings for each Sunday following the course date.

Tuesdays at 2.30pm at Ann's home: 7 Newburgh St Amble
 28 Feb 7 March 14 March
 21 March 28 March

Experience Easter

Week beginning Monday 20 March Amble school children will be hearing and seeing the Easter story played out in St Cuthbert's Church. Come and join in the dressing up and story telling round special scenes in the church. Contact Penny: penny@stcuthbertsonline.com

Shared Services

Stations of the Cross
 Wednesday 8 March 7.00pm at Sacred Heart Church

Compline (Night Prayer)
 Wednesday 15 March 7.00pm at St Cuthbert's Church

Coquet Churches Together 7.30pm Wednesday 29 March at Trinity Church

Holy Week

Good Friday 7 April
 Celebration of the Lord's Passion 11.00am at Sacred Heart Church

Good Friday 7 April
 Witness on the Town Square 11.00am Hot Cross buns after at Trinity Church

Easter Day 9 April
 Parish Communion 0930am St Cuthbert's Church
 Sunday Service 10.00am St Mark's Church at Dry Water Arts, St Mark's Ct, Wellwood St.

Sunday Worship 10.30am Trinity Church
 Mass of the Resurrection 12 noon at Sacred Heart Church
 Sunday Worship 4.00pm Hauxley Chapel. Low Hauxley.
Coquet Churches Together wish you a blessed Easter.

Wildlife group returns

Northumberland Wildlife Trust's Hauxley Wildlife Group is back following a break of three years, thanks to support from players of People's Postcode Lottery.

The group held its last meeting at the wildlife charity's Hauxley Wildlife Discovery Centre a week before lockdown in March 2020.

Now, three years down the line, the group has thrown the doors of the Discovery Centre's Community Classroom open once more with a programme of free walks and talks between now and the end of the year.

Rob Drummond, Northumberland Wildlife Trust's Beelines Project Assistant kicked off the meetings again with a talk on the importance of bees and why they need to be protected.

Prior to lockdown, the group had in excess of 30 people

attending its bio-monthly talks and workshops so the Hauxley team is confident that once people realise the group is back up and running, they will be flocking through the door.

Peter Parsons, Northumberland Wildlife Trust's Hauxley Wildlife Discovery Centre Visitor Assistant says: "The Hauxley Wildlife Group is a great focal point for wildlife lovers in the area, so, it was a real blow when we had to close our door because of covid. But now, thanks to players of People's Postcode Lottery, the group is back. I cannot thank them enough for bringing our old members back to us whilst, at the same time, giving us the opportunity to welcome new people into the group. It is free! All you have to do is log on at www.nwt.org.uk/ events, to book a place and come along."

New Strips for Amble U9s and U12s



FC Amble Juniors u9s would like to thank their sponsors: Taj Mahal restaurant for the blue strip, St. Martins hairdressers for the yellow strip, Kelly Construction for winter coats, and our match day sponsors Robbs Autos, Terry Vickers, the

Blue Bell and Andrew Charlton. We couldn't do what we do without all your support.

The u9s have made it to the semi-final of the cup. These boys have worked so hard in training that it's showing on the pitch. The improvement over the last



six months has been great.

FC Amble u12s are top of their league and through to the semi-final in the cup. We are so proud of how much this team has developed over the last six months. We would like to thank our sponsor, GV Engineering for

sponsoring both of our strips.

Thanks also to everyone who has supported the boys financially or practically. You are all amazing and we couldn't do what we do without all your help.

Sharon Chambers

Rotary Amble and Warkworth News



Thanks to the generosity of the residents of Amble, Warkworth and the surrounding areas, the Rotary Xmas sleigh raised a total of £2,800.

This impressive sum was raised despite the Covid restrictions that prevented door-to-door collecting. Special thanks to Morrisons in Amble for allowing the Xmas sleigh collection point outside the store.

Discussions are ongoing to identify and award funds from the Xmas sleigh collection to local good causes and organisations, in particular to groups who have not already benefitted from other grants and sources of funding. Watch this space for further news of the distribution of the Xmas collection fund.

In the light of recent tragic events in Turkey and Syria, members are also looking at

the most effective ways to raise and donate funds that support effective relief efforts.

In other local Rotary news, members ran a Rotary stand at the recent Warkworth Green Matters Community Day at the Memorial Hall on 14 January.

A range of interesting after dinner speakers have been arranged for forthcoming meetings. These include a talk on climate control by Hazel Scurr from Northumberland County Council, as well as a talk by Phil Derry on his memories of Berlin in the Cold War (pre the fall of the Iron Curtain)

Other social events planned include a whisky tasting evening, as well as a planned outing to the new Ad Gefrin distillery in Wooler.

For further details contact: www.ambleandwarkworthrotary.org or via the Rotary Amble & Warkworth Facebook page.

Amble Lifeboat Fundraisers

The Amble Lifeboat Fundraisers are here keeping you informed of our activities.

Our next coffee morning will be held on Easter Sunday 9 April. Along with the delicious cake and drinks we will be having an Easter Bonnet competition, decorating an Easter Egg as well as other small activities. Look out for further details for entering.

A date for your diary is Friday 12 May at the Radcliffe Club for our 'May Day Hop'. Dancing and fun with a disco and band.

Northumbria Easter Egg run

Watch hundreds of motorbikes drive through Amble on their annual Easter Egg run.

The event starts at Woodhorn at 11am on Saturday 8 April, and the bikes visit Ellington, Amble, Acklington, Stakeford, Bedlington and Blyth.

The bikers will drive down Queen Street to the Harbour where they will stop for a break.

All Easter eggs are donated to children in North East hospitals, and all cash raised goes to Northumbria Blood Bikes.

Easter Egg run is supported by The Infidels MCC

Final event together for Bath House

The Old Bath House Studios is undergoing a number of changes. This summer Helen Grierson's Glass Studio will relocate, and Paul Henery's Niche Gallery will close.

Our Easter Open Studios, on Saturday 8 and Sunday 9 April, will be our final event in the building. The rest of the artists will remain at their studios in the building for the foreseeable future. Future events and exhibitions will be held elsewhere in the near future, with the same

friendly faces.

Deepest thanks to the public who have supported us in our endeavours to establish an artistic community. We have hosted workshops for people with dementia, events in support of the Newcastle Women's Shelter, and forging partnerships with local schools. Our open studio events have been successful. We plan to continue to grow the community we have developed, and we hope that you will join us too!

Poetry, birdsong and a soundtrack to our coast

Katrina Porteous is a renowned poet, historian and broadcaster, and is President of the Northumbrian Language Society. She has written a series of poems for the Bord Waalk trail, available on the app.

She and sound artist Geoff Sample collaborated on six podcasts called 'The Bird Roads', based on sites from Low Hauxley to the Warkworth estuary, each emphasising different habitats and birds, with the intention of leading listeners to connect more deeply with the landscape.

Katrina told us: "For me, writing always begins outdoors. My first inspiration was the sounds and sights I experienced along the walk. Over the Covid year I walked the route in different seasons and weathers, taking notes. I also listened intently to Geoff's field recordings. Secondly, I read about local history, learning about Hauxley's Bronze Age past and prehistoric human footprints, Amble's coal mines, railways and staithes, and Warkworth's medieval harbour. Then I used my notes as a 'quarry' for my poems, looking for words that have sounds in them which echo the call of a particular bird, such as a curlew or a redshank.

"Geoff and I wanted to include human voices, and especially voices from Amble. This was my third source



Katrina Porteous, photo by Joe Grabham

of inspiration. Normally I would have accompanied Geoff to record these interviews; but because of the pandemic, Geoff sent me his recordings electronically. Over many telephone and email conversations, we were able to exchange ideas and put the podcasts together.

"The birds we live alongside are a window into our wider relationship with our environment. In our podcasts their migration becomes a metaphor for the interconnectedness of our planet. Against thousands of years of human history and millions of years of geology, we consider the impact of human activities: species loss, plastic pollution, our changing climate. At the same

time, birds help us to articulate something almost inexpressible about the human spirit: its ability to overcome adversity in the freedom of flight, and the joy of song."

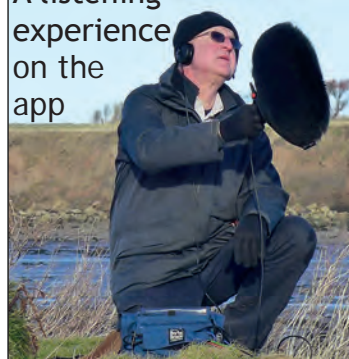


Geoff Sample (above) told us: "I've been recording the birds and soundscapes of the coast here for over 30 years now, and I've known Katrina for a good

while, though we hadn't really worked together on any major project. So collaborating on the series of podcast pieces for the Bord Waalk, weaving together Katrina's poems with the birds and other voices of my home turf, was really quite cathartic. But also with a strong sense of responsibility - as we both love these places and desperately wanted to do them justice.

He added, "I hope that maybe 'The Bird Roads' makes people think a bit more about sound in the open environment - how rich the bird soundscapes we have here are, even the calls of the common old Canada geese heading over the town in the evening, and how easily lost to the rising tide of noise pollution."

A listening experience on the app



Chris Watson's field recordings have been used by documentary makers all over the world. For the Bord Waalk, he worked alongside artist Alec Finlay to record birdsong for Sea Pie and a Dokie's Egg, which accompanies the Dokie's Egg sculpture along the Coquet estuary.

Chris (pictured above) told The Ambler: "I composed the work as a response to Alec Finlay's seasonal poems. They are a series of short

sound stories featuring the wildlife sounds that can be heard along the river Coquet, around Amble and out on Coquet Island over the course of a year."

The recordings were described by Matthew Blackwell on Bandcamp: "In addition to an impressive body of solo work, Watson is sought after for nature documentaries with David Attenborough and others. Watson's recordings of birds in and around the port of Amble, England accompany Finlay's sculpture of a dokie's egg commissioned for the town's "Bord Waalk" art trail. Birds from throughout the year are represented in the recording and identified via a poem written by Finlay.

The album is a crash course in ornithology, remarkable for the clarity of the birds' songs and calls. As a listening experience, the sheer variety of sounds, from the stonechat's clacking to the eider's bizarre whooping, continually surprises. Sea Pies and

a Dokie's Egg is exemplary of his abilities as a field recordist and as a wildlife expert."

John Kefala Kerr (pictured right) has created a piece in response to his visit to Amble and especially for the Little Shore. He told us:

"My piece, Sanctuary, draws connections between the avian and the human by transforming people's singing voices into 'birdcalls' and birdcalls into human-like vocalisations. The result is an audio work scored for a hybrid ensemble of singers, musical instruments, digital sounds and an unlikely chorus of people and birds.

Sanctuary offers Bord Waalk visitors the opportunity to sit at the Little Shore and reflect on the things that birds and humans share in terms of how each has a common need for a safe haven. Technically, the soundtrack employs simple digital tools to alter the pitch and duration of audio material—bringing birdcalls



into the human vocal range and sending human voices up into the birdcall register. Sounds have been gathered from a variety of sources, including recordings of local people whose 'birdified' voices form part of the sonic texture."

Anna Williams

The Bord Waalk app will be available soon. Technical issues with the last sculpture have delayed the launch.