



# *The Ambler*

Amble's Community Newspaper

Issue 143 Dec 2023/Jan 2024

## Lights, Christmas, Action!

All the action at Amble's  
Christmas Lights Parade  
See back page



Four year old Amelia  
met Santa and his  
cheeky Elf at the  
Christmas Lights Parade



## Housing development resubmitted for Braid Hill

A housing development for Braid Hill has been resubmitted by Northumberland Estates, after they withdrew a previous proposal.

Described once again as a 'Lifetime Neighbourhood' the plans comprise 96 residential units which include a supported living block, and a mix of two and three bedroomed houses.

One main difference to the previous plans is that access to the development would come via Riverside Park, not across the Braid.

The previous proposal was withdrawn after planners had indicated it would not be approved.

Since then Northumberland Estates and NCC have been



Full plans can be seen on NCC's website: Ref 23/04183/FUL

working on a re-designed development, which includes moving the Independent Supported Living Apartments to the eastern end of the site and updating the design to reduce

scale and massing.

Northumberland Estates claim the Amble area has a significant need for independent supported living accommodation. The residential

block will include 58 one and two bedroom apartments plus staff facilities. There are to be 40 two and three bedroom houses. The residential units will also include affordable housing.

Northumberland Estates' development planner Guy Munden said: "Supported living promotes independence by enabling people to live in their own homes.

"Despite widespread support for the original planning application, some residents expressed concerns about the loss of open space at the Braid.

"In the new application, we have addressed those concerns in full, providing alternative access through the existing residential estate."

## Plans for new school building given the go-ahead



The new school building for JCSC

Plans for Amble's new school were given the go ahead at Northumberland County Council's strategic planning meeting in November.

Last year, NCC agreed a £36.6m investment in all the schools in the Coquet Partnership, which would include a new building and renovations to Amble Middle School. The educational system will also move from the current three-tier, to a two-tier system.

The new building will accommodate 731 pupils aged nine to 18 years, and the old Amble Middle School will be renovated to provide for primary school pupils and a new outreach site for Barndale School, thereby increasing provision for pupils with special educational needs.

Plans for the new state-of-the-art school building were unveiled to the public at a

consultation in January. At the time, the council highlighted that it was their intention that the school would be 'net carbon in operation'. However at the planning meeting it appeared that this was unlikely to be the case.

The much vaunted upgrade to the running track was also dropped. It was acknowledged by planners that this issue had been raised by a number of members of the public, including members of the running community. However they pointed out that Sport England had raised no objections to removing it, and there had not been an identified need for it in this particular location. In addition they said the school would not have been able to manage the track effectively.

Floodlighting until 11pm was also questioned and it was

agreed to consider reducing this until 10pm. Access to the sports facilities and parking will be provided by the school, and a



Neil Rodgers spoke at the meeting

community use agreement will be set up to ensure the prices will be in line with other similar facilities in the area. In addition, further education classes would be offered to lifelong learners in

the community.

Speaking at the meeting, JCSC head teacher Neil Rodgers explained the need for the new facilities.

He said, "Amble and the surrounding villages have lots of new housing and the population continues to grow, bringing new families to the area. Those new families, I believe, need education facilities that are fit for the modern age.

"What we currently have is a building finished in the early 1980s that has not seen much investment since then. What was thought of as good education provision back then has not really stood the test of time.

"Our children – your children

– deserve better. Now is the right time to invest and make sure our schools remain good."

The plans were unanimously approved by councillors.

*Anna Williams*



# Council proposal to turn garages into affordable bungalows

Concerns over the Crepossession of council garages to create social housing have emerged, and a consultation event is planned to discuss the situation.

Residents of Amble are being asked to give their views on a proposed new affordable rented housing scheme which would provide 15 new bungalows for the town.

The proposal is being put forward by Northumberland County Council to build the bungalows on council garage sites at St Lawrence Avenue, Kennedy Road, Alndale, Andrew Drive and Windsor Terrace.

The bungalows will be predominantly two bedroomed and designed so that they do not overlook the existing surrounding residents.

Some residents have already been given notice to quit their garages, despite the relatively early stage of planning.

Many have voiced concerns at the one month notice they were given, although NCC have pointed out they were only legally obliged to give one week's

notice.

Residents living in the area will be invited to comment online and to attend a drop-in session on 12 December between 5pm - 7pm at the Radcliffe Club Charles Road, NE65 0RA. Council officers and an architect will be on hand to answer questions and discuss the plans.

The online consultation will go live on 27 November and the council will be writing to residents in the immediate locality to let them know.

Northumberland County Councillor, Colin Horncastle, cabinet member with responsibility for housing said:

"We know there are residents in Amble who are looking to down-size from larger properties but who want to stay in the town and live independently, close to their neighbours, family and friends - so the affordable rented bungalows will help to fill this need.

"We welcome residents' views and hope that people will take the time to share them with us."

The proposed scheme has the



support of Amble Town Council, Amble Development Trust and the local county councillor.

Councillor Horncastle added:

"We have thousands of people on our Northumberland Homefinder register who are desperately looking for an affordable, accessible home to live in.

"The council is working hard to find suitable brownfield development sites to provide more affordable homes for local people in housing need. Subject to them being deemed appropriate in planning terms, the old garage sites are one such potential location where we are exploring the development of affordable rented bungalows."

"The decision to terminate the garage tenancies wasn't an

easy decision but sometimes we really have to make some hard choices – and this unfortunately is one of them.

"We also understand it may not be a popular decision with the garage tenants and we are committed to working with them where help is needed. However, providing more affordable housing really must be our top priority."

One resident who has now given up her garage told The Ambler, "They have taken the garages back despite the fact they have not yet even submitted any plans for the bungalows. If planning is refused, which it might be, will this just be unsightly unused patches of land down at the bottom end of Amble?"

SHOP

# Christmas

WITH MOCHA MONDO

**It's Christmas at Amble Harbour Village**

We have curated a selection of gifts and bundles filled with delicious, locally made treats this festive season. With stocking fillers from just £2.40, we have a gift to suit any budget. Not sure what they like? We offer gift vouchers too!

You can visit the Mocha Mondo Pod at Amble Harbour Village or our Roastery Shop in Coquet Enterprise Park, Amble to browse our range of Christmas products.

Visit our Christmas Gift Shop Online at

**MOCHAMONDO.CO.UK**

**Mocha Mondo Pod**  
Open 7 days a week  
(Please check online for our current hours)  
**Roastery Shop**  
9am-3pm Mon - Fri

**Northumberland Gift Box**

**Christmas Blend is Back**

**Spirit Infused Fudge Selection box**

**Roasted Nuts & Nut Butters Gift Set**



# Remembrance Day 2023



Amble was blessed with sunshine for its Service of Remembrance, and a good number of people turned out to pay their respects. The Exhortation was given by David Shoemaker and the Last Post by Ron Creasey. After observing a two-minute silence, wreaths were laid on behalf of the King, the Town and County Councils, the Armed Forces,

local organisations and individual tributes, while Bev Palin played a lament on the Northumbrian pipes.

A short service was conducted by Coquet Churches Together and then a parade, led by the Amble Detachment of the Army Cadets, marched up Queen Street to the Roman Catholic Church for a further service.

*Vivienne Dalglish*

Above and below: Photos by Andrew Mounsey

Right: Children from Brambles and Amble First School gathered for a service at the clock tower. Led by Rev Velda Nicholson, the children observed a two minute silence, then read from 'In Flanders Fields', said prayers and laid their handmade poppy wreaths. Photo by Anna Williams





## News from Coquet Medical Group

There are a few staff changes as Dr Alison Oxby retired at the end of October. Locum cover will be supplied by Dr Hartley as Dr Katherine McConnachie goes on maternity leave.

The staff are working hard to deliver Covid and flu vaccines, prior to last week's clinic, 890 Covid and 2686 flu vaccinations had been delivered. Covid vaccination supply has been intermittent to the surgery, however clinics are also available

elsewhere in the local area.

Vaccinations against Covid and flu are regarded as very important and patients are encouraged to take up the offer of vaccination if eligible, either at the surgery or elsewhere.

The practice is currently looking at working to improve the efficiency of our processes, to enhance the service that is available and provide wider patient care.

It is recognised that getting

an appointment is still sometimes not easy. The team are working on this but the telephone booking at around 8 o'clock in the morning is not perfect.

Appointments can often be available if people are able to contact the surgery a little later in the day, and for non-appointment queries, calling or visiting the surgery mid-morning or mid-afternoon can result in a shorter wait.

Efforts continue to try



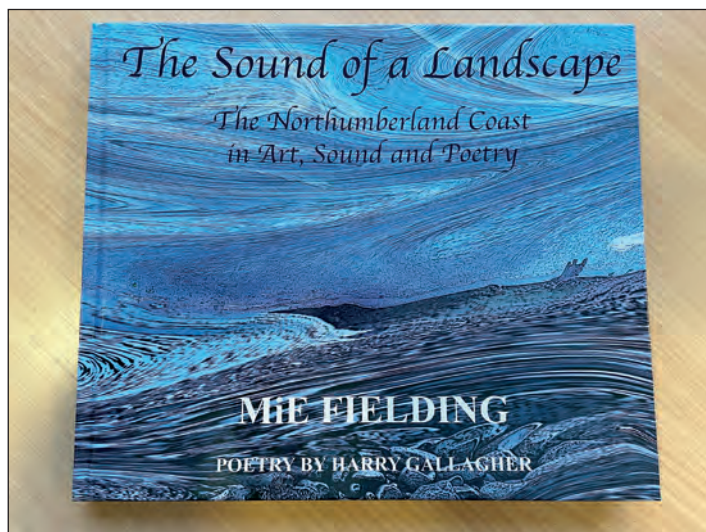
and improve the system and the Practice listens carefully to the Patient Participation Group who meet quarterly with representatives of the surgery.

## New book: *The Sound of a Landscape*

The Sound of a Landscape - The Northumberland Coast in Art, Sound and Poetry, traces the coastline from Marshall Meadows, just north of Berwick-upon-Tweed, on the Scottish border, to North Shields fish quay.

The 100-page hardback features Mike's evocative and unique artwork, complemented by the wonderful words of Cullercoats poet Harry Gallagher. Following the success of previous books, *The River Coquet* and *The Closest Thing to Heaven*, Mike has taken his passion for the natural world and its sound a step further by including QR codes for many of the landscapes featured in the book. This allows the reader to enjoy 'Ambisonic' sound recordings of the locations via headphones, giving an immersive 'being there' experience.

As a lifelong naturalist, I've drawn and painted birds since I was around six years old. Over the past thirty years I've recorded the sounds of Northumberland's birdlife, so it was a natural progression to try and capture



the overall sound and ambience of our beautiful coastline. My passion is 'sound art', so the book gave me the opportunity to include two specially written pieces. I got to know Harry through his poetry for my 'Aves Elektron' project, his words have everything - humour, sadness, hope and love, but above all, a Northumbrian vigour which brings the book to life'.

The Sound of a Landscape ISBN 9781916838123 Hardcover published by Voert

Digital is available at local bookstores, online retailers such as Waterstones, Amazon etc priced at £24.99 + p&p or direct from <https://www.voert.digital/the-sound-of-a-landscape>

The book and its associated artworks will feature at a special exhibition at Newcastle City Library from 14 December and will run for one week.

Further information: [www.voert.digital/mie](http://www.voert.digital/mie) [www.harrygallagherpoet.wordpress.com](http://www.harrygallagherpoet.wordpress.com)

## New art events met with positive reception

Organisers of the new series of art events being held at The Dovecote Centre in Amble say that they've been thrilled with the positive response from the local community.

Referred to as 'Crits', they take their name from a common art school practice, where artists of all different backgrounds can come together to share their work with members of the public and offer up constructive feedback.

Two events have been held so far. Just under 30 attended, and shared a wide range of different media, including paintings, prints, photographs, collages, mosaics and metalwork, as well as a special screening of two films combining poetry and experimental music.

The Crits run on the last Tuesday of each month from 7-9pm and are just £2pp for entry, with hot refreshments provided.

Anyone interested in attending can just turn up on the night, and anyone who would like further details or wish to be added to the mailing list should contact [dovecotestreetshow@gmail.com](mailto:dovecotestreetshow@gmail.com) Venue address: Dovecote Centre, Dovecot St, Amble, Morpeth NE65 0DX

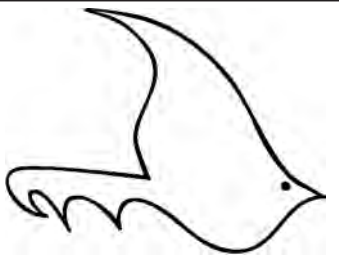


TELEPHONE ORDERS WELCOME  
01665 710 442  
MONDAY TO SATURDAY: 11.30AM-9.00PM SUNDAYS: 11.30AM-2.30PM  
\*\*\*\*\* NORTHUMBERLAND COUNTY COUNCIL  
1 BROOMHILL STREET AMBLE NORTHUMBERLAND NE65 0AN



Make it look pretty again!  
**Maintenance and Design**  
- weeding  
- grass cutting, edging  
- planting, flower potting  
- hedge trimming  
- pruning  
- landscaping  
- paving, fencing  
**STANTON**  
**Coast & Country Garden Service**  
01665 798543 **AMBLE** Visit us on Facebook





## The Ambler

Fourways 2, 6 Dilston Terrace  
Northumberland NE65 0DT

Tel: 01665 712929

www.theambler.co.uk  
editor@theambler.co.uk

Facebook: TheAmbler

Twitter: AmbleByTheSea

YouTube: AnnaAtTheAmbler1



### Editorial Team:

Vivienne Dalgliesh, Norma Hinson  
Ian MacKarill

Editor: Anna Williams

### Thanks to:

Mark Beswick & The Artogرافي Crew

### Distribution:

Charlotte, Wendy, Lorraine, Bryan  
Ian, John, Richard

### Printing:

CBS World, Alnwick

Would you like to join  
The Ambler team? We welcome  
contributions and help from anyone  
who would like to volunteer.

DONATE TO THE AMBLER  
via our website or this QR code



Thanks to all our contributors,  
sponsors and advertisers:

Community Foundation - Coquet Fund  
Rotary Club of Amble and Warkworth



The Ambler is a proud member of  
the Independent Community News  
Network

The Ambler is a project of  
Amble Development Trust



The Ambler is printed six times per  
year. The views expressed in The  
Ambler and on our website are not  
necessarily those of  
the Editorial Team

### 2024 Submissions dates:

#144 - 5 Jan	#147 - 21 Jun
#145 - 23 Feb	#148 - 30 Aug
#146 - 19 Apr	#149 - 1 Nov

## Season's greetings to one and all

It's December already! How did that happen? The Christmas Lights and Procession have just swooped past (p1, 24); it feels like the year has flown by. We've had planning applications come and go (p17), and return (p2), and the School plans have now been passed (p2) Speaking of new,

please welcome our latest new members of Artogرافي, who are getting up to speed and giving us their take on local and national issues (centre pages). Young people feature throughout this issue, (p9, p11, p17, p19, p20) showing their kind hearts and thoughtful nature.



We hope you all have a great Christmas and New Year - and if you appreciated The Ambler this year, perhaps you could donate us something via Paypal (you don't need an account). Details are at the top of our website or via the QR code in the green box on the left of this page.

## WHAT YOU SAY...

>> more letters on p8



Amble sea monster: a force of nature by Bernadette Redpath

### Trees at the A1068 roundabout

I really do hope that Persimmons will follow Tom Lloyd's advice (*Letters p8 #142*) and allow the woodland to stay as it is.

The trees were very densely planted and consequently have grown tall and spindly but like any other patch of vegetation such as the shrubs recently removed from Ivy Street or this small area of woodland, these places develop their own eco-systems and over time become home to a variety of wildlife.

Although the A1068 wood has very little commercial value the predominant Scots pine and the few broad-leaved species are very valuable to several species of birds.

The song thrush is now much less common in Amble, but come early February this is one of the few places left where you can still hear its strident song.

A month later in March and the calls of the chiffchaff can also be heard above the traffic

noise. This is usually the first of several migrant warblers which come to the area to nest and rear their young.

In late April the delicate cascading song of the willow warbler competes with other species from the woodland's edge. There are many other resident birds which are to be found here over the course of the year. Migrant thrushes arriving in autumn such as fieldfare, redwing and blackbird sometimes pause here after crossing the North Sea to rest and to feed on the haw berries on nearby thorn bushes.

This is definitely a place worth saving given how few trees there are around Amble and the amount of wildlife that can be found here. I do hope that Persimmons can be persuaded by Tom Lloyd to reconsider their plans and leave the wood alone.

Hugh Tindall  
via email

### Curiosity thanks

Thank you to everyone who supported our fundraising day for Amble Lifeboat on 4 November. We had a blast! We are waiting for the final count from Lifeboats but we raised £162.50!

Special thanks to Marie, Cat, Sandra and Steve for gifting their time on the day.

A big thank you also to Louise, Laura from Glamble, Julie from juliemosaics, Shaun from Tulip Design, Judith, Tony, Liz, Cat and Marie who all donated items for the tombola.

We couldn't have done it without you.  
Pennie and Linda  
Curiosity Corner

### Miners tokens and badges wanted

I am a retired miner, I worked down Parkside Colliery, Merseyside for 21 years and my hobby is collecting colliery tokens sometimes called checks or tallies.

These are brass, sometimes alloy and were used as a safety/deployment check at the pit. The name of the colliery would be embossed on these items. I also collect mining badges and wondered if any of your readers could help me obtain any tokens or badges from the once prolific mining industry of Northumberland. I would also like to hear from anyone who worked or had connection with this industry. Any help would be much appreciated.

Terry Houghton  
pmhoughton@icloud.com  
69 Grange Valley,  
Haydock  
nr St. Helens  
Merseyside  
WA11 0TB



Peter Proctor Cannon sent us this photo from Horse Guards Parade on Remembrance Day, prior to him laying a wreath on the Cenotaph on behalf of the fallen of Amble and District.



# Shrub removals left residents and councillors stumped

Northumberland County Council has denied that the removal of mature shrubs in residential streets had been a cost cutting exercise.

They said that the work was carried out after complaints by local residents that children were being hurt by the thorns.

However they declined to say who had made the decision to remove the plants, after many residents, a local councillor and the Town Council claimed they were all unaware of the plans.

Residents of Ivy Street told The Ambler they were astonished to find council contractors removing large beds of shrubs from communal grassed areas outside their homes.

A mature Whitebeam tree was also earmarked for felling, but was saved after hurried phone calls to NCC and a local councillor.

Ivy Street resident Robin Lewsey told The Ambler he had known nothing about the decision and was dismayed to see the bushes being removed as he could not understand why.

He said "These were planted by the same County Council about 15 years ago. They were also a site for birds to nest in particularly the sparrow, a bird which is in serious decline mostly caused by 'lack of habitat'.

County Councillor Terry Clark, in whose ward the removals took place, said he had been unaware of the decision to take out the shrubs and tree, and said there had been poor communication from the council



to both himself and residents.

He told The Ambler, "Several residents contacted me concerned regarding the removal of bushes and a tree on the grassed area within Ivy Street. I do believe these were planted several years ago to stop children playing football in the residential area, stopping the ball from hitting windows and doors, or going onto the road putting children in danger."

The decision to remove the bushes and tree on Ivy Street was made after a walkabout by NCC, Amble Town Council and various other parties including police, and housing officers. However, Amble Town Council told The Ambler they too had been unaware of the decision. A spokesperson said, "Amble Town Council have not been involved

in the decision making regarding the removal of shrubs and bushes in Ivy Street, St Cuthbert's Avenue or Redesdale."

Cllr Clark said "I knew nothing about this until approached by residents wishing to keep the bushes, which came too late. There has been poor communication through the council involving myself and all the residents who live in the vicinity. I am glad we have managed to save the mature tree."

## Reply from NCC

The Ambler asked the County Council why the shrubs had not just been tidied or pruned instead, and if the removal of the plants, replaced by grass had been a cost cutting exercise. We asked who had made the decision and why there had been no communication about it with residents or partners.

A spokesperson told us: "The work was carried out following an estate walkabout with partners looking at improvements in the area.

"Representative from the Town and County Councils, Police and local residents joined the walkabout and three areas in Amble were highlighted following a number of complaints from residents about the shrub beds and concerns that children were being hurt from the thorns there.

"The decision was not taken lightly to remove the bushes. Feedback from the walkabout was taken into account, the shrubs weren't in great health and some were dead. A complaint that a child had been hurt also supported this decision to remove them."

We also asked how the removal of the shrubs fitted in with NCC's commitment to tackle biodiversity loss.

"This wasn't a cost cutting exercise but about responding to concerns raised locally. And while as a council we will try and avoid removing plants, a request has been made for the area to have new trees planted."

When told of the council's reasoning, Mr Lewsley told us:

"I think we have enough evidence to suggest that the NCC were very conscious of the cost and trouble of maintaining these shrubs and their promise of more tree planting seems remarkably inconsistent when you consider that when we first approached the contractors, they told us that their instructions were to remove all of the growth including the existing tree."

Anna Williams



Photos: Mature shrubs on Ivy Street were removed to the surprise of residents. The Whitebeam tree (top) was also destined to be felled

## Lionheart Cleaning

Commercial & Domestic Cleaning Services

### Your One Stop Cleaning Service Provider

Our ever expanding teams of fully trained and insured operatives are insured and able to carry out all of the following aspects of Domestic and Commercial cleaning for you, or your business.

Carpets and upholstery	Conservatory	Pressure washing
Windows	Roofs	End of Tenancy
Gutters/Fascias	Commercial	Post Build
	Kitchens	General

01665 713448 [www.lionheartcleaning.co.uk](http://www.lionheartcleaning.co.uk)



## St Mark's URC continues in the town

Rev'd Alison Mills here of St Mark's United Reformed Church - which is still here in Amble, despite the sale of the former church building, on the corner of Bede and Wellwood Streets.

For over eighteen months now, we have met for our 10am Sunday morning worship in the wonderful Drywater Arts Centre, in 'Fenders Yard', continuing and growing in faithful fellowship, worshipping and serving as the URC in Amble. Everyone is very welcome to visit us at any of our services - we'd love to see you.

So, when you are next asked, 'Where is St Mark's church?' you know where we are, and it will be great to meet you at Dry Water, one Sunday morning.

Many of St Mark's members continue to volunteer in community groups and activities in Amble too; for example the Puffin Lounge, which had first met in the church buildings pre-Covid.

This is a fortnightly friendship and support group which also engages with those living with dementia, and their carers.

'Puffins' now meets on alternating Thursdays, from 2pm to 4pm, in the inviting lounge at Dolphin Court, Hauxley Way. More details of both Puffin Lounge and St Mark's 'Sundays-at-Dry Water' can be obtained by phoning St Mark's Church Secretary, Mrs Susan Swanston on 01665 711 177

Just a question - Have you bought your Christmas cards yet?!!

For over 20 years members of St Mark's URC and other FAIR-minded folk have been buying fairly traded Christmas cards, gifts and foodstuffs made possible by using the Traidcraft catalogue. This was supplied and organised by one of our church members, Mr FAIR-trade himself, George Hall, of Straffen Court.

In early 2023, the news emerged that the Traidcraft business had been stripped down to parts and sold to the highest bidder.

Happily, a successor was formed - under the care of "Transform Trade". This

umbrella organisation also seeks to be an inspirational force for good in international trade and development. Its plans do not include launching a new Traidcraft shop, but "Transform Trade" promises to pioneer new fairly traded products while continuing the promotion of fairness in trading and supply chains, worldwide.

Restoring the supply of a small range of the best loved Traidcraft products - including the classic Traidcraft tea blends and Christmas cards is one of the new organisations' expressed aims - we will keep you updated.

'Happy CHRISTMAS' from St Mark's-URC-at-Drywater.

*Rev Alison Mills*

## WHAT YOU SAY...

>> more letters on p6

### Speed limit is too fast

The speed limit along Acklington Rd and in front of the schools in this area is too fast. I see cars regularly racing into Amble along this road when I am out walking my dog.

My concerns are for the children when coming and leaving school. I see that they have a lollipop lady in this area

but the cars and lorries are still approaching too fast.

Would it not be possible for the Council to install such measures as they have done along the Links Rd to slow up the traffic flow?

*D Wade  
via email*

### Meta 4 dance need board members

We are seeking new members to join our board of directors.

We at Meta4 Dance are a Northumberland-based dance company (near Alnwick). We provide community classes and school workshops designed to combat rural isolation and support individuals with special educational needs.

We also craft captivating professional performances across

the region.

We are looking to fill the roles of chairperson, secretary and treasurer.

If you have the experience needed to strengthen our board of directors and would like to help play a part in making dance accessible for all, then please get in touch.

Email: [hello@meta4dance.com](mailto:hello@meta4dance.com) or call Lily Horgan on 07936937986

### Disappointed with Harbour Commissioners



Broomhill St back lane in Summer



The same view now

It is very disappointing to see that Warkworth Harbour Commission (WHC) still continues to neglect the land at the back of Broomhill Street and indeed actively work against its colonisation by nature.

Anyone walking this way earlier in the year will have seen it alive with native flowers, insects, butterflies and birds (see photo above). In September WHC chose to cut down the plants and spray weedkiller. They left all the rubbish and debris and put up ugly "No Dogs" signs giving the area the appearance of a scrap yard.

Despite their supposed

"eco-friendly offices" WHC continue to give the impression of not caring at all about climate change or being part of the community.

They have ignored several letters and emails on this subject over the last few years. It is bad business and bad manners not to acknowledge correspondence particularly when it comes from local residents.

As a community we all need to make a contribution to preserving and protecting our environment for the future.

*Broomhill Street resident  
via email*



**Northern Zen Dogs**  
Canine Therapy

The solution to behaviours rooted in **anxiety or overstimulation**. Learn optimism and confidence boosting games, dog relaxation techniques, massage and distraction from arousal therapy.

facebook.com/NorthernZenDogs  
[alison@thought-org.co.uk](mailto:alison@thought-org.co.uk)

07949 026 374 ... Call for a **FREE** 10 min consultation!



**edie pebble**

Pod 14 Amble Harbour Village



Beautiful handmade gifts, vintage treasures and nautical decorations



## Lara raises £300 for Heart Unit

Four year old Lara Yearnshire from Amble has raised £300 for the Childrens Heart Unit at the Freeman Hospital.

Lara's Mum, Nadia explains, "A week after Lara was born, we noticed her to be panting as well having to work hard to breath. I remember mentioning that I could see her chest sucking in a lot to the midwife when she visited.



Bea and Lara

As a result, we were sent to the NESCH at Cramlington where she was found to have a heart murmur. Lara was diagnosed with two small holes in her heart and a duct that was causing extra blood to flow to the left side and stretching the pumping chamber.

"At 19 months Lara had surgery to close this in order to preserve left ventricle function and the risk of endocarditis (a potentially fatal infection of the inner lining of the

heart.) I will be forever grateful to the Freeman Hospital for saving Lara's life."

During this time Nadia had been following two special little girls on social media, Beatrix Archbold, age two, whose life was saved by a donor, and Evie, aged four, who is urgently waiting for a heart transplant. She read how low Christmas was on the ward last year and how so many days were lonely. There were beautiful posts about Amble Boat Trips and on Little Shore and realised how much Bea loved Amble, so Nadia and Lara decided to give something back.

They set up a "Gofundme" page <https://gofund.me/3d2a71b4> with the intention of raising £100 by swimming 100m but very soon Lara exceeded her target.

Nadia said "We were overwhelmed by the support Lara has received from Friends and family and hope the £305 will help parents buy the children on the Heart Unit Christmas toys, treats or whatever they want to help make their days a little brighter. Lara is an inspirational little girl and I am so proud of her."

For more information on Bea and Evie and Organ donation visit: Beatrix's Heart Journey and Evie's Heart Journey on Facebook, Instagram and twitter.

## Lily Tibbitts' Student Life

Recently, I was running a writing workshop for kids all about climate change and the local area, talking about how our wild spaces are changing as the planet does. The whole time I was thinking about my own natural spaces - the places in Amble that I don't get to see as much, being away at university.

There are natural places in Newcastle, of course, but nature that you've grown up with is the closest to your heart. When I come back, it is always odd to see how things have changed. Bits of fields become housing estates, bits of woodland disappear.

My dad, another lover of local wildlife, was the one who showed me Tom Lloyd's article 'Save the A1068 Woods' from the last edition of the Ambler, all about the little patch of woodland near the A1068 roundabout which Persimmon has permission to demolish in order to build a junction into their new estate. My dad and I went down to the woodland to check it out.

As we got close, we saw two

deer skipping out from the trees and into the fields, and inside the woodland were clear

signs that the deer are living there - little patches of ground scraped clear to sleep on. There are trees like willow, sycamore, hawthorn, elder, alder, scots pine, cypress, ash and birch, as well as mosses, lichens and plants such as cow parsnip, rose, weigela and gorse. We identified inkcap, candlesnuff and tawny funnel cap mushrooms as well as a poisonous variety very aptly called the sickener. These were only the things we could identify - there was much more.

These little patches of woodland might not look like much, just a random copse of trees on the side of the road, but they are all important parts of Amble's wildlife, full of countless species. When I think of Amble, this is what I think of: the natural spaces we should be working to save.



# CBSWorld

Complete Business Supplies



## Printing Services

Leaflets • Booklets • Books • Newsletters • Posters  
Carbonless sets and books • Fine art prints • Invites  
PVC Banners • Foamex boards • Signage

[www.cbsworld.co.uk](http://www.cbsworld.co.uk)

Unit 5 Elm Square, Lionheart Enterprise Park  
Alnwick, Northumberland NE66 2ES  
Tel: 01665 660022 Email: [sales@cbsworld.co.uk](mailto:sales@cbsworld.co.uk)



Blood Pressure Checks
 Vaccinations
 Allergy Treatments
 Hair Loss Treatments

Erectile Dysfunction Treatments
 Period Delay
 Travel Vaccinations
 Weight Management

Migraine Treatments
 Contraception
 Smoking Cessation
 Podiatrist

and treatments not routinely offered by the NHS  
To discuss any of our services in private, speak to a pharmacist

Visit our website for more information:  
[www.cromiepharmacy.co.uk](http://www.cromiepharmacy.co.uk)  
[info@cromiepharmacy.co.uk](mailto:info@cromiepharmacy.co.uk) | 01665 710 896  
158 Percy St, Amble, Morpeth, NE65 0AG



## Fond send off for St Cuthbert's vicar



It was with great sadness that St Cuthbert's Parish Council and congregation learned that the Revd. John McDermott had reached retiring age, meaning his last service was on Sunday 12 November.

John was vicar of St Cuthbert's for over six years during which time he was the backbone of the parish, working hard to serve its needs spiritually, practically and socially. He used his gifts of positivity, encouragement and consultation to build up St Cuthbert's in unity and faith. During his tenure, we saw the links between the parish and local schools strengthened with strong links within the community.

We could not let John and

his wife, Jaki, leave without a party to show our appreciation, so on Friday 10 November the Parish Hall was the venue for a very happy, albeit tinged with sadness, send off. Church members decorated the hall with lights, bunting and balloons and donations of food were generous and plentiful. Paul Rigby and Ashley Sim ran a bar and the Mothers' Union provided teas and coffees.

Amble Sword Dancers gave a display of traditional long sword dancing, accompanied by Beverley Palin and friends who played folk songs on guitar, violin and flute. Bartle Rippon kept the music going by organising the disco.

Following speeches of

appreciation from Mack Hetherington and Margaret Riches, John was presented with a pair of binoculars and a cheque. Jaki received a box of chocolates. The Mothers' Union presented a rose bush for their new home in Hauxley.

Both John and Jaki expressed their thanks for the welcome and support they received throughout their time in Amble. Party guests expressed their appreciation, commenting that John had always taken the time to get to know the people of Amble individually.

There is no doubt that John will be missed at St Cuthbert's.

Wendy André  
Churchwarden

## Avian Flu hits rare birds on Coquet Island for a second year

Regular walkers on our beaches will be in no doubt that Avian Flu once again devastated our shorebirds. Some of these birds are already suffering from species decline, and conservationists are becoming increasingly worried for the future of our wildlife. We asked Stephen Westerberg, RSPB senior site manager for Coquet Island for an update on the situation on the island.

*How badly has Coquet Island fared this year with Avian Flu?*

Several species were affected with Avian Flu this year, some more than others, however, all species fledged young. The Black-headed Gulls fared worse with only a handful of chicks fledging from the 5500 pairs nesting and dead Roseate Terns were tested for Avian Flu and were positive.

*What are the latest numbers for the species affected?*

Last year there were 154 Roseate Tern nests, 1.68 eggs per nest and productivity of 0.48. The Roseate figures for this year are 118 nests, 1.45 eggs per nest and a maximum productivity of 0.5. This last figure however should be treated with caution, as we could not search the shoreline for corpses during the breeding season due to HPAI (Highly Pathogenic Avian Influenza). If we had done that then we may have found chicks that had wandered down to the shoreline and died, reducing the productivity figure.

*I gather you're not on the island much; that must be very difficult in terms of monitoring/protecting etc?*

We visited the island about once a week this year, balancing the need to keep staff safe and continue our vital conservation work. On our visits we concentrated on monitoring the Roseate Terns as they are our most important species, Coquet Island being the only site in the country where they nest. With our online cameras, we were also able to monitor the island 24 hours a day.

*What will happen in terms of getting the island ready for next year or are you having to leave everything to go wild?*

We are testing the island for the presence of HPAI, and it is not currently known how

long the virus will survive in the various environments.

Testing will give us vital information on what level of protective equipment (PPE) we need. Whatever the results, staff, wearing the correct PPE will carry out the usual habitat management and conservation work on the island to ensure it is ready for the breeding seabirds arriving next year.

We urgently need targeted species conservation actions to build resilience in the most vulnerable populations.

The virus is unpredictable, and we need long-term monitoring, research and response plans to tackle its impact.

Whilst the risk to human health is low, and Coquet Island is not open to the public, we



A Roseate Tern and chick filmed on the nest camera on Coquet Island

### Some context on Avian Flu from the RSPB

Avian Influenza is devastating UK and global wild bird populations, exacerbating ongoing nature declines across the world. Wild birds are victims and not just vectors of this disease. This is yet another human-made problem with the current highly pathogenic strain having originated in intensive poultry operations in Asia.

advise people not to touch any visibly sick or dead birds and encourage everyone to continue reporting dead wild birds to Defra for testing (Report dead wild birds - GOV.UK ([www.gov.uk](http://www.gov.uk))).

If you know the species, please also report dead wild birds on BirdTrack to help assess population impacts (BirdTrack | BTO - British Trust for Ornithology).

### THE MAD JAM WOMAN & Pride of Northumbria



**Award  
winning  
Preserves  
& Relishes**

Fourways One  
Bridge St, Amble NE65 0DR  
07766 857680

Also available at the Seafood Centre  
[www.madjamwoman.com](http://www.madjamwoman.com)



## Maisie's hair raising £1000 donation

Amble youngster, Maisie Edwards, aged six, has donated 12" of her long locks to The Little Princess Trust, who make and donate real hair wigs for children who have sadly lost their own hair due to cancer treatment or other conditions such as alopecia.

Maisie's Mother, Lindsey explained: "I heard about this fantastic charity through a friend who donated her hair following the tragic passing of her Dad to cancer; I was inspired by her bravery and I told Maisie about it. Sometime later, when Maisie was due for a hair trim she asked if she could have her hair cut short and donate it to help the poorly children we had talked about. I was so proud of her kindness."

"When I researched The Little Princess Trust I learned that it costs in the region of £700 to provide a child with a wig, so I decided to set up a Just Giving page to see if we could raise some sponsorship to support the charity. I'm overwhelmed with the kindness of friends and family, raising over £1,000 in just a few days."



Lindsey continued: "Maisie is quite shy when it comes to public speaking and doesn't like being made a fuss of, but she was very brave and stood up in school assembly to tell her peers all about her fundraising and haircut. I have had several children and parents from Maisie's school say to me since that Maisie's kindness has inspired them to do the same, which is fantastic to hear. Maisie's younger sister, who is three, has also offered to donate her hair....when she's six!"

For Maisie's fundraising page visit [justgiving.com](http://justgiving.com) and search for Lindsey Edwards.

## Cross Street now one way for vehicles

Drivers, cyclists and pedestrians will need to take care now that a new road layout has appeared in Amble town centre.

The new system which appeared suddenly in November, means Cross Street is now only one way for motor vehicles. Drivers can no longer turn into Cross Street from Church Street.

Drivers on Queen Street or North Street can still use Cross Street. However, cyclists may still use the road in either direction.



Above: New signage on Church Street announcing the one way system for motor vehicles.

## Expertise Wills and Wealth

### PROTECT YOUR FAMILY ASSETS

Long Term Care • Third Party Challenges • Divorce  
Business Failure • Sideways Disinheritance

**LASTING POWER OF ATTORNEY** in areas of  
Property and Affairs • Health and Welfare  
Make sure you have them in place while you're fit and healthy

**WILLS** Simple Wills • Trust Wills • Free Reviews

**PROBATE** Call us for Expert Help and Advice

**PENSIONS** Do you have pension pots scattered  
here and there? Now coming up to retirement?  
We're here to help you go through your options.

**Ring Enid: 07772 182 130**  
for a **FREE CONSULTATION** in your home



Email: [enid.eww@sky.com](mailto:enid.eww@sky.com)  
Enid Wilson  
Consultant  
30 years of experience



## LOCAL CHARTERED ACCOUNTANT

- ✓ Self Assessment
- ✓ VAT Returns
- ✓ Corporation Tax
- ✓ Payroll & CIS
- ✓ Annual Accounts
- ✓ Tax Planning

**CONTACT MATTHEW SPEARS  
TO ARRANGE YOUR  
FREE CONSULTATION**

☎ 01670 282 345  
☎ 07596 926 740  
✉ [hello@tidycloud.co.uk](mailto:hello@tidycloud.co.uk)  
💻 [www.tidycloud.co.uk](http://www.tidycloud.co.uk)







## COME AND JOIN ARTOGRAFFI

At Artograffi, we write articles, draw, research, interview and most of all we're creative. Young people over the age of nine can join in at the Fourways 2 building on Monday from 4:30pm to 6:00pm.



Artograffi has always been in the middle of The Ambler "We say the middle bit is the best!" said Anna, who started Artograffi in early 2000.

Artograffi gives young people a chance to have their say and to write about all the things that interest them.

If you are interested in joining we'd be happy to see you.  
By Issy and Eden

## The Sycamore Gap Tree: The story so far

The Sycamore Gap tree (dubbed the most photographed tree in the UK) was felled with a chainsaw on 28 September of this year. It was

originally made popular because of the film Robin Hood: Prince of Thieves, for the picturesque views it gave. Experts say the tree was around 300 years old making it very sad for some people that it was abruptly chopped.

At the time of writing, a teenager, a 60 year old man and two 30 year olds have all

been arrested and all been released on bail.

Why was the tree felled? Eden says, "They probably chopped it for the fame and coolness."

Anna adds, "As a tree lover I find it really hard to think why on earth anyone would do that."

To forever memorialise the tree, I think a memorial should be made on the spot of the tree to give people something to visit and something to remember.  
By Noah



## HAPPY CHRISTMAS FROM ARTOGRAFFI!

We hope everyone in Amble enjoyed the lights and the parade! The lights were amazing to us at Artograffi, we hope you enjoyed it too. We hope you have a Merry Christmas and New Year, and that everyone gets loads of presents from Santa!  
From Eden, Issy, Noah, Nina, Grace and Ava

## New Year's Resolution



Everyone needs to stop fighting because is not good. I think that the world needs a New Year Resolution. To stop fighting!

We have been looking at pictures of wars in Ukraine and Gaza and it is too much. People are dying during the wars and lots of children, babies and parents are dying every day. It is not fair at all. Plus, it is not cool to fight.

So, let's stop fighting. As parents tell children to stop bickering, then maybe we all should stop as well.  
By Nina



## Is overpopulation harming us all?

Overpopulation is when there are too many people on Earth for the planet to sustain us.

Overpopulation leads to problems with the environment, food/water scarcity and more.

As of 9 October 2023, the world population is estimated to be around 8,045,311,447, (over eight billion) with the most populated country in the world being India, which has 1,425,775,850 (nearly one and a half billion) people. There isn't only one reason why the population is this large, but improved medical care is a big reason. Another reason why the population could be big is because of abortion being banned or people being encouraged to have large families.

With a large population there comes a need for a lot of housing, along with other things like farms to produce food for the people. However, when spaces are cleared for housing and agriculture, the environment will suffer due to the removal of plants, especially trees to make way for the buildings. This would lead to higher levels of carbon dioxide and other greenhouse gases in the air, which leads to higher temperatures.

More people also make more demand for healthcare, and most importantly food and water. 71% of the Earth's surface is water, but only 2.5% of that water is actually drinkable. This means that we have a finite source of drinkable water, and the more people there are, the quicker that 2.5% of freshwater will be gone. Although you can use desalination to

remove impurities from saltwater, it takes a lot of money and energy to do. Along with this, a lot of water is wasted in daily life.

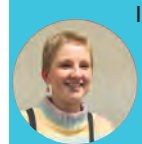
Climate change means some places will become impossible to live in, like the Maldives, which are likely to be engulfed by water, so entire populations will have to move. Pressure on resources, housing and food will increase, which leads to poorer living conditions for people.

Do we actually HAVE overpopulation though? Yes, the Earth is overpopulated. However, if more people are educated about things like reproductive health they will be able to stop unwanted pregnancies, for example.

By Grace



## TYCOON ENTREPRENEURS- WHERE ARE THEY NOW?



In issue #141 of Artograffi I wrote about the group of JCSC students undertaking the huge project of creating their own business.

They were Light Clouds and Co, a terrarium selling group who successfully used their loan to create profit. Since then, they have come second in the Tycoon competition, visited London and started a whole new entrepreneurial idea.

Since we last spoke, the group told me they have visited Hampton Court Palace in London. There they received second place in the key stage 3/4 category of the Tycoon entrepreneur competition, and Emma said she believed they achieved this because of the uniqueness of their idea, and the extensive problem solving they did whilst running the business. Their day trip to London (starting at 4 and getting back at nearly midnight!) was filled with excitement,

and the group animatedly shared their experience on the London Underground and meeting professionals from businesses such as FIFA and Sky who were present at the event.

The group have learned many skills from their time in business, for example time management and job delegation. Mr O'Neill, the teacher who helps bring their visions to life, added that there were a lot of deadlines, evaluations and communication that had to happen. However he seemed proud of how everyone had handled these challenges.

As a result they are starting a whole new business! Light Clouds and Co has become



*l-r: Bethany, Olivia, Minnie, Emma, Becky and Jess with Peter Jones*

ProCRAFTination- a budding business selling handmade and personalised bracelets, necklaces and pins. They'll be featuring at Amble market (hopefully starting on 26 November, but weather dependent); this time they also have an online shop. Look them up on social media under ProCRAFTination to get your beautiful yet inexpensive jewellery.

By Ava

## SHOUTOUT FOR GIRLS FOOTBALL



We need more girls to play football because there is only one football team in Amble for girls my age, 10 to 11. Also boys are not always the nicest about girls playing on their team.

I play for a football team called the Saxons. I play at The Welfare but now since it's the winter we play at Alnwick on 3D pitches.

If you are interested in joining you can



text Craig Robertson and he will give more details to join. His number is 07900570799.

I like playing football because my family are very big Newcastle fans and so am I. Also, I played since I was little and was scared to join a team with boys. Now at 10 years old I have faced my fear and joined, so you can too!

I want girls to know that you should not be scared to play football, you are powerful and don't be scared of silly boys!

By Eden



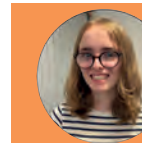
## AI: IS IT A GOOD OR BAD THING?

Artificial intelligence (AI) is becoming more and more powerful and easier for the public to use. When you load up the internet, you can type ChatGPT into your search bar, make an account and then you have free reign over a robot. Is this dangerous or is it a good thing?

A new AI called Google Duplex can wait on hold for you, make reservations and even book a haircut for you. And, it actually sounds like a real person. I used Anna as my lab rat and she was blown away with how realistic the voices were. This could be very good to help people firstly not forget their reservations or appointments and secondly, do stuff in the background while they do something more important. A negative impact of this is it takes away the need for people to talk to each other, which a lot of people don't do anymore.

AI can also create something called a deepfake. A deepfake is a fake video picture or audio of a person. Famous or not, deepfake websites can almost perfectly replicate people. Again, it looks real, sounds real and acts real. This can really only be depicted as bad, as it can put words into someone's mouth without them knowing. This definitely dangerous as it could cause damage to people's public opinions.

I think it can certainly be used as a good thing in ordering things for you and helping you remember things but I think the bad outweighs the good with AI. It can make people look bad and make people more alone. With sites like ChatGPT, they can also fake you writing essays and work assignments. I might not even have written this. It could have been an AI!  
By Noah ?



## Does too much bad news make us stop listening?

Whether you get your news from TV, the newspaper or social media, it is obvious that there are more stories about bad things showing up.

I think that too much bad news could have two opposite effects - either we stop reading or watching the news, or the other option, we end up seeing even more bad news on things like social media. Take Tiktok for example, if you see one video about bad news and watch it to the end, the algorithm will push out more bad news videos to you, therefore making you see even more bad news.

On other things like the TV and newspaper where there isn't an algorithm, bad news is still shown - sometimes even more than good news - because bad news headlines are more likely to catch your eye and interest you.

So this might make you stop reading about bad news because, as Noah says, "If you read about the same thing over and over, it becomes boring and repetitive."

This could explain why the Ukraine War, although still in progress, is not talked about as much in the news compared to when it was first started. Of course not every story about Ukraine is about the same thing.

I think people have short attention spans so they respond to newer, different news which people are more interested in.

This gives another explanation as to why news stories on older subjects are shown less prominently, because people lose interest in them quickly.

By Grace





# Reports from our *County Councillors*



I am pleased to report the following funded schemes through my small schemes budget:-

- Interactive speed sign at High Hauxley £6630.
- Signage along Link's Road to deter overnight camper vans parking in the laybys next to dunes leaving rubbish behind and having illegal fires, several signs have been erected at the cost £2000.
- Footpath upgrading along Southmead, leading to the Enterprise Park, new tarmac surface which was very much needed, we have also needed to upgrade the drainage system which is essential for safe removal of excess water from

Terry.Clark@northumberland.gov.uk 07779 983768

heavy rainfall especially this time of year.

Many thanks to all who continue and report issues on FixMyStreet, hundreds of residents reporting concerns within Amble and surrounding area.

As we move into the Advent Season and prepare for the celebrations of Christmas, we know this time of year brings particular challenges for families trying to cope with the cost of living and rising fuel bills.

If you need extra support please contact Northumberland Communities Together, a response hub that can give much needed information & advice. Email - NCT@northumberland.gov.uk Phone - 01670 620015.

It was wonderful to see the large turnout of people at the Remembrance Parade on 12 November in the Town Square. As the Armed Forces Champion for Northumberland, I would like to thank the Town Council for organising it and taking such good care of the War Memorials to those local residents who paid the ultimate price for service to their country

There has been an issue with streetlights on Acklington Road and I am still trying to get it sorted, I have had one fixed, but the three others are still off. It appears to be an issue about who is responsible for them, but I will continue to demand action and hopefully get them on again soon.

You may have noticed a new sign at the Braid entrance, I don't think it does the job that it was intended to do, and

therefore I have requested a sign on the main road (on the left as you leave Amble) that visitors can see.

The plans for the new school development have been passed, however I still think one or two details need to be finalised and I am working with NCC's schools' designers to clarify them and make sure that the Acklington Road parking of visitors to the welfare grounds are considered.

In these dark nights it is sometimes difficult to see children especially if they are on bikes or scooters, I ask parents to try to get some sort of reflective clothing for their children to help keep them safe if they are out in the dark.

I take this opportunity to wish you all well at Christmas.

jeffrey.watson@northumberland.gov.uk 07802385367



*"Hauxley Parish Council would like to wish all village residents a Merry Christmas and a Happy New Year"*

## Replica of St Cuthberts returns to church



Above: Rev John Mc Dermott, Audrey Jones and the shell church model

A model replica of St Cuthbert's Church made out of shells can once again be seen in the main church after being kept in the church hall for several years.

The model was made to commemorate the 100th anniversary of the church in 1970, by long term parishioners Lily and Ernie Simonsen. They painstakingly collected

all the many and diverse types of shells from local beaches. Several different shells were used including the more common limpet, cockle, mussel, whelk, cowries, through to the slightly more exotic Baltic tellin shells.

Audrey Jones, daughter of Lily and Ernie said, "I am delighted to see it back in the main church, and I thank John for having it back."

**A huge thank you to everyone who has supported over the past year.**

**Together we have made a real difference within the community and within peoples lives.**



**Merry Christmas  
and a  
Happy New Year**



**Best Wishes**



*Scott Dickinson*

**MBE**

**Member for Druridge Bay &  
Northumberland Labour Group  
Leader**

**NORTHUMBERLAND  
Labour**







Hello everyone, welcome to the last Ambler of 2023. And once again we ask where has the year gone!

We've weathered storms of purported biblical levels. Now as winter approaches we face the prospects of a Covid resurgence, but we have managed to survive this all before and I'm sure we will emerge in the New Year looking forward to happier times.

Having said that I would like to share some sad news with you all. I'm sure you will remember Florence Angus, who not only ran her business on Queen Street but was also integral to Amble having Christmas lights.

Florence was chairperson of the Lights Committee for many years and encouraged businesses and volunteers to work together to make the street a brighter place in the run up to Christmas. The tradition a group of hardy volunteers still carry out for the town today. Last month we received the sad news of Florence's death. This was

particularly upsetting for Trust staff who worked with Florence when she served as a trustee on our committees giving up much of her valuable time.

### Vandalism

I would like to bring attention to the damage caused to one of the bird heads in the town square. Three young ladies were seen causing the damage. When asked to stop they gave the gentleman a mouthful of foul language. What utterly charming young ladies you must be to think your actions were warranted and clever. However we do have an idea of who you are, so when you are next wandering around with Morrisons trolleys looking for somewhere stupid to leave them – know we will be sending you the invoice for the repairs and you won't like it!

### Playzone work

We are still waiting for dates for the play zone work to commence, which is taking

longer than expected, but as the planning application is for multiple sites, this is understandable. We were disappointed that tennis was not to be included on the site layout, but have been told that it is not a funded sport through the football foundation. We are not sure why this wasn't mentioned when carrying out the consultation and it seems a little odd that after asking the community what they would like, the second highest scoring sport is then not deemed to be fundable!

However, on a more positive note work to replace the flooring on the children's play area flooring is currently underway. Weather permitting it should be complete within a couple of weeks.

### Neighbourhood Plan

We had what ended up being a positive meeting with Amble Town Council and Northumberland County Council. While this is still very

early stages, all parties can see a benefit in creating a plan for the town. If the town council decide to proceed, I'm sure they will make an announcement in the future.

While planning appears to be progressing for the new JCSC build, we have asked for more information relating to the use of the Welfare for passage. However it seems that detailed design plans won't be emerging until NCC have their preferred developer. I hope that we will meet up in January to discuss what those plans entail.

Finally, we have just been notified of the £2749.23 that has been raised through the Co-op Community Fund for the Lobster Hatchery. We would like to express our thanks to you all for your support.

All that remains now is to wish you all a very merry Christmas and prosperous New Year.

*Julia, all Trust staff and Trustees*  
julia@ambledevelopmenttrust.org.uk



## Funeralcare

Our caring staff are here to listen and advise you, 24 hours a day, 7 days a week



Coquetdale Cottage, Queen Street, Amble  
Tel: 01665 710437



**Joseph A Donkin**  
Financial Management

Investment Planning

Retirement Planning

Life, Illness & Family Protection

Business Protection

Tax & Estate Planning

Get in touch if you would like to know more:

Email: joseph.donkin@sjpp.co.uk

Phone: 07469396964

Members of the St. James's Place Partnership in the UK represent St. James's Place Wealth Management plc, which is authorised and regulated by the Financial Conduct Authority. St. James's Place Wealth Management plc is a registered office: St. James's Place House, 1, Telford Road, Cirencester, Gloucestershire, GL7 1FP, United Kingdom. Registered in England Number 4113955.





# Amble Town



# COUNCIL

Town: 14th Dec; 11th Jan 2024 at 6p.m. Council Office  
Amenities: 25th Jan 2024 at 6p.m. Council Office  
D-Day Commemoration Event: Saturday 8th June 2024

EAST WARD:	Helen Lewis, Ian Parks, 33 Warkworth Avenue, Warkworth. NE65 0TP	Craig Weir (Chair/Mayor) 76 Priory Park, Amble NE65 0HY 01665 712342	WEST WARD:	Don Carmichael doncarmichael. amble@gmail.com	David Bewley 11 Brinkburn Place Amble NE65 0BJ 07525713086	CEN. WARD:	Kate Morrison, 3 Island View, Amble NE65 0SE 01665 711191	Paul Dancer Wellbank Victoria Villas Amble NE65 0LQ pauldancer1998@ btinternet.com
------------	---	---	------------	--	---	------------	---	--

Season's Greetings from the Council- Enjoy the festive break

## COMMUNITY HUB

Over the last 4 months, Council have visited a number of community hubs to help determine what works best and what they would do differently. The journey to get a Hub for Amble began in earnest with an Expression of Interest in acquiring Amble First School if NCC do not have a plan for after the pupils leave. NCC's agreement may be to retain ownership but allow the building to be used for this purpose or they may determine a community asset transfer would be best. We await their decision. If favourable, then with other interested community groups a Business Plan needs to be prepared and grant applications looked at for the necessary refurbishment work. There's a long, long way to go yet.

## COMMUNITY WEBSITE

Students from JCSC are currently working hard to create a website which will have information on all kinds of activities going on in the town. Whether you have lived here a while, are new to the area or are just visiting, you will soon be able to see what is happening. It will have details of things for all age groups from babies to the elderly; whether sporty, leisurely or social, they'll all be there. Of course, that is the ambition...but it will only work if your group/organisation gives the details to Council. Established and new groups, regular meetings or 'one off' events- all are wanted. It is hoped to go 'live' by Easter but we need the details and contact information now so the preparation work can be done. All too often 'there's nothing to do' can be heard- it's simply not true as there are many, many things going on in the town....but people need to know more about the variety available from both professionals and volunteers who work so hard.

## VACANCIES

In recent months we have seen two resignations, Jeff Watson and Jackie Turpin, both of whom have enjoyed their time working as part of the team but now wish to devote more time to other personal commitments. Meanwhile we thank them for their service and wish them well for the future. We are delighted to have co-opted and to now welcome two new faces, Chris Palmer and Don Carmichael, for our West Ward. We hope they will quickly settle in and look forward to hearing their thoughts about the town.

## D-DAY 80th COMMEMORATION

Plans have begun for this memorable occasion. Saturday 8th June 2024, starts with a tour of the WWII memorials at the West Cemetery at 10a.m. Then a 'Picnic in the Square' from Midday when you are invited to bring your own seating and refreshments or buy the latter from vendors with stalls there. At Midday there will be a short Commemoration Service with Wreath laying in memory of all those who gave their lives. This will then lead us from commemoration to the celebrations which happened when the war ended, in the main due to the magnificent efforts of all the forces on D-DAY 6th June 1944. There will be music and singing from Harbour Lights and Alnwick All Stars. So.....save the date in your diary now.

## SOCIAL MEDIA

Some queries to our staff come in the form of complaints after someone has looked at various social media outlets or the press. It's astonishing how people can be so aggressive in their certain belief of the 'truth' they have read. A recent case was the removal of shrubs in some areas of the town. Council were not involved in this, knew nothing about it and certainly had not been part of any 'estate' walkabout where this was discussed. Yet the press, NCC and Social Media all said we were! In some cases reports may well be true but, without checking, there was an immediate reaction and blame. The voice of reason, which should say check the facts or question what you have read, seems to disappear in the urge to respond quickly. The same can be said of some people about something they see: comment on social media first on what you think is the case, often blaming someone or some organisation, but don't bother to ask anyone who may actually be in a position to know what is happening! It may turn out that your 'knee jerk' reaction is correct. But what if it isn't? How many people will be hurt or annoyed? Will what you say inflame the situation or lead to unnecessary aggression? Will it make matters worse or even blur the truth? Please take a moment to think before acting, consider others and even, in some cases, offer help if you can.

## NEIGHBOURHOOD DEVELOPMENT PLAN

Council are applying to NCC to carry out a limited neighbourhood development plan which will focus on the important aspects of conservation of the open spaces and heritage within the parish boundary. If accepted by NCC, grants can be applied for to reduce the impact on the precept. Once that is achieved, a few willing volunteers from the community will be needed to form a steering group to progress the necessary information to complete the draft. YOU will all then have a vital role in this as the community needs to let the steering group know what open space and heritage in the parish they would like to pinpoint in the plan. So look out for further information and please start to gather your thoughts to respond to any discussion/questionnaire which will come about.

## COUNCILLORS' CORNER

Where has the time gone? It was 14 years ago that I arrived in Amble and joined the Council. At that time I was told Amble was a fragmented town with a failing industry. Coal and fishing were just about finished and the main factory site at the frozen food factory was shutting down.

I am so pleased that here we are in a town that has revitalised itself. We have a thriving tourist trade, gourmet style restaurants and many cafes to help cater for this increase in trade. A town which is much talked about and sought after for a visit in all seasons. An example to other coastal towns on what can be achieved if the will is there. The community should be proud of our achievements and the many volunteers who worked so hard to make this possible.

Well done to them! Merry Xmas for 2023

Cllr Craig Weir

TOWN COUNCIL OFFICES, FOURWAYS 2, AMBLE. NE65 0DT Tel: 01665 714 695 [www.amble.gov.uk](http://www.amble.gov.uk)

Email [ask@amble.gov.uk](mailto:ask@amble.gov.uk) Twitter: @AmbleTC Facebook: [www.facebook.com/AmbleTownCouncil](http://www.facebook.com/AmbleTownCouncil)

Office hours: 10.30am-12noon & 1.30-3p.m. Monday to Friday Vicki Smith, Town Clerk Minutes available to view in Office or online



# Cash boost to help local teens become world and work ready

Northumberland Wildlife Trust has announced the launch of a new community experience programme that will support young people across the region.

The grant is part of a significant £20m funding package from the National Citizen Service Trust, for the delivery of community-based experiences at a local and grassroots level.



The grant will allow Northumberland Wildlife Trust to deliver Eco Influencers, a youth-led project supporting up to 80 young people, aged 16-17, in schools, youth or community groups as they design and deliver environmental

projects to benefit their local communities.

These new experiences provide opportunities for teenagers to engage in local activities that foster skills development, deepen their understanding of the community, and empower them to contribute positively to its improvement.

The grants support organisations that cater to specific groups of young people who may not have participated in previous NCS initiatives.

Projects could range from creating wildlife spaces and monitoring wildlife to hosting clothes swapping events - all with the aim of helping young people improve their wellbeing and connection to nature, whilst building skills and friendships along the way.

Any schools, youth or community groups interested in joining Eco Influencers should visit [www.nwt.org.uk/what-we-do/projects/eco-influencers-scheme](http://www.nwt.org.uk/what-we-do/projects/eco-influencers-scheme) for more information or contact Liz Heard, at [liz.heard@northwt.org.uk](mailto:liz.heard@northwt.org.uk)

## New Parish Priest for the Sacred Heart



in Alnwick.

Born in Sunderland in 1964; one of eight boys Canon Stephen had a career as an ophthalmic nurse and worked abroad as a travel guide. He went on to train as a mental health nurse before commencing his studies for the priesthood at Usher College, Durham.

He was ordained on June 20 in 2000 and has worked in a number of parishes, including Sunderland, Ashington and Alnwick.

Canon Stephen is very much looking forward to getting to know the people of the 'Friendliest Port' and working with the clergy of the other churches in Amble.

We extend a warm welcome to Canon Stephen.

*Sacred Heart and St. Cuthbert's RC Church*

The Roman Catholic Bishop of Hexham and Newcastle, The Right Reverend Stephen Wright has appointed Canon Stephen Watson to be the new Parish Priest of the Sacred Heart and St. Cuthbert's in succession to the late Father Malcolm Cairns.

This appointment will be in addition to his current priestly responsibilities for the Church of St. Paul in Alnwick. Canon Stephen will continue to reside



## Quayside development refused

Planning permission for five apartment blocks comprising 54 apartments at Coble Marina has been refused. See NCC planning website Ref: 21/03144/FUL



**From all the staff at Hadston House**  
we would like to wish everyone a very Merry Christmas  
and a Happy New Year!



### MEAL ON WHEELS

Enjoy a two-course meal delivered directly to your door and ready to be served for £5.50 per person, per day.

The service is available 7 days a week. Our menu is 4 weekly and we are able to cater to specific dietary requirements.

Our service has been rated 5 Star for 9 consecutive years since we began



### LUNCHEON CLUB

We run a luncheon club every Monday and Wednesday 10:30am - 12:30am. Transport is available for those who need it for an additional cost. Once here everyone enjoys a couple of rounds of bingo followed by a freshly cooked two course meal from £6.00. This is an opportunity for people to relieve isolation, meet new friends and spend time with others supported by our staff and volunteers.



### SIT AND GET FIT

We offer a gentle exercise class every Tuesday 10:30am-11:15am. £3.00 per lesson refreshments are available after the class and transport is available for those who require it.

Our instructor loves to have new people and its all about helping people live healthy for longer. Its become a little social group too and everyone is welcome



### YOUTH CLUB

At Hadston House we run a youth club for children who are aged 9 to 18. We have plenty of activities for all to enjoy from Xboxes to PS4's, a pool table, arts and crafts, outdoor games, board games, and many more. Every school Holidays we aim to organise trips for the children to attend all at a subsidised price.

Monday's, Tuesday's and Thursday's Junior 5pm - 6:45pm  
Seniors 7pm - 8:45pm



### COMMUNITY CAFE

Our community cafe is open 7 days a week with a wide range of food available with daily specials. Working in partnership with the Farm Bakery for our bread products.

The cafe is open 9am - 2pm Monday to Friday, 9am-1pm Saturday and Sunday lunches are available for sit-in or take-outs between 11am - 2pm.



### TRIPS

Here at Hadston House we give the opportunity for the members of the public the chance to explore Northumberland, over the last year we have managed to deliver 32 trips across the year plus large trips such as Flamingo Land, Whitby, Beamish, and our yearly Christmas Market trip is York this year.

If you are interested in taking part please get in touch or pop down to our monthly coffee morning to see which trips are on these happen on the 1st Thursday of every month.



Here at Hadston House we give the opportunity for the members of the public the chance to explore Northumberland, over the last year we have managed to deliver 32 trips across the year plus large trips such as Flamingo Land, Whitby, Beamish, and our yearly Christmas Market trip is York this year.

If you are interested in taking part please get in touch or pop down to our monthly coffee morning to see which trips are on these happen on the 1st Thursday of every month.



Take advantage of our winter offer at Burgham Park Golf Club

# Swing into a New Adventure Discover Golf

At Burgham Park Golf Club  
with our fantastic Winter offer

Tee off on your new adventure into the world of golf with  
**Burgham Park Golf Club today!**

We're currently running an introductory offer for those of you that  
have always wanted to try the sport but don't know where to start!

Valid for one month

One round of golf per week

One 30 minute lesson per week

Two driving range tokens per week

5% social member discount in our on-site shop

**For just £150.00**

**A massive saving of £116.00!**

**To get started simply call 01670 787 898**

Offer runs from 01/11/23 to 31/03/24 - Terms & Conditions Apply - Subject to availability



# Recent policing action

## Amble Assault

On Thursday 12 October, we received a report of an assault in Queen Street. Police were quick to apprehend and arrest the suspected offender and enquiries are on-going. If anyone has witnessed the incident or has any information, we ask that you get in touch by calling 101 or using our online reporting service.

## Youth ASB

There have been a number of youth ASB incidents within the Amble area. The neighbourhood team has visited a number of youths from Amble and Alnwick.

Police are working with Northumberland County Council and four tenancy warnings have been issued with regards to crime and ASB. Northumbria Police work closely with housing authorities and Northumberland County Council to take tenancy enforcement action against offenders.

We have also received reports of youths riding e-scooters on the paths and roads. They are hard to see in dark conditions.

Please be mindful of the following if you are considering buying your child an e-scooter as a Christmas gift this year: - Electronic scooters can be classed

as a motor vehicle under the Road Traffic Act 1988 and therefore may require the rider to have the vehicle registered with the DVLA, appropriate insurance and a driving licence and other provisions in place to ensure the legal use.

If you're using a private e-scooter you risk the vehicle being seized under S.165 Road Traffic Act 1988.

## Vehicle ASB

There have been a number of reports of vehicle ASB at Morrisons, Amble and the surrounding area. Officers have conducted targeted patrols, stopping vehicles and speed watch in the area.

The car park of the supermarket has been highlighted as an area for vehicles being used in an anti-social manner. Police will utilise powers under section 59 of the road traffic act to seize and uplift vehicles from offenders.

Please report all ASB incidents via 101 or through our online reporting services. In an emergency always call 999.

*Amble Policing Team -  
PC 3835 Richardson,  
CSO 4089 Fawcett  
PC 8148 Roberts.*



## Amble link to Chelsea FC

Local history hounds Eddie, aged 11 and Eleri Cockayne, aged 7 (pictured above,) were delighted to be asked by members of the Chelsea FC Graves Society to help them on a local hunt.

The Graves Society is committed to finding, recording and celebrating all the players that have served the London based club over the year. Having mapped nearly 290 of the 362 Chelsea first team players, they turned their attention to the listed reserves. It was there that they uncovered James Sproat Nickalls who played for the team between 1928 and 1931. Records suggest that he was born in Amble and lived at 6 Marine Rd.

Andrew Rowley of the Chelsea Graves Society contacted the local children through friends and they were delighted to see

if they could find James's grave – which turned out to be in the Amble West Cemetery. Mr Rowley commented, "recording sports history is so important and its great to find Amble has a connection with Chelsea – the children were so helpful going and finding the grave, knowing his house is still there is a bonus!"

Eddie Cockayne added "it's great finding that Amble has so much history and it would be nice to think that James would be pleased to be remembered nearly 100 years later"

Anyone wanting to know more about this project can find them at Chelsea Graves Society on Facebook. If anyone has any more information about Mr Nickalls or remembers him and his family, let us know via The Ambler.

CARPENTRY | JOINERY | FURNITURE

DINING & COFFEE TABLES  
CHARCUTERIE & CHOPPING BOARDS

BESPOKE FURNITURE

CABINETRY

DOMESTIC CARPENTRY

VISIT OUR SHOP AT 47 QUEEN ST, AMBLE



LUKE HAWKER CO





# Recognition for ex-student

Local lad, Alex Penrose, celebrated winning in the Special Recognition category at the North East STEM Awards. The award recognises people who have made an outstanding contribution to STEM education in the North East. It was awarded to Alex after he reinstated the Computer Science GCSE at James Calvert Spence College.

When Alex joined Alnwick-based manufacturing software company, MSP, as a Software Engineer in 2021, he wanted to give something back to his former school and recognised that reinstating the GCSE on the curriculum would give students the opportunity to learn Computer Science skills from a vital age; an opportunity he didn't get himself.

Alex met with JCSC's headteacher and IT teachers to discuss its importance on the curriculum, explaining how it would have assisted his own career. His commitment never wavered, and the subject was successfully reinstated to the JCSC curriculum. The first intake of students, commenced

this term and it is hoped to introduce Computer Science at A Level.

Alex says: "Studying GCSE Computer Science would have given me lots more confidence with programming tasks at the start of my degree and I'm delighted students now have this chance."

David Smith, Computer Science Teacher at JCSC, said: "This achievement speaks volumes about Alex's impact. His enthusiasm for STEM is contagious. His energy and excitement for the subject has captivated students' attention and ignited a renewed interest in learning. He possesses an understanding of the doubts that learners face, and through empathetic guidance, helps them regain belief in their capabilities."

Marianne Whitfield, MSP Director of Development, says: "At MSP, we are extremely proud of Alex's achievements and this special recognition is well deserved. Alex's efforts supporting students on the Industrial Cadets Programmes and his success in getting the



Computer Science GCSE reinstated at James Spence Calvert College is a testament to his enthusiastic and hardworking nature. If this is just the beginning of Alex's impact on the North East's STEM agenda, I am excited about what's to come".

Alex said: "It's lovely to

receive this recognition and hear so much positive feedback. To think I've been able to improve the education of many students is incredible and I'm so pleased they'll have a chance I didn't get. I hope this inspires more people to look at ways for improving their community or places that have helped them in the past".

## Comment: the Coble Quay walkway closure two years on



A section of the railings has been removed and some bolts have become loosened along the walkway

Northumberland County Council is still in discussions with Amble Marina over the closure of a popular walkway, two years after it was closed.

Regular readers may remember that 2021 (Issue #131 p4) we reported on the extended closure of one section of the Coble Quay walkway. We called on NCC to review their leases and work towards getting the necessary repairs done.

We have regularly asked NCC for updates ever since, with no response until now.

Now, dear readers, they

have finally deigned to reply. "The Council is in discussions with Amble Marina about how we may be able to reopen the footpath and these are still ongoing."

For those wanting a reminder of the situation: The section of the Coble Quay walkway owned by Amble Marina has been closed since the summer of 2021. The reason cited was that the railings had become loose. NCC have a lease on the land and are required to maintain it. However, nothing has been done to repair the footpath or re-open it to the public.

### The Ambler says:

This is privately owned land, which was gentrified with public money; the public were told we were to benefit by use of it as a footpath. NCC has the remains of a 20-year lease on the land which gives them the right to access and maintain the footpath.

However, for the last two years, the attitude of all parties

involved has been to physically and metaphorically shut out the public, and no one seems in any hurry to progress the situation.

Two years ago we called for transparency over the situation. We call again for it now. We consider two years to be an extraordinary length of time to be still in discussions, and we continue to call on all parties to work together and restore the public's access to this footpath.

*The Ambler says: "This is privately owned land gentrified with public money, but the public continue to be shut out. There needs to be transparency."*

### Background:

In 2014, NCC and partners were awarded £1.8million by the government's Coastal Communities Fund to construct the Harbour Village including a 'public footpath' or walkway along the quayside.

The walkway land (which is entirely separate from the apartments) was owned by

two parties; Amble Boat Company and Northumberland Estates. Amble Marina subsequently took over ownership of the Northumberland Estates section. In December 2014 NCC took out a 20 year lease on both parts of the walkway land which enables it to maintain the footpath.

However, the walkway was never officially designated a public right of way, and from our very first questions back in 2021, NCC have been reluctant to talk to us or admit any responsibility for it.

Anna Williams



## December concerts

Two concerts coming up at Warkworth Memorial Hall

### 8 December:

The female voices of Werca's Folk, directed by Sandra Kerr, and the male voices of VoiceMale, directed by Jon Doran. Two of the foremost choirs in our region bring you a touch of Christmas along with traditional and contemporary songs of joy, love and hardship. Expect particular emphasis on the rich and varied tradition of our region together with songs from around the world.

### 9 December:

The Keith Donnelly and Lauren South Christmas show with some crazy bits and a sackful of their singalong, wintry-wonderful songs.

"Keith Donnelly and Lauren South are one diamond duo combining gorgeous singing and musicianship with barely controlled craziness." - Albany Theatre Coventry.

See [www.wwmh.uk/concerts.html](http://www.wwmh.uk/concerts.html) or contact Peter Burnham Tel: 01665 711388. Tickets for our concerts are limited and must be booked in advance.

## Amble Lifeboat Fundraisers

**January** Amble Lifeboat Fundraisers AGM

No coffee morning in January

**18 February 10am -1pm** Coffee morning Amble Lifeboat station

## Art at the heart of Amble

Dry Water Arts Centre have lots of new classes, workshops, events and exhibitions starting 8 January. Check out [www.drywaterarts.uk](http://www.drywaterarts.uk). They also have gift cards for creative Christmas gifts, these can be used for all workshops/classes and events.

Dry Water Arts Centre: Community: Creativity: Culture

## Brew Monday at Circa

On Monday 15 January 2024, there will be a Samaritans "Brew Monday" event at Circa Antiques and Café, Marks Bridge, from 9am – 2.30pm. Samaritans are reminding everyone to reach out for a cuppa and a catch-up with the people you care about.

### Why 'Brew Monday'?

The third Monday in January is sometimes referred to as 'the most difficult day of the year'

but this is a myth. At Samaritans we know there's no such thing as 'Blue Monday' – we all have our good days and our bad days, and those aren't for the calendar to decide.

So we say it's time to stop this myth about Monday being 'blue' and instead start a conversation over a brew! Why not pop along to Circa on the 15th and say hello, pick up a free bookmark or pen? We'll have the kettle on!

## Amble Living History Group

Venue: Dry Water Arts, <https://www.drywaterarts.uk/>  
Cresswell walled garden - Speaker; Barry Mead. Thurs 14 Dec, 7pm

Craggside - Speaker; Liz Finch. Thurs 18 Jan 2024, 7pm  
Transatlantic blues: music and race relations in the North East during the 50s and 60s - Speaker; Brian Ward. Thurs 15 Feb 7pm  
Aln Valley Railway - Speaker; Tom Lloyd. Thurs 21 March, 7pm  
The Blackett Family - Speaker; Al Kirtley. Thurs 18 April, 7pm  
Seaton Delaval Hall - Speaker; Liz Finch. Thurs 16 May, 7pm  
Four amazing historic structures - Speaker; Ian Hume. Thurs 20 June, 7pm  
The Greys Of Howick - Speaker; Peter Regan. Thurs 18 July, 7pm



  
**THE LOUNGE BAR**  
 Drink . Relax . Enjoy



COFFEE  
 BEER  
 WINE  
 SPIRITS  
 COCKTAILS  
 LIVE MUSIC





20 BRIDGE STREET, AMBLE





**F**C Amble Vikings U11s would like to say a massive thank you to our strip sponsors The Old Boathouse. Martin and Ruth Charlton kindly agreed once again to sponsor new strips for us which is much appreciated.

Over the last few seasons it's not only strips they have sponsored us with, but also rain jackets, hats, bags and tracksuit tops. Their continued support is a massive help to our team.

Pictured above is Martin, our coaches and the lads proudly wearing their new strips.

## Rotary golf match raises £5000

**A**mble and Warkworth Rotary's charity tournament organised at Alnmouth Golf club, Foxton, on 25 September saw 26 teams take part. Although it was windy at times, the rain held off resulting in an enjoyable but challenging day for the golfing competitors.

The eventual winners, the Boyden Group team, captained by John Forester, were congratulated by event organiser Rotarian Phil Derry.

This event is one of the major fundraisers for the Amble and Warkworth Rotary club. The money raised will be used over the coming year to support the Great North Air Ambulance Service, The North Northumberland Hospice and the Sir Bobby Robson Foundation.

## Classic Jazz and Blues band

**H**ighlights Rural Touring Present:  
Hayley's Little Big Band

Sunday 17 December, 7:30 p.m. – Parish Hall

Classic jazz and blues numbers, bringing you a lively evening of music celebrating such legends as Ella Fitzgerald and Billie Holiday. The West Yorkshire based trio features Hayley Doherty on vocals, Geoff Nemec on guitar and Persia Babayan-Taylor on double bass. Dancing is definitely encouraged!

Tickets: Adults £12, Children (15 and under) £6 from N & F Young, Queen St.

## Old People Actively Learning

**A**mble's OPAL (Old People Actively Learning – "Learning Through Fun") music appreciation group.

Time: 13:00 - 15:00 on the second Thursday of every month

Location: FOURWAYS 2 (3rd floor: lift available), 6 Dilston Terrace, Amble, NE65 0DT Entry fee: £3 per person (tea and coffee are provided)

Dec 14th - Christmas No 1s; Jan 11th - Alphabet Soup

Feb 8th - Judith Durham; Mar 14th - Berry Gordy

Apr 11th - American music; May 9th - Brothers Pt. 2

June 13th - James Last; July 11th - Oh, Boy

You do not need to be a musician or even be able to sing; you just need to enjoy listening to – and finding out about – different types of music. All are welcome!

For further information, please contact Eileen and Mel Brown on 01670 221924 or eileen.opal77@gmail.com

## NTC at the Dovecote centre

**O**ver Christmas, Northumberland Theatre Company (NTC) will produce a touring production of A Christmas Carol. There will be two performances at The Dovecote Centre on 9 and 10 December at 6pm and tickets can be obtained from Eventbrite via the NTC website: [www.northumberlandtheatre.co.uk/news-and-upcoming-shows/](http://www.northumberlandtheatre.co.uk/news-and-upcoming-shows/)

Our resident cinema club will also be showing a range of films over the winter period; contact details at the end of this article.

Like many theatre companies, the Covid-19 pandemic and cost of living crisis has hugely impacted NTC's

group, office space or event with competitive room hire rates, please get in touch at email address below.

We also offer costume hires at competitive rates from our large store at the Dovecote Centre. Perfect for local professional or amateur theatre companies, some of the highlights of our collection include military uniforms and hats, period dresses and pantomime costumes.

NTC's work at The Dovecote Centre would not be possible without the support of our volunteers who assist our three part time staff members to deliver events. Our volunteers



ability to produce work for our communities. These pressures, coupled with the damage to our building during Storm Arwen and subsequent acts of vandalism have slightly delayed our plans to develop The Dovecote Centre into a thriving cultural hub.

This year, however, The Dovecote Centre has begun hosting more community groups and events. Our community room, office space and main hall have been used for baby classes, cinema clubs and local small businesses.

So, if you are looking for a place to hold a community

regularly provide front of house, refreshment, and informational assistance to our patrons. If you or someone you know might be interested in volunteering with us or have any questions about volunteer roles at The Dovecote Centre, don't hesitate to contact us by phone, email, or pop into the venue during our opening times.

Thank you for your continued support. NTC's office opening hours are 10am-3pm Monday, Tuesday, Thursday, and Friday. Tel: 01665 713655. Email: [admin@northumberlandtheatre.co.uk](mailto:admin@northumberlandtheatre.co.uk).

## Amble writers group

**T**ime: The first and third Wednesday of each month from 7 till 9 pm. Location: The Masons Arms on the corner of Woodbine Street in their side bar (the left-hand door inside the entrance). Wednesdays 6 and 20 December

Anyone with an interest in writing of any kind (poetry, songs, plays, novels, short stories, journalism or blogs) is welcome to come along and join the fun.

For further information, please contact Eileen and Allan Sutherland at [eileensutherland1951@gmail.com](mailto:eileensutherland1951@gmail.com)



## Christmas Bingo Madness

**A**mble Bingo Madness group are supporting the Amble Food Bank by holding a Tin and Ticket Prize Christmas Bingo on Friday 15 December at the Masons Arms, Amble.

Doors open at 6.30pm and eyes down for 7pm. We are grateful to the amazing support of the Masons Arms, Amble, who jumped straight in and offered a venue and raffle prize. Tickets are £1.00 and entry is a suitable product for the food bank.

Prize bingo will be held, a raffle and prizes for the best Christmas jumper and fancy dress. We will have bingo dabbers for sale on the night. We are appealing for prizes suitable to be used for the raffle and bingo, so as much as possible goes to the Food Bank.

Tickets will be available from the Masons Arms and The Seafood Centre and we are hoping from some shops on the Queen Street.

We have a couple of volunteers, a few more would be lovely. Anyone who wishes to donate contact the group via the Amble Bingo Madness Facebook page, and you can drop any donations off to the Masons Arms.

## Carol concert

**S**unday 17 December 3pm St Paul's Church, Prudhoe St Alnwick & District Choral Society **CAROL CONCERT**  
With Seasonal Music for choir and audience  
Peter Brown (Conductor), Alan Gidney (Organist)  
Admission £12.50 at door. Students Free.

## Rotary Club Santa's Sleigh

**Thursday 14 December:**

Amble West:

1. Junction Robson's Way + Williams Close (5.00 to 5.11pm).
2. Junction of Gloster Park + The Close (5.13 to 5.23pm).
3. Junction of Acklington Street + Westfield (5.27 to 5.37pm).
4. Junction of Alnwick Way + Etal Drive (5.42 to 5.52pm).
5. Junction of Ford Crescent + Warkworth Way (5.53 to 6.03 pm).
6. Junction of Aidan Road + Lindisfarne Road (6.06 to 6.16pm).
7. Straffen Court (6.18 to 6.28pm).
8. Junction of Priory Park + Tynedale (6.31 to 6.41pm).
9. Junction of Glendale + Dandsfield Square (6.44 to 7.00 pm).
10. Junction of Links Avenue + Burton Road (7.02 to 7.12 pm).
11. Junction of Holywell Crescent + Cuthberts Ave (7.14 to 7.24 pm).
12. Ivy Street. (7.28 to 7.38pm).

**Friday 15 December:**

Warkworth:

1. Centre of Montagu Avenue- (5.15 to 5.30 pm).
2. Bottom of Montagu Avenue next to Barns Road (5.31 to 5.41 pm).
3. Centre of Warkworth Avenue (5.43 to 5.53 pm).
4. Centre of Knights Road (5.55 to 6.05 pm).
5. Junction of Morwick Road + River Bank (6.10 to 6.20pm).
6. Elm Grove (6.23 to 6.35 pm).
7. Hermitage Farm, Station Road: (6.38 to 6.48pm).
8. Dial Place: Bertram's + Warkworth House Hotel (6.50 to 7.00pm) and The Mason's Arms and The Hermitage Inn ( 6.50 to 7.00pm ).

Rotary will also be present at Morrisons in Amble with the sleigh 11.00am - 5.00 pm on 19, 20, 21, 22 and 23 December with Santa being in attendance from 4.00pm.

## Christmas services

**Sacred Heart and St Cuthbert RC Church:** 24 December - 5pm  
First Mass of Christmas

**Trinity Methodist Church:** 17 December - 4pm Carol Service  
24 December - 10:30am Morning Worship  
24 December - 11:30pm Midnight Communion

**St Cuthberts:** 10 December - 6pm Carol Service

24 December - 6pm Christingle Service

No Midnight Service this year

25 December - 10am Christmas Day Holy Communion

**Hauxley Chapel:** 17 December - 4pm Carol Service

## Live Nativity

**Saturday 9th December**

**11.30am—3.30pm**

*A Bethlehem experience  
for the whole family!*

**Live Animals  
Interactive displays**



**Radcliffe Club, Amble NE65 0RA**



with participation from  
the local community

*Free entry*





## Christmas Bingo Madness

Amble Bingo Madness group are supporting the Amble Food Bank by holding a Tin and Ticket Prize Christmas Bingo on Friday 15 December at the Masons Arms, Amble.

Doors open at 6.30pm and eyes down for 7pm. We are grateful to the amazing support of the Masons Arms, Amble, who jumped straight in and offered a venue and raffle prize. Tickets are £1.00 and entry is a suitable product for the food bank.

Prize bingo will be held, a raffle and prizes for the best Christmas jumper and fancy dress. We will have bingo dabbers for sale on the night. We are appealing for prizes suitable to be used for the raffle and bingo, so as much as possible goes to the Food Bank.

Tickets will be available from the Masons Arms and The Seafood Centre and we are hoping from some shops on the Queen Street.

We have a couple of volunteers, a few more would be lovely. Anyone who wishes to donate contact the group via the Amble Bingo Madness Facebook page, and you can drop any donations off to the Masons Arms.

## Carol concert

Sunday 17 December 3pm St Paul's Church, Prudhoe St Alnwick & District Choral Society **CAROL CONCERT** With Seasonal Music for choir and audience Peter Brown (Conductor), Alan Gidney (Organist) £12.50 at door. Students Free

## Christmas services

**Sacred Heart and St Cuthbert RC Church:** 24 December - 5pm First Mass of Christmas

**Trinity Methodist Church:** 17 December - 4pm Carol Service

24 December - 10:30am Morning Worship

24 December - 11:30pm Midnight Communion

**Hauxley Chapel:** 17 December - 4pm Carol Service

## Rotary Club Santa's Sleigh

**Thursday 14 December:**

Amble West:

1. Junction Robson's Way + Williams Close (5.00 to 5.11pm).
2. Junction of Gloster Park + The Close (5.13 to 5.23pm).
3. Junction of Acklington Street + Westfield (5.27 to 5.37pm).
4. Junction of Alnwick Way + Etal Drive (5.42 to 5.52pm).
5. Junction of Ford Crescent + Warkworth Way (5.53 to 6.03 pm).
6. Junction of Aidan Road + Lindisfarne Road (6.06 to 6.16pm).
7. Straffen Court (6.18 to 6.28pm).
8. Junction of Priory Park + Tynedale (6.31 to 6.41pm).
9. Junction of Glendale + Dandsfield Square (6.44 to 7.00 pm).
10. Junction of Links Avenue + Burton Road (7.02 to 7.12 pm).
11. Junction of Holywell Crescent + Cuthberts Ave (7.14 to 7.24 pm).
12. Ivy Street. (7.28 to 7.38pm).

**Friday 15 December:**

Warkworth:

1. Centre of Montagu Avenue- (5.15 to 5.30 pm).
2. Bottom of Montagu Avenue next to Barns Road (5.31 to 5.41 pm).
3. Centre of Warkworth Avenue (5.43 to 5.53 pm).
4. Centre of Knights Road (5.55 to 6.05 pm).
5. Junction of Morwick Road + River Bank (6.10 to 6.20pm).
6. Elm Grove (6.23 to 6.35 pm).
7. Hermitage Farm, Station Road: (6.38 to 6.48pm).
8. Dial Place: Bertram's + Warkworth House Hotel (6.50 to 7.00pm) and The Mason's Arms and The Hermitage Inn ( 6.50 to 7.00pm ).

Rotary will also be present at Morrisons in Amble with the sleigh 11.00am - 5.00 pm on 19, 20, 21, 22 and 23 December with Santa being in attendance from 4.00pm.

## Live Nativity

**Saturday 9th December**

**11.30am—3.30pm**

*A Bethlehem experience for the whole family!*

**Live Animals**

**Interactive displays**



**Radcliffe Club, Amble NE65 0RA**



with participation from  
the local community

*Free entry*

