



The Ambler

Amble's Community Newspaper

Issue 150 Feb/Mar 2025

Veterans receive nuclear test medal



Christmas Island medals have been awarded to two local veterans by the Lord Lieutenant of Northumberland.

Bill Cassidy (pictured) and the late George Robson were recognised for their service.

Photo: Katrina Cassidy

More on Page 4

Improvements introduced at JCSC after 'disappointing' results



New Head James Andriot came into post last September. He has already introduced measures aimed at improving grades

The new Head of James Calvert Spence has introduced a series of measures aimed at improving the school's performance and attendance levels, after "disappointing" A-level, KS4 and KS2 results were published.

The results showed a decline in reading, writing and maths compared to the previous year.

James Andriot who took over as Head of JCSC in September told *The Ambler*, "We were disappointed but not shocked, and there is still work to do."

He pointed out that results in some categories were comparable to other local schools. And it is generally acknowledged that although Covid lockdowns were four years ago, the effects on young people's education continue to be noted.

Disappointing results

Only 17.7% of JCSC pupils achieved grade 5 or above in GCSE English and Maths. This is a drop of 10% from the previous year. The national average is 46% while the average across the county is 41.5%.

In KS2 only 30% of pupils achieved the expected standard in reading, writing and maths (the national average is 61% while the county average is 56%).

The average A-level result for JCSC students is a D+ (the national average is C+).

However, there had been notable achievements last summer by individual pupils, not least one A level student who achieved 3 A* grades in Biology, Chemistry and Maths and has gone on to Cambridge University. Another student achieved three 9s in GCSE Biology, Chemistry and Physics; and four 8s in Maths, History, Geography and French.

Speaking to *The Ambler*, Mr Andriot said that some of the newly published results were similar to those of other schools in the area.

He explained that the data did not include resit results which have just taken place: "We are pleased with the resit results where 60% obtained a grade 4 or above," he said.

He acknowledged there was still work to be done. "I want our young people to be leaving with good Maths and English. There's lots to do and we have a strategic vision to help the young people get better results."

The curriculum at JCSC is being developed to include a wider offer, attendance is being encouraged and rewarded, and at the same time, young people are

being given better feedback and offered more advice and support where needed."



Amy Patterson went on to study Veterinary Medicine at Cambridge University

Focus on attendance

Since the summer, students in Year 11 now stay for an additional period to help improve their grades. They have expanded a mentoring programme where barriers to learning can be identified and addressed, and where mentors can promote careers and future prospects to the students.

In the Sixth Form there has been a big emphasis on daily attendance.

Mr Andriot said, "We want the students in school more, and studying more. Study time in school is vital for students' attainment, so we've invested a good deal promoting the culture of study and improving study spaces, and we are emphasising how best to use independent study time."

Attendance levels were also cited as being a contributory factor in last year's disappointing results, so the school has been working with the young people and their parents to address the issue. Now small rewards or certificates are handed out at the end of term in recognition of better attendance levels.

At the same time, more than 30 new lunchtime clubs have been set up, helping to make the school somewhere the children want to spend time.

The school is asking parents to back them in their drive to improve attendance.

"If a young person is not in school, they're not learning," said Mr Andriot. "Amble parents have been very supportive on the whole and I am grateful for their support. Every parent I've met so far, wants to do the best for their kids."

Anna Williams

Following in his father's footsteps

It's one of those really cold days at the beginning of January. A young man, wrapped up in a coat and gloves, is selling hot sweet chestnuts in Amble Town Square. The bright sunlight contrasts with the freezing temperatures, so the heat from the chestnut roasters is welcome as I draw near.

It's not a busy time of year with passers-by, and this is a new experience for both the young man and for many locals, some of whom haven't tried this seasonal delicacy yet, but it reflects a tradition of entrepreneurialism which is not new to the Friendliest Port.

A chalk board proudly explains what is on offer. "These aren't just chestnuts - they're luxury nuts, roasted to perfection and certified by Mother Nature herself. Treat yourself to the most exclusive snack of the season." It's clearly been written by someone with a talent for marketing.

Ahmad Alkafafi is 20 years old. He lives in Amble with his mother and sister. He went to JCSC and is now studying at Newcastle College. Last year he completed his Level 1 in

Business Studies, this year he is studying catering. During weekends and holidays this entrepreneurial young man has set himself up selling hot chestnuts.

I asked him why: "Cause it's unique," he grinned, then his smile faded a little. "And also, because it's how my Dad started his business, back in Syria."

And I learned about how his dad was one of Bashar al-Assad's victims many years ago when Ahmad was just a young child. Not only was his father killed, but the family lost everything, their home, the olive groves, and an entire business set up by his father.

Ahmad escaped Syria with his mother and sister, first to refugee camps in Lebanon, then, qualifying under a UN scheme, the three of them came to Britain.

I asked how he felt about the situation in Syria now Assad has left. "It's really good, I am pleased that he's gone."

Despite having an unbelievably difficult start to life, Ahmad is obviously determined to try to make something of



himself here in Amble, his adopted home, and a place where he feels safe.

It's a learning curve for everyone. Ahmad recognises some people are not used to sweet chestnuts. "Some people are surprised, they're not sure about it. But they're really good for you, they're full of protein."

His idea is to start small and keep things seasonal, so it won't be just roasted chestnuts he sells. He has all the necessary food hygiene certification and

insurance documents, and has permission from Amble Development Trust to sell his products in the Town Square. Visit him throughout weekends and holidays and see what else he has on offer.

We are the Friendliest Port, and we can all appreciate this universal connection: a young entrepreneur quietly but proudly following in his father's footsteps. Good luck Ahmad.

Anna Williams

TULIP



DESIGN

KITCHENS

BEDROOMS

BATHROOMS

HOME OFFICE

Tel: 01665 497397



Email: info@tulipdesign.uk

Monday - Friday 9am- 5pm

Saturday 9am-3pm

Sunday by appointment only



BUILDING UPON their current success, Tulip Design are pleased to announce the opening of their second Showroom at 9 Wellwood Street, to compliment the current showroom at Suite 4 The Fourways.

After a long and extensive refurbishment of the property they are looking forward to welcoming customers old and new showcasing the extent of services offered.

From simple bath out and shower tray in to fully fitted bathrooms, hand built bespoke wardrobes, kitchens and home office fitted furniture.

Owner Shaun Harvey has 23 years' first hand industry experience - from design and manufacturing, through to installation including a full turn key project managed service. We have a no obligation free design and quotation service and also offer a supply-only option on all goods.

Health Trainer service at Amble Library

The Health Trainer service is a community focused healthy lifestyle support service for anyone living in Northumberland aged 16 and over that can support the residents of Northumberland with matters such as:

- Weight Management
- Dietary Support & Advice
- Increase Physical Activity
- Reduce Alcohol Intake
- Reduce Smoking
- Overall Healthy Lifestyle Improvement Support

The health trainers have appointments with service users face to face and via phone call depending on the individual preference. We do run a 1-2-1 support clinic out of Amble library and are always happy to take new referrals for anyone interested in support.

Northumberland residents can self refer by either calling the Health Trainer Service on 01670 623840 or by submitting a contact form to our main email address on our website <https://www.livingwellnorthumberland.co.uk/>

Jack Barber



Thank you to Dave Cockayne for this wonderful photo: New Year Rainbow

Youth Project are looking for volunteers

We welcome Lara Young as our new CEO who will be responsible for giving new direction and support to the variety of projects we run.

Lara has worked with AYP before and brings a wealth of community experience and business acumen to the project.

She said "I am ambitious in my hopes to find ways to help younger members of the community grow, shine and flourish!"

Lara wants to build our volunteer base. We are looking

for people to work with us on our Lets Get Cooking project teaching food preparation skills and on our UnPalletAble project making things from scrap wood.

We also would like support with a Coding and Gaming Club as well as our Youth Café.

We are developing a training program that can lead to formal qualifications and a route into youth work and further study.

Matthew Connolly chair at AYP said, "Lara will bring a community building approach to our work and this will benefit

the young people and townsfolk in Amble. As well as youth work volunteers we welcome anyone who has experience in the sector as a trustee of our charity. What can you do to help?"

AYP also have a young leaders programme that teaches young people vital life and job skills and paid work in the holidays for those on the programme.

If you or your young people would benefit from connecting with AYP please contact Larap@ambleyouthproject.org.

Recognition of participation in nuclear testing programme has taken sixty seven years

>> continued from front page

Caroline Pryer the Lord Lieutenant of Northumberland presented two Christmas Island medals to Bill Cassidy (RAF retired) and to the family of George Albert Robson who sadly passed away in 2023.

The Nuclear Test Medal was launched by the government in 2023 after a sustained campaign to have UK personnel recognised for their participation in the tests, known as Operation Grapple. It is awarded to UK Service and civilian personnel, and individuals from other nations, who served at the locations where the UK atmospheric nuclear tests were conducted at Christmas Island during 1957 and 1958.

Thousands of British Service personnel were posted to the island at that time, to take part in the programme. Many were

given no radiation protection.

The presentation was held in front of over 50 veterans and families, at the Amble Inn on Saturday 18 January during the Amble Veterans Breakfast Club monthly get together.

Bill Cassidy

Bill joined the Royal Air Force in 1954 completing his service in 1977. He was posted to Christmas Island in 1957, where he witnessed two H bomb explosions from only 20 miles away.

He then witnessed the A bomb from three miles away. The H bomb was several times larger than the bomb used on Hiroshima. He was given no radiation protection.

George Albert Robson

George was called up on National Service, and became a



Lord Lieutenant of Northumberland, Bill Cassidy and Mayor Craig Weir

Corporal in the Royal Engineers, 38 Corps. He was part of Op Grapple, on Christmas Island between 1957 and 1958.

George always shared fond memories and many stories of his time in the Armed Forces. Sadly he passed away on 13 May

2023 aged 85. George was aware he would receive the medal and was honoured to be recognised along with his comrades for their contributions.

His widow Sylvia and others in George's family received the award on his behalf.

Work starts on new affordable bungalows for Amble



Work has started to build 14 new bungalows in Amble which will be owned by Northumberland County Council and rented out at an affordable rate to local people in housing need.

The scheme will see the bungalows built on five old county council garage sites across the town and has the support of the Amble Town Council and Amble Development Trust.

The bungalows are being built with help of funding from Northumberland County Council and will be predominantly two-bedroomed. They will be situated on St

Lawrence Avenue (three), Kennedy Road (four), Alndale (four) and Andrew Drive (three).

The first bungalows are being built on Kennedy Road and are expected to be completed in 2025.

Northumberland County Councillor Colin Horncastle, Cabinet member with responsibility for housing said: "We know there are residents in Amble who are looking to down-size from larger properties but who want to stay in the town and live independently, close to their neighbours, family and friends. These small-scale

affordable housing schemes on brownfield sites will enable them to do just that, while freeing up larger properties in the town for other families in housing need."

The accessible accommodation will also be available to younger residents and small families in need of level access accommodation.

Zero carbon technologies will be used to power the new homes. The eco-friendly bungalows will have an insulated timber frame and roof, air source heat pumps and solar panels to create homes with the best energy performance ratings and replace the use of non-renewable energy like gas and oil.

Over the last eight years, around 1,900 affordable homes have been built in Northumberland which were secured through the planning process. More than 1,100 were affordable homes for rent, delivered by the council and partner housing associations. The remainder provided opportunities for affordable homeownership through a range of tenures including shared ownership or purchase at a

discount. This new housing, in an area of identified need, will be a welcome addition to the community of Amble.

The council has been working with North East based developer HUSK to develop the bungalows, using a patented, cost-effective construction method.

More information about the HUSK concept can be found at: <https://www.husk-uk.com>

Anyone interested in renting one of these properties will need to join Northumberland Homefinder – <http://www.northumberlandhomefinder.org.uk> to apply. Once the properties are built, they will be added to the Homefinder register.

Under the Homefinder allocation system, you must be registered with the site before you are able to bid on any available properties. Once registered each applicant is assessed on their housing need and given a priority banding. This banding is then used to prioritise any bid on a property.

The Homefinder website will also show all homes available for letting.

Quality of life is important for everyone and we know that care is better at home. We provide compassionate care and support for adults in Northumberland. Day or night, our friendly professional team can help.

Call Julie on 0797 169 1631 to arrange an informal chat and see if we can meet your needs.

Could you join our team?
Come and work for us and love going to work!



Call Julie now on 0797 169 1631

**PHILIP
PARKINSON**
Homecare



Amble Food Bank update

We are fortunate to have such a generous community. We were overwhelmed by the food, treats and financial donations in the lead up to Christmas.

Sadly, demand for our services continues to rise, putting pressure on our food, financial and volunteer resources. Despite your generosity we are still spending over £2,000 per month on extra items.

We try to acknowledge all our benefactors on our Facebook page and we have received generous donations from Alexa's Canine Trust, The Amble Inn, Amble and Warkworth Women's Institutes, Amble Links Coastal Park, Dry Water Arts, Harbour Lights Church, Heatherdale Care Home, Iceland Morpeth and The Old Boat House Restaurant.

Thanks to Morrison's for organising pick-up bags, Tesco Express, Hadston and Amble Co-ops for their food bins and to the latter for the Sunday Food Share items (clients benefit from

food that would otherwise go to waste). Finally, thanks to the Farm Shop at HMP.

If you prefer to buy items, you can leave them in our cage by the tills. There are food donation bins near the doors at the Amble and Hadston Co-ops and Tesco Express in Amble. Please note we are unable to accept any items containing alcohol.

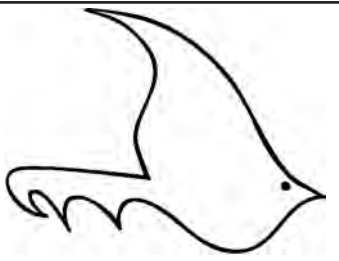
Thank you for your support, without it we simply would not be able to help those in need!

How to contact us

Cash and cheques can be addressed to us and posted through the letterbox at Trinity Methodist Church. Bank transfers can be made to Amble Food Bank, sort code 77-20-04, account number 17925260. You can Gift Aid any donations (e-mail us for a form).

You can get a referral through the CAB or contact Northumberland Communities Together on 01670 620015, 9-5pm. E-mail: amblefb@gmail.com

TELEPHONE ORDERS WELCOME
01665 710 442
MONDAY TO SATURDAY: 11.30AM-9.00PM SUNDAYS: 11.30AM-2.30PM
***** NORTHUMBRELAND COUNTY COUNCIL
1 BROOMHILL STREET AMBLE NORTHUMBRELAND NE65 0AN



The Ambler

COMMENDED at the Newspaper of the Year awards 2023

Fourways 2, 6 Dilston Terrace
Amble, Northumberland NE65 0DT
Tel: 01665 712929

www.theambler.co.uk
editor@theambler.co.uk

Facebook: TheAmbler
X/Twitter: AmbleByTheSea
YouTube: AnnaAtTheAmbler1
Threads: AnnaAtTheAmbler
Bluesky: AnnaAtTheAmbler
Instagram: TheAmblerNews



Editorial Team:

Vivienne Dalgliesh, Norma Hinson
Ian MacKarill
Editor: Anna Williams

Distribution:

Charlotte, Wendy, Janette
Ian, John, Richard

Printing:

CBS World, Alnwick

Would you like to join
The Ambler team? We welcome
contributions and help from anyone
who would like to volunteer.

Thanks to all our contributors, sponsors and advertisers:

Community Foundation - Coquet Fund
Rotary Club of Amble and Warkworth



The Ambler is a proud member of
the Independent Community News
Network

The Ambler is a project of
Amble Development Trust



The Ambler is printed six times per
year. The views expressed in The
Ambler and on our website are not
necessarily those of the Editorial Team

2025 Submissions dates:

#150 - 6 Jan #153 - 20 Jun
#151 - 21 Feb #154 - 29 Aug
#152 - 11 Apr #155 - 31 Oct

Plus ça change

The beginning of the year has not been exactly quiet, with closures announced at the Co-op and the Bede Street Club. We know the TSB will close later in the year, and we understand there are discussions on setting up a Bank Hub somewhere in the town. We'll keep you posted. But in happier news, some empty retail units on Queen Street have already seen /or are about to see new businesses, and we welcome them to the Friendliest Port.

Tree lovers will have been saddened if not surprised to see Persimmon leaping into action and felling all the trees in the copse at the fish roundabout. Nevermind, I'm sure we will soon get used to the giant advertising hoardings and flags welcoming us all into Amble for the next however-many years. I don't know about you, but I'd be happier if they fixed the road into/around Hauxley Grange before embarking on their next development, but what do I know? (Hey, I've been writing these editorials for 25 years now so forgive me if I grumble every now and then!) And to be fair, in the next few months every entrance to Amble is going to be decorated with housing

developers' advertising as the town expands in all directions except into the sea.

Looking back through the archives while researching the recent history of the Co-op in Amble, I was surprised when revisiting our letters page of Issue 43, where some people were angry at the number of Co-ops! Several people bemoaned the lack of competition in the town, one called it a monopoly, another writer described a "vice-like grip". The latter told how she had just put in her first home delivery order to ASDA. This was Spring 2007. Remember, we didn't have a Morrisons or a Tesco Express then. Amble has certainly changed a lot.

In that editorial (*which was a good deal less grumpy than this one*) we asked people to shop local and support our independent businesses. We still stand by that! Elsewhere in the same issue was a call for more affordable housing, and complaints of a reduction in Police presence.

So there you go. Proof, as ever: the more (some) things change, the more (others) remain the same!
Anna Williams

WHAT YOU SAY...

Amble F.C and Swarland F.C

In reply to Tony Martin's article on Amble Football clubs (online and p12). It was a very good read. However, Amble F.C (2006-2011) was separate from Swarland F.C.

Swarland F.C was indeed formed in 2003 and had 30 plus footballers from Amble. The intention in 2002 was to form a team in Amble but due to Amble Welfare being used by Alnmouth F.C the club was formed at Swarland with Trident Soccer players from various local academies (Amble, Alnwick and Swarland) and known as Swarland F.C.

In 2006, the opportunity to use the facilities at Amble Welfare presented itself and the Northern Alliance team was renamed Amble F.C whilst the North Northumberland League team remained as Swarland F.C and was used as a "feeder" team.

Amble F.C Reserves continued in the Morpeth Sunday League as a combination of the Alliance and North Northumberland teams and won the Morpeth Sunday League Division 3 in 2007/08 and Morpeth Sunday League Division in 2008/09.

The remaining Swarland F.C team then became Amble F.C "A" team in 2007 and played in the North Northumberland League.

Maintaining three teams was a challenge but Amble F.C is proud to have had over 300 local players of all ages play football for their home town.

Thanks for taking the time to acknowledge the work and efforts of all those who for many years dedicated their time to providing a platform for football in Amble.

Ryan Jobson
via email

Christmas living nativity

The weather was perfect, although cold, it was dry and sunny for the Harbour Lights Church second annual Living Nativity scene, held outside the Radcliffe Club on Charles Road. Adults and children alike enjoyed the Christmas story being acted out by actors in professional costumes accompanied by carol singers in fine voice.

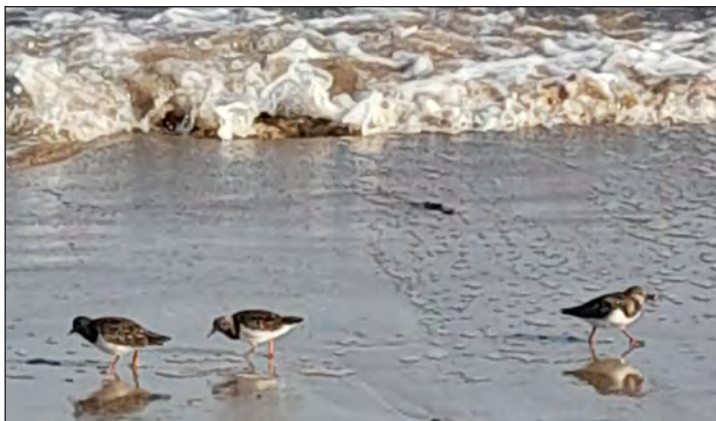
The children especially enjoyed the live animals - donkeys, sheep and goats - provided by Blackberry Donkeys and Animals About Town. To see the wonder on their faces as they approached the manger to interact with



Joseph, Mary and the baby Jesus was such a delight. A massive thank you to all those who took part and made the event such a success! The

short video of the event can be seen on the church website: harbourlightchurch.com
Pastor Neil Sayers
Harbour Lights Church

Hugh's views: For the love of birds



Back in November last year it was with some sadness but no great surprise I read that the slender billed curlew had been declared extinct. The first bird from the Europe/West Asia/North Africa region to be declared thus since the last pair of Great Auks, a large flightless seabird, were killed in Iceland in 1844. The slender billed curlew nested in central Siberia and

wintered on the North Moroccan coast where the last individual was recorded in 1995. Reasons for the decline of this species, only identified as a separate species in 1817 are generally given as loss of breeding habitat to agriculture and relentless shooting of birds around their wintering grounds. As recently as 1993 the total population was estimated at no more than one

thousand individuals.

However, in May 1998 a group of birders at Druridge Pools, near Hauxley, spotted an unusual curlew with a number of more common Eurasian Curlews. The bird was videoed, photographed, sketched and widely discussed over the next four days while it remained at Druridge Pools and was announced to be a slender billed curlew.

The evidence was presented to and accepted by the British Birds Rarities Committee. The British Ornithologists Union Records Committee followed suit and the Druridge Bay bird became the first slender billed curlew to be recorded in Britain. Quite a coup for this region.

Then in October 2004 another bird showing similar characteristics was discovered at RSPB Minsmere. This time DNA was collected, analysed and the bird was eventually declared to be a first year Eurasian Curlew. This discovery threw

doubt on the identification of the Druridge Pools bird so it was decided to re-examine the evidence which previously had been accepted. After years of re-examination including comparison with museum skins, the last having been collected in 1983, it was finally decided in 2013 to remove the slender billed curlew from the British List although the decision was by no means unanimous.

However, the loss of the slender billed curlew, described by conservationists as 'fundamentally devastating' has now focussed attention on several other threatened shore birds such as turnstone (pictured) and dunlin and even the Eurasian curlew all of which can be found wintering on the shore and in coastal fields around Amble. Up to eighty curlews can sometimes be seen wintering in the fields adjoining the Links Road but for how much longer?

Hugh Tindle

Bede Street Club closes

It's the end of an era as the Bede Street Club has now closed its doors for good.

The club was saved from administration in 2018 by members George and Carol Nelson, but now they and the majority of the other shareholders have decided that running the venue in its current form is no longer financially viable. The building will be sold.

The club is owned by shareholders who are requested to make sure they have their shares validated.

Carol Nelson told the Ambler that she will be at the club premises on Bede Street

on Tuesday mornings from 8.30am – 12.30pm, should any remaining shareholders want to contact her.

The members' club was built in 1902 and has played an integral part of Amble's social life through two world wars and several financial downturns.

Despite the sad decision to close, Carol tells us there could be some good news in the not-too-distant future, so watch this space!

Anna Williams

For the story of how the club was saved from administration see Issue #119 p1 Taking back control: one year on



THE MAD JAM WOMAN & Pride of Northumbria

Award winning Preserves & Relishes



• As seen on James Martin's Saturday Morning show

Fourways One
Bridge St, Amble NE65 0DR
07766 857680

Also available at the Seafood Centre
www.madjamwoman.com

edie pebble

Pod 14 Amble Harbour Village



Beautiful handmade gifts, vintage treasures and nautical decorations

AA PIANO TUNERS UK

Piano tuning & repairs

Colin Nicholson Dip. Mus.

Phone: 0791 485 4072

E: aatuners@hotmail.com

W: www.aatuners.com



ColourArt Painting & Decorating

Call for a free estimate!

07870 935641

Find us online at colourartdecorations.com

Painting & Decorating



Holiday homes Domestic Commercial

'Pop up Police station'

Police are hoping to hold their 'Pop up Police Station' events every two months at Amble Library. These events have been organised, where you can speak to an officer to discuss issues in your community and obtain crime prevention and safeguarding advice.

A spokesperson said, "We are working hard to keep our community safe. Your engagement is vital, any information you can provide will assist in tackling crime and anti-social behaviour.

This can be done through speaking to us face to face at an event or giving information anonymously through the Northumbria Police website or Crimestoppers."

In related news, a warrant was executed in Amble before Christmas which resulted in two arrested following a quantity of drugs being seized.

Students need work experience

Year 10 students from JCS are to complete work experience in the local community in the week commencing Monday 23 June. The school is looking for local businesses who could help. Work experience provides young people with increased confidence, improved communication and interpersonal skills, and increases their employability skills.

Are you a local business that would be able to accommodate a work placement for one of our young people? If so, please email, Mrs Sophie Donohoe, Personal Development and Character Education Lead on: sdonohoe01@jcs.co.uk.

Whole-school careers fair

Are you a local business that would be interested in showcasing at our upcoming careers day on Wednesday 26 March?

We would like to display the wealth of industries available to our students in their local area so your attendance would be valuable and greatly appreciated. Each of our year groups will have the chance to meet with employers and businesses to ask questions and find out more information about career pathways and opportunities.

For more information or to book your place please email, Mrs Sophie Donohoe: sdonohoe01@jcs.co.uk.

Some new hope for Coquet Island's seabirds



Juvenile Roseate Tern

Some good news in a recent sea of worry. A colony of one of the UK's rarest breeding seabirds, devastated by Avian Influenza in 2022 and 2023 has produced more chicks than ever before.

A record number of 191 Roseate Tern chicks hatched on Coquet Island this year and 92% of those young birds went on to fledge (175 fledged out of 191 hatched).

The productivity of Roseate Terns (or average number of chicks fledged per nest) was 1.39 from 126 breeding pairs and this has only been beaten once before in the history of the colony when in 2017, 111 breeding pairs fledged.

RSPB experts say it is too early to say if this is a sign of recovery from Highly Pathogenic Avian Influenza. For long lived species such as terns, the recovery process could take many years and avian flu has not gone away - but the figures this year bring new hope for Coquet Island's seabirds.

There was some good news for Arctic Terns on the island too. They fledged their highest number of chicks ever per pair at 1.49.

Common Terns fledged an above average number of chicks per breeding pair at 1.47, but the number of breeding pairs at 353 (compared with 1,875 Common Terns pre bird flu in early 2022) was the lowest ever recorded.

Conservationists say that 276 adult Roseate Terns seen on Coquet Island this year hatched during or before 2022, when

the disease first took hold on the island. This also brings hope that some of these birds survived the virus, but it's also possible some of these birds did not catch it. This data is collected by dedicated staff and volunteers who spend many hours using a telescope to read leg rings which are marked with a unique code to identify each bird individually.

"The oldest Roseate Tern, aged 13, returning to Coquet Island this year will have travelled the equivalent of three times around the world."

Roseate Terns are a threatened Red Listed species in the UK, meaning they are at the highest-level of conservation concern. Expert conservationists and volunteers at the RSPB work year-round to provide the right conditions for these birds to thrive, protecting them from disturbance, as well as monitoring them through ringing to enable tracking of their movements and calculation of survival rates.

Stephen Westerberg, RSPB Northumberland Coast Site Manager, said: "Here in Northumberland, we have the only colony of this elegant seabird in the UK. Knowing that the Roseate Terns have had such a successful breeding season

after two years of bird flu gives us great hope for the future.

"There are still a lot of unknowns though, and we could see outbreaks of Avian Influenza in subsequent breeding seasons on Coquet Island. We hope though that next year will bring another successful breeding season for our Roseates but surveillance and preparedness for outbreaks is key".

Number of AI deaths still unknown

It is not known exactly how many Roseate Terns died from Avian Influenza and some may have died away from the colony but the 2023 RSPB seabird surveys revealed a 21% decline in the Coquet Island breeding population since before the bird flu outbreak. This year drones have been used for the first time to count the nesting birds, using trained and licenced drone pilots and in addition over 3,000 bird rings have been read by staff and volunteers to find out where Coquet Island's seabirds are coming from and how long they live.

Avian Influenza remains a threat to seabirds and between September and October this year, 20 Great Black-backed Gulls were found dead on Coquet Island, with samples testing positive for a different sub-type of bird flu to that seen in 2022 and 2023.

If enough of our vulnerable seabirds already exposed to Avian Influenza have developed immunity, flock immunity might protect against large-scale outbreaks. Immunity though, wanes over time and the virus can change.

Stephen added: "We urgently need action from the UK governments to tackle the many threats our seabirds face so they can recover in numbers and reach healthy population sizes better able to withstand threats such as disease."

In total 28 species of birds nested on the island in 2024, including seven species of duck. The oldest Roseate Tern, aged 13, returning to Coquet Island this year will have travelled at least 84,000 miles on its migration, the equivalent of traveling three times around the world.

The secret of a long and happy life? 4G!

In issue 149, I wrote about Amble's War Memorial. For this issue I had the privilege of interviewing a man who was born while they were still building said memorial.

George Young celebrated his 100th birthday just before Christmas, receiving his card from King Charles and Queen Camilla. His family presented him with a photo book of memories entitled '100 years of George, young by name and young by nature.'

George was born in Marine Road and spent much of his youth outside on the adjacent grassed area, where he could play football, cricket, tennis, and golf.

Brother Eddie took him along to a Duke's School sports day and he was in awe of the sports fields there. So, when he finally made it to the school himself, he was a member of the school cricket team and became captain of the football team.

In his youth, he saw an R101 airship sailing over Amble. On a visit to Acklington Aerodrome he recalls seeing a spitfire and marvelling at its speed. He watched a German bomber fly over Amble, strafing Windsor Terrace and Hauxley Colliery.

On another occasion he attended an incident in Alnmouth, where a German bomber had caused a number of casualties.

In 1943, at the age of 18, he was called up to the RAF. He was trained in RADAR, which at the time was top secret. During his training he was billeted in the Royal Albert Hall Mansions, which he said sounded very grand, but they had been stripped to the bare bones and had no heating. Here he experienced the London Smog. After a time in Cheshire, servicing radar units, he was posted to Bombay and finished the war in Ceylon.

After being demobbed he joined the Civil Service and worked in the Ministries of Work, Food and National Insurance.

In 1947, a colleague, invited George along to Amble Cricket Club and here he met Lorna whom he married in 1952. They had 68 happy years together. (Lorna ran a ladies clothes and drapery shop, bearing her name, now the site of Raggy Dolls.) George and Lorna have one daughter, Valerie, and two grandchildren, Lucy and Olivia.

In 1961, George took the



opportunity to train as a teacher at Alnwick College, housed in Alnwick Castle. His first post was at Broomhill. He then moved to Red Row, then Amble Dovecote Street and finally Edwin Street schools. He served 26 years under three headmasters Messrs. Bowman, Hellawell and Morton. He helped educate more than one generation of Amble children, my own included.

George has witnessed enormous changes in Amble; at the harbour, from the heyday of the mining and fishing industries to the current emphasis on tourism. He joined St. Cuthbert's Church choir in 1933

and remembers a harvest festival service when the congregation was so big, seats had to be put in the aisle to accommodate everyone. That day the choir had to process in single file as there was no room for the customary procession.

And the 4G? Grandchildren, Golf, Gardening, and Greenhouse. As for any other 4G, he will leave that to a younger generation.

George was made an honorary member of both Warkworth and Foxton golf clubs on his birthday. He still enjoys a game of golf when the circumstances allow.

Vivienne Dalgliesh

Make a Vera doll

Award winning local craft store, Amble Pin Cushion, is reporting Unprecedented orders for their Vera Stanhope knitted doll pattern, since the final episodes of the popular crime series aired on TV.

Owner Norma Arthur commented, "the whole country has gone nuts for Vera."

We've sent out more patterns in the past week than in the whole of 2024. Hits on our website are up over 1000%!"

Keen crafters can call into the shop on Amble's Queen Street or order online at <https://amblepincushion.co.uk/shop/vera-stanhope-knitting-pattern>.



D

Joseph A Donkin
Financial Management

Savings & Investment Planning

Retirement Planning, Pensions & Tax Advice

Life, Illness & Family Insurance Advice

Business Protection & Corporation Tax Planning

Estates, Trusts & Legacy Planning

Get in touch if you would like to know more:

Email: joseph.donkin@sjpp.co.uk

Phone: 07469396964

Associate Partner

St James's Place

*Joseph A. Donkin Financial Management is an Appointed Representative of and represents only St. James's Place Financial Management plc (which is authorised and regulated by the Financial Conduct Authority) for the purpose of advising solely on the group's wealth management products and services, more details of which are set out on the group's website <http://www.sjpp.co.uk/products>. The 'St. James's Place Partnership' and the titles 'Partner' and 'Partner Practice' are marketing terms used to describe St. James's Place representatives.

BULLYING

What is bullying?



Bullying is constantly picking on someone like all day being horrible, making them feel insecure. These are some examples, picking up on appearance, name calling, race, sexual orientation, sex, age and more. There could also be physical abuse such as hitting or slapping. At the end of the day bullies want their victims to feel different and not like everyone else.



If you see someone being bullied, what should you do?

If we see someone getting bullied, most people would stay quiet because if we did, we are scared of what the bully will say next. Indie says "I personally think you should stick up for people as you want the other person to feel better and comfortable. It's important for people who are being bullied are getting supported."

When does banter become bullying?

Banter is when you are teasing someone, possibly making jokes about them where you know you're intending to hurt them, making them feel upset to feel better about yourself. It is not banter when you are picking on someone relentlessly. In our hearts, most of us know when banter becomes bullying but not all of us know when this line has

been crossed.

Banter would be a true laugh with your friends when everyone feels equal. But if one person isn't laughing you should check on them to see if they're ok. When people make fun of someone's appearance that they cannot change, that is not okay.

If you are going to make a joke about someone's appearance, try to avoid mentioning something that they can't change in thirty seconds.

If you need any help talk to a trusted adult or talk to someone on Childline who keeps your identify anonymous. We say "Please remember that you're awesome and don't let anyone bring you down."

Phone number for ChildLine - 0800 1111

By Indie and Eden with help from Nina and Issy



WHY FAST FASHION IS NOT WORTH IT

or Why I hate Shein and you should too

Imagine that you are looking for new clothes online and find out about a website where you can purchase almost anything for a fraction of the price that you would have to pay for a similar item somewhere else – it looks too good to be true! However... the reason for that is because it IS too good to be true.

There is no way that you can buy clothes that are made by people who are paid fairly and where the quality of the clothing is good for the very cheap prices which apps like Shein are known for. The same goes for literally anything else that you can buy from apps like Shein, AliExpress and Temu.

When talking about fast fashion, there are a lot of problems which can be covered, including:

- Negative effects on the environment
- Labour costs - the workers are not getting fair wages

Fast fashion is proven to be very bad for the environment. Textile waste, which is basically any kind of textile that is no longer able to be used/worn or is just not needed in general, is the consequence of the fashion industry which is to blame for up to 10% of global carbon emissions. The industry

creates around 92 million tonnes out of the 100 billion tonnes of clothing produced in a year ends up in landfill. On a similar note, independent designers have claimed to see their own designs stolen by Shein to be sold on their website with their cheaper prices. Additionally, toxic levels of lead have been found in products from Shein.

When it comes to costs such as materials, the thing which they need to spend the most money on is on their own employees – this includes their wage, any benefits and so on. Shein's unbelievably low prices are due to the people working in the sweatshops not getting paid a fair wage.

According to Public Eye, the basic wage after taking away overtime pay was 2,400 Yuan, or £265. If that sounds like a lot, the living wage in China according to Asia Floor Wage Alliance is 6,512 Yuan, around £719. Does that still sound like enough? Along with this, Shein has had cases of child labour and alleged cases of forced/slave labour.

I occasionally hear people defending their use of Shein and similar apps because they don't have the money to afford clothes from anywhere else. However, I'm sure that

the people working in the sweatshops - which likely have atrocious working conditions - have even less money than the people trying to justify buying clothes from their website.

Unless you are in DESPERATE need of new clothes, don't buy from there. Or, even better, buy clothes second hand on apps like Vinted where you can find better quality for the same price or even cheaper.

Unfortunately companies like Shein may influence other companies to follow in their footsteps and chase a bigger profit by underpaying their workers, using lower quality materials and so on.

Hopefully this trend of cheaply made fast fashion will end. Until then, try not to waste money on any app like Shein. Even if it is only 10p.

By Grace

Don't leave our school in a mess



Just because something is old, is that an excuse for it being left in a messy state?

Our school building at JCSJ is due to be replaced with a brand new - hopefully clean and tidy - school. However the building now is not very good. It's worn down and broken.

The mess comes in different forms. Sometimes the toilets are smelly, toilet seats are broken and there's graffiti on the walls.

There's loads of gum under the tables. Some of the students run around, hit doors and smash things. That's not acceptable. The teachers try their hardest to stop it, but it is not working.

There are also holes in the ceiling and pieces coming off so you can see wires; the school looks run down.

So I am asking if we can all try to be a bit more respectful when it comes to looking after our school. I am looking forward to the new school. Hopefully there will be a big change. But I worry that older children will disrespect it and it will end up like the old school.

By Issy



Important days in February



National Pizza Day

Do you have a favourite pizza?

Some pizza bases are deep dish, some are thin and crispy, stuffed crust and soft, we don't mind

but we prefer not to share! Our favourite pizza toppings are, bbq chicken pizza, chicken sweetcorn, meat feast, pepperoni and margarita. It is national pizza day on 9th February.



Valentine's Day

Why do we celebrate Valentines day?

We celebrate Valentine's Day on 14th February. It's associated with romantic love from the 14th century. Many people think this is pointless because

it can remind people how lonely they are. Eden says "It's bad because people spend lots of money for something to show love."



Random Acts of Kindness Day

On 17th February it is a day to give out kindness. A random act of kindness is a small, unexpected gesture that is done with out the expectation of anything. Some examples of random act of kindnesses are:

- Giving a compliment
- Holding the door for someone
- Smiling
- Picking up litter
- Donating to charity
- Offer to babysit
- Give flowers

By Eden, Nina and Indie



Football in Amble 1886 - 2025

Football arrived in Northumberland in the 1870s, and the Northumberland Football Association was formed in 1883.

The first match in Amble was in 1886 and the first Amble team was called Amble Coquet Lights who played Cup matches and friendlies against other Northumberland teams e.g. Broomhill Rovers, Alnwick Hotspur Rangers and Morpeth Harriers.

A number of other men's teams came and went during this period

- Amble Reserve Team 1889 - 1935
- Amble Blue Stars (1) 1898 - 1899
- Amble Blue Stars (2) 1900 - 1903
- Amble St Cuthberts (1) 1901 - 1904
- Amble Black Watch 1902 - 1903
- Amble Coquet Lights (2) 1908 - 1911
- Amble West End 1911 - 1914
- Amble United Wednesday 1920 - 1921
- Amble Welfare (1) 1947 - 1954
- Amble CYMS 1950 - 1951
- Amble Welfare (2) 1955 - 1956

Over the last 55 years (since 1970) there has been a succession of Amble clubs that have started off playing mainly in the North Northumberland League and progressing to the Northern Alliance, but in some ways, they have all hit the same problem.

There is only a certain level that any Amble team can attain (Northern Alliance Premier Division) because they do not have an enclosed ground that can be developed. These were:

- Amble Vikings (1) 1972 - 1980
- Amble Town 1988 - 2001
- Amble Vikings (2) 1992 - 2001
- Amble United 2001 - 2013
- Amble (Swarland) 2003 - 2011
- Amble (St Cuthbert) 2011 - 2024
- Amble Masons 2018 - 2020

Women's teams

I have found no evidence of any Women / Ladies teams from Amble in all my research, other than the current Amble AFC Ladies that was set up in September 2023 and play 7 a-side games in the Durham FA Women's Recreational League Division 2 at the Farrington Community Academy in Sunderland on a Sunday morning.

They changed their name to Amble FC in January 1889 and continued to play friendlies until joining the East Northumberland League 1895 - 1900. They had greater success when they joined the Wansbeck Junior League 1900 - 1902.

They then played in the Northumberland League (1902 - 1905), East Northumberland (1905 - 1010) and Wansbeck League

(1910 - 1914), winning Division 2 of the Northumberland League in 1903, and the Wansbeck League in 1914.

After WW1 they restarted in 1919 in the North Northumberland League as Amble United, joining the Ashington & District League 1921 - 1925, the Blyth & District League 1925 - 1929, reverting to Amble FC in 1927, Coquetdale League 1929 - 1931, North

Northumberland 1931 - 1933, Ashington & District 1933 - 34, North East Alliance 1934 - 35, finally joining the Northern Alliance League in 1935.

Their heyday was between 1955 and 1961 when they won the Northern Alliance five times in seven years. They finally folded on 5 Sept 1970 with the club strips and equipment being sold off to pay debts.



Newspaper cutting featuring members of Amble FC. The caption reads: "...Playing under the name 'Parry Bar' the team won the Charities Cup each year from 1956-66. Over the same period Amble had a successful team in the Northern Alliance League. Attendances at the Welfare Park were often over a thousand and on one occasion [a] Christmas Day fixture, around two thousand - a gate of more than £40 with entrance at a 'tanner' [6d].

Sunday teams

There have been several Sunday football teams from Amble played in the Morpeth Sunday League until the League folded in 2016.

The nearest Sunday League now is the Cramlington and District Sunday league (20 miles away) after the Blyth and Wansbeck Sunday League folded in June 2024.

Amble Sunday teams included:

- Bede Street Club •Boys Club
- Dock Hotel •Fourways
- Jus-rol •Masons Arms
- Park Rangers •Pier 81
- Schooner •Tavern •Vikings

There will probably never be another Amble Sunday football team.

Junior teams

There were a number of Junior teams (Under 18) in Amble when there was an Amble and District Junior League (approx. 1902 - 1911) but finding details of this league is proving difficult.

Teams found are

- Amble Athletic
- Amble Harbour Villa
- Amble Red Star

There were also Junior teams around in the late 1880s and 1890s called

- Amble Juniors
- Amble Rovers Juniors

Today we have Amble AFC Juniors who have 11 teams from U14's down to U7's, who play in the Northumberland Football League.

Football grounds

Amble football teams have played on seven grounds around Amble. Some are known but others need further investigation.

- The Links •The Braid
- Mr G Patterson Field - Mr Patterson was the owner of the Blue Bell Inn in the late 1880's and had a field adjoining his house near the inn
- Powder Fund Field
- Race Course Field - The Racecourse was around two fields on Link House Farm with a hedge in between
- Welfare Field - Amble United FC moved there in 1921
- Running Track pitch - back of the Welfare Field

Did you know...

On 2 May 1961, the ex-England football captain George Hardwick played at the Welfare Field in a benefit match for two Amble players Handyside and Stewart, who both played for Amble for ten years. The match was watched by a crowd of over 700.

A question...

Will the new 3G pitch, to be developed at the James Calvert Spence College, have spectator access on all four sides of the pitch, because if it does it will allow an Amble team to progress up the football ladder. If it does not, I think it will be the end of men's football in Amble after 138 years.

Tony Martin

Ringed Plovers are on the move

It's a cold winter day in February. The ground is frozen, wind is howling and it's snowing. But dotted along the coast there are several pairs of ringed plovers scouting out potential nesting sites. They might not look like they are doing much, probably hunkered down to escape the worst of the winter weather, but they are watching. Is this spot free from predators? How much is this site disturbed by people? Is this going to be a safe area to raise chicks?

In previous years, Amble Links and the surrounding beaches have been a particular hotspot for nesting activity. Over the coming months, Space for Shorebirds rangers and Northumberland

Coast Conservation Team volunteers will be keeping a close eye out for birds returning to these sites and protecting their nests whenever we can.

Ringed Plovers are



migratory, with most birds travelling south for the winter, but there is a population which stays in Northumberland all year round. We have been colour-ringing chicks at nest sites to try to assess where they go once they have fledged, and the data we have gathered so far has been quite surprising. Some birds did indeed head south and were spotted in France and Portsmouth. But one bird headed west to County Donegal and in a move nobody was expecting, one bird flew north to

Fife! The picture becomes even more complex as at least three of our colour ringed birds have opted to stay in the county being regularly spotted throughout the winter!

Wherever they have spent the winter, we hope to see them all back in Northumberland in spring ready to start the nesting season again! Follow us: Space for Shorebirds on Facebook and Instagram.

Lily Tibbitts' *Student Life*

One of my classes this term is about documentary making - something completely new to me as I'm useless with a camera (as my sister will tell you from many failed attempts to take nice photos of her and my family). I thought it would be fun, so I decided to give it a go, but then I had to decide what to make my five minute documentary about. It had to be something interesting and personal, so I picked the Ambler. After all, how many towns can say they have a community newspaper that's been running for 25 years?

I started off with fun interviews with the wonderful Anna (thank you for sitting there for two hours) and then I started to build up my other shots: the lights parade, the community spirit event, the harbour, the pods.

If you spotted someone wandering around with a huge camera and a confused expression, that was probably me.

As I started layering all these shots together with Anna's story of how the Ambler came to be, a narrative started to appear. A



story of our community, built by the town and the newspaper together.

The Ambler is something that's easy to take for granted. It appears on our doorsteps every couple of months without us having to do anything at all, but it's such an important part of our community.

It's crucial for keeping everyone informed about what events are going on and providing space for everyone in Amble to make their voices heard.

The Ambler is an incredible thing to have in our town, and I hope that my documentary can reflect even a tiny bit of that.

Lily Tibbitts

Expertise Wills and Wealth

PROTECT YOUR FAMILY ASSETS

Long Term Care • Third Party Challenges • Divorce
Business Failure • Sideways Disinheritance

LASTING POWER OF ATTORNEY in areas of
Property and Affairs • Health and Welfare

Make sure you have them in place while you're fit and healthy

WILLS Simple Wills • Trust Wills • Free Reviews

PROBATE Call us for Expert Help and Advice

PENSIONS Do you have pension pots scattered
here and there? Now coming up to retirement?
We're here to help you go through your options.

Ring Enid: 07772 182 130
for a **FREE CONSULTATION** in your home



Email: enid.eww@sky.com
Enid Wilson
Consultant
30 years of experience

CBSWorld

Complete Business Supplies



Printing Services

Leaflets • Booklets • Books • Newsletters • Posters
Carbonless sets and books • Fine art prints • Invites
PVC Banners • Foamex boards • Signage

www.cbsworld.co.uk

Unit 5 Elm Square, Lionheart Enterprise Park
Alnwick, Northumberland NE66 2ES
Tel: 01665 660022 Email: sales@cbsworld.co.uk



Reports from our County Councillors



REFLECTING UPON 2024.

I express my gratitude to all residents within my ward, it has been a joy to represent and support you throughout the year and stand firmly for what is right at County Hall, I will continue to beat the drum for our spectacular part of Northumberland representing the community within Amble, Hauxley and North Broomhill and all the beautiful surrounding areas.

This has been an enormously fulfilling experience, thank you everyone for the amazing support that you continue to provide.

2025 can be a year of positivity and progress, we can achieve this only with your support.

Please continue to contact me directly via phone, email or social media. I will continue to the best of my ability dealing with the individual casework raised, always helping and listening to local residents.

We have a great sense of community. I care strongly about our local area and the services provided, that you and I use, so it's important we get the best for us all.

I am honoured to be selected as the Labour candidate for the new Amble and Hauxley ward in the upcoming May election. It is a privilege representing my home town Amble and Hauxley village. I will strive to represent all within this new ward, I hope to earn your support and am looking forward to working with all community groups, councillors and residents in 2025.

Cllr Terry Clark Amble Hauxley and North Broomhill.

Terry.Clark@northumberland.gov.uk 07779 983768



In response to requests I state below the latest regarding the Coble Quay footpath closure at the harbour which has been closed for such a long time. I have to say I am disappointed by how long it has taken to get to this point.

"The Council will update stakeholders and the general public of the outcome of negotiations as and when the process has been concluded and an



"The County Council remains in negotiation with Amble Marina regarding proposals which would enable the repairs to be undertaken to the Coble Quay walkway and the reopening of the circular path to the public, while also facilitating the reopening of the unsurfaced parking area for public use. Work is currently being undertaken by NCC to prepare a new revised proposal for consideration by Amble Marina.

Jeffrey.Watson@northumberland.gov.uk 07802 385367

agreement reached"

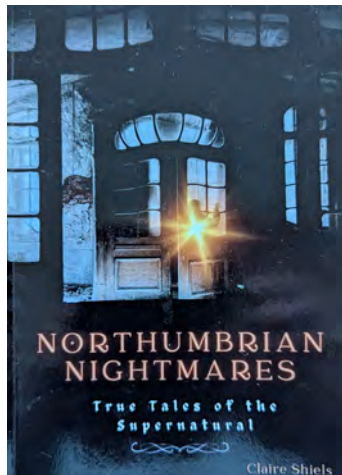
I am aware of encroaching vegetation along Rotary Way and am trying to get this cut back, the particular issue is with gorse bushes making it difficult for walkers and cyclists.

I am still engaged in discussions re a safe crossing point on the A1068 in the Wynd area.

Jeff Watson

Book Review:

Northumbrian Nightmares by Claire Shiels



Also, I do not understand why the locations are not always identified; in one case the author makes the point that she has creatively hidden the location. I have enjoyed reading Ghost stories for years. I once had other locally collected tales which I always found quite educational, giving history and location when I have moved into a new area. In some way I felt that this local specificity was missing from this collection, though this could be the author adding her own sense of mystery (if you know, you know). We can, however, be sure of one spectre locally at Red Row, but you will have to get the book to read the full story.

In some cases, the stories are short but I suppose that is only to be expected when collecting from personal experience. I found that all the accounts were believable but often mysterious rather than scary.

This book will appeal to many who like to ponder the mysteries of this beautiful part of the country as well as those who enjoy late night spooky tales. I am encouraged that Claire appeals for more stories so hopefully we can look forward to a second volume.
Ian MacKarill

This is an enjoyable book, and I am sure it is possible that these stories are in all of us. They are about the supernatural, of times when we are not sure what lurks in the darkness or what was that movement in the corner of my eye?

The book clearly sets out that these are stories which are collected from the people of Northumberland and are not necessarily all located in Northumberland. I was a bit disappointed by this as I hoped to read of ghostly goings on in places that I know.

Kielder Observatory recently brought the inspiration of the night sky to James Calvert Spence College for an evening of stargazing.

Pupils and their families/parents/carers were invited to attend this free event of content delivered by science communicators from the observatory which included, inflatable planetarium with immersive shows and outdoor telescopes for night sky observing.

Visitors were amazed by the shows in the planetarium dome and many got to see the planet

Saturn up close through the impressive outdoor telescope kit the team had brought with them.

The JCSC science department with the assistance of sixth form students delivered engaging science experiments for families to enjoy; served refreshments and space themed snacks; assisted the Kielder staff with their workshops; and organised a raffle for staff and visitors to raise money for the in-school astronomy club. Science teacher Ms Pringle thanked everyone as £173 was raised on the day. School is hoping to put on a similar event next autumn.



Adam and Dan from Kielder Observatory with the inflatable planetarium



Hello everyone, welcome back to Trust Life – let us chase away those winter blues with some positive and inspirational thoughts.

Looking forward to 2025, we should, hopefully, have a start date for the Playzone in the coming weeks – first piece of positive thinking!

While the proposed schedule for the 3G pitch has a start date of 2026 and the funding is out of our remit, we remain convinced this too will happen.

Preparations for the Puffin Festival will begin soon so if you would like to get involved in community events please contact one of the events committee members so we can invite you to the meetings. Or if meetings aren't your thing I'm sure we can find a way to utilise your talents - we all have something we can offer.

On Neighborhood Planning – while the steering group enjoyed a well earned break over Christmas, they managed to get through a fair amount of work

beforehand and feel they are making good progress. Being aspirational they are hoping to work through and have this complete this year. That's a lot of work for a small but dedicated group!

“There will be markets in Amble on the town square on Tuesdays from May – October

For future updates, log on to the website (<https://www.ambleplan.org>) which will be populated with news as well as posts on social media, and in The Ambler.

It is good to note that we have two new businesses opening up on Queen Street. We offer a warm welcome and every success with their new ventures. Plus we have just had

confirmation from the lady who organises Alnwick market that she will be holding markets in Amble on the town square on Tuesdays from May – October .

And finally, latest research shows that if we ate humans at the rate we eat animals we would be extinct within 2 weeks – so moral of the data is to eat hooman beans! Sorry just one of those pieces of info I thought should be shared, hopefully it raised a smile!!

Our job search facilities are now open from 9am – 5pm each week day.

If you would like to contact the Ambler or require a CV you can do so by ringing: 01665 712929 or emailing editor@theambler.co.uk or Julie@ambledevelopmenttrust.org.uk

Wishing a happy new year to everyone.

Julia, all Trust staff and Trustees

Julia, all Trust staff and Trustees
julia@ambledevelopmenttrust.org.uk

Bittern return to Druridge Bay

Northumberland Wildlife Trust is delighted that rare bitterns have once again been spotted overwintering at several of its reserves at Druridge Bay.



Photo: Dave Ruscombe

Bittern were only occasional visitors to the Druridge Bay area prior to 2006, but thanks to improved reedbed management on the wildlife charity's East Chevington, Hauxley, Cresswell, and Druridge Pools reserves, sightings are becoming more regular during the winter months.

As part of the four-year Heritage Lottery funded Catch My Drift project, new structures were put in place on the East Chevington site to control water levels to improve the existing 16ha of reedbed, creating a mixture of reedbeds, ditches, and pools which has increased the number of bitterns taking up residence in the reedbeds.

Hello Amble,

Our caring and professional teams are here to help, guide and advise you through the best ways to say goodbye.

Find us at Queen Street, Amble, NE65 0DA, or call us on 01665 710437.

coop.co.uk/funeralcare







Providing NHS services

 Blood Pressure Checks	 Vaccinations	 Allergy Treatments	 Hair Loss Treatments
 Erectile Dysfunction Treatments	 Period Delay	 Travel Vaccinations	 Weight Management
 Migraine Treatments	 Contraception	 Smoking Cessation	 Podiatrist

and treatments not routinely offered by the NHS
To discuss any of our services in private, speak to a pharmacist

Visit our website for more information:
www.cromiepharmacy.co.uk
info@cromiepharmacy.co.uk | 01665 710 896
158 Percy St, Amble, Morpeth, NE65 0AG





Amble Town

COUNCIL

Town: 9th Jan, 13th Feb, 13th March, 10th April, 15th May at 6pm.
Council Office

Amenities: 30th Jan, 27th March, 29th May at 6pm. Council Office

EAST WARD:	Helen Lewis, 5 Meadowburn, Amble NE65 0PH 07751 229 739 helen.lewis@ amble.gov.uk	Craig Weir (Chair/Mayor) 76 Priory Park, Amble NE65 0HY 01665 712342 craig.weir@ amble.gov.uk	WEST WARD:	David Bewley 11 Brinkburn Place Amble NE65 0BJ 07525713086 david.bewley@ amble.gov.uk	Ivor Rackham 7 George Street Amble NE65 0DW 01665 798435 Ivor.Rackham@ amble.gov.uk	CEN. WARD:	Michael Joyce c/o Fourways2, 6 Dilston Terrace, Amble NE65 0DT 07803059933	Kate Morrison, 3 Island View, Amble NE65 0SE 01665 711191 kate.morrison@ amble.gov.uk	Vacancy
-------------------	-----------------------------------------------------------------------------------------------------	-----------------------------------------------------------------------------------------------------------------	-------------------	---------------------------------------------------------------------------------------------------------	-------------------------------------------------------------------------------------------------------	-------------------	----------------------------------------------------------------------------------------	---------------------------------------------------------------------------------------------------------	---------

Councillor Vacancies: Your Town Council Needs You!
If you are passionate about Amble, have lots of ideas to share or would just like to get involved in shaping the Town then please consider joining the Town Council. There are currently two Councillor vacancies available and we would love to hear from you.

Toilet Refurbishment Programme
Councillors have met with officers of the County Council to discuss a better provision than originally intended for both sets of toilets in Amble. This will come at an extra cost to which Amble Town Council are expected to contribute. It is hoped that with this enhanced design and provision that the toilets will be more suited to the ever-growing needs of a larger community and a busy tourist destination.

Community Asset Transfer Decision
The Council is sad to say that after intensive investigation and discussion they will not be entering into a Community Asset Transfer of Edwin Street school building from Northumberland County Council. Cost analysis has shown that the costs of renovation and sustainable running costs are too great for a small Council to realise.
Members are disappointed, but feel that our residents deserve something fit for purpose that will last for many years. Council has endeavoured to get information about the various venues in the town which could host groups of people wishing to follow an interest/hobby etc.
Surprisingly there appear to be quite a few more vacancies than was initially thought. Check out our website for the current list of venue availability.

Bus shelters
We hope to hear soon if our application for remedial work to some of our older shelters has been successful. We plan to renew the roof at Church Street, repaint some walls, redo the floor and perhaps change the seating. The small shelter on Acklington Road will have the frontage extended for better access. Council will also be considering whether to place benches in some of the other shelters.

100 Years – Unveiling of Amble War Memorial
On 10th May 2025, we are hosting a commemorative event to mark the 100-year anniversary of the unveiling of the Amble War Memorial and Clock Tower. We are keen to trace any direct descendants of E.M Lawson (Landowner), W Burton (Architect), R Carse (Contractor) and Whittle & Son (Sculptor). If this is you or your family, please get in touch!

Percy Drive
Following the incident on the footpath between Priory Park and Hauxley Grange, our renewed pleas for action here resulted in N.C.C. and Persimmons looking at the area with a view to attending to the various faults. We send our best wishes to the casualty for a speedy recovery. It's such a shame that after months of pleas, someone had to be hurt before action happens.

Trees
Following the storms last year and the recent tendency for stronger wind speeds, concerns have been highlighted nationally about tree conditions. There have been lots of incidents of trees falling onto houses or into roads causing lots of damage and even some cases where people were injured. Council are responsible for the trees at the West Cemetery and those in the Memorial Gardens. These are inspected by a qualified tree specialist at approx. 18 month intervals so as to see their condition in the different seasons. Any recommended actions are undertaken as soon as possible by a tree surgeon so that the safety of all is maintained as far as possible.

Councillors Corner
As you can read above, there are Town Councillor vacancies. As a new member, it has been fascinating seeing what goes on behind the scenes and hearing about all the amazing work that different organisations do here. Some things are high profile. Meanwhile, others happen quietly in the background. A lot of the work is carried out by volunteers and all voluntary organisations need more people to take an active part. It's what makes our brilliant community tick.
Of course, some of our work as Town Councillors is listening to you and helping you with your issues. However, often those issues we hear about are the responsibility of external bodies, especially Northumberland County Council, and we always do our best to get these addressed by applying pressure.
On behalf of the Town Council, I wish you a Happy New Year.
Cllr Ivor Rackham

Warkworth Memorial Hall

Concerts at Warkworth Memorial Hall continue to thrive and on 15 February we welcome the Wild Cloudberryes. Well known locally, this contemporary folk ensemble is fronted by award winning singer songwriters Madelaine Leddy and Philip Stuckey. The band blend elements of storytelling folk, blues and ballads to create an easy listening mix of original and much-loved songs. Expect stories about their Northumberland heritage and history as well as delving into matters of life and love.

28 March sees a welcome return of Neil Gore who previously enthralled us with the "The Ragged Trousered Philanthropists". This time "Behold Ye Ramblers" dramatises the beginnings of the struggle for the right to roam and enjoy the benefits of outdoor activities. A celebration through Music Hall, poetry and

song of the birth of The Clarion newspaper and movement that grew in its name. The mass trespass on Kinder Scout is well known, but is merely the climax to a series of mass trespasses dating back some 20 years. The Clarion movement from the 1890s encouraged and celebrated healthy community activity while collectively building Clarion Houses as rural community centres to enable people to escape the daily grind of work and cramped city living.

For above events: Tickets should be pre-booked, for payment on the door. Doors and bar open at 19:00 for a 19:30 start. For further details and to book tickets contact Peter Burnham, preferably by email to peter.burnham@gmail.com. Alternatively telephone him on 01665 711388.

Concert details are available on our web site at www.wwmh.uk.



Amble Photographic Group member Tony Wright found himself on the other side of the camera at the group's last meeting of 2024.

First, he won the monthly competition and the Rose Bowl and then at the Christmas meal at the Amble Inn he was presented with The Photographer of the Year shield.

Photo above: Tony with the Chair of Amble Photographic Group Penny Horseman and Tony's winning image from the Rose Bowl Competition.

New members always welcome.

Look on our website for more picture and details of programme for 2025.

Rotary update



December was a busy month for Rotary Amble and Warkworth (RAW) members.

RAW supported the Christmas Tree festival in St. Lawrence's Church, Warkworth - our Rotary tree was decorated with the logos of some of the many charities and needy causes we try to support.

A new development for RAW at Christmas this year, was our involvement in the local Rotary Christmas Voucher Scheme project, a joint project with Alnwick Rotary Club. Together the two clubs raised £2,000 and distributed some two hundred gift cards across the local area. In the Amble and Warkworth area Rotarians collaborated closely with several

local primary schools and issued a total of 100 gift vouchers to help families with the purchase of Christmas presents.

The Christmas collections proved to be remarkably successful thanks to the generosity of local residents and visitors. The Rotary Santa sleigh toured Amble, Warkworth, Togston, Hadston and Acklington. It also attended the Amble Light Parade. Rotarians assisted with the stewarding at the Christmas Eve Warkworth 'carols on the bridge' event. These events raised approximately £4,000, money which will all be used to fund local good causes over the next year.

Our sincere thanks go to

Morrisons Amble for allowing us to collect outside the store entrance and to everyone who donated so generously to our collections.

Special thanks to the Thursday Quiz organisers, participants, and staff at the Hermitage Inn in Warkworth who generously donated some of their charity fund raising efforts to supporting Amble and Warkworth Rotary clubs Voucher Scheme.

On a sadder note, recent months have seen the passing of two well-known former Rotarians, Tommy Hogg and Bill Wake. Both were well known for the contributions they made to the local community. Bill Wake had been a particularly dedicated member of Rotary Amble and Warkworth, having been an active member for over fifty years which included holding a key role of Secretary of the club.

2025 promises to be busy but interesting, starting with a gathering in Shortridge Hall. This event included the induction of some of our new corporate members.

We had a fascinating talk by local businesswoman, Karen Park on the challenges of running a specialist award winning local food company, Seabanks, which specialises in producing cold pressed rapeseed oil and raspberry and blackcurrant vinegars. These products have been met with acclaim and have featured on the James Martin cookery show.

Looking ahead, the RAW Charity Golf Day will be held at Alnmouth Golf Club (Foxton Hall) on 25 Sept Teams of four (Gents, Ladies, or mixed teams) £155 entry per team includes tea/coffee and a bacon roll. For further information contact Phil Derry philderry@hotmail.com

To find out more about what Amble and Warkworth Rotary Club has to offer, contact us via www.ambleandwarkworthrotary.org or the club Facebook page, Rotary Amble & Warkworth.

We are also looking to increase and promote corporate membership so if you have a business and are looking at ways to increase your community impact, please feel free to contact us to discuss further.

Gillian's new exhibition at the Bailiffgate

Bailiffgate Museum and Gallery is pleased to exhibit 'The Lost and Left Behind' from 4 Feb - 30 March. (closed Mondays) Entry is included in the museum admission.

Come and enjoy the thought-provoking exhibition by Scotland-born artist Gillian Lee Smith who explores the lost and found, connection and heritage and the past and how it has shaped us, including memories that are accumulated, embellished, diminished, and sometimes lost and even rediscovered over time.

Whilst the work represents and honours our collective heritage, our ancestors, and those who have come before us, we are also invited to view

ourselves with the same curiosity and reverence as those we hold dear. What if we were to create/recreate (and even imagine!) stories that are familiar and celebrate our uniqueness - to connect with ourselves, our memories, and our human experience?

Previously working as a reminiscence worker with older people, there is a fascination with our own personal stories where the seemingly ordinary is made extraordinary. Originally completing a degree in Performance Costume from Edinburgh College of Art, Gillian graduated in 2005 and has rooted her practice in drawing and painting, exhibiting locally and nationally.



William by Gillian Lee Smith

Living in Northumberland for the past decade, Gillian has found a great deal of inspiration in the people, industry, and landscape of our local area.

Prints and cards will be available to purchase in the Bailiffgate shop.

Jean Humphrys, Chair at Bailiffgate says "Gillian's evocative work, stirs memories in all of us that bring to life parts of our own stories that connect with her theme."

We believe that there are many ways to 'tell' a story, whether it be through art, words, music or any other medium. We welcome work from talented local artists, musicians and creatives who 'tell' stories in very different ways. Gillian's carefully crafted work does this very well."

Pricing: £6 Adults, £5 for Concessions, £1 for ages five - 16s and under fives free.

Christmas Soirée



Students of Amble piano teacher, Isabel Morrison, participated in their annual "Christmas Soirée" at Coquet House, Amble Harbour in December.

An eclectic programme of Classical, Jazz, Popular, Folk and, of course, Christmas music, was enjoyed by all. Performers were aged nine -70+, proving that piano playing can be enjoyed by everyone! The students are now looking forward to their "Summer Soirée" in July.

Workshops at Amble Pin Cushion

Thursday 6 February	10.30am – 12 mid-day £10 Knitting for Absolute Beginners
Thursday 6 February	1.30pm – 3.00pm £10 Knitting for Absolute Beginners
Saturday 15 February	10.30am – 3.30pm £60 Creative Embroidery with Shells
Thursday 20 February	1.30pm – 3.30pm £5 Craft and Chatter (Drop in crafting group)
Saturday 22 February	10.15am – 3.45pm £45 Make Do and Mend
Wednesday 26 February	1.30pm – 3.30pm £28 Crochet for Beginners/Improvers – Scarf or Cowl
Thursday 6 March	1.30pm – 3.30pm £28 Knitting for Improvers – Scarf or Cowl
Saturday 15 March	10.30am – 3.30pm £45 Introduction to Brioche Knitting
Thursday 20 March	1.30pm – 3.30pm £5 Craft and Chatter (Drop in crafting group)
Saturday 22nd March	10.15am – 3.45pm £55 Make a Fascinator / Headpiece

To book your place, please pay your deposit either in the shop or via the website <https://amblepincushion.co.uk/product-category/workshops/>



Alnwick & District Choral Society

A date for your diaries
Spring Concert
Saturday 5th April 7.00pm
at St Paul's Church, Alnwick

The performance will include:

Haydn: "Nelson Mass"
Mozart: "Litaniae Lauretanae"
Haydn: "Insanae et vanae curae"
Details and ticket prices on the website: alnwickchoralsociety.co.uk/

Warkworth Film Club

Sat 1 Feb: romantic drama, Past Lives. Two childhood friends are separated after one's family emigrates from South Korea to the US. Twenty years later, they are reunited in New York for one week as they confront notions of destiny, love and the choices that make a life. The two lead actors give really moving, subtle yet powerful performances. (2023 Cert 12A, 1 hour 45')

Sat 1 Mar: The Critic. Set in 1930's London, this is a thrilling tale of ambition, blackmail, and desire with a dazzling anti-hero at its heart. When the most feared and vicious theatre critic in town Jimmy Erskine (Ian McKellen), finds himself suddenly in the cross hairs of the Daily Chronicle's new owner David Brooke (Mark Strong), he strikes a Faustian pact with struggling actress Nina Land (Gemma Arterton) who is desperate to win his favour. (2024 Cert 15, 1 hour 34')

No need to book - just turn up. Doors and cash bar from 7pm. Film starts at 7.30pm. £5pp. At: Warkworth War Memorial Hall, 40 Castle Street, NE65 0UN

For more information, or to be added to our email list, call Anna on 07758 253104 or anna.willey@cantab.net

Amble artist in prestigious exhibition



Amble artist Luke McTaggart has been accepted into the prestigious Royal Scottish Society of Painters in Watercolour exhibition for the second year running. His piece, which depicts a view of local spot, Black Bridge in Warkworth, will be exhibited inside the Royal Scottish Academy on Princes Street until Tuesday 6 February.

On being accepted Luke said, "I'm really pleased to have been included in the show for the second year running, it's always a bit of a lottery with these big open calls and you're reliant on the selection committee recognizing your work. It's great to have been included again, especially with a

bigger piece".

Luke added, "I love the landscape around Warkworth and Morwick and spend a lot of time walking and cycling around it. The painting shows the view from Black Bridge, looking upstream towards the weir. The low summer sun cuts across the fields late in the evening and lights up the woodland that runs along the back of Watershaugh Road. It's pretty spectacular but only lasts for around 10 or 15 minutes at most, just as the sun dips beneath the horizon. I'm very interested in these sorts of fleeting moods and light effects".

See <https://www.rsw.org.uk/rsw-exhibitions/2025-exhibition/>

Amble Lifeboat Fundraisers

We would like to thank everyone who supported us in 2024, the RNLi 200th Anniversary year - individuals, businesses, clubs both from the local community and further afield for their fantastic support during the year. Lifeboat Day was a huge success and our regular monthly coffee mornings continue to help raise much needed funds.

2024 was a special year and it ended with the retirements of the Station Mechanic John Sim, and Trevor Nisbet from the crew after many years of service. We all wish them a long and happy retirement. Congratulations to Jeff Foster who is the new Station Mechanic.

We are very grateful for all your support so that we can continue to help Save Lives at Sea and look forward to seeing you in 2025. Wishing you all a Happy and safe New Year from Amble Volunteer Crew, Volunteer Fundraisers and Shop Volunteers.

2025 Coffee Mornings upstairs in the Lifeboat Station 10am to 1pm.

Sunday 16 February

Sunday 16 March

Sunday 20 April Easter coffee morning (provisional date)

Follow us on FaceBook:

Amble Lifeboat Fundraisers

and RNLi-Amble Lifeboat

Station

Photo: John Sim (right) presenting new station mechanic Jeff Foster with a photo of the Shannon Lifeboat





Make it look pretty again!

Design - Build - Maintenance

- landscaping
- paving
- fencing
- weeding
- grass cutting, edging
- hedge trimming, pruning
- planting, sourcing

STAINTON

Coast & Country Garden Service

01665 798543 **AMBLE** staintonel@gmail.com 

Lionheart Cleaning

Commercial & Domestic Cleaning Services

Your One Stop Cleaning Service Provider

Our ever expanding teams of fully trained and insured operatives are insured and able to carry out all of the following aspects of Domestic and Commercial cleaning for you, or your business.

Carpets and upholstery	Conservatory	Pressure washing
Windows	Roofs	End of Tenancy
Gutters/Fascias	Commercial	Post Build
	Kitchens	General

01665 713448 www.lionheartcleaning.co.uk



SeaWaves

JEWELLERY

Olive's Legacy - Memorial Jewellery

Creating a lasting memory of your loved ones' ashes into a forever piece of Jewellery

Pod 3 Amble Harbour Village
Amble NE65 0FD

07912509560

*Spring opening hours:
Wed - Sun 10.30am - 3.30pm
(weather permitting)*

seawavesjewellery.com



Queen Street Co-op in sudden closure announcement

Residents were shocked and disappointed to hear that the Co-op food store on Queen Street is closing on 22 February.

A spokesperson for Co-op, said: "We carry-out reviews of our existing store locations, and sometimes, and only after very careful consideration, do we take the difficult decision to close a store. Our store in Queen Street, Amble, will close next month, our priority now is to fully support colleagues, who have been informed, and we would like to thank the community for its support of this store."

Ten people currently work at the store.

The spokesperson added, "The site is leasehold. So, it will be readied to hand back to the landlord. Co-op will not have an involvement over the future use of the site."

They also confirmed that Co-op Funeralcare Amble will remain open.

Julia Aston, director of Amble Development Trust said "It's extremely disappointing news for the town. This decision seems to have come about

rather quickly. Given that the Co-op is for its members, I don't think any of its local members were consulted over this closure.

"We will be trying to make contact with the property owner to see what plans if any they may have for the future of the building."

Anna Williams



The Co-op's long history in Amble

The Co-op has held a presence in Amble for 144 years, leaving a huge legacy in the town. Untold numbers of people have worked, benefitted and shopped under the banner of the members-owned society. The Co-op's much vaunted

ethos claimed to support people from the cradle to the grave.

The Amble Co-operative Society was founded in 1880. The area it initially covered included Warkworth, Radcliffe, Shilbottle and even Alnwick.

Since then, there have been numerous outlets throughout the town.

This included grocery and butchers shops, a pharmacy, a dairy, garage, shoe shop, DIY, bakery and cafe, ladies and menswear, furniture and non-food, a bank, insurance

agency, offices, and a funeral parlour. The Co-op even had their own gardens on Gloster Hill. There were premises on Albert St, Queen St and Newburgh St.

However, the Co-op has undergone several corporate reorganisations in recent decades, meaning close historical ties to the original society and the town have gradually reduced. The Amble Co-operative Society was replaced by the North Eastern Co-op in the early 1970s. The current food store is owned by The Co-operative Group.

Julia Aston of Amble Development Trust remembered her time working in the office at the Co-op: "My first job was to answer the switchboard which consisted of pegs, 'eyeballs', switches and a winding handle. I loved that switchboard! Then I had to sort the cheque slips out to be added up for the dividend."

Did you work for the Co-op in Amble? We'd love to hear your memories of those days.



Staff at Amble Co-op Chemist in 1974. l-r: Lynn Cleghorn, Ada King, Shirley Milne, Doris Highgate and Pharmacist William Adamson. Photo: Shirley Dawson.



The Co-op department store closed in 2006. The building now houses shops, a restaurant, and flats above.



The Co-op store gardens pictured in 1938. They were situated on Gloster Hill where Mariners View is now. They eventually closed in the 1960s. Photo from Fiona Hamilton.